



# ViewShade

DIMENSIONALLY STABLE

FORM THAT HOLDS. QUALITY THAT LASTS.

## DS95 & DS99

OUTDOOR BLIND & AWNING COLLECTION



Mildew & salt  
water resistant

Glare, heat &  
UV reduction

Weather protection  
from wind & rain

Stretch & shrink  
control, privacy  
with a view



# ViewShade

## DIMENSIONALLY STABLE

Whether you're outfitting a home or a commercial space, the most important part of any blind system is the fabric. It's the key barrier between your interior and the outside world—providing protection from harsh sunlight, wind, rain, insects, dust, and unwanted views.

Spicers ViewShade fabrics are designed to last. With dimensional stability, they maintain their shape and appearance over time, ensuring a smooth and reliable finish day after day.

Engineered with purpose-designed weaves and tailored openness levels, ViewShade strikes the ideal balance between natural light, airflow, privacy, and protection—perfect for both residential comfort and commercial performance.

**FORM THAT HOLDS. QUALITY THAT LASTS.**







# ViewShade

DIMENSIONALLY STABLE





FORM THAT HOLDS. QUALITY THAT LASTS.





# ViewShade

**DIMENSIONALLY STABLE**

## VIEWSHADE DS CONSTRUCTION BENEFITS

### COMPOSITION

Fiberglass is a fiber primarily derived from sand, with its raw materials processed at high temperatures. Polyester, conversely, is a synthetic fiber produced from coal, air, water, and petroleum.

Our manufacturing processes prioritise environmental protection and product safety. The resultant product is free from substances deemed harmful to human health.

Extensive testing has been conducted by SGS to monitor 211 substances of high concern (SVHC) as designated by the European Chemical Administration (ECHA). Furthermore, the product has undergone multiple tests, including for Volatile Organic Compounds (VOC) and perfluorinated and polyfluoroalkyl substances (PFAS), under the US Environmental Protection Agency Toxic Substances Control Act (TSCA),

With all tests successfully passed.

Our product has also demonstrated superior performance when tested against AS 1530.2 & AS 1530.3 standards compared to other PVC-mesh products.

### COATING

The PVC coating applied to both polyester and fiberglass core yarns exhibits comparable characteristics.

### THERMAL PROPERTIES

Fiberglass possesses a significantly higher elastic modulus than polyester fibers and other polymers.

This property indicates that substantial force is required to induce elastic deformation in fiberglass, whereas polyester will deform more readily.

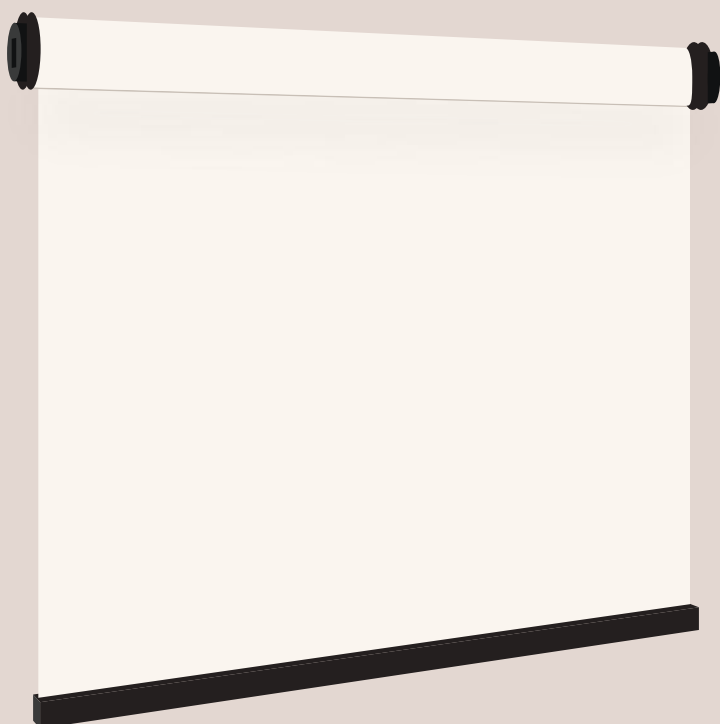
A key distinction between fiberglass and polyester cores lies in their respective melting temperatures.

Fiberglass demonstrates a considerably higher melting point than polyester, thereby offering superior resistance to deformation at elevated temperatures. Polyester, conversely, will begin to deform when exposed to lower heat levels.

In practical application, fiberglass core fabric maintains its structural integrity without changing shape. In contrast, polyester core fabric may elongate and develop an hourglass shape or exhibit "bagging" within restraint systems. Additionally, fiberglass core fabric is resistant to stretching, unlike polyester core fabric, which can deform over time due to gravitational forces.

# FORM THAT HOLDS. QUALITY THAT LASTS.

Discover the difference with Spicers ViewShade - a premier blind fabric engineered for superior performance and durability. Designed to outperform, ViewShade offers superior dimensional stability, advanced UV protection and lasting visual appeal, setting a new standard for blind fabrics.



## OUR ADVANTAGE



Stretch & Shrink Control



Element Protection



Excellent Flatness



UV & Glare Control





ViewShade  
DIMENSIONALLY STABLE

DS95





Silhouette



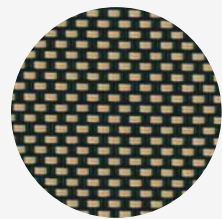
Thunder



Flint



Titanium



Chocolate



Mocha



Serenity

## FORM THAT HOLDS. QUALITY THAT LASTS.

ViewShade is dimensionally stable, maintaining its shape and structure over time for a consistently smooth, reliable finish.







View from the inside.





# ViewShade

DIMENSIONALLY STABLE

## DS 95

With it's special technology and characteristics of Fiberglass, it produces Superior Dimensional Stability while retaining it's shape and size even when subjected to temperature fluctuations and moisture exposure.

### PVC COATED FIBERGLASS BASE FIBERS

- Dimensionally stable, ideal choice for large span application

### 2X2 WEAVE CONSTRUCTION

- Reduces glare in direct sunlight while maintaining your view
- Exceptional wind, rain & sun protection
- Expand outdoor living space

### 5% OPENNESS FACTOR

- Eliminate up to 95% of solar heat
- Provides Privacy without compromising view

### FR PROPERTIES

- Exceptional FR results AS1530.2 & AS1530.3

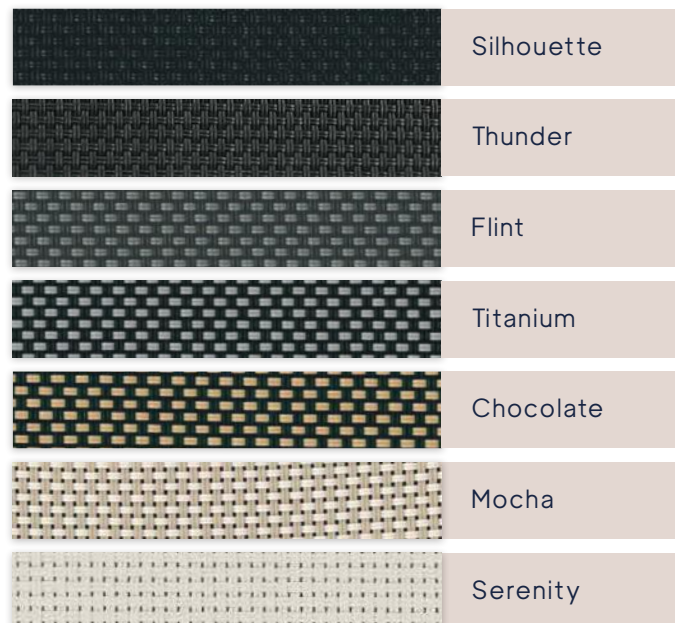
### ENVIRONMENTALLY AWARE WITHOUT COMPROMISING THE VIEW

- Fragrance free and Non-Toxic

### WARRANTY

- Supported by 10 year warranty\*

\*Information contained in this warranty statement is accurate and based on the latest product information available at the time of publishing. AUG 2025



### SPECIFICATIONS

**Weight.**  
560 GSM

**Openness.**  
5% Approx

**Construction.**  
PVC Coated Fiberglass  
Yarn 2x2

**Warranty.**  
10 Year\*

**Certification.**  
AS 1530 part 2 & 3



Stretch & Shrink  
Control



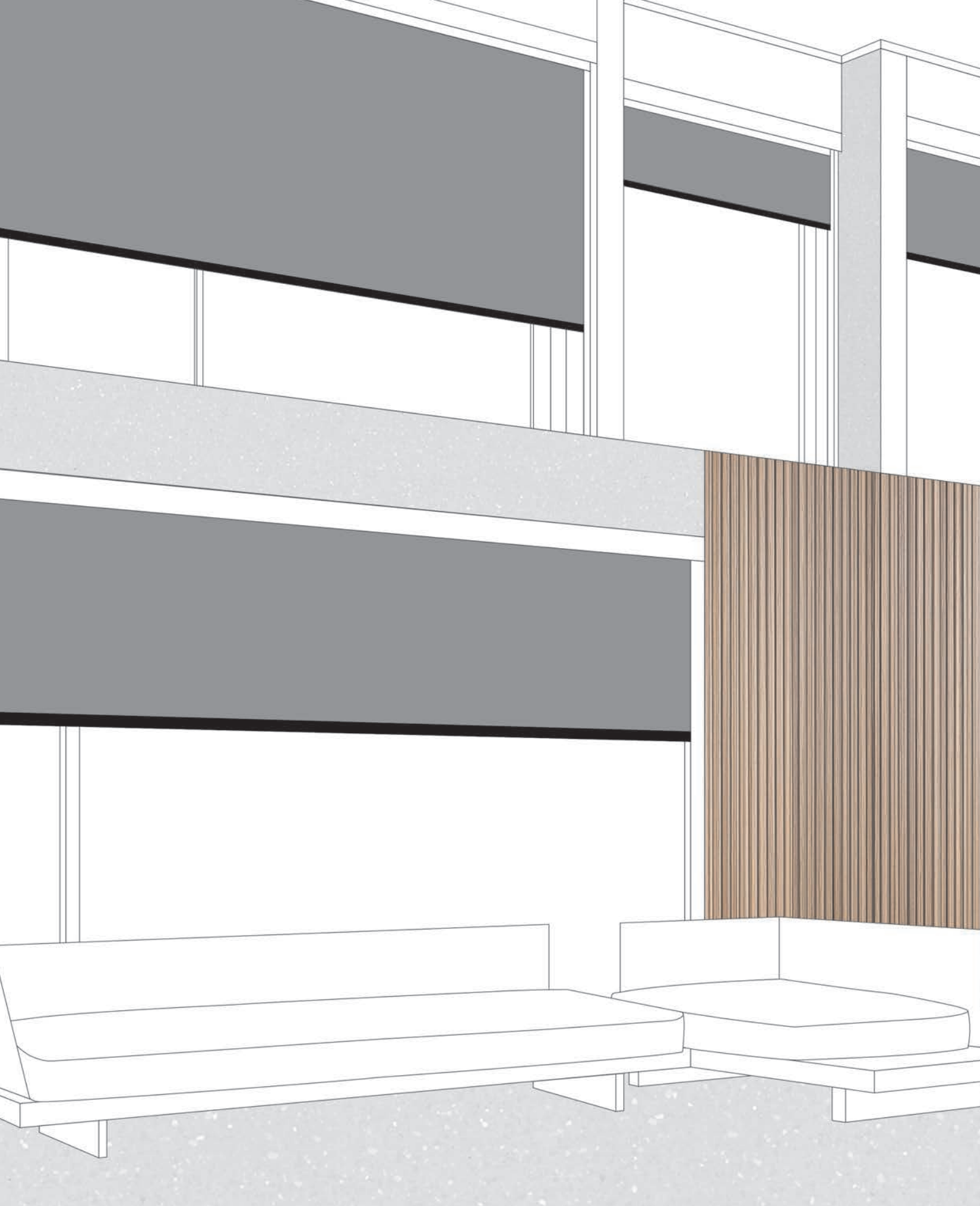
Element Protection



Excellent Flatness



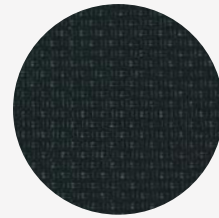
UV & Glare  
Control



ViewShade  
DIMENSIONALLY STABLE

DS99

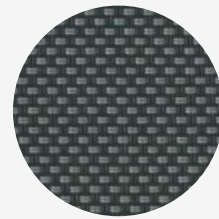




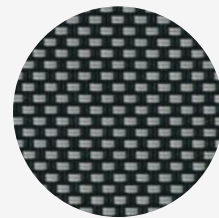
Silhouette



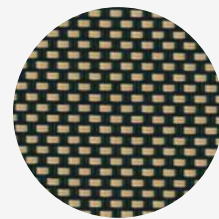
Thunder



Flint



Titanium



Chocolate



Mocha



Serenity

## FORM THAT HOLDS. QUALITY THAT LASTS.

ViewShade is dimensionally stable, maintaining its shape and structure over time for a consistently smooth, reliable finish.









# ViewShade

DIMENSIONALLY STABLE

## DS 99

ViewShade Dimensionally Stable 99 2x2 weave with versatility and performance. Its tight weave construction demonstrates privacy & superior wind & rain protection.

### PVC COATED FIBERGLASS BASE FIBERS

- Dimensionally stable, ideal choice for large span application

### 2X2 WEAVE CONSTRUCTION

- Tight weave construction
- Reduces glare in direct sunlight
- Superior wind, rain & sun protection
- Expand outdoor living space

### 1% OPENNESS FACTOR

- Eliminate up to 99% of solar heat

### FR PROPERTIES








- Exceptional FR results AS1530.2 & AS1530.3

### ENVIRONMENTALLY AWARE WITHOUT COMPROMISING THE VIEW

- Fragrance free and Non-Toxic

### WARRANTY

- Supported by 10 year warranty\*

	Silhouette
	Thunder
	Flint
	Titanium
	Chocolate
	Mocha
	Serenity

### SPECIFICATIONS

**Weight.**  
620 GSM

**Openness.**  
1% Approx

**Construction.**  
PVC Coated Fiberglass  
Yarn 2x2

**Warranty.**  
10 Year\*

**Certification.**  
AS 1530 part 2 & 3



Stretch & Shrink  
Control



Element Protection



Excellent Flatness



UV & Glare  
Control

\*Information contained in this warranty statement is accurate and based on the latest product information available at the time of publishing. AUG 2025



View from the outside.



# ViewShade

**DIMENSIONALLY STABLE**

## **CLEANING & MAINTENANCE GUIDLINES**

To ensure maximum life expectancy and optimal performance, adherence to a regular cleaning and maintenance regimen in highly recommended.

### **CLEANING & MAINTENANCE PRECAUTIONS**

- Maintain cleanliness on both sides of the ViewShade fabric by using a soft-bristle brush or sponge with a mild, diluted soap solution. Following a thorough cleaning, rinse all residue completely with clear, cold water.
- The use of alkaline or solvent-based cleaners is not recommended; abrasive scrubbing or rubbing should be avoided.
- High-pressure hoses must not be used.
- Prompt removal of any foreign substance contact, such as bird droppings, vegetable matter, or BBQ emissions, is crucial.
- Keep petrochemicals, solvents, and similar fluids, along with fertilisers, insecticides, and garden sprays, away from the fabric.
- Ensure the fabric is thoroughly dry before retraction.
- It is advised to clean ViewShade every six months or whenever there is a visible accumulation of dust, dirt, or grime.

Spicers ViewShade is enhanced with anti-bacterial and anti-fungal treatments, which provide protective benefits, improving the fabric's appearance and extending its performance lifespan.

### **PREVENTING MOULD AND MILDEW GROWTH & REMOVING STUBBORN STAINS**

- Prepare a weak concentrate by combining 1 part chlorine bleach with 20 parts lukewarm water.
- Apply the solution to affected areas using a soft-bristle brush, sponge, or soft cloth. After application and prior to the solution drying, thoroughly rinse all residue by hosing with clear, cold water.
- Allow the fabric to air dry completely in an open position before retracting the blind.





# ViewShade

DIMENSIONALLY STABLE

## WARRANTY

ViewShade, a premium quality PVC-coated mesh, is specifically designed to withstand Australia's harsh and diverse weather conditions and is backed by a 10-year warranty.

### WARRANTY COVERAGE

Warranty Covers:

- Absence of major manufacturing faults.
- Resistance to becoming non-functional due to ultraviolet exposure.
- Adherence to published manufacturing and presentation specifications.

### CLAIM PROCEDURE

To initiate a warranty claim:

All claims must be accompanied by proof of purchase, specifically the original installer's invoice, detailing the date, colour, and product information.

Spicers personnel or an authorized representative must be granted access to inspect the suspect fabric to determine the claim's validity.

The purchaser is required to notify Spicers within 30 days of identifying the defect in the mesh.

### COVERAGE PERIOD & SCALE

The ViewShade warranty operates on a regressive scale.

- For claims made from the time of installation through to the end of year 5, the fabric will be replaced at 100% for successful claims.
- From years 6 through 10, fabric replacement is subject to a partial claim, determined by the reasonable service the fabric has already provided.

**Years 1-5** :100% fabric-only replacement

**Year 6** :50% fabric-only replacement

**Year 7** :40% fabric-only replacement

**Year 8** :30% fabric-only replacement

**Year 9** :20% fabric-only replacement

**Year 10** :10% fabric-only replacement

### LIMITATIONS OF LIABILITY

This warranty does not cover defect resulting from:

- Misuse or abuse.
- Unauthorised modification or alteration.
- Use of the fabric for purposes other than its designed intent.
- Failure to maintain the product in accordance with Spicers' published Cleaning & Maintenance guide.

PROUD MEMBERS OF



Window Shading  
Association of  
Australia Member



# ViewShade

DIMENSIONALLY STABLE

Protect your space all year round—  
from UV, heat, and glare in the summer  
to wind and rain in the winter.

FORM THAT HOLDS. QUALITY THAT LASTS.



For enquiries please contact your local Spicer's representative.

1300 132 644 [spicers.com.au](http://spicers.com.au)

#### Victoria

155 Logis Boulevard  
Dandenong South  
Victoria 3175

T (03) 9768 8400  
F (03) 9768 8401

[info.vic@spicers.com.au](mailto:info.vic@spicers.com.au)

#### New South Wales

Unit 2, 100 Lockwood Road  
Erskine Park  
NSW 2759

T (02) 9735 2666  
F (02) 9735 2600

[salesnsw@spicers.com.au](mailto:salesnsw@spicers.com.au)

#### QLD Brisbane

75 Tradecoast Drive  
Eagle Farm  
QLD 4009

T (07) 3084 5200  
F (07) 3084 5297

[info.qld@spicers.com.au](mailto:info.qld@spicers.com.au)

#### QLD Townsville

28A Casey Street  
Aitkenvale  
Queensland 4818

T (07) 3084 5200  
F (07) 3084 5297

[info.qld@spicers.com.au](mailto:info.qld@spicers.com.au)

#### Western Australia

19 Milly Court  
Malaga  
Western Australia 6090

T (08) 6310 4300  
F (08) 9248 6515

[info.wa@spicers.com.au](mailto:info.wa@spicers.com.au)

#### Northern Territory

57 Winnellie Road  
Winnellie  
Northern Territory 0820

T (08) 8947 0188  
F (08) 8947 1366

[info.nt@spicers.com.au](mailto:info.nt@spicers.com.au)

#### South Australia

113 Ledger Road  
Beverley  
South Australia 5009

T (08) 8243 9393  
F (08) 8243 9397

[info.sa@spicers.com.au](mailto:info.sa@spicers.com.au)

#### Tasmania

4-8 Sunmont Street  
Derwent Park  
Tasmania 7009

T (03) 6272 5333  
F (03) 6272 8103

[info.tas@spicers.com.au](mailto:info.tas@spicers.com.au)

OUTDOOR BLIND & AWNING COLLECTION