



ViewShade

DIMENSIONALLY STABLE

FORM THAT HOLDS. QUALITY THAT LASTS.

DS95 & DS99

OUTDOOR BLIND & AWNING COLLECTION



Mildew & salt
water resistant

Glare, heat &
UV reduction

Weather protection
from wind & rain

Stretch & shrink
control, privacy
with a view

ViewShade

DIMENSIONALLY STABLE

Whether you're outfitting a home or a commercial space, the most important part of any blind system is the fabric. It's the key barrier between your interior and the outside world—providing protection from harsh sunlight, wind, rain, insects, dust, and unwanted views.

Spicers ViewShade fabrics are designed to last. With dimensional stability, they maintain their shape and appearance over time, ensuring a smooth and reliable finish day after day.

Engineered with purpose-designed weaves and tailored openness levels, ViewShade strikes the ideal balance between natural light, airflow, privacy, and protection—perfect for both residential comfort and commercial performance.

FORM THAT HOLDS. QUALITY THAT LASTS.





ViewShade

DIMENSIONALLY STABLE



FORM THAT HOLDS. QUALITY THAT LASTS.



ViewShade

DIMENSIONALLY STABLE

VIEWSHADE DS CONSTRUCTION BENEFITS

COMPOSITION

Fiberglass is a fiber primarily derived from sand, with its raw materials processed at high temperatures. Polyester, conversely, is a synthetic fiber produced from coal, air, water, and petroleum.

Our manufacturing processes prioritise environmental protection and product safety. The resultant product is free from substances deemed harmful to human health.

Extensive testing has been conducted by SGS to monitor 211 substances of high concern (SVHC) as designated by the European Chemical Administration (ECHA). Furthermore, the product has undergone multiple tests, including for Volatile Organic Compounds (VOC) and perfluorinated and polyfluoroalkyl substances (PFAS), under the US Environmental Protection Agency Toxic Substances Control Act (TSCA),

With all tests successfully passed.

Our product has also demonstrated superior performance when tested against AS 1530.2 & AS 1530.3 standards compared to other PVC-mesh products.

COATING

The PVC coating applied to both polyester and fiberglass core yarns exhibits comparable characteristics.

THERMAL PROPERTIES

Fiberglass possesses a significantly higher elastic modulus than polyester fibers and other polymers.

This property indicates that substantial force is required to induce elastic deformation in fiberglass, whereas polyester will deform more readily.

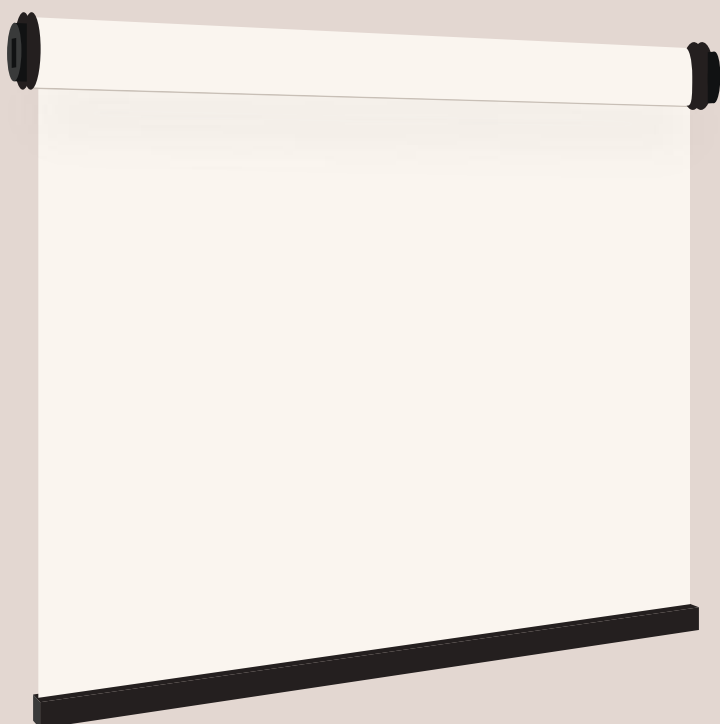
A key distinction between fiberglass and polyester cores lies in their respective melting temperatures.

Fiberglass demonstrates a considerably higher melting point than polyester, thereby offering superior resistance to deformation at elevated temperatures. Polyester, conversely, will begin to deform when exposed to lower heat levels.

In practical application, fiberglass core fabric maintains its structural integrity without changing shape. In contrast, polyester core fabric may elongate and develop an hourglass shape or exhibit "bagging" within restraint systems. Additionally, fiberglass core fabric is resistant to stretching, unlike polyester core fabric, which can deform over time due to gravitational forces.

FORM THAT HOLDS. QUALITY THAT LASTS.

Discover the difference with Spicers ViewShade - a premier blind fabric engineered for superior performance and durability. Designed to outperform, ViewShade offers superior dimensional stability, advanced UV protection and lasting visual appeal, setting a new standard for blind fabrics.



OUR ADVANTAGE



Stretch & Shrink Control



Element Protection



Excellent Flatness



UV & Glare Control





ViewShade
DIMENSIONALLY STABLE

DS95



Silhouette



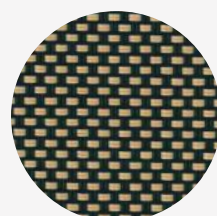
Thunder



Flint



Titanium



Chocolate



Mocha



Serenity

FORM THAT HOLDS. QUALITY THAT LASTS.

ViewShade is dimensionally stable, maintaining its shape and structure over time for a consistently smooth, reliable finish.





View from the inside.



ViewShade

DIMENSIONALLY STABLE

DS 95

With it's special technology and characteristics of Fiberglass, it produces Superior Dimensional Stability while retaining it's shape and size even when subjected to temperature fluctuations and moisture exposure.

PVC COATED FIBERGLASS BASE FIBERS

- Dimensionally stable, ideal choice for large span application

2X2 WEAVE CONSTRUCTION

- Reduces glare in direct sunlight while maintaining your view
- Exceptional wind, rain & sun protection
- Expand outdoor living space

5% OPENNESS FACTOR

- Eliminate up to 95% of solar heat
- Provides Privacy without compromising view

FR PROPERTIES

- Exceptional FR results AS1530.2 & AS1530.3








ENVIRONMENTALLY AWARE WITHOUT COMPROMISING THE VIEW

- Fragrance free and Non-Toxic

WARRANTY

- Supported by 10 year warranty*

*Information contained in this warranty statement is accurate and based on the latest product information available at the time of publishing. AUG 2025

	Silhouette
	Thunder
	Flint
	Titanium
	Chocolate
	Mocha
	Serenity

SPECIFICATIONS

Weight.
560 GSM

Openness.
5% Approx

Construction.
PVC Coated Fiberglass
Yarn 2x2

Warranty.
10 Year*

Certification.
AS 1530 part 2 & 3



Stretch & Shrink
Control



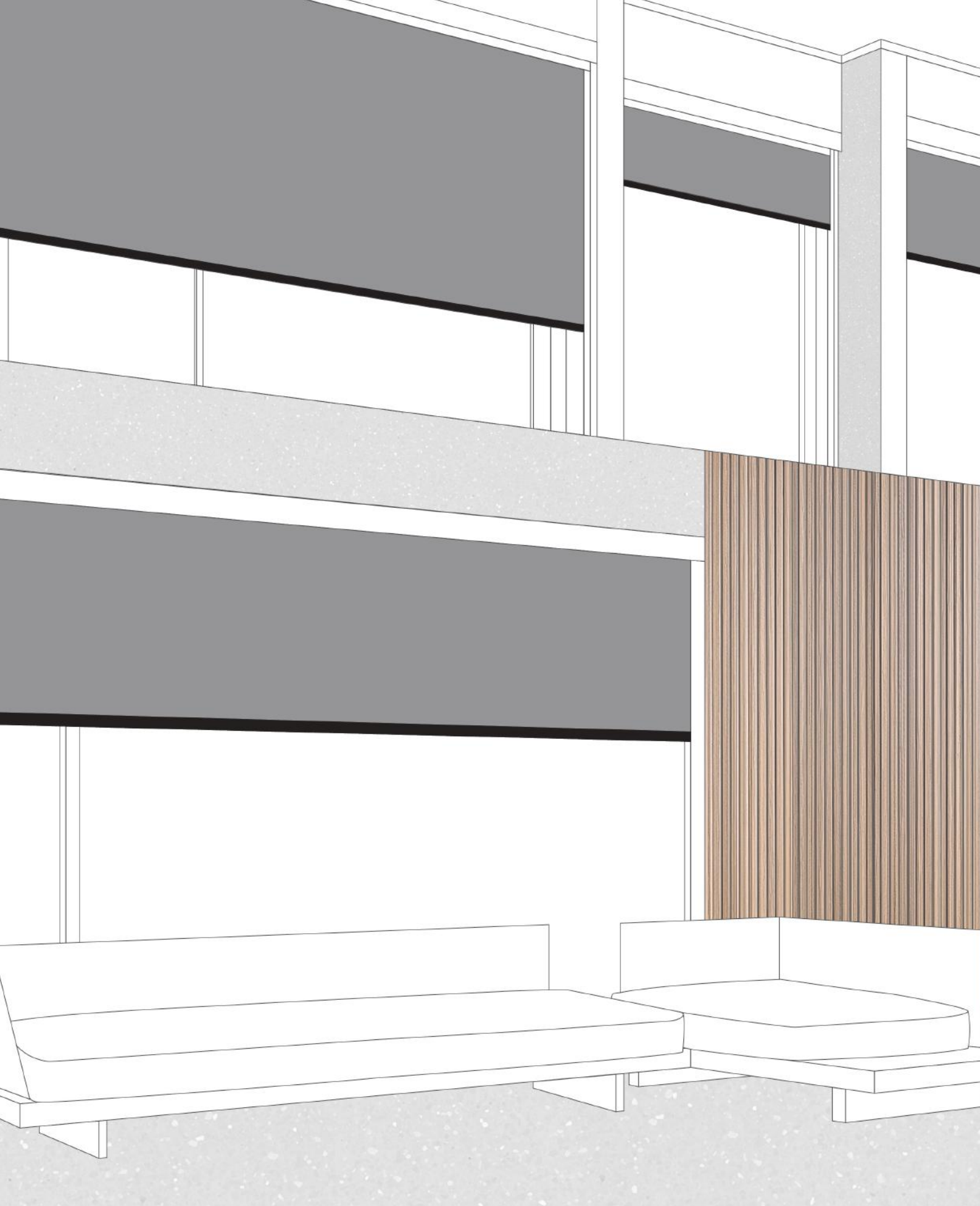
Element Protection



Excellent Flatness



UV & Glare
Control



ViewShade
DIMENSIONALLY STABLE

DS99



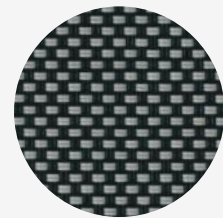
Silhouette



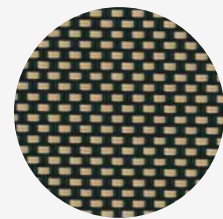
Thunder



Flint



Titanium



Chocolate



Mocha



Serenity

FORM THAT HOLDS. QUALITY THAT LASTS.

ViewShade is dimensionally stable, maintaining its shape and structure over time for a consistently smooth, reliable finish.





ViewShade

DIMENSIONALLY STABLE

DS 99

ViewShade Dimensionally Stable 99 2x2 weave with versatility and performance. Its tight weave construction demonstrates privacy & superior wind & rain protection.

PVC COATED FIBERGLASS BASE FIBERS

- Dimensionally stable, ideal choice for large span application

2X2 WEAVE CONSTRUCTION

- Tight weave construction
- Reduces glare in direct sunlight
- Superior wind, rain & sun protection
- Expand outdoor living space

1% OPENNESS FACTOR

- Eliminate up to 99% of solar heat

FR PROPERTIES








- Exceptional FR results AS1530.2 & AS1530.3

ENVIRONMENTALLY AWARE WITHOUT COMPROMISING THE VIEW

- Fragrance free and Non-Toxic

WARRANTY

- Supported by 10 year warranty*

	Silhouette
	Thunder
	Flint
	Titanium
	Chocolate
	Mocha
	Serenity

SPECIFICATIONS

Weight.
620 GSM

Openness.
1% Approx

Construction.
PVC Coated Fiberglass
Yarn 2x2

Warranty.
10 Year*

Certification.
AS 1530 part 2 & 3



Stretch & Shrink
Control



Element Protection



Excellent Flatness



UV & Glare
Control

*Information contained in this warranty statement is accurate and based on the latest product information available at the time of publishing. AUG 2025



View from the outside.

ViewShade

DIMENSIONALLY STABLE

CLEANING & MAINTENANCE GUIDLINES

To ensure maximum life expectancy and optimal performance, adherence to a regular cleaning and maintenance regimen in highly recommended.

CLEANING & MAINTENANCE PRECAUTIONS

- Maintain cleanliness on both sides of the ViewShade fabric by using a soft-bristle brush or sponge with a mild, diluted soap solution. Following a thorough cleaning, rinse all residue completely with clear, cold water.
- The use of alkaline or solvent-based cleaners is not recommended; abrasive scrubbing or rubbing should be avoided.
- High-pressure hoses must not be used.
- Prompt removal of any foreign substance contact, such as bird droppings, vegetable matter, or BBQ emissions, is crucial.
- Keep petrochemicals, solvents, and similar fluids, along with fertilisers, insecticides, and garden sprays, away from the fabric.
- Ensure the fabric is thoroughly dry before retraction.
- It is advised to clean ViewShade every six months or whenever there is a visible accumulation of dust, dirt, or grime.

Spicers ViewShade is enhanced with anti-bacterial and anti-fungal treatments, which provide protective benefits, improving the fabric's appearance and extending its performance lifespan.

PREVENTING MOULD AND MILDEW GROWTH & REMOVING STUBBORN STAINS

- Prepare a weak concentrate by combining 1 part chlorine bleach with 20 parts lukewarm water.
- Apply the solution to affected areas using a soft-bristle brush, sponge, or soft cloth. After application and prior to the solution drying, thoroughly rinse all residue by hosing with clear, cold water.
- Allow the fabric to air dry completely in an open position before retracting the blind.



ViewShade

DIMENSIONALLY STABLE

WARRANTY

ViewShade, a premium quality PVC-coated mesh, is specifically designed to withstand Australia's harsh and diverse weather conditions and is backed by a 10-year warranty.

WARRANTY COVERAGE

Warranty Covers:

- Absence of major manufacturing faults.
- Resistance to becoming non-functional due to ultraviolet exposure.
- Adherence to published manufacturing and presentation specifications.

CLAIM PROCEDURE

To initiate a warranty claim:

All claims must be accompanied by proof of purchase, specifically the original installer's invoice, detailing the date, colour, and product information.

Spicers personnel or an authorized representative must be granted access to inspect the suspect fabric to determine the claim's validity.

The purchaser is required to notify Spicers within 30 days of identifying the defect in the mesh.

COVERAGE PERIOD & SCALE

The ViewShade warranty operates on a regressive scale.

- For claims made from the time of installation through to the end of year 5, the fabric will be replaced at 100% for successful claims.
- From years 6 through 10, fabric replacement is subject to a partial claim, determined by the reasonable service the fabric has already provided.

Years 1-5 :100% fabric-only replacement

Year 6 :50% fabric-only replacement

Year 7 :40% fabric-only replacement

Year 8 :30% fabric-only replacement

Year 9 :20% fabric-only replacement

Year 10 :10% fabric-only replacement

LIMITATIONS OF LIABILITY

This warranty does not cover defect resulting from:

- Misuse or abuse.
- Unauthorised modification or alteration.
- Use of the fabric for purposes other than its designed intent.
- Failure to maintain the product in accordance with Spicers' published Cleaning & Maintenance guide.

PROUD MEMBERS OF



Window Shading
Association of
Australia Member



ViewShade

DIMENSIONALLY STABLE

Protect your space all year round—
from UV, heat, and glare in the summer
to wind and rain in the winter.

FORM THAT HOLDS. QUALITY THAT LASTS.



For enquiries please contact your local Spicers representative.

1300 132 644 spicers.com.au

Victoria

155 Logis Boulevard
Dandenong South
Victoria 3175

T (03) 9768 8400
F (03) 9768 8401

info.vic@spicers.com.au

New South Wales

Unit 2, 100 Lockwood Road
Erskine Park
NSW 2759

T (02) 9735 2666
F (02) 9735 2600

salesnsw@spicers.com.au

QLD Brisbane

75 Tradecoast Drive
Eagle Farm
QLD 4009

T (07) 3084 5200
F (07) 3084 5297

info.qld@spicers.com.au

QLD Townsville

28A Casey Street
Aitkenvale
Queensland 4818

T (07) 3084 5200
F (07) 3084 5297

info.qld@spicers.com.au

Western Australia

19 Milly Court
Malaga
Western Australia 6090

T (08) 6310 4300
F (08) 9248 6515

info.wa@spicers.com.au

Northern Territory

57 Winnellie Road
Winnellie
Northern Territory 0820

T (08) 8947 0188
F (08) 8947 1366

info.nt@spicers.com.au

South Australia

113 Ledger Road
Beverley
South Australia 5009

T (08) 8243 9393
F (08) 8243 9397

info.sa@spicers.com.au

Tasmania

4-8 Sunmont Street
Derwent Park
Tasmania 7009

T (03) 6272 5333
F (03) 6272 8103

info.tas@spicers.com.au

OUTDOOR BLIND & AWNING COLLECTION