



KIMONO

KHRÔMA

by MASUREEL

Luxurious Belgian Wallcoverings



kimono

A lush display of spring blossom; that's the vision we seek to conjure in your home. Kimono allows you to admire this fascinating, yet fleeting natural phenomenon all year round. We immersed ourselves in nature during countless walks, enabling us to capture the colour combinations that recur throughout this book. Magnificent nature not only serves as inspiration for traditional silk kimonos; but also these wonderfully rich wallpaper creations. The Kimono collection is the perfect illustration, for which nature deserves all the credit.



着物



KIM 504

Daika Olivine



KIM 804 – Yuka Dew



KIM 204 – Kimora Topiara



KIM 603 – Hoshi Gold



KIM 102 – Haru Nile

*The **Haru** design evokes
an oasis of peace.
The subtle watercolour effect
in the blossom and branches gives
the immediate sensation
of being immersed in nature.*





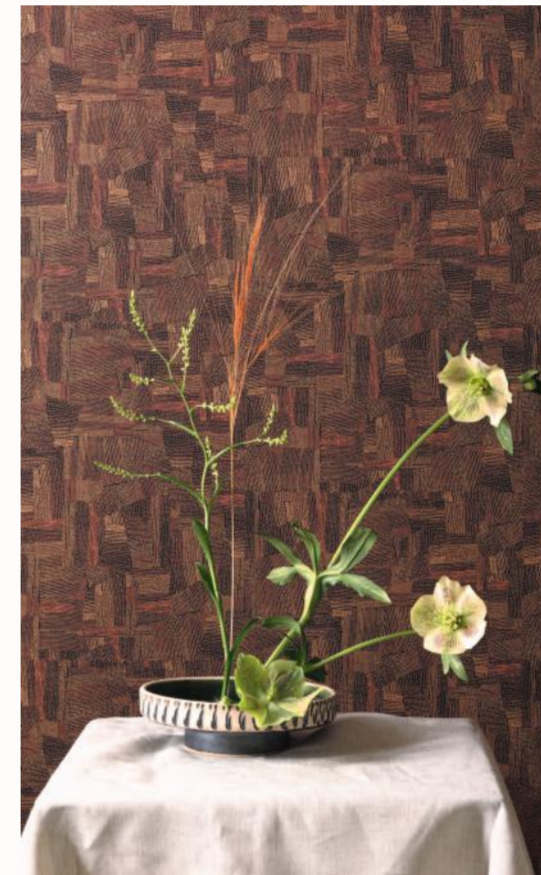
KIM **501** – Daika Spicy



DGKIM **202x** – River Dew



KIM **106** – Haru Topiara



KIM **403** – Fujita Topiara



KIM **301** – Akiyama Gold



Akiyama portrays
the Japanese landscape
in all its splendour.
Embark upon an adventure
past dizzying rocks
and lush jungles,

DRAGON



DGKIM 301 – p.38

RIVER



DGKIM 201x – p.52



DGKIM 202x – p.52



DGKIM 203x – p.52

MIWA



DGKIM 101 – p.29



DGKIM 102 – p.29



DGKIM 103 – p.29

FUJITA



KIM 402 – p.48



KIM 401 – p.42



KIM 403 – p.24



KIM 404 – p.17

AKIYAMA



KIM 303 – p.06



KIM 301 – p.53



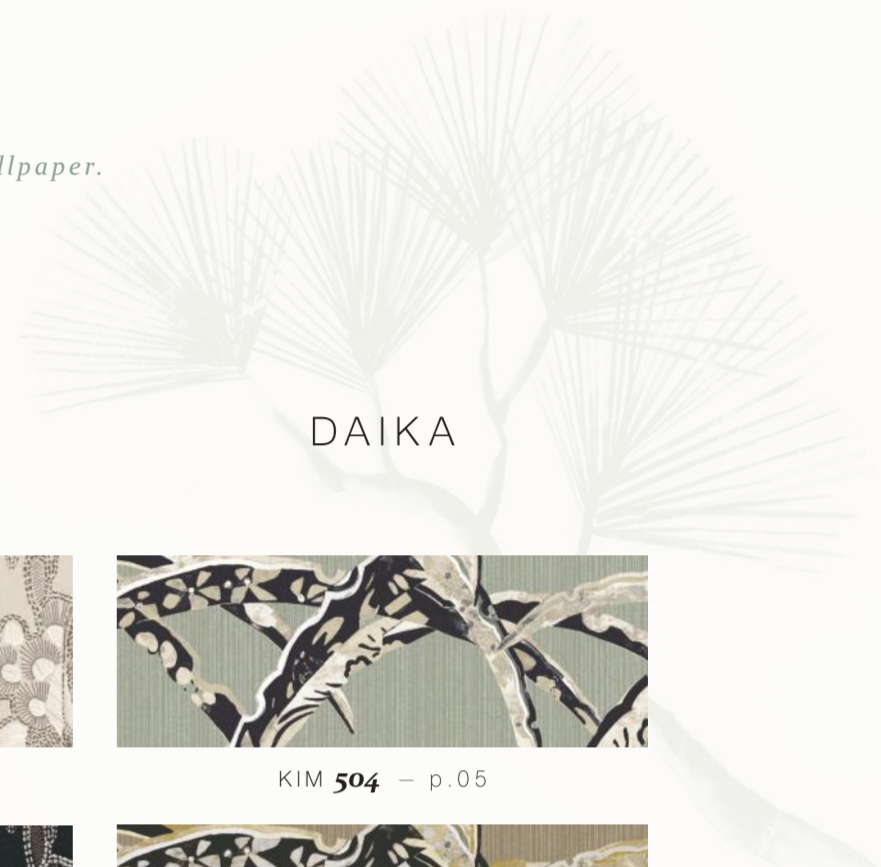
KIM 302 – p.14



KIM 304 – p.62

Fujita transports you to Japan's inhospitable landscapes. The paddy fields cultivated on mountain slopes to forge iconic rice terraces. This overhead view forms a captivating drawing that served as the starting point for our design.

*Kimora metamorphoses
the embroidered drawings of
the kimono into a sublime wallpaper.*



YUKA



KIM 803 – p.30



KIM 804 – p.01



KIM 801 – p.46



KIM 802 – p.54

HARU



KIM 104 – p.47



KIM 108 – p.02



KIM 102 – p.28



KIM 106 – p.20



KIM 105 – p.37



KIM 107 – p.66



KIM 103 – p.58

HOSHI



KIM 604 – p.09/33



KIM 605 – p.10



KIM 602 – p.25



KIM 601 – p.63

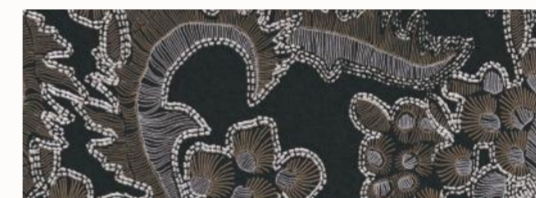


KIM 603 – p.61

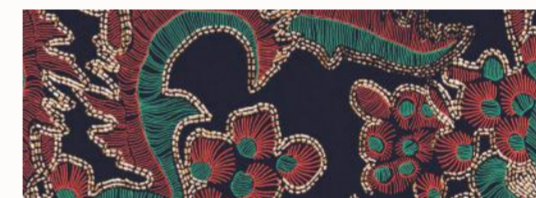
KIMORA



KIM 202 – p.51



KIM 203 – p.34



KIM 201 – p.69



KIM 204 – p.13

DAIKA



KIM 504 – p.05



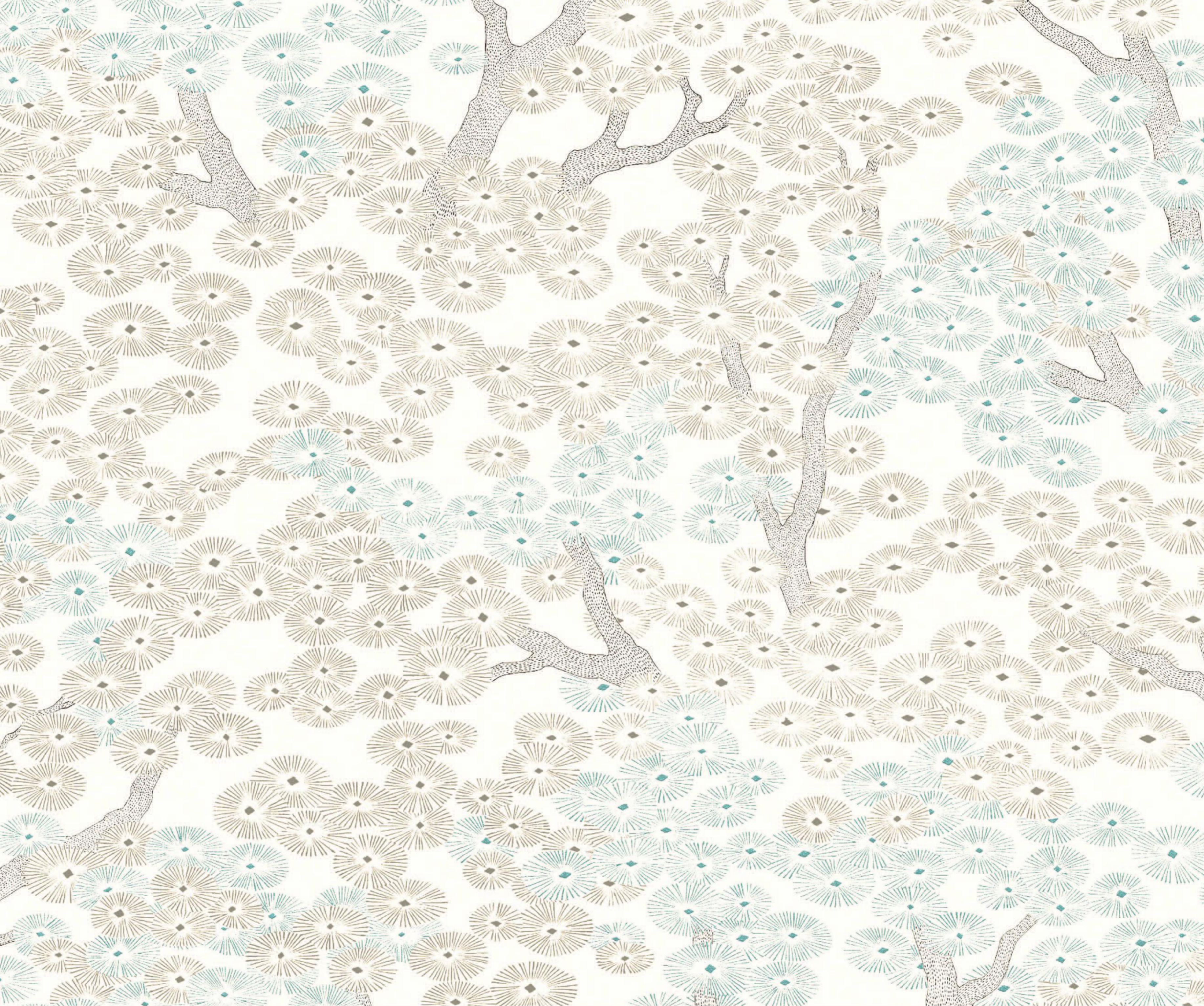
KIM 503 – p.57

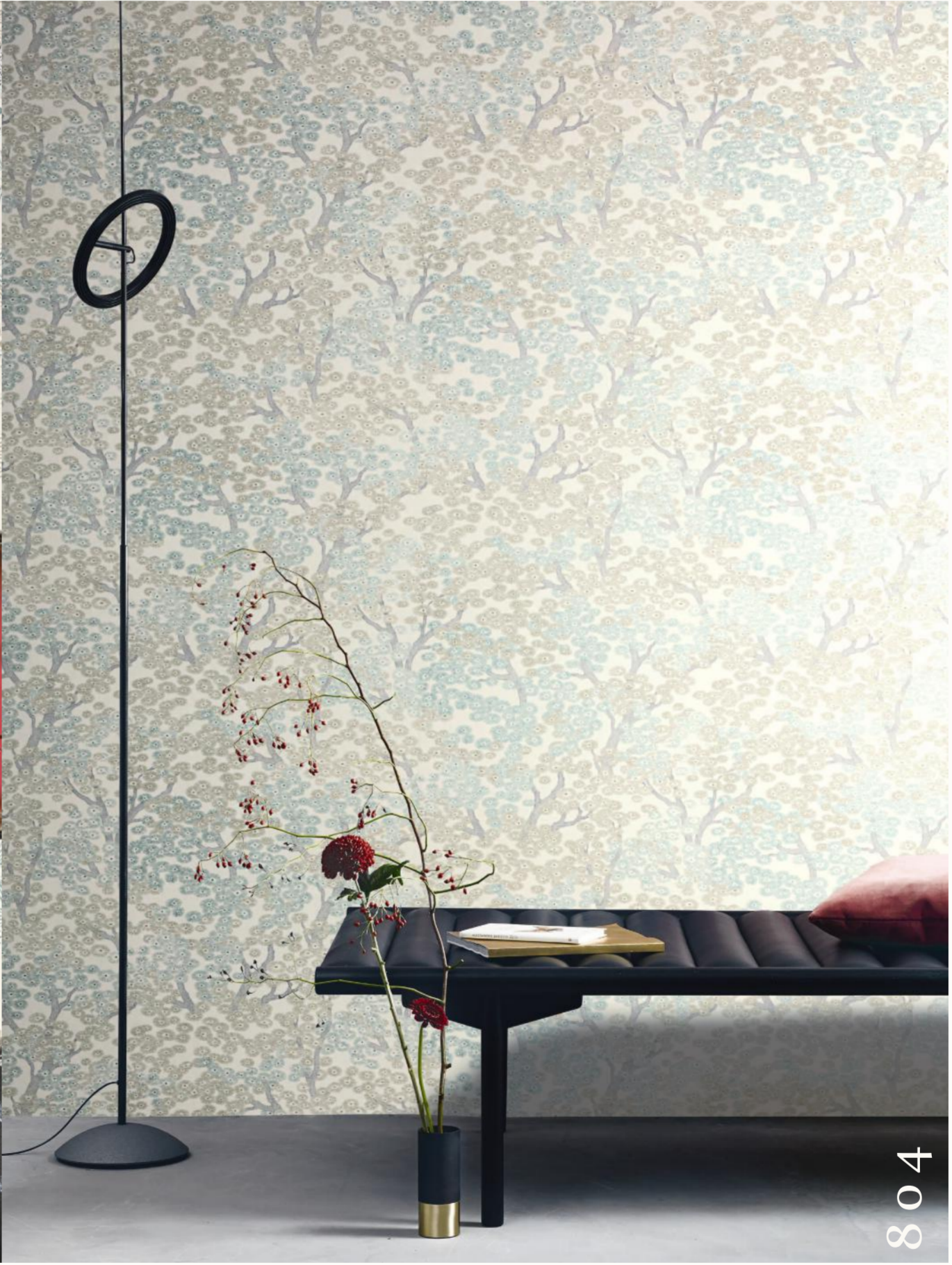


KIM 501 – p.39



KIM 502 – p.21





KIM 804

Yuka Dew

KIM 108

Haru Meadow





KIM108 - p.02



ORB101 - p.03



RYT009 - p.04

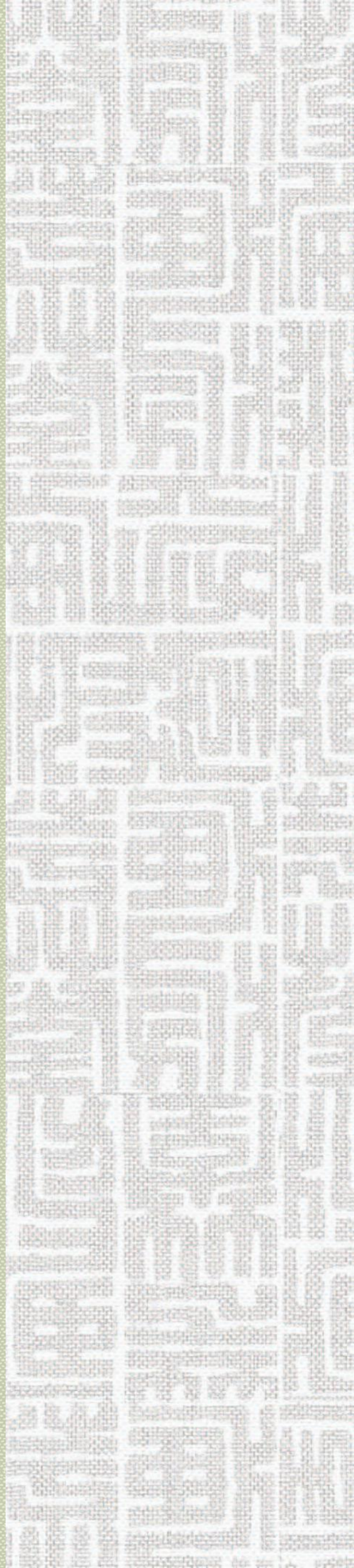
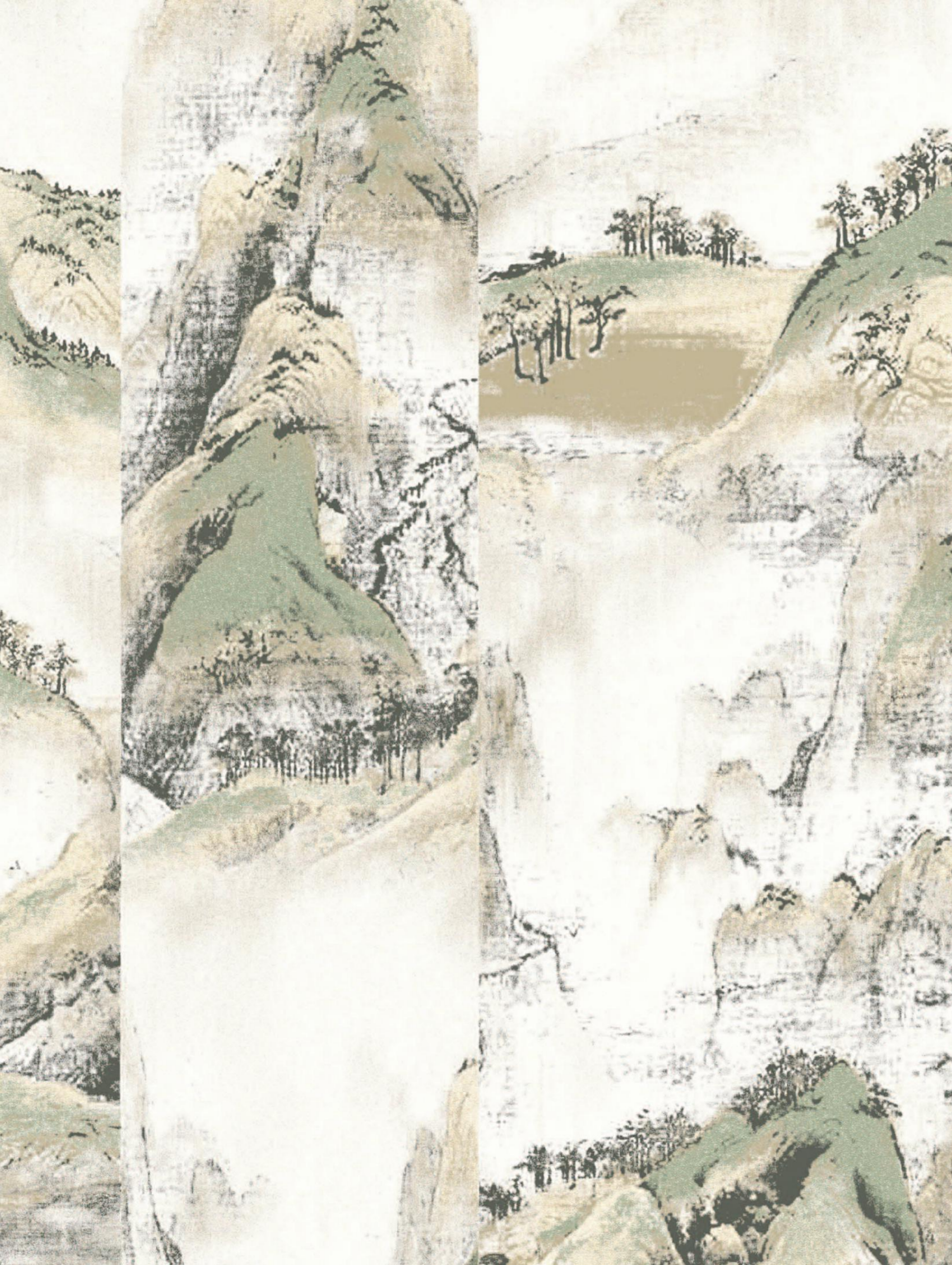


KIM504 - p.05

KIM 303

Akiyama Meadow

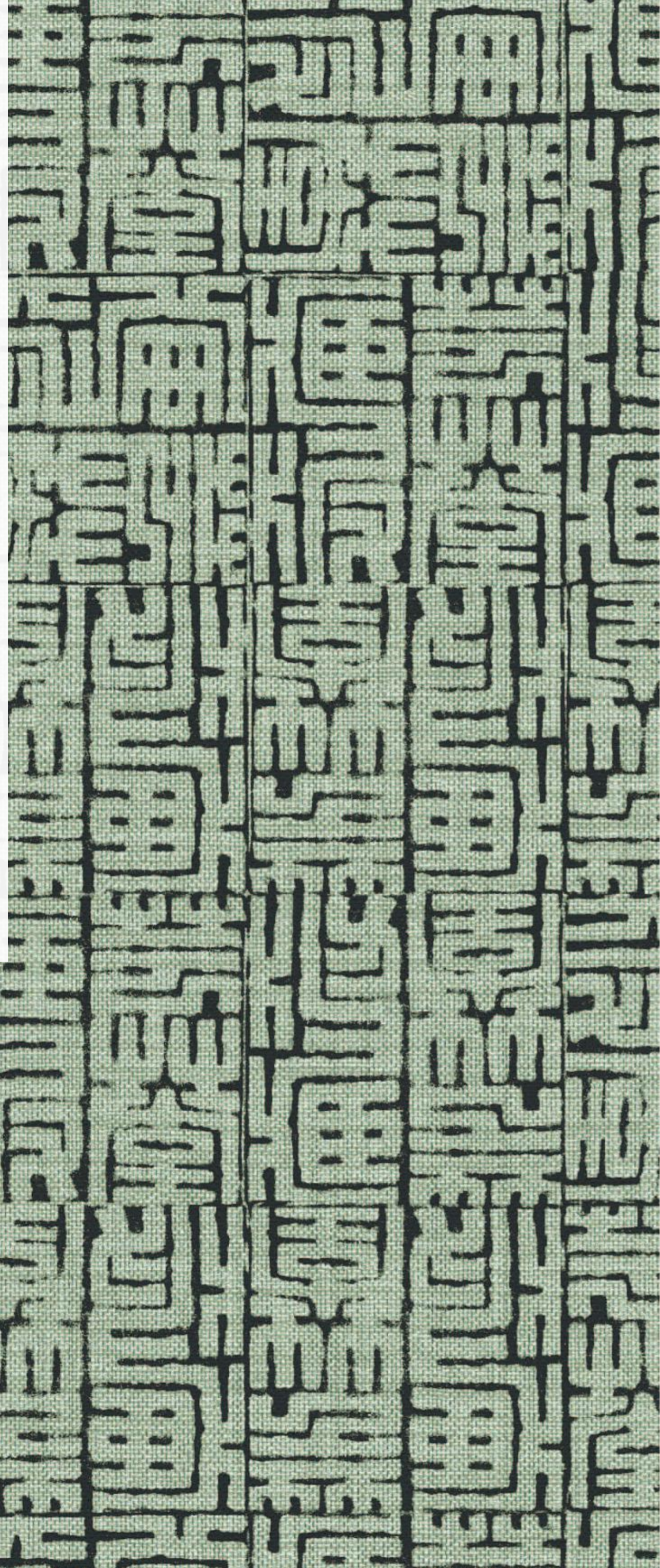




KIM 204

Kimora Topiara

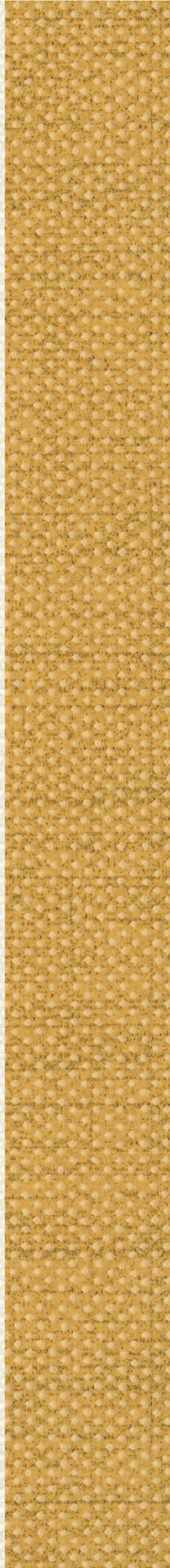




KIM605 - p.10



CLR001 - p.11



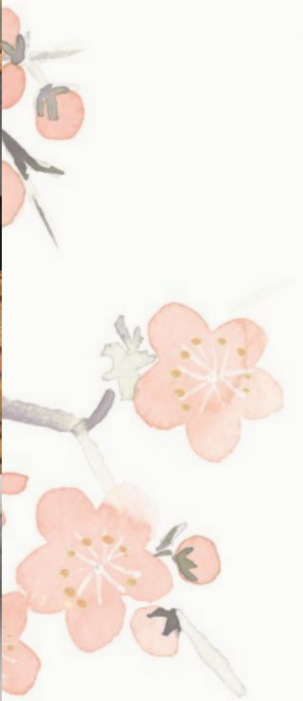
GAT603 - p.12

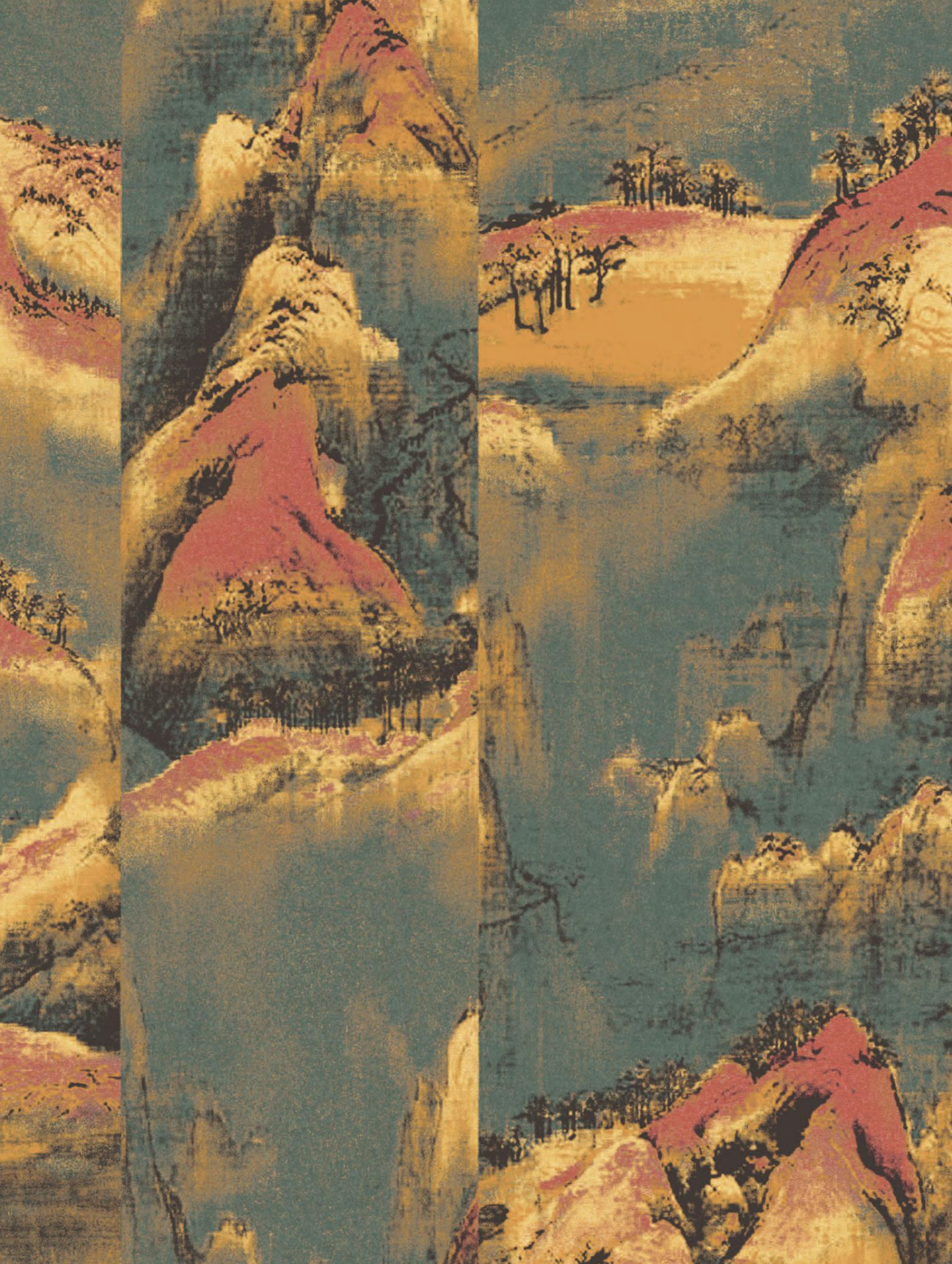


KIM204 - p.13

KIM 302

Akiyama Topiara





KIM302 - p.14



SOC116 - p.15



PR1804 - p.16



KIM404 - p.17



DGKIM 202

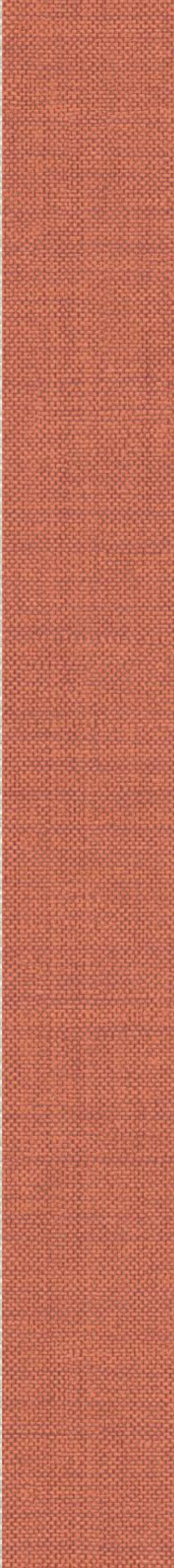
KIM 106

Haru Topiara





CLR011 - p.18



AGA702 - p.19



KIM204 - p.20

KIM 403

Fujita Topiara

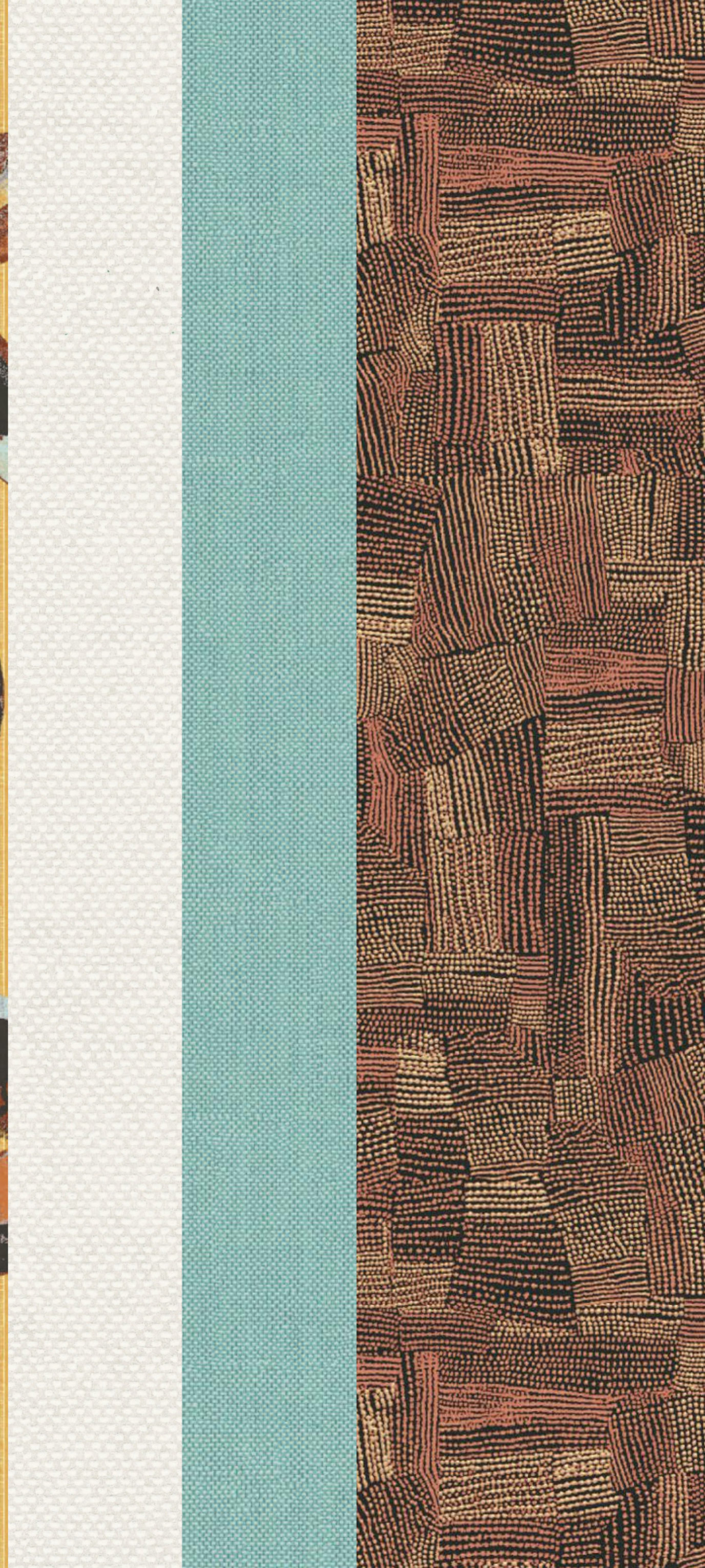


KIM 502

Daika Autumn



KIM502 - p.21



RYT006 - p.22

AGA703 - p.23

KIM403 - p.24

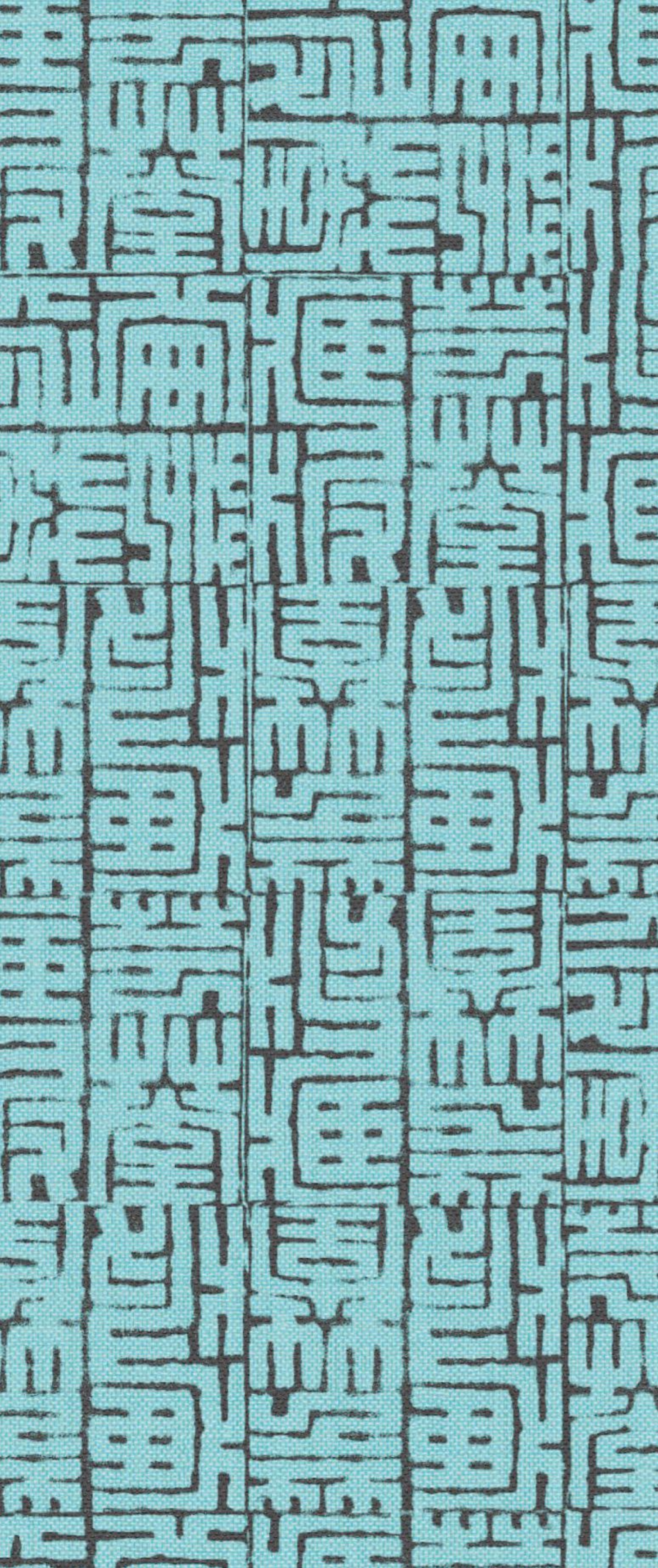


ARC 804

KIM 102

Haru Nile

KIMONO



KIM602 - p.25



ARC804 - p.26



CLR001 - p.27



KIM102 - p.28

美和

KIM 604

Hoshi Moonbeam



1.50m / 59" HEIGHT



DGKIM 101 MIWA MIST
1.27m / 50" WIDTH

1.50m / 59" HEIGHT



DGKIM 102 MIWA CLOUD
1.27m / 50" WIDTH

1.50m / 59" HEIGHT



DGKIM 103 MIWA TOPIARA
1.27m / 50" WIDTH

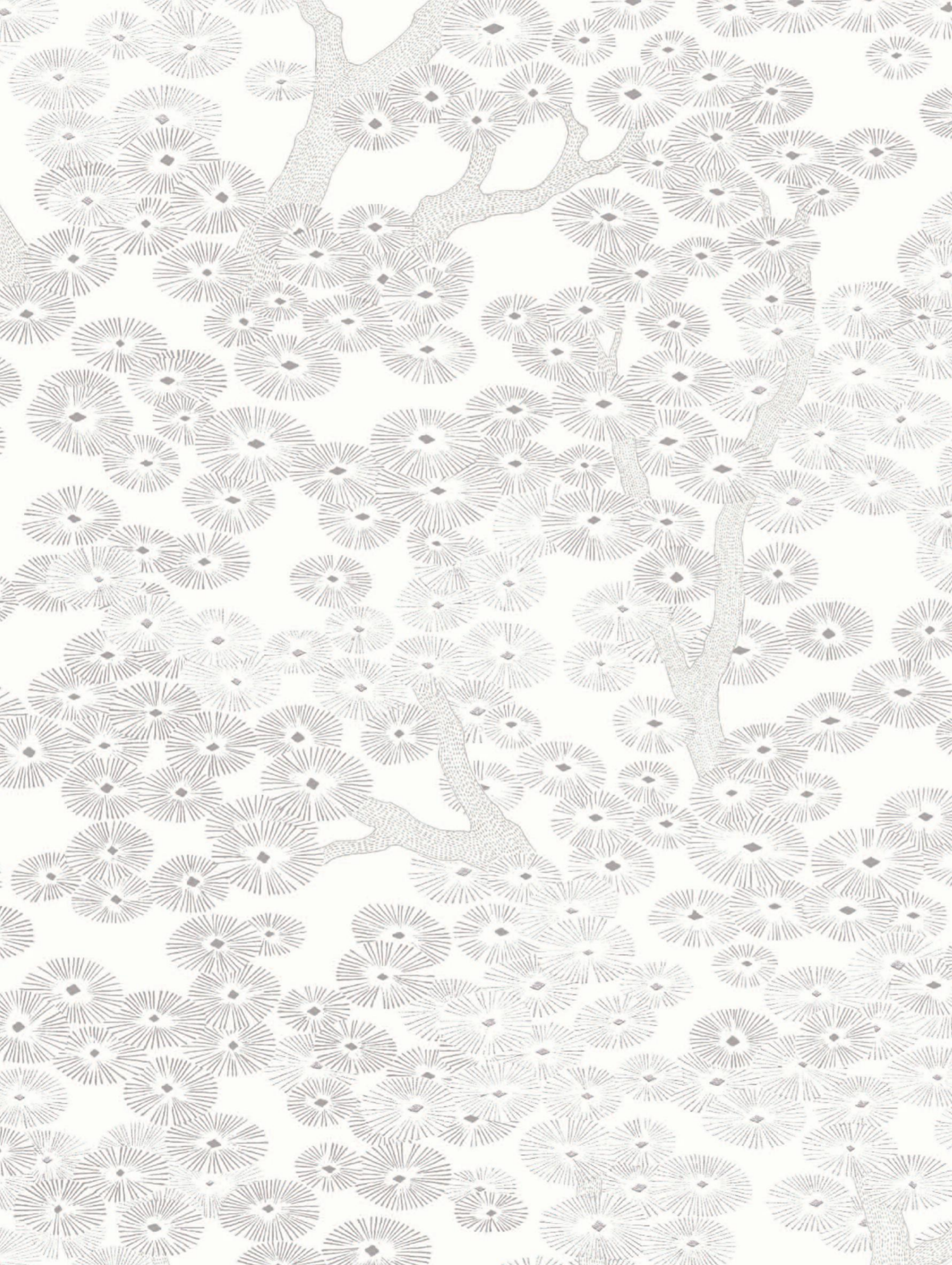
MIWA

coated nonwoven wallhanger

KIM 803

Yuka Moonbeam





KIM803 - p.30



ARC802 - p.31



SOC103 - p.32

KIM604 - p.33



KIM 604

Hoshi Moonbeam



KIM 203

Kimora Night

KIM 105

Haru Night





龍

DGKIM 301

Dragon Amparo



DRAGON

coated nonwoven panoramic



3.00m / 118.11" HEIGHT

DGKIM **301**

DRAGON AMPARO

1.27m / 50" WIDTH



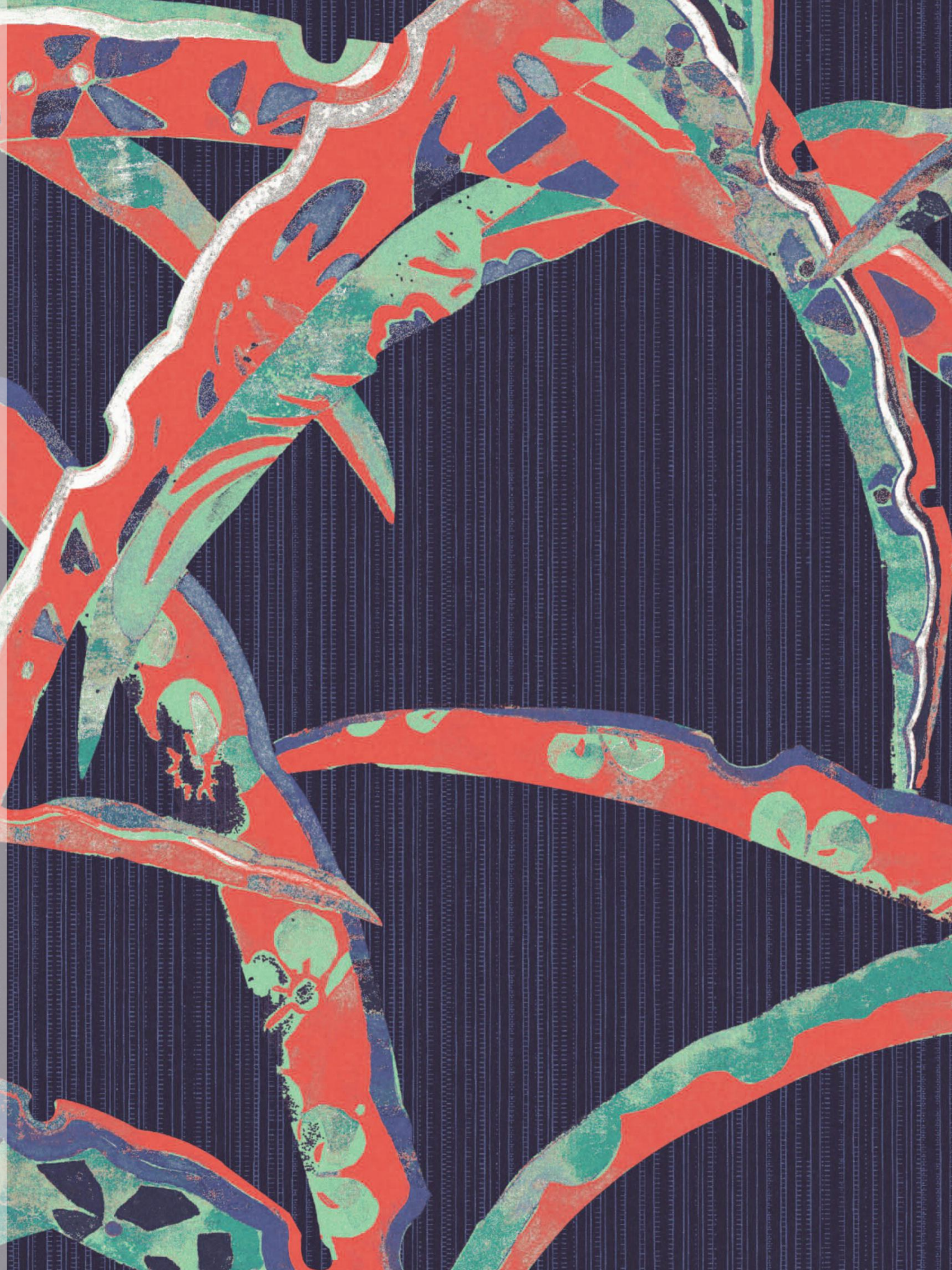
KIM 605

KIMONO

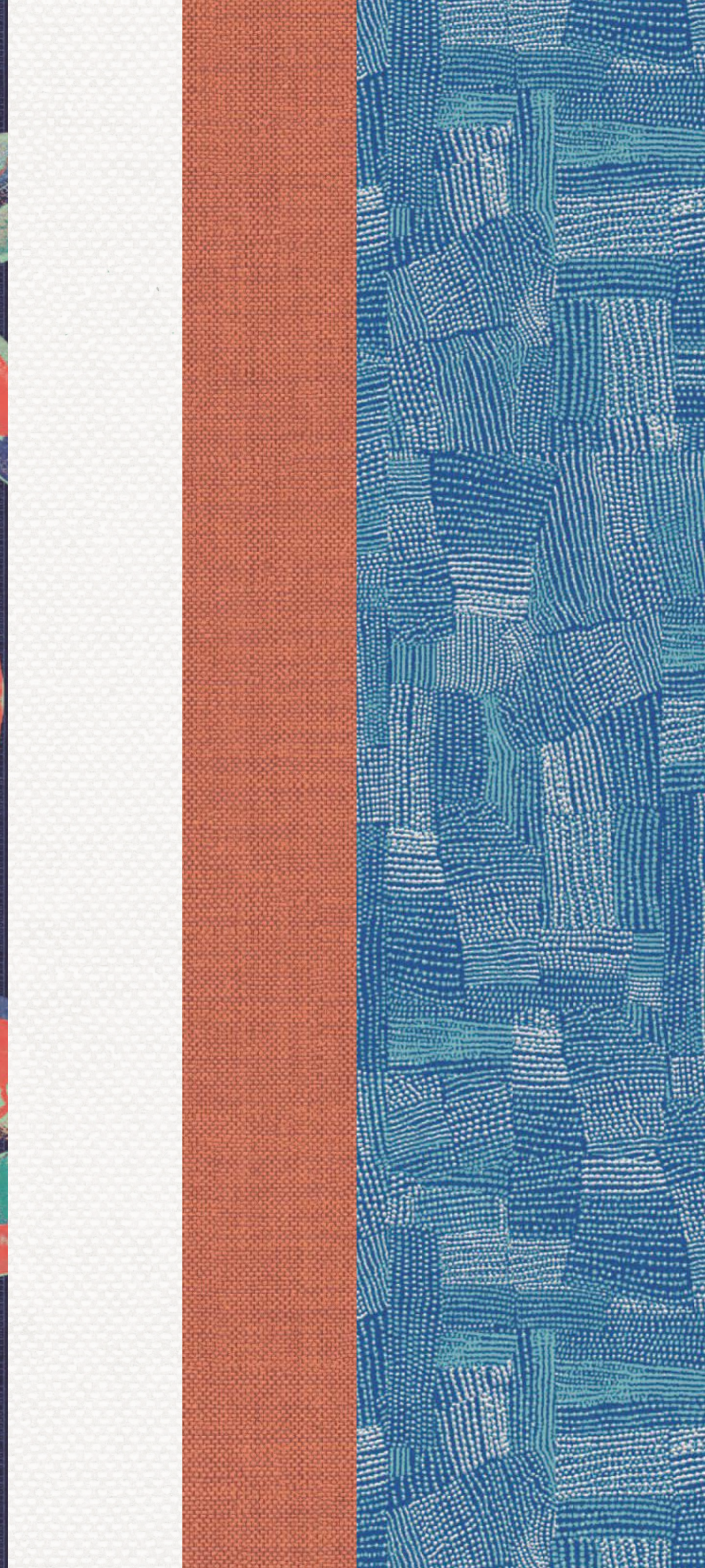


KIM 501

Daika Spicy



KIM501 - p.39



RYT001 - p.40

AGA702 - p.41

KIM401 - p.42

KIM 801

Yuka Amparo





ARC801 - p.43



ORB110 - p.44



AGA701 - p.45



KIM801 - p.46



KIM 402
Fujita Angora



KIM 104
Haru Oyster



KIM 202

Kimora Oyster





KIM402 - p.48



ORB101 - p.49



RYT001 - p.50



KIM202 - p.51

川

DGKIM 202

River Dew



3.00m / 118.11" HEIGHT



DGKIM 2011

DGKIM 2012

DGKIM 2013

1 length: 1.27m / 50" WIDTH

RIVER MIST

3.00m / 118.11" HEIGHT



DGKIM 2031

DGKIM 2032

DGKIM 2033

1 length: 1.27m / 50" WIDTH

RIVER NIGHT

3.00m / 118.11" HEIGHT



DGKIM 2021

DGKIM 2022

DGKIM 2023

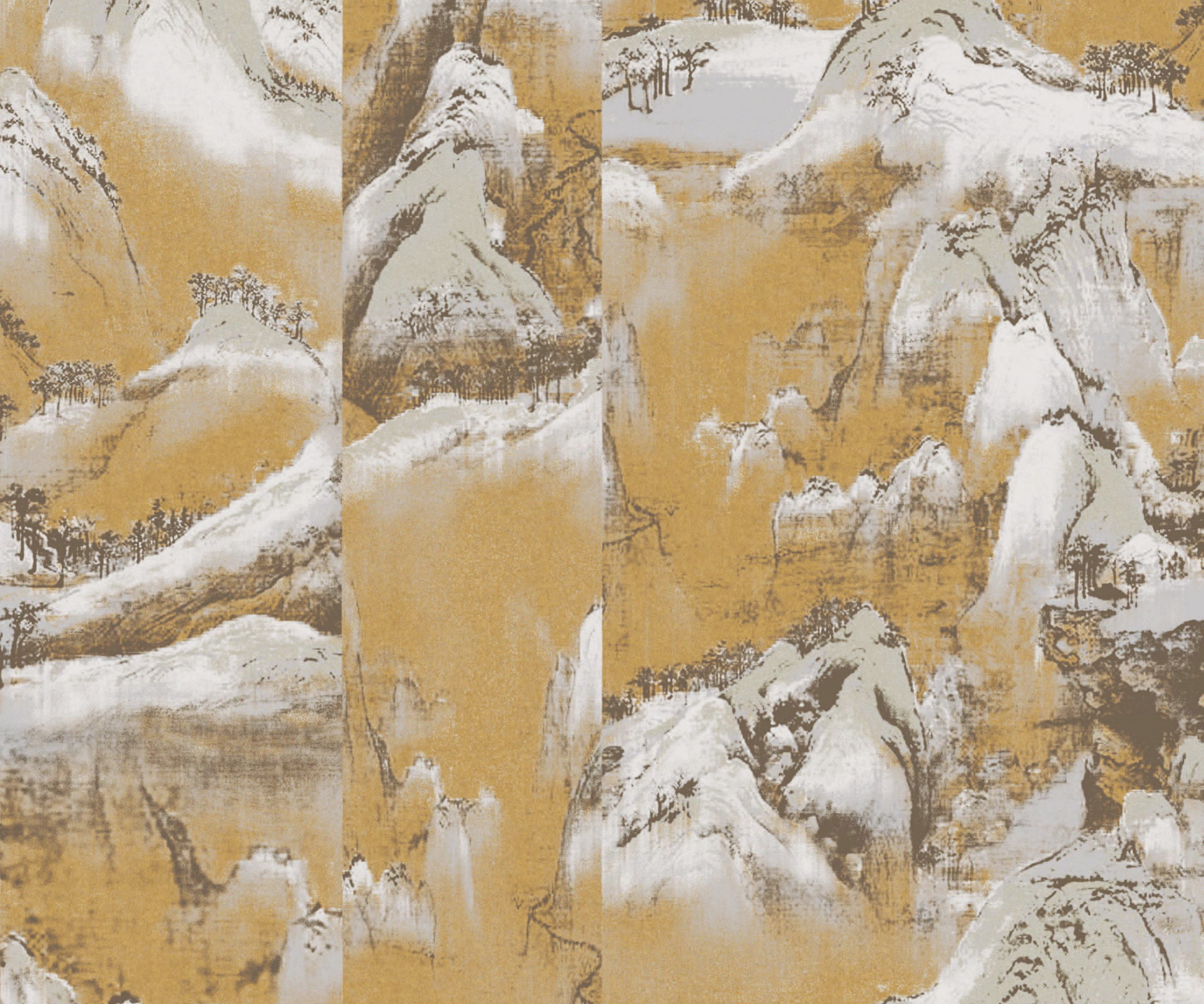
1 length: 1.27m / 50" WIDTH

RIVER DEW

RIVER

coated nonwoven panoramic

KIMONO



KIM 603
Hoshi Gold



KIM 301

Akiyama Gold





KIM 802

KIM 503

Daika Gold





KIM802 - p.54



ARC804 - p.55



RTS508 - p.56

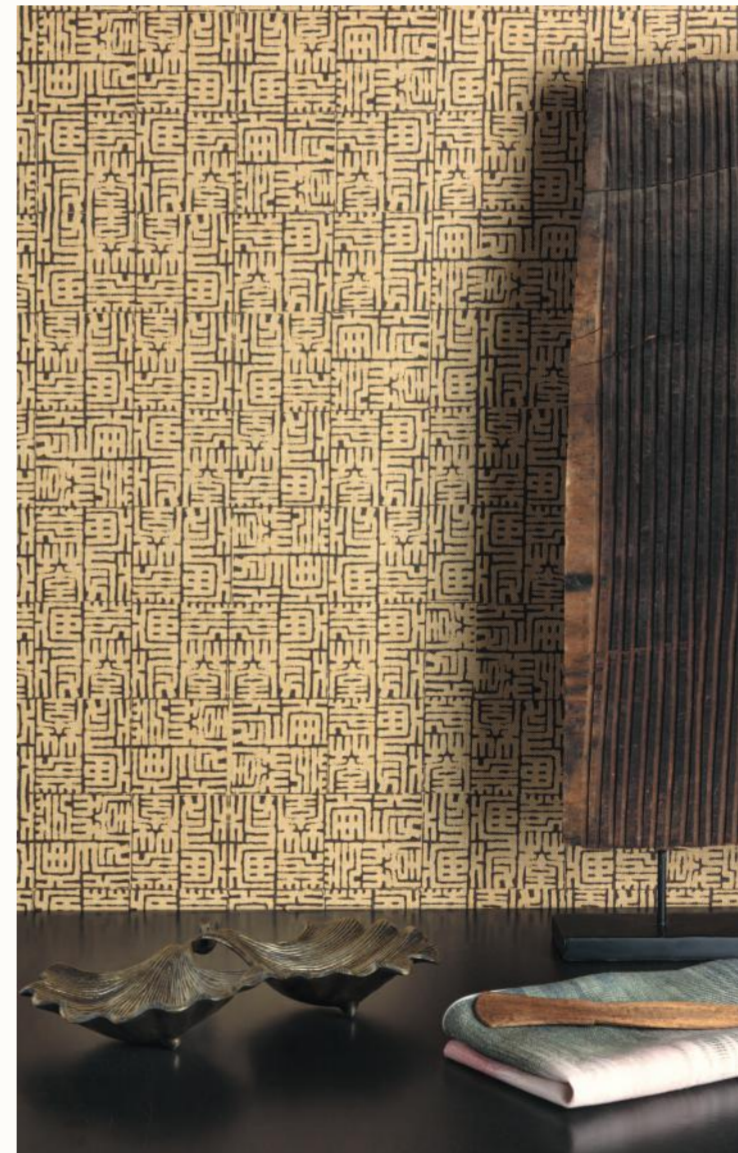


KIM503 - p.57



KIM 103

Haru Gold



KIM 603

KIMONO



KIM103 - p.58



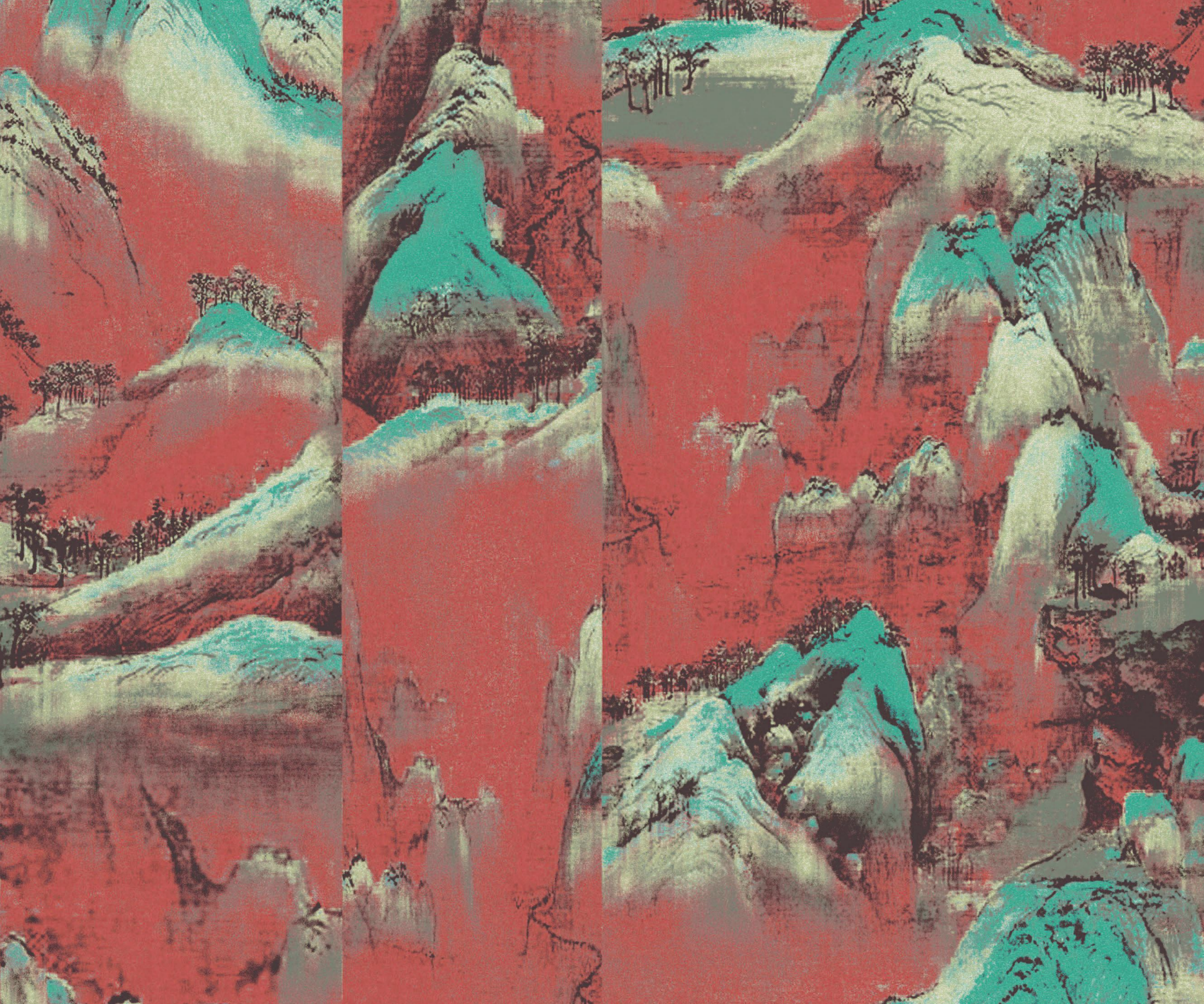
SOC115 - p.59



CLR001 - p.60



KIM603 - p.61



ORB 105
Orbit Farn



KIM 304

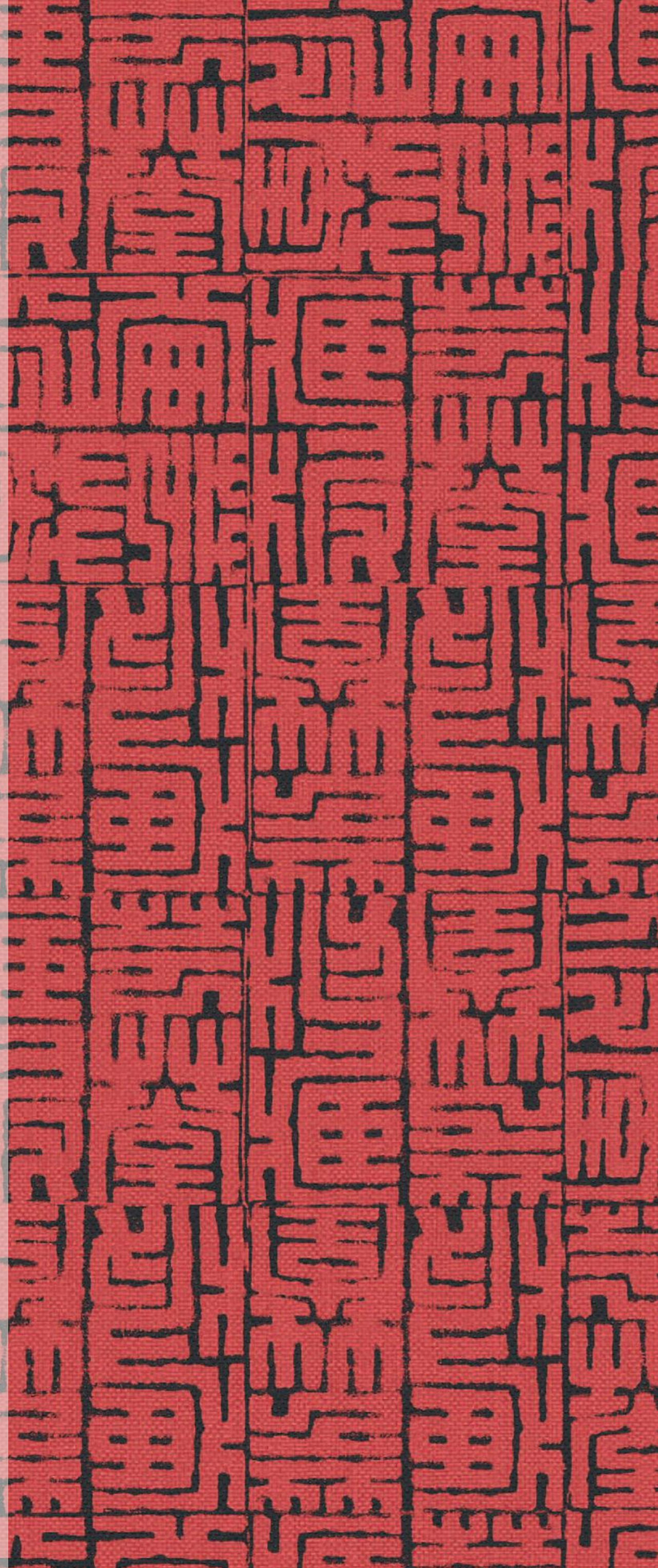
Akiyama Spicy



KIM 107

Haru Aurora





KIM601 - p.63



CLR001 - p.64



ORB105 - p.65

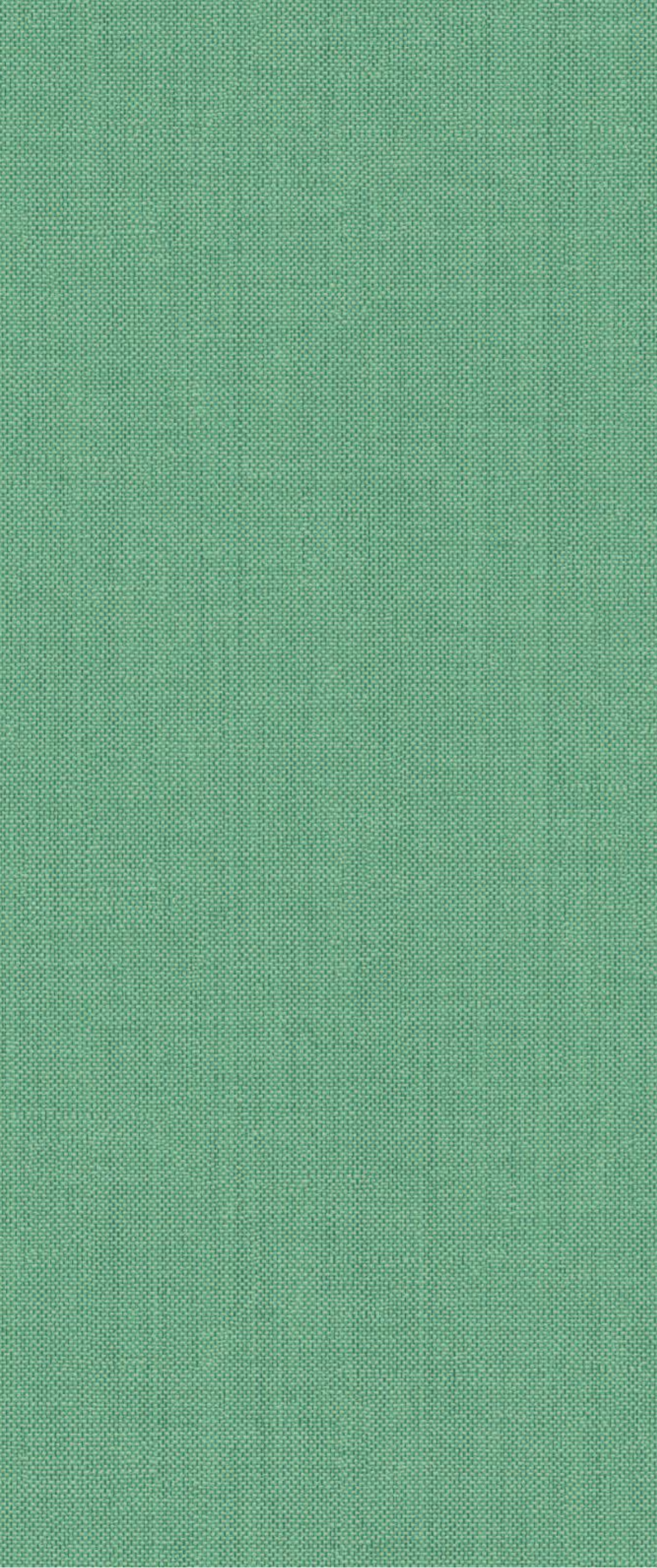


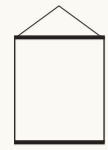
KIM107 - p.66

KIM 201

Kimora Spicy







1 wallhanger
1.27m x 1.50m
 50" x 59"

coated nonwoven WALLHANGER

NEW!

EUROCLASS B-s1,d0
 Class A ASTM E84

☀️
 • spongeable

MIWA

Mist p.29



1.50m / 59" HEIGHT

DGKIM**101**
 1.27m / 50" WIDTH

Cloud p.29



1.50m / 59" HEIGHT

DGKIM**102**
 1.27m / 50" WIDTH

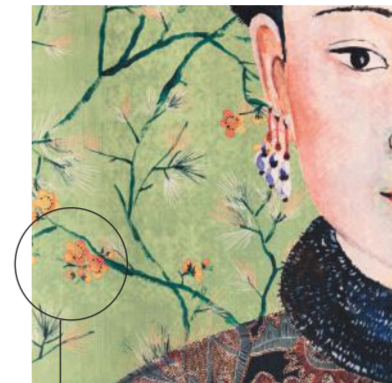
Topiara p.29



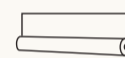
1.50m / 59" HEIGHT

DGKIM**103**
 1.27m / 50" WIDTH

Transparent hanging system &
 black wooden hanger included.



The light structure in the background,
 gives the design an extra dimension!



1 length
1.27m x 3.00m
 50" x 118.11"

coated nonwoven PANORAMICS

To decorate larger walls, **the design can be expanded** by length or set of panels.
A length can be used on its own for smaller walls.

EUROCLASS B-s1,d0
 Class A ASTM E84

☀️
 • spongeable at time of hanging

RIVER

Mist p.52



3.00m / 118.11" HEIGHT

DGKIM2013

DGKIM**2011** DGKIM**2012** DGKIM**2013**

1 LENGTH: 1.27m / 50" WIDTH

RIVER

Dew p.52



3.00m / 118.11" HEIGHT

DGKIM2023

DGKIM**2021** DGKIM**2022** DGKIM**2023**

1 LENGTH: 1.27m / 50" WIDTH

RIVER

Night p.52



3.00m / 118.11" HEIGHT

DGKIM2033

DGKIM**2031** DGKIM**2032** DGKIM**2033**

1 LENGTH: 1.27m / 50" WIDTH

DRAGON

Amparo p.38



3.00m / 118.11" HEIGHT

DGKIM301

DGKIM301

DGKIM**301**

1 LENGTH: 1.27m / 50" WIDTH

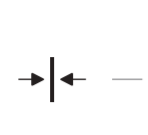
The **white borders** at the top and bottom
 are part of the design!



The light structure in the background,
 gives the design an extra dimension!



SYMBOLS



straight match
raccord droit
Gerader Match
casa recto
recht rapport



offset match
raccord sauté
versetzer Ansatz
casa con el dibujo
verspringend rapport



free match
raccord libre
Ansatzfrei
casa libre
vrije aanzet



reverse the lengths
inverser les lés
gestürzt kleben
alternar el sentido
banen storten



apply adhesive to the wall with
pre-mixed PVAc based adhesive
encollage du mur avec colle intissé
prête à l'emploi à base de PVAc



removable
retirable
Abnehmbar
retirable
afneembaar



washable
lavable
Wasserbeständig
lavable
afwasbaar



* spongeable at time of hanging
* épongeable au moment de poser
* Sofort nach Anbringung abwaschbar
* lavable en el momento de la colocación
* afwasbaar tijdens het behangen



light stability
solidité
Lichtechtheit ≥ 5
solidez a la luz
lichtechtheid

The value for the darker colours can be higher, that of the lighter shades is somewhat lower. / La valeur pour les couleurs sombres peut être supérieure, celle des teintes plus claires un peu plus faible. / Die Werte für dunkle Farben können höher sein, die für helle Farben niedriger. / El valor de los colores más oscuros puede ser más alto, el de los colores más claros es algo más bajo. / De waarde van de donkere kleuren kan hoger liggen, die van de lichte tinten iets lager.

opacity/ opacité / opazität / opacidad / opaciteit

Non woven wallcovering is a natural product, which makes it possible for colour differences to occur. Thin and light-coloured coated wallcoverings are more sensitive to these differences and require a thorough preparation of the foundation. Preferably, it should be a light uniform colour, or a plain covered wallcovering can be placed as a base. Plain, glossy wallcovering also requires extra care when treating the foundation, as unevenness can also be visible here. / Le revêtement mural intissé est un produit naturel, entraînant d'éventuelles différences de couleur. Le papier peint intissé fin et clair y est plus sensible et demande une préparation approfondie de la base. Celle-ci aura de préférence une couleur claire uniforme ou un papier peint intissé lisse peut être placé comme base. Le papier peint lisse et brillant demande aussi une attention supplémentaire lors du traitement de la base, des irrégularités peuvent ici aussi être visibles. / Vlieswandbekleidung ist ein Naturprodukt, bei dem sich Farbunterschiede ergeben können. Dünne und helle Vliestapeten reagieren daher empfindlicher und brauchen eine gründliche Untergrundvorbereitung. Diese Vorbereitung erreicht man am besten mit einer gleichmäßigen hellen Farbe oder mit einer Vlies-tapete als Grundlage. Auch bei einfarbigen Tapeten mit Glanz ist bei der Behandlung des Untergrunds vorsichtig vorzugehen, weil Unehbehalten gut sichtbar sein können. / El revestimiento de pared recubierto es un producto natural, por lo que es posible que haya diferencias de color. Una preparación concienzuda de la base es muy importante a la hora de colocar un papel recubierto fino o de color claro. Preferentemente tendrá un color uniforme claro, o bien puede utilizarse como base un papel recubierto fino liso. Los papeles pintados lisos o brillantes también requieren una atención especial en el tratamiento de la base, ya que en estos casos también puede resultar visible cualquier irregularidad. / Vlieswandbekleidung is een natuurproduct, wat maakt dat kleurverschillen mogelijk zijn. Dun en lichtgekleurd vliesbehang is hier gevoelig voor en vraagt een grondige voorbereiding van de ondergrond. Deze krijgt bij voorkeur een uniform lichte kleur, of er kan effen vliesbehang als basis geplaatst worden. Ook glanzend, effen behang vraagt extra aandacht bij de behandeling van de ondergrond, oneffenheden kunnen ook hier zichtbaar zijn.

SEE HANGING INSTRUCTIONS ON THE LABEL.

CONSEILS DE POSE SUR L'ÉTIQUETTE.

ANWENDUNGSVORSCHRIFTEN FINDEN SIE AUF DEM ETIKETT.

LAS INSTRUCCIONES DE COLOCACIÓN: EN LA ETIQUETA.

ZIE ETIKET VOOR BEHANGINSTRUCTIES.

HARU

OFFSET MATCH
64cm/25.2"



53cm / 20.9"

64cm / 25.2"

KIM 102	Haru Nile	28
KIM 103	Haru Gold	58
KIM 104	Haru Oyster	47
KIM 105	Haru Night	37
KIM 106	Haru Topiara	20
KIM 107	Haru Aurora	66
KIM 108	Haru Meadow	02

HOSHI

OFFSET MATCH
64cm/25.2"



53cm / 20.9"

64cm / 25.2"

KIM 601	Hoshi Spicy	63
KIM 602	Hoshi Nile	25
KIM 603	Hoshi Gold	61
KIM 604	Hoshi Moonbeam	09 / 33
KIM 605	Hoshi Lime	10

KIMORA

OFFSET MATCH
64cm/25.2"



53cm / 20.9"

64cm / 25.2"

KIM 201	Kimora Spicy	69
KIM 202	Kimora Oyster	51
KIM 203	Kimora Night	34
KIM 204	Kimora Topiara	13

YUKA

OFFSET MATCH
64cm/25.2"



53cm / 20.9"

64cm / 25.2"

KIM 801	Yuka Amparo	46
KIM 802	Yuka Gold	54
KIM 803	Yuka Moonbeam	30
KIM 804	Yuka Dew	01

AKIYAMA

OFFSET MATCH
64cm/25.2"



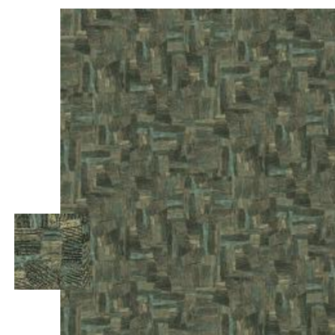
53cm / 20.9"

64cm / 25.2"

KIM 301	Akiyama Gold	53
KIM 302	Akiyama Topiara	14
KIM 303	Akiyama Meadow	06
KIM 304	Akiyama Spicy	62

FUJITA

OFFSET MATCH
64cm/25.2"



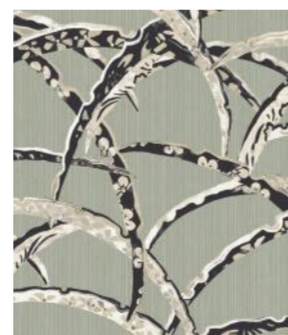
53cm / 20.9"

64cm / 25.2"

KIM 401	Fujita Amparo	42
KIM 402	Fujita Angora	48
KIM 403	Fujita Topiara	24
KIM 404	Fujita Lime	17

DAIKA

OFFSET MATCH
64cm/25.2"



53cm / 20.9"

64cm / 25.2"

KIM 501	Daika Spicy	39
KIM 502	Daika Autumn	21
KIM 503	Daika Gold	57
KIM 504	Daika Olivine	05

* spongeable at time of hanging

ORBIT

FREE MATCH
REVERSE THE LENGTHS



AGA 701	Orbit Amparo	45
AGA 702	Orbit Mandarin	19 / 41
AGA 703	Orbit Nile	23
AGA 704	Orbit Amazon	67
ORB 101	Orbit Snow	03 / 49
ORB 105	Orbit Farn	65
ORB 110	Orbit Sand	44

LYS / RYTHM

FREE MATCH
REVERSE THE LENGTHS



ARC 801	Lys White	43
ARC 804	Lys Curry	26 / 55
CLR 001	Lys Snow	11 / 27 / 60 / 64
CLR 011	Lys Papyrus	18 / 36
RYT 001	Rythm Egret	40 / 50
RYT 002	Rythm Dawn	31
RYT 006	Rythm Mastic	22
RYT 008	Rythm Moss	08
RYT 009	Rythm Meadow	04

ATTENTION!

Slight colour differences between the samples in this collection, photographic representation and the rolls delivered are possible.

De légères différences de couleurs entre les échantillons ainsi que les images et les rouleaux fournis pourraient être possibles.

Leichte Farbabweichungen zwischen den Mustern und Bildern in der Kollektion und den gelieferten Rollen sind möglich.

Es probable que haya ligeras diferencias de color entre las muestras y las fotos de la colección con los rollos entregados.

Lichte kleurafwijkingen tussen de stalen in deze collectie, de fotografische weergave en de geleverde rollen zijn mogelijk.

DENIA

FREE MATCH
REVERSE THE LENGTHS



RTS 508	Denia Snow	56
----------------	------------	----

DIXIE

FREE MATCH
REVERSE THE LENGTHS



GAT 603	Dixie Cylon	12
----------------	-------------	----

APONIA

OFFSET MATCH
64cm/25.2"



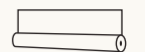
PRI 804	Aponia Acacia	16
SOC 103	Aponia Star	32 / 35
SOC 110	Aponia Oyster	68
SOC 115	Aponia Coffee	59
SOC 116	Aponia Meadow	15

KAI

FREE MATCH



GLA 603	Kai Moonlight	07
----------------	---------------	----



1 roll

0.53m x 10.05m

20.9" x 11yd

nonwoven



EUROCLASS B-s1,d0
Class A ASTM E84

着物

LUXURIOUS BELGIAN WALLCOVERINGS *kimono*

WITH RESPECT
FOR NATURE
& ENVIRONMENT



*Information sur le niveau d'émission de substances volatiles dans l'air intérieur, présentées un risque de toxicité par inhalation, sur une échelle de classe allant de A+ (très faibles émissions) à C (fortes émissions).



formaldehyde-safe



EN15102:2007+A1:2011



The mark of responsible forestry

