

COLECÇÃO  
HOSPITALITY

COLLECTION  
HOSPITALITY

COLLECTION  
HOSPITALITY

# Atlantis FR

PELE SINTÉTICA  
PARA CONTRACT

SYNTHETIC LEATHER FOR  
THE CONTRACT MARKET

TISSU ENDUIT  
POUR COLLECTIVITÉS

ASPECTO PELE NATURAL

NATURAL LEATHER LOOK

ASPECT CUIR NATURELLE



Institucional  
Institutionnel



Residencial  
Home  
Residentiel



Hotelaria  
Hotel  
Hospitalité



Escritórios  
Office  
Bureau



Restauração  
Restaurant  
Restaurant

carlos natal®  
feeling beyond quality

Composição | Composition | Composition 79% PVC | 21% PES

Peso | Weight | Poids 520 g/m<sup>2</sup> + 20 g/m<sup>2</sup>

Largura | Width | Laize 140 cm ± 2 cm

Comprimento das peças | Roll length | Longueur des pièces 40 m

Espessura | Thickness | Épaisseur 0,90 mm ± 0,10 mm

  
carlos natal®  
feeling beyond quality



**Classe ignífuga**  
Flammability  
Classement de feu

EN 1021-1 (Cigarro | Cigarette | Cigarette)  
EN 1021-2 (Chama | Flame | Flamme)  
BS 5852 PART 0  
BS5852 PART 1  
IMO PART 8 UPHLOSTERY



**Abrasão Martindale**  
Martindale abrasion  
Abrasion martindale

EN ISO 12947-2 (12kPa):  
Nº de ciclos: 100.000



**Resistência cor à luz**  
Colour fastness to artificial light  
Tenue à la lumière

EN ISO 105 B02: > 5



**Antibacteriano**  
Colour fastness to artificial light  
Tenue à la lumière

ISO 22196 Taxa de inibição: > 99,9% (sem crescimento bacteriano)  
ISO 22196 Inhibition rate: > 99,9% (no bacterial growth)  
ISO 22196 Taux d'inhibition: > 99,9% (pas de croissance bactérienne)



**Resistência à Hidrólise**  
Hydrolysis resistant  
Résistant à l'hydrolyse



**SVHC 155 químicos, regulamento (EC) nº 1907/2006**  
SVHC 155 chemicals, regulation (EC) nº 1907/2006  
SVHC 155 chimiques, réglementation (EC) nº 1907/2006



**Ausência de Azo-Compostos, Ftalatos e DMF**  
Absence of azo compounds, phthalates and DMF  
Absence de composés azoïques, les phthalates et le DMF



**Impermeável à água**  
Waterproof fabric  
Imperméabilité à l'eau



**Longevidade**  
Long lasting  
Longévité



**Poderão existir pequenas variações de cores entre os diferentes lotes.**  
Batch to batch variations may occur within commercial tolerances.  
Des variations tolérables de coloris d'un bain à outre peuvent se manifester.

## LIMPEZA | CLEANING | NETTOYAGE

Uma limpeza regular é fundamental para preservar a aparência dos tecidos e prolongar a sua vida útil.  
Limpeza normal: aspirar regularmente com força média, de preferência semanalmente. Para remover manchas não gordurosas limpar com um pano sem pêlos ou uma esponja humedecidos com água morna.  
Atenção: não esfregar fortemente os tecidos para evitar a perda de cores.

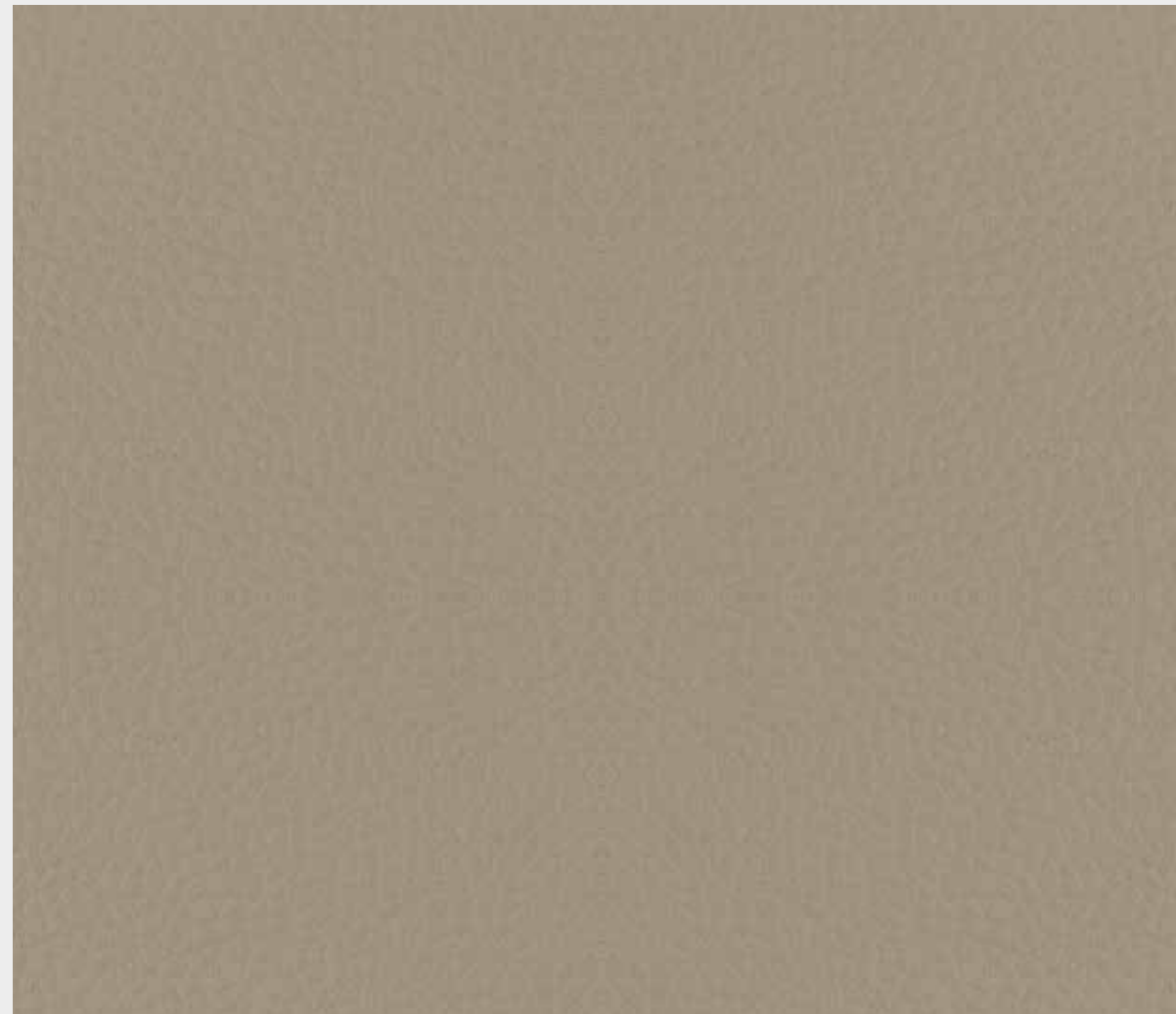
Regular cleaning is important in order to keep the upholstery looking its best and to prolong its life.  
Normal cleaning: vacuum frequently on medium power, ideally every week. Remove non-greasy stains by carefully dabbing with a lint-free cloth or sponge wrung out in clean warm water.  
Be careful: do not rub the material too hard because this could result in loss of colour.

Un nettoyage régulier et important si l'on souhaite préserver l'apparence du tissu d'ameublement et allonger sa durée de vie.  
Nettoyage ordinaire: nettoyer régulièrement à l'aspirateur (éventuellement à puissance réduite), de préférence une fois par semaine. Pour enlever une tache non grasse, tremper dans de l'eau chaude un chiffon propre non pelucheux, ou une éponge, essorer et frotter doucement.  
Attention: ne pas frotter trop fort le tissu, cela pourrait occasionner un blanchiment.

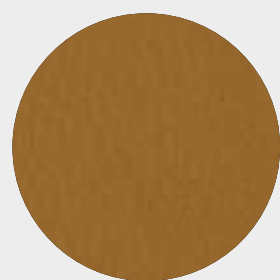
Carlos Natal, lda | Parque Empresarial do Casarão - Avenida das Ferragens, 87  
3750-860 Águeda | Portugal  
+351 234 622 114 | comercial@carlosnatal.pt | www.carlosnatal.pt

# Atlantis FR

**Pelgon**  
Coated fabric | Tissu enduit



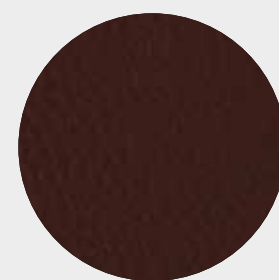
**TERRA** 01008024



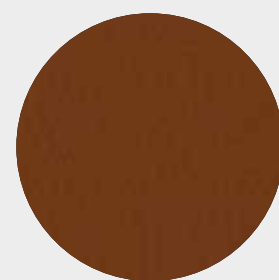
**NATURAL**  
01008020



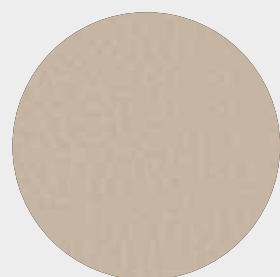
**AMÊNDOA**  
01008025



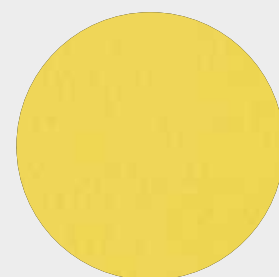
**CHOCOLATE**  
01008009



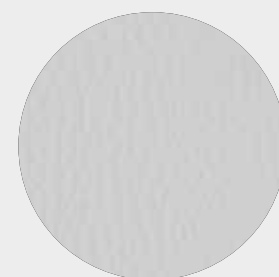
**ARGILA**  
01008021



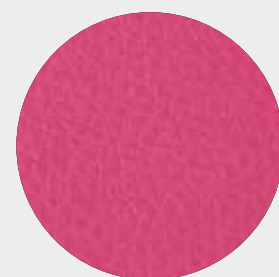
**DUNA**  
01008003



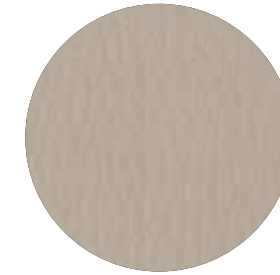
**LIMÃO**  
01008005



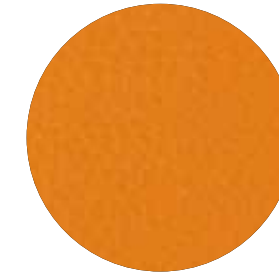
**NEVE**  
01008011



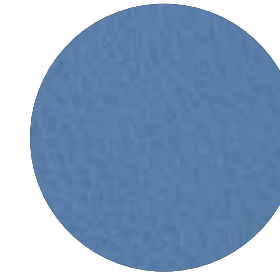
**ROSA**  
01008027



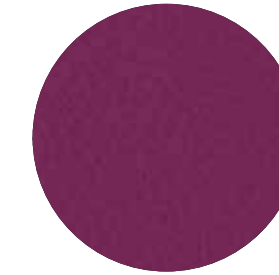
**PÉROLA**  
01008018



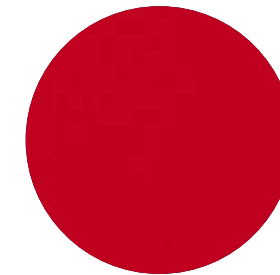
**TANGERINA**  
01008026



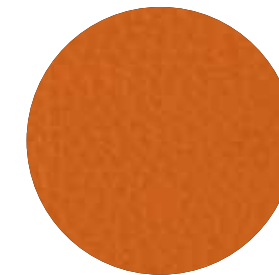
**CÉU**  
01008014



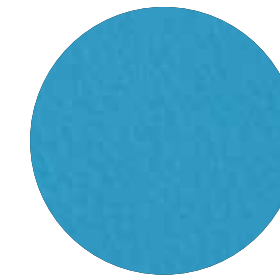
**CYCLAME**  
01008012



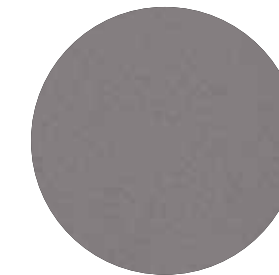
**MORANGO**  
01008004



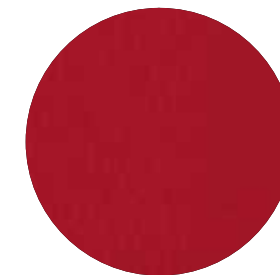
**LARANJA**  
01008010



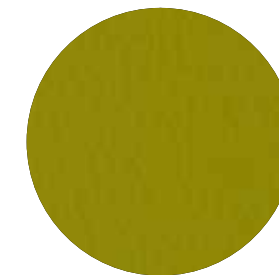
**TURQUESA**  
01008029



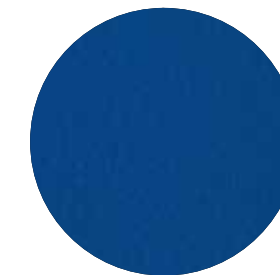
**FURACÃO**  
01008006



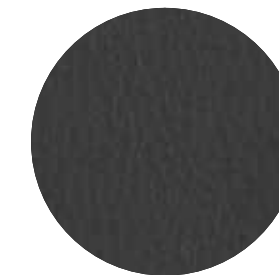
**CARMIM**  
01008023



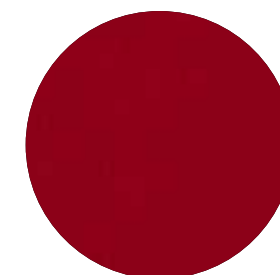
**KIWI**  
01008013



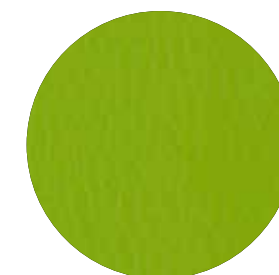
**LAGUNA**  
01008015



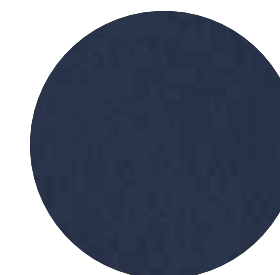
**ANTRACITE**  
01008016



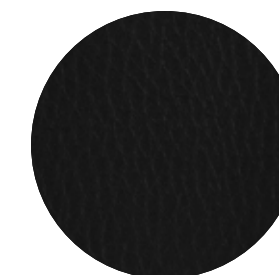
**CEREJA**  
01008017



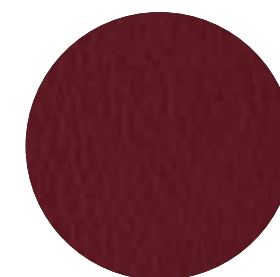
**PRIMAVERA**  
01008028



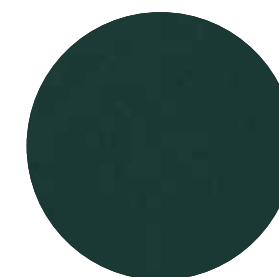
**AZURITE**  
01008002



**PRETO**  
01008001



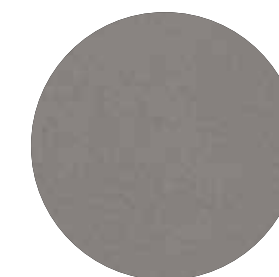
**VINHO**  
01008007



**SALSA**  
01008008



**CACAU**  
01008019



**RATO**  
01008022