

SCANLOX
SCANDINAVIAN LOGISTICS



COMPANY PROFILE

Get to know SCANLOX and how we operate, providing valuable insights into our expertise, innovative approach, and dedication to excellence. Explore our diverse product range and learn how our solutions can transform your intralogistics.

www.scanlox.com

SCANLOX

Who are we?



Shaping the Future of Automation

We aspire to create and add value to our customers intralogistics in Scandinavia through innovative automation solutions.

Founded in 2020, SCANLOX is a Danish company rooted in simplicity and flexibility, delivering cutting-edge AMR and AGV solutions tailored to evolving intralogistics needs. Inspired by pioneers like AGILOX and WEWO, we offer European technology designed for swift implementation and effortless scalability.

With over 100 years of combined experience, we focus on harmonizing automation, safety, and logistics to meet the unique and evolving needs of our customers.



Sales offices ○ Technical Support ○ Show-room ○ Training ○ Test Center

Sales Area

Denmark
Sweden (South)
Norway



Consultancy
Logistics
Automation
Project Management

Simulation
Proof of Concept
Risk Assessment
Functionality

Automation
IGV / AMR
Picking Solutions
Software
Other Technology

Implementation
Technical Setup
Project Management
Customer Training

Aftersales
Support
Service
Change Request

How We Operate

Autonomous Mobile Robots

AGILOX

Short Implementation Time



Flexible and Efficient Automation

AMRs offer a modern, efficient solution for automating internal logistics. With rapid implementation and minimal infrastructure requirements, they can be seamlessly integrated into your operation, minimizing downtime and delivering quick results.

Designed for flexibility, the AMRs are ideal for environments where production or warehouse layouts frequently change. Their laser-based navigation allows them to adapt to new routes without the need for physical guides, ensuring uninterrupted performance in dynamic settings.

With advanced safety systems and energy-efficient operations, these robots ensure reliable performance supporting a safer and more sustainable workplace.



Key Benefits

- Test Setup at Your Facility
- Quick and Seamless Integration
- Minimal Infrastructure Requirements
- SWARM Intelligence
- Cost-Efficiency
- Advanced Safety System
- Scalability for Growing Needs
- Future-Proof Automation



X-SWARM Technology

The advanced technology ensures seamless communication, dynamic tasks assignment, and uninterrupted operations. It enables quick deployment, while dynamic routing eliminates deadlocks, ensuring smooth workflows in the environment.

Automated Guided Vehicle

WEWO

Short Implementation Time



Optimized and Robust Automation

These AGVs are designed for reliable, long- or short-distance material handling, providing a robust automation solution to move goods efficiently across production floor, warehouses, or complex industrial environments.

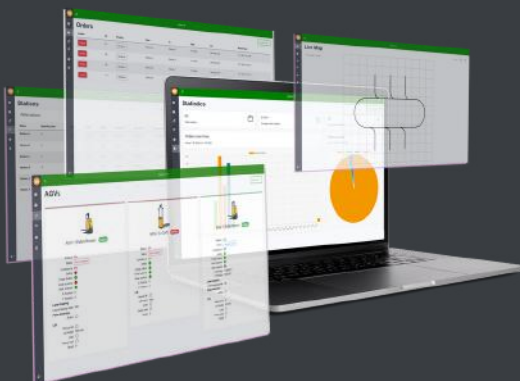
With multiple navigation methods, including laser-guided and optical solutions, these AGVs can be seamlessly integrated into various environments.

With a focus on reliability, the AGVs ensure smooth, uninterrupted material flow, reducing the need for manual labor and enhancing overall operational efficiency. These AGVs are ideal for businesses seeking dependable, scalable automation solutions to improve productivity and streamline material handling across areas.



Key Benefits

- Full-Feature AGV
- ATEX-Certified
- Multiple Navigation Methods
- High Efficiency and Reliability
- Customized Solutions
- Stainless Steel Options
- Safety Features



Fleet Management Software & WMS

The AGVs navigate using Navitec technology through contour scanning, ensuring precise movement and control. The Fleet Management Software ensures seamless AGV operations with features like traffic management, alarm handling, and MES/ERP integration. Paired with the WMS application for tracking goods and inventory, it provides full visibility and efficient operations.

Automated Guided Vehicle

WEWO Stainless Steel

Short Implementation Time



Built for Harsh Environments

These AGVs are designed to excel in challenging environments, such as the food and pharmaceutical industries. Their stainless steel construction ensures exceptional resistance to moisture, corrosive substances, and rigorous cleaning processes, meeting the highest hygiene standards.

These AGVs provide reliable and efficient material handling, even in demanding conditions, reducing downtime, and enhancing productivity. With their robust design and advanced automation, the WEWO Stainless Steel AGVs are the perfect choice for industries requiring durability and precision.



Key Benefits

- IP65
- Full-Feature AGV
- ATEX-Certified
- Multiple Navigation Methods
- High Efficiency and Reliability
- Customized Solutions
- Safety Features

Customizable



Customizable

All AGVs offer customizable options, allowing you to tailor the design and functionality to your specific needs, from payload capacity to specialized features, ensuring optimal performance in any operational setup.

Outdoor

An outdoor AGV is available, delivering reliable performance beyond the warehouse or factory floor. Designed for outdoor use, it ensures efficient material transport in diverse and challenging environments.

Outdoor



LED-Light Safety



LED-Light Safety Concept

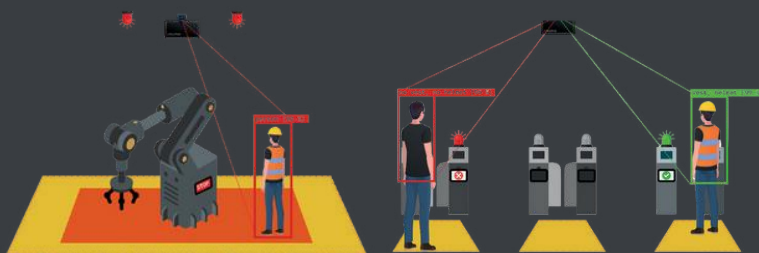
The Safety Light concept is designed to increase safety in industrial, logistics, and warehouse environments e.g., by providing clear visual signals for vehicles, both automated and conventional.

Combined with a PLC box, the system ensures precise management of the safety lights, which can be tailored with a range of standard lenses or fully customized to meet specific requirements. This flexibility ensures optimal visibility and alerts, improving situational awareness, preventing accidents, and ensure smooth and safe operations in busy environments.



Key Benefits

- Does Not Require Floor Preparation
- Easy To Install and Maintain
- Resistant To Overlay or Damage
- 24/7 Operation or Adjustable Timings
- Energy Saving
- Up to 1,000 LUX
- Interactive Features - Blinking or Pulsation To Draw Attention



SPARK Concept

SPARK enhances safety by detecting accidents, preventing incidents, and avoiding dangers. It alerts emergency services and managers in case of accidents, monitors safety protocols like PPE usage and access control, and prevents close proximity to hazardous areas or machinery.

Our Concepts



Discover our diverse and ever-evolving portfolio of innovative concepts.

We continuously develop and refine solutions to support automation processes, bringing everything together under one roof for seamless integration and maximum efficiency.

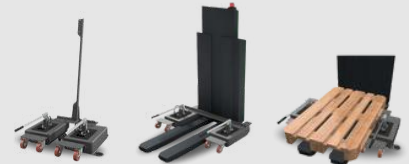
Test Concept

AMRs tested directly at your facility to ensure optimal functionality in your specific environment.



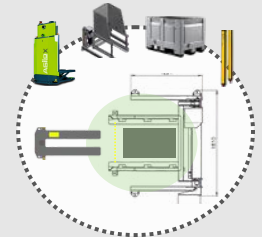
ICOS

In Case of Stop. A mobile hydraulic lift solution designed to quickly address downtime and minimize interruptions.



Automated Waste Handling

Advanced waste handling with Agilox ONE optimizes logistics and enhances safety.



Scanner Portal

Advanced scanning solutions for precise identification and control in operational workflows.



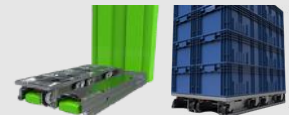
Internal Marketing

Customized AMR wrapping adds a personal and professional touch to your automation fleet.



Adapter Pallet for Dollies

Simultaneous transport of multiple dollies with and AGILOX ONE.



Customized Solutions

Customized solutions are designed to meet the specific challenges and objectives of your business



Aftersales



At SCANLOX, we are with you **every step of the way**, from initial consultation to successful implementation and beyond.

Our team ensures a seamless experience, offering **support and guidance** throughout the entire process.

After the project is finished, we are ready to provide **ongoing assistance**, addressing any needs or challenges that may arise.

Your success is our priority.



Consultancy

Expert advice to help you optimize processes and identify the best automation solutions for your business.



Solutions Development

Custom solution development tailored to meet your unique challenges and improve system efficiency.



Test Concept

The Test Concept allows you to evaluate our advanced robot solutions directly at your facility. Choose from a one-day trial or an extended testing period to assess the robot's performance in your specific environment.



Support

Choose from a range of support packages, from basic assistance to 24/7 support, ensuring your operations run smoothly at all times.



Service

Regular machine maintenance and servicing to keep your AMR or AGV running at peak performance.



Training

We offer three levels of training with ongoing professional development. Available both in-house and on-site for flexibility.



Implementation

Fast and efficient implementation, minimizing disruption while ensuring smooth integration into your operations.



Replacement

Efficient replacement service to quickly resolve issues and maintain uninterrupted operations.