



# Cosmic Transformation

Oracle Deck

By Lindsay Kokoska & Michelle Lewis



# Cosmic Transformation

## Oracle Guidebook

- a divination deck for  
your empowerment journey

Artwork by Lindsay Kokoska, Infinite Mantra  
Written by Michelle Lewis, The Blessings Butterfly



Copyright 2021, 2022 All Rights Reserved

The Cosmic Transformation Oracle -  
a divination deck for your empowerment journey  
Channeled and Written by Michelle Lewis, The Blessings  
Butterfly Channeled Artwork and Design by Lindsay  
Kokoska, Infinite Mantra Copyright 2021, All rights  
reserved.

**Disclaimer:**

This oracle deck and accompanying guidebook are intended for personal use and entertainment purposes only and should not be used as a substitute for medical advice from a licensed medical professional, or to diagnose or treat any medical or mental health conditions. Any use of the information shared in this oracle deck and accompanying guidebook is at the reader's sole discretion, and neither the author nor the artist can be held responsible or liable for any loss, claim, or damage arising out of the use or misuse of any suggestions made therein.

The moral rights of the artist and the author have been asserted. No part of this artwork or the accompanying guidebook may be reproduced either in full or in part by any mechanical, recording, or electronic process, including in the form of photographic recording, nor may it be stored in a retrieval system, transmitted, or otherwise copied for public or private use without the expressed consent and prior written permission of both Michelle Lewis (author) and Lindsay Kokoska (artist).

# Contents

Welcome to The Cosmic Transformation Oracle	1
Suggestions for how to use this deck	2
About the Artist- Lindsay Kokoska	4
About the Author- Michelle Lewis	6
The Cosmic Transformation Oracle	9

## The Deck

Cosmic Transformation	10
Rebirth	12
That I Am	14
In Tune	16
Deep Healing	18
Redefined	20
Genesis	22
Cosmic Portal	24
Pool of Reflection	26

Dimensions	28
Third Eye Rise	30
Clear Intentions	32
The Storm	34
Meant to Be	36
Inner Child	38
Dreaming	40
Empathy	42
The Edge	44
Golden Light	46
Highest Self	48
Wild Feminine	50
Manifesting	52
Twin Flame	54
Power	56
The Universe Within	58
Sacred Vision	60

Resurface	62
Ascension	64
The Thin Veil	66
Positive Vibes	68
Dark Moon Rising	70
Gates of Wisdom	72
Ground & Connect	74
Kundalini Awakening	76
The Mystic Gateway	78
Cosmic Connection	80
Inner Power	82
Deserving	84
Natural Harmony	86
Precious Offering	88
Courage	90
Gratitude	92
Expansion	94

Protection	96
Remembrance	98
Journey	100
Forgiveness	102
Exquisite Beauty	104
Light of Truth	106
Acknowledge the Past	108
Oasis	110
Generous	112
I Am Loved	114
New Summit	116
Innocence	118
Divine Spirit	120



## Welcome to The Cosmic Transformation Oracle

As spiritual beings living in human bodies, we are all connected to the world that we can see, as well as the worlds we cannot. Our continual search for meaning, purpose, and joy in this life is marked by our personal daily transformations as we become ever more enlightened, evolved, and empowered.

This is the path of your Cosmic Transformation.  
Peace & Blessings to you on your Journey.

## **Suggestions for how to use this deck**

Dedicate Your Deck: Bless/Consecrate/Dedicate/Charge your deck before the first use with the intention of releasing the powerful energy, wisdom, truth and guidance that this deck has to offer.

Ask your Higher Self, Spirit Guides, and God /Goddess/ Source to make each message speak clearly to you through each card for your highest good.

## **Divination/Readings:**

Choose a quiet place to settle into where you will not be bothered. Ground yourself with 3 deep, calming breaths, light a candle and ask your Spirit Guides for clarity & understanding. If you are providing a reading to another person, be sure to ask for messages from their guides as well. If you or the person you are reading for has a specific question, ask it. Otherwise, request general guidance.

Lightly tap or rub the deck 3 times, shuffle gently, and when you feel ready select your card/s. Focus on both the image and the written message of each card and how it can support, encourage, or challenge you.

Notice specific feelings or emotions that the card brings forward as these are clues. Unlike with tarot cards, there are no reversed meanings should a card appear upside down, it is simply a nudge from your guides to pay close attention to the message presented.

## **Reversed Cards**

Unlike with tarot cards, there are no reversed meanings in this deck should a card appear upside down. It is simply a nudge from your guides to pay close attention to the message presented. However, we have included added protection messages for each card should it appear upside down in your reading.

## **Single Card Spread:**

Choose a single card for the day, week, month, or year as a guidepost, source of focus, energy channel, answer to your question, or journal/meditation prompt.

## **3 Card Simple Spreads:**

Past/Present/Future; Mind/Body/Spirit;

The Situation/ The Obstacle/The Lesson;

Opportunity /Challenge /Outcome;

What you need to Know/

What you need to Show/What you need to Grow;

What is Blocked/Healing Tool/Potential Outcome.

## **12 Card Futures Spread:**

Choose 12 cards and lay them in a circle. The card at the top of the circle represents January; reveal each card in a clockwise motion, beginning in the month that you are in to represent the energy/focus/lessons of each month of the year.

## Lindsay Kokoska, Artist

Lindsay (Linzy) Kokoska is an Intuitive Artist based in Nova Scotia, Canada, specializing in digital collage.

"As an artist I draw inspiration from all aspects of my life. My exploration and development in my yoga practice, through seeking to link the worldly and the transcendent, and my love of travel and culture have allowed me to further my skills and passion in the world of art.

The art I create is dreamlike, with heavy influences of esoteric, spiritual and mystical connections. When I create art, I am channeling an energy; like a clairvoyant receiving a message, I connect to an energy and it guides me. I love utilizing sacred geometry, astronomy, nature, patterns and shapes to create thought provoking compositions.

I feel that my art manifests the power of intuition. I hope that my work inspires people to go inward, so that they can access a deeper vision, to be reminded of the connections between material and spiritual experiences and see magic in their lives."

All Artwork of Infinite Mantra is created by Intuitive Artist Lindsay Kokoska.

Lindsay can be commissioned for artwork and design collaborations.

To work with Lindsay, please visit her website at [www.infinitemantra.ca](http://www.infinitemantra.ca)

Follow Lindsay on Instagram: @infinite\_mantra



## Michelle Lewis, Author

Michelle Lewis (she/her/they) is the creator & founder of The Blessings Butterfly, a holistic coaching & energy healing practice based in Southern California, USA designed to help people free themselves from shame's grip. She is a writer, speaker, energy witch/healer, mindset coach and author of the Amazon bestselling positive affirmation books, *The Blessings Butterfly* and *The Blessings Butterfly Companion Guide*.

Whether with a pen in hand or a microphone, Michelle relies on the power of words to find clarity, comfort, and healing. Writing poetry, short stories, and award-winning essays since her youth, her simple yet profoundly transformative work has most recently appeared in TED Ed, as well as in various online magazines, summits, and podcasts. She has been a featured speaker at many live events and is a contributing author to the Amazon International Best-Selling book, *Soul Hearted Living*.

Having worked diligently for decades to overcome severe traumatic events, Michelle is passionate about using her gifts and wisdom to bring hope and healing to millions. As an Energy Witch and a Healer, Michelle provides her clients with practical tools and spiritual guidance to support and guide them forward on their sacred journey. "As an Energy Witch and a Healer, I am honored to receive and share powerful, positive messages from the spiritual world to help my clients overcome their challenges and cultivate transformation. I love to work with the tarot and different oracle decks, so co-creating this beautiful deck with Lindsay has been an amazing experience. It is my dearest hope that you will find the messages shared in these cards to be exactly what you need at that moment."

To work with Michelle, please visit her website at [www.theblessingsbutterfly.com](http://www.theblessingsbutterfly.com)

Follow Michelle on TikTok & Instagram: @theblessingsbutterfly









# **Cosmic Transformation**

## **Oracle Deck**





## COSMIC TRANSFORMATION

Every journey has a destination, though it may not be visibly evident or consciously known at the outset. Even when surrounded by darkness, the human Soul knows instinctively that it is on its way to the Light and will continue to evolve ever forward and upward. Just as the caterpillar is encased in a chrysalis of darkness for a short time, it completely transforms within to emerge as a butterfly. Your Transformation began long before your body took this form; trust that your Soul knows the way forward.

### **Reversed Card:**

Dear One, it's okay if you don't yet completely understand what is happening within you and around you. Remember that transformation takes time, and some changes may be appearing to you further down your timeline. It's okay. Keep trusting in your Higher Self to guide you forward.







## REBIRTH

Beautiful One, bathed in Light, the Universe fills every cell of your being with infinite possibilities. Every breath, a new beginning. Think of the waves of the great ocean, like the very lungs of Mother Earth, drawing back into her depths and crashing forward upon her shores in an endless cycle. There is comfort in the rhythm. Inhale, Exhale. At any moment, you can choose a fresh start.

### **Reversed Card:**

Give yourself a little extra time and space around this message as it is presenting itself in your life today. Ground yourself with slow, deep, intentional breaths.







## THAT I AM

Creatrix/Queen. Infinite Knowing. Deep Magick. There is a powerful Goddess Energy of calm, graceful strength present. She is a strong feminine facet of your Higher Self who sees you clearly through the bullshit, the distractions, the fears, the chaos to offer her Beautiful Truth to you: "I Am All That I Am."

### **Reversed Card:**

Dear One, do not shrink in fear from this great power that exists within you. Embrace it. Embody it!









## IN TUNE

On the desert path there comes a point at which you stop wandering aimlessly and drop down to rest. You must connect your body to the earth beneath you and pause to tune in to yourself, your surroundings, and the vastness of the sky above you. Take the time to be dazzled by it all, but do not stay there too long. Your Guides are all around you, urging you to take action that is in alignment with your values.

### **Reversed Card;**

Do not be afraid of the changes you are being called to make. Your Guides are all around you, urging you to take action that is in alignment with your values.







## DEEP HEALING

This card speaks to an ancestral wound that has been carried into the present time and is ready to be healed. This long-held pain is not to be erased or hidden by Shame, but must be brought forward with great care into the Light and covered in Love, Forgiveness, and Truth. Healing is at first messy and may leave a scar behind, but you must remember that there is Beauty in the healing, and your scars do not need to be passed along.

### **Reversed Card:**

You are engaging in very deep work that stretches far into your past, and ripples forever forward into your future. Take great care of your mind, heart, and body.







## REDEFINED

She makes up her own mind and lives by her own rules. She is not bound by anyone's definition of who she is, or who she should be. "I will decide," She says- and so it is. Call upon Her clear, calm energy when you need to make a stand for yourself, your ideas, your voice. Lean into Her confident power to defy anyone else's definition of who you are or who you should be; Who You Are is yours and yours alone to decide.

### **Reversed Card:**

Provide extra support to your throat chakra (Vishuddha) with these affirmations: I am open, clear, and honest in my communication. I have a right to speak my truth. I communicate with ease. I am grateful and express my gratitude.







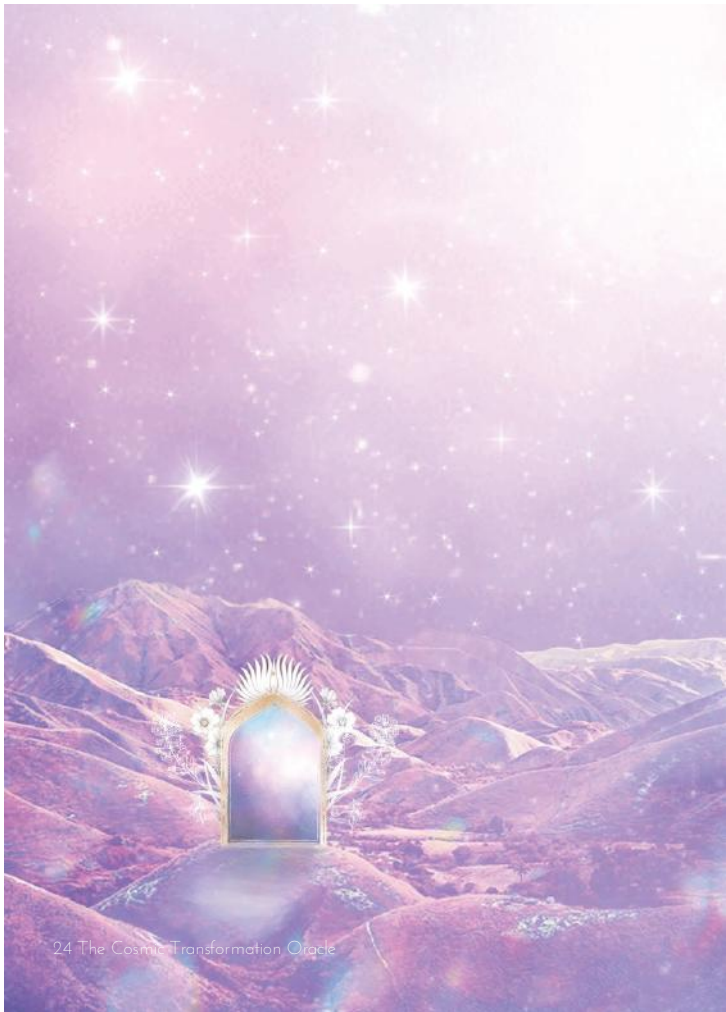
## GENESIS

Return your attention to the origin, the point of inception, conception, generation. An energy of Love, of Creation, of Hopefulness. It is an energy of both intense Light & Heat surrounded by Tranquil Cool. What do you want to make new? What do you want to bring forward? What are you creating? Like ripples on a pond, what you do next will reverberate outward far beyond where you are right now.

### **Reversed Card:**

Strengthen & support your root chakra (Muladhara) with these affirmations: I am centered and grounded. I am powerful, rooted, and strong. I am stable, safe, and secure.









## COSMIC PORTAL

A portal stands open before you, inviting you to step through to connect with the spiritual realm and be one within its mysteries. All wisdom is available to you. All guides are available to you. All enlightenment is available to you. Nothing is required of you, but for you to enter this sacred space willingly. This is the time for you to be open to higher understanding.

### **Reversed Card:**

Open your crown chakra (Sahasrana) for spiritual connection and enlightenment with these affirmations: I am Divine Energy. I am connected to all beings spiritually. I am infinite and boundless.







## POOL OF REFLECTION

This card is an invitation to pause and reflect on your current circumstances and how you are presenting yourself. Are you sharing your true image, or are you wearing a mask? Are you allowing yourself to be seen in your full glory? Are you seeing those around you for who they truly are, or are you being dazzled by their masks?

### **Reversed Card:**

Strengthen & support your solar plexus chakra (Manipura) with these affirmations: I am confident and courageous. I am motivated and purposeful. I am in control of myself and use my power in positive ways.







## DIMENSIONS

This card is calling you to look beyond the surface, as there is more than just the first things you see. Observe the situation with all of your senses: sight, sound, smell, taste, touch, and intuition. All are necessary to gain a clearer understanding. Trust that each dimension you explore is providing you with important information to aid you in your decision.

### **Reversed Card:**

Strengthen & support your third eye chakra (Ajna) with these affirmations: I discern which thoughts are true and helpful to me. I let my inner wisdom guide me. I can trust my intuition.





30 The Cosmic Transformation Oracle



## THIRD EYE RISE

Tune in to the wisdom that goes beyond your mind, and connect to the wisdom of the universe. The energy of the Third Eye allows you to see beyond what's visible, linear, logical. It is the portal to mysteries not bound by time or space, and its truths are revealed to you through tapping into your own intuition.

### **Reversed Card:**

Strengthen & support your third eye chakra (Ajna) with these affirmations: I discern which thoughts are true and helpful to me. I let my inner wisdom guide me. I can trust my intuition.









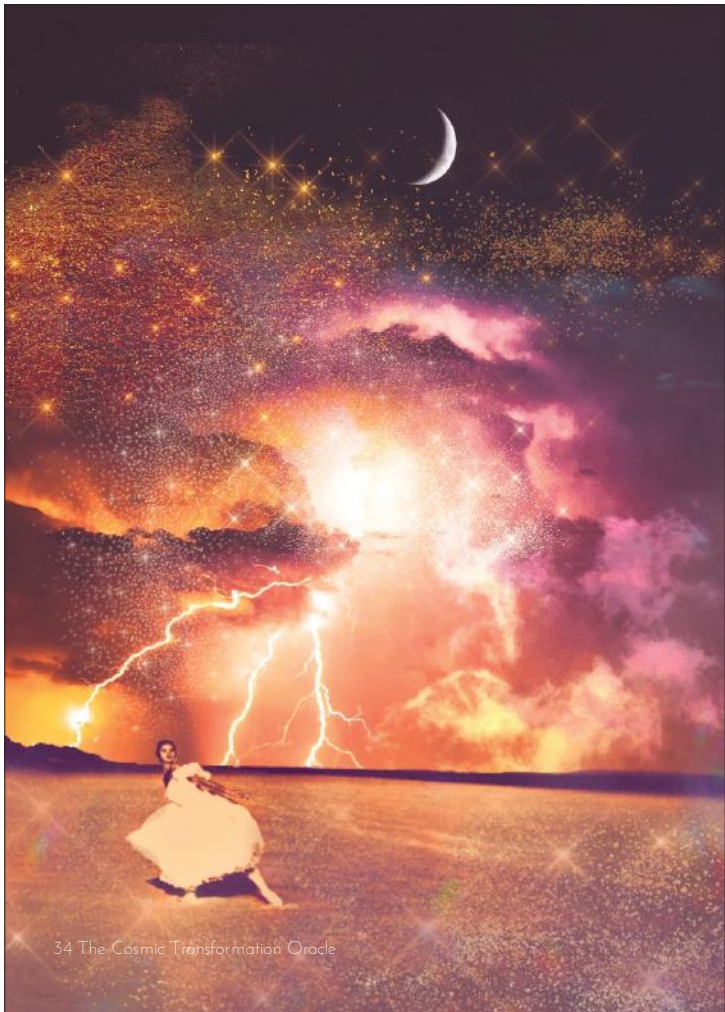
## CLEAR INTENTIONS

Your intentions matter as much as your actions do. Do not hide your message behind pretty distractions, half-truths, or deceit. Say what you mean clearly and without confusion. Be mindful and aware of those whose actions do not match their words. Be a person whose intentions are clear. When you are setting intentions, do not be vague but be crystal clear.

### **Reversed Card:**

Provide extra support to your throat chakra (Vishuddha) with these affirmations: I am open, clear, and honest in my communication. I have a right to speak my truth. I communicate with ease. I am grateful and express my gratitude.







## THE STORM

Storms can feel scary, overwhelming, and unsettling as they disrupt the status quo. Trust that the storm you may be facing whether it is physical, spiritual, or emotional may shake you up temporarily but it will not overtake you. You may not always be able to stop or prevent a storm's arrival in your life, so allow this energy to help you clear away whatever needs to be removed and leave you thoroughly cleansed.

Storms can also represent feelings of anger that have been suppressed; give yourself a safe & productive way to express your anger or it will turn against you. If you are in the midst of a personal storm, take courage Dear One, do not fear. Prepare yourself for what is to come by grounding and anchoring into what you know is True.

### **Reversed Card:**

Strengthen & support your root chakra (Muladhara) with these affirmations: I am centered and grounded. I am powerful, rooted, and strong. I am stable, safe, and secure.







## MEANT TO BE

Fate is something that is often met with Fear or Resignation, but this need not be so. What if you could look at the current unfolding as a bump and turn in the road, rather than the Final Destination? Cause & Effect, Action & Reaction, Call & Response, Outcome & Acceptance. Some things are simply meant to be. In shifting your perspective, you may open up many new possibilities, some of which you can have an influence in and others which are beyond your current capacity to change.

### **Reversed Card:**

Practice Patience- this is not something that can be forced. Look for the magical connections around you, they are there to assist and support you.







## INNER CHILD

Step by step each day of your life and on into eternity, your Inner Child walks with you. They carry your memories, your hopes and fears, your laughter and your pain. They sometimes speak up loudly to get your attention, reminding you that They are You and that Love, Kindness, Caring, Safety, Security, and Play are still needed. They are there to remind you that you can now Parent yourself in all of the ways that you didn't receive as a child. They are there to remind you of the goodness and innocence that still exists.

### **Reversed Card:**

Embrace Playfulness, Curiosity, Creativity, and Learning. Give yourself opportunities to explore more playtime and imagination.









## DREAMING

Take a closer look at what's happening in your dreamstate. The images, the landscapes, the sensations, and the feelings that are represented each contain a message from your subconscious self that is relevant to your conscious self. Try to recall what your dreams may be telling you like upon waking, even if the details are fuzzy. Focus on the feelings that are evoked as this reveals important clues about any blocks that you have hidden away. Once you have uncovered them, you can begin to process and heal or release them.

### **Reversed Card:**

If you are struggling to recall your dreams after you wake up, ask your spirit guides to place signs in front of you throughout the day. Trust your inner knowing as these visual, audio, or other sensory cues appear, as they are not "coincidences" but they are synchronicities.







## EMPATHY

We are mirrors of one another, revealing both the things we love & admire as well as the things that are unpleasant & make us uncomfortable. We are drawn to the people who reflect the things in us that we want to nurture, and also the things that we want to change. Be careful, Dear Empathy, about taking on the emotions that don't belong to you. What are you seeing that you want to develop and set free in yourself? What are you seeing that you want to harness and transform in yourself?

### Reversed Card:

It is OK to feel deeply and not take immediate actions. You can have empathy and compassion for someone without rushing in to solve their problems. Sometimes all that is needed from you is to witness and hold space for them.







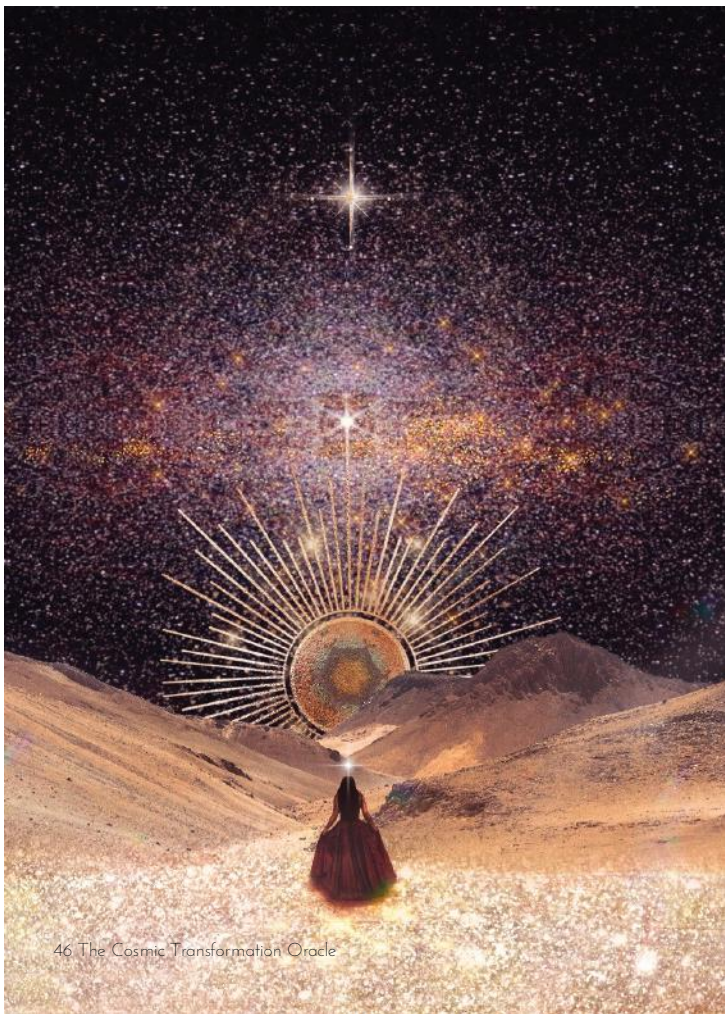
## THE EDGE

Deep Breath. You are standing at The Edge, facing a vast expanse of opportunity, change, risk, adventure, possibility- and you know that you have been in this place before. The familiar energy is intoxicating, electrifying, and so inviting as you take it all in and allow it to fill you. You are not intimidated by what lies ahead of you. You feel supported by the same Presence that calms the oceans and covers the earth in a blanket of infinite stars. You can come back to the energy of The Edge whenever you need to gather up your inner strength.

### **Reversed Card:**

Pause and Observe. Supportive affirmations here include: I am surrounded and supported by magickal energy. This is a risk I am willing to take.







## **GOLDEN LIGHT**

Nyx, Goddess of the Night- it is Her energy that comes forward here. Golden Stardust fills her eyes, her gaze piercing through the surrounding darkness to light the way. She acknowledges the night without fear and takes comfort in the quiet, because she knows that it is only in the darkest times that even her faintest glow can be seen. Star Child, this card is calling you to face the darkness and embrace the Golden Light within so that you can truly Shine.

### **Reversed Card:**

Dear One, do not be afraid to be seen. Your words, thoughts, ideas, and passions have tremendous value, you have only to bring them forward and into the Light!









## HIGHEST SELF

Peer through the mist into the life that you are creating for yourself and see through your Third Eye a vision of the next version of You. Feel a tingling level of freedom that is beyond where you are now. Bathe in the sense of unbound Joy at what your future holds in store for you. Inhale the deep, holy calm of being totally aligned with your Highest Self, unstoppable in embodying your full potential.

### Reversed Card:

Support your third eye chakra (Ajna) and your crown chakra (Sahasrana) with these affirmations: I trust my intuition. I let my inner wisdom guide me. I discern which thoughts are true and helpful. I am spiritually connected to all beings. I am Divine Energy. I am infinite and boundless.







## WILD FEMININE

When the Wild Feminine calls, you feel the timbre of her voice resonating in your bones. Her energy is unapologetic, bold. She is fearless with her magick, and she holds the keys both to new life and to sustained growth. She is nurturing, strong. She invites you to step into the natural flow of this season, pouring your energy into nourishing the seeds and saplings you have already planted.

### Reversed Card:

Address any mother-wounds you may be holding and offer healing prayers to female ancestors in your family of origin. Embody the Goddess Energy as you understand it. Supportive affirmations for your sacral chakra (Svadhithana) include: I embrace pleasure in abundance. Life flows through me sweetly and joyfully. I am free and safe to explore my sexual self. I will not be shamed.







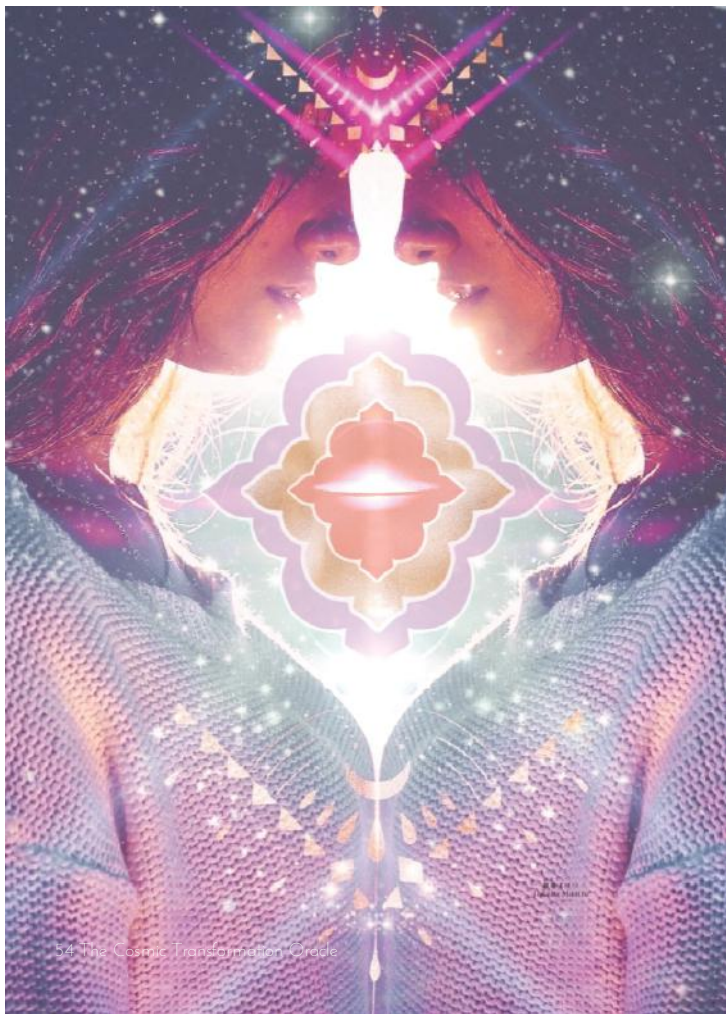
## MANIFESTING

The first step in manifesting what you want in your life is to hold a vision of it. Looking heavenward out into the Great Creation, allow yourself to be awestruck by the infinity above and all around you. Imagine yourself with the power to create each and every one of these bright celestial Lights. Allow yourself to be fed by their energy and beauty. Transcend the time and space that is held between you and speak into existence the vision you wish to manifest for yourself. My Love, you are Worthy of this!

### **Reversed Card:**

Don't stop believing in yourself! If things feel stuck, make some adjustments. Positive affirmations to support your ability to manifest your desires include: I am worthy and deserving of all good things. I am allowed to want what want. I am open to receiving what I want. I am working to remove any and all blocks to my success.







## TWIN FLAME

Look no further than into the mirror, Beautiful One, to find your true Twin Flame. It is You. You carry within the Source of all the Love you truly need. Though you will find companions who match you on a soul-level, no other human can complete you or fulfill you; they can only ever match the Love that you already hold for yourself. Cultivate deep compassion and caring for yourself, inside and out.

### **Reversed Card:**

Do not neglect your self-care today. Your closest relationships can benefit from some extra attention and reassurance today as well.











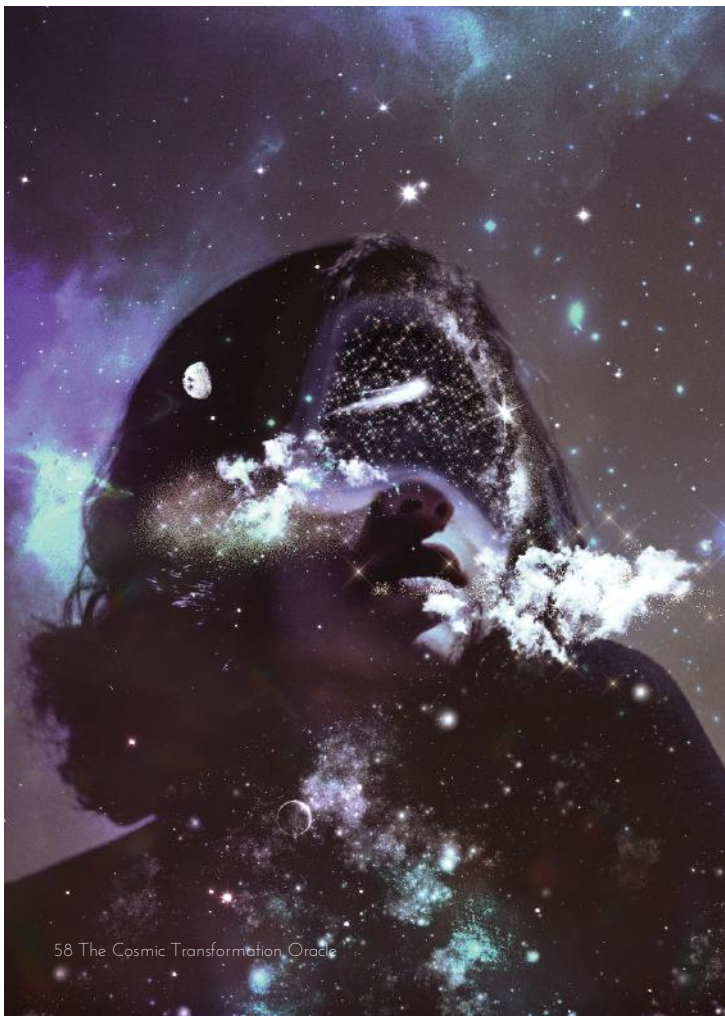
## POWER

Through every phase, seen and unseen, my influence is felt. Unadorned and untamed by the cloth of human desire, my power exudes Light and Shadow, Push and Pull, Advance and Retreat, Growth and Rest. I am Moon. I am Ocean. I am sun-filled Day and star-studded Night. I am Femininity, I am Masculinity, I am God, I am Goddess, I am Power. I am We, I am They, I am unbound and calling on you now to flow fully into expressing your own Power.

### Reversed Card:

Where is your power being suppressed? Form an alliance with people whose strength you admire and who can help you to step more fully into your Power. Positive affirmations to support your solar plexus chakra (Manipura) include: I am confident and courageous. I am motivated and purposeful. I am in control of myself. I use my power in positive ways.







## THE UNIVERSE WITHIN

How can one single body contain so much? And yet, here you are, holding the entirety of Time and Space and Life and Thought and Energy and Spirit and All Things within your very soul. The essence of everything is within you, and you are a reflection of everything that you see, feel, and sense. This card is asking you to contemplate your experience of this life and open your awareness to this present moment. What are you holding inside of you that is waiting to be shared?

### **Reversed Card:**

Dear One, do not be afraid to think bigger. Challenge yourself to expand your perspective and increase your capacity.







## SACRED VISION

You carry a Sacred Vision, one that has been deeply held and blessed and previously carried by many generations before you. The burden of it is both Beautiful and Holy. It is ever-present, and within your reach. You are being called to take every necessary step forward to carry your Sacred Vision through to fruition.

### **Reversed Card:**

Do you need more clarity around your Sacred Vision? Spend time opening your crown chakra (Sahasrana) by visualizing violet light covering the top of your head and reaching into the heavens. Positive affirmations to support spiritual connection and enlightenment include: I am Divine Energy. I am spiritually connected to all beings. I am infinite and boundless.







## RESURFACE

You have been submerged into Self for a while, diving deep into your shadow-space, revealing both the aching muck and the hidden treasures at the bottom of your personal ocean. Now is the time for you to burst back to resurface, exhilarated and refreshed, an ecstatic sense of clarity now filling your heart and breath. Where once you could only feel darkness, now you are surrounded by a thousand welcoming lights to guide you forward.

### **Reversed Card:**

What have you discovered in your time of introspection? What are you learning about yourself and your depth of being? It is safe for you to connect with others, though you will likely find that you have little tolerance for shallow conversations anymore. Seek out the people who are capable of meeting you at the surface and are willing & able to go deeper.









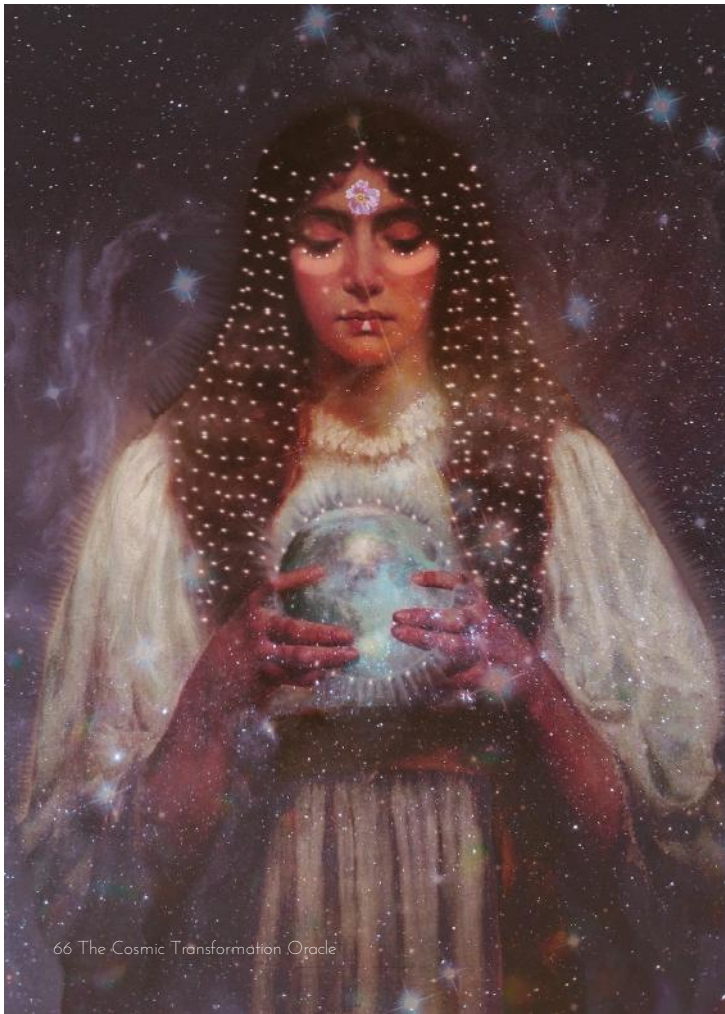
## ASCENSION

Enthroned at last. You have ascended to a place of leadership, authority, and respect. This is your Higher Self reminding you that you absolutely deserve to be in this position of power, and that your transformation is marked by your grace, benevolence, and confidence. You have earned your place as someone who will be looked to for wisdom; you must trust in all the life lessons that have brought you here.

### **Reversed Card:**

Address any self-doubts that are coming to the surface. It is time for you to rewrite any old scripts or stories that would seek to hold you down or keep you feeling small & powerless.







## THE THIN VEIL

There are certain times throughout the year when the veil between the land of the living and the realms of the dead is very thin. It is during these times when our dearly departed loved ones may be more easily heard, their presence felt, or visions of them shown to us in a state between waking and dreaming. The souls of your spirit guides are always near to you, holding you in tenderness and caring, offering their guidance and love. Call upon them now.

### **Reversed Card:**

There is a network of caring that surrounds and supports you. Someone is here with you right now, a loved one who has moved into the spirit realm and who wants to comfort you. They have been witnessing your pain, longing, and struggle, and they send you the message that you are not alone. Call on their Love to strengthen you.







## POSITIVE VIBES

You don't have to ignore the darkness in and around you to also see what is light, bright, and hopeful. Negativity and Positivity are always coexisting, and you are more than capable of carrying both at the same time. Give as much energy to creating and holding a positive vision for yourself as you do to holding space for the challenges you've encountered. Remember, you are a spirit-being experiencing a human journey. Expand beyond the binary way of thinking and ride the Positive Vibes that the Universe has laid out in front of you.

### **Reversed Card:**

Give yourself extra space for meditation and spiritual connection. Nurture your hopeful, positive vision for yourself and for the future that your journey holds.





70 The Cosmic Transformation Oracle



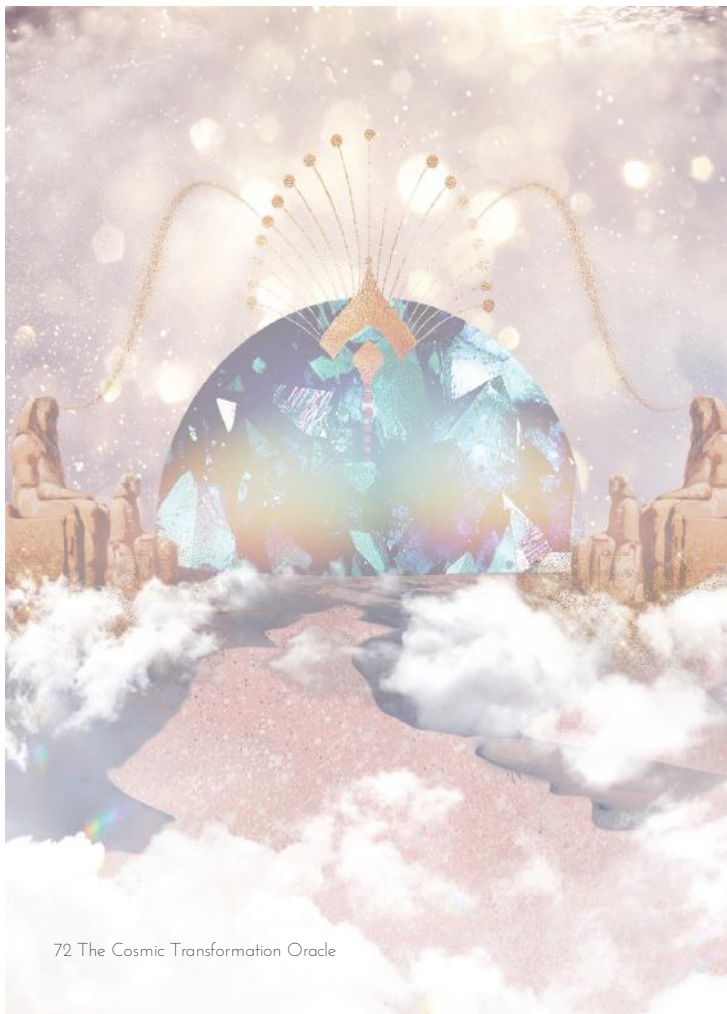
## DARK MOON RISING

This is the start of something New. With the silent energy of a Dark Moon, do not be afraid to dive deep into your feelings and swim in the cool depths of your emotions. Do not forget the lessons you learned in your hidden places, you must bring that Truth and Wisdom forward with you.

### **Reversed Card:**

Return to your foundational, most supportive practices. Keep your body clear of toxic/addictive substances and untangle your mind from distorted thoughts.









## GATES OF WISDOM

Remember, Love- you are always connected to the Source of all energy and wisdom. If the answers you are seeking do not come to the front of your mind immediately, do not be discouraged. Meditate on the Gates of Wisdom: Allow yourself to visualize how each possible path ahead will unfold for you. Notice the sensations in your body when you mentally pass through each gate until you arrive at the place and possibility that feels most clear & calming.

### **Reversed Card:**

Pause here to offer gratitude and ask for additional clarity. There is no need to rush the process.







## GROUND & CONNECT

When you feel pulled in many seemingly different directions, it is a calling for you to Ground & Connect. Plant yourself firmly like the mountain rock, but softly like the gentle sands of time. Allow yourself to pause for as long as is necessary for you. Allow yourself to dance quietly with the different energies that are calling for your attention, not giving yourself over to any one of them but simply allowing each one to reflect back to you and share their humble messages. Breathe, and wait.

### **Reversed Card:**

If it feels like you are overwhelmed with the choices in front of you, give yourself additional time to sit with them until your head-space feels calm and clear again. Support your root chakra (Muladhara) with these affirmations: I am centered and grounded. I am powerful, rooted, and strong. I am stable and secure. I am safe.







## KUNDALINI AWAKENING

It's time to make some big changes. Your soul chose your body to come into this life for a reason, not to simply exist, be distracted, or sleepwalk through life. You are being shaken awake from the inside out as your Divine Feminine energy has grown restless in waiting for you to become aware of who you really are.

### **Reversed Card:**

Do not be afraid of displaying the goddess-power you hold within your soul. Some may be intimidated by your confidence, your voice, your presence and that is okay. Shed any attachment to the fear of being fully seen as who you are.







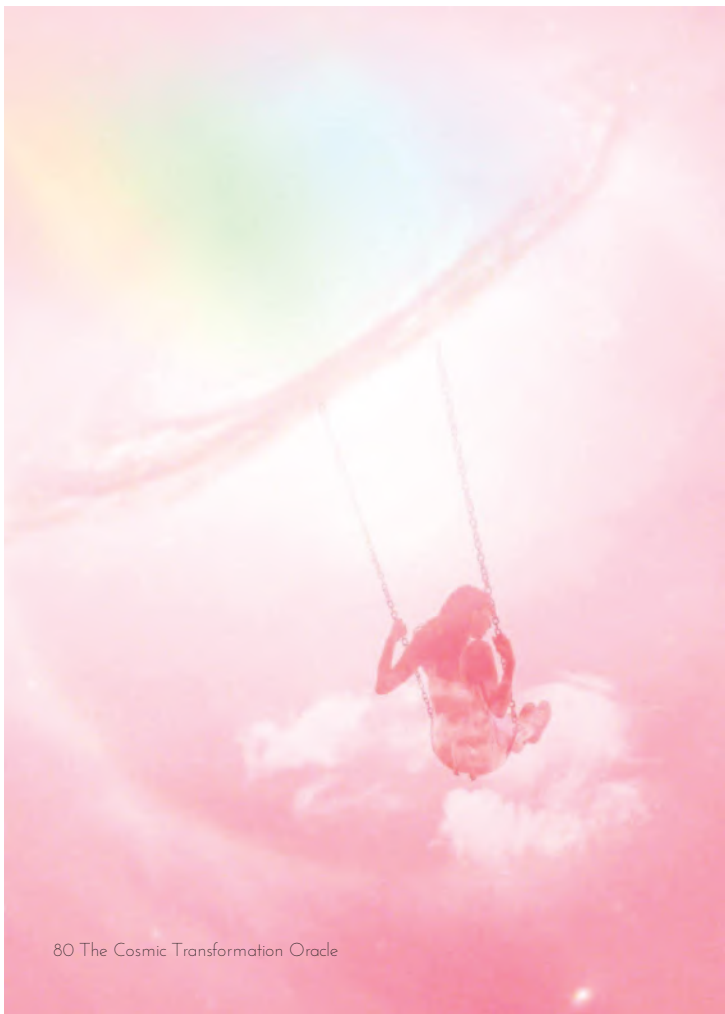
## THE MYSTIC GATEWAY

This gateway is signifying the alignment of opposite, yet complimentary, energies- a time to recognize and reconcile the contradictions within us. We call into the Light all the hidden sides of our nature and dare to see ourselves wholly & truthfully. Shine and Shadow, Water and Earth, Waking and Dreaming, Deeply Asleep and Fully Conscious, Soft Pastels and Shades of Grey. With our soul-wings outstretched, we balance our full weight on an invisible breeze to move mind & body over an infinite path of possibilities.

### **Reversed Card:**

You are entering a period of reconciliation and transformation. There is a new soul being birthed that you are deeply connected to. A new dimension of your deepest self is also coming forward.









## COSMIC CONNECTION

Starseed, think Bigger. Your very bones hold the dust of stars, their light a faint whisper echoing inside of your soul like so much magic that cannot be contained by time and space. Let your energy and presence stretch far beyond your physical body; let your dreams expand to fill the galaxy and beyond.

### **Reversed Card:**

You are receiving divine downloads and opening a channel of higher communication. There is healing energy being offered to you, and through you. Support your crown chakra (Sahasrana) by visualizing violet light covering the top of your head and reaching into the heavens. Positive affirmations include: I am Divine Energy. I am spiritually connected to all beings. I am infinite and boundless.







## INNER POWER

You are so much stronger than you realize. Your words are magic spells; your thoughts, blueprints. You can shape and design the scenes of your life, you can write and rewrite the story of you. Draw on your Inner Power to move yourself in the direction of success, happiness, and fulfillment on your terms.

### **Reversed Card:**

Cultivate and protect your inner power by setting and holding strong boundaries for yourself.







## DESERVING

You are Worthy and Deserving of Good Things. You do not need to do anything, change anything, or fix anything to be deemed Worthy. It does not matter who in your past has told you differently. It doesn't matter who can or can't recognize your worth or truly see you as deserving, you must see it in yourself. It is time for you to shine beyond your shades of grey and show off your true colors.

### **Reversed Card:**

Support your solar plexus chakra (Manipura) to enhance your sense of purpose, self-esteem, and personal empowerment. Affirmations include: I am confident and courageous. I am worthy and deserving of good things. I use my power in positive ways.







## NATURAL HARMONY

Connect deeply with Nature to return to a state of harmony internally and externally. Align yourself with the natural cycles of the seasons, of Day and Night, of Rest and Waking, of Life and Death. While you are awake, discover the patterns within all things that exist to sustain and support their well-being and their purpose. While you are at rest, give yourself over to the natural healing that comes from a deep, dreamy sleep.

### **Reversed Card:**

Dedicate additional time for being outside in a natural setting. Make this an ongoing, regular practice to assist you in recharging your energy and maintaining a healthy connection to Nature.









## PRECIOUS OFFERING

What is the most precious gift that you can offer? Is it your Word, your Energy? Is it your Service, your Passion? When it feels as though the goals that you are focused on are too far out of reach, take a deep breath and remember that your true and most precious offering is a gift of Love, given freely with a humble heart and an open hand.

### **Reversed Card:**

Hold, if possible, a cherished item from an ancestor and connect with the energy attached to it. Remember to be intentional about the legacy that you are creating. This is your precious offering!







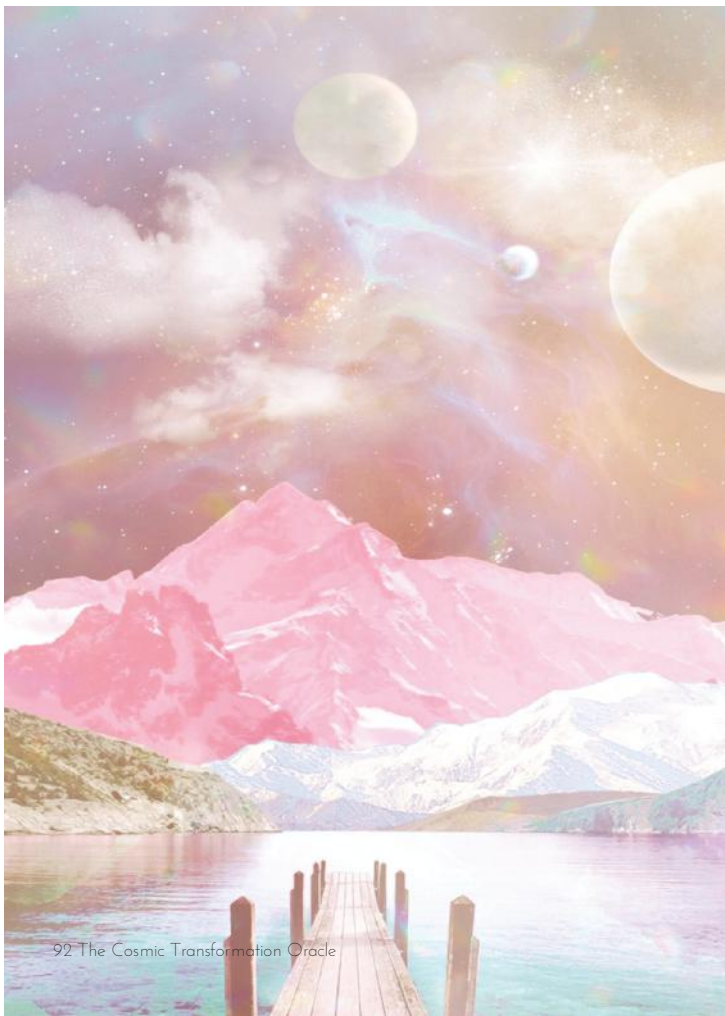
## COURAGE

I am Courageous. I am not afraid to feel fear, because Fear does not own me. I will face my fears, one at a time, and conquer each and every one of them. I do not back down from the things that are challenging to me.

### **Reversed Card:**

Draw on the courage of all you have already conquered, overcome, and survived that brought you to this point in your life's journey. Invoke the boldness of the Goddess for the next challenge before you.







## GRATITUDE

What are you most grateful for right now? What feels most refreshing to your soul today? Consider all the good things that exist in your life every day. Pause to think of every good thing that you have ever experienced until you are overwhelmed with Gratitude and overflowing with its beautiful, positive energy.

### **Reversed Card:**

Support your heart chakra (Anahata) to open all the love, compassion, empathy and forgiveness you hold within you. Affirmations include: I welcome Love with an open heart. I release and let go of resentments with ease. I naturally attract healthy Love and kindness from others. I receive all that I want and all that I need.







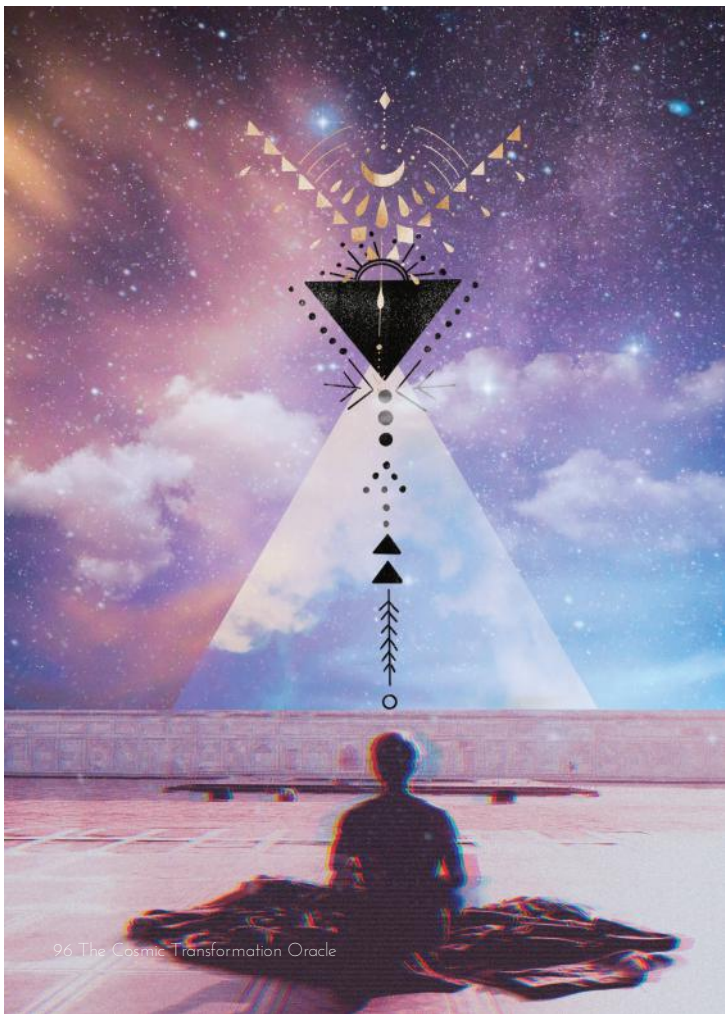
## EXPANSION

Give yourself all the space to Expand. Fully, beautifully, and unapologetically fill up each and every new space you inhabit. Stretch yourself beyond your old limiting beliefs until you can breathe new life into every cell of your being. Open your mind to entertain a bigger, brighter, more expansive vision for your life physically, mentally, emotionally, and spiritually.

### **Reversed Card:**

Start from the place where you are. Offer gratitude for all that you have, and then express a willingness to welcome in more of what you want, need, and desire. Affirmations include: I am allowed to grow and expand. I am opening my capacity to receive. I am ready to experience my fullest and highest self.









## PROTECTION

No matter what, no matter where, and no matter when- your soul & spirit are always divinely protected. Nothing can ever separate your soul, your spirit, your innermost being from the eternal, unending energy that sustains you. Remind yourself that right now, in this present moment, you are Safe & Secure. You are Protected.

### **Reversed Card:**

Support your root chakra (Muladhara) for a greater sense of stability, safety, security and groundedness. Affirmations include: I am safe now. I am stable and secure now. I am rooted, powerful, and strong now.







## REMEMBRANCE

Every day is an opportunity to experience something meaningful, exciting, and fun. Create special moments for yourself and for the people you care about the most. Recreate your daydreams into the most Magical memories that you will enjoy looking back on and retelling their stories at your gatherings for years to come. Sometimes the sweetest Remembrance comes back as a fleeting glimpse of a long-forgotten, hauntingly beautiful moment in time.

### **Reversed Card:**

Take some time to recall a favorite happy memory. Allow yourself to feel the fullest expression of joy that it brings forward. Notice any colors, sounds, or scents that help to support your happiest memories.







## JOURNEY

At each stage of our life's journey, we can choose to be in community with those who are moving in the same direction as we are, whether they are ahead of us, behind us, or beside us. The communities we connect with can serve to provide a sense of adventure, belonging, safety, normalcy, education, support, inspiration, camaraderie, entertainment, joy, healing, purpose, personal growth & positive transformation. You alone must make the journey that is your soul's path, you don't have to embark on it alone.

### **Reversed Card:**

Check in with yourself and ask: Where am I currently on my journey? Then, ask Spirit to bring you the community that you need the most right now- A Mentor, A Partner, and A Student.







## FORGIVENESS

Forgiveness does not make up excuses. Forgiveness does not harbor grudges. In forgiving you, I am choosing to release the pain you have placed inside of me. In forgiving myself, I am allowing myself to heal and move forward with grace and mercy. When we practice the magic of Forgiveness, we create a healing spell that sets a part of ourselves free.

### Reversed Card:

If you are struggling to offer or to accept forgiveness, it may be time for you to ask Spirit for help. You might also practice a version of the Metta Meditation: May we all live in safety. May we all be free from fear. May we all have mental happiness. May we all have physical health. May we all live with ease. May we all be free from worry. May we all be free from strife. May we all live with joy.









## EXQUISITE BEAUTY

There is Exquisite Beauty in the natural world. There is Exquisite Beauty in the human-made world. Life in all of its magnificent diversity has offered us more beauty than we can observe in one lifetime. The universe and all that is within it, so vast and far beyond our limited comprehension, has offered us more beauty than we can observe in a thousand lifetimes. Don't miss the blessing of seeing the beauty all around you and appreciating it, acknowledging it, and connecting to it ever so briefly. It is Exquisite, and so are you.

### **Reversed Card:**

Release yourself from the need to conform to any outdated, oppressive, or unhealthy beauty standards that have been imposed on you. Recognize that True Beauty defies conventional thought and far surpasses anyone's narrow and limited ideas of beauty.







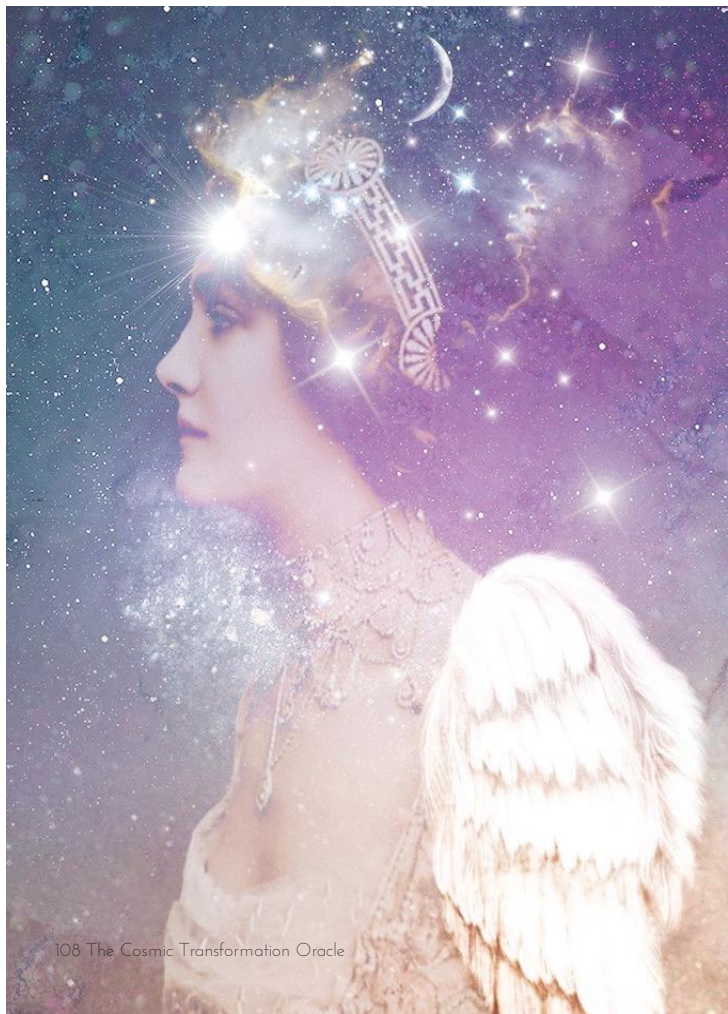
## LIGHT OF TRUTH

Just as the Full Moon in the dark night sky reflects the Light of the Sun, so too your mind must reflect the Light of Truth when you are under the influence of Mystery. After a time of digging into what you hold hidden inside, you are free now to uncover what is in the shadows and let it be bathed in soft, healing Light. Personal Growth & Abundance are the natural outpouring when you nurture yourself deeply in the Light of Truth.

### **Reversed Card:**

A secret you have been holding onto can finally be shared. Find a trustworthy confidante or a confession professional to hold space for you so you can share your truth.







## ACKNOWLEDGE THE PAST

Looking back on your life is important for helping you to identify behavior patterns, connect events, and recognize growth, progress, and accomplishments. It can allow you to bring forward past versions of yourself, and it can also be a powerful tool for releasing guilt, shame, anger, grudges, sadness, or fear. Sometimes we need to look back even further than our current lifetime and seek guidance from the people who lived here before us, whether that is our direct lineage or from the cultures we descended from.

### **Reversed Card:**

Connect today with your angels and spirit guides. A messenger from your past is trying to contact you. Positive affirmations to help support your crown chakra (Sahasrana) include: I am spiritually connected to all beings. I am Divine Energy. I am infinite and boundless.







## OASIS

Before you is an invitation to enter a place of sacred solitude. Pass through the Desert Gate to an oasis of cool, quietly powerful energy that holds the white-hot light of Truth in its very center. Coming into this space requires trust, faith, and the courage to face whatever is kept deep inside of your heart. Know that when you enter this sacred space, you are also freeing yourself to change the landscape from barren to flourishing.

### **Reversed Card:**

Take some time today to offer additional support to your solar plexus chakra (Manipura) and heart chakra (Anahata). Positive affirmations for this include: I am confident and courageous. I am motivated and purposeful. I release and let go of resentments with ease. I welcome Love with an open heart.











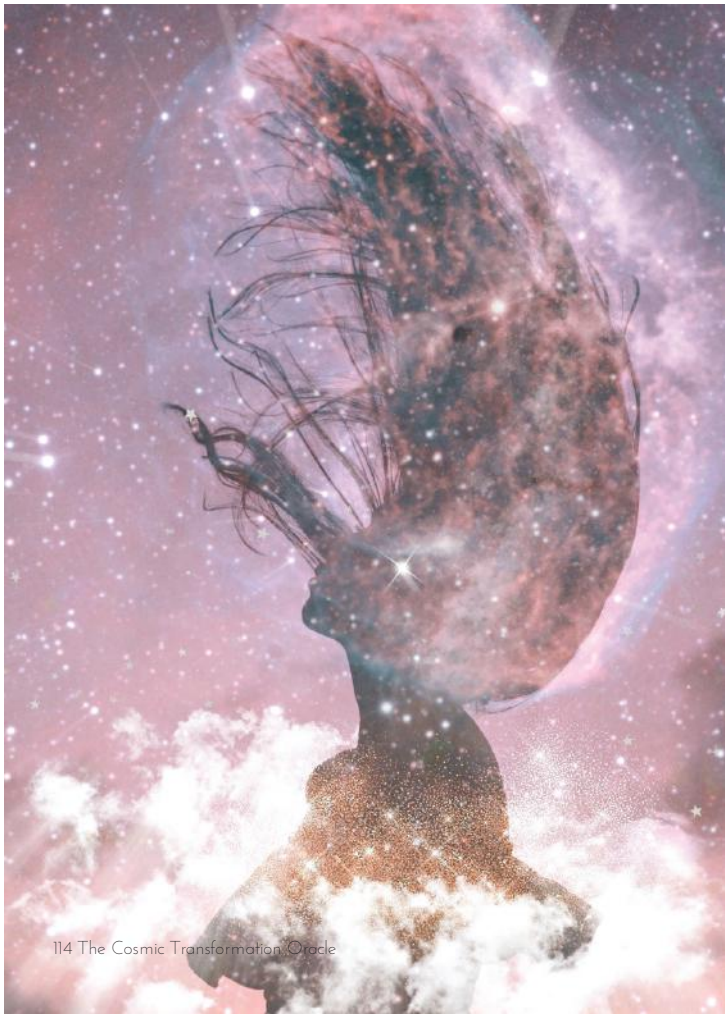
## GENEROUS

I am Generous. I am surrounded by the lush abundance of Eden. I do not need to hide my shadowy parts, no part of me is unwelcome here. I can be generous with my time, my talents, my resources, my gifts, my love, and my praise. I do not hold back my generosity and in return welcome an overflowing of abundance. I have more than enough to serve my desires and fulfill all of my needs.

### Reversed Card:

You need to be generous with yourself, but if you are continuously struggling with debt, lack of resources, or believing that you will never have enough, it may be time for you to work on your money mindset AND begin integrating some healthy budgeting strategies.







## I AM LOVED

This is the mantra for your heart today: I am loved, deeply and completely, exactly as I Am. Right here, right now, there is nothing that I need to do in order to earn Love. I Am Healing, Transforming Love. I Am Love, and I Create Love. This Love flows through my heart and fills in any broken or empty places, shining through with a brilliant light.

### Reversed Card:

Positive affirmations to help support your heart chakra (Anahata) include: I welcome Love with an open heart. I naturally attract healthy Love and kindness from others. I am loving and compassionate to all beings.







## NEW SUMMIT

When you have passed through the lull and recovery time of a plateau, it is time once again to set your sights on the next level up. Look far in front of where you are now and refocus on your higher goals. Whether you climb slowly and steadily, or whether you rise and soar quickly does not matter so long as you are making progress to reach your next new summit.

### **Reversed Card:**

Love, it is important for you to pause and recognize just how far you have come. It is okay for you to spend time appreciating your accomplishments before setting your next goal.







## INNOCENCE

In our Pure State, we are at our most Innocent. We are uninterested in inflicting harm on ourselves or others. We remember only goodness, kindness, openness, gentleness, and peacefulness. Though there are many factors in our adult life that may try to cloud our better judgment, we carry within us this Innocence and can access this unpolluted part of ourselves at any time.

### **Reversed Card:**

Spend some time today in meditation to reacquaint yourself with your Pure State of Innocence. Some positive affirmations to support your root chakra (Muladhara) include: I am safe. I am stable and secure. I am centered and grounded.









## DIVINE SPIRIT

Connect with the Divine Spirit that exists within all things, across all time and space. See, feel, and embrace the holiness that exists within all beings. It is a journey that is physical, mental, emotional, and spiritual. You cannot ignore any of these components. Surrender to the process so that you may transform your old stories and embody the Divine Spirit that you truly are.

### Reversed Card:

Dear One, just as the caterpillar must first go within the cocoon before her metamorphosis into a butterfly can begin, so too must you go within yourself to complete your transformation. Trust that you are not alone in this, and that your Higher Self is already waiting to help guide you.



The image features a central golden circle with a textured, metallic appearance. This circle is surrounded by a complex, symmetrical mandala of colorful butterflies in shades of orange, yellow, blue, and purple. Two crescent moons are positioned above and below the central circle. The entire composition is set against a dark, starry night sky background.

**You Are Worthy  
&  
Deeply Loved**