

Morrill Public Library  
**PROGRAMS  
& SERVICES**



**WINTER 2025**

January & February



**JANUARY 1 -  
FEBRUARY 28, 2025**

**LIBRARY HOURS**

**MON-THU** 9 AM - 8 PM  
**FRI** 9 AM - 5 PM  
**SAT** 10 AM - 4 PM  
**SUN** 1 PM - 4 PM  
**(CLOSED ON SUNDAYS IN JANUARY)**

morrill@hiawathalibrary.org  
785-742-3831



**SAY "CHEESE!"**  
Our free public library programs may be photographed and/or recorded for library promotional use in print, on our website, and on social media. Please let library staff know if you want or need to opt out.

**Library Board of Trustees**

**Karen Searight**, President  
**Chris Diller**, Vice-President  
**Macheala Siebenmorgan**,  
Treasurer  
**Ashlyn Riley**, Secretary  
Jim Ewing  
Leland Hansen  
Carrie Potter  
Erin Verbick, Director



All are welcome.

**Mission Statement**  
The Morrill Public Library is a center for lifelong learning, providing a variety of resources to meet the community's information, education, and recreation needs.

**Friends of the Library Board**

**Jane Bebermeyer**, President  
**Greg Bryant**,  
Vice President  
**Carrie Olsen**, Secretary  
**Alayna Nigus**, Treasurer  
Becky Schwanke  
Orveda Anderson  
Carol Boggs  
Linda Berkley  
Craig Miller  
Terry Bowen



# FREE EVENTS AT-A-GLANCE

## JANUARY

### Wed 1

**New Years Day** Library closed

### Thu 2

**1:30 PM** Creative Hour

**5:30 PM** Creative Hour

### Fri 3

**1 PM** Senior Social

### Sun 5

**Winter Hours** Library Closed

### Mon 6

**10:30 AM** Toddler Storytime

**4 PM** Friends Board Meeting

**6 PM** Knitting Club

### Tue 7

**2 PM** Quilters Club

**3:45 PM** After School is Cool

### Wed 8

**9:30 AM** Morning Book Club

### Thu 9

**10:30 AM** Preschool Storytime

**1:30 PM** Creative Hour

**3:45 PM** Teen Time

**5:30 PM** Creative Hour

### Sun 12

**Winter Hours** Library Closed

### Mon 13

**10:30 AM** Toddler Storytime

**6 PM** Knitting Club

**6 PM** Diverse Book Club

### Tue 14

**3:45 PM** Wildlife Adventures

### Wed 15

**1-2 PM** Staff meeting, Library closed

### Thu 16

**10:30 AM** Preschool Storytime

**1:30 PM** Creative Hour

**3:45 PM** Teen Time

**5:30 PM** Creative Hour

### Fri 17

**1 PM** Senior Social

### Sun 19

**Winter Hours** Library Closed

### Mon 20

**MLK Day** Library Closed

**6 PM** Evening Book Club

### Tue 21

**12 PM** Travel Club

**2 PM** Quilters Club

**3:45 PM** After School is Cool

### Wed 22

**4 PM** Board of Trustees Meeting

### Thu 23

**10:30 AM** Preschool Storytime

**1:30 PM** Creative Hour

**3:45 PM** Teen Time

**5:30 PM** Creative Hour

**6:00 PM** Art Show Reception

### Sun 26

**Winter Hours** Library Closed

### Mon 27

**10:30 AM** Toddler Storytime

**6 PM** Knitting Club

### Tue 28

**3:45 PM** After School is Cool

### Thu 30

**10:30 AM** Preschool Storytime

**1:30 PM** Creative Hour

**3:45 PM** Teen Time

**5:30 PM** Creative Hour

## FEBRUARY

### Mon 3

**10:30 AM** Toddler Storytime

**4 PM** Friends Board Meeting

**6 PM** Knitting Club

### Tue 4

**2 PM** Quilters Club

**3:45 PM** After School is Cool

### Thu 6

**10:30 AM** Preschool Storytime

**1:30 PM** Creative Hour

**3:45 PM** Teen Time

**5:30 PM** Creative Hour

### Fri 7

**1 PM** Senior Social

### Mon 10

**10:30 AM** Toddler Storytime

**6 PM** Knitting Club

### Tue 11

**3:45 PM** Wildlife Adventures

### Wed 12

**10:30 AM** Morning Book Club

### Thu 13

**ALL DAY** Valentine's Craft Day

**10:30 AM** Preschool Storytime

**1:30 PM** Creative Hour

**3:45 PM** Teen Time

**5:30 PM** Creative Hour

### Mon 17

**Presidents' Day** Library Closed

**6 PM** Evening Book Club

### Tue 18

**12 PM** Travel Club

**2 PM** Quilters Club

**3:45 PM** After School is Cool

### Wed 19

**1-2 PM** Staff meeting, Library closed

### Thu 20

**10:30 AM** Preschool Storytime

**1:30 PM** Creative Hour

**3:45 PM** Teen Time

**5:30 PM** Creative Hour

### Fri 21

**1 PM** Senior Social

### Mon 24

**6 PM** Knitting Club

**6 PM** Evening Book Club

### Tue 25

**2 PM** Quilters Club

**3:45 PM** After School is Cool

### Wed 26

**4 PM** Board of Trustees Meeting

### Thu 27

**10:30 AM** Preschool Storytime

**1:30 PM** Creative Hour

**3:45 PM** Teen Time

**5:30 PM** Creative Hour





MORRILL PUBLIC LIBRARY



# CALL FOR ART

## COMMUNITY ART SHOWCASE

Display your pieces of art at the library for the community to admire.

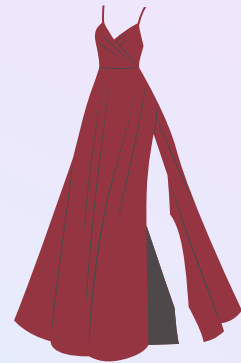
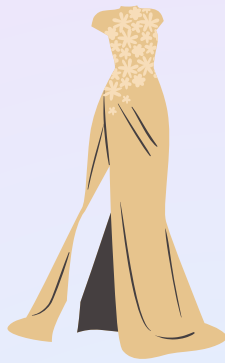
Examples of media: fiber art, digital artwork, sculptures, paper crafts, paintings, etc.

Drop Off: January 16 - January 22 • ALL DAY

Reception: January 23 • Thursday • 6:00 PM to 7:30 PM

Pick Up: January 24 - January 31 • ALL DAY

[community@hiawathalibrary.org](mailto:community@hiawathalibrary.org) • [hiawathalibrary.org/showcase-25](https://hiawathalibrary.org/showcase-25)



# PROM SWAP

Find your next prom outfit at the library! After accepting donations of gently used prom attire, we will have browsing days for teens to pick out items for free.

**Donations are NOT required to pick out a new-to-you outfit!**

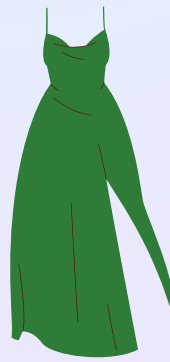
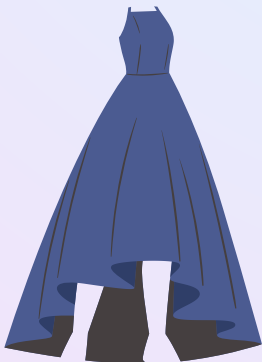
Acceptable donations: Formal dresses, suits, tuxedos; evening shoes; wraps, shawls, & other formal outerwear; clutches and other evening bags

**DONATE**

Feb 3-5 | ALL DAY

**BROWSE**

Feb 5-7 | ALL DAY



# YOUTH EVENTS

## Teen Time

WEEKLY | THU | 3:45 PM

Large Meeting Room

Grades 5 and up. This group will focus on a different craft or activity each week.



## Toddler Storytime

WEEKLY | MON | 10:30 AM

Children's Library

Rain or shine, Miss Traci leads our toddler storytime on Mondays with fun books and songs!



## Teen Book Club

MONTHLY | 2nd THU | 3:30 PM

Large Meeting Room



© CSLP

## After School is Cool

WEEKLY | TUE | 3:45 PM

Large Meeting Room

Anyone going into 1st through 4th grades can join Miss Joey to do a different craft or activity each week when school is in session.

## Wildlife Adventures

MONTHLY | 2nd TUE | 3:45 PM

Large Meeting Room

Children in 1st grade and up can find out about wildlife animals and their environments with hands-on learning activities. This program is sponsored by the K-State Extension Office.



## Preschool Storytime

WEEKLY | THU | 10:30 AM

Children's Library

Miss Elizabeth welcomes our preschool kiddos to her Thursday storytime where she reads books and leads a craft.



# ADULT EVENTS

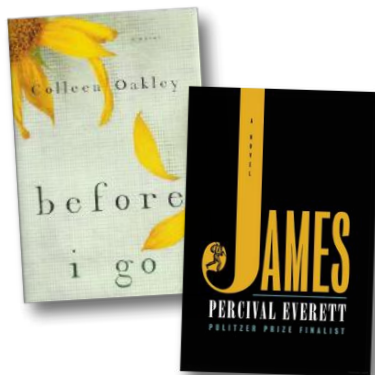
## Morning Book Club

MONTHLY | 2nd WED | 9:30 AM

Large Meeting Room

Jan 8 | *James*

Feb 12 | *Before I Go*



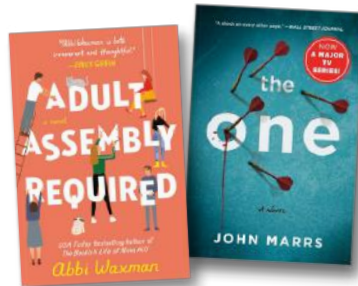
## Evening Book Club

MONTHLY | 3rd MON | 6 PM

McPeak Optometry

Jan 20 | *Adult Assembly Required*

Feb 18 | *The One*



## Senior Social

BIMONTHLY | 1st & 3rd FRI | 1 PM

Large Meeting Room

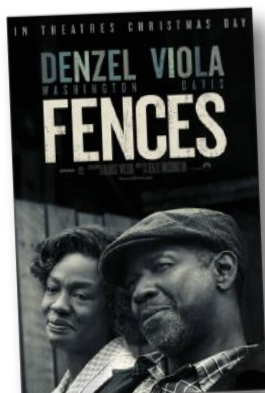
Make new acquaintances or bring your friends to this library program meant to bring together the beloved seniors in our community! Light refreshments and games provided.

## Diverse Voices Book Club

MONTHLY | 2nd MON | 6 PM

Large Meeting Room

Jan 13 | *Fences* (2016 movie)



## Quilters Club

BIMONTHLY | 1st & 3rd TUE | 2 PM

Large Meeting Room

Join other quilters to work on projects and share ideas. Anyone is welcome to attend!



## Knitting Club

WEEKLY | MON | 6 PM

Study Room

This group meets in the library's study room on the top floor.

## Creative Hour

WEEKLY | THU | 1:30 & 5:30 PM

Large Meeting Room

Join Joey May for a crafting venture. The first and second Thursday sessions will do the same craft and the third and fourth Thursday sessions will do the same craft.



# MORRILL PUBLIC LIBRARY

785.742.3831 • [hiawathalibrary.org](http://hiawathalibrary.org) •  

---



## Support the Library!

Make a difference in your community by giving to the library! Your tax-deductible donation helps support library services, collections, events & more. Learn more at [hiawathalibrary.org/support](http://hiawathalibrary.org/support)

## GIVING LEVELS

Classics ---- \$2,500+

Publishers ---- \$1,000 - \$2,499

Editors ---- \$500 - \$999

Best Sellers ---- \$250 - \$499

New Releases ---- \$100 - \$249

---

Library events may be photographed/filmed for promotion in library publications, website, or social media. Attendance automatically confers consent for your likeness to be used. Please notify staff if you decline being photographed for yourself or your child.