

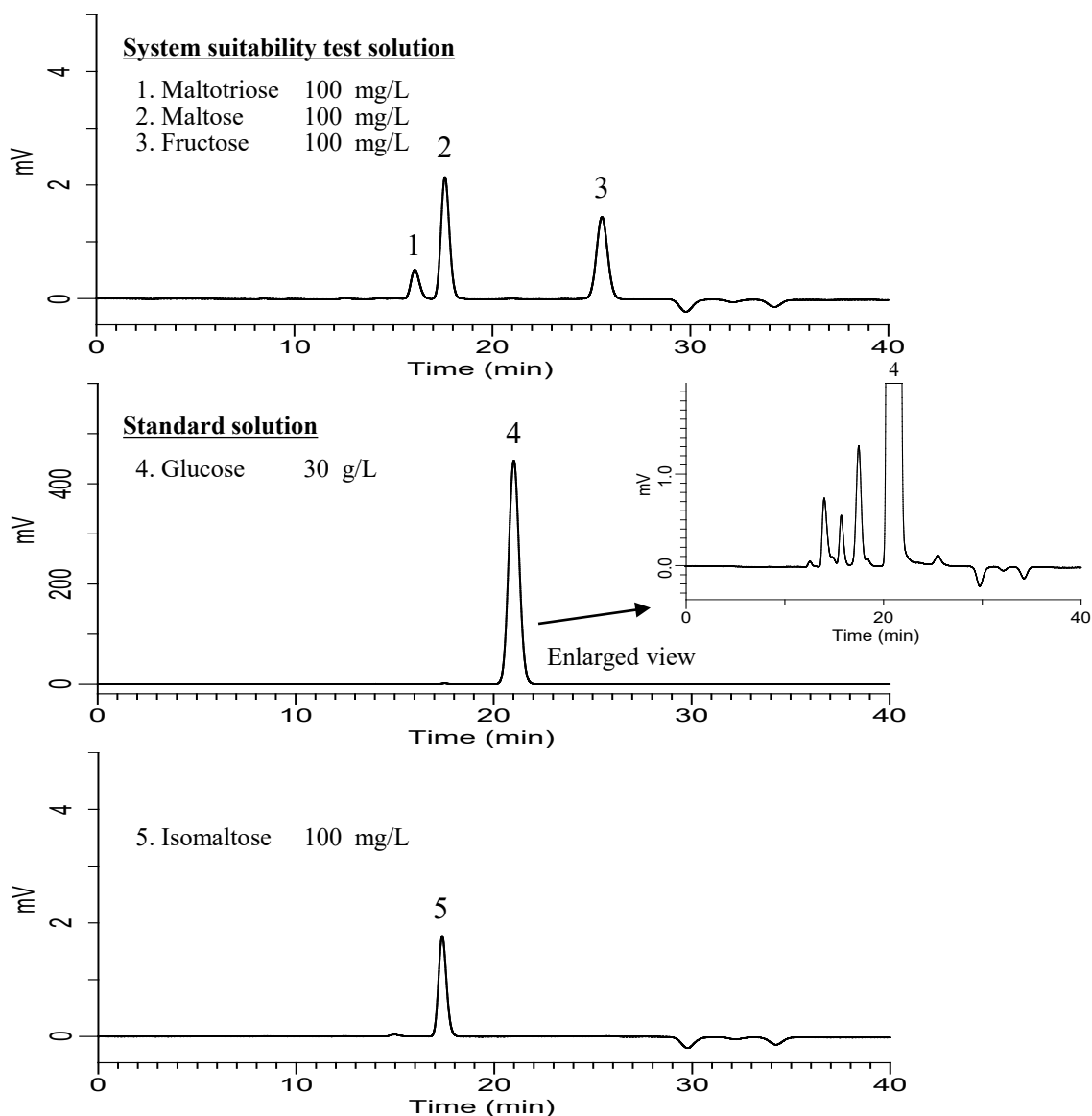
InertSearch™ for LC

Inertsil® Applications

Analysis of Glucose

(Under the condition of the Japanese Pharmacopoeia 18, Purified Glucose)

Data No. LB699-0919



Conditions

System : Chromaster HPLC system
Column : InertSphere Sugar-2
(9 μ m, 300 x 7.8 mm I.D.)
Column Cat. No. : 5020-11000
Eluent : H₂O
Flow Rate : 0.3 mL/min
Col. Temp. : 85 °C
Detection : RI (5450 RI Detector)
Injection Vol. : 20 μ L
Sample : Standard

Analyte:

1. Maltotriose : Relative retention time (1 to 4) : 0.77 (about 0.7)
2. Maltose : Relative retention time (2 to 4) : 0.84 (about 0.8)
3. Fructose : Relative retention time (3 to 4) : 1.22 (about 1.3)
4. Glucose
5. Isomaltose : Relative retention time (5 to 4) : 0.83 (about 0.8)

System suitability solution

Resolution (1, 2) : 1.93 (\geq 1.3)

Standard solution

RSD of the Peak area of 4 (%) (n=6) : 0.14 (\leq 1.0)