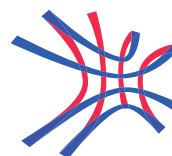


研究生課程 POSTGRADUATE PROGRAMMES

2017

# 耀中幼教 卓越童行

Experience the CIRCLES of Excellence at YCCECE



YEW CHUNG COLLEGE  
OF EARLY CHILDHOOD  
EDUCATION

耀中幼教學院

# Content 目錄



01

Why YCCECE  
認識耀中幼教學院

02

YCCECE Milestones  
耀中幼教學院創校歷史

04

The Future Begins at YCCECE  
未來，由耀中展開

06

Yew Chung Approach to Early Childhood Education  
耀中幼教教學法

07

Partnership and Collaboration  
合作伙伴

08

Master of Education  
教育學碩士

12

Postgraduate Diploma in Education (Early Childhood Education)  
學位教師教育深造文憑 (幼兒教育)



16

Practicum Arrangement, Field Experience &  
Overseas Exposure  
實習安排、幼教體驗及海外學習活動

17

Yew Chung Yew Wah Teachers of Tomorrow Scheme (TOT)  
耀中耀華明師計劃

18

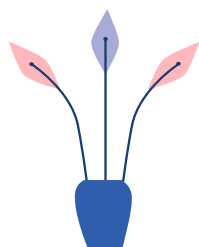
Research and Community Support  
研究項目及社會支援

20

Tuition Fee (Academic Year 2026/27)  
學費

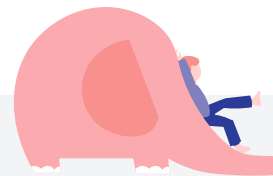
21

Postgraduate Scholarships  
研究生獎學金



# Why YCCECE

## 認識耀中幼教學院



從童心到慧心  
教育成就人生每一篇章：  
從嬰兒到研究生全學段教育

**Education for Every Chapter of Life:  
Comprehensive education spanning all stages  
from Baby to Postgraduate studies**



### Why YCCECE?

The first and only self-financing institution in Hong Kong to offer a Master of Education and a Postgraduate Diploma in Education (Early Childhood Education), supported by a formidable team of educational specialists.

Only PGDE (ECE) programme in Hong Kong awarding with 4 professional licences and enabling graduates to be licensed as Special Child Care Workers.

Leverage 90+ years of history and strong support from the Yew Chung Yew Wah Network.

In 2024, the College proudly attained institutional accreditation for its postgraduate programmes at Qualifications Framework (QF) Level 6 from the Hong Kong Council for Accreditation of Academic and Vocational Qualifications (HKCAAVQ). This achievement paves the way for the introduction of new degrees in the 2025/26 Academic Year.

This milestone not only enriches Yew Chung's more than 90-year legacy of educational excellence but also establishes YCCECE as the first private institution in Hong Kong to offer the Postgraduate Diploma in Education (Early Childhood Education) and Master of Education programmes.

### 為何選擇耀中幼教學院？

全港首間及唯一自資院校推出教育學碩士及學位教師教育深造文憑（幼兒教育）課程並擁有強大的教育專家團隊。

全港唯一學位教師教育深造文憑（幼兒教育）課程頒授 4 個專業資格，包括特殊幼兒教育工作員。

逾 90 年幼教歷史傳承耀中耀華強大網絡。

於 2024 年，學院已成功通過香港學術及職業資歷評審局對開辦資歷架構第六級的機構評審，讓學院可以於 2025/26 學年推出全新的研究生課程。

這不僅是耀中 90 多年歷史中的一個重要里程碑，也是香港高等教育發展的一個關鍵時刻，因為耀中幼教學院將成為全港首間提供學位教師教育深造文憑和碩士學位課程的私營機構，標誌著學院在教育領域的進一步突破。



# YCCECE Milestones

## 耀中幼教學院創校歷史

### The Beginning of Yew Chung Education 耀中教育起點

First Yew Chung School and Kindergarten was founded.  
成立第 1 所耀中學校暨幼稚園。



1932

### Revolutionised Early Childhood Education in Hong Kong 革新香港的幼兒教育

Dr Betty Chan Po-king, Madam Tsang Chor Hang's daughter and currently chairperson of the Board of Governors, revolutionised Early Childhood Education in HK by introducing play-based learning and child-centred approach.

陳保琦博士（創辦人曾楚珩女士的女兒及現任耀中幼教學院校董會主席）在美國完成學業後秉承母志，延續耀中的優質教育使命。陳博士率先革新香港的幼兒教育，引入開放課室的概念，推廣寓學習於遊戲的蕚新思維。



1970s

### Establishment of YCCECE 耀中幼教學院成立

Yew Chung College of Early Childhood Education (YCCECE) was established - being the first and only specialist institute of Early Childhood Education in Asia.

耀中幼教學院成立，成為亞洲首間專注幼兒教育的高等學校。

2018

2014

2008



### Widened Education Network 擴展教育網絡

Yew Chung Community College (YCCC) was established to offer accredited associate degree programmes in 2008.

耀中社區書院於 2008 年成立並提供受認可的副學位課程。

### Launching Higher Diploma in Early Childhood Education programme 開辦幼兒教育高級文憑課程

YCCC became the first private higher education institution in Hong Kong to offer formal teacher training with its Higher Diploma in Early Childhood Education programme that nurtured qualified Early Childhood Education practitioners with academic excellence. Graduates could obtain all 4 professional qualifications issued by the Education Bureau and Social Welfare Department.

耀中社區書院是香港首間獲政府批准提供輔助師培訓的自資院校並開辦幼兒教育高級文憑課程，培育優秀幼教工作者，畢業生可獲由教育局及社會福利署頒發的 4 個專業資格。

## Establishment of Mengxue Institute 中華蒙學苑成立

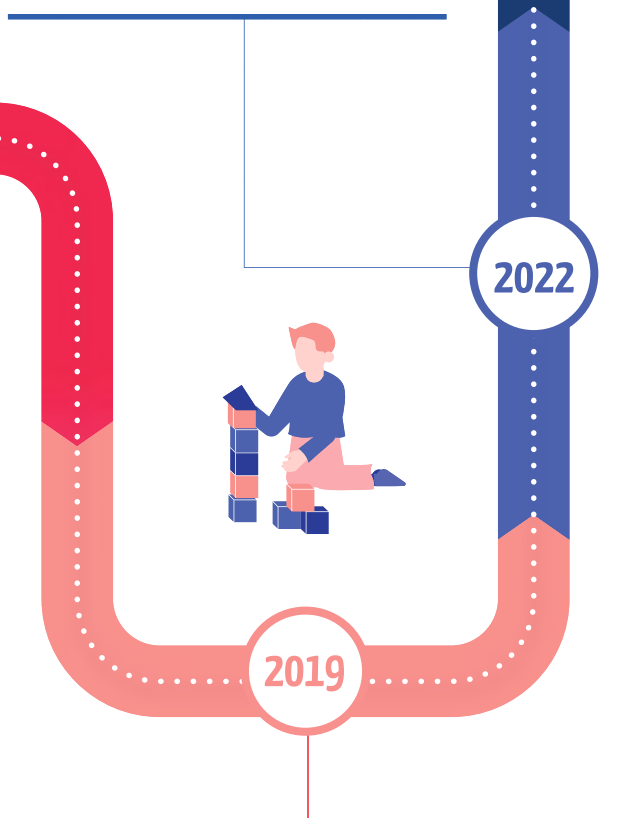
YCCECE Mengxue Institute was officially established on 14 Oct 2022.  
耀中幼教學院·中華蒙學苑於 2022 年 10 月 14 日正式成立。

## Launching Certification Course for Kindergarten Principals

### 開辦幼稚園校長資格培訓證書課程

First private Higher Education Institution in Hong Kong offered the Certification Course for Kindergarten Principals.

學院開辦「幼稚園校長資格培訓證書課程」，成為本港首間開辦幼稚園校長資格培訓證書課程的自資院校。



## Establishment of Pamela Peck Discovery Space 耀學園落成

Pamela Peck Discovery Space (PPDS) is a specialist play space and living lab on campus designed for children from birth to age 8 and their families, offered by the Yew Chung Early Childhood Discovery Centre (YCECDC).

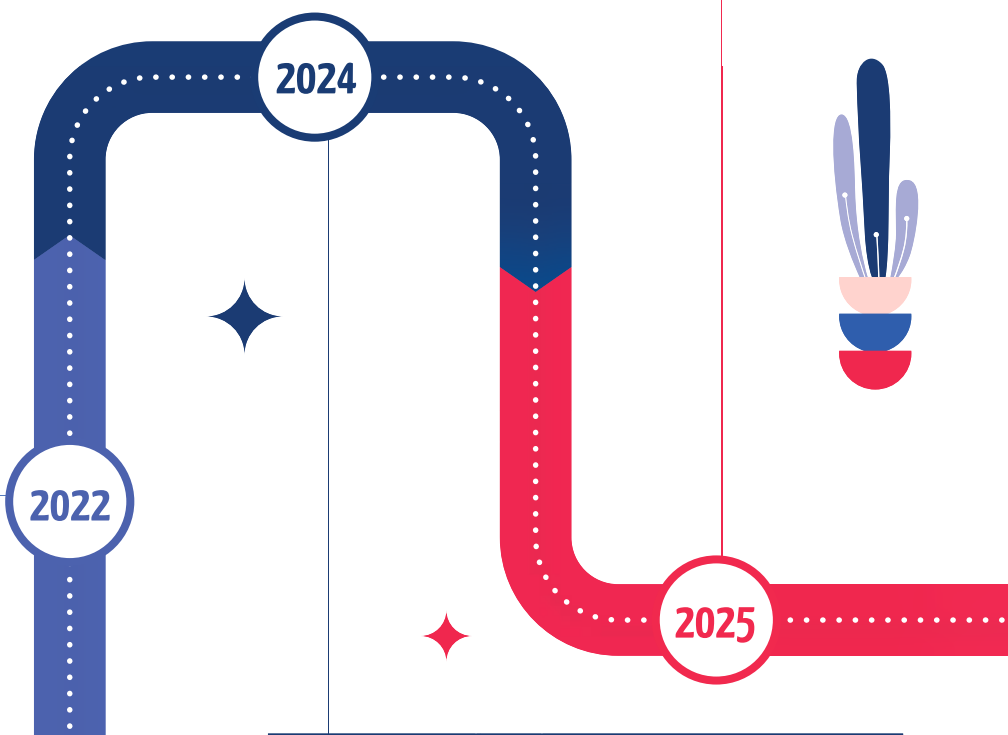
耀中幼教發展中心的耀學園探索空間是一個為初生至 8 歲的兒童及家庭而設的學習環境及生活實驗室。



## Launching Postgraduate Programmes 開辦研究生課程

Officially launched Postgraduate Diploma in Education (Early Childhood Education) and Master of Education programmes.

耀中幼教學院正式推出全新研究生課程：學位教師教育深造文憑(幼兒教育)及教育學碩士課程。



## Establishment of the CHERI 楚珩教育研究所成立

The Chor Hang Educational Research Institute (CHERI) was established at YCCECE.

楚珩教育研究所(楚珩研究所)在耀中幼教學院成立。



Chor Hang Educational  
Research Institute  
楚珩教育研究所

## Successfully achieved institutional accreditation for operating Postgraduate programmes

### 成功通過研究生課程的機構評審

The College has successfully achieved institutional accreditation for operating Postgraduate programmes at Qualifications Framework (QF) Level 6 with the Hong Kong Council for Accreditation of Academic and Vocational Qualifications (HKCAAVQ), paving the way for new degrees to be launched in the 2025 / 26 Academic Year.

學院成功通過香港學術及職業資歷評審局對開辦資歷架構第六級的機構評審，可於 2025/26 學年推出全新的研究生課程。

# The Future Begins at YCCECE

## 未來，由耀中展開



### 01

#### Immediate Professional Qualifications

##### 即時專業資格優勢

Accredited by the Education Bureau and the Social Welfare Department of Hong Kong, graduates are awarded 4 professional qualifications: eligible for registration as a Qualified Kindergarten Teacher, Child Care Worker, and Child Care Centre Supervisor, as well as meeting the requirements for Special Child Care Worker. This prepares them for further studies and a career in early childhood education.

獲香港教育局及社會福利署認可，畢業生具備 4 個專業資格：可註冊為合格幼稚園教師、幼兒工作員、幼兒中心主管，並符合特殊幼兒工作員資格，為未來升學及投身幼兒教育事業作好準備。

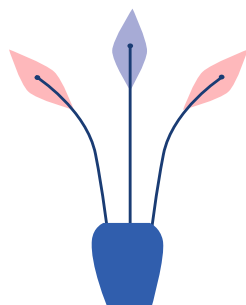
### 02

#### Strong Demand in Premium Education Market

##### 精英化教育需求強勁

Declining birth rates have concentrated resources on high-quality early childhood education. YCCECE graduates are highly sought after by top local and international kindergartens.

出生率下降令資源更集中於優質幼兒教育，耀中幼教畢業生深受本地及國際頂級幼稚園青睞。



### 05

#### Overseas Professional Recognition

##### 海外專業認可

Graduates are eligible to apply for the Singapore Early Childhood Development Agency (ECDA) Early Childhood Teacher Licence, gaining significant competitive advantage in Asia's top Early Childhood Education systems.

畢業即具資格申請新加坡幼兒培育署幼兒教師執照，在亞洲頂尖幼兒教育體系中具顯著競爭優勢。



## 03

### Unique Advantage in the AI Era AI 時代的獨特優勢

Accompanying children in their holistic development, empathy, emotional intelligence and social-emotional learning are core abilities that AI cannot replace. Early childhood education is one of the most future-proof and meaningful professions globally.

陪伴兒童全面發展，同理心、情緒智能及社會情緒學習等核心能力是 AI 無法取代的。幼兒教育是全球最具長遠價值的專業之一。

## 04

### Diverse Global Career Pathways 多元全球發展路徑

Open up multiple career paths in teaching, institutional leadership, EdTech, research, entrepreneurship in child-related sectors, and child psychology, spanning Hong Kong, Greater Bay Area and globally.

開拓兒童領域的教學、機構領導、教育科技、研究、創業及心理輔導等多元職業路徑，涵蓋香港、大灣區及全球。

## 06

### Unique Hands-on Learning Facilities 獨特實踐學習設施

Exclusive access to the Pamela Peck Discovery Space (PPDS) - Hong Kong's first specialist interactive exploration space and unique "teaching and learning laboratory" - providing immersive real-world experience in child observation, parent-child interaction and play-based education.

獨有的耀學園 — 香港首個互動探索空間，為學生及學院提供 1 個獨特的「教與學實驗室」，提供沉浸式幼兒觀察、親子互動及遊戲為本教育的真實專業體驗。

## 07

### Meaningful and Purposeful Career 充滿意義的事業

Accompany and witness children's growth and changes every day, becoming a respected early childhood educator and life mentor who shapes the future.

陪伴並見證孩子的成長變化，成為塑造未來的幼兒教育工作者與生命導師。



# Yew Chung Approach to Early Childhood Education

## 耀中幼教教學法

### The Twelve Values 12 項信條

The 12 Values of the Yew Chung Approach to Early Childhood Education are at the heart of our Yew Chung Yew Wah Early Childhood Education. The 12 Values approach centres on strong relationships that encourage the inner transformation of young learners as they acquire knowledge, personal skills, and character traits of a global citizen. We embed the 12 Values in the design of the indoor and outdoor learning environments, as well as in the intentional daily interactions and routines of school life.

耀中幼教教學法的 12 項信條乃我們幼兒教育模式的核心，它以牢固的關係為中心，鼓勵學生掌握知識、個人技能和全球公民應有的品格，作出內在轉變。從室內外學習環境的設計至校園生活，12 項信條都貫穿於耀中耀華的教育之中。

**12** Teachers make intentional connections to academic skills within child-led experiences  
教師在兒童主導的學習經歷中，有意識地將兒童的學習經驗和學業技能聯繫起來

**11** Children use language to solve both academic and social problems  
兒童使用語言來解決學習和社交問題

**10** Children are supported as emergent multilinguals  
支持兒童自然地學習多種語言

**9** Children are supported in the use of their home language  
支持兒童使用家庭語言

**8** Children initiate and lead activities  
兒童發起並主導活動

**7** Teachers and children construct learning together  
教師和兒童共同建構學習

**6** Children learn through an emergent curriculum  
兒童通過生成課程學習

**5** Teachers support relationships between children  
教師要支持兒童之間建立關係

**4** Strong relationships must be developed between teachers and children  
教師和兒童之間必須建立穩固的關係

**3** Members of the teaching team work together as equals  
教學團隊成員一起平等工作

**2** Children are capable and can be trusted  
兒童是有能力和值得信任的

**1** Children are worthy of our respect and admiration  
兒童是值得我們尊重和欽佩的

#### “Defining A Yew Chung Approach: An Ongoing Project” 《定義耀中幼兒教育法：一個正在進行的項目》

Extracted from keynote address to the Yew Chung 85th Anniversary Conference by Dr Stephanie Sanders-Smith, S.C. (2018, March 16-17)  
摘自：Stephanie Sanders-Smith 博士，S.C.，香港耀中 85 週年會議主題演講，2018 年 3 月 16-17 日耀中耀華的教育之中。

# Partnership and Collaboration

## 合作伙伴

Yew Chung College of Early Childhood Education actively exchanges and collaborates with Chinese Mainland and international early childhood education academia and related institutions\* to promote the development of early childhood education and seize opportunities, providing opportunities for students and teachers to learn and develop and keep pace with the times.

耀中幼教學院與內地及國際幼教學術界及相關機構\*積極交流和合作，促進幼教發展及抓緊機遇，為學生及教學人員提供機會學習及發展機會，與時並進。



佛山暨大港澳子弟學校  
AFFILIATED SCHOOL OF JNU  
For Hong Kong & Macao Students, Foshan



AFFILIATED SCHOOL OF JNU  
For Hong Kong & Macao Students  
廣州暨大港澳子弟學校



UNIVERSITY  
OF WOLLONGONG  
AUSTRALIA



青島恒星科技學院  
QINGDAO HENXING UNIVERSITY OF SCIENCE AND TECHNOLOGY



東莞市海逸外國語學校  
DONGGUAN LAGUNA VERONA FOREIGN LANGUAGE SCHOOL



香港中文中學聯會  
The Association of Hong Kong Chinese Middle Schools



\* Sequence in no particular order 排名次序不分先後

Not an exhaustive list 不能盡錄



# Master of Education

## 教育學碩士

1  
year 年

1.5  
years 年

2  
years 年

E

普

The Master of Education programme cultivates visionary leaders equipped to champion positive change in education for the digital age. Building upon the renowned Yew Chung Approach to Early Childhood Education, it offers interdisciplinary electives in global education, developmental science, and educational technology. The programme expertly balances academic rigor with exceptional flexibility, allowing students to design a personalised learning journey that meets both the evolving demands of the field and their unique professional aspirations.

Upon successful completion of the programme, students will develop strong professional competencies and leadership capabilities in the field of education. They will be able to design and evaluate inclusive programmes that incorporate elements of diversity and innovation to meet the needs of all learners; analyse contemporary and emerging educational challenges with a solid ethical perspective and a strong sense of social responsibility; generate new knowledge through research conducted in authentic settings such as the Pamela Peck Discovery Space; and collaborate effectively with various stakeholders to advocate for high-quality, forward-looking education.

Whether you are an experienced educator seeking further professional growth, a professional transitioning into the education sector, or a recent graduate aspiring to leadership roles, the Master of Education programme equips participants with cutting-edge skills, global perspectives, and valuable professional networks. In an era of rapid technological and societal change, it empowers you to lead positive transformation in classrooms, educational institutions, and the wider community.

教育學碩士課程旨在培養具遠見的教育領導者，推動教育領域在數字化時代實現正向轉型。課程以卓越的耀中幼兒教育理念為核心，並透過全球教育、發展科學、教育科技等跨領域選修科目加以深化，既具備專業深度，亦可讓學生因應當今教育環境的多元需求，量身規劃個人職涯路徑。

完成本課程後，學生將在教育領域具備專業能力與領導才能，能夠設計並評估包容多元與創新元素的課程，以滿足所有學習者的需要；同時以堅實的倫理視野與社會責任感，分析當代及新興的教育挑戰；透過耀學園等真實情境進行研究，創造新知識；並與各界持份者有效協作，共同倡導高質素、前瞻性的優質教育。

不論是尋求專業成長的資深教育工作者、計劃轉職教育界的專業人士，還是期望擔任領導職位的應屆畢業生，教育學碩士課程均能為學員提供前沿技能、全球視野及專業網絡，在科技與社會快速變遷的時代中，引領課室、教育機構及社區的正向改變。

1  
year 年

1.5  
years 年

2  
years 年

E English-medium Instruction  
英語授課

普 Putonghua-medium Instruction  
普通話授課

## Programme Special Features 課程特色



## Programme Objectives 課程目標

1. Demonstrate professional and interdisciplinary competencies and develop effective communication, mentoring, and leadership skills in the ever-developing field of Education;
  2. Cultivate an appreciation of, and a personal capacity for, promoting innovation and diversity in educational environments.
  3. Adhere to professional ethics through promoting ethical practices, demonstrating social responsibility, and fostering collegial relationships, encouraging participants to embrace a deep sense of moral responsibility in their professional conduct.
1. 提升學生的專業與跨領域能力，並在不斷發展的教育領域中培養有效的溝通、指導與領導技能；
  2. 培養對教育環境中創新與多元發展的理解，同時提升個人在相關範疇的實踐能力。
  3. 透過推廣道德實踐、展現社會責任及促進同儕協作，培養學生的專業操守，鼓勵其在專業行為中秉持深刻的道德責任感。

## Curriculum Components 課程組成部分

The Master of Education programme consists of 3 key components:

教育學碩士課程包含 3 大核心組成部分：

**Academic Courses - Core** courses critically examine key issues in education, equipping students with research evidence and evidence-informed practice.

學術課程——核心課程透過深入探討教育領域的關鍵議題，引導學生掌握研究證據與實證為本的實踐方法。

**Electives - A flexible range of contemporary courses** in global education, developmental science, and educational technology, allowing students to explore interdisciplinary interests beyond Early Childhood Education.

選修課程——提供全球教育、發展科學及教育科技等當代主題課程，讓學生得以探索幼兒教育以外的跨領域興趣。

**Final Project - Students choose either a Research-based Project** (empirical research) or a Practice-based Inquiry (application and reflection in real-life settings), following Professional Integrated Learning (PIL).

畢業專題——學生可選擇「研究專題」（實證研究）或「實踐性探究」（真實情境應用與反思），並遵循專業綜合學習課程（PIL）模式。

This structure balances theory and practice, enabling students to deepen Early Childhood Education expertise while tailoring their studies to individual career or academic goals.

此架構兼顧理論與實踐，讓學生在深化幼兒教育專業知識的同時，可因應個人職涯或學術目標規劃學習進程。

## Programme Curriculum 課程結構

| Course Title                                    | 課程名稱              | QF Credits 資歷學分 |
|---|-------------------|-----------------|
| Child and Family Education                      | 兒童和家庭教育           | 10              |
| Educational Values and Philosophy               | 教育價值觀與哲學          | 10              |
| Inclusion and Educational Equity in Early Years | 早期教育中的融合和教育公平     | 10              |
| Introduction to Educational Research            | 教育研究導論            | 10              |
| Professional Integrated Learning (PIL)          | 專業綜合學習            | 10              |
| Elective Course*                                | 選修課程*             | 10              |
| Elective Course*                                | 選修課程*             | 10              |
| Elective Course*                                | 選修課程*             | 10              |
| Final Project <sup>#</sup>                      | 畢業專題 <sup>#</sup> | 30              |

Grand Total 總資歷學分

# 110

- \* Elective Courses: Students should select 3 Elective Courses (out of 7 options)
- Contemporary Global Challenges in Education
  - International Educational Reform
  - Sustainable Global Education
  - Digital Literacy and Fluency in the New Era
  - Educational Technology for Curriculum and Assessment Enhancement
  - Ethics and Contemporary Issues in Developmental Psychology
  - The Neuroscience of Learning

- # Final Project  
(Students have to select 1 of 3 courses)
- Research-based Project
  - Practice-based Inquiry

- \* 選修課程：學生應從 7 個選項中選修 3 門選修課程
- 當代教育的全球挑戰
  - 全球教育改革
  - 可持續的全球教育
  - 新時代的數位素養和流利度
  - 強化課程和評估的教育技術
  - 發展心理學中的倫理和當代問題
  - 學習的神經科學

- # 畢業專題  
(學生必須選擇其中 1 門課程)
- 研究專題
  - 實踐性探究

## Admission Requirements 入學要求

### For students in the English as Medium of Instruction (EMI) class

#### 適用於英語為教學語言 (EMI) 班級之學生：

Hold a recognised Bachelor's degree or equivalent, and 持有認可的學士學位或同等學歷，並

Fulfil the College's minimum English language requirements, i.e., applicants should have:

1. Obtained the degree from a programme for which the medium of instruction was English; or
2. Achieved the scores indicated in one of the following English language tests: i. TOEFL: 550 (paper-based) / 79 (Internetbased); or ii. IELTS (academic): 6.5; or iii. GMAT (verbal): Band 21; or
3. Achieved Level 4 or above in the English Language subject in the Hong Kong Diploma of Secondary Education Examination (HKDSE); or equivalent; and

符合學院的最低英語語言要求，申請人須具備以下條件：

1. 於以英語為教學語言的課程取得學位；或
2. 於以下任一英語能力測驗達到指定分數：i. 托福 (TOEFL)：紙筆測驗 550 分 / 網路測驗 79 分；或 ii. 雅思 (學術類)：總分 6.5 分；或 iii. 研究生管理科學入學考試 (GMAT) 語文部分 21 分或以上；或
3. 於香港中學文憑考試 (HKDSE) 英語科考獲第 4 級或以上成績，或具備同等學歷；

Pass the admission interview in English.  
通過以英語進行的入學面試。

### For students in the Chinese as Medium of Instruction (CMI) class

#### 適用於中文為教學語言 (CMI) 班級之學生：

Hold a recognised Bachelor's degree or equivalent, and 有認可的學士學位或同等學歷，並

Fulfil the College's minimum Chinese language requirements, i.e., applicants should have:

1. Obtained the degree from a programme for which the medium of instruction was Chinese; or
2. Achieved Level 4 or above in the Chinese Language subject in the Hong Kong Diploma of Secondary Education Examination (HKDSE); or equivalent; and

符合學院的最低中文語言要求，申請人須具備以下條件：

1. 持有以中文為教學語言課程頒授的學位；或
2. 於香港中學文憑考試 (HKDSE) 中文科考獲第 4 級或以上成績，或具備同等學歷；以及

Pass the admission interview in Putonghua.  
通過以普通話進行的入學面試。

## Career Opportunities 就業前景

School administration  
學校行政管理



Adult and vocational training  
成人與職業培訓



Teacher education and  
classroom teaching  
政策制定及課程發展



Policy development and  
curriculum development  
師資培育及課堂教學



Educational assessment  
and evaluation  
教育評量與評估



Educational research and  
other relevant fields  
教育研究及其他教育相關範疇



QF Level 資歷級別



Qualifications Framework (QF) Information 資歷架構

QR Registration Number 資歷名冊：

**25/000391/L6**

Registration Validity Period 登記有效期：

**01/09/2025 - 31/08/2028**



## Postgraduate Diploma in Education (Early Childhood Education) 學位教師教育深造文憑 (幼兒教育)

1  
year

E



The Postgraduate Diploma in Education (Early Childhood Education) programme aims to nurture early childhood educators equipped with professional knowledge and practical skills, enabling graduates to competently undertake both teaching and administrative duties in kindergartens. Closely aligned with the latest developments in Hong Kong education, the programme integrates theoretical foundations with real-world application, helping students fully support children's physical, mental and learning needs in a digitalised and diverse environment.

Upon successful completion of the programme, students will be able to conduct a holistic analysis of children's development across different contexts and promote their optimal learning outcomes; formulate and implement appropriate strategies to address children's motivation and behaviour in diverse settings; flexibly apply assessment methods, incorporating digital tools, to continuously promote children's all-round development; establish mutually respectful collaborative relationships with families and the community while actively advocating for home-school-community partnership; enhance the quality of school education through peer collaboration; and uphold teachers' professional conduct and ethical standards in compliance with the professional requirements of the Education Bureau and the Social Welfare Department of Hong Kong.

The programme tightly integrates theory and practice through teaching practicum, electronic learning portfolios and educational visits, while encouraging students to develop critical thinking and innovative teaching abilities. By linking academic preparation with practical application, this programme cultivates graduates with a forward-looking vision, providing high-quality and future-oriented learning experiences for young children in Hong Kong and the Greater Bay Area, and making positive contributions to the education sector.

學位教師教育深造文憑 (幼兒教育) 課程，旨在培育具專業知識、實務技能的幼兒教育工作者，讓畢業生能夠勝任幼稚園教學和行政工作。課程緊貼香港教育最新發展，融合理論基礎及實際應用，幫助學生在數碼化及多元環境下，全面支援幼兒的身心發展和學習需要。

完成課程後，學生將能夠全面分析幼兒在不同情境下的發展狀況，並促進其最佳學習成效；制定及實施相應策略，以應對多元環境中幼兒的動機及行為；靈活運用評估方法，持續推動幼兒全人發展；與家庭、社區建立相互尊重的合作關係，倡導家校社共融；透過同儕協作，共同提升學校教育品質；恪守教師專業操守、道德準則，符合香港教育局、社會福利署的專業要求。

課程透過實習教學、電子學習歷程檔案、教育外訪，將理論與實務緊密結合，同時鼓勵學生發展批判性思考、創新教學能力，為香港以至大灣區的幼兒教育提供高質素、具未來感的學習體驗，對教育領域作出積極貢獻。

1  
year

1 Year  
1 年制

E

English-medium Instruction  
英語授課



Registered Qualified  
Kindergarten Teacher (RQKT)  
註冊幼稚園教師



Registered Child Care  
Worker (CCW)  
註冊幼兒工作員



Registered Child Care  
Supervisor (CCS)  
註冊幼兒中心主管



Special Child Care  
Worker (SCCW)  
認可特殊幼兒工作員

## Programme Special Features 課程特色



## Programme Objectives 課程目標

1. Engage in lifelong learning with a capability for independent learning and critical thinking and the ability to deal with complex and/or new information, and to apply this knowledge to inform decision-making and problem-solving in educational contexts;
  2. Demonstrate ability to critically review, consolidate and extend systematic knowledge and skills about the holistic nature of child development, and the role of culture and the family as influences that shape children’s development;
  3. Pursue career, further study and ongoing professional development (e.g. Certificate for Kindergarten Principals, Master’s or Doctoral programmes, or other related training), enhance career objectives and contribute to the overall advancement of the field of ECE;
  4. Register as Kindergarten Teachers with the Education Bureau (EDB); and
  5. Register as Child Care Workers, Child Care Supervisors, and qualified as Special Child Care Workers with the Social Welfare Department (SWD).
1. 具備終身學習能力，養成自主學習與批判思考的素養，能夠處理複雜及 / 或新資訊，並將所學知識應用於教育情境中的決策制定與問題解決；
  2. 展現批判性檢視、整合及拓展系統性知識與技能的能力，全面掌握兒童發展的整體本質，並深入理解文化與家庭作為塑造兒童發展關鍵因素的影響角色；
  3. 追求職業發展、進修深造及持續專業進修，包括修讀幼稚園校長證書課程、碩士或博士學位課程，以及其他相關培訓，以提升個人職業目標，同時為幼兒教育領域的整體進步作出貢獻；
  4. 向教育局（EDB）註冊為幼稚園教師；以及
  5. 向社會福利署（SWD）註冊成為幼兒工作員及幼兒中心主管，同時取得特殊幼兒工作員專業資格。

## Curriculum Components 課程組成部分

The structure of the curriculum of the PGDE(ECE) Programme comprises of (i) core / credit-bearing courses including academic ECE courses, PIL and Practicum and (ii) non-credit bearing courses.

The Postgraduate Diploma in Education (Early Childhood Education) is structured around 3 core components:

**Academic Courses:** Foundational and progressive study across all EDB Framework domains (Child Studies, Foundations of ECE, Curriculum, Diverse Needs, Management & Sustainability, Parental Involvement), plus targeted support for government priorities (0-3 age group, non-Chinese speaking children, special needs).

學術課程：涵蓋教育發展局框架所有領域（幼兒研究、幼兒教育基礎、課程設計、多元需求、管理與可持續發展、家長參與）的基礎與進階研習，並針對政府重點政策提供專項支援（0-3 歲幼兒、非華語兒童、特殊教育需求）。

**Professional Integrated Learning (PIL)** 16 weeks of supervised immersion in local and international ECE settings, with a dedicated site mentor. Students observe, collaborate, and take increasing responsibility - a unique feature among Hong Kong PGDE(ECE) programmes.

專業綜合學習課程（PIL）：課程設有為期 16 週的實習安排，學生將於本地及國際幼兒教育環境中進行實踐，並由專責實習導師全程督導。透過觀察、協作及逐步承擔責任，學生得以深化專業實踐能力——此乃香港幼兒教育學位課程中獨有的特色。

**Practicum:** 8-week supervised teaching in diverse settings (local/international kindergartens, special needs environments), including at least 56 hours of independent classroom teaching under College supervision.

實習課程：學生將進行為期 8 週的督導教學實習，地點涵蓋本地及國際幼稚園、特殊教育環境等多元機構。實習期間須完成至少 56 小時的獨立課堂教學，並由學院導師指導。

學位教師教育深造文憑（幼兒教育）課程結構涵蓋以下 2 部分：(i) 核心 / 學分課程，包括幼兒教育專業課程、專業綜合學習及實習相關科目；以及 (ii) 非學分課程。

學位教師教育深造文憑課程（幼兒教育）包含 3 個核心組成部分：

Non-credit enrichment includes the Yew Chung Values and Approaches course (pioneering play-based and emergent curriculum) and courses on National Security Education and Early Childhood Education in Chinese Mainland (preparation for GBA/Mainland careers and National Kindergarten Teacher Qualification).

This structure blends rigorous theory, extensive practice, and societal awareness to produce highly competent, globally ready ECE professionals.

非學分增益課程涵蓋耀中教育方式與教學法，聚焦開創性的遊戲為本及新興課程理念；同時設有國家安全教育與中國內地幼兒教育課程，為學生銜接大灣區及內地職涯發展，以及考取國家幼兒園教師資格認證做好準備。

此課程架構融合嚴謹的理論基礎、豐富的實踐經驗與社會意識，致力培育具備高度專業能力及全球化視野的幼兒教育人才。

## Programme Curriculum 課程結構

| Course Title   | 課程名稱                 | QF Credits<br>資歷學分 |
|--|----------------------|--------------------|
| <b>Term 1</b>  |                      |                    |
| Child Studies I  | 兒童研究 I               | 5                  |
| Curriculum in ECE I  | 幼兒教育課程 I             | 5                  |
| Foundations of ECE   | 幼兒教育基礎               | 10                 |
| Children with Diverse Needs I  | 兒童特殊教育 I             | 10                 |
| Educational Management and Sustainable Development of EC Settings I    | 教育管理與幼兒教育環境的可持續發展 I  | 5                  |
| Parental Involvement in ECE I  | 幼兒教育中的家長參與 I         | 5                  |
| Professional Integrated Learning I                                     | 專業綜合學習課程 I           | 40                 |
| <b>Term 2</b>  |                      |                    |
| Child Studies II   | 兒童研究 II              | 5                  |
| Curriculum in ECE II   | 幼兒教育課程 II            | 5                  |
| Assessment and Specialised Instruction for Children with Diverse Needs | 特殊需求兒童的評估與專項教學       | 10                 |
| Parental Involvement in ECE II   | 幼兒教育中的家長參與 II        | 5                  |
| Educational Management and Sustainable Development of EC Settings II   | 教育管理與幼兒教育環境的可持續發展 II | 5                  |
| Practicum  | 實習課程                 | 38                 |
| Professional Integrated Learning II                                    | 專業綜合學習課程 II          | 40                 |

Grand Total 總資歷學分

**188**

## Career Opportunities 就業前景

As registered Kindergarten Teachers, Child Care Workers, Child Care Supervisors, and Special Child Care Workers

畢業生可獲取註冊幼稚園教師、幼兒工作員、幼兒中心主管及特殊幼兒工作員等專業資格



Graduates can be employed as teachers in kindergartens and work in various childcare centres in Hong Kong

於香港各幼稚園及幼兒中心擔任教學及管理職務



Riding on the support to the College by the Yew Chung Education Foundation (YCEF) and the Yew Chung Yew Wah Education Network (YCYWEN) and the implementation of the Teachers of Tomorrow Scheme, the College's PGDE(ECE) Programme offers a unique opportunity for graduates to have exclusive employments in the kindergartens not only in Hong Kong but also and especially in Chinese Mainland, which is getting increasingly important given the intensive development in the Early Childhood Education sector there

憑藉耀中教育機構 (YCEF) 及耀中耀華教育網絡 (YCYWEN) 的支持，配合「明師計劃」，畢業生可獲獨家聘用機會，尤其於中國內地幼兒教育蓬勃發展的地區開拓事業



## Admission Requirements 入學要求

Hold a recognised Bachelor's degree or equivalent; and  
持有認可的學士學位或同等學歷，並

Fulfil the College's minimum English language requirements, i.e., applicants should have:

1. Obtained the degree from a programme for which the medium of instruction was English; or
2. Achieved the scores indicated in one of the following English language tests: i. TOEFL: 550 (paper-based) / 79 (Internet based); or ii. IELTS (academic): 6.5; or iii. GMAT (verbal): Band 21; or
3. Achieved Level 4 or above in the English Language subject in the Hong Kong Diploma of Secondary Education Examination (HKDSE); or equivalent and

符合學院的最低英語語言要求，申請人須具備以下條件：

1. 於以英語為教學語言的課程取得學位；或
2. 於以下任一英語能力測驗達到指定分數：i. 托福 (TOEFL)：紙筆測驗 550 分 / 網路測驗 79 分；或 ii. 雅思 (學術類)：總分 6.5 分；或 iii. 研究生管理科學入學考試 (GMAT) 語文部分 21 分或以上；或
3. 於香港中學文憑考試 (HKDSE) 英語科考獲第 4 級或以上成績，或具備同等學歷；

Pass the admission interview.  
通過入學面試。



QF Level 資歷級別

Qualifications Framework (QF) Information 資歷架構

QR Registration Number 資歷名冊：

**25/000718/L6**

Registration Validity Period 登記有效期：

**01/09/2025 - 31/08/2028**

# Practicum Arrangement, Field Experience & Overseas Exposure

## 實習安排、幼教體驗及海外學習活動

### Practicum 實習安排

The Postgraduate Diploma in Education (Early Childhood Education) features 8 weeks of practicum and 16 weeks of professional integrated learning (PIL). The Master of Education also includes 2 weeks of professional integrated learning (PIL).

Students will undertake practicum at local and international kindergartens, child care centres and special educational institutions, with further opportunities to participate in Yew Chung International School's exclusive Teachers of Tomorrow Scheme (TOT), thereby accumulating diverse and invaluable practical experience.

學位教師教育深造文憑（幼兒教育）設有 8 星期的實習安排及 16 星期的專業綜合學習；教育學碩士課程亦設有 2 星期的專業綜合學習。

學生將先後到本地幼稚園、國際幼稚園、幼兒中心及特殊教育機構進行實習，更有機會參與耀中國際學校的獨家明師計劃，累積多元而寶貴的實踐經驗。



# Yew Chung Yew Wah Teachers of Tomorrow Scheme (TOT) 耀中耀華明師計劃

Under our unique Yew Chung Yew Wah Teachers of Tomorrow Scheme (TOT), Postgraduate Diploma in Education (Early Childhood Education) graduates can enjoy an exclusive employment opportunity at Yew Chung International Schools in Hong Kong or Chinese Mainland. Students who have excelled academically can apply, and the employment duration is typically 1 year, giving them the best start to their careers.

耀中教育機構特意設立「耀中耀華明師計劃」，為學位教師教育深造文憑（幼兒教育）畢業生提供獨一無二的事業起步機會，讓這些表現優秀且成功通過甄選的畢業生於香港或內地耀中、耀華幼稚園工作至少1年。



# Research and Community Support

## 研究項目及社會支援

YCCECE is making an impact on the most fast-moving and challenging early childhood education trend in Hong Kong. Actively interact with professional parties, the Research Office is thrived to closely collaborate and have exchange connection with the government and industry leaders to facilitate in-depth research that contribute to Early Childhood Education in Hong Kong.

The College utilises both public and private-sector fundings appropriately for every type of project. As a pioneer and the very first and only specialist higher education institution in Asia, it shares the latest research findings and provides support for the operation of lectures and conferences for the general public.

### Jockey Club 'CoolPlay' Project 賽馬會「智·幼·趣」計劃

Phase 2 of the Jockey Club 'CoolPlay' Project, co-organised by YCCECE and Hong Kong Christian Service with funding from The Hong Kong Jockey Club Charities Trust, is one of Hong Kong's most ambitious early childhood education initiatives. Running from 2023 to 2027, it brings exploration-based learning to seven grassroots districts, reaching 414 kindergartens, over 55,000 children and their families, 239 principals, and 1,423 teachers.

The project operates across four interconnected strands. Families receive the JumpStarter series, hands-on exploration kits designed around big ideas, accompanied by a digital platform offering over 200 activities for home learning. Teachers participate in structured professional development, building the skills and confidence to embed exploratory learning in their classrooms. Parent engagement has expanded from YCCECE's Discovery Space into schools and communities across all seven districts, through Hong Kong Christian Service's extensive community networks. Together, these strands strengthen a sustainable Home-School-Community ecosystem that supports children's exploration at every level.

The project's impact is well evidenced. The JumpStarter series earned four international awards at the International Invention Competition in Canada (iCAN) 2023 and the 2023 International Innovation and Invention Competition (IIIC), including two Gold medals and a Top 20 Best Invention Award. The project's teacher development work received an Honourable Mention at the Federation for Self-financing Tertiary Education (FSTE) Teaching Excellence Award, presented by the Secretary for Education, Dr Christine Choi. The annual CoolPlay Fun Fair has become one of Hong Kong's most popular parent-child events, with tickets typically sold out within minutes of release.

耀中幼教學院一直致力以研究成果與獨特的灼見激發教育之旅或為社會帶來貢獻。學院的在校研究項目得到非政府機構的支持與資助，由學院的世界知名幼教專家領導，融匯堅實的專業知識與豐富的經驗，受到廣泛認同的研究往往為幼兒教育提供切實可行的改進方案。



賽馬會「智·幼·趣」計劃第二階段由耀中幼教學院與香港基督教服務處共同主辦，並獲香港賽馬會慈善信託基金資助，是香港規模最大的幼兒教育項目之一。計劃於 2023 年至 2027 年間，將探索式學習帶入七個基層社區，惠及 414 所幼稚園、超過 55,000 名幼兒及其家庭、239 名校長及 1,423 名教師。

計劃涵蓋四個緊密相連的核心範疇。在學習資源方面，家庭可獲得以核心概念為主題的 JumpStarter 親子探索盒子，配合提供逾 200 個活動的網上平台，支援幼兒在家探索學習。在教師培訓方面，計劃為教師提供系統性的專業發展支援，協助他們將探索式學習融入日常課堂。在家長參與方面，活動由耀中幼教學院的耀學園出發，通過香港基督教服務處廣泛的社區網絡，延伸至七個地區的學校與社區。上述各範疇相輔相成，共同建立可持續的「家、校、社」生態，全方位支援幼兒的探索成長。

計劃成效有目共睹。JumpStarter 系列在 2023 年加拿大國際發明及創新比賽 (iCAN) 及 2023 年國際創新發明競賽 (IIIC) 中榮獲四個獎項，包括兩項金獎及「最佳二十大創新發明獎」。計劃的教師培訓工作亦榮獲自資專上教育聯盟 (FSTE) 卓越教學獎優異獎，由教育局局長蔡若蓮博士親自頒發。每年舉辦的「智·幼·趣」探索嘉年華更已成為全港最受歡迎的親子活動之一，活動門票通常在數分鐘內售罄。





## Jockey Club 'Bright Start' Project 賽馬會幼兒「喜步」計劃



Building on the success of its first phase, the Jockey Club 'Bright Start' Project has received continued funding support from The Hong Kong Jockey Club Charities Trust, launching its four-year second phase in 2025. This initiative is organised by the Yew Chung College of Early Childhood Education, with the Pacific Early Childhood Education Research Association (Hong Kong) and The Chinese University of Hong Kong serving as professional partners to provide comprehensive support to approximately 80% of child care centres in Hong Kong that serve infants and toddlers from birth to age three, parents, and the community.

The project encompasses a range of professional development initiatives, including multidisciplinary collaboration and coaching, building professional learning communities, overseas professional exchange, parents and community engagement, infrastructure optimisation, and digital platform. Through multidisciplinary collaboration, the project is committed to strengthening the professional capacity of practitioners, while further advancing support for parent education and community participation, thereby promoting the continuous enhancement and development of services for infants and toddlers.

賽馬會幼兒「喜步」計劃獲香港賽馬會慈善信託基金繼續撥款捐助，於 2025 年展開為期 4 年的第二階段。本計劃由耀中幼教學院主辦，並聯同太平洋區幼兒教育研究學會（香港）及香港中文大學為專業夥伴，攜手為全港約八成初中生至 3 歲嬰幼兒提供服務的幼兒中心、家長及社區提供全面支援。

計劃涵蓋一系列專業發展支援項目，包括：跨專業協作與啟導、建立專業學習社群、海外專業交流、家校與社區實踐、基礎設施優化及數碼化發展平台。透過跨專業領域協作，致力提升教顧者的專業能力，並進一步推動家長教育及社區參與的支援，促進嬰幼兒服務的持續優化與發展。



## Jockey Club 'Spark & Spot' Project 賽馬會「點亮·亮點」計劃





The Jockey Club Spark & Spot Project, funded by The Hong Kong Jockey Club Charities Trust and organised by Yew Chung College of Early Childhood Education, spans across 46 months from 2024 to 2027, focusing on the theme 'Enriching Education, Empowering Diversity'. The Project aims to equip local kindergartens and nursery schools to optimise inclusive teaching practices and embrace learner diversity through professional development, coaching and environment enhancement. It builds a community of practice to foster early childhood educators' self-efficacy in creating an inclusive learning environment to bring about a long-lasting learner-centric change in early childhood education. The Project will benefit approximately 90 kindergartens and nursery schools, 340 teachers and 160 administrators including school principals and head teachers.

賽馬會「點亮·亮點」計劃由賽馬會慈善信託基金捐助，耀中幼教學院主辦，以「拉闊教育擁抱共融」為理念，支援發展以實證為本的全納教育模式。

計劃為期 46 個月（2024–2027 年），透過教職員專業培訓、校本教學啟導，以及增潤多元感官元素的全納校園環境設計，幫助本地幼稚園及幼兒學校推動照顧學習多樣性，實踐全納理念。同時，通過建立實踐社群提昇學前教育工作者對創建全納學習環境的自我效能感，促進幼兒教育界實踐以學生為本的長遠及可持續教學理念。計劃將惠及 90 多間幼稚園和幼兒學校，約 340 名幼師和 160 名校長、主任等管理層人員。

# Tuition Free (Academic Year 2026 / 27)

## 學費

|  | Full-time (1 year 年)   | Part-time (2 years 年)  |
|--|--|--|
| <br><b>Master of Education</b><br>教育學碩士   | \$238,000<br>\$119,000 per installment x<br>2 installments<br>分 2 期繳交，每期 \$119,000 | \$238,000<br>\$59,500 per installment x<br>4 installments<br>分 4 期繳交，每期 \$59,500 |
| <br><b>Postgraduate Diploma<br/>in Education<br/>(Early Childhood Education)</b><br>學位教師教育深造文憑 (幼兒教育) | \$207,000<br>\$103,500 per installment x<br>2 installments<br>分 2 期繳交，每期 \$103,500 | /  |

## How to Apply 入學申請程序

### Complete Application

- Apply via <https://apply.yccece.edu.hk/>
- Create a new account for submitting application
- Applicants are required to settle the non-refundable application fee

### Interview Arrangements

- Applicants will be invited to attend an admission interview
- Upon passing the admission interview, applicants will receive a conditional or confirmed offer

### Offer Acceptance

#### Applicants are required to –

- Complete the registration procedures
- Settle the registration fee

01

### 遞交申請

- 瀏覽 <https://apply.yccece.edu.hk/>
- 建立新帳戶以遞交申請
- 申請人須繳交報名費，取錄與否概不退還

02

### 面試安排

- 學院將聯絡申請人安排入學面試
- 如申請人通過面試，將收到有條件 / 確認取錄

03

### 確認學位

#### 申請人必須 –

- 完成註冊程序
- 支付註冊費

# Postgraduate Scholarships

## 研究生獎學金

| Scholarship Amount (HK\$)* 獎學金金額 (港幣) *   |  |  |   |
|---|--|--|---|
|   | MEd (Full-time)<br>教育學碩士 (全日制)   | MEd (Part-time)<br>教育學碩士 (兼讀制)   | PGDE (ECE)<br>學位教師教育深造文憑<br>(幼兒教育)  |
| Entrance Scholarship<br>入學獎學金   | Bachelor's Degree or Master's Degree with good academic result and interview performance<br>持有良好學士或碩士學位成績，且面試表現優異<br>\$50,000  | Bachelor's Degree or Master's Degree with good academic result and interview performance<br>持有良好學士或碩士學位成績，且面試表現優異<br>\$25,000        | Bachelor's Degree or Master's Degree with outstanding academic result and interview performance<br>持有卓越學士或碩士學位成績，且面試表現優異<br>\$103,500 |
|   | Bachelor's Degree or Master's Degree with outstanding academic result and interview performance<br>持有卓越學士或碩士學位成績，且面試表現優異<br>\$80,000   | Bachelor's Degree or Master's Degree with outstanding academic result and interview performance<br>持有卓越學士或碩士學位成績，且面試表現優異<br>\$40,000 |   |
| Entrance Scholarship for Belt and Road Countries<br>「一帶一路」國家入學獎學金                   | Bachelor's Degree or Master's Degree with good academic result and interview performance<br>持有良好學士或碩士學位成績，且面試表現優異<br>\$119,000   | /  | /   |
|   | Bachelor's Degree or Master's Degree with outstanding academic result and interview performance<br>持有卓越學士或碩士學位成績，且面試表現優異<br>Up to Full Scholarship \$238,000 plus Accommodation and Living Allowance<br>最高可獲全額獎學金 \$238,000 港幣，另含住宿及生活津貼 | /  | /   |
| YCCECE Alumni Entrance Scholarship<br>耀中幼教學院校友入學獎學金                                 | \$95,200   | \$47,600   | /   |
| YCYW Alumni Entrance Scholarship<br>耀中耀華校友入學獎學金                                     | \$71,400   | \$35,700   |   |
| YCYW Staff Entrance Scholarship<br>耀中耀華員工入學獎學金                                      | \$142,800  | \$71,400   |   |
| Consulate General Recognition Scholarship<br>總領事館推薦獎學金                              | Full Scholarship 全額獎學金<br>\$238,000  | /  |   |
| PECERA Member Entrance Scholarship <sup>^</sup><br>太平洋區幼兒教育研究學會成員入學獎學金 <sup>^</sup> | \$71,400   | \$35,700   |   |

<sup>^</sup> This scholarship supports the registered members of the Pacific Early Childhood Education Research Association (PECERA).  
此獎學金旨在支持太平洋區幼兒教育研究學會 (PECERA) 的註冊成員。

\* 2026 / 27 figures for reference only.  
2026 / 27 學年數據僅供參考。

YCCECE reserves the right to change the terms and conditions or withdraw the above scholarships without prior notice.  
In the event of any dispute or disagreement, YCCECE's decision shall be final.

耀中幼教學院保留在不另行通知的情況下更改條款或撤銷上述獎學金的權利。如有任何爭議，耀中幼教學院的決定將為最終決定。





YEW CHUNG COLLEGE  
OF EARLY CHILDHOOD  
EDUCATION  
耀中幼教學院

## YEW CHUNG COLLEGE OF EARLY CHILDHOOD EDUCATION 耀中幼教學院

2 Tin Wan Hill Road, Tin Wan, Aberdeen, Hong Kong  
香港香港仔田灣田灣山道 2 號

### City Campus 市區分校

3 To Fuk Road, Kowloon Tong  
九龍塘多福道 3 號

☎ (852) 3977 9877

☎ (852) 9312 0733

☎ hkyccece

✉ admissions@yccece.edu.hk

📘 Yew Chung College of Early Childhood Education

📷 yccecehk

📺 yccecehk

🌐 YCCECE Yew Chung College of Early Childhood Education



[www.yccece.edu.hk](http://www.yccece.edu.hk)

YCCECE is a member of the Yew Chung Education Foundation (YCEF), both are registered non-profit organisations in Hong Kong  
耀中幼教學院為耀中教育機構成員，兩者均為香港註冊非牟利團體