

## SELF-PRIMING TRASH PUMP

### MODEL / UT NUMBER / DESCRIPTION:

TP2B	UTL1540W	2-INCH TRASH PUMP, BRIGGS & STRATTON ENGINE
TP2BC	UTL1676Y	2-INCH TRASH PUMP, BRIGGS & STRATTON ENGINE, COMPACT ROLL CAGE
TP2H	UTL1601Z	2-INCH TRASH PUMP, HONDA GX160 ENGINE
TP2HC	UTL1677Z	2-INCH TRASH PUMP, HONDA GX160 ENGINE, COMPACT ROLL CAGE
TP2Y	UTL1631Z	2-INCH TRASH PUMP, YANMAR DIESEL ENGINE

## INSTRUCTIONS & PARTS LIST

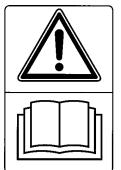
### SYMBOL DEFINITION



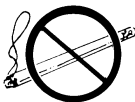
Do not pump flammable materials. Fire could occur.



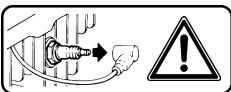
Do not pump hazardous material.



Read your product literature before use.



Do not smoke or bring flame near gasoline.



Disconnect spark plug before performing maintenance, adjustment, lubrication, and storage.

### SAFETY PRECAUTIONS

- This pump is designed for pumping only water. Under no circumstances should it be used for pumping hazardous materials including flammable materials such as gasoline.
- Before start-up, study all of the instructions in this manual. Be sure you thoroughly understand how to operate the pump. Proper preparation, operation and simple maintenance will improve operator safety, pump performance and long unit life.
- Be sure that each person who operates the machine is properly instructed as to its safe operation.

- Always keep the machine and associated equipment clean, properly serviced and maintained according to the instructions in this manual.
- Observe all safety regulations for the safe handling and storage of fuel. Handle fuel in approved vented fuel cans. Do not store fuel supplies in a garage, shed or other areas attached to living quarters. Do not refill the fuel tank in an area attached to living quarters. Do not refill the engine while it is running or hot. Carefully clean up any spilled fuel before starting the engine.
- Do not smoke or bring flame near gasoline.
- Do not operate the pump at shut-off pressure for more than 2 minutes.
- Do not operate this pump if any safety equipment or guard has been removed.
- Never operate the machine in any explosive atmosphere, near combustible materials, or where there is not enough ventilation to carry off the exhaust fumes. **DO NOT** operate pump indoors or in crawl spaces.
- Always be sure the machine is on secure footing and cannot shift to where it might injure someone. Remember that the suction hose on the pump tends to pull the pump towards the liquid source during pumping.
- Keep the immediate area free of bystanders.
- When pulling the starter, be sure that nothing is in a position to be hit by the operator's hand or arm, or the starting rope.
- Do not touch the hot cylinder and muffler area.
- Shut off the engine and disconnect the spark plug wire before working on any part of the machine.
- Long or continuous exposure to high noise levels, such as in the operation of a gasoline engine, may cause permanent hearing impairment or other possible effects. Hearing protection devices are available from your dealer, or can be ordered through him.
- Use only genuine product manufacturer's replacement parts. Failure to do so may cause poor fit and possible injury.
- **BEWARE OF USING THIS EQUIPMENT IN CONFINED SPACES.** Confined spaces, without sufficient fresh air ventilation, can contain dangerous gases. Running gasoline engines in such environments can lead to deadly explosions and/or asphyxiation.

## UNCRATING THE PUMP

Look carefully for shipping damage. If damage of any sort is detected, notify your dealer or the shipper. Remove all shipping blocks and clamps. If the unit is engine-driven, it is very important that it be free to float on its springs.

## DIESEL ENGINE AND 4-CYCLE ENGINE-DRIVEN PUMPS

An engine manual for the specific engine is included. See Engine Manual for fueling recommendations.

Diesel engines and 4-cycle engines have oil-filled crankcases which were drained for shipment and must be refilled before operation of engine.

Read and follow all instructions in this Owner's Manual and the Engine Manual before performing any preparation, operation and maintenance to the pump.

## PRIMING

The pump is self priming to lifts of 25 feet (7.6 m). The time required to prime is greatly affected by the lift. For the shortest priming time, place the pump as close to the water source as possible.

### DO NOT START OR RUN THIS UNIT UNLESS THERE IS WATER IN THE PUMP.

The pump depends upon water for internal lubrication; dry running will quickly ruin the seal. Fill the pump cavity with water at the filler plug or inlet nipple before starting the engine.

## HOSE CONNECTIONS

Make certain that the suction hose connection is air tight. Air leakage at the inlet will prevent the pump from priming and reduce pumping efficiency.

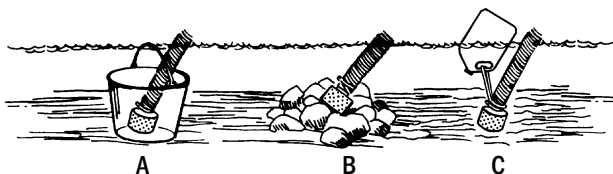
Discharge hose should be used at the outlet. Keep hoses as short as possible. Do not allow hoses to kink or be run over by vehicles. Check suction hoses for broken linings which will interfere with the flow.

If pipe is used, connect a short piece of flexible hose between the pipe and the pump.

## STRAINER

The strainer supplied with this pump is designed to fit a 2-inch hose. The strainer orifices are sized to permit passage of solids that the unit is designed to handle. Do not operate the pump without a strainer or use a strainer with larger holes.

When the suction strainer is likely to clog with debris, prepare a bed of stones on which to rest the strainer (A); tie it in a basket or pail (B); or tie the strainer to a float so that it stays off the bottom (C).

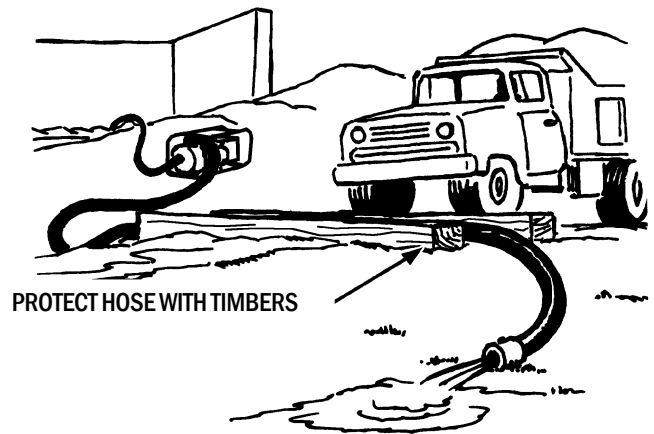


## OPERATING INSTRUCTIONS

1. Use a strainer on the end of the suction line.
2. Make sure that all hose and pipe connections are airtight. An air leak in the suction line may prevent priming and will reduce the lift capacity of the pump.
3. Place the pump as close to the liquid to be pumped as possible. Keep the pump and engine on a level foundation. When the suction hose is hanging down a steep bank or into a hole, the weight of the hose and the liquid in it can pull the pump into the liquid. To prevent "walking" and the possible loss of the pump, tie it down.
4. In freezing weather, always drain the liquid from the pump after use by removing the drain plug. In freezing weather, crank the engine very slowly so you can feel whether the pump is free to run before you crank to start the engine. If the pump is frozen, thaw it out slowly. Do not use fire to thaw the pump.
5. Maximum volume is achieved by:
  - a. keeping hoses as straight as possible, and avoiding kinks and sharp bends.
  - b. making the vertical suction lift (distance from the water being pumped to the pump suction port) as short as possible.
  - c. using correct diameter suction and discharge lines (larger diameter provides lower friction).
  - d. using as few connectors, elbows and adapters as possible.
  - e. maintaining the pump and associated equipment in good operating condition.

**NOTE:** All connections on suction side of pump must be air tight.

6. If flexible hose must be laid across a roadway, protect it with planking. Instantaneous shut-off pressures, applied when a vehicle runs across an unprotected line, can cause damage to the pump and hose.



SOLD BY



**AQUOSIS**  
FLUID SOLUTIONS

info@aquosis.com  
1.877.907.7852

7. The rubber check valve in the pump discharge seals off the pump to retain liquid in the suction line so that the pump will start pumping immediately after short periods of shutdown.
8. Check the level of oil in the engine crankcase before starting.

## IMPELLER & SEAL SERVICING

A loss of pump performance may indicate wear of the impeller or seal. To disassemble the unit for inspection and/or cleaning, loosen the four disconnect handles, swing them aside, and remove the end housing.

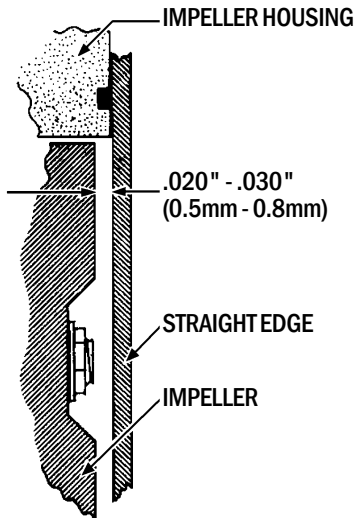
Examine all gaskets for wear or damage that would cause leaks. Replace any faulty gaskets.

If the impeller is severely worn it must be replaced.

1. Turn the impeller nut to the left with a 3/4-inch wrench. Remove the impeller.

Retain the shims below the impeller.

2. Remove the spring and seal body and the spacer from the shaft.
3. To replace a damaged seal seat, pry the assembly out of the impeller housing with a small screwdriver and discard. **CLEAN THE RECESS THOROUGHLY.** When installing a new seal, lightly oil the impeller housing recess and slide the assembly into position.
4. Push the new seal into the recess as far as it will go.
5. Slide the spring and seal body on the shaft.
6. Replace the spacer and the shims removed previously.
7. Screw the impeller onto the shaft.
8. Adjust the clearance by adding or removing shims below the impeller.



Reassemble the pump and turn the engine over by hand. Listen for scraping noises which indicate insufficient impeller-to-wear plate clearance. Adjust, if necessary, by removing a shim.

## LIMITED WARRANTY

Riverside Pump Manufacturing Inc. warrants to the original retail purchaser that this Riverside Pump Manufacturing Product is free from defects in material and workmanship and agrees to repair or replace, at the discretion of Riverside Pump Manufacturing, Inc., any defective Product free of charge within the time period of **Two Years** from the date of purchase.

This warranty is not transferable and does not cover damage resulting from defects other than in material or workmanship, or damage caused by unreasonable use, including the failure to provide reasonable and necessary maintenance. Also, the warranty obligations do not apply to conditions resulting from misuse, alteration or accident. In addition, this warranty does not cover replacement of non-defective parts (such as seals, wear plates and impellers) that may wear and need to be replaced with reasonable use within the warranty period or which may require replacement in connection with normal maintenance.

### SAVE YOUR SALES SLIP

Proof of purchase in the form of your dated sales receipt, cash register slip, etc. showing the serial number and the model of your Product will be required. You must, at your own expense, arrange to deliver or ship the Product for warranty repairs and arrange for pickup or return of the Product after repairs have been made.

**THIS WARRANTY DOES NOT APPLY TO ANY TRADE ACCESSORY OR ENGINE WHICH IS SEPARATELY WARRANTED BY ANOTHER MANUFACTURER AND NOT MANUFACTURED BY RIVERSIDE PUMP MANUFACTURING INC.**

**THIS LIMITED WARRANTY IS IN LIEU OF ALL OTHER EXPRESS WARRANTIES. ANY IMPLIED WARRANTY OF FITNESS FOR A PARTICULAR PURPOSE, MERCHANTABILITY OR OTHERWISE, APPLICABLE TO THIS PRODUCT, SHALL BE LIMITED IN DURATION TO THE DURATION OF THIS LIMITED WARRANTY. RIVERSIDE PUMP MANUFACTURING INC. SHALL NOT BE LIABLE FOR ANY SPECIAL, INCIDENTAL OR CONSEQUENTIAL DAMAGES.**

**SOME STATES DO NOT ALLOW LIMITATIONS ON HOW LONG AN IMPLIED WARRANTY LASTS, SO THE ABOVE LIMITATION MAY NOT APPLY TO YOU. SOME STATES DO NOT ALLOW THE EXCLUSION OR LIMITATION OF INCIDENTAL OR CONSEQUENTIAL DAMAGES, SO THE ABOVE LIMITATION OR EXCLUSION MAY NOT APPLY TO YOU.**

### HOW TO OBTAIN WARRANTY SERVICE

Warranty service can be obtained from a Riverside Pump Manufacturing Inc. dealer or distributor authorized to make warranty repairs. If you need warranty service, check first with the Riverside Pump Manufacturing dealer or distributor from whom you purchased the Product, or call for the name and location of the nearest dealer providing warranty service: 1-800-696-9005 or 1-843-537-5579.

Riverside Pump Manufacturing Inc. will not make any reimbursements for warranty service, except to Riverside Pump Manufacturing Inc. dealers or distributors authorized to make warranty repairs. You must present your sales receipt when making any claim for warranty service.

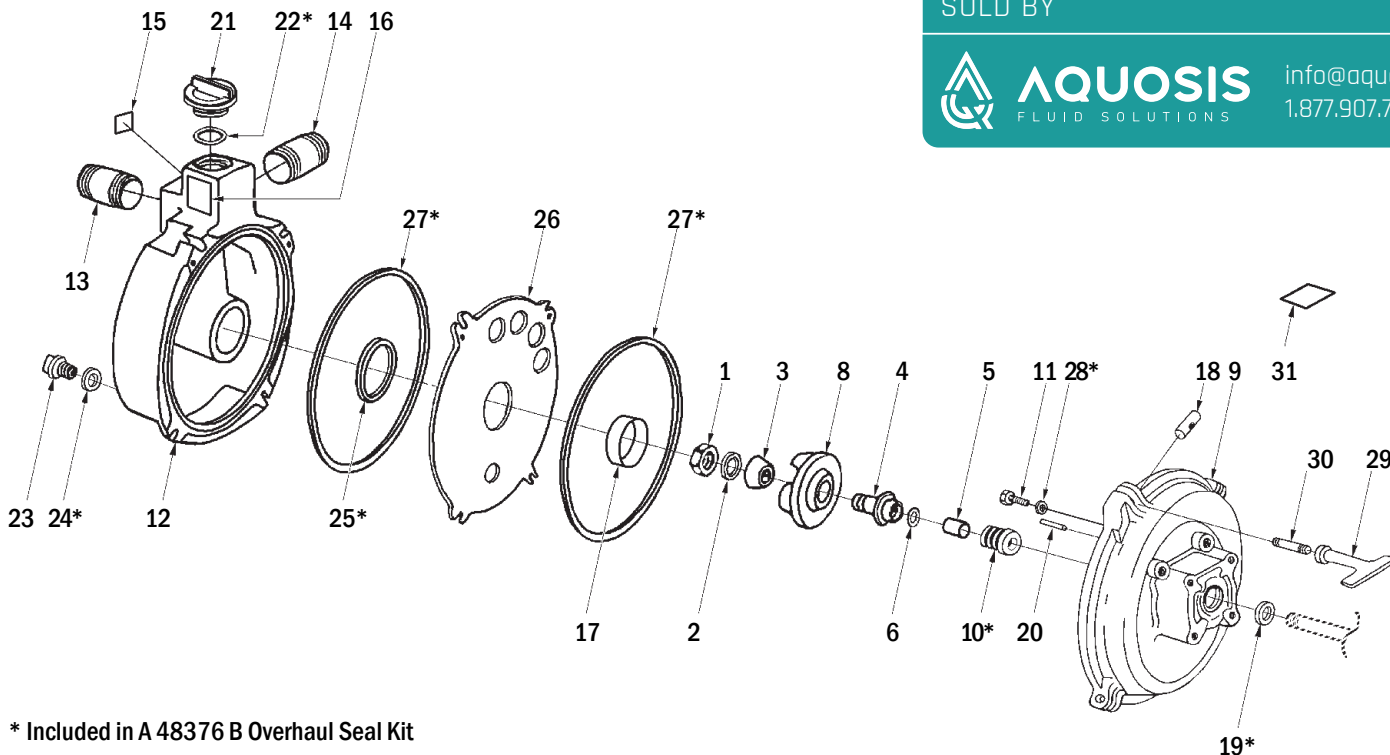
**This warranty gives you specific legal rights, and you may also have other rights which vary from state to state.**

SOLD BY



info@aquosis.com  
1.877.907.7852

**PARTS LIST / LISTE DE PIÈCES DE RECHANGE / LISTA DE PARTES / TEILELISTE**



\* Included in A 48376 B Overhaul Seal Kit

REF.	PART NO.	DESCRIPTION	QTY.
NS	15131	Engine, Vanguard 6½hp (TP2B)	1
NS	00971	Engine, Honda GX160 5½hp (TP2H)	1
NS	15047	Engine, Yanmar Diesel 4.7hp (TP2Y)	1
1	54741	Impeller Nut	1
2	54740	Washer	1
3	54739 A	Impeller Bushing	1
4	54738 1	Impeller Hub (TP2B/H)	1
	54738 2	Impeller Hub (TP2Y)	1
5	50516	Crankshaft Spacer (TP2B/H)	1
	15068	Crankshaft Spacer (TP2Y)	1
6	62882 A	Shim, .010" (TP2B/H)	AR
	62883 A	Shim, .015" (TP2B/H)	AR
	15067	Shim, .010" (TP2Y)	AR
8	54132 1	Impeller	1
9	54131 2A	Impeller Housing	1
10	62713 1A*	Shaft Seal	1
11	80927	Screw, 5/16-24 x 2-1/4" (TP2B/TP2H)	4
	15066	Screw, 8mm x 2-1/4" (TP2Y)	4
12	A 49674	End Housing [includes #13 - 17]	1
13	75663 1	Nipple, 2" x 2"	1
14	54151 1	Nipple, 2" x 3-1/2"	1
15	08970	Decal - Fill Pump	1
16	08971	Decal - Warning	1
17	50912	Sleeve, End Housing	1

**TORQUE SPECS**

REF NO.	Inch Pounds	Newton Meters	Notes:
13	130-145	14.7-16.4	

REF.	PART NO.	DESCRIPTION	QTY.
18	54397	Handle Pivot	4
19	76885 A*	Slinger	1
20	54660	Spring Pin	2
21	A 43971	Filler Plug [includes #22]	1
22	18108*	Gasket	1
23	A 43896	Drain Plug [includes #24]	1
24	59910*	Gasket	1
25	54069*	Gasket, Small	1
26	54136 1A	Wear Plate	1
27	54070 A*	Gasket, Large	2
28	62874*	Sealing Washer	4
29	54550 2A	Disconnect Handle	4
30	54398	Handle Stud	4
31	09081	Decal, Safety Sign (On Engine)	1
NS	54702 A	Strainer, 2"	1

Pump Wet-End Kit: ..... **TP2WE (UT-L1615Z)**  
Includes all pump parts, no engine, no roll cage

**OTHER PARTS & ACCESSORIES:**

PART NO.	DESCRIPTION
A 48376 B	Overhaul Seal Kit
54702 A	Strainer, Suction, 2"
15036	Foot Valve, 2"
L 19956	Owner's Manual
A 15060	Spanner Wrench Kit, 2"
A 15043	Dolly Kit
A 15022	Roll Cage Kit (TP2B/H)
15217	Shaft Seal, Viton

SOLD BY



info@aquosis.com  
1.877.907.7852

**PARTS LIST / LISTE DE PIECES DE RECHANGE / LISTA DE PARTES / TEILELISTE**

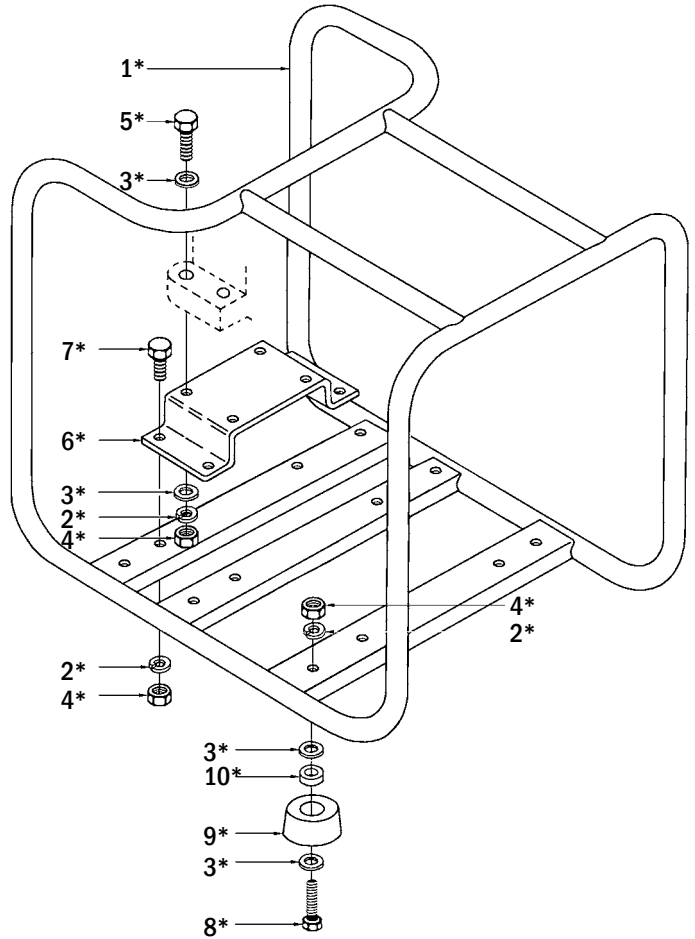
**ROLL CAGE: TP2B • TP2H • TP2Y**

**TORQUE SPECS**

REF NO.	Inch Pounds	Newton Meters	Notes:
5	205-225	23.2-25.4	17-18.8 Lbs.-Ft.
7	205-225	23.2-25.4	17-18.8 Lbs.-Ft.
8	130-145	14.7-16.4	

\* Included in A 15022 Roll Cage Kit  
(Kit includes additional items for S2 models)

REF.	PART NO.	DESCRIPTION	QTY.
*1	A 08096	Roll Cage	1
*2	83002	Lock Washer, 5/16"	12
*3	84032	Flat Washer, 5/16"	16
*4	81162	Hex Nut, 5/16-18	12
*5	80087	Hex Head Cap Screw, 5/16-18 x 1-1/2"	4
*6	08101	Engine Support (TP2B/TP2H)	1
	15049	Engine Support (TP2Y)	1
*7	80083	Hex Head Screw, 5/16-18 x 3/4"	4
*8	80088	Hex Head Screw, 5/16-18 x 1-1/4"	4
*9	48789	Rubber Foot	4
*10	49733	Foot Spacer	4

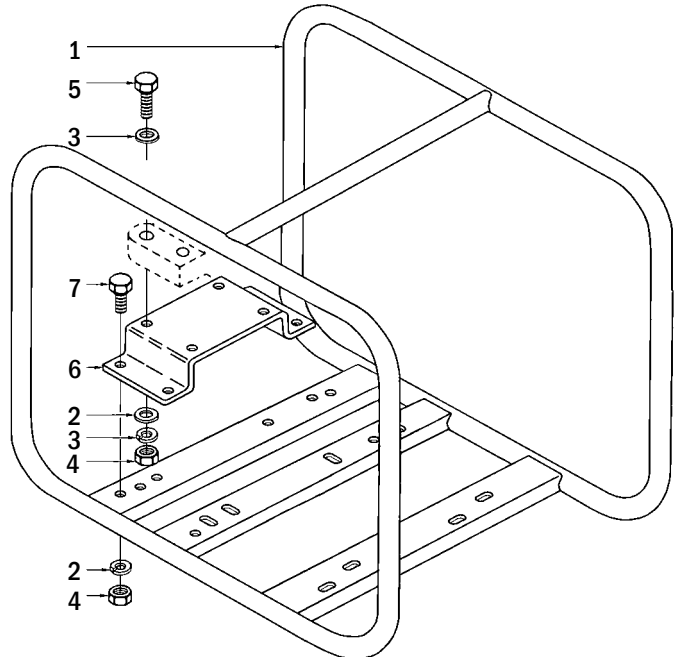


**ROLL CAGE: TP2BC • TP2HC**

**TORQUE SPECS**

REF NO.	Inch Pounds	Newton Meters	Notes:
5	205-225	23.2-25.4	17-18.8 Lbs.-Ft.
7	205-225	23.2-25.4	17-18.8 Lbs.-Ft.

REF.	PART NO.	DESCRIPTION	QTY.
1	A 15203	Roll Cage	1
2	83002	Lock Washer, 5/16"	8
3	84032	Flat Washer, 5/16"	8
4	81162	Hex Nut, 5/16-18	8
5	80087	Hex Head Cap Screw, 5/16-18 x 1-1/2"	4
6	08101	Engine Support	1
7	80083	Hex Head Screw, 5/16-18 x 3/4"	4



SOLD BY



info@aquosis.com  
1.877.907.7852