


*Teachers
Inspire
us all.*



 SANDRA BELL SCULPTURE

DCU Ollscoil Chathair
Bhaile Átha Cliath
Dublin City University

*Teachers
Inspire
us all.*



SANDRA BELL SCULPTURE

DCU

Ollscoil Chathair
Bhaile Átha Cliath
Dublin City University

A photograph of a modern building with large glass windows and a tree in the foreground. The building has a reddish-brown facade and is partially obscured by the branches of a tree with some green and yellow leaves. The sky is blue with some light clouds. The text is overlaid on a semi-transparent white box in the center of the image.

The “Teachers Inspire” Project...

is an Ireland wide initiative that seeks to recognise the transformative role teachers play in our lives and in our communities.



The “Teachers Inspire” Sculpture...





**...was commissioned by
Dublin City University (DCU)
and generously sponsored by
Mr. Dermot Desmond.**





The project



was created...





Designed and created by Sandra Bell, this 2200mm high, cast bronze sculpture was positioned outside the library of Saint Patrick's College in 2022.

The sculpture represents a teacher and a student. The pair view a book, made in the form of a bird in flight. These features symbolize the essence of learning, knowledge gives us wings to fly and thought to soar.

to honor...



...the Teachers.

Teachers Inspire Ireland provides a living, growing resource of stories to share, celebrate, and remind us of the positive difference teachers can make.

Teachersinspire.ie



Teachers Inspire

teachersinspire.ie



Teachers Inspire Ireland is an Ireland wide initiative that seeks to recognise the positive role...

The origins...



Beginning in 2019, [Teachers Inspire](#) was curated by acclaimed author Louise O'Neill. Run by Dublin City University, the organization is generously supported by the philanthropic donation of Dermot Desmond. Teachers Inspire campaign

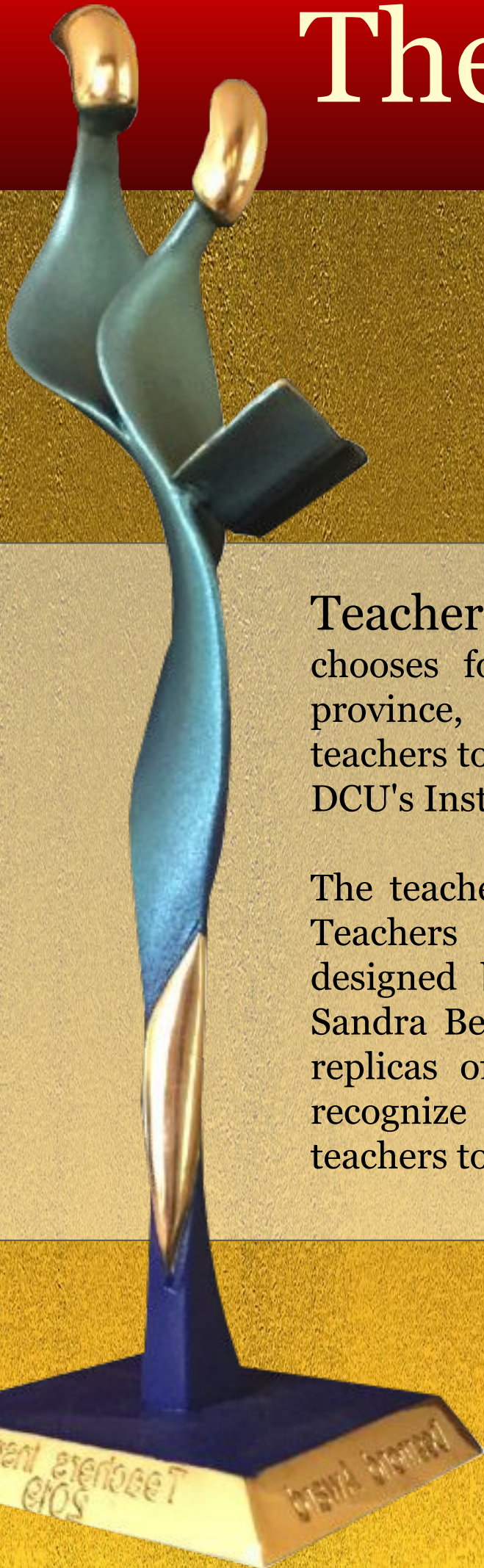


[https://cms.megaphone.f...](https://cms.megaphone.fm/cms.megaphone.fm)
cms.megaphone.fm

TEACHERS
INSPIRE
IRELAND
2022

brings to light inspirational stories from all across the country through the [Teachers Inspire podcast](#). This celebration sparks a conversation about the importance of teachers and a greater public appreciation of their passion and care.

The gala...



Teachers Inspire annually chooses four, one from each Irish province, of the most inspiring teachers to celebrate at a gala event at DCU's Institute of Education.

The teachers are presented with the Teachers Inspire Desmond Award, designed by contemporary sculptor Sandra Bell. The cast bronze award, replicas of the full sized sculpture, recognize the contributions of teachers to learning and Irish society.





The inspiration...

DCU launched Teachers Inspire with the support of businessman and philanthropist Dermot Desmond in collaboration with former president of DCU, Professor Brian Mac Craith. Dermot Desmond, benefactor of The Desmond Chair in Early Childhood Education at DCU's Institute of Education, also

had relatives that attended the training college at DCU. Mr. Desmond believed that the value of Ireland's extraordinary teachers was not fully recognised. With DCU, he sponsored a nationwide campaign to pay tribute to teachers who have made a positive impact on the lives of their students.





The collaboration...

Dermot Desmond said to Brian Mac Craith, “I felt that teachers were underappreciated and undervalued in society. In fact, I believe that education is the best investment any government can make...So I really want the teachers to be recognised because teachers played a profound impact on my life - in advising and mentoring, educating, and passing on knowledge. Their care and loving consideration is a real boon to any student, no matter what age...I want [teachers] honored and I’ve played a small part in contributing to this

programme...I congratulate all the recipients, all those who have been nominated, because you are the heroes in our society.” Among other initiatives, the programme commissioned the “Teachers Inspire” sculpture and annually awards teachers for their outstanding achievements. Teacher training at DCU plays a central role in educating future generations of teachers. A permanent sculpture has been erected on DCU campus in recognition of all those who participate and support the “Teachers Inspire” programme.





The artist...

Sandra Bell, one of Ireland's best-known contemporary sculptors, based in Killin, near Dundalk, Co. Louth, was commissioned by DCU to create a significant new public sculpture and accompanying awards inspired by the work of teachers.

The sculpture was placed in the grounds of DCU's St. Patrick's Campus in Drumcondra as a permanent symbol of DCU's Teacher Inspire Ireland initiative, which is focused on highlighting the enormous contribution made by teachers in Irish society.

Sandra Bell makes sculpture in cast bronze and fabricated steel. Her sculpture is best known for her meditations on the human form and curvaceous abstractions.

The artwork has Celtic and Classical influences with themes of 'Harmony' and 'Balance'. Soft curves and simple lines create undulating surfaces that play in the light. Negative spaces hold tension with voluptuous shapes, challenging the viewer to interact. To view her work, visit sandrabell.com



Sandra Bell Sculpture

sandrabell.com



Sandra Bell makes sculpture in cast bronze and fabricated steel. The themes of 'Harmony' and 'B...



Announcing details of the sculpture today (21.08.19), Professor Brian MacCraith, President of DCU, said: “Following a competitive process, Sandra Bell has been commissioned to create this Teachers Inspire sculpture. We felt her winning proposal captured the essence and vision of the overall

Teachers Inspire Ireland initiative. “We look forward to working with Sandra in the coming months to create a piece of public art that symbolises the hugely valuable contribution of teachers across Ireland, and the transformative role they play in the lives of their students and wider communities.”

The commission...

SANDRA BELL SCULPTURE



Sandra Bell said: “It is a great honour to be part of a project that gives recognition to the wonderful work our teachers do. My sculpture will play on the theme of light because our teachers have been an inspiration and a leading light in our lives for so many years. My sculpture also represents the nurturing of a young mind,

depicting a teacher and a student sharing a book, [symbolizing] the light of inspiration and learning from within...I am excited to get started on this project, and I look forward to unveiling the finished sculpture early next year – as a permanent symbol of the hugely inspirational work done by teachers every day.”



The process...

The sculpture was created by Sandra Bell over a period of six months and was unveiled by DCU in May of 2021 as part of the launch of the second year of Teachers Inspire. It is a figurative cast bronze sculpture, incorporating high polish bronze features.



Bronze is the most lasting of all mediums through which artistic creation is expressed. Its beauty is enhanced with age. The “lost wax” method is a meticulous process involving much interaction between the sculptor and the foundry.

The maquette

The central themes of the “Teachers Inspire” sculpture is the essence of learning and the relationship between teacher and student. Through a series of sketches, Sandra Bell created a melding of two figures, united in the purpose of sharing knowledge.



design...

Once the drawing was complete, the artist then created a model in wax and further honed the design. In manipulating the curving surfaces, Sandra Bell encouraged light to reflect from the book and resonate from one figure to the other evoking the exchange of wisdom and understanding.



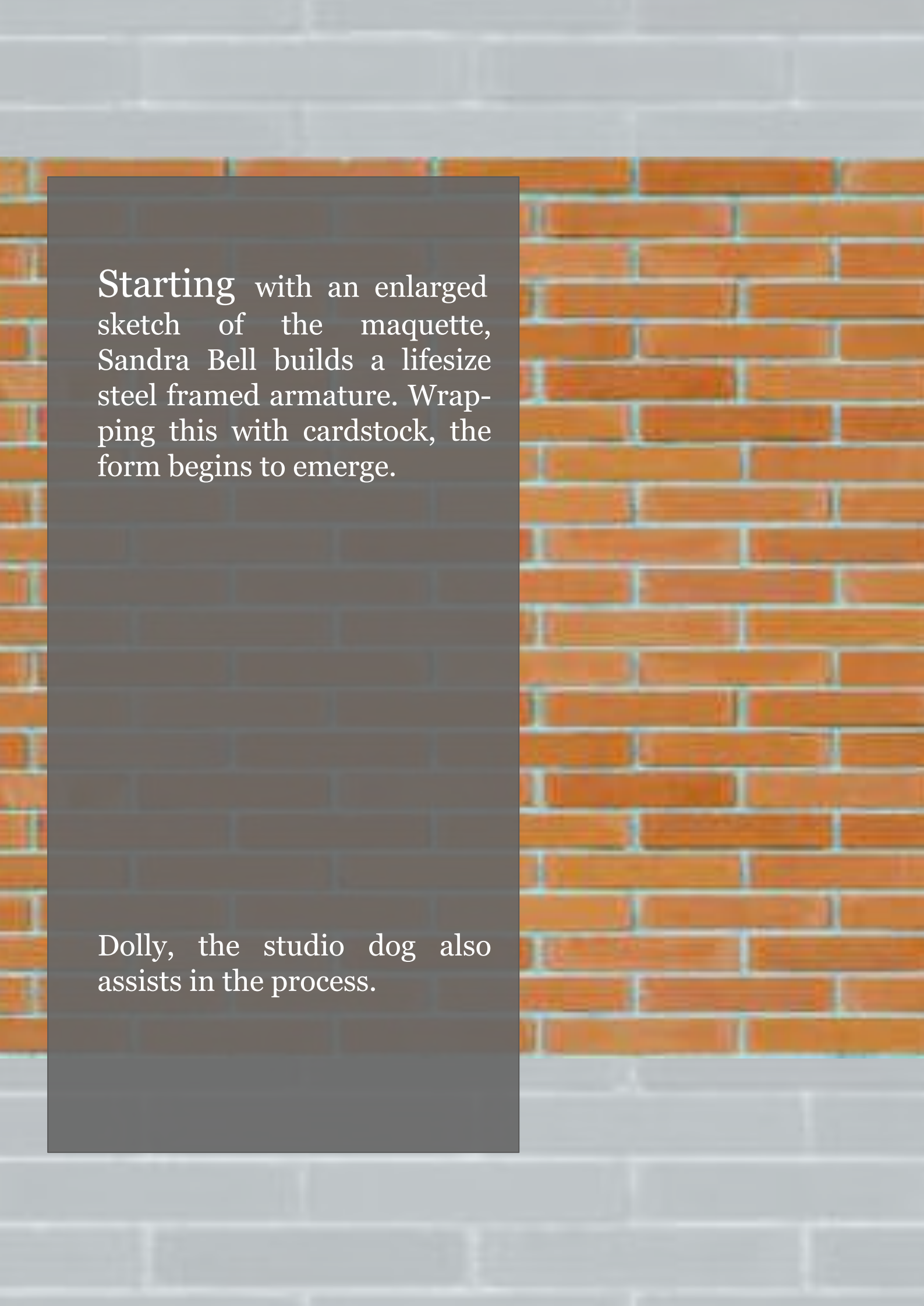
123.63 mm

67.60 mm

12.70 mm

1.00 mm

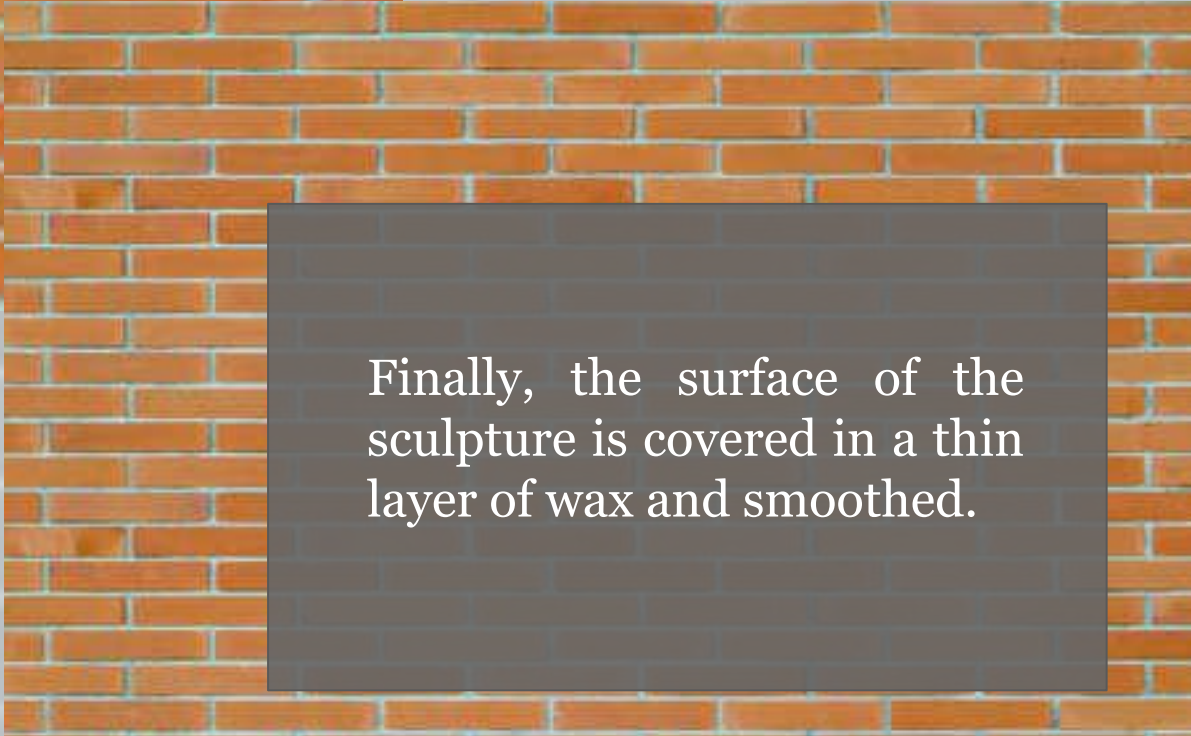
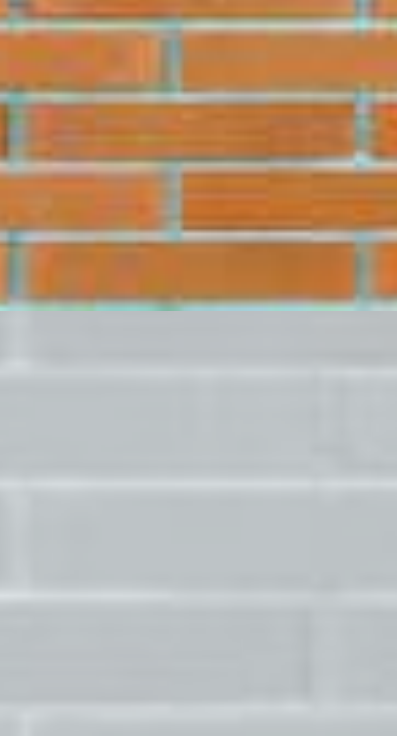
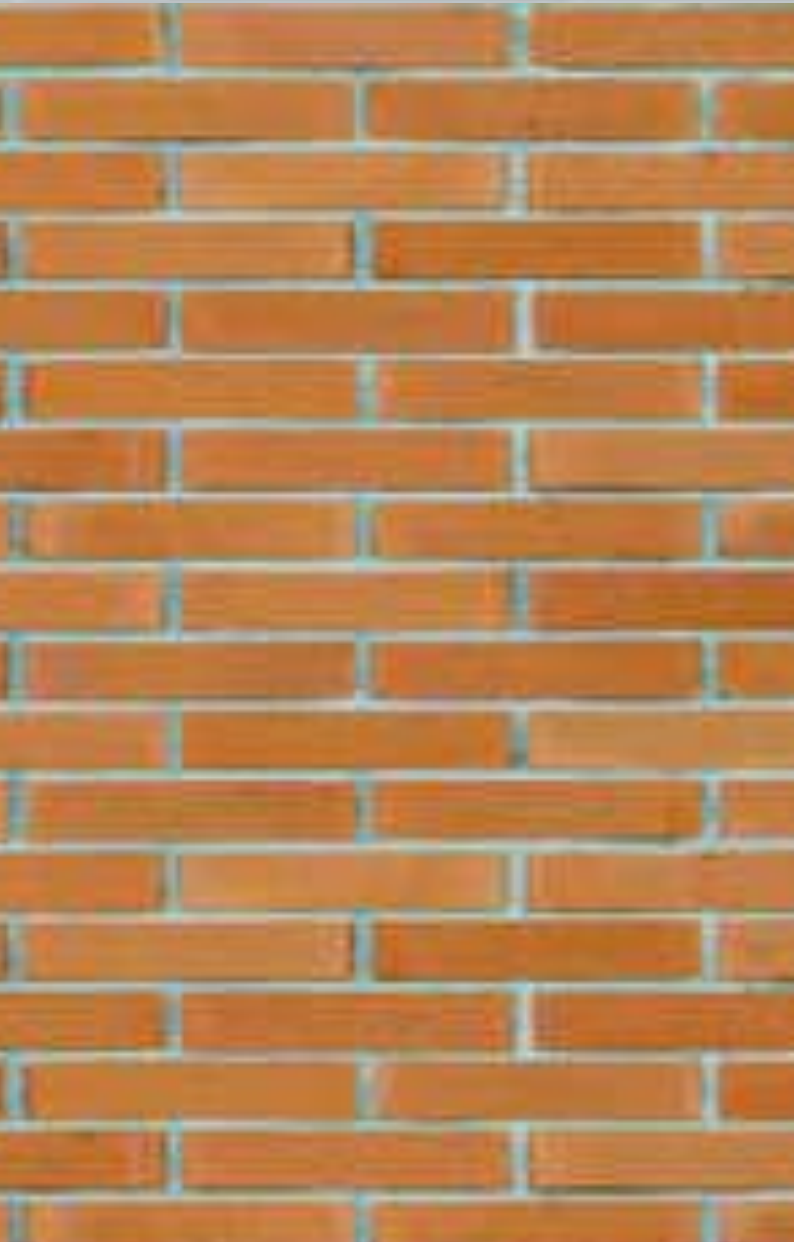




Starting with an enlarged sketch of the maquette, Sandra Bell builds a lifesize steel framed armature. Wrapping this with cardstock, the form begins to emerge.

Dolly, the studio dog also assists in the process.

The scaling up...



Finally, the surface of the sculpture is covered in a thin layer of wax and smoothed.

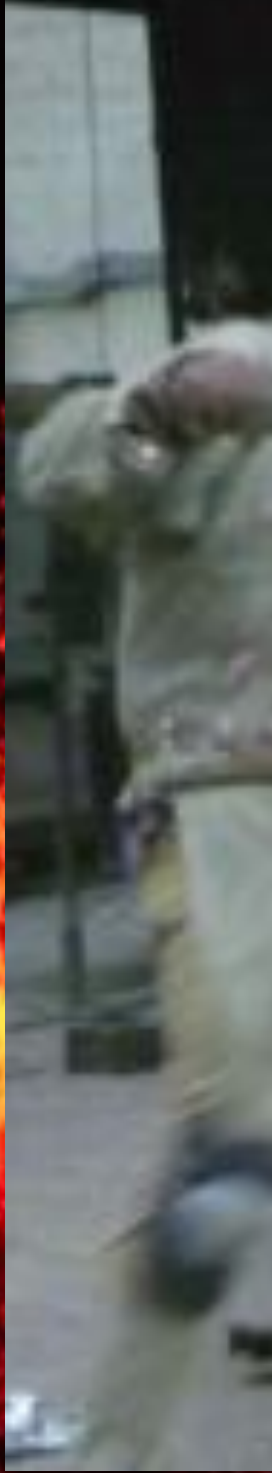
A fiberglass and rubber mould is made of the enlarged piece. Wax is brushed or poured into the rubber mould and a positive copy in wax is produced. When the wax has hardened, Sandra Bell removes the wax from the mould and refines or “trues” the piece. Wax tubing is attached to the wax at various points



to serve as air vents and “gates.” These gates will eventually provide access for molten metal. The wax is then dipped into the “slurry” mixture, resembling a thin cement, and coated in a special sand. This process is called ceramic shell. This step is repeated many, many times until a thick coating has built up around the wax.

The mould...

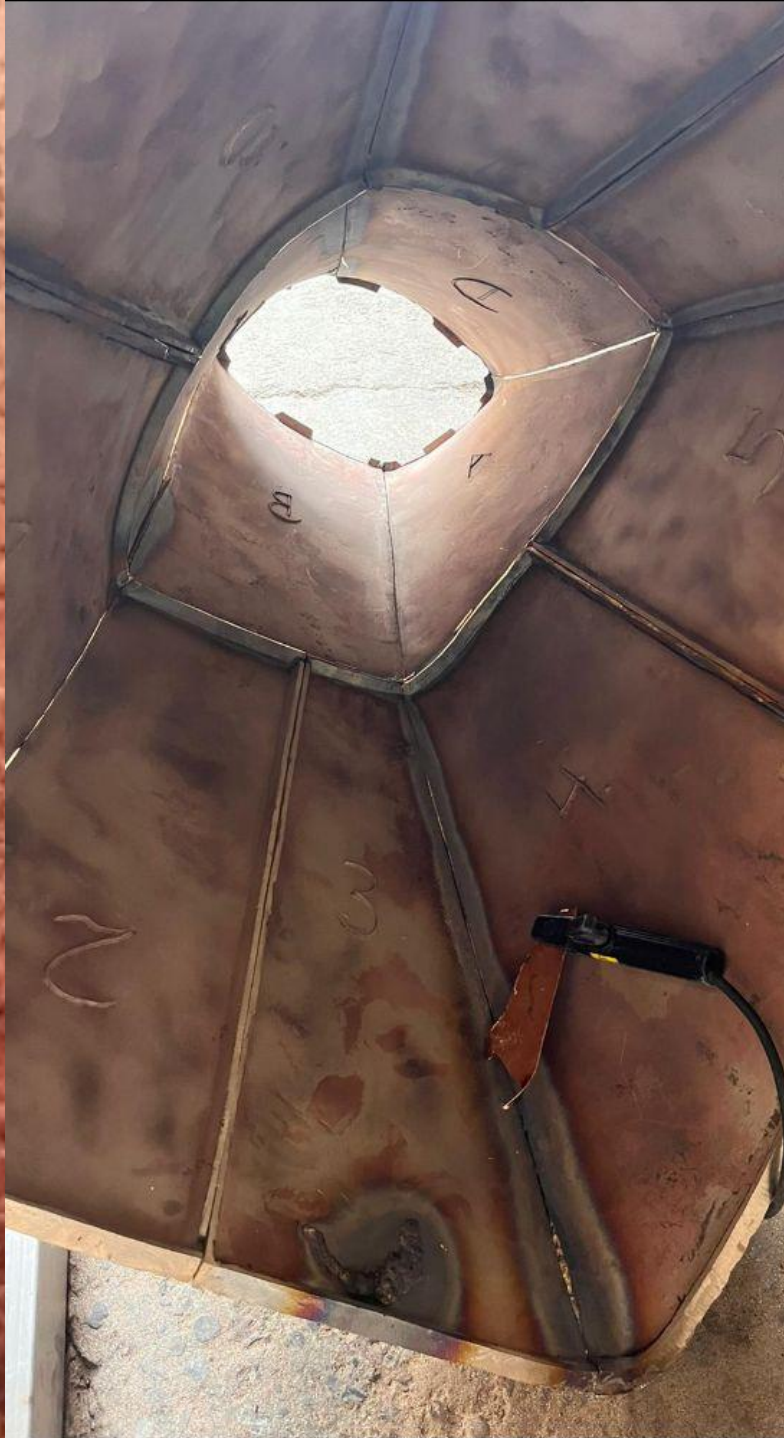




The bronze pour...



At the Bronze Casting Foundry, the cement-like mould is then put into a hot kiln (2200 degrees) where the wax sculpture is melted away (lost) and a perfect imprint is left within the mould. Molten bronze is then poured into the negative mould. The excess bronze flows into the air vent tubing.

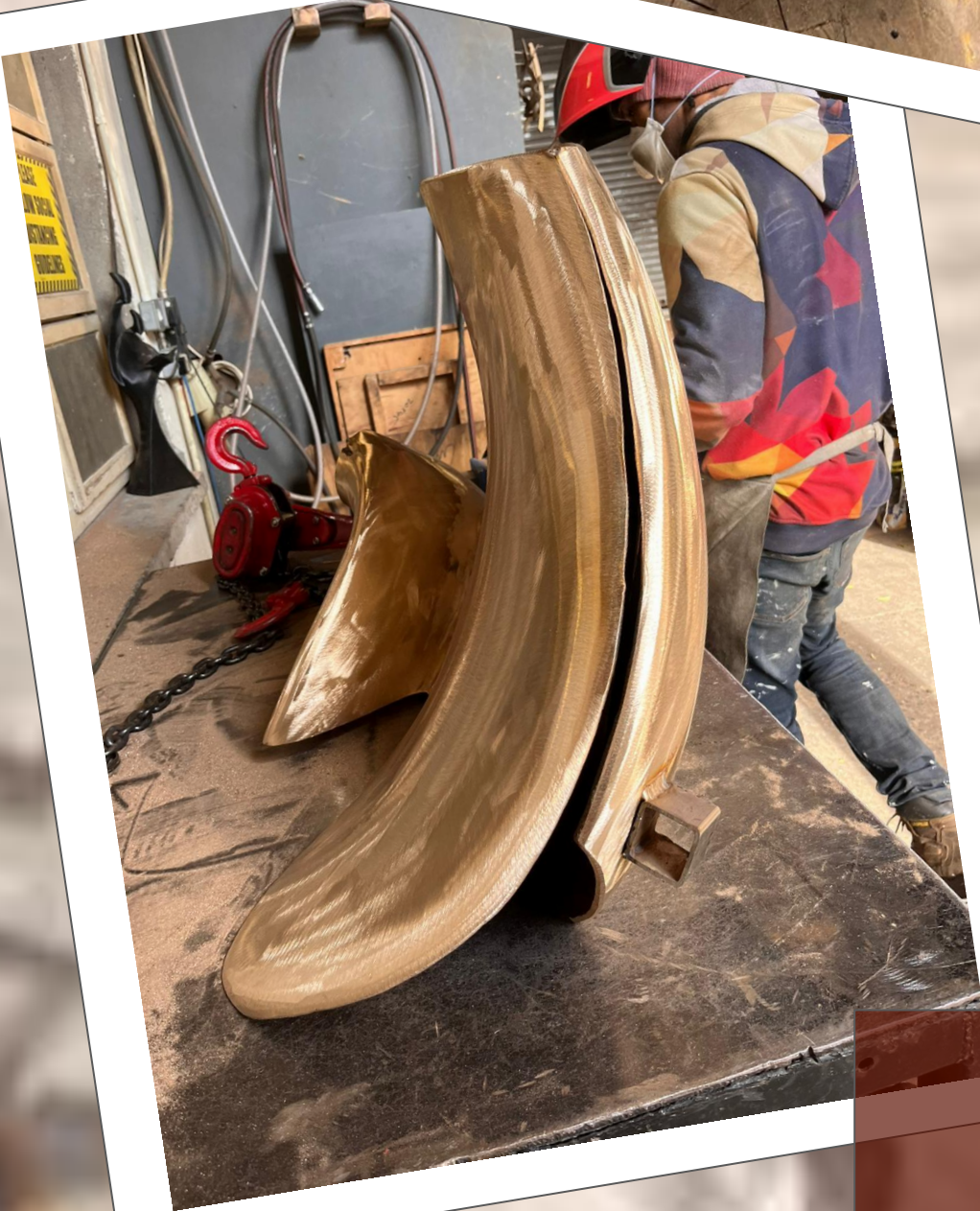


The welding...

A large, rusted metal sculpture stands in a workshop. The sculpture is a tall, conical form with a flared top, composed of several large, dark brown metal plates welded together. The background shows a brick wall, a window, and a workbench with various tools and equipment. A sign on the wall reads: "IF WE TAKE CARE OF THE MOMENTS, THE YEARS WILL TAKE CARE OF THEMSELVES. MARIA EDGEWORTH".

IF WE TAKE CARE OF
THE MOMENTS, THE
YEARS WILL TAKE
CARE OF THEMSELVES.
MARIA EDGEWORTH

When cool, the ceramic shell mould is chipped away by technicians, leaving behind the bronze casting. Normally a large sculpture is cut into several pieces in the wax stage and welded together in the finished bronze.





Sandblasting, grinding, and polishing follow. For a patinated finish, the sculpture is reheated and a patina is applied by hand. The patina is similar to the natural aging process of oxidation, but accelerated through the application of different chemicals for different colours. After the desired colouration is obtained, the bronze is then waxed or lacquered to preserve the colour the artist intended.

The finishing...

The unveiling...



Dec 02, 2021

“A new sculpture, Teachers Inspire by sculptor Sandra Bell, was unveiled at Dublin City University’s St. Patrick’s campus today. The piece was unveiled by Professor Daire Keogh, President of Dublin City University and Mr. Dermot Desmond, whose generous philanthropic donation sup-

ports Teachers Inspire.” Speaking at the unveiling of the sculpture, Professor Keogh said, “This beautiful piece elegantly captures the spirit of the Teachers Inspire initiative. Sandra Bell’s creation is a very welcome addition to DCU’s historic St Patrick’s campus, which will be a focus




for student celebration and reflection.”

Professor Anne Looney, Executive Dean of Dublin City University’s Institute of Education said, “Teaching and teachers have been under extraordinary pressure in the past 20 months, no more so than right now. More than a thousand student

teachers from the DCU Institute of Education are currently working as substitute teachers in classrooms across the country. They will soon be joined by our early childhood specialists heading to support early learning and care settings struggling to provide a service for our youngest children.”



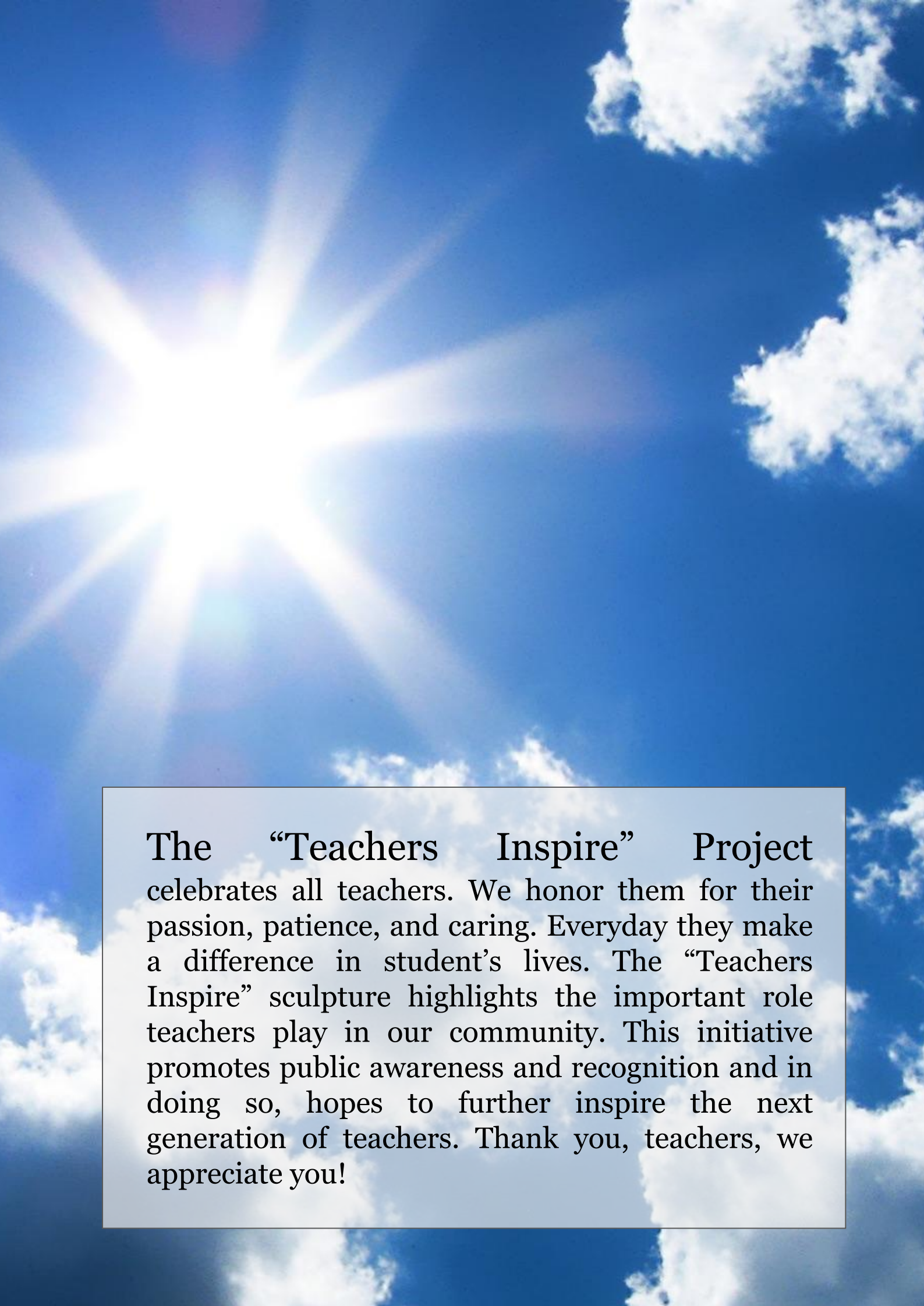
A woman with white hair and glasses, wearing a white coat and a patterned shawl, stands outdoors in front of a building. The background shows a paved area, a grassy field, and a building with a white facade and a dark roof. The sky is blue with white clouds.

Artist Sandra Bell said at the unveiling, “It has given me great pleasure to create this Teachers Inspire sculpture. Cast in bronze, [it was] commissioned by Dublin City University and generously sponsored by Mr. Dermot Desmond. It honours our teachers and acknowledges their dedication and great work.”

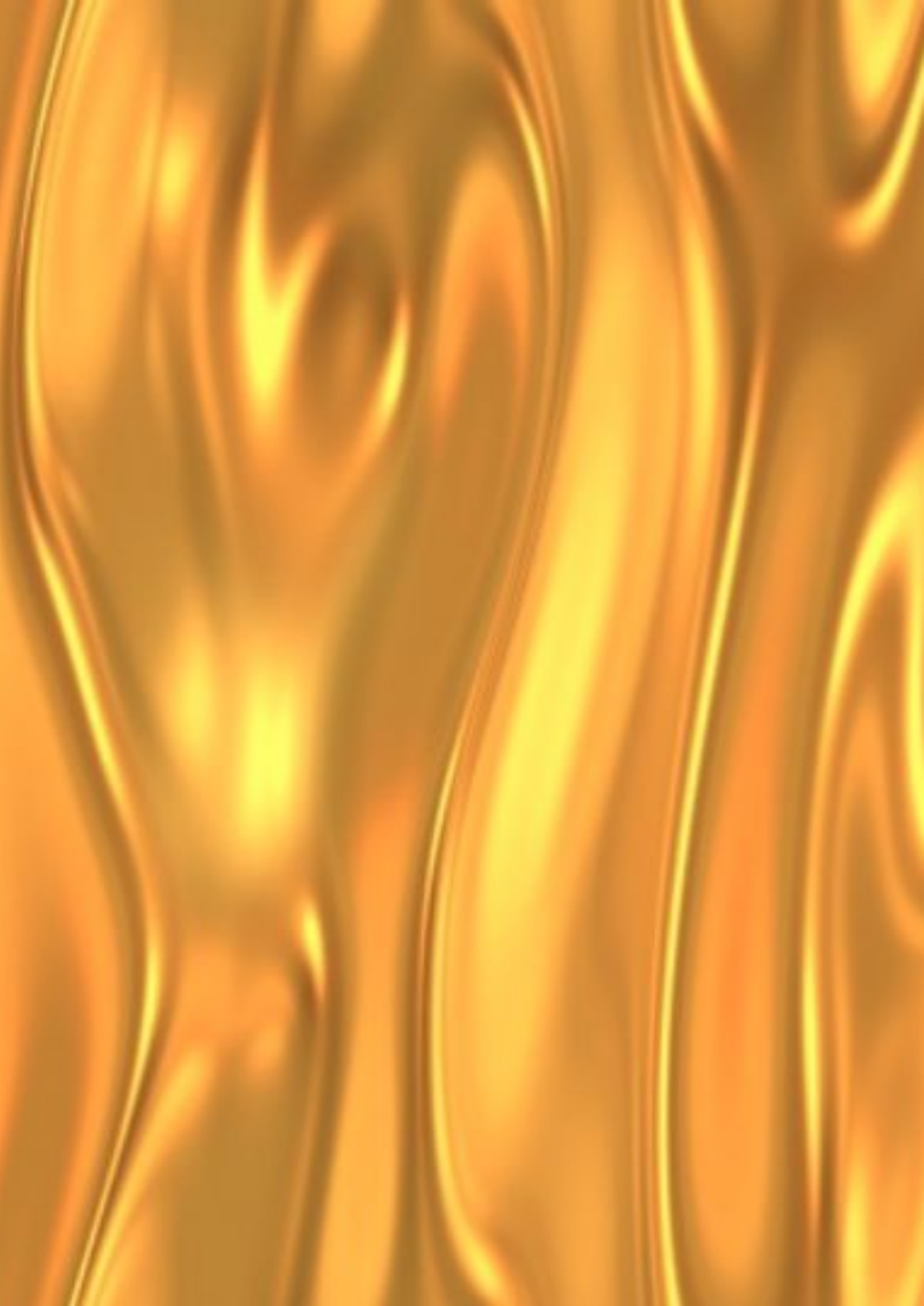


Clockwise: Una Smith, Claire Duffy, Donna Fitzgerald and Liz Kett





The “Teachers Inspire” Project celebrates all teachers. We honor them for their passion, patience, and caring. Everyday they make a difference in student’s lives. The “Teachers Inspire” sculpture highlights the important role teachers play in our community. This initiative promotes public awareness and recognition and in doing so, hopes to further inspire the next generation of teachers. Thank you, teachers, we appreciate you!





TEACHERS
INSPIRE

JOIN THE
CONVERSATION
[TEACHERSINSPIRE.IE](https://teachersinspire.ie)

