

VYVA
 INDOOR & OUTDOOR
 CONTRACT FURNITURE FABRICS

SEGU - FRECKLE - PUKKA

Indoor - Outdoor



NL

Een vernieuwende, trendy collectie kunstleer. Een aantal van de supersterke, kleurvaste en makkelijk te reinigen dessins heeft de aantrekkelijke uitstraling van geweven textiel en is verkrijgbaar in modieuze, zoete 'ice-cream kleuren'. De collectie is geschikt voor de stoffering van meubels in de interieurs van zowel particulieren als horeca- en zorgprojecten, omdat deze aan alle eisen op het gebied van veiligheid en hygiëne voldoet. Zo zijn de materialen antibacterieel, anti-allergeen en brandvertragend.

EN

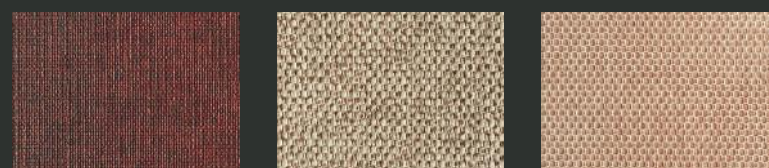
An innovative, trendy collection of artificial leather. Some of the super strong, colourfast and easy to clean designs have the attractive appearance of woven textiles and are available in fashionable, sweet 'ice-cream colors'. The collection is suitable for the upholstery of furniture in the interiors of both private and hospitality and health care projects, because it meets all requirements in terms of safety and hygiene. The materials are antibacterial, anti-allergenic and fire-retardant.

CHARACTERISTICS

Composition:	Topcoat: 85% Vinyl Backing: 15% CO
Weight:	800 gr / m ²
Thickness:	1.20 - 1,40 mm
Roll Width:	140 cm
Roll Length:	25 meter
Abrasion resistance:	>150.000 cycles (Martindale)
Light fastness:	> 6 ISO 105-B02 (Blue Scale)
Colour fastness to artificial weathering:	> 7 ISO 105-B04 (Blue Scale)
Colour fastness to sea water:	4-5 Grey Scale ISO 105-E02
Colour fastness to chlorinated water:	4-5 Grey Scale ISO 105-E03
Colour fastness to saliva:	4-5 Grey Scale DIN 53160-1
Colour fastness to alkaline perspiration:	4-5 Grey Scale ISO 105-E04
Colour fastness to acid perspiration:	4-5 Grey Scale ISO 105-E04
Resistance ammoniac solution (urine):	Good
Resistance to artificial blood:	Good
Bleach (4,5% chlorine) resistance:	No change
Ethyl alcohol 96% vol. resistance:	4-5 Grey Scale DIN 54021
Bacterial Resistance:	JIS Z 2801 Sanitized
Fungal Resistance:	EN ISO 846 A Sanitized

Flame Retardancy:	EN 1021, Part 1 & 2 NF P 92-507 (M2) BS 5852 (Crib 5) DIN 4102 (B2)	IMO 2010 FTP Code Part 8 UNI 9175 1.IM FMVSS 302 <100
-------------------	--	---

SEGU - FRECKLE - PUKKA



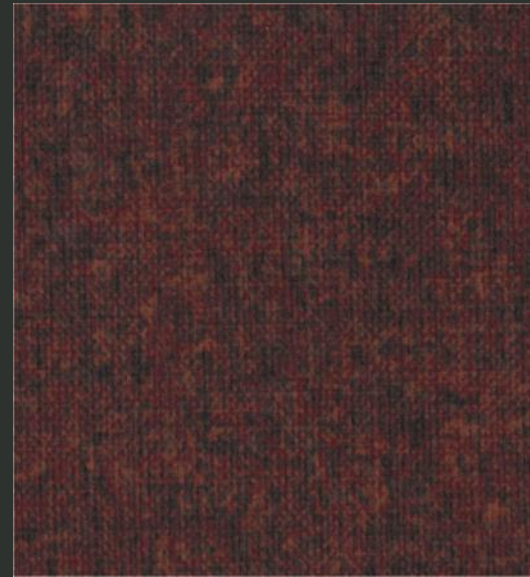
BY VYVA FABRICS
 Indoor - Outdoor



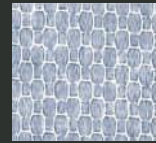
INFO@VYVAFABRICS.NL WWW.VYVAFABRICS.NL

SEGU - FRECKLE - PUKKA

Indoor - Outdoor



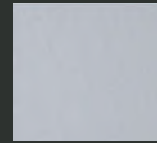
SEGU 5002 SE
RED SNAPPER



5023 PU
LAVENDER



5009 SE
PEARL



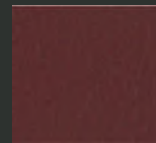
454 366
GLACIER



5014 SE
FLAMINGO



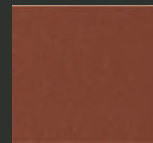
FRECKLE 5025 FR
GRAPEFRUIT



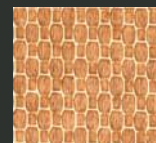
454 351
PORT



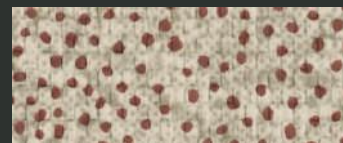
PUKKA 5022 PU
RHUBARB



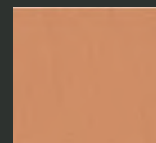
454 297
RUSSET



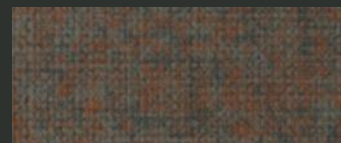
5018 PU
TANGERINE



FRECKLE 5028 FR
CHOCOLAT



454 345
APRICOT



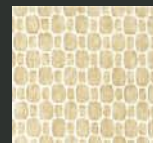
SEGU 5003 SE
SHORE



SEGU 5010 SE
CORAL



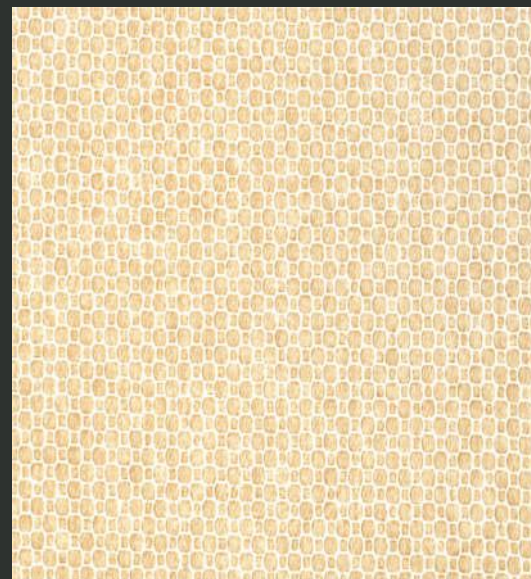
454 336
BRANDY



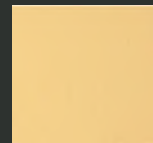
5016 PU
VANILLA CHAI



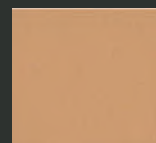
5021 PU
ROSEHIP



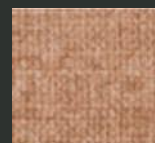
PUKKA 5015 PU
PEACH



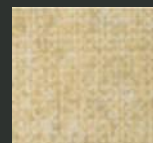
454 361
MELON



454 354
RUM SHERBET



5011 SE
SALMON



5007 SE
SAND



SEGU 5008 SE
SCALLOP SHELL

SEGU - FRECKLE - PUKKA

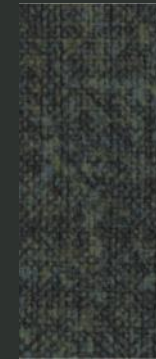
Indoor - Outdoor



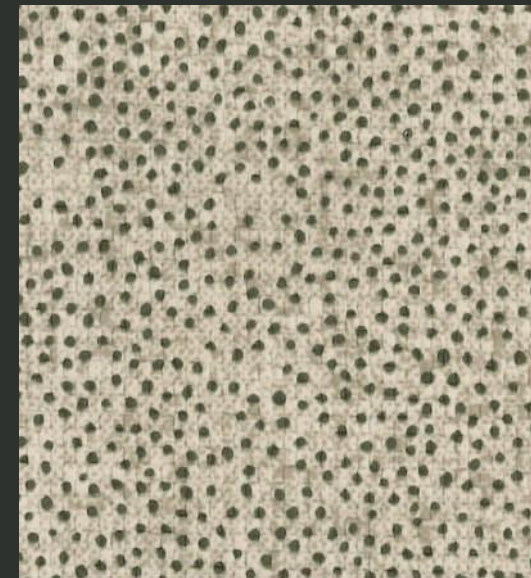
SEGU 5004 SE
BAY



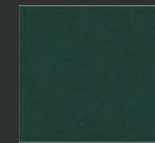
5026 FR
EUCALYPTUS



5005 SE
REEF



FRECKLE 5027 FR
OATMEAL



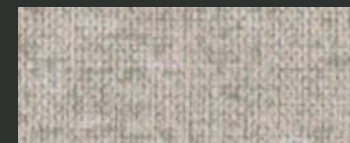
454 296
HUNTER GREEN



454 316
SLATE



5000 SE
HARBOUR



SEGU 5006 SE
OYSTER



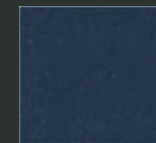
5001 SE
DEEP WATER



PUKKA 5019 PU
JASMIN



454 329
NATURAL



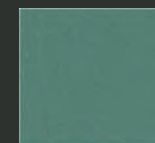
454 292
ROYAL BLUE



5017 PU
CHAMOMILLE



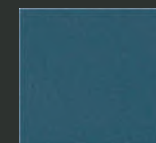
FRECKLE 5024 FR
BLUEBERRY



454 317
JADE



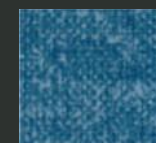
SEGU 5013 SE
LAGOON



454 346
COLONIAL BLUE



FRECKLE 5029 FR
SPINACH



5012 SE
PACIFIC



PUKKA 5020 PU
FENNEL