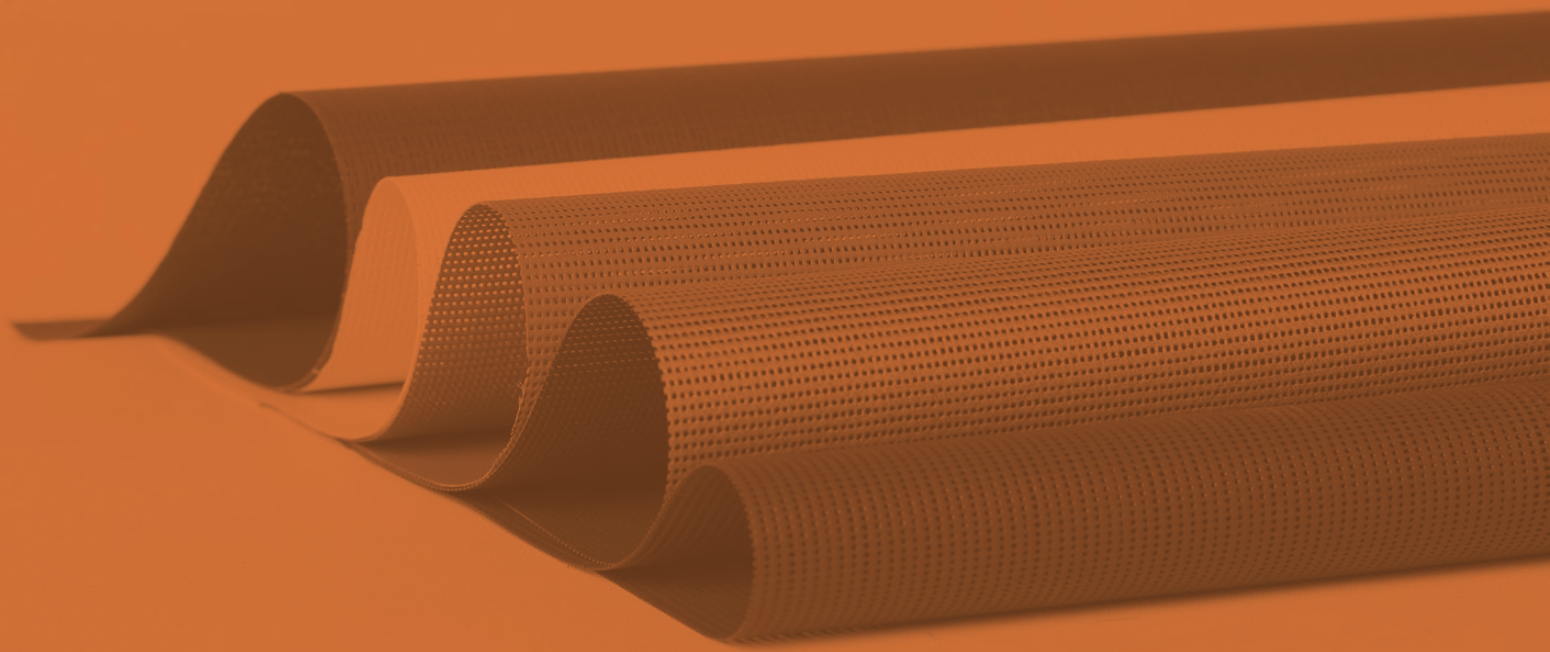




RIGEL

Fabric Catalogue



Front

Back

008-002

Linen | White

002-002

White

008-008

Linen Color

007-007

Pearl Grey

033-033

Sandstone Color

047-047

Anthracite Grey

001-001

Grey

001-002

Grey | White

033-001

Oyster Shell

010-010

Charcoal Grey

Copaco

Fabric Collection



Woven with coated fiberglass yarns, Copaco fabrics offer an extremely durable and functional collection ideal for outdoor use. It has a very wide range of fabrics and colors to perfectly match any space. Adding a decorative touch to countless homes and offices around the world, Copaco fabrics bring a whole new dimension to high energy savings and light management.



Fire Resistant

5%

Openness Factor

3.5m

Width

Copaco Specifications

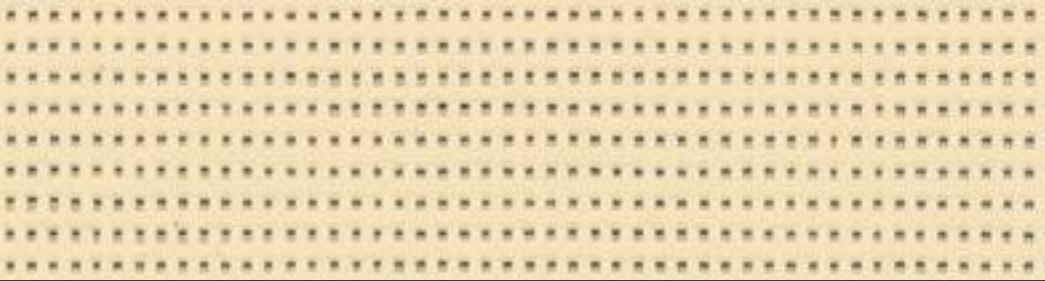
	Technical Specifications / Properties	Standards
Openness Factor	5%	NBN EN 410
Weight	525 g/m ²	NF EN 12127
Thickness	0.74 mm	NF EN 12127

	Roll Length
Length	Standard 50 m / 30 m for widths greater than 270 cm

	Physical Properties
Resistance / Durability (warp / weft)	18 yarn/cm / 14 yarn/cm

	Fire Resistance / Flame Retardancy
Euroclass	C-s3, d0

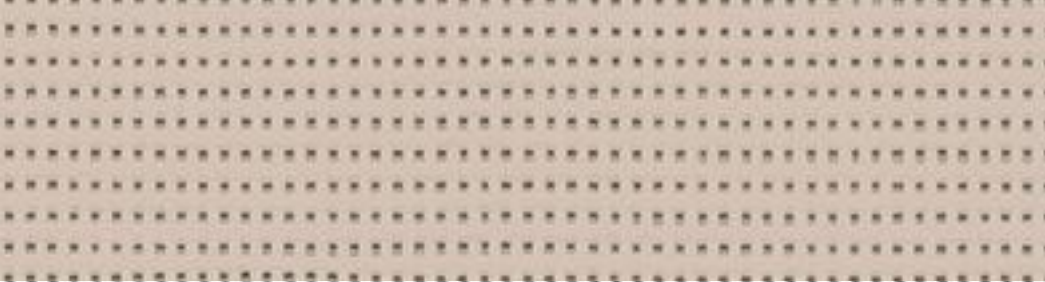
UNE-EN 13501-1:2007



86-2175
Champagne



86-2047
Anthracite Grey



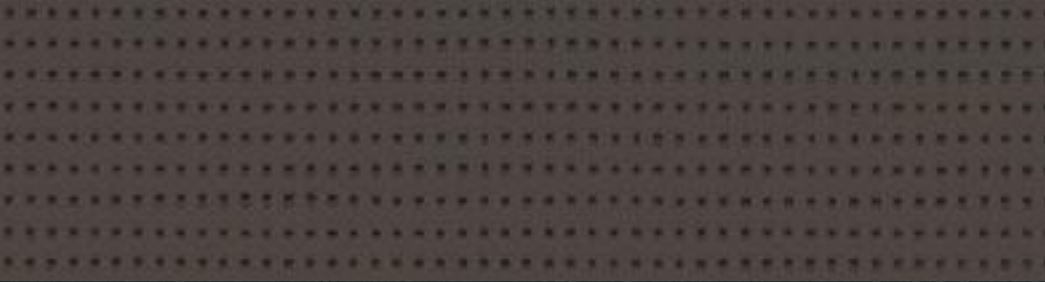
86-2135
Sand Beige



86-2044
White



86-2171
Light Grey



86-2043
Bronze



86-51176
Black



86-2167
Concrete Grey

Soltis 86

Fabric Collection

Soltis 86 provides an excellent outward visibility and blocks up to 93% of heat, even when the awning is lowered. Its color options, compatible with Soltis 92, support facade harmony and optimal thermal protection, contributing to energy savings. Furthermore, it increases natural light intake and reduces the need for artificial lighting.



Up to 28% natural light transmission



Enhanced Visual Comfort



Dimensional Stability
Thanks to Preconstraint (Pre-tensioning) Technology

Soltis 86 Specifications

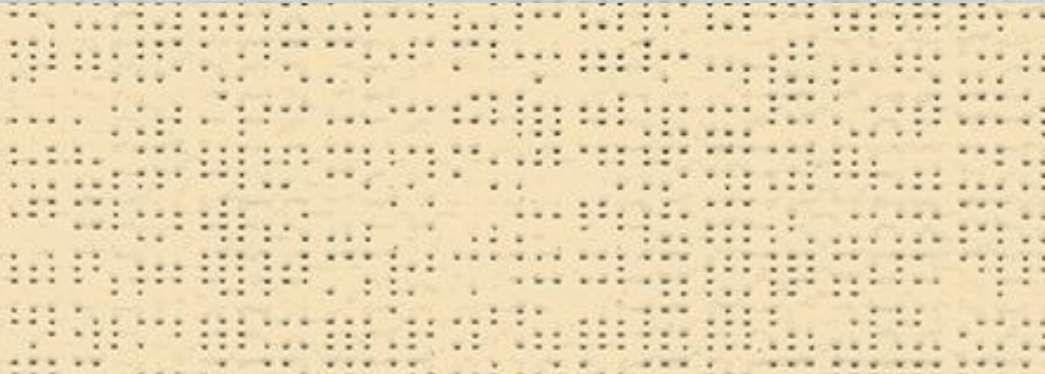
	Technical Specifications / Properties	Standards
Openness Factor	14%	
Weight	380 g/m ² • 11.2 oz/sq. yd	EN ISO 2286-2
Thickness	0.45 mm • 450 microns	
Width	177 cm - 267 cm • 69.7 in - 105.1 in	
	Roll Length	
For 177 cm Width	50 lm • 54.68 yd	
For 267 cm Width	40 lm • 43.74 yd	
	Physical Properties	
Tensile Strength (warp / weft)	230/160 daN/5 cm • 517/360 lbs/2 in	EN ISO 1421
Tear Resistance (warp / weft)	45/20 daN • 101/45 lbs	DIN 53.363
	Fire Resistance / Flame Retardancy	
Euroclass	B-s2,d0	EN 13501-1

Management System

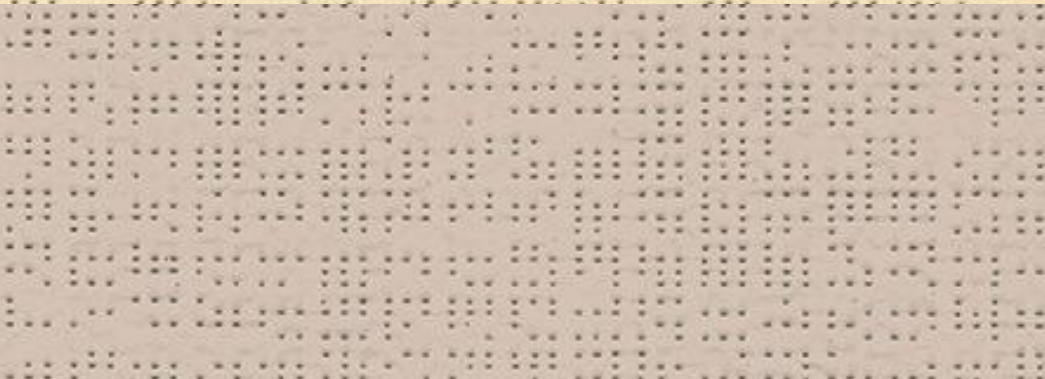
Quality: ISO 9001 • **Environment:** ISO 14001 • **Energy:** ISO 50001



92-2171
Light Grey



92-2175
Champagne



92-2135
Sand Beige



92-2043
Bronze



92-51176
Black



92-2044
White

Soltis 92

Fabric Collection

While providing energy savings by blocking up to 97% of the heat, its micro-perforations filter the heat. Excellent transparency and glare control earn points in certifications such as LEED and BREEAM. It provides long-lasting color fastness according to ISO 105 A02. Class 4 opacity in compliance with EN 14501 is ideal for sensitive areas; it blocks visible light, infrared, and UV rays, and is resistant to harsh outdoor weather conditions.



Thermal Performance



Optimum Visual Comfort



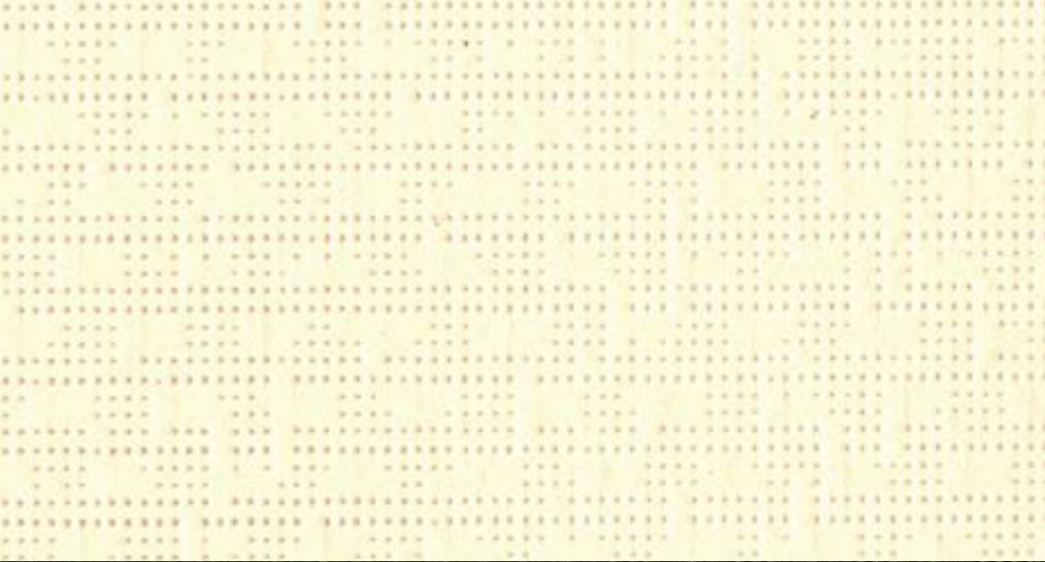
Mechanical Resistance and Dimensional Stability

Soltis 92 Specifications

	Technical Specifications / Properties	Standards
Openness Factor	4%	
Weight	420 g/m ² · 12.4 oz/sq. yd	EN ISO 2286-2
Thickness	0.45 mm · 450 microns	
Width	177 cm - 267 cm · 69.7 in - 105.1 in	
	Roll Length	
For 177 cm Width	50 lm · 54.68 yd	
For 267 cm Width	40 lm · 43.74 yd	
	Physical Properties	
Tensile Strength (warp / weft)	310/210 daN/5 cm · 697/472 lbs/2 in	EN ISO 1421
Tear Resistance (warp / weft)	45/20 daN · 101/45 lbs	DIN 53.363
	Fire Resistance / Flame Retardancy	
Euroclass	B-s2,d0	EN 13501-1

Management System

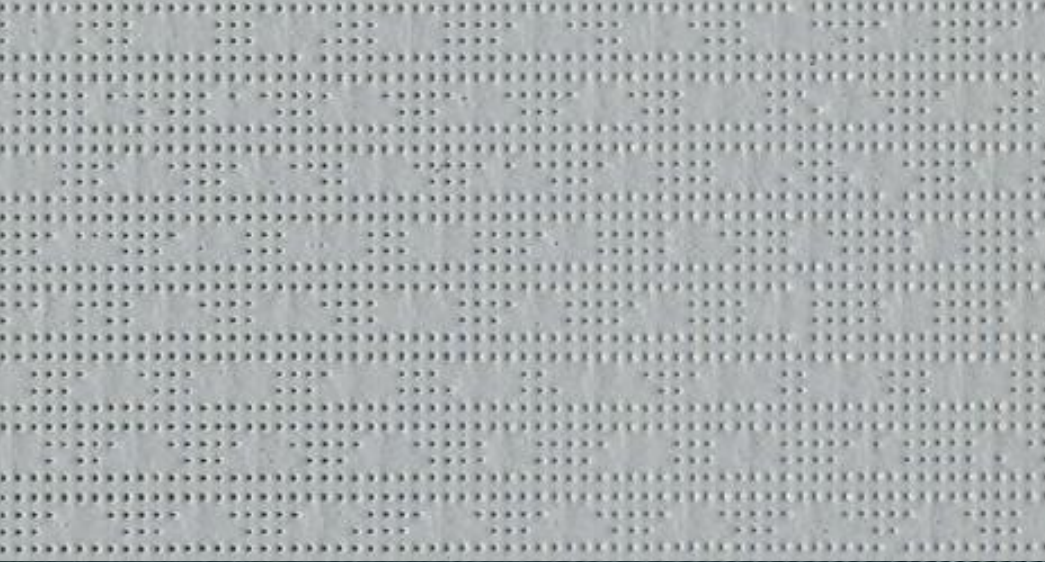
Quality: ISO 9001 • Environment: ISO 14001 • Energy: ISO 50001



96-1103
Off-White



96-2043
Bronze



96-2171
Light Grey



96-2047
Anthracite Grey

Soltis 96

Fabric Collection

Natural coolness and brightness. The ideal fabric series for your terraces or patios. Its micro-perforated design allows air to circulate freely while protecting you from the sunlight and intense heat.



Thermal Performance



Thermal Protection

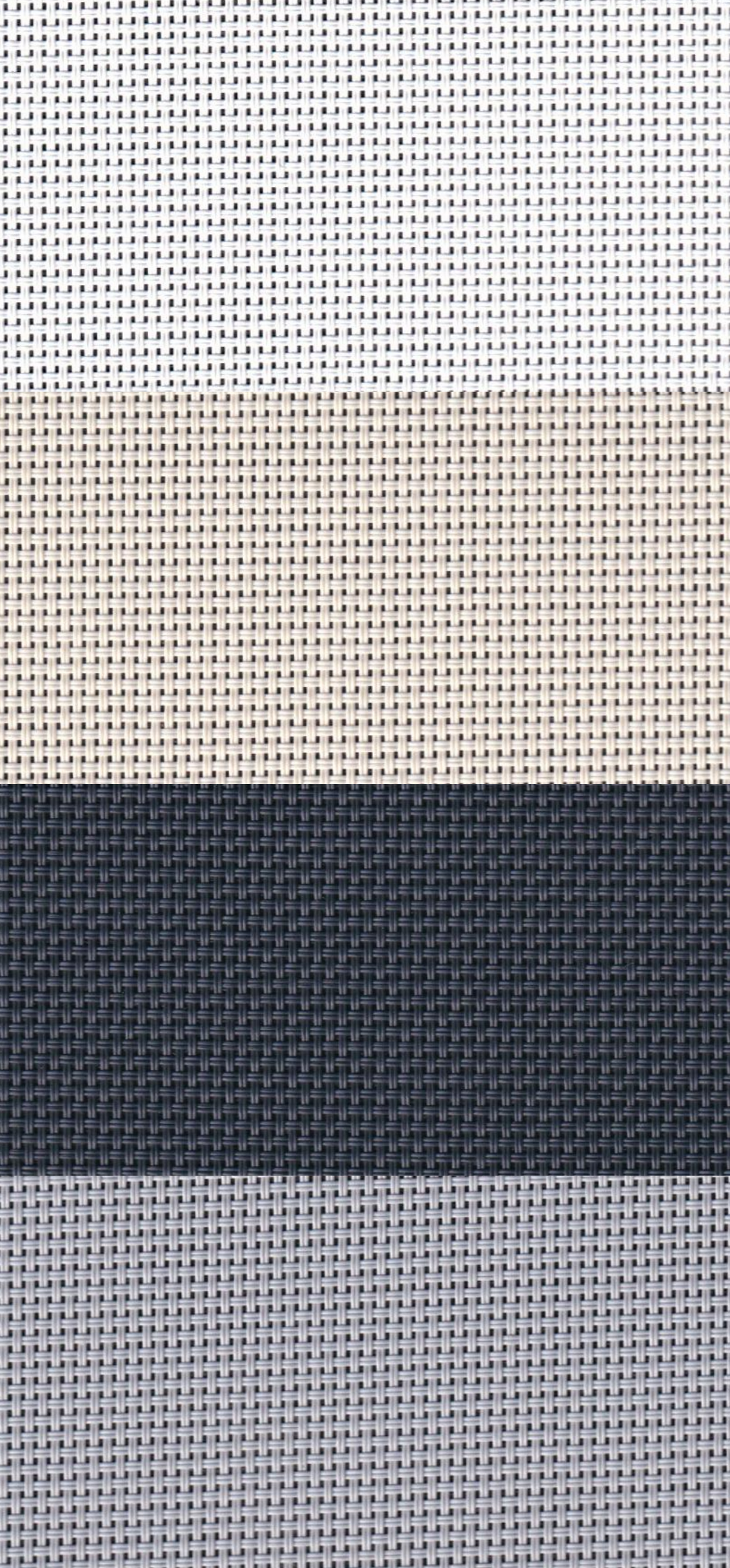
Blocks heat;
micro-perforations
support airflow.

Soltis 96 Specifications

	Technical Specifications / Properties	Standards
Openness Factor	4%	
Weight	400 g/m ² · 11.8 oz/sq. yd	EN ISO 2286-2
Thickness	0.45 mm · 450 microns	
Width	120 cm - 267 cm · 47.2 in - 105.1 in	
	Roll Length	
For 120 cm Width	40 lm · 43.74 yd	
For 267 cm Width	40 lm · 43.74 yd	
	Physical Properties	
Tensile Strength (warp / weft)	220/220 daN/5 cm · 495/495 lbs/2 in	EN ISO 1421
Tear Resistance (warp / weft)	30/25 daN · 67/56 lbs	DIN 53.363
	Fire Resistance / Flame Retardancy	
Euroclass	B-s2,d0	EN 13501-1

Management System

Quality: ISO 9001 • Environment: ISO 14001 • Energy: ISO 50001



White

Cream

Anthracite Grey

Grey

Akseki

Fabric Collection



Akseki Zip Screen fabrics provide effective sun control and energy savings while adding aesthetics to your spaces. It offers a comfortable living space by blocking harmful UV rays to a large extent. Produced from certified materials sensitive to human health and the environment, these fabrics elevate hygiene standards in your spaces thanks to their antibacterial property. The Akseki series, which is long-lasting, highly resistant to fading, and has a 5-year warranty; adds a stylish and reliable touch to your architectural projects with its printable structure and modern color options (white, anthracite grey, cream, grey).



Fire Resistant

5%

Openness Factor



**Antibacterial and
Eco-Friendly**

Akseki Fabric Specifications

	Technical Specifications / Properties	Standards
Openness Factor	5%	
Weight	460 g/m ² ± 5%	
Thickness	0.64 mm ± 5%	
Width	250 cm - 300 cm	
Physical Properties		
Tensile Strength (warp / weft)	≥ 1550 N/5 cm - ≥ 1300 N/5 cm	
Tear Resistance (warp / weft)	≥ 100 N - ≥ 80 N	
Fire Resistance / Flame Retardancy		
Flammability Standards	FR (US) - NFPA 701 TM#1 / B1(CN) - GB50222 / BS (GB) - 5867 Part2 TypeB	



Fabric Catalogue