

# RMMELSBACHER

*PURE COOKING PLEASURE*



# NOVELTIES

2026

**NEW**

Double Hot Air Fryer  
FRH 2650

**XXL**



*up to 230°C*

 **Kitchen Innovation Award 2026**

**AWARD-WINNING PRODUCT**

CONSUMERS' CHOICE

- ✓ Functionality
- ✓ User-convenience
- ✓ Innovation
- ✓ Product benefit
- ✓ Design

[kitcheninnovationaward.com](http://kitcheninnovationaward.com)



# Hot Air Fryer FRH 1850 · FRH 2650

Maximum versatility – perfect results

- ★ **XXL capacity** – 2 baskets of 5.5 litres each, for up to 1.2 kg of fries – **FRH 2650**
- ★ **XXL frying basket** – 7.5 litres, for up to 1.0 kg of fries – **FRH 1850**
- ★ **top performance** – temperature range from 40 °C to 230 °C
- ★ **intuitive operation** – colour icons & Touch Control sensors
- ★ **all in view** – large viewing window & switchable interior lighting
- ★ **easy to clean & pollution-free** – ceramic non-stick coating (PFAS-free)

## Additional features:

- modern, elegant design – stainless-steel surfaces with anti-fingerprint coating
- Hot Air Convection Technology: even heat distribution for perfect results
- 60-minute timer, continuous operation up to 16 hours for slow cook/ defrost/dehydrate
- LED display with easy-to-understand colour icons
- functions and programs directly selectable
- turn/shake reminder
- 'Crispy' function for quick browning
- heat-insulated housing with metal inner walls
- removable frying rack
- overheat protection, safety switch



## Hot Airfryer FRH 1850

- 10 customisable programs for frying, roasting, grilling, defrosting, etc.



## Double Hot Airfryer FRH 2650

- 12 customisable programs for frying, roasting, grilling, defrosting, etc.
- maximum flexibility:
  - o 'Match' function: only one setting for both chambers
  - o 'Sync' function: different dishes finish at the same time



**Type:** FRH 1850

Colour: stainless steel  
 Power: 230 V · 1570-1870 W  
 Dimensions: 31 x 31 x 41 cm  
 EAN: 4001797 009814

**More information**



**Type:** FRH 2650

Colour: stainless steel  
 Power: 230 V · 2250-2700 W  
 Dimensions: 43 x 32 x 38 cm  
 EAN: 4001797 009838

**More information**



**NEW**



Anti-static  
function



for full aroma: attachable  
bellows removes residual  
grounds from the grinder



direct grinding into a portafilter,  
2 portafilter holders (51/54 and  
58 mm Ø)



# Premium Coffee Mill EKM 600

*For perfect coffee/espresso enjoyment, barista feeling at home*

- ★ stainless steel conical burr grinder – aroma-preserving and precise grinding from extra-fine for espresso to coarse for French press coffee
- ★ maximum flexibility – grind directly into a standard portafilter (51/54 and 58 mm Ø) or conveniently into the collection container
- ★ anti-static function – neutralizes static buildup of the coffee powder

## Additional features:

- aroma-preserving grinding at approx. 450 rpm, grinding degree adjustable in 75 steps
- grinding time selectable in 35 steps from 3 to 60 seconds, automatic shut-off
- high-quality, robust stainless steel conical grinder:
  - o durable metal gear with anti-blocking/overload protection
  - o modular design for easy cleaning, particularly quiet in operation
- smoothly operating control knob with integrated on/off switch
- for full aroma: attachable bellows removes residual grounds from the grinder
- detachable beans container (120 g) with closure system, BPA-free
- removable powder container (90 g) with aroma seal, BPA-free
- magnetically fixable powder outlet, integrated LED light
- 4 non-slip silicone feet, practicable cable storage
- 2 portafilter holders (51/54 and 58 mm Ø), 2 filling aids, bellows, cleaning brush



**Type:** EKM 600

Colour: anthracite

Power: 230 V · 150 W

Dimensions: 15.5 x 22.5 x 30.5 cm

EAN: 4001797 010179



**More  
information**



**NEW**

# Automatic Long Slot Toaster

*Maximum ease of use – with motorized lift function*



- ★ convenient – motorized lift function for automatic lowering and raising
- ★ smart – large control panel with countdown display & Touch Control sensors
- ★ intelligent – automatic browning time adjustment for always consistent results
- ★ perfectly toasted – even browning in 7 steps
- ★ individual & versatile – additional 'Bagel', 'Crisp' and 'Look'n Check' functions

#### Additional features:

- heat-insulated Cool-Touch housing – stainless steel surfaced with anti-fingerprint coating
- large and extra-wide long slot, ideal for bread slices up to 24 cm or two XL toast slices up to 12 x 12 cm
- automatic centring of bread slices for even browning
- innovative additional functions:
  - o 'Defrost': for frozen bread/toast, Reheat: for previously toasted bread/toast
  - o 'Bagel': toasts cut side only, other side is gently warmed
  - o 'Crisp': inside toasted golden-brown, other, other side gently roasted
  - o 'Look'n Check': at the touch of a button, lift raises toast for inspection and lowers it again automatically
- detachable bun warmer with heat-insulated handles
- removable crumb tray with soft lock, cable storage
- 4 non-slip silicone feet for safe standing



**Type:** TOL 1000

**Colour:** stainless steel/black

**Power:** 230 V · 790-930 W

**Dimensions:** 36 x 13 x 18.5 cm

**EAN:** 4001797 010209



**More  
information**

**NEW**

# Travel Kettle WK 1000

Compact & lightweight – the perfect companion for travel & small households



- ★ versatile – hot water for tea, coffee, instant soups, or baby food
- ★ high-quality – inner container and inner lid made of stainless steel
- ★ safe – heat-insulated cool-touch housing, foldable handle

#### Additional features:

- compact and easy to store, just 750 g in weight
- capacity 0.6 litres, covered heating element
- automatic shut-off by boil-stop function
- 360° power base – jug can be placed in any position
- detachable lid with surrounding silicone seal
- integrated cable storage, 3 non-slip silicone feet
- dry-boil protection, overheating protection, pilot lamp
- practical, sturdy transport bag



foldable  
handle



Type: **WK 1000**

Colour: black

Power: 230 V · 1000 W

Dimensions: 14 x 10.5 x 19.5 cm

EAN: 4001797 010148



More  
information

**NEW**



on/off switch with 3-colour battery charge indicator (100% / 50% / 25%)



fits in any drawer!



particularly sustainable – battery replacement without any tool!



# Hand vacuum sealer VAC 25 · VAC 253/S

Maximum power – cordless & superfast vacuuming



VAC 25

- ★ battery operation – without disturbing cable
- ★ long-lasting, powerful lithium-ion battery
- ★ powerful and quiet vacuum pump (up to 7 l/min.), vacuum up to – 0.5 bar
- ★ Extra power mode for even stronger vacuum (for ZIP bags only)

#### Additional features:

- compact and ergonomic plastic housing
- convenient one-hand operation
- automatic stop when reaching the under-pressure
- quick charge via USB-C cable in 45 minutes, up to 100 applications
- easy battery replacement without tool
- space-saving storage, easy to clean, removable suction bell
- including: 8 re-usable ZIP vacuum bags with valve, 1 sealing aid, 1 USB-C charging cable
- note: also suitable for vacuum containers and ZIP vacuum bags from other manufacturers!

Type: VAC 25

Colour: anthracite-metallic

Power: Lithium-Ionen Akku 3.7 V – 1500 mAh

Dimensions: 5 x 5 x 20 cm

EAN: 4001797 829405

More information



#### VAC 253/S – Vacuuming starter set

- consisting of VAC 25 & VCG 1



Type: VAC 253/S

Colour: anthracite-metallic

Power: Lithium-Ionen Akku  
3.7 V – 1500 mAh

EAN: 4001797 008305

#### VCG 1 – set consisting of 3 vacuum glass containers

- made from solid, hygienic borosilicate glass (BPA-free), dishwasher-safe
- sturdy lid with removable seal and integrated date display (BPA-free)
- 1 container each of 350 ml, 670 ml, 1100 ml
- vacuum hose with adapter, additional adapter



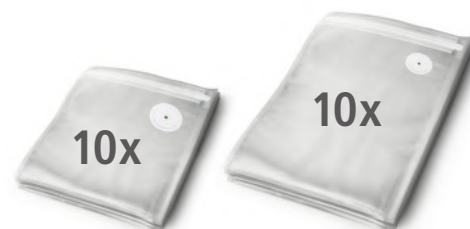
Type: VCG 1

Colour: clear/white

EAN: 4001797 008282

#### VBZ 1 – set consisting of 20 ZIP vacuum bags

- 5-layered, particularly solid & tear-resistant, reusable
- easy opening and closing thanks to practical ZIP closure
- 10 ZIP vacuum bags each measuring 23 x 20 cm and 35 x 26 cm



Type: VBZ 1

Colour: transparent

EAN: 4001797 009654

**NEW**

**PFAS  
FREI**

**ANTI-  
FINGERPRINT**

*3 Litres*

*5 Litres*



MRK 650



MRK 950



innovative 3-D-heating technology  
for constant temperatures and  
energy-saving cooking



including: stainless steel  
steamer insert, serving and  
soup spoon, measuring cup,  
detachable mains cable



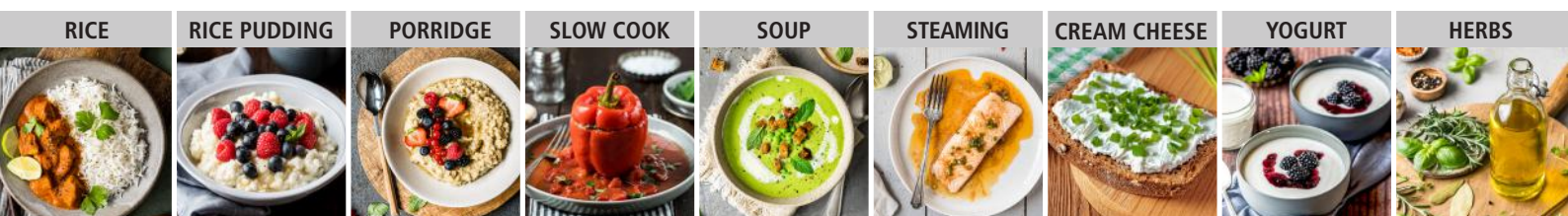
# Multi rice cooker MRK 650 · MRK 950

*Real multi-talents – maximum versatility*

- ★ for all common types of rice, porridge, rice pudding, steaming, slow cooking, soup, yoghurt and much more
- ★ 3 automatic rice programmes with keep-warm function for 60 minutes
- ★ 9 additional programmes with variable settings
- ★ removable, robust inner pot with practical side handles
- ★ high-quality ceramic non-stick coating (PFAS-free)

## Additional features:

- elegant design, high-quality materials – flush even control panel
- stainless steel surfaces with anti-fingerprint coating
- Touch Control sensors for intuitive operation
- LED display, practical start time preselection up to 24 hours
- precise electronic temperature control for particularly gentle preparation
- removable inner lid made of polished stainless steel, easy to clean
- safe operation: 3-fold overheat protection, practical transport handle, non-slip feet



## MRK 650

- 3.0 litre inner pot (2 litre usable volume)
- for up to 10 portions of rice



**Type:** MRK 650  
**Colour:** stainless steel/black  
**Power:** 230 V · 600 W  
**Dimensions:** 27 x 32 x 20 cm  
**EAN:** 4001797 008626



## MRK 950

- 5.0 litre inner pot (3.5 litre usable volume)
- for up to 16 portions of rice



**Type:** MRK 950  
**Colour:** stainless steel/black  
**Power:** 230 V · 860 W  
**Dimensions:** 30 x 34 x 24 cm  
**EAN:** 4001797 008657



**NEW**

# Pizza raclette RCP 1800

The all-rounder for creative moments of enjoyment



- ★ as a pizza station – for delicious pizza and crispy dough bottom
- ★ as a classic raclette – gratinating and melting cheese in the pan
- ★ as tabletop and party grill – all year round for savory & sweet dishes
- ★ reversible plate – ribbed / teppanyaki with pancake moulds

#### Additional features:

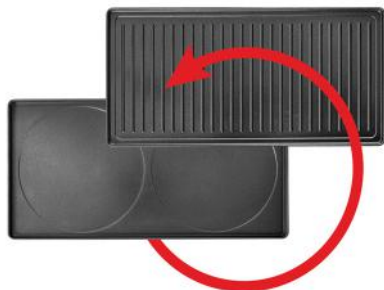
- high quality die-cast aluminium casing
- continuous temperature control for the grill and raclette level
- central on/off main switch with pilot lamp for safe switch-off
- practical parking deck for hot, unused pans

#### Prepare, top & enjoy together – pizza time for the whole family!

Simply switch on the bottom heat of the middle level, slide in the pan with the pizza, and in no time at all, the base will be crispy from below and the toppings will be perfectly baked from above – just like at your favo Italian restaurant...



solid die-cast aluminium reversible plate (41.5 x 20.5 cm) with ceramic non-stick coating (PFAS-free), particularly robust and scratch-resistant



#### including:

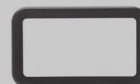
raclette pans



XXL pizza pans



dough cutter



spatulas



Type: RCP 1800

Colour: aluminum/stainless steel

Power: 230 V · 1800 W

Dimensions: 42 x 21 x 15.5 cm

EAN: 4001797 008190



More information

**NEW**

# Contact grill KG 2025

Multifaceted grilling experience for gourmets



quick and easy gratinating!



the temperature can be selected separately for each plate

★ maximum grilling experience:

- ☆ contact grilling – classic double-sided grilling
- ☆ gratinating & gentle cooking – preparing tasty paninis & toasts, height-adjustable in 5 positions for perfect adjustment to the food
- ☆ as fully-fledged tabletop & party grill – with hinged grill plates for double grill surface

★ extra BBQ function – the electronics detect when the grill plates are open and automatically switch to BBQ mode – stable temperature up to 230 °C guaranteed

**Additional features:**

- elegant design with high-quality stainless steel application
- easy-care casing with anti-fingerprint coating
- 2 large rotary knobs, grill surfaces can be controlled separately
- 2 solid, removable die-cast aluminium grill plates (41.5 x 20.5 cm)
  - o 1 ribbed grill surface for the typical grill pattern
  - o 1 smooth teppanyaki grill surface for fish, vegetables & desserts
- high-quality, ceramic non-stick coating (PFAS-free), especially sturdy and scratch-resistant
- precise electronic temperature control in 15 levels from 60 °C to 230 °C
- LED display, start/stop button, 60-minute timer
- fat drain with integrated drip tray for healthy, low-fat grilling
- safe due to 4-fold overheat protection and non-slip feet



**Optional accessories:**

**Waffle plate set KG 25-WA**  
for 4 thick Belgian waffles



**Grill plate set KG 25-GF**

- 1x plate with ribbed grill surface for typical grill pattern
- 1x plate with flat teppanyaki grill surface (e.g. for fish and vegetables)



**Type: KG 2025**

Colour: stainless steel/black  
Power: 230 V · 1830 - 2200 W  
Dimensions: 36 x 33 x 17.5 cm  
EAN: 4001797 230102



**More information**

# NEW

# Table blender MX 1260

Power & Safety – for perfect mixing results!



Issue 3/2026



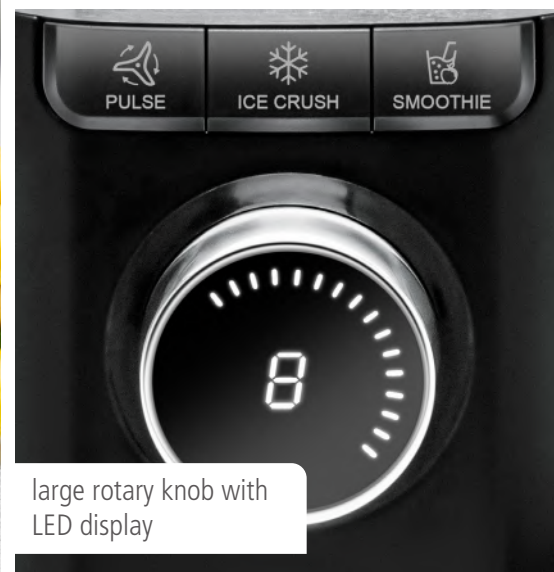
Issue 3/2026



high-quality, very effective 6-bladed special knife made of stainless steel, removable for easy cleaning



up to  
**22.000 r.p.m.**



large rotary knob with  
LED display

- ★ 4-fold safety for maximum protection – operation only with closed lid
- ★ solid 1.5 litre glass jar with handle in one piece!
- ★ large smart rotary knob with LED display
- ★ 2 automatic programmes "Ice Crush" & "Smoothie"

#### Additional features:

- elegant design with high-quality stainless steel application
- 4-fold safety system for maximum protection:
  - operation only with closed lid
  - operation only with correctly placed jug
  - motor overheat protection
  - GS mark for tested safety
- speed regulation with 8 settings and pulse function
- pulse function for short, powerful mixing impulses at maximum power
- removable lid with practical refill opening
- plunger for pushing during operation
- 4 non-slip feet for safe standing



Type: **MX 1260**

Colour: stainless steel/black/glass

Power: 230 V · 1200 W

Dimensions: 19 x 17 x 43.5 cm

EAN: 4001797 008251



More  
information

**NEW**

# Citrus juicer ZP 50

*A healthy boost of freshness for the whole family*



- ★ removable transparent 0.6 litre juice container (BPA-free)
- ★ right/left rotation for a particularly high yield of juice
- ★ separate adjustment of the pulp content

#### Additional features:

- elegant and robust, with stainless steel application
- quiet, powerful motor with high torque
- smooth switching on/off via press cone
- all removable parts are dishwasher-safe
- including: 1 press cone for large fruit, 1 press cone for small fruit, top cover



Type: ZP 50

Colour: stainless steel/black

Power: 230 V · 30 W

Dimensions: 21.5 x 15.5 x 17.5 cm

EAN: 4001797 008176



More  
information

**NEW**

# Mini dehydrator DA 450

*Stylish & practical – also for small households*



Issue 10/2025

- ★ small and stylish – space-saving appliance with Cool Touch housing
- ★ energy-saving and quiet in operation – a large fan ensures optimum air circulation and heat distribution
- ★ precise temperature control, adjustable from 35 °C – 80 °C
- ★ 99-hour timer & keep warm function

#### Additional features:

- 5 removable stainless steel drying trays, drying surface approx. 0.2 m<sup>2</sup>
- LCD display, Touch Control sensors, switchable LED interior lighting
- unheated operation possible - ideal for cooling or defrosting
- all accessories are dishwasher-safe
- replaceable filter fleece, cleans the air during suction
- including: 5 stainless steel dehydrator trays (23.5 x 18 cm each), 1 dehydrator grid, 1 dehydration mat (BPA-free), 2 muesli moulds (BPA-free) for 8 bars, 5 replacement filter fleeces



**Type: DA 450**

Colour: black

Power: 230 V · 420-500 W

Dimensions: 26.5 x 29 x 20 cm

EAN: 4001797 008220



**More information**

Technical modifications colour alterations and mistakes reserved - R2604