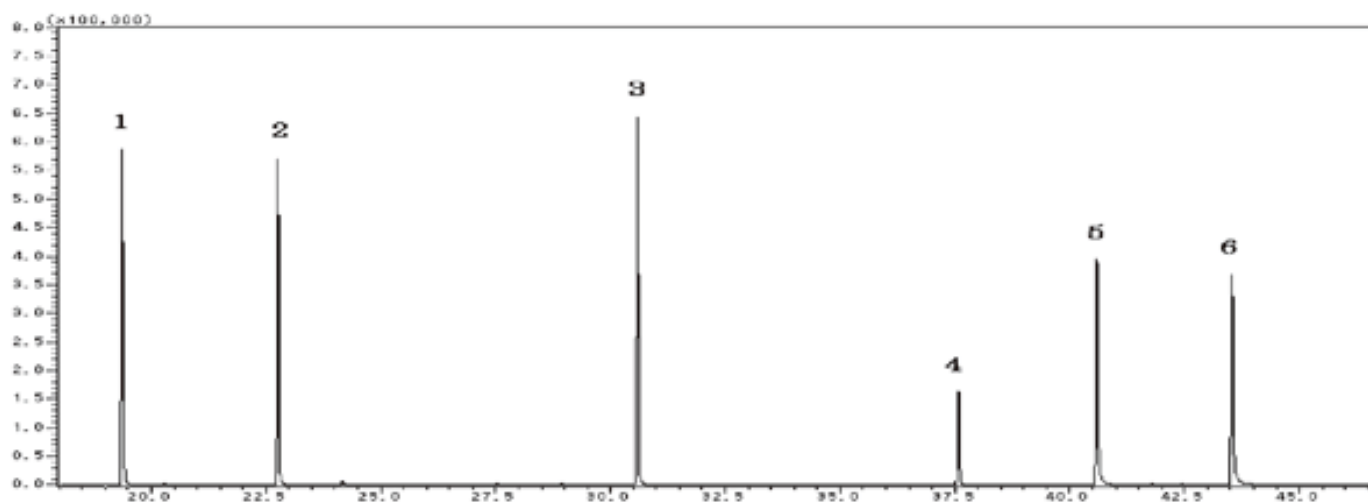


# InertSearch™ for GC

InertCap® Applications

## Phthalate ester

Data No. GA052-0000



System : GC/MS  
Column : InertCap 5MS/Sil  
0.25mmI.D.×30m df=0.25µm  
Column Temp. : 60°C (3min) → 5°C/min → 280°C (3min)  
Injection : Splitless 1µL  
280°C  
Detection : MS SIM  
Sample : Phthalate esters

Solutes : 1. Dimethylphthalate  
2. Diethylphthalate  
3. Di-n-butylphthalate  
4. Butylbenzylphthalate  
5. Di(2-ethylhexyl)phthalate  
6. Dioctylphthalate