

**LOADING &
UNLOADING**

SOLUTIONS

TRUCK MOUNTED KNUCKLE BOOM CRANE

MINIMIZE EFFORT | MAXIMIZE REACH
UPLIFTING THE WORLD



Scan for a Virtual
Plant Visit



Table of Contents

3	WHY KNUCKLE BOOM?	NE-KBC-1475	24
4	KNUCKLE BOOM CRANE	NE-KBC-1675	26
5	CRANE CONFIGURATOR	NE-KBC-1875	28
6	SALIENT FEATURES	NE-KBC-2075	30
7	SAFETY	NE-KBC-2475	32
8	ATTACHMENTS	NE-KBC-3275	34
9	T-CRANES	NE-KBC-4275	36
14	NE-KBC-275	NE-KBC-4875	38
16	NE-KBC-501	PROCESSES	40
18	NE-KBC-675	ABOUT NANDAN GSE	41
20	NE-KBC-875	INDUSTRIES	42
22	NE-KBC-1175	SOME OF OUR CLIENTS	43

WHY KNUCKLE BOOM?

Traditional Cranes



- Traditional cranes have a larger footprint and require more space for storage and operation
- Traditional cranes lack the flexibility and maneuverability of knuckle boom cranes, making them less suitable for confined spaces
- Limited in the variety of tasks they can perform compared to the versatile attachments available for knuckle boom cranes
- Typically require more extensive training for operators due to the complexity of controls and operations
- Due to their size and weight, traditional cranes incur higher transportation costs
- Generally slower to set up and dismantle. Fixed arm requires more time for repositioning and can be less precise in certain applications
- Load distribution is less flexible, requiring careful planning and often additional equipment to balance loads
- Limited reach and accessibility, often requiring additional equipment like scaffolding or secondary lifting devices
- May lack modern safety features and require more manual monitoring and adjustments for safe operation
- Often lack integration with modern technologies, making them less adaptable to new operational requirements
- Typically offer less comfort, with more manual controls and higher noise levels during operation

Nandan's Knuckle Boom Cranes



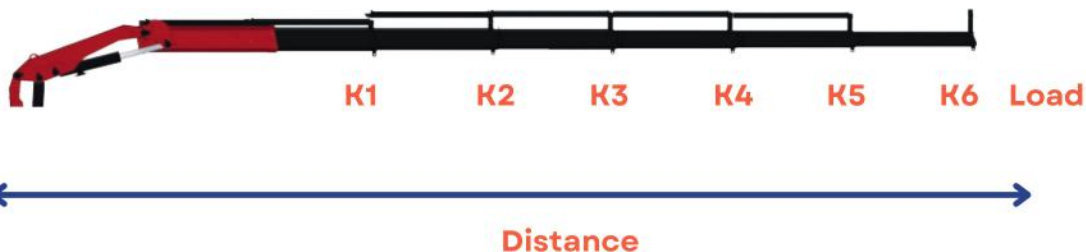
- Knuckle boom cranes can fold into a compact size, allowing for easy storage and transportation on trucks
- The articulated joints provide greater maneuverability in tight spaces, making it ideal for urban environments
- Can be equipped with various attachments like buckets, grapples, and augers for different tasks
- Designed with intuitive controls and minimal training required for operators
- Designed for seamless integration with major truck brands, ensuring easy installation and operation
- High operational efficiency due to quick setup and dismantling. The articulated arm allows for more precise positioning and lifting
- Better load distribution with the ability to adjust the arm's position to balance loads more effectively
- Superior reach and accessibility, able to extend over obstacles and operate in confined spaces with ease
- Equipped with advanced safety features such as overload protection sensors, stability control, and remote operation capabilities
- Incorporate advanced technologies such as telematics, remote diagnostics, and real-time performance monitoring
- Enhanced operator comfort with ergonomic controls, remote operation options, and quieter operation

COMPARO

KNUCKLE BOOM CRANE



CRANE CONFIGURATOR



Crane Capacity = Load (in Tons) x Distance (in mtrs)

For Eg: 5 (Load) x 4 (Distance) = 20 Tm

Model: NE-KBC-XXXX-KY - *R1= Radio Remote(Optional)*

OPTIONS

Chassis GVW (Gross Vehicle Weight)

Ton

4 | 7 | 9 | 11 | 16 | 19 | 28 | 32 | 42 | 47 | 56

Stabilisers

Front = Fixed
Front = Telescopic
Rear = Telescopic

Types

T Cranes : Only column and Boom
Knuckle Boom Cranes: Column, Boom and Knuckle

No. of Booms

one to 6 i.e. K1 - K6

Controls

Manual Lever, Radio Remote

SALIENT FEATURES



- Large slewing angle
- Radio remote control
- Standard Stabilizer Fitment
- Overload protection sensors
- Advanced Crane Diagnostics
- Availability of 6 attachments
- European technology & design
- Designed for seamless integration with major truck brands, ensuring easy installation and operation
- Modern hydraulic systems and fewer exposed moving parts reduce maintenance costs
- European technology & design, produced in India under Make in India program
- Crane extensions up to 6 booms
- Fitment on top of existing or new chassis
- High tensile grade steel along with high quality steel pins and bushes
- High pressure hydraulic pumps & working pressures of 315 bar
- High tensile grade steel
- High-quality steel pins and bushes
- Zinc enriched primer for superior rust prevention
- Superior polyurethane paint
- Standard color RAL 3002
- Option - Other colors on customer request
- High-Quality branded components used in cranes High pressure hydraulic pump

SAFETY



- Overload protection sensors to prevent lifting beyond capacity.
- Stability control system to maintain crane stability and prevent tipping.
- Radio remote controls for safe, distant operation by the operator.
- Advanced crane diagnostics for real-time performance and health monitoring.
- Emergency stop system for immediate shutdown in emergencies.
- Load moment indicator (LMI) to alert operators if loads exceed safe limits.
- Automatic stowage system for secure storage after use.
- Hydraulic safety valves to stop operations in case of pressure loss.
- Proportional control system for precise crane movements.
- Experience in manufacturing Defense equipment
- Slewing lock to prevent unintended movement during transport or maintenance.
- Boom angle indicators to help maintain safe operating parameters.
- Anti-two block system to avoid hook contact with the boom tip.
- Outrigger monitoring system to ensure correct deployment before operation.
- Automatic safe load indicator to alert when approaching maximum capacity.
- Tilt alarm to warn if the crane tilts beyond safe operational angles.
- Crane monitoring display for visual feedback on critical parameters and warnings.
- Self-diagnostics and error reporting for prompt issue resolution

ATTACHMENT



Auger

Ideal for drilling precise holes in various terrains for construction and utility projects



Winch

Provides powerful pulling and lifting capabilities for recovery operations and heavy load management



Sand Bucket

Designed for handling and transporting bulk materials like sand, gravel, and soil efficiently



Man Basket

Enables safe lifting of personnel for aerial tasks such as maintenance, inspection, and installation



Radio Remote

Allows safe, precise, and responsive crane control from a distance, enhancing operational safety



Load Body

Suitable for transporting materials and equipment, enhancing the crane's utility for various logistics tasks



Log Grab

Designed for gripping and moving logs and timber, making it perfect for forestry and logging operations



Brick Block Clamp

Ideal for securely lifting and transporting bricks and concrete blocks, enhancing construction efficiency

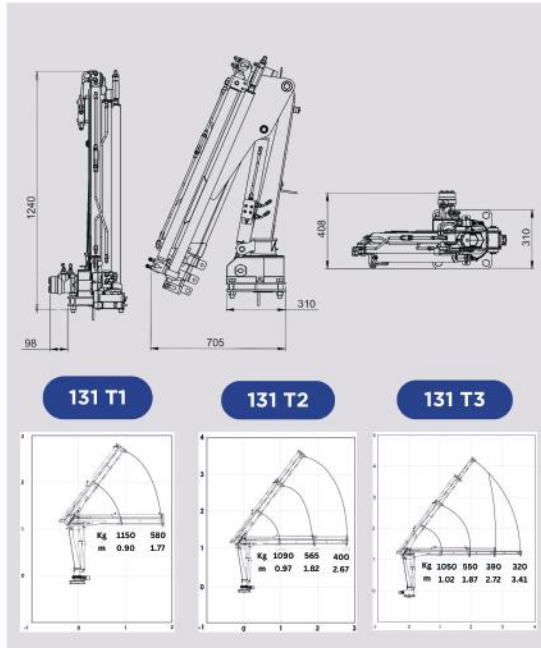


Polygrab

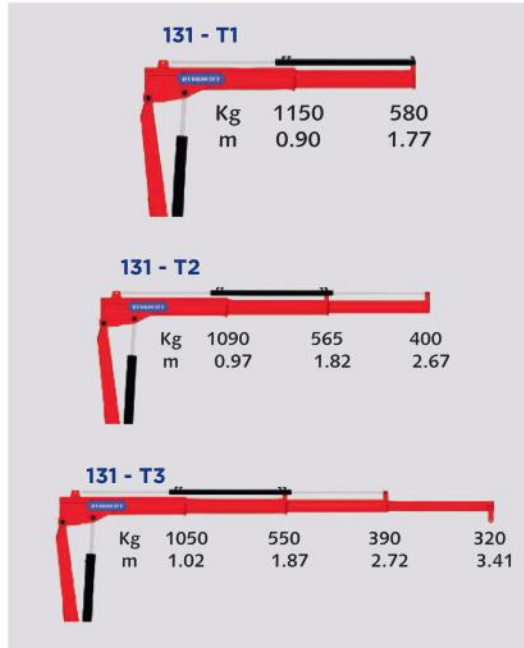
Perfect for handling scrap and waste materials, offering strong gripping and precise control

T-CRANE 131

DIMENSIONS



LOAD DIAGRAMS

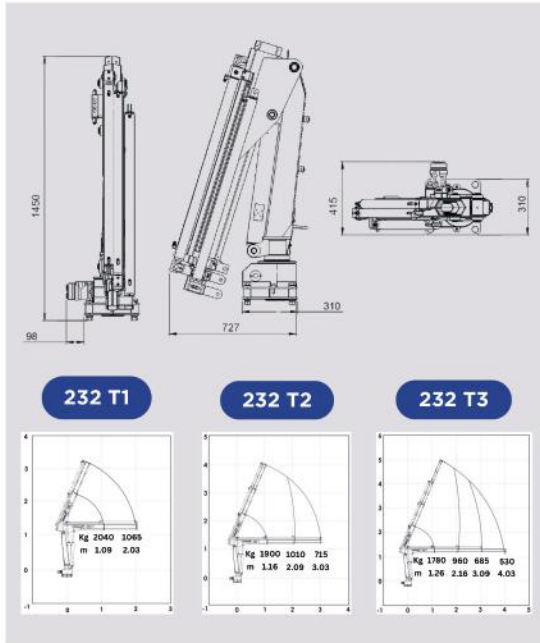


TECHNICAL SPECIFICATIONS

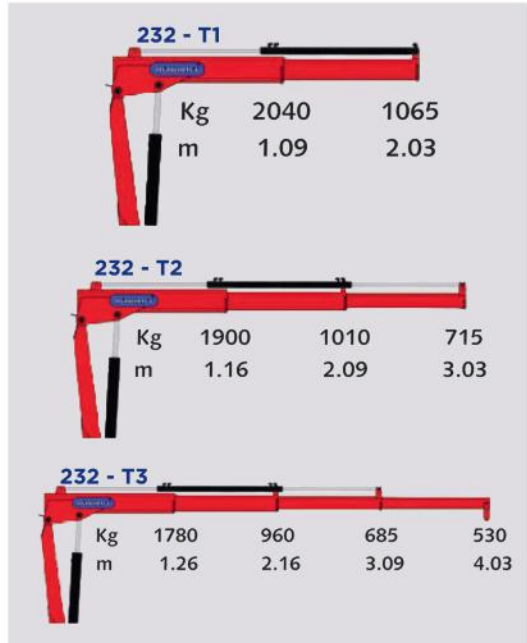
	Units	T1	T2	T3
Load Moment	t-m	1.2	1.2	1.2
Hydraulic Reach	m	1.77	2.67	3.41
Load Lifting Capacity	kg-m	1150 @ 0.90 580 @ 1.77	1090 @ 0.97 565 @ 1.82 400 @ 2.67	1050 @ 1.02 550 @ 1.87 390 @ 2.72 320 @ 3.41
Slewing Angle	Degree	340	340	340
Slewing Torque	k-gm	320	320	320
Height above chassis when folded	mm	1240	1240	1240
Width when folded	mm	408	408	408
Length when folded	mm	705	705	705
Stabilizer spread, standard	mm	2360	2360	2360
Stabilizer spread, Extra long	mm	3600	3600	3600
Standard weight	kg	190	205	221
Working pressure	bar	190	190	190
Oil Flow	L/min	6	6	6
Oil tank	Ltr	15	15	15

T-CRANE 232

DIMENSIONS



LOAD DIAGRAMS



TECHNICAL SPECIFICATIONS

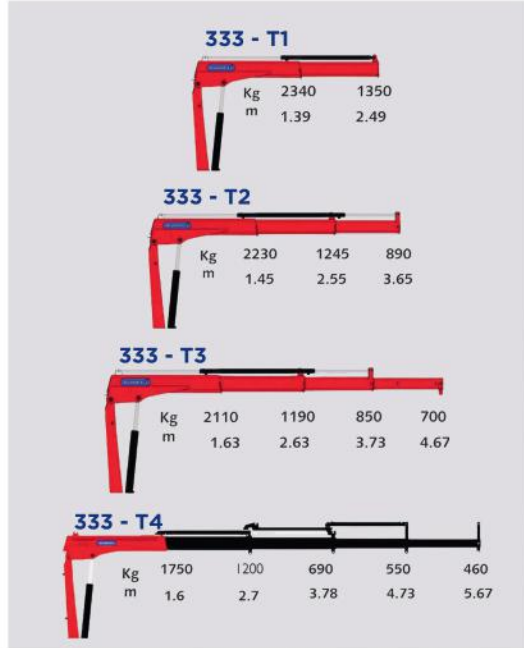
	Units	T1	T2	T3
Load Movement	t-m	2.3	2.3	2.3
Hydraulic Reach	m	2.0	3.0	4.0
Load Lifting Capacity	kg-m	2040 @ 1.09 1065 @ 2.03	1900 @ 1.16 1010 @ 2.09 715 @ 3.03	1780 @ 1.26 960 @ 2.16 685 @ 3.09 530 @ 4.03
Slewing Angle	Degree	340	340	340
Slewing Torque	k-gm	320	320	320
Height above chassis when folded	mm	1450	1450	1450
Width when folded	mm	415	415	415
Length when folded	mm	711	727	727
Stabilizer spread, standard	mm	2300	2300	2300
Stabilizer spread, Extra long	mm	3600	3600	3600
Standard weight	kg	217	235	251
Working pressure	bar	190	190	190
Oil Flow	L/min	6	6	6
Oil tank	Ltr	15	15	15

T-CRANE 333

DIMENSIONS



LOAD DIAGRAMS



TECHNICAL SPECIFICATIONS

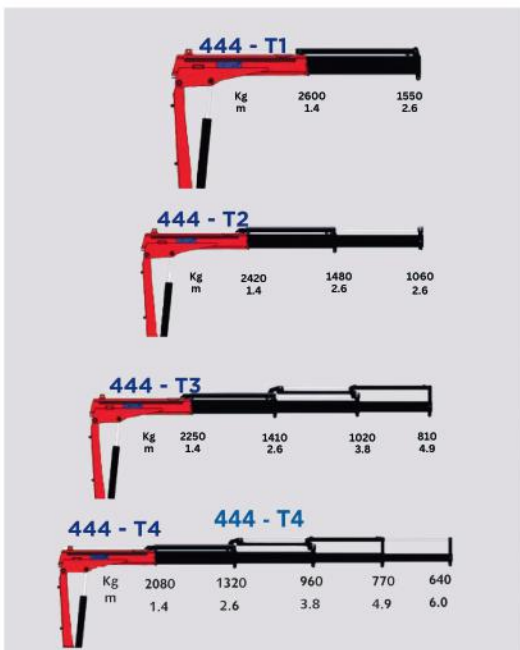
	Units	T1	T2	T3	T4
Load Movement	t-m	3.1	3.1	3.1	3.1
Hydraulic Reach	m	2.5	3.5	4.7	5.7
Load Lifting Capacity	kg-m	2340 @ 1.39 1350 @ 2.49	2230 @ 1.45 1245 @ 2.55 890 @ 3.65	2110 @ 1.63 1190 @ 2.63 850 @ 3.73 700 @ 4.67	1750 @ 1.6 1200 @ 2.7 690 @ 3.78 550 @ 4.73 460 @ 5.67
Slewing Angle	Degree	340	340	340	340
Slewing Torque	k-gm	320	320	320	320
Height above chassis when folded	mm	1648	1648	1648	1648
Width when folded	mm	450	450	450	450
Length when folded	mm	950	950	1030	1030
Stabilizer spread, standard	mm	3200	3200	3200	3200
Stabilizer spread, Extra long	mm	4500	4500	4500	4500
Standard weight	kg	300	320	350	418
Working pressure	bar	230	230	230	230
Oil Flow	L/min	8	8	8	8
Oil tank	Ltr	22	22	22	22

T-CRANE 444

DIMENSIONS



LOAD DIAGRAMS



TECHNICAL SPECIFICATIONS

	Units	T1	T2	T3	T4
Load Movement	t-m	3.8	3.7	3.5	3.4
Hydraulic Reach	m	2.6	3.8	4.9	6.0
Load Lifting Capacity	kg-m	2600 @ 1.4 1550 @ 2.6	2420 @ 1.4 1480 @ 2.6 1060 @ 3.8	2250 @ 1.4 1410 @ 2.6 1020 @ 3.8 810 @ 4.9	2080 @ 1.4 1320 @ 2.6 960 @ 3.8 770 @ 4.9 640 @ 6.0
Slewing Angle	Degree	340	340	340	340
Slewing Torque	k-gm	320	320	320	320
Height above chassis when folded	mm	1648	1648	1648	1648
Width when folded	mm	449	449	449	449
Length when folded	mm	1180	1180	1180	1180
Stabilizer spread, standard	mm	3200	3200	3200	3200
Stabilizer spread, Extra long	mm	4500	4500	4500	4500
Standard weight	kg	340	380	410	440
Working pressure	bar	230	230	230	230
Oil Flow	L/min	8	8	8	8
Oil tank	Ltr	22	22	22	22

KNUCKLE BOOM

Nandan GSE's Knuckle Boom Cranes are at the forefront of technological advancement with a European design & Made in India. These cranes provide superior loading and lifting performance, featuring an extensive operational range that enhances versatility in various work environments.

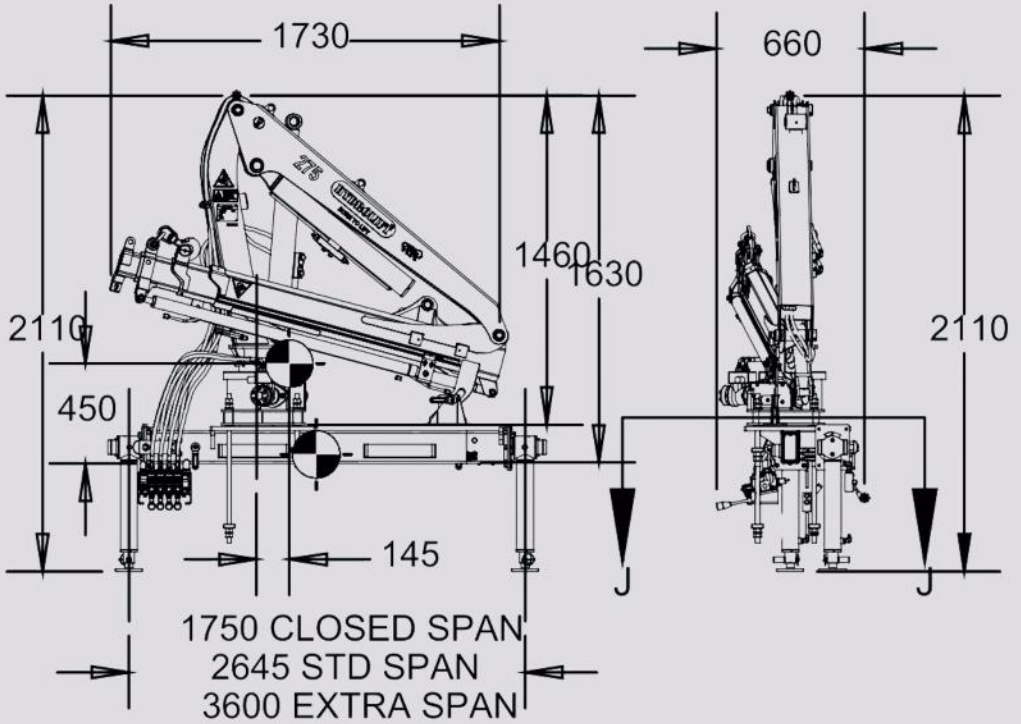
With capacities ranging from 5 to 48 ton-meters, they are designed for seamless integration with major Indian truck brands, ensuring easy installation and operation. These cranes can be made as a kit which can be installed at your location.

These cranes are remarkably user-friendly, requiring only minimal training for operators. This simplicity accelerates proficiency without sacrificing functionality or safety. The user-centric design combines intuitive controls with robust safety features, making these cranes reliable and secure for all types of lifting tasks.



NE-KBC-275

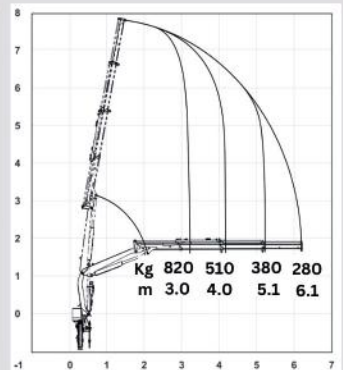
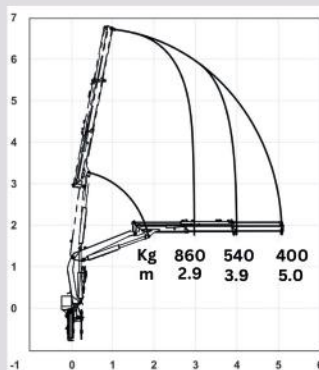
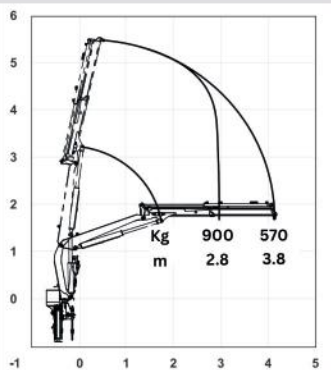
DIMENSIONS



275 K1

275 K2

275 K3



NE-KBC-275

LOAD DIAGRAMS

Nandan's Knucle Boom Crane can be lifting to 2.5 ton-m with various configurations Can be mounted on a 4 ton GVW truck

Contact Nandan GSE before any ordering or finalization. Specifications are indicative and can be changed without notice.

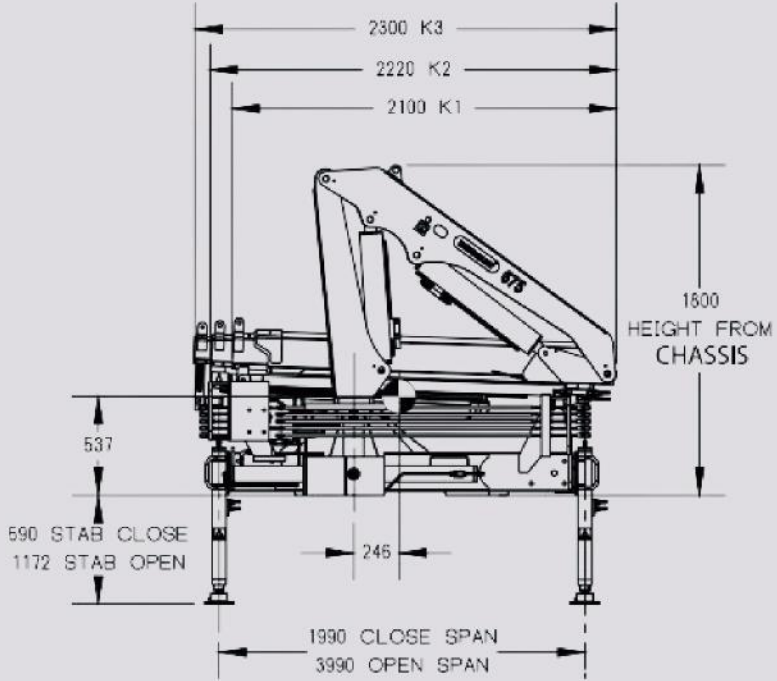


TECHNICAL SPECIFICATIONS

	Units	K1	K2	K3
Load Movement	t-m	2.7	2.6	2.5
Hydraulic Reach	m	6.0	7.8	9.8
Load Lifting Capacity	kg-m	900 @ 2.8 570 @ 3.8	860 @ 2.9 540 @ 3.9 400 @ 5.0	820 @ 3.0 510 @ 4.0 380 @ 5.1 280 @ 6.1
Slewing Angle	Degree	330	330	330
Slewing Torque	k-gm	255	255	255
Height above chassis when folded	mm	1480	1480	1480
Width when folded	mm	410	410	410
Stabilizer spread, standard	mm	2645	2645	2645
Standard weight	kg	350	385	420
Working pressure	bar	190	190	190
Oil Flow	L/min	11	11	11
Oil tank	Ltr	25	25	25

NE-KBC-501

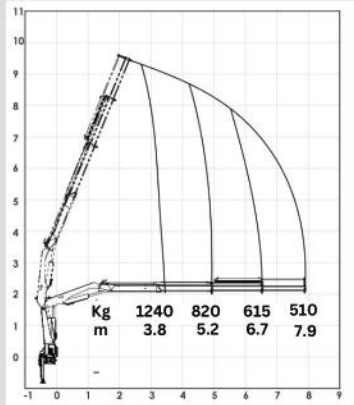
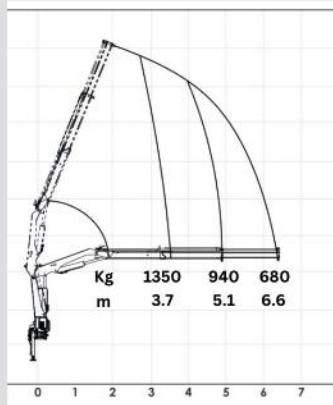
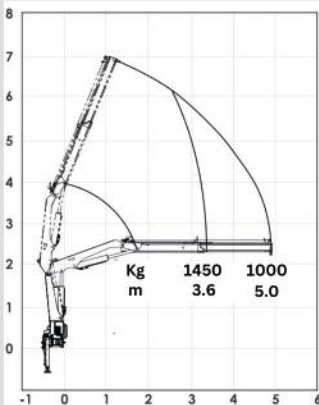
DIMENSIONS



501 K1

501 K2

501 K3



NE-KBC-501

LOAD DIAGRAMS

Nandan's Knucle Boom Crane can be lifting to 5 ton-m with various configurations Can be mounted on a 7 ton GVW truck

Contact Nandan GSE before any ordering or finalization. Specifications are indicative and can be changed without notice.

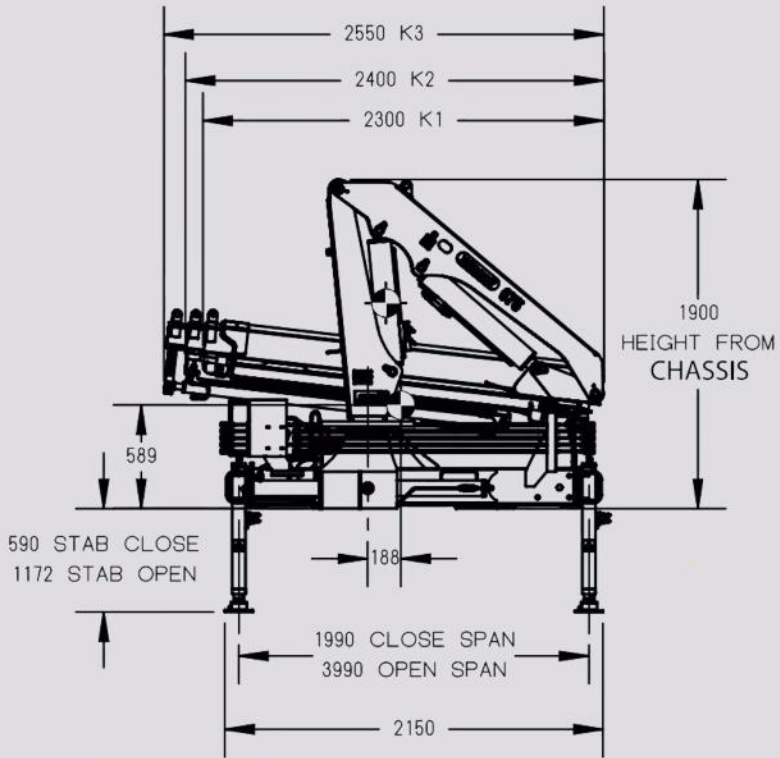


TECHNICAL SPECIFICATIONS

	Units	K1	K2	K3
Load Movement	t-m	4.9	4.8	4.6
Hydraulic Reach	m	5.0	6.6	7.9
Load Lifting Capacity	kg-m	1450 @ 3.6 1000 @ 5.0	1350 @ 3.7 940 @ 5.1 680 @ 6.6	1240 @ 3.8 820 @ 5.2 615 @ 6.7 510 @ 7.9
Slewing Angle	Degree	400	400	400
Slewing Torque	k-gm	581	581	581
Height above chassis when folded	mm	1771	1771	1771
Width when folded	mm	460	460	460
Length when folded	mm	2090	2090	2090
Stabilizer spread, standard	mm	3990	3990	3990
Standard weight, excl. stabilizers	kg	600	640	680
Stabilizer weight	kg	104	104	104
Working pressure	bar	240	240	240
Pump Preference	L/min	25	25	25
Oil tank	Ltr	35	35	35

NE-KBC-675

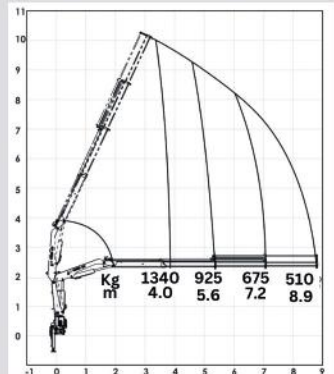
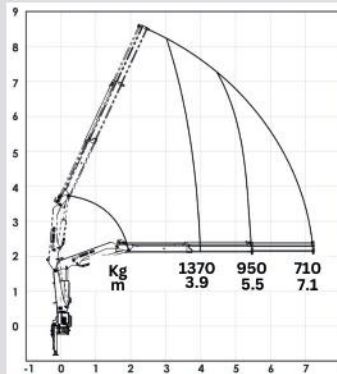
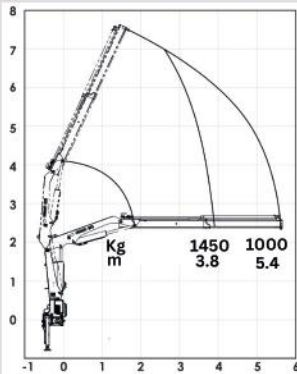
DIMENSIONS



675 K1

675 K2

675 K3

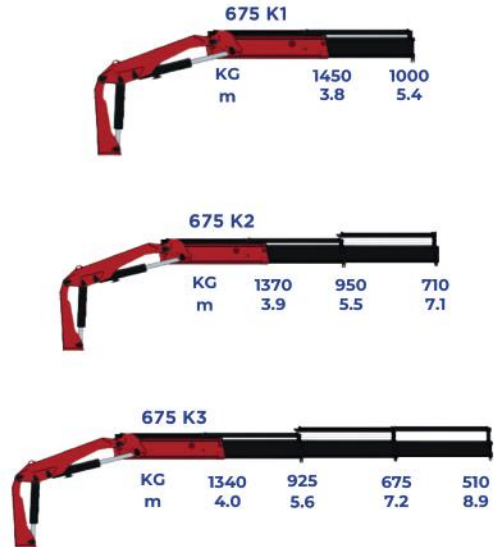


NE-KBC-675

LOAD DIAGRAMS

Nandan's Knucle Boom Crane can be lifting to 5.5 ton-m with various configurations. Can be mounted on a 7 ton GVW truck.

Contact Nandan GSE before any ordering or finalization. Specifications are indicative and can be changed without notice.

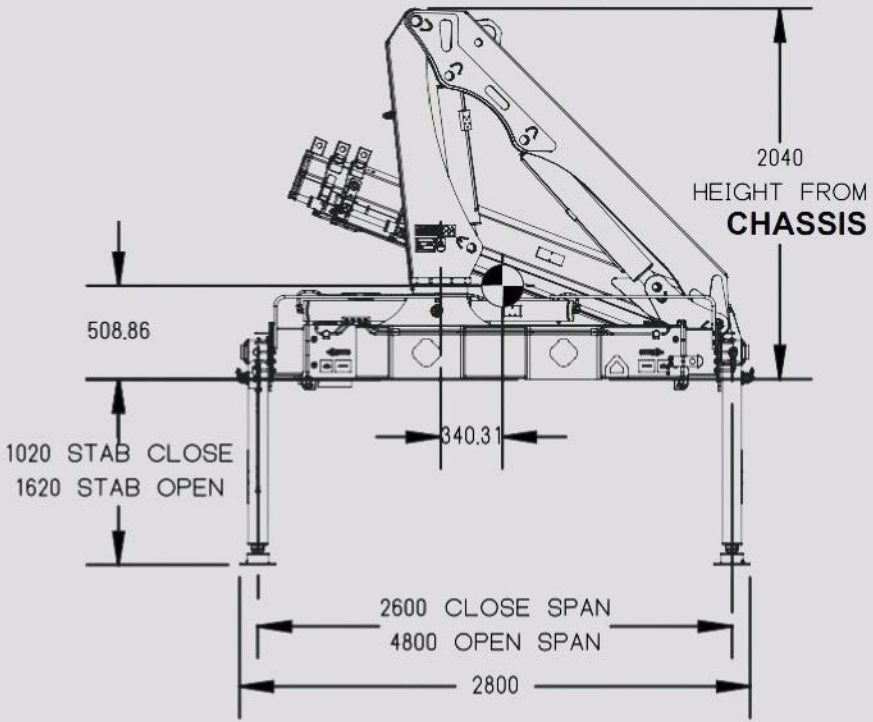


TECHNICAL SPECIFICATIONS

	Units	K1	K2	K3
Load Movement	t-m	5.5	5.3	5.1
Hydraulic Reach	m	5.4	7.1	8.9
Load Lifting Capacity	kg-m	1450 @ 3.8 1000 @ 5.4	1370 @ 3.9 950 @ 5.5 710 @ 7.1	1340 @ 4.0 925 @ 5.6 675 @ 7.2 510 @ 8.9
Slewing Angle	Degree	400	400	400
Slewing Torque	k-gm	581	581	581
Height above chassis when folded	mm	1875	1875	1875
Width when folded	mm	585	585	585
Stabilizer spread, standard	mm	3990	3990	3990
Standard weight	kg	690	760	830
Working pressure	bar	240	240	240
Oil flow	L/min	25	25	25
Oil tank	Ltr	35	35	35

NE-KBC 875

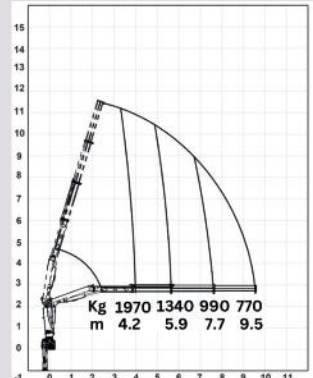
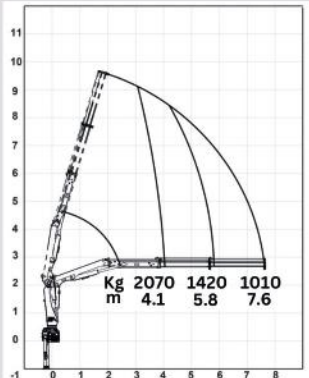
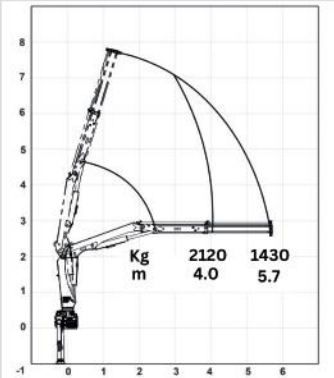
DIMENSIONS



875 - K1

875 - K2

875 - K3

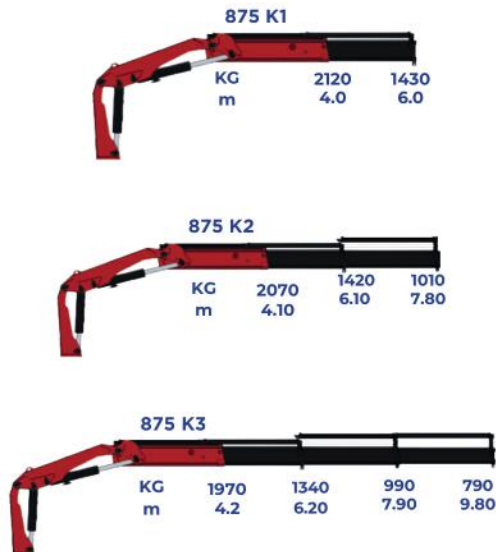


NE-KBC 875

LOAD DIAGRAMS

Nandan's Knucle Boom Crane can be lifting to 8.5 ton-m with various configurations Can be mounted on a 9 ton GVW truck

Contact Nandan GSE before any ordering or finalization. Specifications are indicative and can be changed without notice.

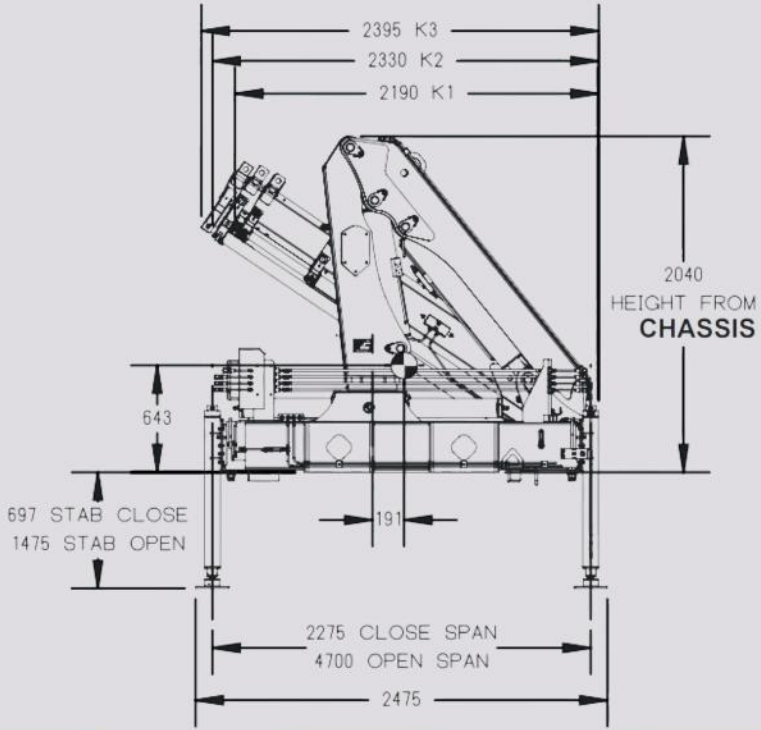


TECHNICAL SPECIFICATIONS

	Units	K1	K2	K3
Load Movement	t-m	8.5	8.4	8.3
Hydraulic Reach	m	5.7	7.6	9.5
Load Lifting Capacity	kg-m	2120 @ 4.0 1430 @ 5.7	2070 @ 4.1 1420 @ 5.8 1010 @ 7.6	1970 @ 4.2 1340 @ 5.9 990 @ 7.7 770 @ 9.5
Slewing Angle	Degree	400	400	400
Slewing Torque	k-gm	925	925	925
Height above chassis when folded	mm	2032	2032	2032
Width when folded	mm	725	725	725
Stabilizer spread, standard	mm	4800	4800	4800
Standard weight	kg	1140	1220	1300
Working pressure	bar	290	290	290
Oil Flow	L/min	34	34	34
Oil Tank	Ltr	80	80	80

NE-KBC 1175

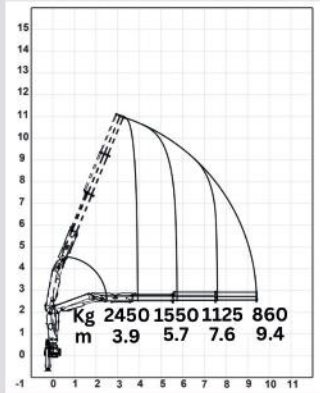
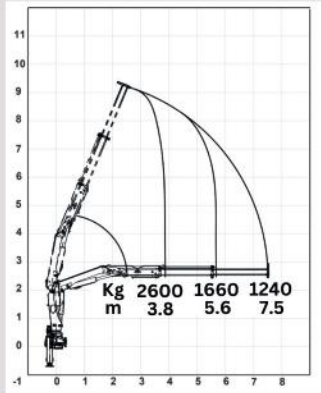
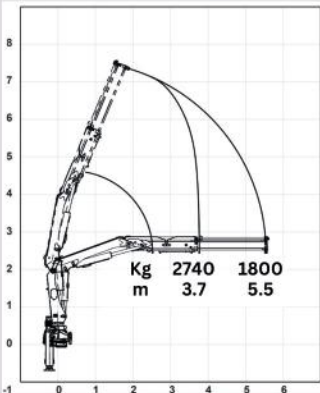
DIMENSIONS



1175 - K1

1175 - K2

1175 - K3



LOAD DIAGRAMS

Nandan's Knucle Boom Crane can be lifting to 10 ton-m with various configurations Can be mounted on a 11 ton GVW truck

Contact Nandan GSE before any ordering or finalization. Specifications are indicative and can be changed without notice.

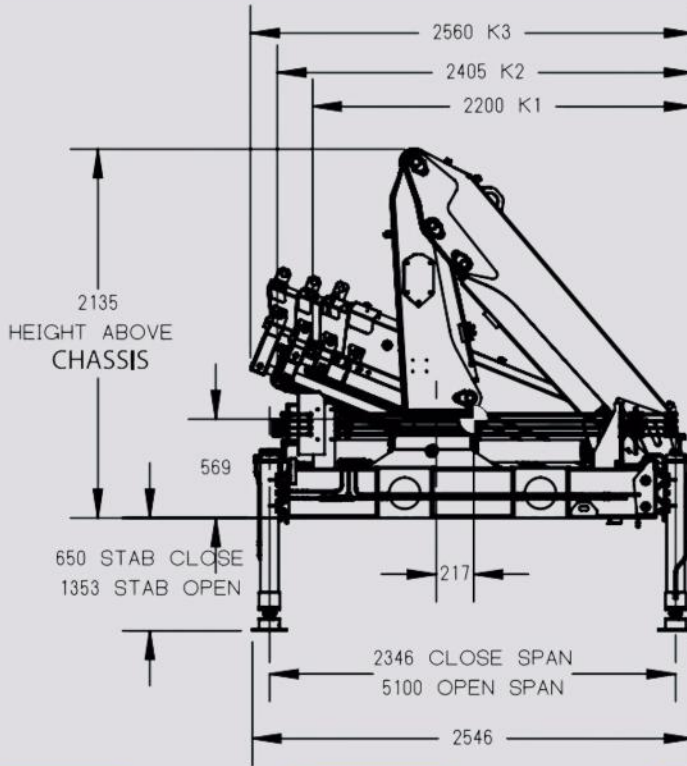


TECHNICAL SPECIFICATIONS

	Units	K1	K2	K3
Load Movement	t-m	10.2	9.9	9.6
Hydraulic Reach	m	5.5	7.5	9.4
Load Lifting Capacity	kg-m	2740 @ 3.7 1800 @ 5.5	2600 @ 3.8 1660 @ 5.6 1240 @ 7.5	2450 @ 3.9 1550 @ 5.7 1125 @ 7.6 860 @ 9.4
Slewing Angle	Degree	400	400	400
Slewing Torque	k-gm	1280	1280	1280
Height above chassis when folded	mm	2021	2021	2021
Width when folded	mm	2490	2490	2490
Stabilizer spread, standard	mm	4700	4700	4700
Standard weight	kg	1330	1440	1550
Working pressure	bar	290	290	290
Oil Flow	L/min	40	40	40
Oil Tank	Ltr	100	100	100

NE-KBC 1475

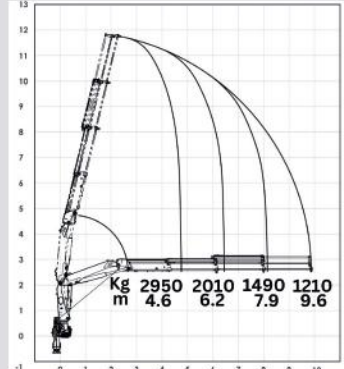
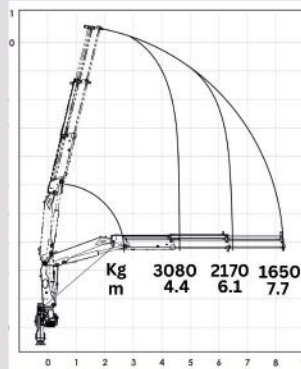
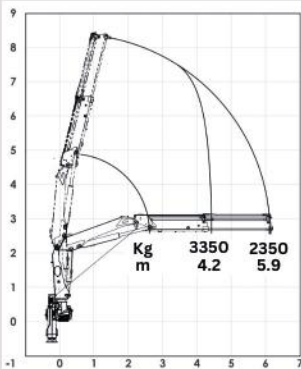
DIMENSIONS



1475 - K1

1475 - K2

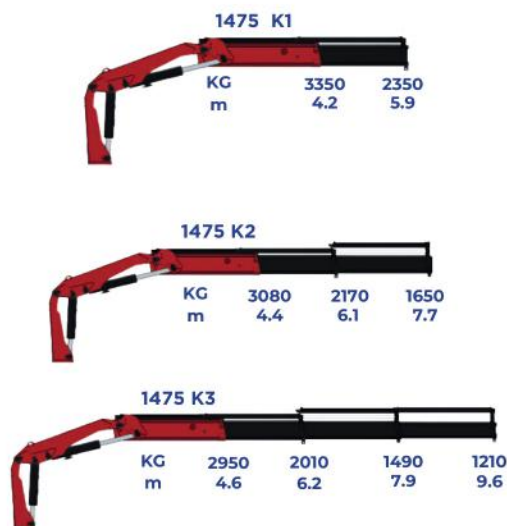
1475 - K3



LOAD DIAGRAMS

Nandan's Knucle Boom Crane can be lifting to 14 ton-m with various configurations Can be mounted on a 14 ton GVW truck

Contact Nandan GSE before any ordering or finalization. Specifications are indicative and can be changed without notice.

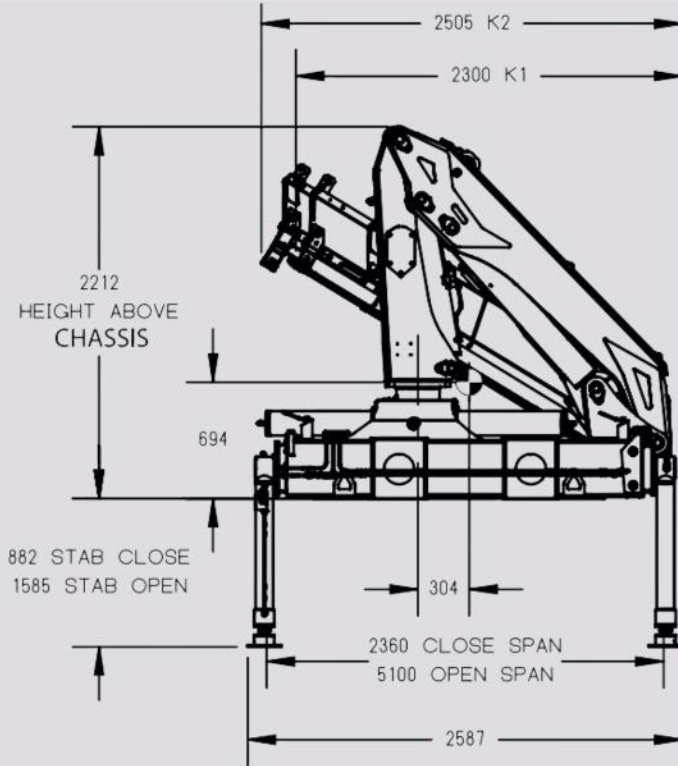


TECHNICAL SPECIFICATIONS

	Units	K1	K2	K3
Load Movement	t-m	14.4	13.5	12.9
Hydraulic Reach	m	5.9	7.7	9.6
Load Lifting Capacity	kg-m	3350 @ 4.2 2350 @ 5.9	3080 @ 4.4 2170 @ 6.1 1650 @ 7.7	2950 @ 4.6 2010 @ 6.2 1490 @ 7.9 1210 @ 9.6
Slewing Angle	Degree	400	400	400
Slewing Torque	k-gm	1370	1370	1370
Height above chassis when folded	mm	2130	2130	2130
Width when folded	mm	937	937	937
Length when folded	mm	2550	2550	2550
Stabilizer spread, standard	mm	5100	5100	5100
Standard weight	kg	1700	1820	1940
Working pressure	bar	300	300	300
Oil Flow	L/min	40	40	40
Oil Tank	Ltr	100	100	100

NE-KBC 1675

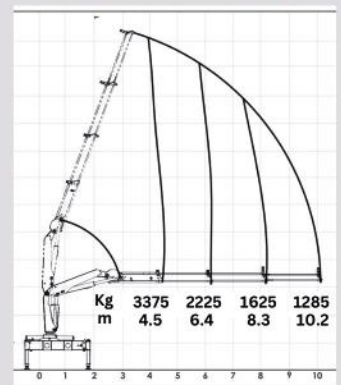
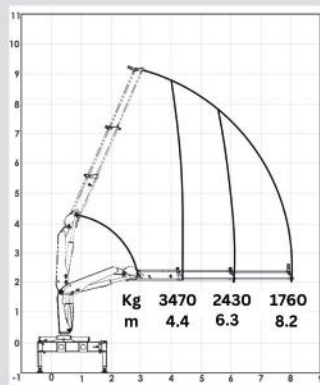
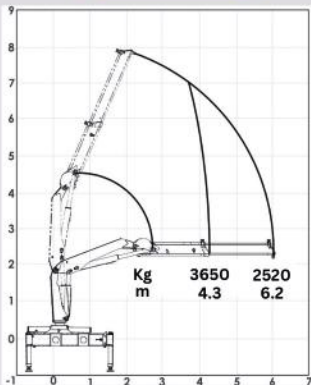
DIMENSIONS



1675 - K1

1675 - K2

1675 - K3



LOAD DIAGRAMS

Nandan's Knucle Boom Crane can be lifting to 16 ton-m with various configurations Can be mounted on a 16 ton GVW truck

Contact Nandan GSE before any ordering or finalization. Specifications are indicative and can be changed without notice.



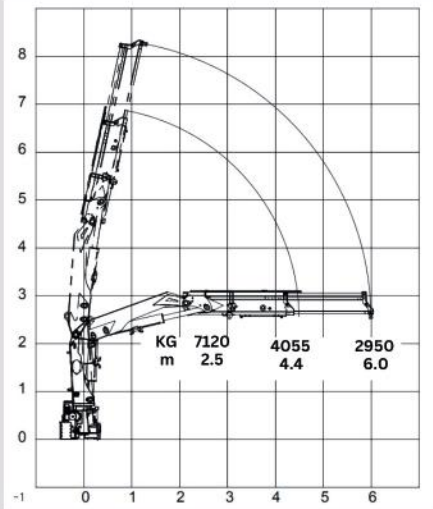
TECHNICAL SPECIFICATIONS

	Units	K1	K2	K3
Load Movement	t-m	15.7	15.6	15.5
Hydraulic Reach	m	6.2	8.2	10.2
Lifting Capacity	kg-m	3650 @ 4.3 2520 @ 6.2	3470 @ 4.4 2430 @ 6.3 1760 @ 8.2	3375 @ 4.5 2225 @ 6.4 1625 @ 8.3 1285 @ 10.2
Slewing Angle	Degree	400	400	400
Slewing Torque	k-gm	1866	1866	1866
Height above chassis when folded	mm	2225	2225	2225
Width when folded	mm	995	995	995
Stabilizer spread, standard	mm	5100	5100	5100
Standard weight	kg	1780	1940	2080
Working Pressure	bar	300	300	300
Oil Flow	L/min	48	48	48
Oil tank	Ltr	120	120	120

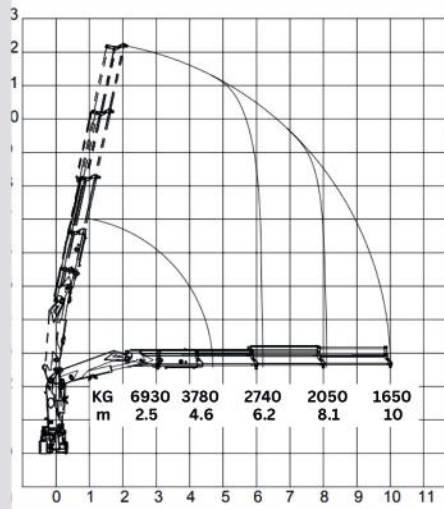
NE-KBC 1875

DIMENSIONS

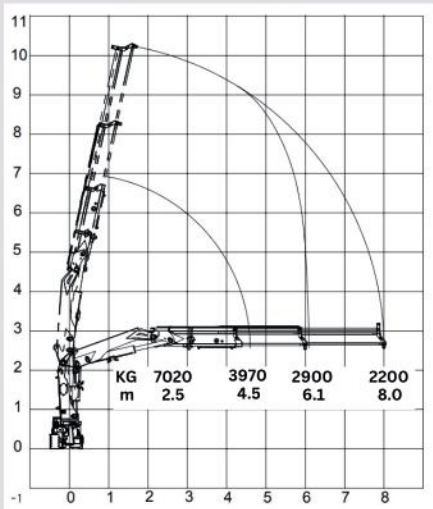
1875 - K1



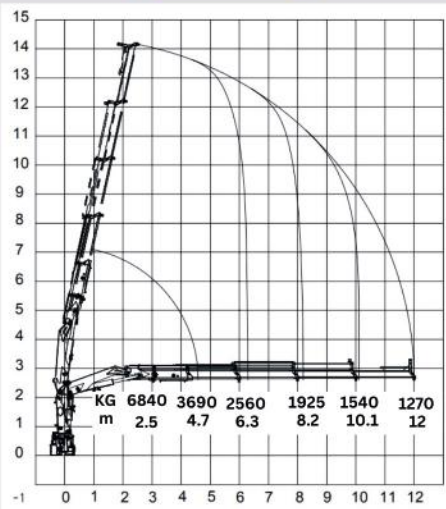
1875 - K3



1875 - K2



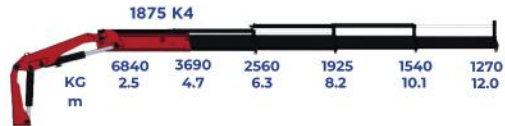
1875 - K4



LOAD DIAGRAMS

Nandan's Knucle Boom Crane can be lifting to 18 ton-m with various configurations
Can be mounted on a 19 ton GVW truck

Contact Nandan GSE before any ordering or finalization. Specifications are indicative and can be changed without notice.



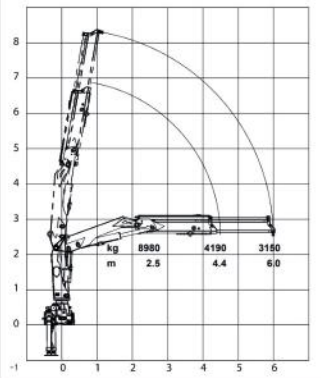
TECHNICAL SPECIFICATIONS

	Units	K1	K2	K3	K4
Load Movement	t-m	17.8	17.5	17.3	17.1
Hydraulic Reach	m	6.0	8.0	10.0	12.0
Lifting Capacity	kg-m	7120 @ 2.5 4055 @ 4.4 2950 @ 6.0	7020 @ 2.5 3970 @ 4.5 2900 @ 6.1 2200 @ 8.0	6930 @ 2.5 3780 @ 4.6 2740 @ 6.2 2050 @ 8.1 1650 @ 10.0	6840 @ 2.5 3690 @ 4.7 2560 @ 6.3 1925 @ 8.2 1540 @ 10.1 1270 @ 12.0
Slewing Angle	Degree	400	400	400	400
Slewing Torque	k-gm	2405	2405	2405	2405
Height above chassis when folded	mm	2203	2203	2203	2203
Width when folded	mm	1014	1014	1014	1014
Stabilizer spread, standard	mm	5100	5100	5100	5100
Standard weight	kg	2050	2250	2410	2530
Working Pressure	bar	300	300	300	300
Oil Flow	L/min	47	47	47	47
Oil tank	Ltr	120	120	120	120

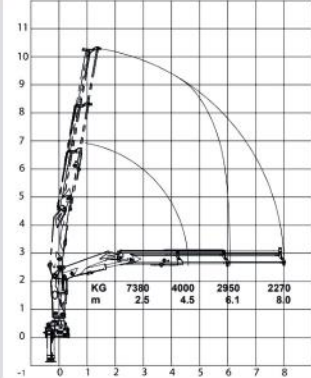
NE-KBC 2075

DIMENSIONS

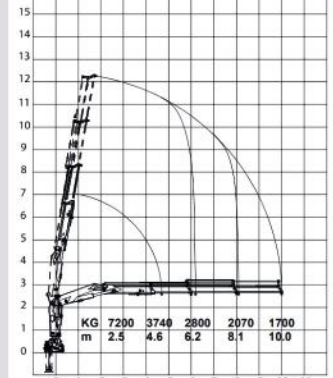
2075 - K1



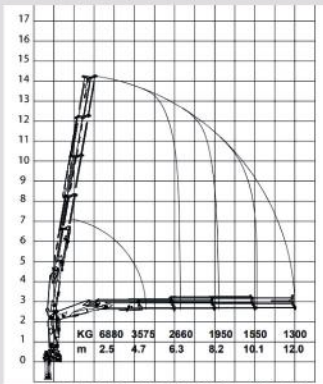
2075 - K2



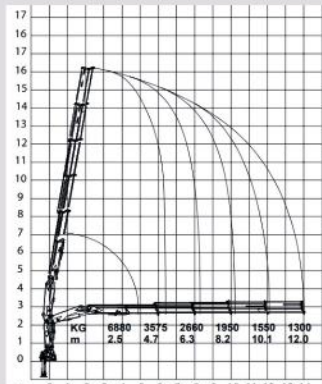
2075 - K3



2075 - K4



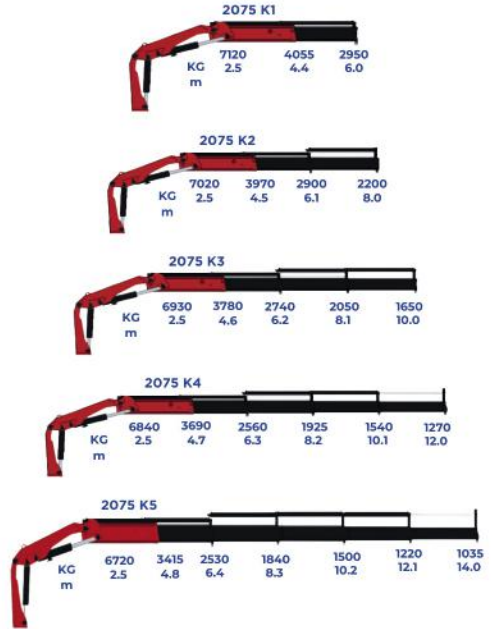
2075 - K5



LOAD DIAGRAMS

Nandan's Knuckle Boom Crane can be lifting to 18 ton-m with various configurations
Can be mounted on a 19 ton GVW truck

Contact Nandan GSE before any ordering or finalization. Specifications are indicative and can be changed without notice.



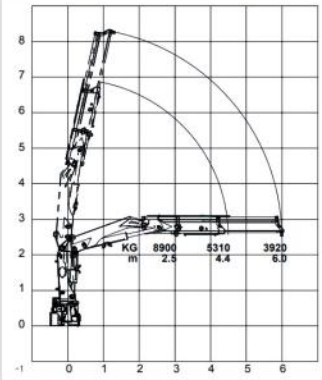
TECHNICAL SPECIFICATIONS

	Units	K1	K2	K3	K4	K5
Load Movement	t-m	18.9	18.4	18	17.2	16.8
Hydraulic Reach	m	6.0	8.0	10.0	12.0	12.0
Lifting Capacity	kg-m	8980 @ 2.5 4190 @ 4.4 3150 @ 6.0	7380 @ 2.5 4000 @ 4.5 2950 @ 6.1 2270 @ 8.0	7200 @ 2.5 3740 @ 4.6 2800 @ 6.2 2070 @ 8.1 1700 @ 10.0	6880 @ 2.5 3575 @ 4.7 2660 @ 6.3 1950 @ 8.2 1550 @ 10.1 1300 @ 12.0	6880 @ 2.5 3575 @ 4.7 2660 @ 6.3 1950 @ 8.2 1550 @ 10.1 1300 @ 12.0
Slewing Angle	Degree	400	400	400	400	400
Slewing Torque	k-gm	2405	2405	2405	2405	2405
Height above chassis when folded	mm	2305	2305	2305	2305	2305
Width when folded	mm	1148	1148	1075	1148	1148
Stabilizer spread, standard	mm	5100	5100	5100	5100	5100
Standard weight	kg	2350	2550	2710	2830	2960
Working Pressure	bar	290	290	290	290	290
Oil Flow	L/min	47	47	47	47	47
Oil Tank	Ltr	140	140	140	140	140

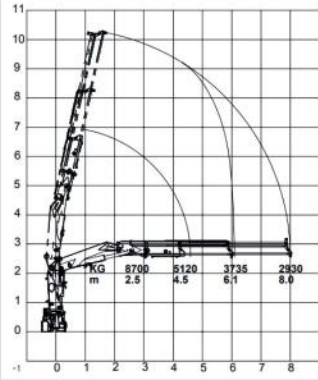
NE-KBC 2475

DIMENSIONS

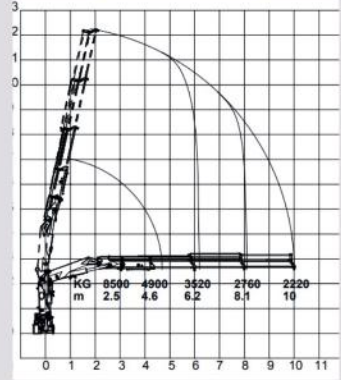
2475 - K1



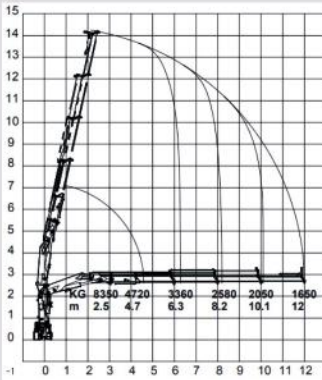
2475 - K2



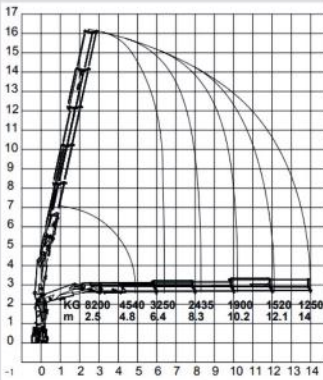
2475 - K3



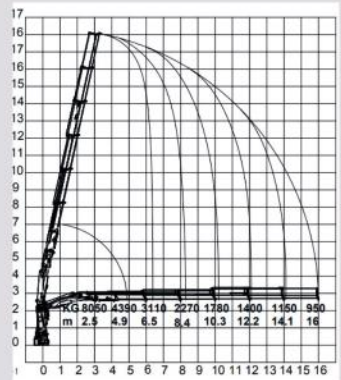
2475 - K4



2475 - K5



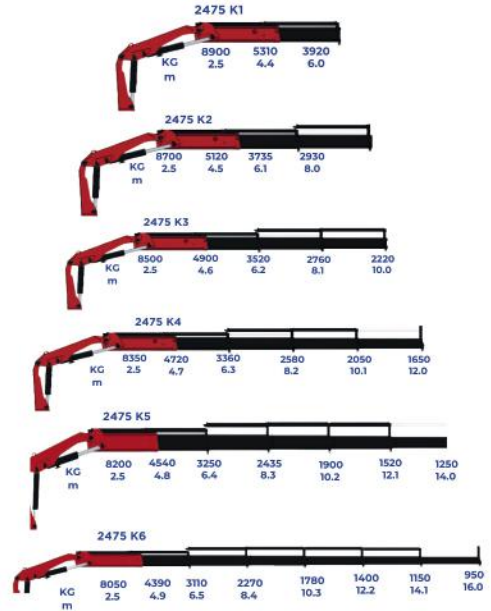
2475 - K6



LOAD DIAGRAMS

Nandan's Knuckle Boom Crane can be lifting to 24 ton-m with various configurations Can be mounted on a 28 ton GVW truck

Contact Nandan GSE before any ordering or finalization. Specifications are indicative and can be changed without notice.

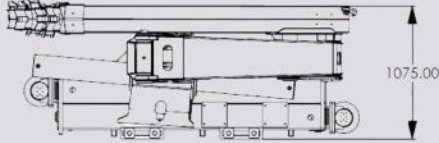
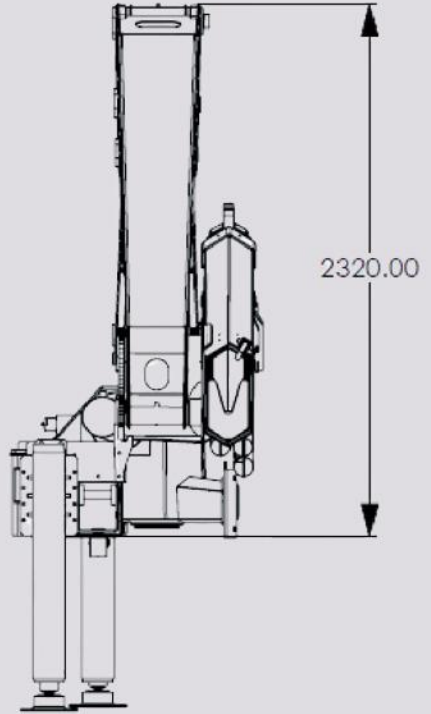
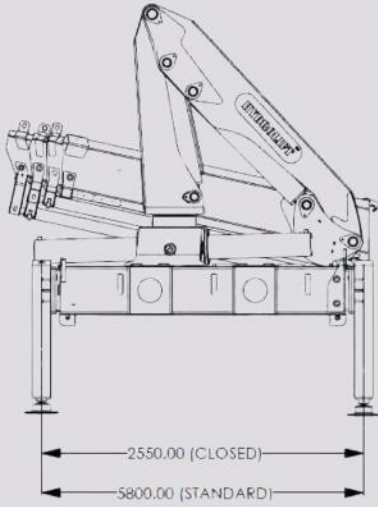


TECHNICAL SPECIFICATIONS

	Units	K1	K2	K3	K4	K5	K6
Load Movement	t-m	22.2	21.7	21.2	20.8	20.5	20.1
Hydraulic Reach	m	6.0	8.0	10.0	12.0	12.0	16.0
Lifting Capacity	kg-m	8900 @ 2.5 5310 @ 4.4 3920 @ 6.0	8700 @ 2.5 5120 @ 4.5 3735 @ 6.1 2930 @ 8.0	8500 @ 2.5 4900 @ 4.6 3520 @ 6.2 2760 @ 8.1 2220 @ 10.0	8350 @ 2.5 4720 @ 4.7 3360 @ 6.3 2580 @ 8.2 2050 @ 10.1 1650 @ 12.0	8200 @ 2.5 4540 @ 4.8 3250 @ 6.4 2435 @ 8.3 1900 @ 10.2 1520 @ 12.1 1250 @ 14.0	8050 @ 2.5 4390 @ 4.9 3110 @ 6.5 2270 @ 8.4 1780 @ 10.3 1400 @ 12.2 1150 @ 14.1 950 @ 16.0
Slewing Angle	Degree	400	400	400	400	400	400
Slewing Torque	k-gm	2800	2800	2800	2800	2800	2800
Height above chassis when folded	mm	2305	2305	2305	2305	2305	2305
Width when folded	mm	1152	1152	1152	1152	1152	1152
Stabilizer spread, standard	mm	5100	5100	5100	5100	5100	5100
Standard weight	kg	3420	3420	3420	3420	3420	3420
Working Pressure	bar	300	300	300	300	300	300
Oil Flow	L/min	60	60	60	60	60	60
Oil Tank	Ltr	160	160	160	160	160	160

NE-KBC 3275

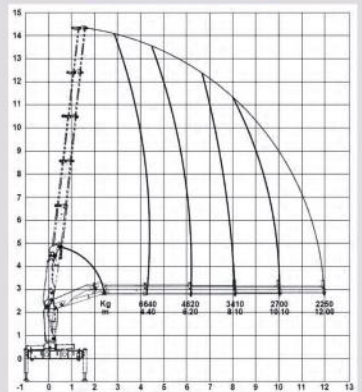
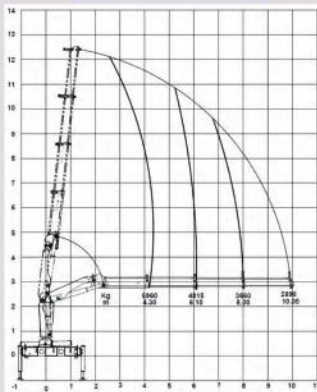
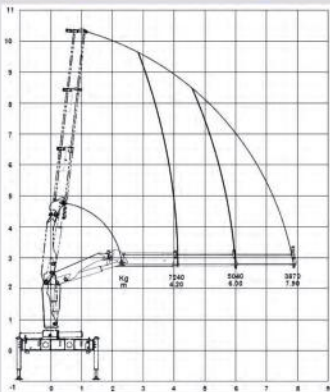
DIMENSIONS



3275 - K2

3275 - K3

3275 - K4



LOAD DIAGRAMS

Nandan's Knuckle Boom Crane can be lifting to 31 ton-m with various configurations
Can be mounted on a 32 ton GVW truck

Contact Nandan GSE before any ordering or finalization. Specifications are indicative and can be changed without notice.

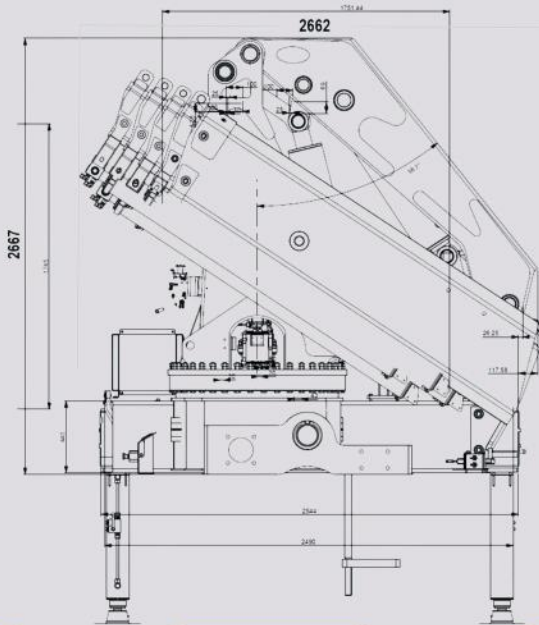


TECHNICAL SPECIFICATIONS

	Units	K2	K3	K4
Load Movement	t-m	31.7	31	30.5
Hydraulic Reach	m	7.95	10.0	12.0
Lifting Capacity	kg-m	8260 @ 3.5 7240 @ 4.2 5040 @ 6.0 3870 @ 7.9	8210 @ 3.5 6960 @ 4.3 4815 @ 6.1 3660 @ 8.0 2890 @ 10.0	8170 @ 3.5 6640 @ 4.4 4620 @ 6.2 3410 @ 8.1 2700 @ 10.1 2250 @ 12.0
Slewing Angle	Degree	400	400	400
Slewing Torque	k-gm	3875	3875	3875
Height above chassis when folded	mm	2320	2320	2320
Width when folded	mm	1075	1075	1075
Stabilizer spread, standard	mm	5800	5800	5800
Standard weight	kg	3350	3750	3950
Working Pressure	bar	310	310	310
Oil Flow	L/min	64	64	64
Oil Tank	Ltr	200	200	200

NE-KBC 4275

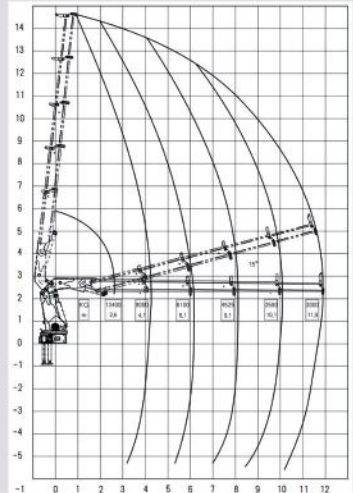
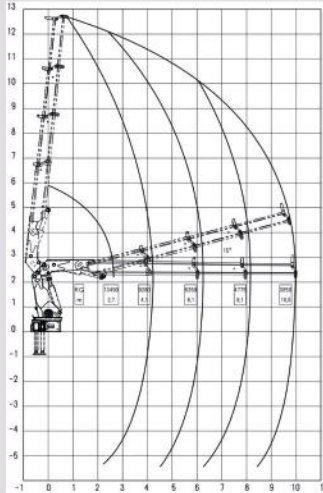
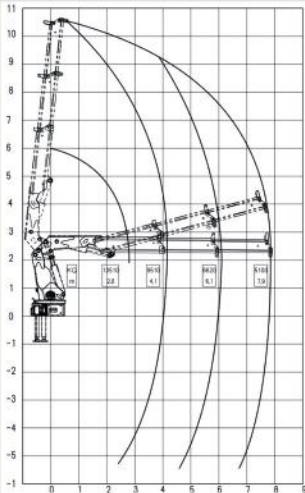
DIMENSIONS



4275 - K2

4275 - K3

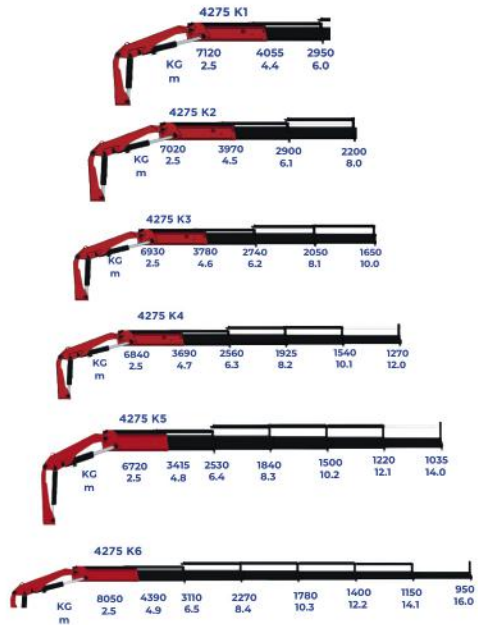
4275 - K4



LOAD DIAGRAMS

Nandan's Knuckle Boom Crane can be lifting to 42 ton-m with various configurations
Can be mounted on a 42 ton GVW truck

Contact Nandan GSE before any ordering or finalization. Specifications are indicative and can be changed without notice.



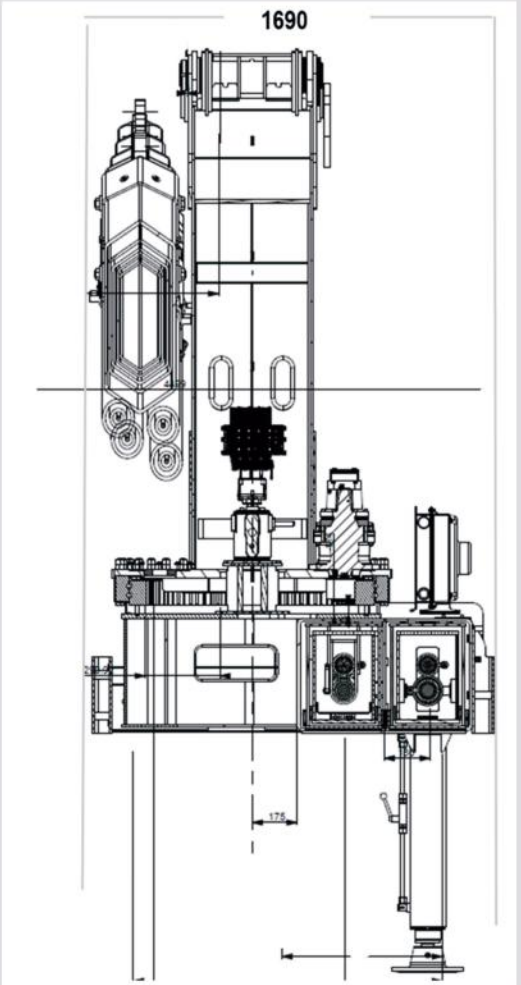
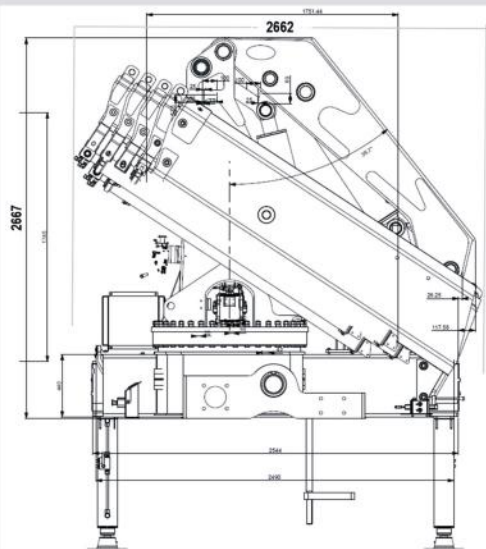
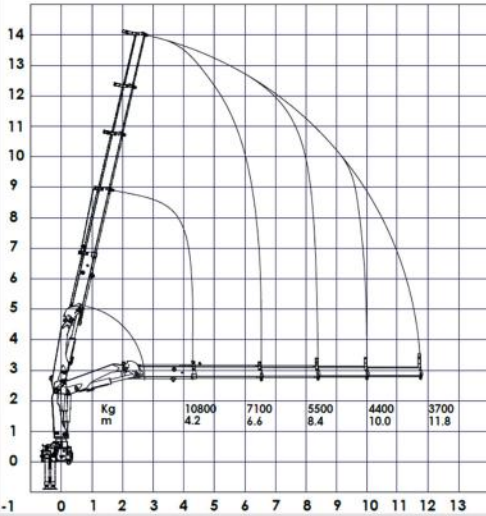
TECHNICAL SPECIFICATIONS

	Units	K1	K2	K3	K4	K5	K6
Load Movement	t-m	42	42	42	42	42	42
Hydraulic Reach	m	6.0	8.0	10.0	12.0	14.0	16.0
Lifting Capacity	kg-m	8900 @ 2.5 5310 @ 4.4 3920 @ 6.0	8700 @ 2.5 5120 @ 4.5 3735 @ 6.1 2930 @ 8.0	8500 @ 2.5 4900 @ 4.6 3520 @ 6.2 2760 @ 8.1 2220 @ 10.0	8350 @ 2.5 4720 @ 4.7 3360 @ 6.3 2580 @ 8.2 2050 @ 10.1 1650 @ 12.0	8200 @ 2.5 4540 @ 4.8 3250 @ 6.4 2435 @ 8.3 1900 @ 10.2 1520 @ 12.1 1250 @ 14.0	8050 @ 2.5 4390 @ 4.9 3110 @ 6.5 2270 @ 8.4 1780 @ 10.3 1400 @ 12.2 1150 @ 14.1 950 @ 16.0
Slewing Angle	Degree	400	400	400	400	400	400
Slewing Torque	k-gm	2800	2800	2800	2800	2800	2800
Height above chassis when folded	mm	2305	2305	2305	2305	2305	2305
Width when folded	mm	1152	1152	1152	1152	1152	1152
Stabilizer spread, standard	mm	5100	5100	5100	5100	5100	5100
Standard weight	kg	3420	3420	3420	3420	3420	3420
Working Pressure	bar	300	300	300	300	300	300
Oil Flow	L/min	60	60	60	60	60	60
Oil Tank	Ltr	160	160	160	160	160	160

NE-KBC 4875

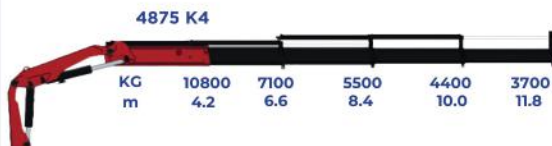
DIMENSIONS

4875 - K4



LOAD DIAGRAMS

Nandan's Knuckle Boom Crane can be lifting to 48 ton-m with various configurations Can be mounted on a 48 ton GVW truck



Contact Nandan GSE before any ordering or finalization. Specifications are indicative and can be changed without notice.

TECHNICAL SPECIFICATIONS

	Units	K2	K3	K4
Load Movement	t-m	48	48	48
Hydraulic Reach	m	8.0	10.0	11.8
Lifting Capacity	kg-m	10900 @ 4.2 7700 @ 6.0 6000 @ 8.0	10200 @ 4.3 7400 @ 6.0 5800 @ 8.0 4650 @ 10.0	10000 @ 4.2 7100 @ 6.6 5500 @ 8.4 4400 @ 10.0 3700 @ 11.8
Slewing Angle	Degree	Continuous	Continuous	Continuous
Height above chassis when folded	mm	2667	2667	2667
Width when folded	mm	1690	1690	1690
Length when folded	mm	2662	2662	2662
Weight w/o Oil Tank	Kg	4550	4725	4900
Working Pressure	bar	340	340	340
Oil Flow	L/min	60-80	60-80	60-80
Tank	Ltr	250	250	250

PROCESSES



Designing



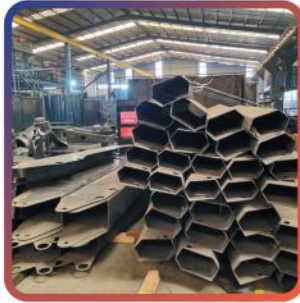
Laser Cutting



Plasma Cutting



MIG Welding



Fabrication



Shot Blasting



Paint Booth



Baking Chamber



Assembly Shop

ABOUT NANDAN GSE



Vision

Be the leading designer & manufacturer of Specialized Handling Solutions in the world, making it a safer place.



Mission

Help our customers improve their Productivity, Performance & Safety by providing optimum products & solutions in terms of quality, reliability, delivery & life of a product at the highest of customer satisfaction



Core Purpose

Equip our customers with solutions & utilize the potential of mankind towards greater actions instead of manual handling



250+
People



25+
Countries Served



10,000+
Equipment Delivered



10 Billion
Saved for Customers

INDUSTRIES



ENERGY & OIL



AGRICULTURE



AEROSPACE & DEFENSE



CEMENT



CONSTRUCTION



PAPER



INFRASTRUCTURE



TUNNEL CONSTRUCTION & MAINTENANCE



GAS HANDLING



AIRFORCE



ARMY



NAVY



LOGISTICS



SCRAP & RECYCLING



RAILWAYS

SOME OF OUR CLIENTS



UPLIFTING THE WORLD

Discover the power of innovation with Nandan GSE's truck-mounted cranes, designed for excellence in transport, construction, mining, material handling, and environmental services.

Our state-of-the-art solutions drive productivity, enhance safety, and deliver unmatched reliability across industries.



Scan for a Virtual
Plant Visit



NANDAN
**LOADING &
UNLOADING**
SOLUTIONS

Nandan GSE Pvt Ltd
Nandan House,
D205, TTC Industrial Area,
Turbhe MIDC, Navi Mumbai,
Maharashtra 400705
+91-8691030319



sales@nandan.co.in