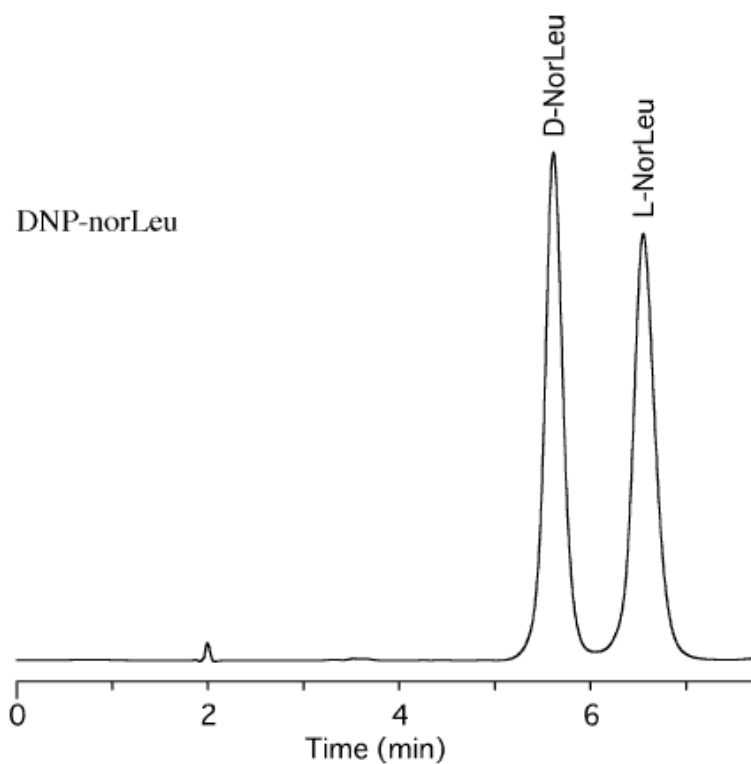


## Analysis of 2,4-DNP-Norleucine (norLeu)

Data No. LA391-0000



Column : Bioptic AV-1  
5 $\mu$ m  
150  $\times$  4.6 mmI.D.

Column Cat. No. : 5020-02511

Eluent : MeCN / 50mM phosphate buffer (pH6.6) = 10 / 90 (w / w)

Flow rate : 1.0 mL/min.

Col. Temp. : 40°C

Detection : UV 254 nm

Injection Vol. : 2 $\mu$ L

Sample : 2,4-DNP derivatives

Solutes : 1. DNP-D-norLeu  
2. DNP-L-norLeu