

## OFFERING MEMORANDUM

# FLEX BUILDING - FOR SALE

201 N. Troup Street, Valdosta, GA 31601

**FOR SALE: \$1,750,000**



**25,522 SF | 2.44 ACRES | BUILT IN 1980**

## CONTACTS

State Broker:

**SCOTT ALDERMAN**

License #: 109748

First Commercial Real Estate

229.561.1939 | [fcre@surfsouth.com](mailto:fcre@surfsouth.com)

**DAN LYNCH**

BellCornerstone

315.498.1600

[dlynch@bellcornerstone.com](mailto:dlynch@bellcornerstone.com)

**BRIAN ROSSI**

BellCornerstone

315.935.3162

[brossi@bellcornerstone.com](mailto:brossi@bellcornerstone.com)



## OFFERING MEMORANDUM

# 201 N. TROUP STREET

Valdosta, GA 31601

---

### DISCLAIMER

The information contained in the following Offering Memorandum has been prepared to provide a summary of unverified information to prospective buyers or tenants and to establish only a preliminary level of interest in the subject property. The information contained herein is not a substitute for a thorough due diligence investigation.

Prospect agrees that the proposed sale price and its terms, and any negotiations or discussions with respect to the transaction (collectively, "Confidential Information") are confidential. Prospect agrees that it shall, and that it shall cause Prospect's representatives to, maintain and protect the confidentiality of all Confidential Information. Further, Prospect agrees that it shall not, and that it shall cause its representatives to not, disclose any Confidential Information to anyone other than individuals working on Prospect's behalf directly or in connection with the proposed transaction who have agreed to be bound by the provisions of this paragraph.







# Table of Contents

<b>EXECUTIVE SUMMARY</b>	<b>4</b>
<b>MARKET OVERVIEW</b>	<b>5</b>
<b>DEMOGRAPHICS</b>	<b>6</b>
<b>LOCATION OVERVIEW</b>	<b>7</b>
<b>SITE OVERVIEW</b>	<b>8</b>
<b>PARCEL OVERVIEW</b>	<b>9</b>
<b>FLOOR PLANS</b>	<b>10</b>
<b>PICTURES</b>	<b>13</b>



## EXECUTIVE SUMMARY

# 201 N. TROUP STREET

## Valdosta, GA 31601

---

201 N Troup Street is an office warehouse building that was built in 1980 and is situated on a 2.44-acre lot. The property is comprised of a single-story 25,522 square feet building, including approximately 17,160 square feet of office space and 8,362 square feet of warehouse space. The property is in a prime location and presents an exciting investment/owner-user opportunity with several noteworthy features providing flexibility to accommodate a wide range of businesses.





# MARKET OVERVIEW

## Valdosta, Georgia

Valdosta-Lowndes County is a vibrant, growing community in south Georgia, midway between Atlanta and Orlando. Known as the “Capital of South Georgia”, the 4-county MSA had  $\pm 160,000$  residents in 2022, and a 12-county trade area of  $\pm 500,000$ . About 60,000 vehicles/day on Interstate 75 bring millions of visitors, shoppers, and employees, making this “Gateway to Florida” a favorite stopping and shopping point. A very strong tertiary market, it has a diverse economy driven by manufacturing, distribution, education, military, health care, hospitality and agriculture. A robust, growing mix of industries includes several additions in the last five years. Adding \$2 billion to the local economy are: Valdosta State University (11,500 students, 1800 employees); Moody Air Force Base (10,700 military, civilians and dependents); and South Georgia Medical Center (2100 employees). They bring a cosmopolitan blend to the local population, contributing educated, dedicated community leaders from around the globe. Valdosta Regional Airport has daily jet flights to/from Atlanta. The closest international airports are Tallahassee (80 miles) and Jacksonville (120 miles). Decades of success in local sports led to Valdosta’s first famous label – “Winnersville, USA”, later followed by ESPN’s crowning as its first-ever “Tittletown, USA” winner. This winning attitude has inspired public and private leaders to aim high for success here. Visitors come here for Wild Adventures Theme Park; a thriving, historic downtown; and Grand Bay Wildlife Management Area, providing outdoor recreation.



# DEMOGRAPHIC SUMMARY

VALDOSTA, GA  
METROPOLITAN STATISTICAL AREA

## POPULATION

Valdosta MSA

**151,118**

State: Georgia 10.91 Million

## MEDIAN AGE

Valdosta MSA

**34.7 years**

State: Georgia 37 Years

## MEDIAN HOUSEHOLD INCOME

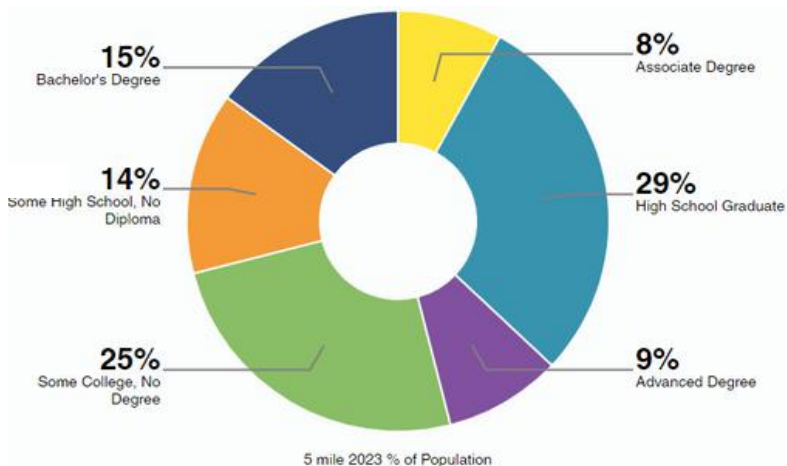
Valdosta MSA

**\$51,926**

State: Georgia 71,355

## EDUCATIONAL ATTAINMENT

Highest level of education among people aged 25 years and older as 80% more or less than Georgia at large.



## 2024 STATISTICS

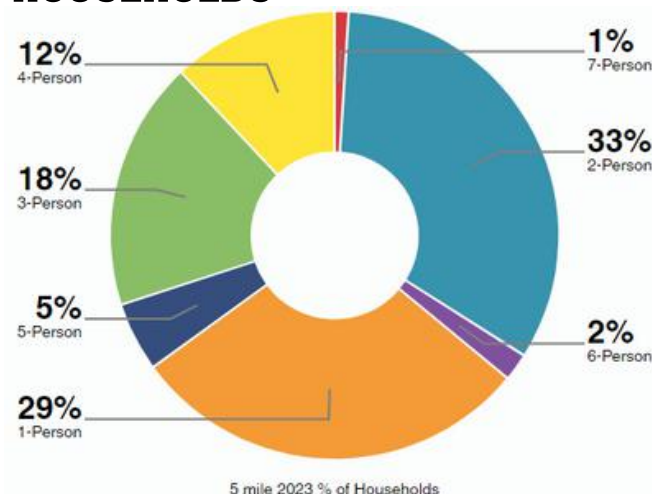
	2 Mile	5 Mile	10 Mile
Population 2024	27,836	64,116	101,120
Total Households	9,835	24,501	37,450
Avg Household Size	2.5	2.5	2.6
Avg Household Income	\$41,318	\$58,164	\$64,781

## ECONOMIC INDICATORS

**4.6%** Valdosta  
Unemployment Rate

**4.1%** U.S.  
Unemployment Rate

## HOUSEHOLDS



Valdosta MSA

**42,666**

State: Georgia 3.946 Million



Average  
Household Size





# LOCATION OVERVIEW



## HIGHWAY ACCESS

**Interstate 75 (I-75):** I-75, the most significant highway running through Valdosta, it connects the city directly to major metropolitan areas such as Atlanta to the north and Tampa to the south. This interstate is crucial for both commercial and leisure travel, making Valdosta an accessible destination for travelers heading to and from Florida.

**U.S. Highway 84 (US 84):** US 84 runs through Valdosta, providing an essential east-west route across southern Georgia. It connects Valdosta to cities like Thomasville to the west, and Waycross to the east. This highway serves as a vital link for agricultural and industrial transport, connecting local businesses to markets across the state.

**U.S. Highway 41 (US 41):** US 41 runs parallel to I-75, offering an alternative north-south route. It passes through downtown Valdosta and connects to smaller communities in the area and is significant for local traffic, providing access to businesses, schools, and residential areas along its route.

**Interstate 10 (I-10):** I-10 is an east-west highway that runs across the southern U.S., stretching from Jacksonville, Florida, to Los Angeles, California.



## AIRPORT PROXIMITY

**Valdosta Regional Airport (VLD):** Located approximately 4 miles south of downtown Valdosta, VLD is the primary airport serving the city and surrounding areas. It offers commercial flights, providing access to a wide range of domestic and international destinations. The airport is also equipped for general aviation, accommodating private and corporate aircraft. It features services such as maintenance, fueling, and hangar rentals, making it a convenient option for both commercial and private travelers.

**Tallahassee International Airport (TLH):** Located approximately 80 miles southwest of Valdosta, in Tallahassee, TLH is the closest major airport to Valdosta, offering a wider range of commercial flights, including connections to major hubs like Atlanta, Dallas/Fort Worth, and Miami.

**Jacksonville International Airport (JAX):** Located approximately 120 miles southeast of Valdosta, in Jacksonville, FL, JAX is a larger airport offering extensive flight options, including numerous domestic flights and some international connections.

**Hartsfield-Jackson Atlanta International Airport (ATL):** Located approximately 230 miles north of Valdosta, in Atlanta. As one of the busiest airports in the world, ATL offers an extensive network of domestic and international flights.



# SITE OVERVIEW

## SITE

Property Type:	Office/Warehouse
Building Class:	C
Zoning:	C-H (Highway Commercial)
Parcel #:	0118D 236, 0118D 235, 0118D 234, 0118D 233, 0118D 242, 0118D 241
Year Built:	1980
Total SF:	25,522 SF Office Space: 17,160 SF Warehouse Space: 8,362 SF
Stories:	1
Total Acreage:	2.44
Parking:	60 Surface Spaces
Construction:	Masonry
Eave Height:	15'
Dock Doors:	2







# PARCEL OVERVIEW

## BUILDING SPECIFICATIONS

**Building Size: 25,522 SF Total**

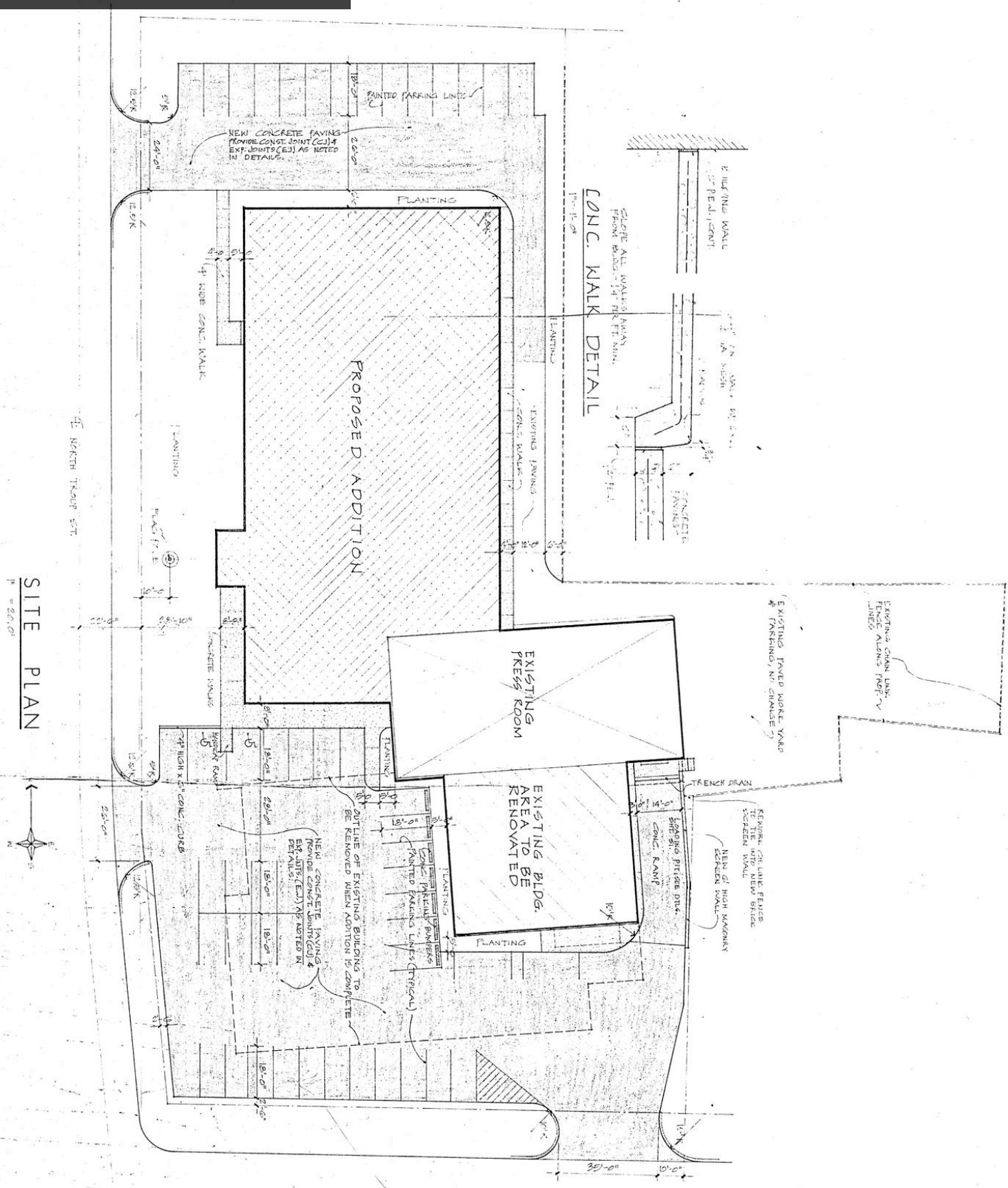
- Office Space: 17,160 SF
- Warehouse Space: 8,362 SF

**Acreage: 2.44 acres**

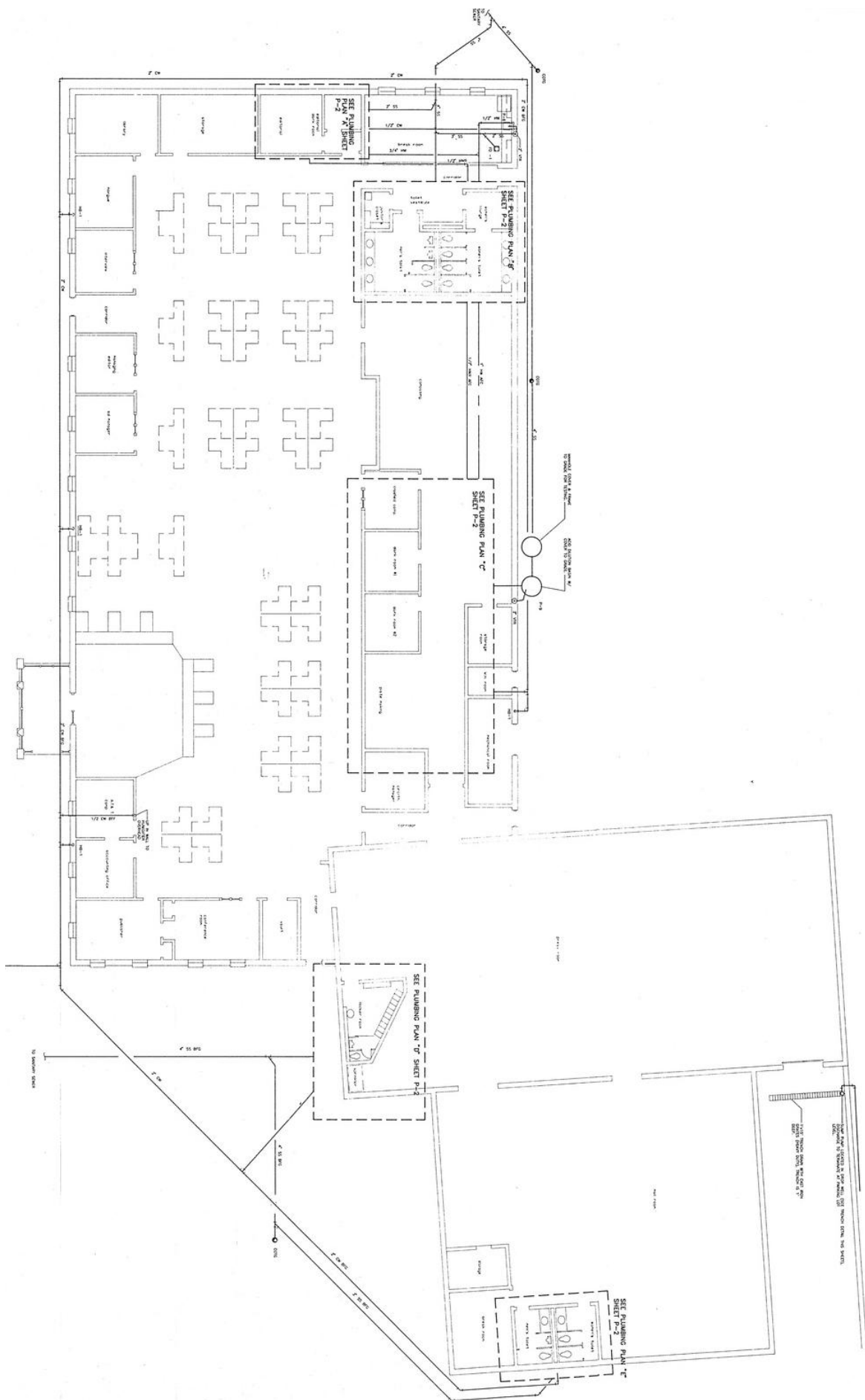
**Year Built: 1980**



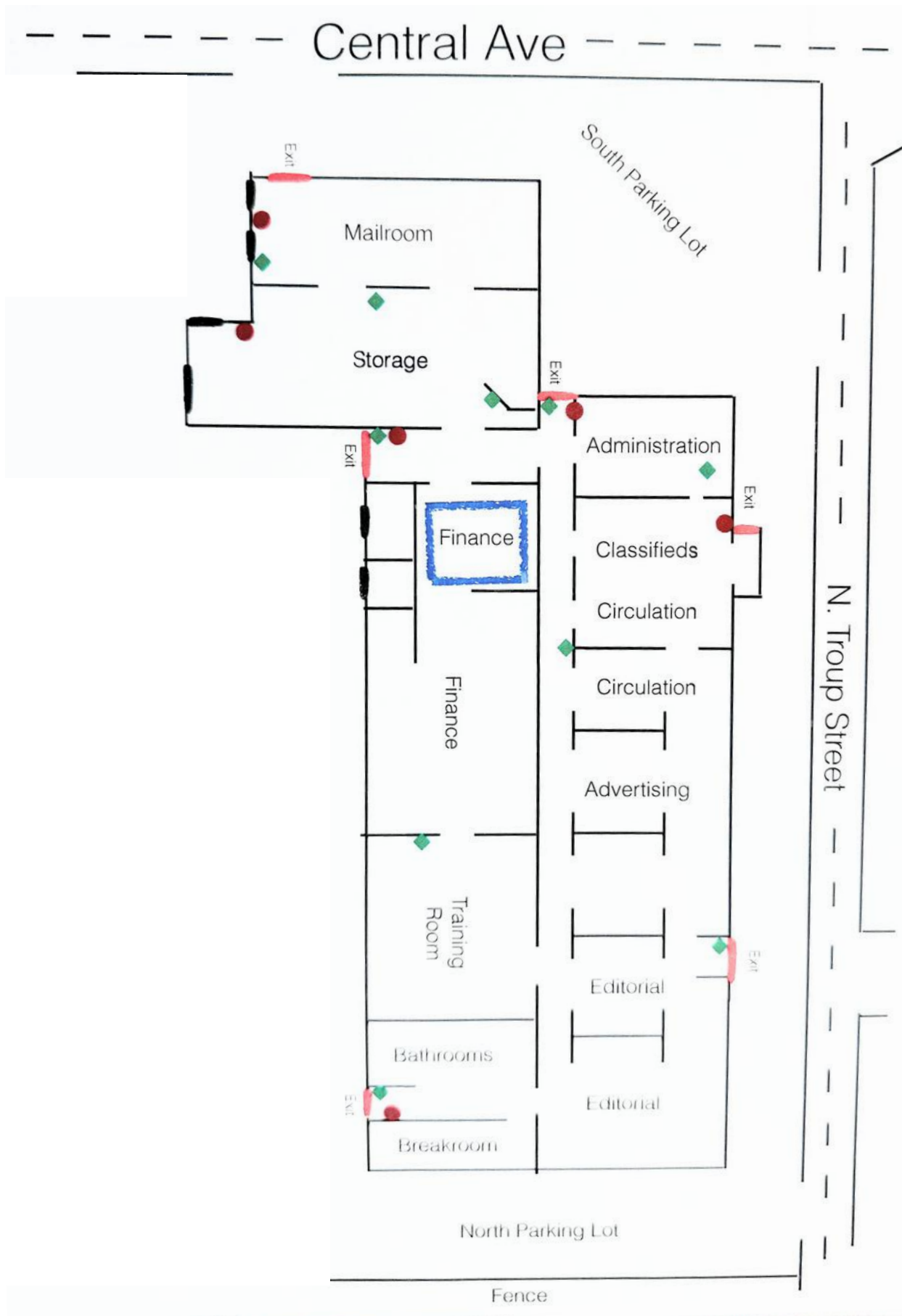
# FLOOR PLANS

























**5X** TOP SALES  
POWER  
BROKER

**BELL**CORNERSTONE  
Commercial Real Estate

2019 2020 2021  
2022 2023

**BELL**CORNERSTONE  
Commercial Real Estate

**We Sell BIG  
Buildings. *FAST.***

**[www.BellCornerstone.com](http://www.BellCornerstone.com)**

