

PORTFOLIO 2026  
ARCHITECT

JUAN MANUEL  
CORREDOR  
OVALLE



**JUAN MANUEL  
CORREDOR OVALLE**  
ARCHITECT

Master's Candidate in  
Construction

jcorredoro@unal.edu.co

3042927790

Bogotá, Colombia

**PORTFOLIO LINKS:**

<https://heyzine.com/fljp-book/>

[www.behance.net/jcorredoro](http://www.behance.net/jcorredoro)

**LINKDIN:**

[linkedin.com/in/jcorredoro](https://www.linkedin.com/in/jcorredoro)

**EXPERIENCE**

- **EXPONENT CONSTRUCTION** – Architect / BIM Lead
  - August 2025 – Present
- Responsibilities
  - Architectural design for residential and commercial projects in the United States.
  - Development and coordination of technical documentation and drawing sets.
  - BIM leadership in the transition of workflows from Revit to BricsCAD.
  - Collaboration with marketing on architecture- and construction-related social media content.
- Achievements
  - Supported the standardization of BIM processes and team documentation.
  - Strengthened technical coordination and production workflows under international standards.
- **ESPAZIOS** - Site Supervisor
  - February 2025 – August 2025
- Responsibilities
  - On-site supervision for the renovation of 4 to 5 apartments per month, from shell-and-core stage to finishes.
  - Technical site supervision, quality control, and coordination with contractors.
  - Progress tracking, support with reports and budgets, and direct client interaction.
- Achievements
  - Contributed to the technical and operational execution of multiple ongoing renovation projects.
  - Strengthened experience in site supervision, construction coordination, and client service.
- **LAPG ARQUITECTOS CONSTRUCTORES** - Architect
  - November 2022 – December 2024
- Responsibilities
  - Development of architectural design and graphic representation for projects.
  - Preparation of architectural drawings and support in technical documentation.
  - Participation in site supervision and construction budgeting.
  - Support in permitting procedures and documentation for construction licenses and IDPC processes.
- Achievements
  - Developed architectural proposals approved by the team.
  - Strengthened skills in design, site supervision, budgeting, and document management.

**ABOUT ME**

Architect and Master's candidate in Construction, with experience in architectural design, technical documentation, and project development in the United States, as well as construction site experience in Colombia. My work focuses on developing sustainable, functional, and constructively efficient solutions, with a strong interest in smart material modulation and process optimization. I am characterized by integrating design, technical development, and management in every project, coordinating teams and ensuring quality, feasibility, and overall coherence in each proposal.

**EDUCATION**

- **Master's in Construction** (currently in final semester)
  - Universidad Nacional de Colombia, Bogotá Campus
- **Architect**
  - Universidad Nacional de Colombia, Bogotá Campus
- **High School Diploma**
  - Colegio Emilio Valenzuela, 2017

**LANGUAGES**

- **Portuguese – Advanced**
  - Certificate from Instituto de Cultura Brasil (IBRACO)
  - CELPE-BRAS B2
- **English – Advanced**
  - Cambridge English Language Assessment Certificate
- **Spanish – Native**

**SKILLS**

**TECHNICAL**

**Technical Drawing & Architectural Modeling**

- REVIT
- AutoCAD
- Rhinoceros
- BricsCAD
- Morpholio

**Editing & Post-Production**

- Photoshop
- Illustrator
- Procreate
- AI Rendering
- Lumion

**INTERPERSONAL**

**Leadership & Collaborative Work**

- Leadership
- Teamwork
- Staff Management
- Resilience
- Empathy
- Curiosity

**PROFESSIONAL REFERENCES**

- **Natalia Calderón** - Manager, Exponent Construction
  - +1 7745205997
- **Ethan Desota** - Manager, Exponent Construction
  - +1 8108746463
- **Luis Alfonso Pérez Gómez** - ManagerLAPG
  - +57 3138417490
- **Miguel Ángel Bautista** - Human Resources Manager, LAPG
  - +57 3208729515
- **Catherin Y. Zik Oppenheimer** - Portuguese Professor
  - +57 3144163390

## PARTICIPATION IN EXPONENT CONSTRUCTION PROJECTS

### • RESIDENTIAL PROJECTS

#### • 51 Brooklyn

- Architectural Design
- MEP Design
- Drawing Set

#### • Masonic

- Architectural Design
- MEP Design
- Drawing Set

#### • 3 Hollis Basement

- Architectural Design
- MEP Design
- Drawing Set

### • COMMERCIAL PROJECTS

#### • COMMERCIAL PROJECT #1

- Architectural Design
- MEP Design
- Drawing Set

#### • COMMERCIAL PROJECT #2

- Architectural Design
- MEP Design
- Drawing Set

Note: Some commercial projects are presented without brand identification due to confidentiality and corporate image rights restrictions.

## PARTICIPATION IN LAPG OFFICE PROJECTS

#### • Infirmary – Casa General de Gobierno Hijas Dominicanas de Nuestra Señora de Nazareth, Bogotá, Colombia

- Architectural Design
- MEP Design
- Budgeting
- Construction

#### • 7 de Agosto Building, Bogotá, Colombia

- Architectural Design
- Construction permit documentation for Curaduría
- IDPC documentation due to the influence area of a cultural heritage asset

#### • Casa Izquierdo Villa de Leyva, Boyacá

- MEP design and septic system
- Architectural Drafting

#### • Productive Housing in Chocó

- Architectural Design
- Poster post-production for competition submission

## INDEPENDENT PROJECTS

#### • Fusagasugá Country House

- Architectural Design
- Structural System Design
- MEP Design
- Construction

## ACADEMIC PROJECTS

#### • Cultural Center in Simón Bolívar Park, Bogotá, Colombia

- Vertical Design Studio Project - 8th semester

#### • Habitable Interstice, Bogotá, Colombia

- Housing Studio I

#### • Temple House, Sopó, Cundinamarca

- Housing Studio II

## MASTER'S ACADEMIC PROJECTS

#### • Choachí Cabin

- Materials course with emphasis on wood

# PARTICIPATION IN EXPONENT CONSTRUCTION PROJECTS

Residential Project

51 Brooklyn

Canterbury, Connecticut, USA

*Residential project developed through the relationship between spatial openness, material warmth, and technical resolution for construction documentation.*

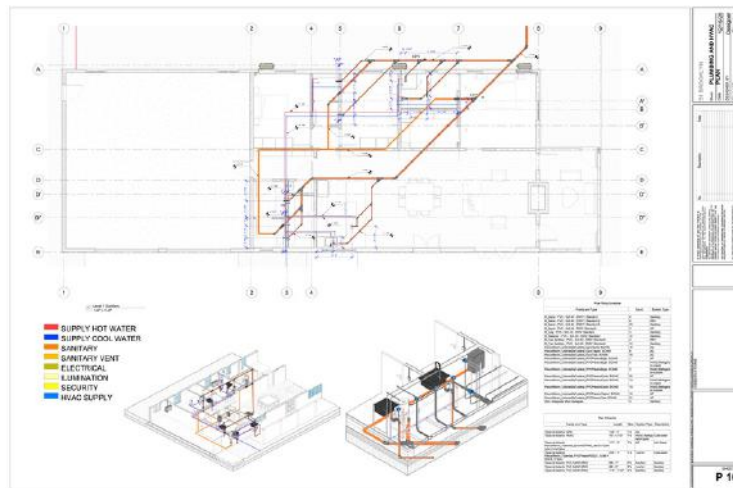
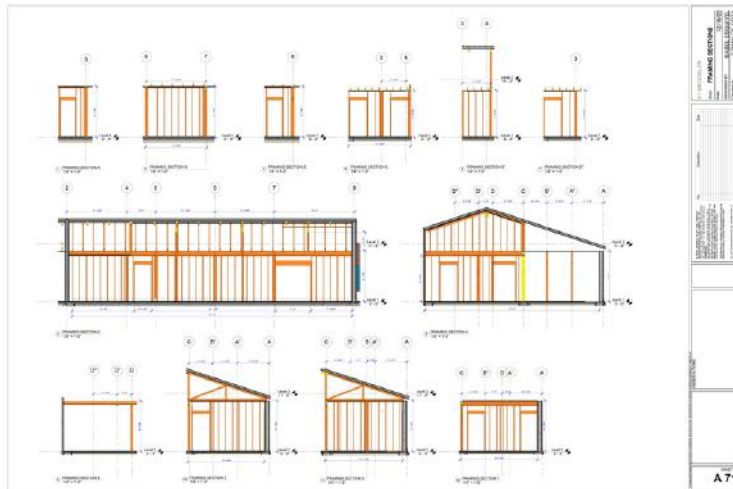
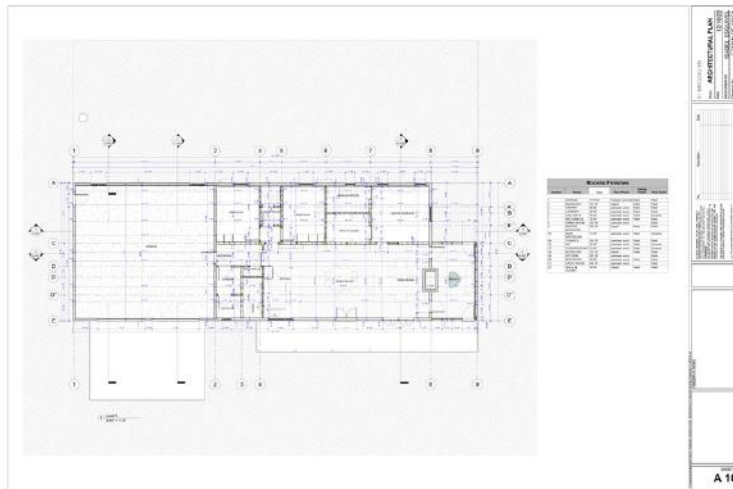
## Role

Participation in the project's development through architectural design, MEP design, and BIM modeling for the preparation of the drawing set.

## Contributions

- Residential architectural design
- MEP design
- BIM modeling and technical documentation

THE WORK PRESENTED HAS BEEN INCLUDED IN THIS PORTFOLIO WITH AUTHORIZATION FROM THE RESPONSIBLE OFFICE AND ITS AUTHORS.



ARCHITECTURAL DRAWINGS



RENDERS



JOBSITE PHOTOS

# PARTICIPATION IN EXPONENT CONSTRUCTION PROJECTS

Residential Project

98 Masonic Home Rd

Charlton, Massachusetts, USA

*Residential project developed through the adaptation of an existing structure, the functional expansion of the program, and its technical resolution for construction documentation.*

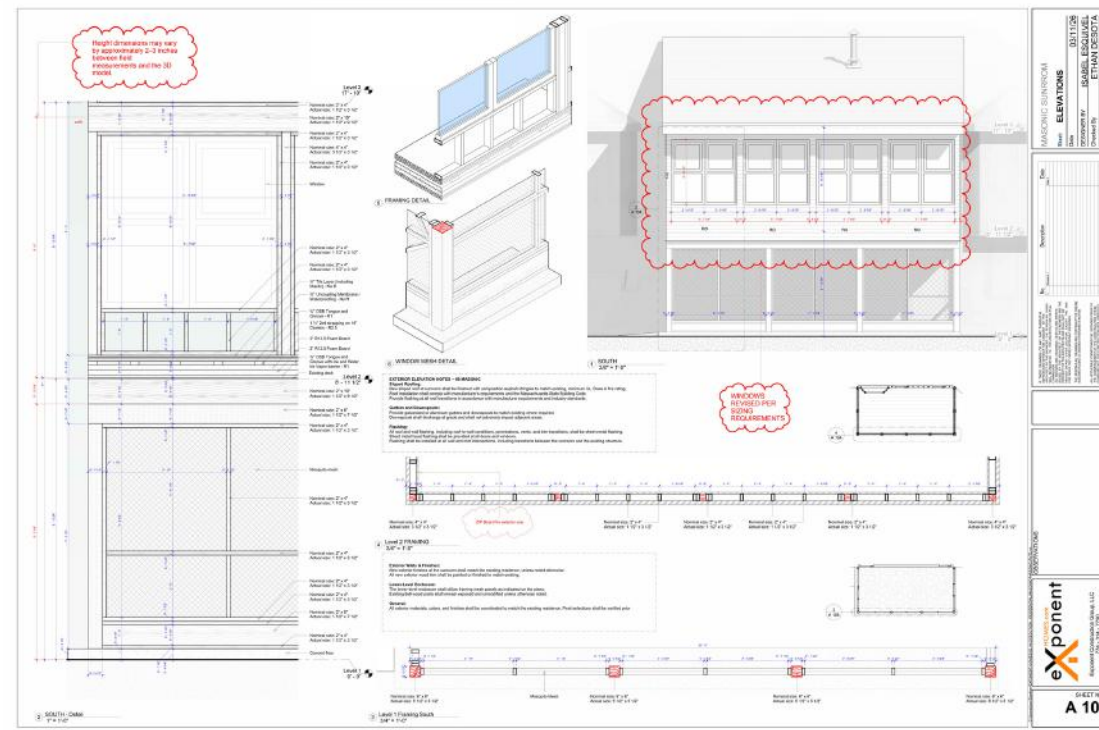
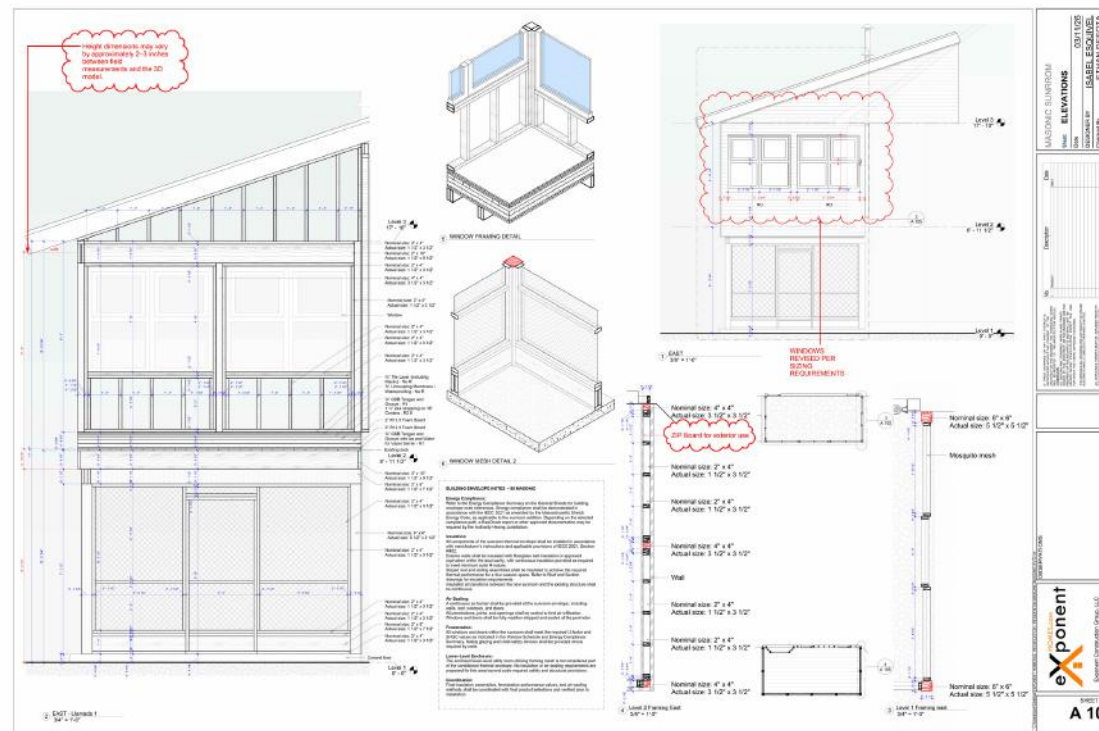
## Role

Participation in the architectural and technical development of a residential addition, including spatial design, MEP coordination, and BIM modeling for the production of the drawing set.

## Contributions

- Residential architectural design
- MEP design
- BIM modeling and technical documentation

THE WORK PRESENTED HAS BEEN INCLUDED IN THIS PORTFOLIO WITH AUTHORIZATION FROM THE RESPONSIBLE OFFICE AND ITS AUTHORS.



RENDERS

ARCHITECTURAL DRAWINGS

# PARTICIPATION IN EXPONENT CONSTRUCTION PROJECTS

Residential Project

3 Hollis St Basement

Westerly, Rhode Island, USA

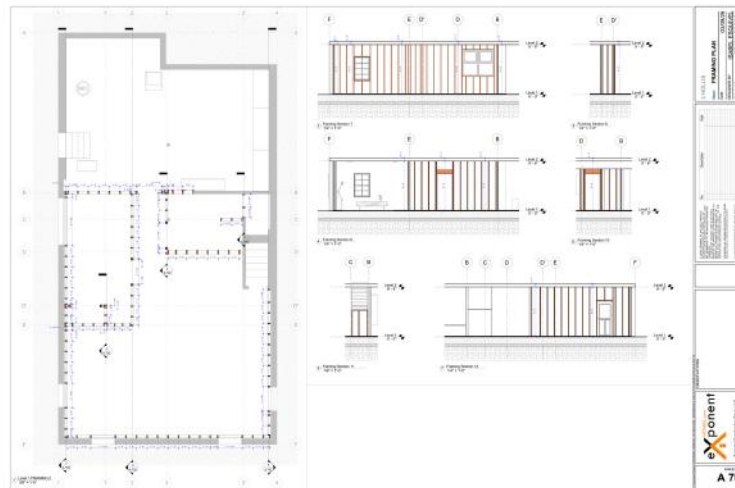
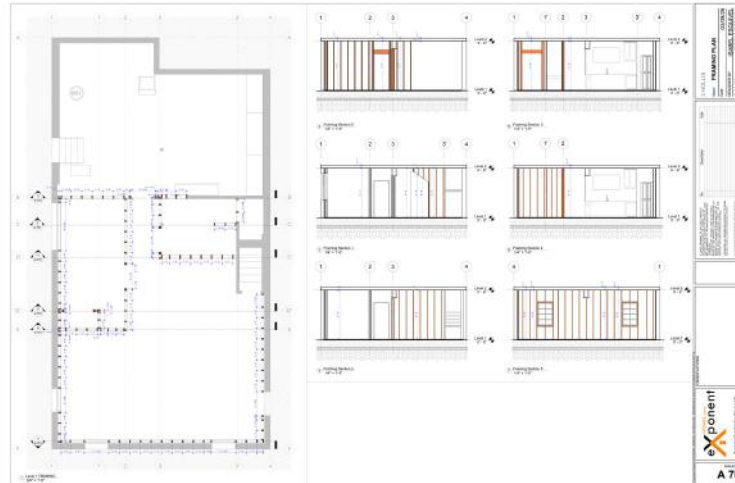
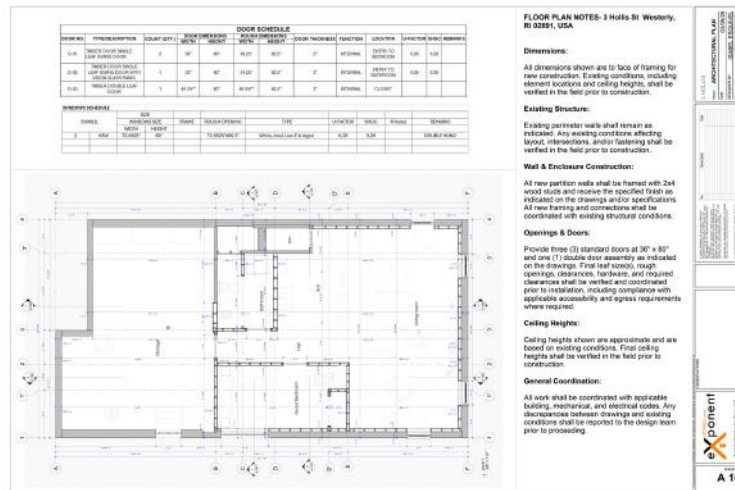
*Residential project developed through the functional adaptation of an existing space and its technical resolution for construction documentation.*

## Role

Participation in the architectural and technical development of the project, including spatial design, MEP coordination, and BIM modeling for the preparation of the drawing set.

## Contributions

- Residential architectural design
- MEP design
- BIM modeling and technical documentation



ARCHITECTURAL DRAWINGS



RENDERS

THE WORK PRESENTED HAS BEEN INCLUDED IN THIS PORTFOLIO WITH AUTHORIZATION FROM THE RESPONSIBLE OFFICE AND ITS AUTHORS.

# PARTICIPATION IN EXPONENT CONSTRUCTION PROJECTS

Commercial Project

Commercial Space – 1422 6th Ave

New York, New York, USA

*Commercial project developed through the integration of brand identity, operational efficiency, and technical resolution for construction documentation.*

## Role

Participation in the architectural and technical development of the project, including spatial design, MEP coordination, BIM modeling, and preparation of the drawing set for construction.

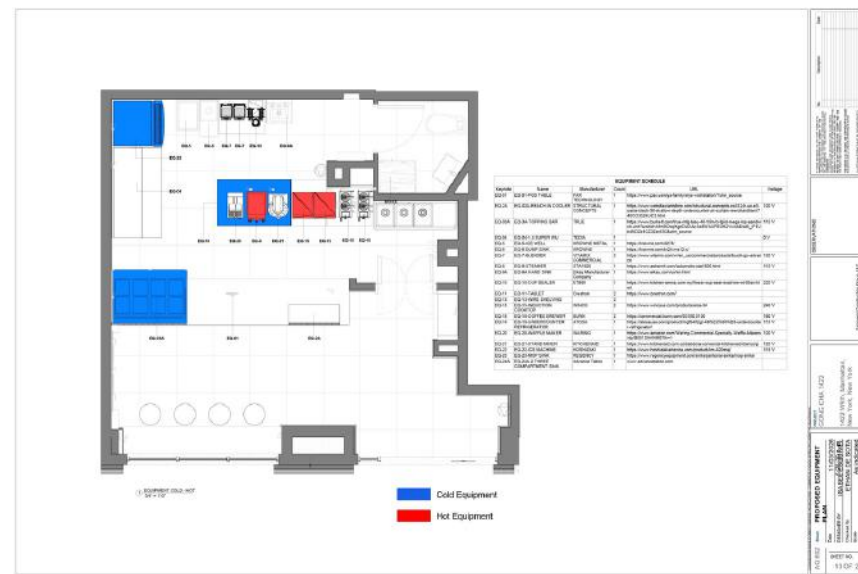
## Contributions

- Commercial architectural design
- MEP and equipment coordination
- BIM modeling and technical documentation

THE WORK PRESENTED HAS BEEN INCLUDED IN THIS PORTFOLIO WITH AUTHORIZATION FROM THE RESPONSIBLE OFFICE AND ITS AUTHORS.



SOCIAL MEDIA CONTENT



ARCHITECTURAL DRAWINGS

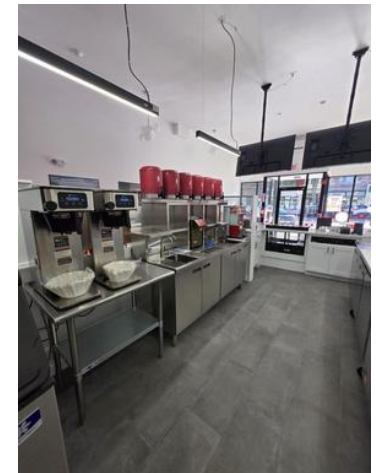


RENDERS

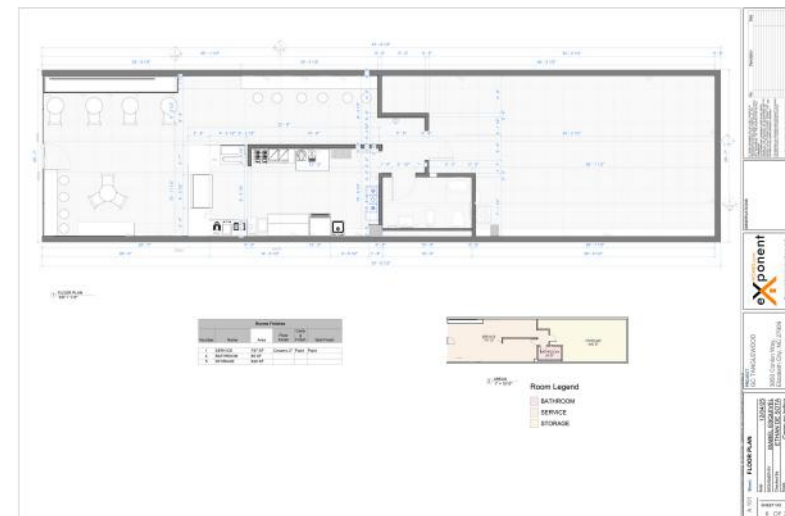
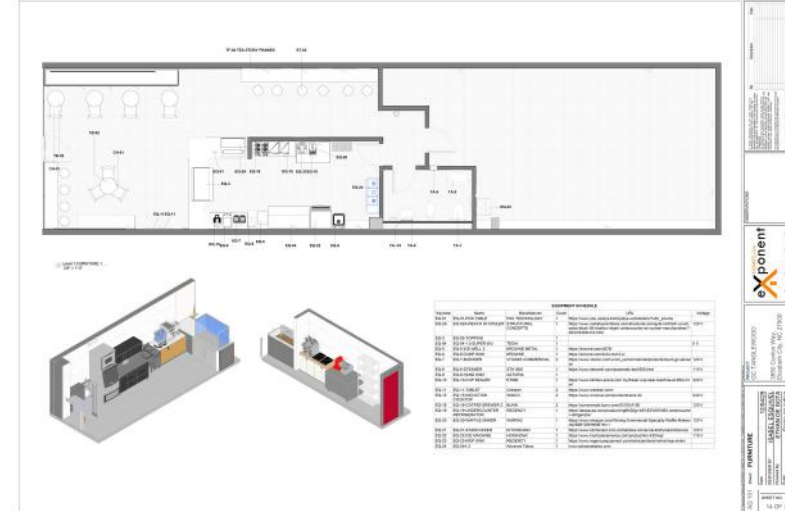
# PARTICIPATION IN EXPONENT CONSTRUCTION PROJECTS



RENDERS



BUILT WORK EXAMPLES



ARCHITECTURAL DRAWINGS

*Commercial project developed through the integration of brand identity, operational efficiency, and technical resolution for construction documentation.*

## Role

Participation in the architectural and technical development of the project, including spatial design, MEP coordination, BIM modeling, and preparation of the drawing set for construction.

## Contributions

- Commercial architectural design
- MEP and equipment coordination
- BIM modeling and technical documentation

THE WORK PRESENTED HAS BEEN INCLUDED IN THIS PORTFOLIO WITH AUTHORIZATION FROM THE RESPONSIBLE OFFICE AND ITS AUTHORS.

# PARTICIPATION IN LAPG OFFICE PROJECTS

Infirmary

Casa General de Gobierno Hijas Dominicanas de Nuestra Señora de Nazareth

Bogotá, Colombia

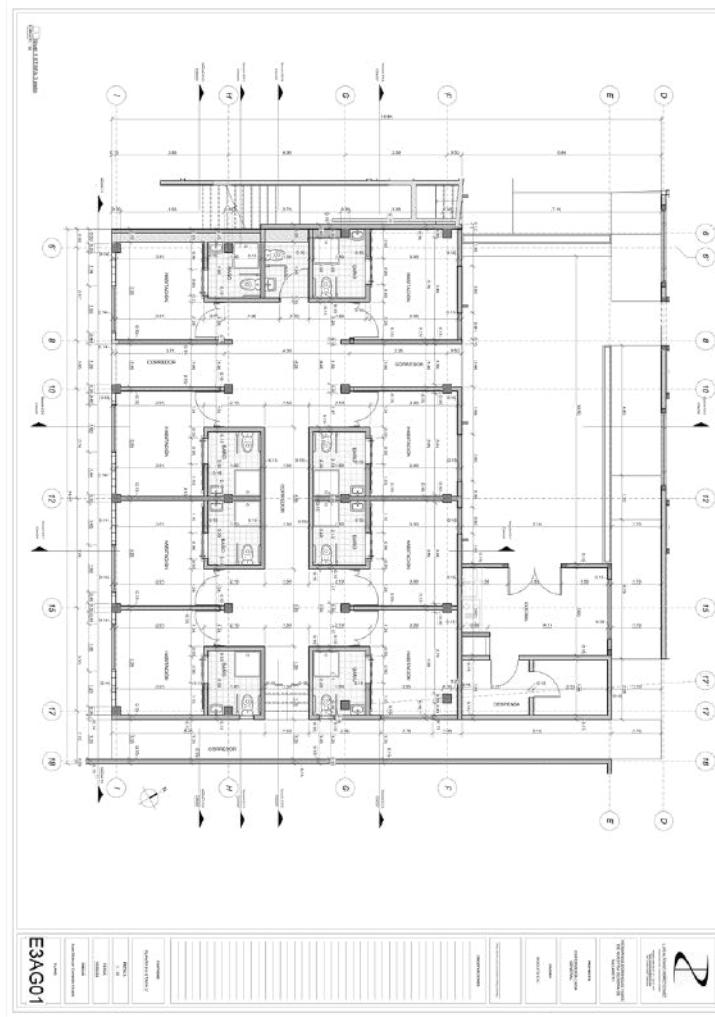
*Institutional project developed through the integration of architectural design, MEP systems, and construction execution.*

## Role

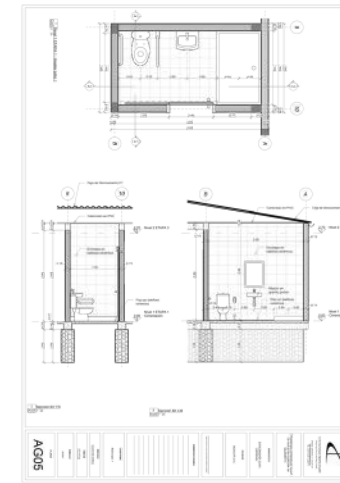
Participation in the project's technical development through support in architectural design, MEP coordination, and budget preparation.

## Contributions

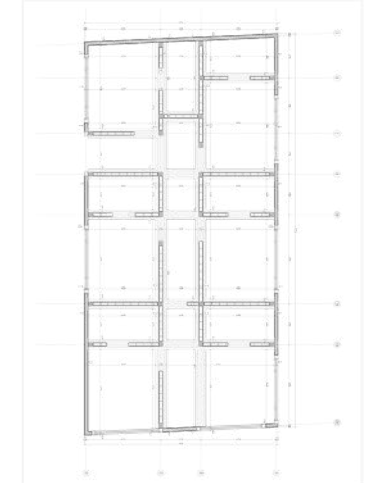
- Architectural solutions
- Plumbing and electrical systems
- Civil works budgeting



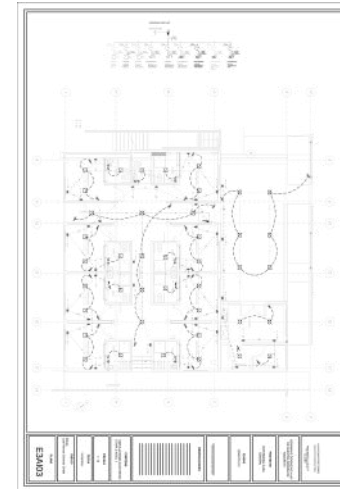
ARCHITECTURAL DRAWINGS



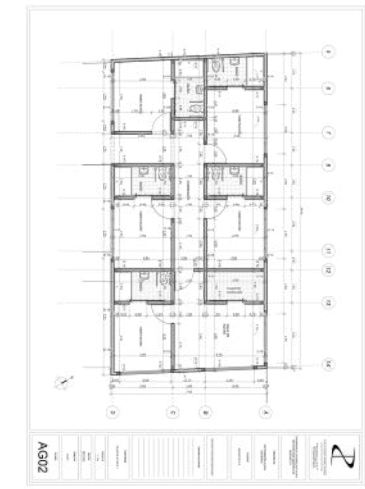
FINISH DETAILS



DRAWINGS FOR ON-SITE ASSEMBLY



MEP DRAWINGS

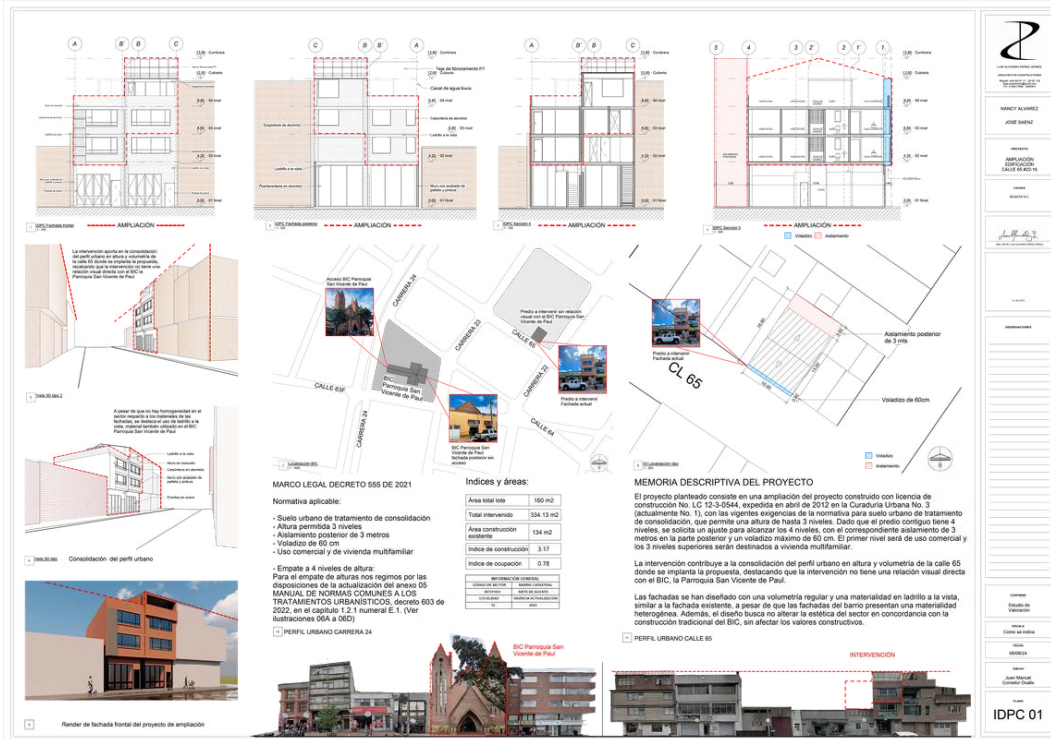
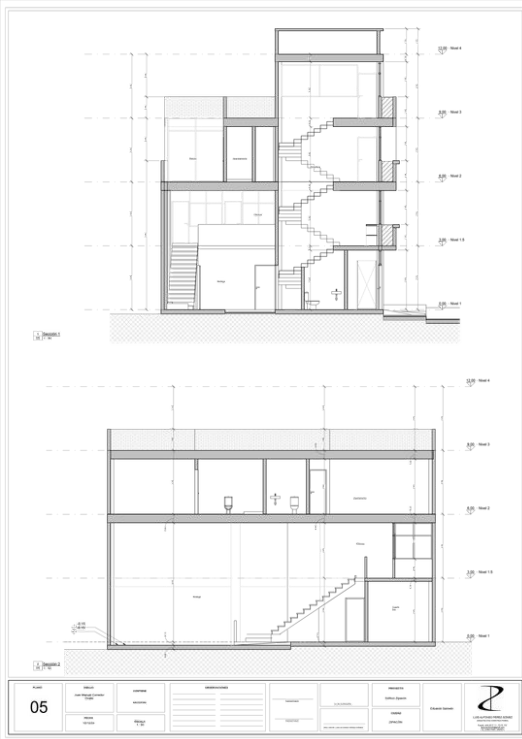


ARCHITECTURAL DRAWINGS – PHASE 1



JOB SITE PHOTOS





**PARTICIPATION IN LAPG OFFICE PROJECTS**

Construction Permit and IDPC Filing  
(District Institute of Cultural Heritage)

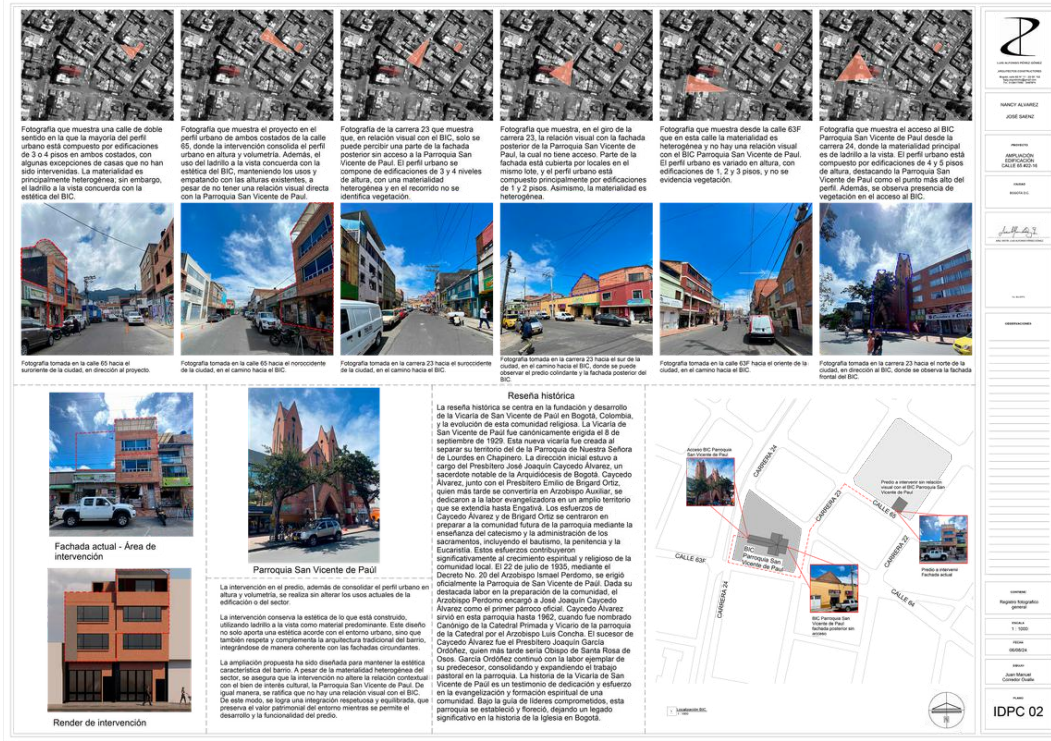
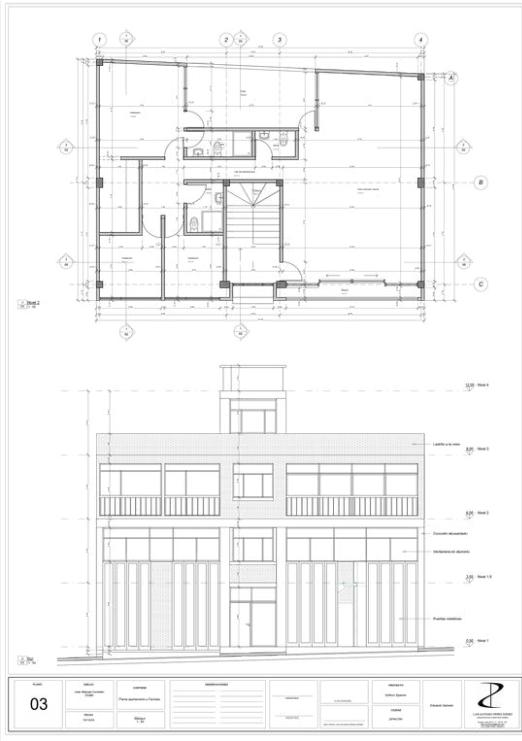
7 de Agosto Building

Bogotá, Colombia

*Institutional project developed through the integration of architectural design, permit management, and heritage context coordination.*

ARCHITECTURAL DRAWINGS

SHEETS FOR IDPC FILING



**Role**

Participation in the project's technical development through architectural design, construction permit management under an addition permit scope, and preparation of the documentation required for filing with the IDPC, ensuring the project's proper integration with its heritage context.

**Contributions**

- Architectural design
- Construction permit management
- Documentation and presentation sheets for IDPC filing

THE WORK PRESENTED HAS BEEN INCLUDED IN THIS PORTFOLIO WITH AUTHORIZATION FROM THE RESPONSIBLE OFFICE AND ITS AUTHORS.

PARTICIPATION IN LAPG OFFICE PROJECTS

Architectural and MEP Design

Casa Izquierdo

Villa de Leyva, Colombia

*Project developed through the integration of MEP design, technical resolution, and graphic support for its execution.*

**Role**

Participation in the project's technical development through MEP design, definition of construction details, and support in architectural representation.

**Contributions**

- MEP design
- Septic system
- Construction details and architectural drafting

THE WORK PRESENTED HAS BEEN INCLUDED IN THIS PORTFOLIO WITH AUTHORIZATION FROM THE RESPONSIBLE OFFICE AND ITS AUTHORS.

**CONJUNTO DE VIVIENDA RURAL PRODUCTIVA Y AUTOSUFICIENTE**



COMPETITION BOARD

**Role**

Participation in the architectural development of a proposal adapted to the local context, along with graphic post-production of the presentation material for competition submission.

**Contributions**

- Contextual architectural design
- Site analysis and environmental adaptation
- Poster and render post-production

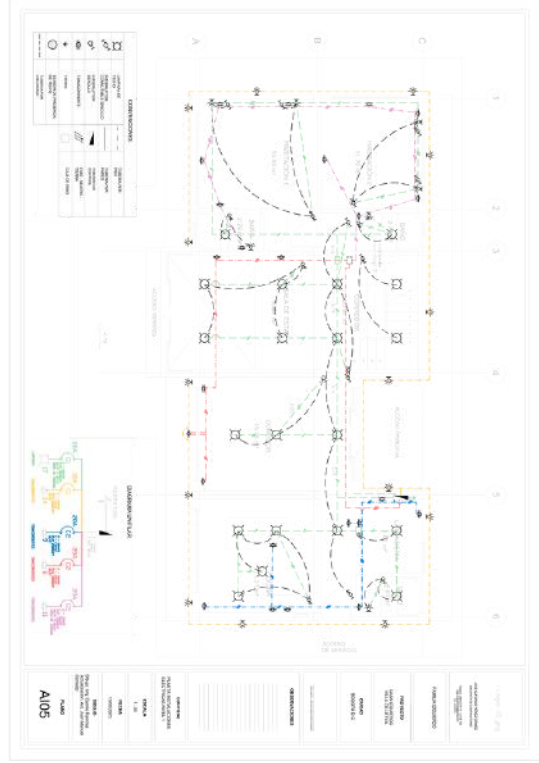
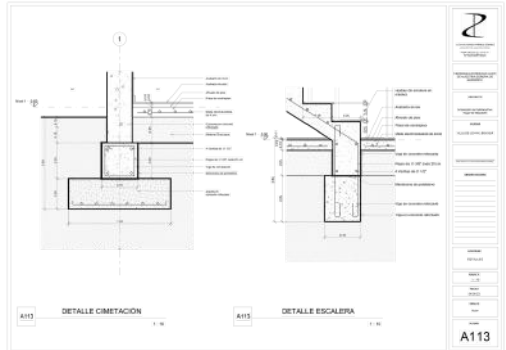
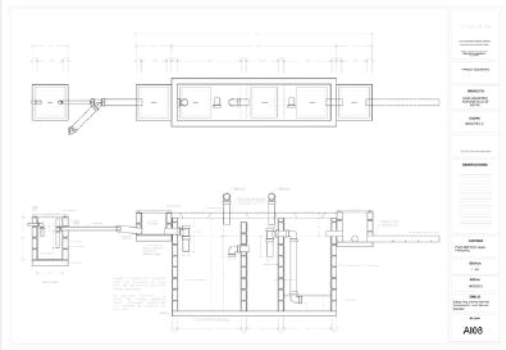
Architectural Design and Competition Board

Productive Housing in Chocó

Colombia

Architectural proposal for competition submission and funding

THE WORK PRESENTED HAS BEEN INCLUDED IN THIS PORTFOLIO WITH AUTHORIZATION FROM THE RESPONSIBLE OFFICE AND ITS AUTHORS.



ARCHITECTURAL DRAWINGS

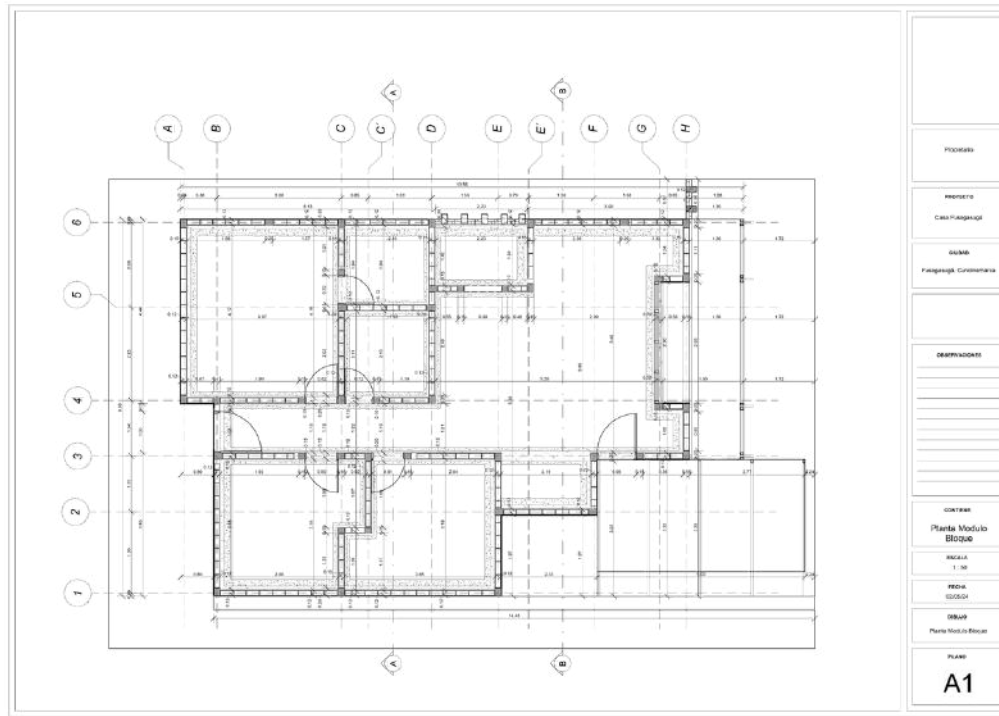
# INDEPENDENT PROJECTS

Single-Family Residence

Casa Campestre Fusa

Fusagasugá, Colombia

*Independent project developed through cost-efficiency criteria, construction modulation, and technical performance.*



ARCHITECTURAL DRAWINGS

## Role

Comprehensive project development through architectural, structural, and MEP design, with a focus on modulation, cost optimization, and construction efficiency.

## Contributions

- Modular architectural design
- Structural and construction optimization
- Strategic concentration of MEP systems



RENDERS



JOBSITE PHOTOS

University Project

Cultural Center in Simón Bolívar Park

Bogotá, Colombia

*Academic project developed through the relationship between architecture, urban context, and the technical resolution of design.*

**Role**

Development of the architectural project based on contextual analysis and the progressive design of its spatial and constructive components, including technical representation in plans, sections, and details.

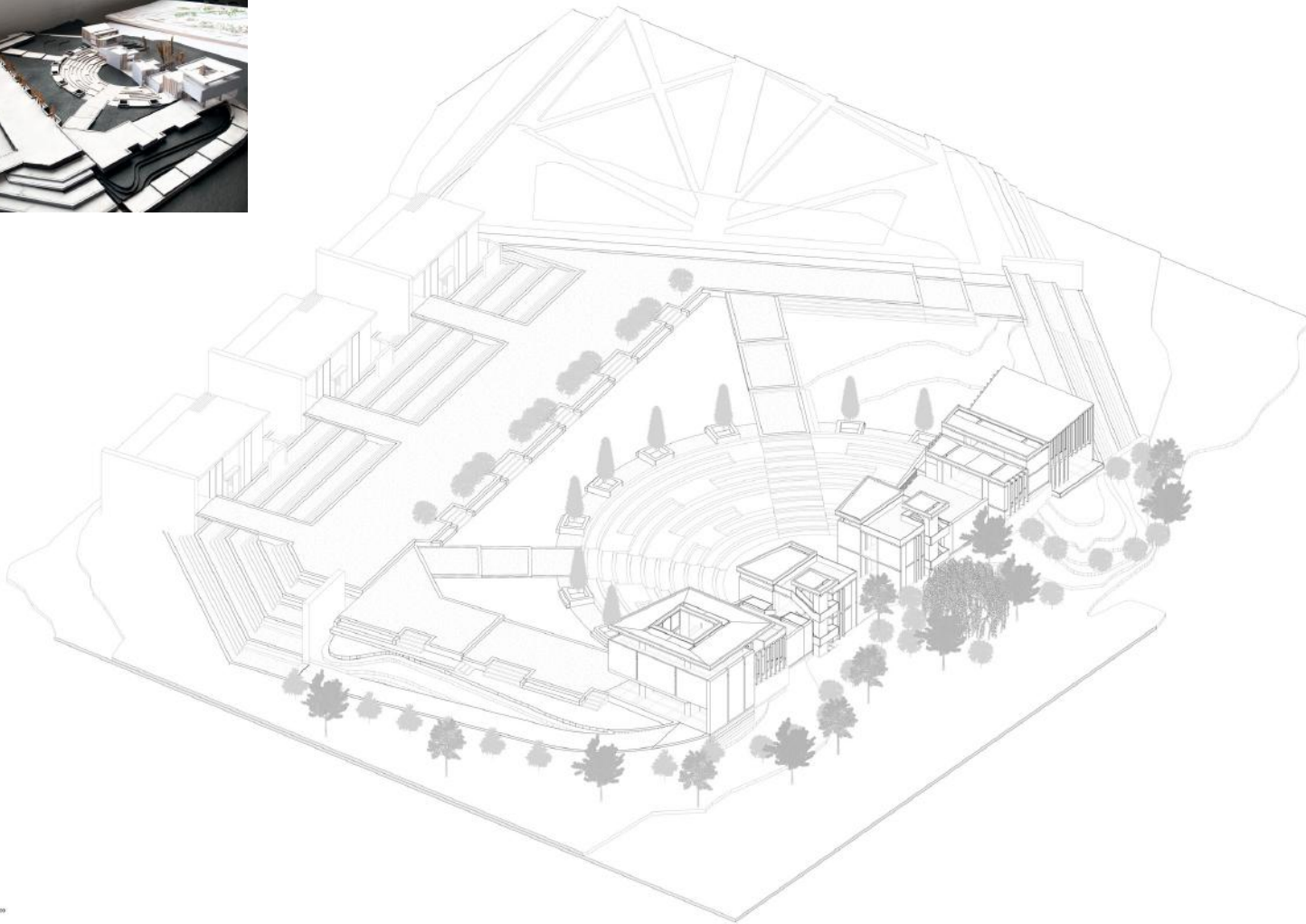
**Contributions**

- Contextual architectural design
- Technical and constructive development
- Representation in plans, sections, and details

THE WORK PRESENTED HAS BEEN INCLUDED IN THIS PORTFOLIO WITH AUTHORIZATION FROM THE RESPONSIBLE OFFICE AND ITS AUTHORS.

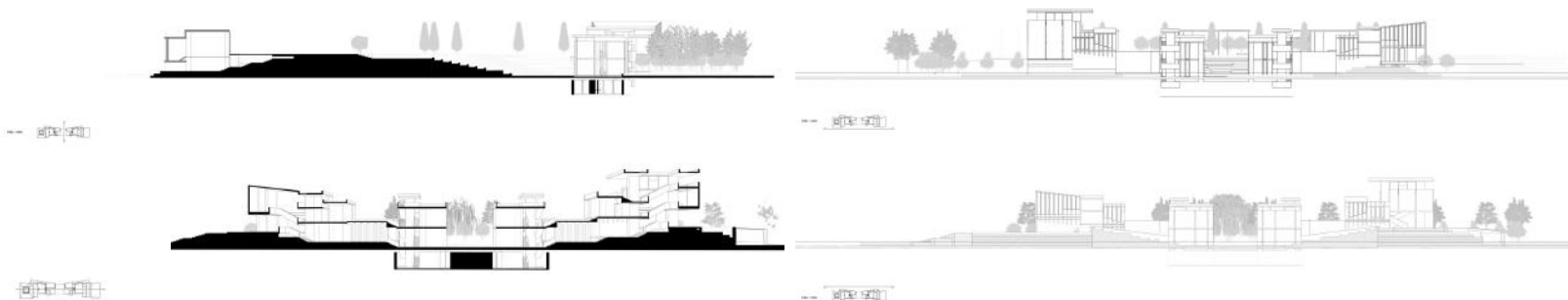


MODEL



ESC 1:200

ARCHITECTURAL DRAWINGS



ESC 1:200

# ACADEMIC PROJECTS

University Project

Habitable Interstice

Bogotá, Colombia

*Academic project developed through the integration of urban insertion, typological adaptation, and technical constructive development.*

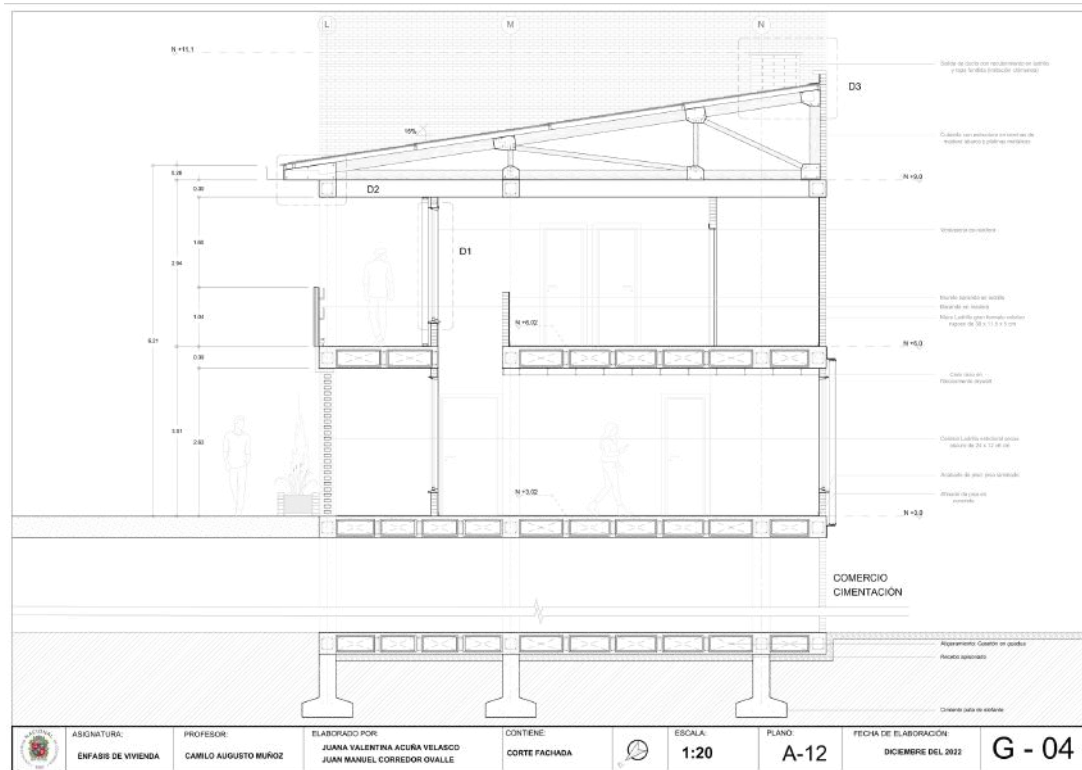
## Role

Project development through lot integration, housing design, and the preparation of construction details focused on technical viability.

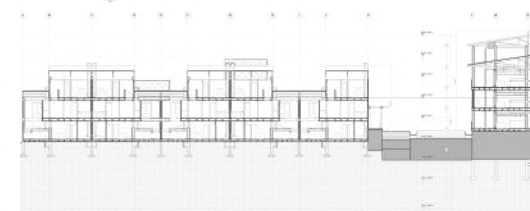
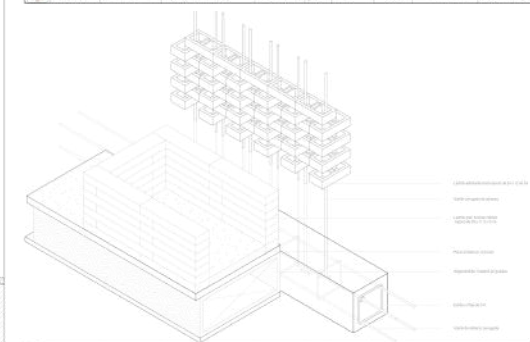
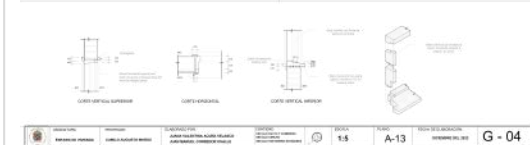
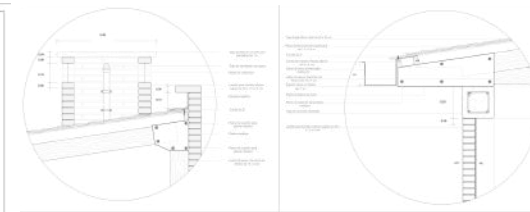
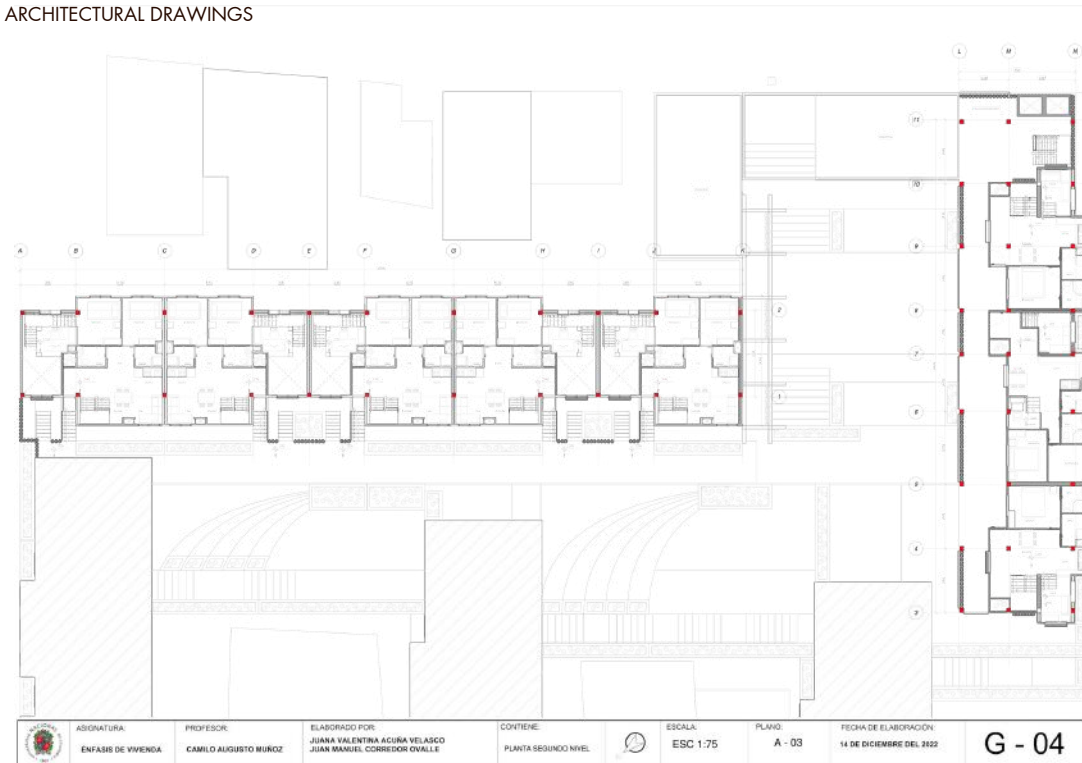
## Contributions

- Architectural design based on an irregular lot
- Development of housing units
- Construction details and façade sections

THE WORK PRESENTED HAS BEEN INCLUDED IN THIS PORTFOLIO WITH AUTHORIZATION FROM THE RESPONSIBLE OFFICE AND ITS AUTHORS.



ARCHITECTURAL DRAWINGS



ARCHITECTURAL DRAWINGS



MODEL

# ACADEMIC PROJECTS

University Project

Temple House

Sopó, Colombia

*Academic project developed through the relationship between symbolism, visible structure, and the spatial experience of light.*

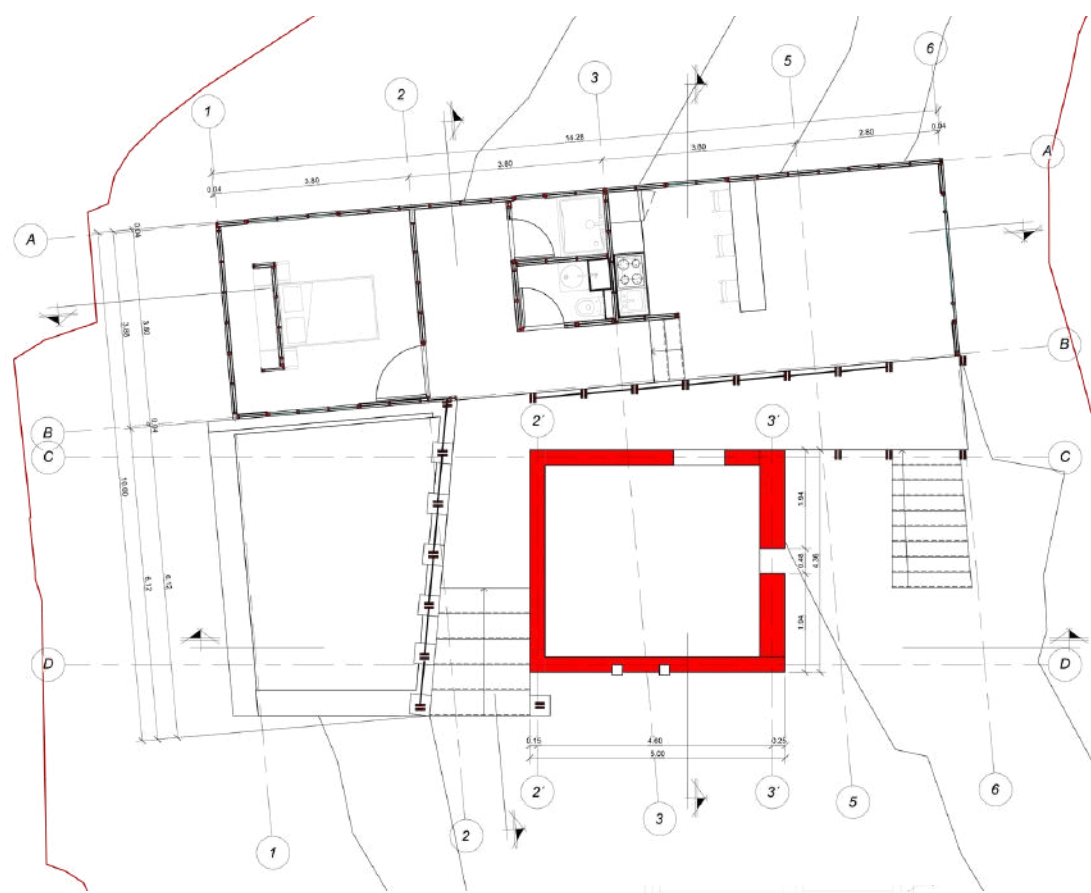
## Role

Project development through the integration of concept, structure, materiality, and natural light, seeking a spatial experience of spiritual character and constructive coherence.

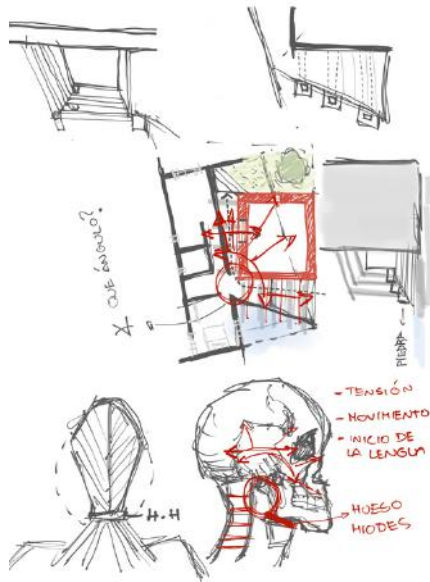
## Contributions

- Conceptual and spatial architectural design
- Structural and material development of the project
- Integration of light, symbolism, and context

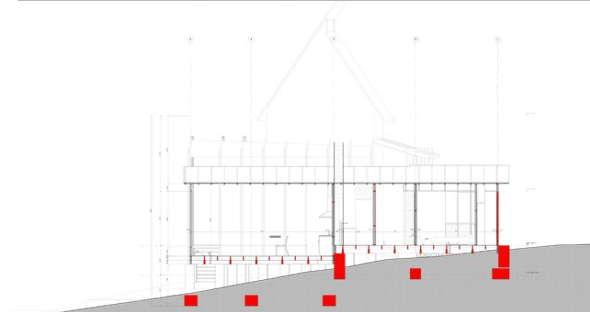
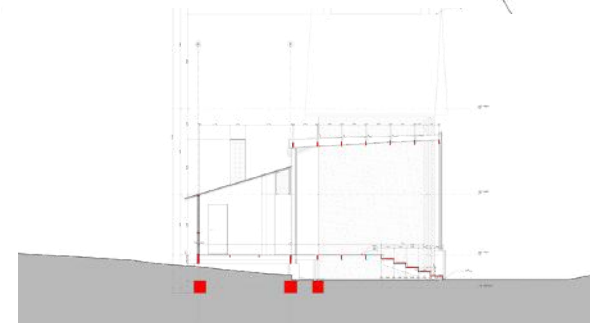
THE WORK PRESENTED HAS BEEN INCLUDED IN THIS PORTFOLIO WITH AUTHORIZATION FROM THE RESPONSIBLE OFFICE AND ITS AUTHORS.



ARCHITECTURAL DRAWINGS

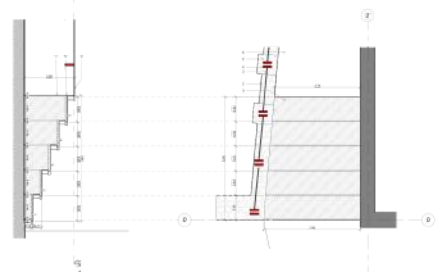


CONCEPT SKETCH



ARCHITECTURAL DRAWINGS

MODEL



ARCHITECTURAL DETAIL

# MASTER'S ACADEMIC PROJECTS

Master's Academic Project

Choachí Cabin

Choachí, Colombia

*Academic project developed through the relationship between material knowledge, compact design, and constructive resolution in wood.*

## Role

Development of the project through the study of wood species, the evaluation of their properties in laboratory testing, and the architectural and constructive design of a compact cabin, with emphasis on structure, joints, and habitability.

## Contributions

- Analysis and selection of wood species
- Architectural and structural design at a small scale
- Construction details and wood joints

THE WORK PRESENTED HAS BEEN INCLUDED IN THIS PORTFOLIO WITH AUTHORIZATION FROM THE RESPONSIBLE OFFICE AND ITS AUTHORS.



PORTFOLIO 2026  
ARCHITECT

JUAN MANUEL  
CORREDOR  
OVALLE