

Legacy

Building Hope
Together



ate odio. Sed
s elementum
at id aliquet
igna fermentum
t tellus cras
uis ut diam
diam phasellus
amet dictum

per sit amet
feugiat nibh
lit dui tris-
mauris nunc
da fames ac
h mauris.
At

Women 
Philanthropy
Past, Present, and Future



A Legacy in Motion

Something beautiful happens when women come together.

In the best of moments, the masks come off. There is honesty. There is laughter. There is real talk. And in that space, we begin to see one another more clearly. What we discover is that we have more in common than the things that separate us. We discover a sense of unity that has the power to rise above the divisiveness we see in the world around us.

Something even more powerful happens when women come together with purpose.

A purpose to give.

A purpose to serve.

A purpose to look beyond ourselves and join together to make a difference.

When women gather in this way, hope rises, even in places where it once felt out of reach.

This is what I have come to love about Women in Philanthropy at the Madison County Community Foundation. When I first stepped into this work, I was excited to connect with generous leaders and servants in our community.

What I discovered was something even greater. I discovered the power of a collective spirit of generosity. This is the foundation of hope.

More than two decades ago, a group of women recognized this and began building something that would last. The Women's Endowment Fund has grown into a force for impact in our community, touching lives in ways both seen and unseen.

These pages offer a glimpse of that impact and the possibility ahead.

As you turn these pages:

Celebrate what has been built.

Recognize what is happening now.

And dream about what we can do together through what comes next.

Let's continue building hope, together.

Tamara Dreger

Madison County

Community Foundation

Communications Manager





WOMEN IN
PHILANTHROPY

LEGACY

BUILDING HOPE TOGETHER





HOW IT BEGAN

Since 2005, Women in Philanthropy (WIP) has united women across Madison County who share a vision of giving back and building a stronger future for women and children. Over the years, the program has evolved, with the annual luncheon becoming a signature event that brings together hundreds of women in celebration of generosity and community impact.



Why We Gather. Why We Give.

*An introduction to the vision, impact, and future of
Women in Philanthropy*

The Reality

In 2025, only 2% of charitable giving in the United States was directed specifically toward women and girls.

Just 2%.

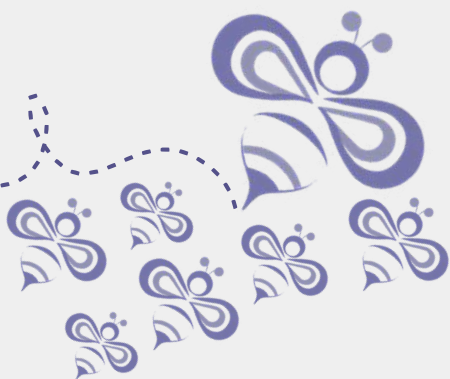
This is not because the need is small. In fact, we know the opposite is true. Investing in women and girls is one of the most effective strategies for creating lasting social change. When women are supported, children stay in school, families gain stability, communities strengthen, and new opportunities take root.

Even as women hold more wealth and leadership influence than ever before, philanthropic dollars are not reaching causes that directly support women and children.

At the same time, women are losing ground in key areas of representation and influence, from leadership roles to decision-making spaces that shape our future.

This is not a reflection of ability or potential. It is a reflection of systems that have yet to fully invest in women.

The Gap



Our Response

That is why Women in Philanthropy exists and why it is evolving. We are reimagining this work as a collective. Because the change we seek will not happen in isolation. It will take shared vision, shared investment, and shared action to move the needle.

The Power of the Hive

A single bee, on her own, produces only a tiny fraction of honey in her lifetime, almost too small to measure. But together, a hive produces abundance. What seems insignificant alone becomes transformative when combined.

This is the power of collective giving

When women come together to build something larger than themselves, they create not just immediate impact, but lasting infrastructure for change, something that continues to grow, support, and sustain for generations.

This is the legacy we are building. Together.



A Legacy in the Making

From Faithful Beginnings to Growing Impact

Built Over Time

Since the Women in Philanthropy endowment was established in 2005, women across Madison County have come together, year after year, to invest in something greater than themselves.

What began with individual gifts, many small and all meaningful, has grown into a collective force for good. Each contribution, each luncheon, each act of generosity has added to a story that continues to unfold.

This impact has never been about one moment.
It has been built steadily, faithfully, over time.

Growing the Impact

In recent years, Women in Philanthropy has expanded its reach, engaging more women, welcoming new voices, and increasing participation through the annual luncheon.

With the support of sponsors and a growing community of givers, grantmaking has increased, allowing for larger and more transformative investments in organizations serving women and children.

What was once a beginning is now building momentum.

**This is not just a story of what has been done.
It is a foundation for what comes next.**

Organizations Impacted Since 2008

Note: The Women in Philanthropy Endowment was established in 2005.

- 2008 Cape
- 2009 Dove Harbor
- 2010 Angel Food Ministries
- 2010 Exchange Club Resource Center
- 2010 Beauty for Ashes
- 2011 Madison County Education Coalition
- 2018 Ivy Tech Community College Anderson
- 2019 Willow Place
- 2019 Ivy Tech Community College Anderson
- 2021 Madison County Literacy Coalition
- 2021 Operation Love Ministries
- 2022 Anderson Education Foundation
- 2022 Anderson Art Museum
- 2022 Operation Love Ministries
- 2023 Muncie Mission Ministries
- 2023 Leadership Academy of Madison County
- 2023 Operation Love Ministries
- 2024 Heartland Community Action Program
- 2024 Outfitters
- 2024 Alternatives
- 2025 Christian Center
- 2025 Grace Horizons
- 2025 Habitat for Humanity
- 2026 Bloom Madison County
- 2026 Aspire Indiana Health
- 2026 Operation Love Ministries



As this list continues to grow, so does the opportunity before us. What has been built through years of generosity is now becoming something more intentional, more connected, and more enduring.

We are not just continuing the work.

We are preparing to strengthen it for the future.

**A Legacy is not something we leave behind.
It is something we build. Together.**

Looking Ahead

Impact Feature Story: The Well

For too many women and children in Madison County, crisis comes with impossible choices. This choice sometimes includes staying in unsafe situations or face life without shelter, stability, or support. In those moments, the absence of a safe place can shape the trajectory of an entire family. But because of you, that story is changing. At The Well, a ministry of the Christian Center, women and children are finding more than a roof over their heads. They are discovering safety, dignity, and a community that believes in their future.

At the 2025 Women in Philanthropy Luncheon, this project was selected as the top grant recipient, an investment made possible through the Madison County Community Foundation and the collective generosity of women dedicated to strengthening our community. This investment made critical improvements to the home, allowing it to become a place of refuge where women can focus on growth, restoration, and building a new path forward.

Since opening, The Well has already helped 11 families move into homes of their own, creating lasting change that extends far beyond their time in the program. Two mothers were even able to have DCS cases closed while living at The Well. These are powerful milestones that represent stability, trust, and restored family connection.

What makes The Well unique is not just the housing, it's the environment of transformation. Women are met with both compassion and accountability, often for the first time. They are supported as they rebuild confidence, develop life skills, and begin to believe in themselves again.

As one leader shared, the heart of the work is “loving women back to life.”



That transformation is felt immediately by children as well. When they arrive, there is a noticeable sense of relief. In a safe and nurturing environment, they begin to relax, form friendships, and experience the stability every child deserves. Families are no longer surviving. They are beginning to thrive.

One mother's story captures this impact so clearly. After working tirelessly to regain custody of her children while living in unstable conditions, she came to The Well feeling overwhelmed and uncertain. What she found was not judgment, but community. Surrounded by encouragement and support, she was eventually able to reunite with her children and move into a home of her own. She describes The Well as "a great blessing" in her life and her children's lives.

The need is significant. Each week, calls come in from women with children who have nowhere safe to go. Today, there is already a waiting list. And yet, The Well stands as a powerful reminder of what is possible when a community responds with compassion and action.

Your generosity is not only meeting urgent needs. It is breaking cycles, restoring families, and building a future filled with hope. Through The Well, your generosity is creating a place where hope has an address.



Impact that Lives On

The Legacy in Action

Across Madison County, Women in Philanthropy grants are doing more than meeting needs. They are changing trajectories. These stories reflect the power of collective giving to create stability, opportunity, and hope for women and children today and for generations to come.

One Scholarship. Two Generations Changed.

A 30-year-old single mother of two was working 35 hours a week while pursuing a healthcare degree, doing everything she could to keep moving forward. A \$2,500 Women in Philanthropy scholarship helped cover her tuition gap, allowing her to reduce work hours and complete her clinical requirements.

Within two years, she secured employment with benefits, increasing her income by \$15,000–\$20,000 annually. Her progress didn't just change her future. It created new stability and opportunity for her children as well.



By the Numbers

These numbers represent just a few of the lives impacted through Women in Philanthropy grants.

2,102
children served in 2025

13 families
in Habitat homes (11
women-led households)

250+
women and children
housed

200%
growth in academic
completions

60+
children served
through Partner Closet
expansion

When Crisis Strikes, Support is Immediate

After a house fire displaced a family, a mother came to the newly opened Partner Closet unsure how she would provide for her children. Within minutes, she was able to leave with clothing for each member of her household—allowing her to focus on the next steps toward stability.

“Now I can focus on what comes next.”



Safety, Stability, and a Path Forward

A mother and her children, navigating the trauma of abuse, were connected to protection, housing, and coordinated support services. With safety in place, the family could begin the process of healing and rebuilding.



From House to Home

A single mother and her two children walked into their newly built home for the first time. As her young child ran across the floor in excitement, it was clear: this was more than housing. It was stability, dignity, and a foundation for generational change.



A Moment That Changes Momentum

A young single mother, balancing school and parenting, recently received a perfect score on a major Anatomy exam. For her, that moment represented more than academic success. It marked renewed confidence and the belief that her goals are within reach.



This is what happens when women give together

Legacy in Action

How Impact Takes Shape

Education & Opportunity

Women in Philanthropy funding helps remove barriers to education, supporting scholarships, certifications, and transformative experiences like conferences, competitions, and travel opportunities.

For many students, these are once-in-a-lifetime moments that expand what they believe is possible.



Stability & Basic Needs

From food and clothing to emergency support, these grants help families meet immediate needs, freeing up resources to focus on housing, employment, and long-term stability.



Building Long-Term Change

Programs focused on financial stability, education, and housing create ripple effects that extend far beyond one individual, impacting children, families, and future generations.



Supporting the Work Behind the Work

Not all impact is visible. Funding that supports administrative functions—like payroll, accounting, and operations—ensures organizations can stay focused on what matters most: caring for people. Because strong infrastructure sustains strong impact.



What Happens When We Give Together

A close-up photograph of a woman with dark hair, wearing a necklace and earrings, hugging a young child with curly hair. The image is overlaid with a semi-transparent text box.

No single story defines this impact. It is the collective—many lives, many needs, many moments of transformation.

Together, these investments create something lasting: children growing up in stable homes, women advancing in education and careers, and families finding hope in moments of uncertainty.

**This is the power of Women in Philanthropy.
This is the legacy we are building, together.**

Woman of Impact

This award recognizes a woman who goes above and beyond to empower women and advocate for children throughout Madison County. The award is our way of honoring a woman for her significant contributions to the women and children of Madison County through their commitment, action, and advocacy.

**Ruthie
Smith**

**Denise
Valdez**

**Kimberly
Townsend**



2023



2024



2025

Gloria Gaither

2026 Woman of Impact

For more than fifty years, Gloria Gaither has helped shape the world of gospel music, literature, and faith-based storytelling. Alongside her husband, Bill Gaither, she has written more than 700 songs, produced award-winning recordings, and helped create musicals that have been shared with audiences around the world. In recognition of their lasting influence, Bill and Gloria were named ASCAP's Christian Songwriters of the Century in 2000 and have received numerous Grammy and Dove Awards, as well as induction into the Gospel Music Hall of Fame.

Gloria is also an accomplished author, speaker, and scholar, having written more than 40 books and contributed to academic publications. She has received honorary doctorates from eight universities and continues to encourage the next generation of songwriters and creatives through her advocacy for songwriting programs at Christian universities.

Closer to home, Gloria has been a faithful supporter of Women in Philanthropy since its beginning, helping grow the endowment that continues to fund programs serving women and children throughout Madison County.

Through her creativity, generosity, and lifelong dedication to encouraging others, Gloria Gaither's influence has reached far beyond the stage. Women in Philanthropy is proud to celebrate her as the 2026 Woman of Impact.



**At the heart of every
hive is a queen
whose role is not
power, but purpose,
sustaining the life
and future of the
colony**



REVITALIZING WOMEN IN PHILANTHROPY

Reimagine Impact and Generosity, Together

Since 2005, Women in Philanthropy (WIP) has united women across Madison County who share a vision of giving back and building a stronger future for women and children. Over the years, the program has evolved, with the annual luncheon becoming a signature event that brings together hundreds of women in celebration of generosity and community impact.

While the luncheon continues to be a beloved tradition, the Women in Philanthropy Endowment has not grown at the same pace. Currently producing about \$7,000 annually for grants, the fund has the potential to do much more.

A RENEWED VISION

Women in Philanthropy will continue to celebrate the power of women's giving while expanding opportunities for long-term impact through the creation of The Legacy Collective, a reimagined structure that blends joyful community connection with enduring philanthropic growth.

The Legacy Collective

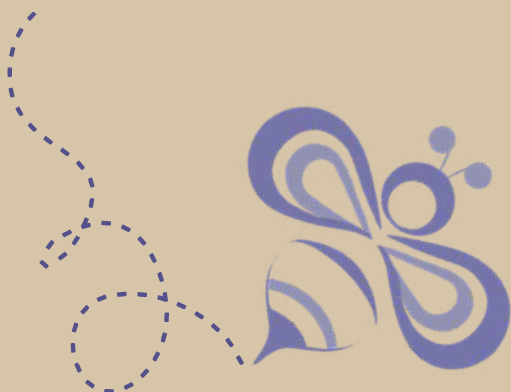
The Legacy Collective honors women who choose to invest more deeply in the future of women and children in Madison County. It replaces the former "Century Club" with a name that reflects both movement and meaning—embodying the joyful spirit of giving and community.



The Legacy Collective unites women in Madison County whose generosity today builds a legacy of opportunity for tomorrow.

JOIN THE LEGACY COLLECTIVE

Join the Legacy Collective and have your gift tripled through support from Lilly Endowment Inc. as part of Madison Forever: Multiply Madison.



2:1

MATCH

GOAL

OUR GOAL IS TO GROW THE WOMEN IN PHILANTHROPY ENDOWMENT TO \$1,000,000 THIS GROWTH WILL INCREASE ANNUAL GRANTMAKING CAPACITY TO \$40,000

Contact Libby Manning, manningl@madisonccf.org or Tamara Dreger, tdreger@madisonccf.org to donate or for more information.



MADISON COUNTY
COMMUNITY FOUNDATION

THE LEGACY COLLECTIVE

A GOAL FOR IMPACT THAT LASTS FOREVER

The Legacy Collective aims to grow the Women in Philanthropy endowment to \$1,000,000.

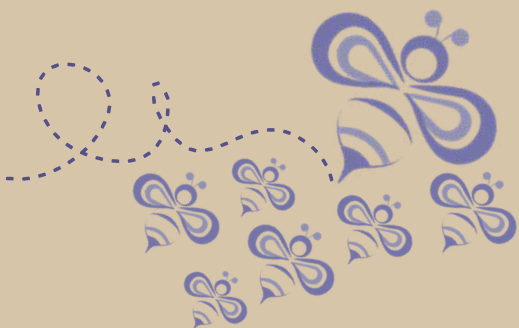
This growth will increase annual grantmaking capacity to \$40,000.

This is a powerful legacy benchmark, ensuring that the generosity of today's women continues to shape Madison County for generations.

GIVE NOW



<https://tinyurl.com/wiplegacycollective>



GOAL: \$242,780

TO RAISE THE WOMEN'S ENDOWMENT TO \$1,000,000

When this campaign began, we needed \$698,678 to reach our \$1 million goal. Through a 2:1 match, that meant raising \$232,892 in new gifts. Thanks to early generosity, we are already well on our way.

Join the Legacy Collective and help us complete the full \$1 million vision and significantly expand the impact of Women in Philanthropy.

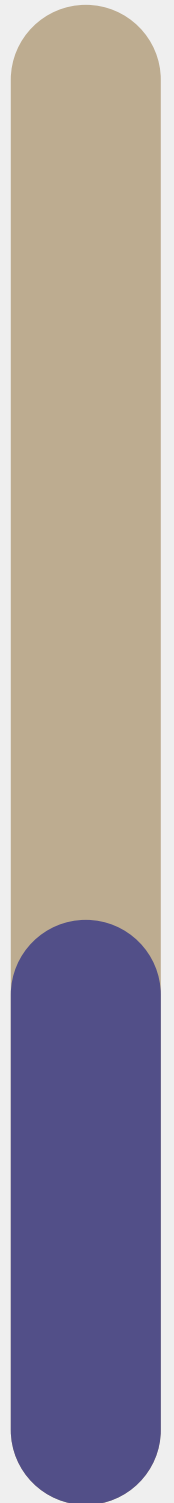
\$149,000 Remaining

Total:
\$93,600
\$81,400
Raised
\$12,200
Pledged,

every dollar = triple impact

give \$1,
we add \$2

39%



Be Part of the Legacy

An invitation to give, belong, and build together

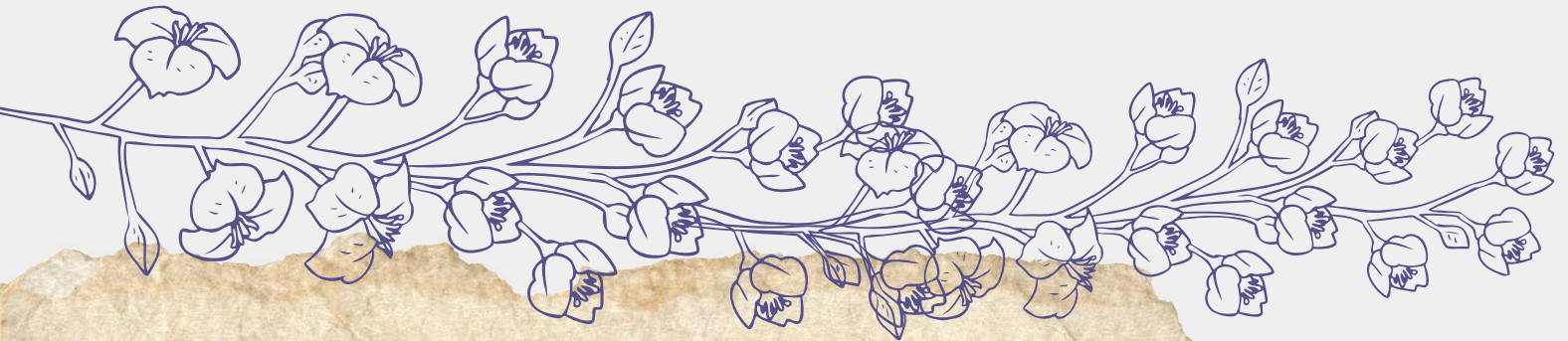


The Legacy Collective is more than a giving opportunity. It is a community of women choosing to invest together in lasting change.

What has been built through years of generosity is now growing into something more intentional, more connected, and more enduring. And there is a place for you in it.

YOU BELONG HERE

Every gift matters. Every voice matters. Every woman who chooses to give becomes part of something larger than herself, a shared investment in the future of women and children in Madison County.



Ways to Engage

Become a Legacy Leader

Gifts of \$1,000 or more represent a deeper investment in lasting change. Legacy Leaders are invited into a series of shared experiences throughout the year, moments of connection, reflection, and celebration, including a special honey tasting this fall.

Join the Legacy Collective

Gifts of \$100 or more annually welcome you into the Collective—a community rooted in connection, generosity, and shared purpose.

**A legacy
is not
built
alone.
It is
created
together.**

Growing Together

Through early commitments in the silent phase of this campaign, many women have already stepped forward as Legacy Leaders, helping build momentum toward our shared goal. As we publicly launch this next chapter, we invite others to join, to give, to belong, and to help shape what comes next.

2026 Legacy Leaders

Jim Ault in memory of Marilyn Ault
Amanda Ayers
Fay Barber-Dansby
Dr. Matilda Barber
Joy Beghtel
Treva Bostic
Gina Brisco
Carolyn Caldwell
Erin Coffman
Meredith Contos
Craig Dunkin in memory of Marsha Dunkin
Sandy Freeman

Gloria Gaither
Julie Hettinga
Anna Marie Hinton
Nancy Likens
Koty McDole
Maureen Lambert
Sandy McCurdy
Stephanie Moran
Jackie Nicholls
Laine Ricker-Patterson
Cheryl Shank
Bekah Snyder Logan
in honor of Bobbette Snyder, Our Queen Bee
Kathy VanOsdol

2026 Legacy Collective

Deanne Beard
Cynthia Beisser
Paula Bivens
Shonda Bowers
Tracy Brandon
Sonia Caldwell
Mary Carter
Charlotte Cotton
Amy Davis
Tami Davis
Beth Erskine
Stephanie Evelo
Maria French
Mary Gamache
Alacia Goettman
Joann Hadley
Deborah Hammell
Michele Hockwalt
Pam Jones
Beverly Joyce
Keri Kardatzke
Stephanie Knaus
Johna Lee
in honor of Mary Jo Lee
Lindsey Madinger
Rachael McCracken
Stacey McGuire
Sharon McNabney
Stephanie Metz
Veda May-Morris
Michele Mullins
Melissa Musselman
Pauline Neal
Sue Patton
Jessica Petersen
Briana Price
Donna Roberts
Sherry Sidwell
Marissa Skaggs
Tina Skeel
in memory of Mildred May

Ruthie Smith
Sophie's Bagels
Sharon Stafford
Josephine Stewart
Beth Tharp
Jennifer Timmons
Denise Valdez
Stephanie Washington
Shelby Wisehart
Carma Wood

In memory of Janet
Casey and Virginia
Meckel

Your name belongs here.

Join a growing community of women who are choosing to invest together in lasting impact. Your participation helps strengthen the future of Women in Philanthropy and expand opportunities for women and children across our community.

The Heart of the Hive

The Madison County Community Foundation (MCCF) exists to invest in lasting positive change to elevate and strengthen Madison County. Guided by our vision for Madison County to be a community where every person has the opportunity to thrive, MCCF attracts charitable gifts, stewards permanent endowments, invests in impactful grantmaking, and convenes partners around shared opportunities. We are committed to the core values of Integrity, Community, Impact, Inclusion, and Legacy, and we pursue four strategic goals: growing our portfolio of funds, investing in grantmaking, convening our community, and strengthening our organizational capacity.

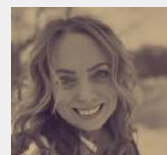
Serving Madison County since 1991, MCCF ensures that generosity continues to transform our community—for good, forever.

BOARD MEMBERS

Koty McDole, Chair
Brian Donahue, Executive Member At large
Jill McKinney, Vice-Chair and Secretary
Gina Brisco, Treasurer
Terri Austin
Lolly Bargerstock
Joy Beghtel
Eric Davis
Suahil Housholder
Stefanie Leiter
L.J. Mechem
Kim Townsend
Terry Truitt



STAFF



Ben Davis, President
Kari Sisk, Vice President of Programs
Sue Patton, Director of Finance
Tamara Dreger, Communications Manager
Rev. Libby Davis Manning, Development Advisor

Special Thanks

The 2026 Vision Collective

The Women in Philanthropy Vision Collective guides the vision, shapes the annual luncheon, and serves as ambassadors for Women in Philanthropy and The Legacy Collective.

Tamara Dreger (MCCF)
Libby Manning (MCCF),
Jenn Eisinger (MCCF)
Trevia Bostic
Lindsey Madinger
Koty McDole
Stacey McGuire
Stephanie Moran
Cheryl Shank
Sharon Stafford
Kim Townsend



A Legacy of Generosity

Together, We Have Built This

We are deeply grateful for the women whose generosity has shaped the Women in Philanthropy endowment from 2005-April 2026. Each name represents a commitment to building lasting impact and expanding opportunity for women and children in Madison County.

Akers, Dr. Marilyn L.
Alder, Barbara J
Alexandria Memorial Services Inc.
Alternatives Incorporated of Madison County
Anderson University
Anderson, Mrs. Nancy L.
Anderson, Ms. Tina R.
Anderson/Madison County Black Chamber of Commerce, Inc
Anthem
Apple, Mr. Donald and Mrs. Rose
Applebaum, Morgan Michelle
Ascension St. Vincent Anderson Foundation
Ault, Mr. James F.
Austin, Mr. Michael and Mrs. Terri J.
Autrey, Mr. Rod and Mrs. Ava L.
Bachman, Betsey
Baker, Ms. Rosemary
Baker, Ms. Tina M. and Mr. Stephen P.
Barber, Mr. Jeffrey W. and Mrs. Susan E.
Barber, Mrs. Matilda J.
Barton Steele, Ms. Lindsey
Barton, Dr. Linda
Bauer, Ms. Ann Marie
Beard, Mrs. Deanne and Mr. Ronald K.
Beghtel, Ms. Joy
Bitner, Ms. Michelle
Bivens, Paula
Boards, Ms. Sherrie
Bottomley, Mr. Stephen A. and Mrs. Lori
Boudreaux, Ms. Caroline
Bourke, Mr. Stephen R. and Mrs. Nancy S.
Bowen, Mrs. Jeanne and Dr. William J.
Braddock, Mrs. Martha W.
Briles, Mrs. Beverly and Mr. Richard R.
Brinkman, Ms. Joni
Brisco, Mr. Curt A. and Mrs. Gina L.
Brown, Mr. Jerry Lee and Mrs. Phyllis
Brown-Butz-Diedring Funeral Service & Crematory
Bryan, Janice
Burrows, Mr. Frank and Mrs. Janet
Burt, Mr. Howard L. and Mrs. Diana K.
Burt-Murray, Mrs. Angela
Caesars Enterprise Services LLC
Caldwell, Dr. Carl and Mrs. Carolyn
Caldwell, Ms. Sonia
Campbell, Mrs. Ida H.
Camperelli, Elizabeth
Campfield, Mrs. Janice L.
Canaday, Mrs. Anita and Mr. Tony
Carey, Mrs. Marlene R. and Mr. Rick
Carpenter C.P.A., Ms. Nancy K.
Carter Shuttle Services LLC
CASA (Court Appointed Special Advocate)
Cassidy, Mr. Thomas J. and Mrs. Angela
CECA Enterprises LLC
Charles Schwab & Co.
Church, Mr. Meredith M. and Mrs. Betty
Clark, Ms. Kay J.
Clawson, Ms. Rebekah
CNHI LLC
Cochran, Mrs. Marci L. and Mr. Rufus C.
Coletti, Mrs. Pam and Mr. Ron
Collier, Mrs. Laura G.
Community Health Network
Community Hospital Foundation
Community Hospital of Anderson
Convergence Home care Services
Cox, Mrs. Susan E.
Crouse, Cindy
Crum, Mrs. Betty A. and Mr. Thomas
Cultured Urban Winery
Dansby, Ms. Fay
Davis, Ms. Kasey
Davis, Ms. Sara
Davisson, Mr. Daniel S. and Mrs. Jane
Dawson, Ms. Linda
Day, Mr. Ralph and Mrs. Pam
DeLey, Ms. Lisa F.

Detour Salon and Style
DeVoe, Sally
Dewar, Mrs. Millie
Dickmann, Mr. Charles H. and Mrs. Hazel
Dietz, Ms. Amber
Donovan, Ms. Jama and Mr. Scott
Dotson, Mrs. Sharon
Dreger, Tamara
Dunkin, Mr. Craig and Mrs. Marsha
Eddy, Mrs. Sonya
Edward Jones
Edwards, Dr. James L. and Mrs. Deanna
Epply, Mrs. Elizabeth and Mr. Tom
Erskine, Mr. Carl D. and Mrs. Betty
Erskine, Mr. Gary W. and Mrs. Beth
Estep Burkey Simmons, LLC
Ewald, Mr. Erich and Mrs. Mary Lee
Excel Academy
Faris, Mr. Joseph B. and Mrs. Jean
Fenwick, Mrs. Jessica R. and Mr. Jason C.
Finger, Mr. Mark J. and Mrs. Susan
Foggs, Dr. Joyce D. and Dr. Edward L.
Frazier, Mrs. Rosemary and Mr. Thomas L.
Gaither Charitable Foundation
Gaither, Mrs. Gloria and Mr. Bill
Gardner, Mr. Harold and Mrs. Maryann
Gardner, Mrs. Maryann
George R. and Nancy C. Likens Fund
Gephardt M.D., Dr. David C.
Girinakis, Ms. Rena
Goings, Rev. Donna
Goins, Ms. Cathy
Gooding Brown & Company, Inc.
Graham, Mrs. Nancy and Mr. Phil
Graham, Ms. Dana and Mr. Jeff
Graves, Mrs. Mary E. and Mr. George
Guion, Mrs. Danielle R.
Gulley, Quelyn
Haas, Ms. Marilyn R.
Hadley, Mrs. Joanne and Mr. John
Hammel, Mrs. Deborah and Mr. Philip
Happe, Mrs. Keri S.
Hardacre, Mrs. Ann
Hardacre, Mrs. Brenda K.
Hardy, Ms. Marly
Harrah's Hoosier Park
Harris Family Dentistry
Hart, Mrs. Pamela and Mr. Ronald E.
Heart of Indiana United Way
Heartland Community Action Program

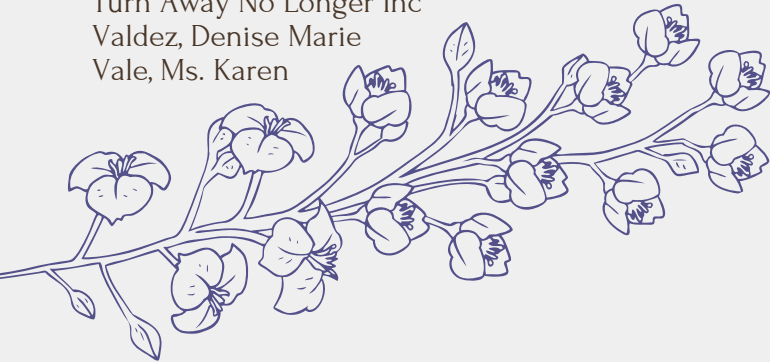
Henn, Ms. Adrienne
Henry, Matt
Herald Bulletin
Hettinga, Mrs. Julie L. and Mr. Kurt A.
Heuer, Ms. Kelli S.
High, Ms. Lynn
Hill, Dr. Jennifer
Hinton, Anna Marie
Hobbs, Mrs. Patti and Mr. William B.
Hockema, Ms. Pam A.
Hockwalt, Dawn Michele
Ihnat, Mrs. Tamra L.
Imel, Mrs. Heather and Mr. Scott J.
Independent FCU
Ivy Tech Community College-Anderson
Ivy Tech Foundation-Anderson
Ivy Tech Foundation-Indianapolis
Jack, Rev. Dr. Anita
JAM Printing
Jamerson, Mr. Paddy and Mrs. Mary
Jay and Nancy Ricker Charitable Fund
Jimmy L. McDole Attorney at Law
Johnson, Mrs. Brooke M. and Mr. Harold R.
Johnson, Mrs. Laurale
Jones, Mrs. Pam H. and Mr. Robert C.
Jones, Mrs. Pam J. and Mr. Chris A.
Jones, Ms. Tressena
Joseph R. Kilmer
Joyce, Beverly
Kavich, Lorri
Kaye, Ms. Jan A.
Keesling, Lindsey
Kelly-Rigney, Ms. Marisa
Ketring, Ms. Kelly
Kilmer, Mr. Joseph R. and Mrs. Beverly
Kimball, Mrs. Sarah and Mr. Jerry L.
King, Dr. Charles R. and Mrs. Pamela
Krebs, Mrs. Sylvia
Kuhn, Mrs. Patricia B. and Mr. Dennis
Kurtz, Ms. Connie
Lanane, Mrs. Cindy and Mr. Timothy
Landers, Rachel Lee
Lavelle J.R., Mr. Philip and Mrs. Chara D.
Lavelle Slabe, Michelle
Leddy, Kelly
Lee, Dr. G. Timothy and Mrs. Jeanne
Lee, Mrs. Johna Y. and Mr. Michael S.
Lee, Mrs. Mary Jo and Mr. Gary
Leslie, Ms. Sandra L.
Likens, Mr. George R. and Mrs. Nancy C.

Likens, Mr. Herbert G. and Mrs. Darlene
Likens, Ms. Julie
Lincoln Investment Planning, LLC
Lookworthy
Loose, Mr. Robert D. and Mrs. Linda A.
Loose, Mr. Robert E. and Mrs. Jane M.
Lovins, Patty
Lowe, Mrs. Mikella A. and Mr. Stephen D.
Lowe, Ms. Michelle
Loyd, Mr. Randy E. and Mrs. Joy
Madinger, Mr. Steve and Mrs. Donna
Madinger, Mrs. Lindsey and Mr. Derek
Madison County Community Foundation
Madison County Visitors Bureau
Madison Park Church of God
Manning, Rev. Libby D. and Rev. Matthew
Marshall Law LLC
Maynard, Mrs. Margaret A. and Mr. Mark D.
McCurdy, Dr. Dwight B. and Mrs Sandra L.
McDole Jr, Jimmy
McDole, Koty
McKinney, Jill
McLaughlin, Dr. Carey B. and Mrs. Karen
McNabney, Ronald and Sharon
McTague, Ms. Karen
Meckel, Marsha S
Medler, Ms. Jenn and Mr. Jason P.
Meiser, Mrs. Ariana
Meldon HVAC
Meyer, Ms. Kathi
Mike Pence Committee
Mikulski, Mandee
Miller, Darlene
Miller, Ms. Holly G. and Mr. Phillip G.
Miller, Ms. Jan
Millikan, James and Connie
Minority Health Coalition of Madison County
Minton, Ms. Sherry
Moneyhun, Mrs. Marilyn
Moran, Dr. Stephanie M. and Mr. Michael
Morrison, Ms. Virginia
Mudd, Ms. Jeanne
Murr, Mrs. Brenda and Mr. Tom
Myers Auto World
Nave, Mrs. Hazel
Nicholson, Mrs. Helen
Nicholson, Ms. Rita M.
Odenwelder, Ms. Tracey Danner
Odom, Melissa Malone
O'Malia, Ms. Jill A.
Orahood, Mr. James A. and Mrs. Rene
Over The Teacups Club
Owens, Ms. Connie
Owens, Ms. Steffanie L.
Pancof, Mrs. Anne and Mr. George

Parsons, Mrs. Ann Marie
Patterson, Laine
Patton, Sue
Pensec, Mr. Robert J. and Mrs. Susan P.
Perny, Mrs. Jana and Mr. Allen
Phillips, Ms. Kristin
Plummer, Ms. Fran
Price, Mrs. Briana
Primrose Retirement Communities
Rasper, Ms. Deborah
Ray, Dr. Joanne T.
Redwood Automotive
Reichart, Mrs. Selita
Renfro, Mrs. Sharon and Mr. Victor A.
Renz, Ms. Holly and Mr. David
Research Club
Rhoads, Ms. Tracey
Ricker Oil
Ricker, Mr. Jay and Mrs. Nancy L.
Ricker-Patterson, Laine
Riggs, Miss. Barbara A.
Roberts, Ms. Ann and Mr. Dallas Ray
Robinson, Mr. Jack and Mrs. Merrellen
Rock, Mrs. Mary Jo
Rockhill, Mrs. Lois J. and Mr. Ervin E.
Ross, Ms. Nicole
Rowley, Mr. Alan and Mrs. Lynn
Rowley, Mrs. Lynn and Mr. Alan
Ruff, Ms. Jane
Rusk, Ms. Jill E.
Sallee, Ms. Darla
Samerian Foundation Inc.
Sargent, Mrs. Jennifer
Schieve, Mrs. Sydney and Mr. John A.
Schwab Charitable
Scott, Mrs. Carolyn and Mr. Gregory
Scott, Ms. Vonnie and Mr. James M.
Shackelford, Mrs. Lindsey and Mr. Lawrence
Shafer, Ms. Leigh Ann
Shank, Cheryl Lynn
Shell, Mrs. Marjorie and Mr. Duane E.
Shoot, Mr. Roger and Mrs. Pam
Short, Mr. Stephen and Mrs. Candy
Short, Mrs. Pat
Sidwell, Sherry
Sims, Judge Angela and Mr. M. Charles
Skaggs, Mrs. Marissa and Mr. Andrew M.
Skeel, Tina
Skeen, Ms. Michelle
Skjodt, Mrs. Cindy Simon
Smith, Mr. Terrance A. and Mrs. Joy
Smith, Mrs. Cynthia and Mr. J. Michael
Smith, Ms. Ruth A.
Snyder Logan, Ms. Bekah
Snyder, Mr. Thomas J. and Mrs. Bobbette
Spaulding, Mr. Rob

Spencer, Ms. Patsy W. and Mr. Frederick G.
Sromek, Ms. Kathleen L.
St. Vincent Anderson Regional Hospital Foundation, Inc
St. Vincent Mercy Hosp. Fdn.
St. Vincent Mercy Hospital
Stafford, Sharon Dawn
Staley, Mr. Charles and Dr. Lynn
Standlee, Ms. Sara
Stapleton, Ms. Deborah M.
Star Financial Bank
Starkey, Ms. Mary
Starks, Mrs. Gena and Mr. Scott
Stephenson, Mrs. Margaret
Stewart, Mr. Chester L. and Mrs. Joyce
Strietelmeier, Mr. James D. and Mrs. Jackie
Surber, Mrs. Janet and Mr. Charles
Sylvester, Ms. Barbara
Taylor, Ms. Leslie R.
Teeple, Mrs. Linda and Dr. Rex
Terrell, Ashaki Lynn
Thanas, Mrs. Edwina and Mr. Tony
Tharp, Ms. Beth and Mr. David
The Toast Cafe
Thompson, Dr. Denise and Mr. Daniel
Thompson, Mrs. Marilyn
TIAA
Tierney, Dr. William J. and Mrs. Gwendolyn M.
Tipton County Foundation, Inc.
Townsend, Kimberly
Turn Away No Longer Inc
Valdez, Denise Marie
Vale, Ms. Karen

Vance, Merrilyn
Vargas, Ms. Heather
Vaughan, Mrs. Nancy
Verhulst, Mrs. Linda S.
Volk, Mr. Donald and Mrs. Sandy L.
W. R. Dunkin & Son, Inc.
Wallace, Ms. Tara
Warner, Mr. Steven W. and Mrs. Lynn
Washington, Mrs. Jo Dean and Mr. Perry J.
Weatherly, Ms. Shirley
Weiandt DMD, Molly R. and Mr. Russell J.
West, Ms. Linda R.
Westerfield-Gunter, Ms. Carlene
White, Rev. Sharon
Whitesel, Mrs. Carol and Mr. Reed D.
Whitworth, Ms. Georgeann H.
Wilken, Herb and Margie
Wilkinson, Ms. Taylor
Williams, Kim
Williams, Mrs. Perla and Mr. Charles J.
Williams, Ms. Deca
Willow Place
Wills, Ms. Megan
Wishell, Mrs. Kim
Woodall Jr., Mr. Japheus P. and Mrs. Jessica
Woschitz, Mr. Robert and Mrs. Jan
Wykoff-Eichelman, Ms. Kathryn
Yates, Mrs. Ann and Mr. James
Zafar, Ms. Jamila
Zapolski, Ms. Stacey
Zinszer, Mrs. Judy and Mr. Kendall B.



Building Hope Together

Give to the Women's Endowment Fund

Join the Legacy Collective



<https://tinyurl.com/wplegacycollective>



Together

Every story in these pages began with someone choosing to give.



Give to the
Women's Endowment Fund

Join the Legacy Collective

<https://tinyurl.com/wiplegacycollective>



MADISON COUNTY
COMMUNITY FOUNDATION

Investing in lasting
change to strengthen and
elevate Madison County

Women
in
Philanthropy

Building Hope
Together ²⁸