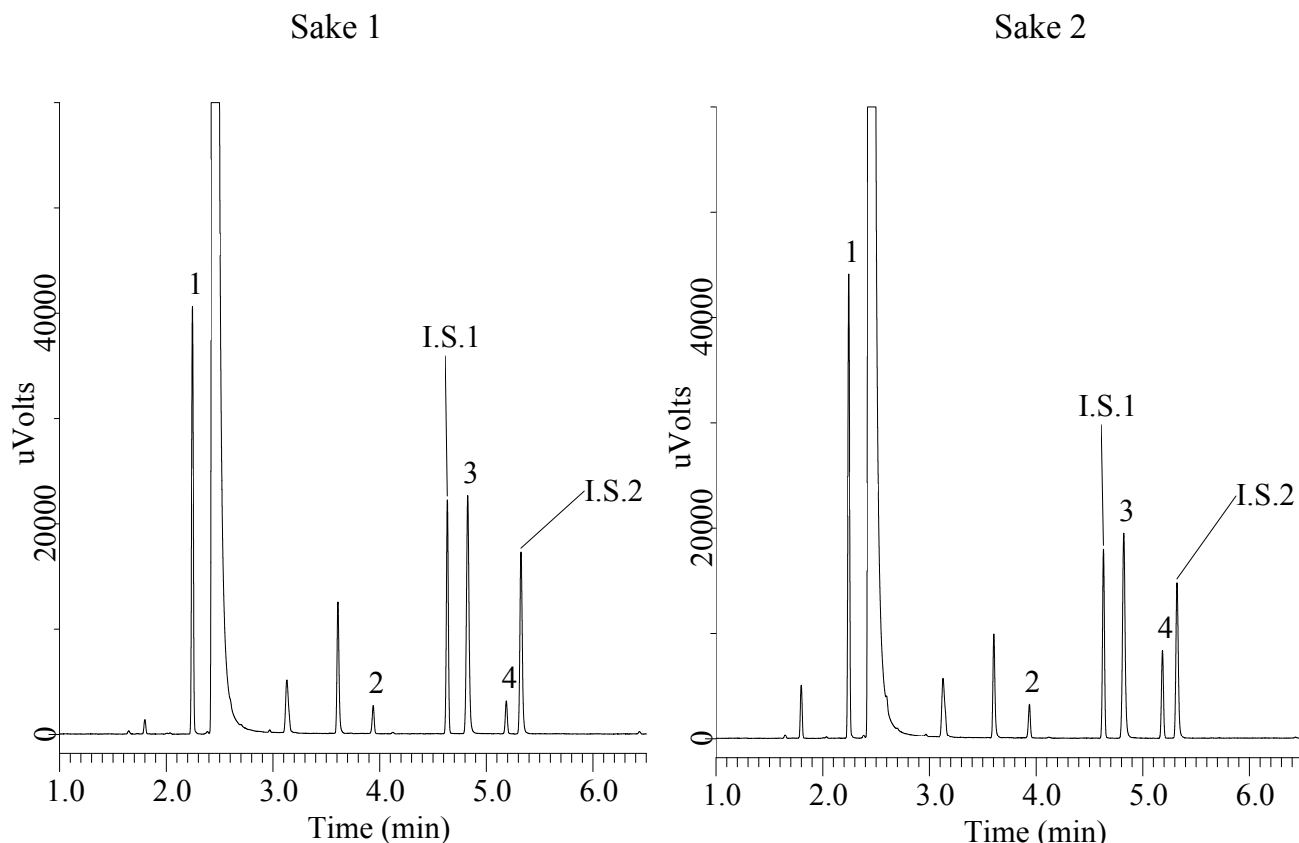


InertSearch™ for GC

InertCap® Applications

Analysis of Aromatic Compounds in Sake by the Analysis Method of the National Tax Agency

Data No. GA272-0591



Conditions

System : GC4000Plus-FID
Headspace Gas(HT3)

Column : InertCap Pure-WAX
0.32 mm I.D. x 30 m df = 0.25 µm

Col. Cat. No. : 1010-68242

Col. Temp. : 40 °C - 10 °C/min - 240 °C

Carrier Gas : He 2mL/min

Injection : Split 1:50
250 °C

Injection Vol. : Headspace Gas 1 mL

Detection : FID Auto Range
250 °C

Sample : Sake 0.9 mL + I.S. 0.1mL
Sample heating Temp. 50 °C
Sample heating time 30 min

Headspace Vial : 22 mL

Analyte

1. Ethyl acetate

2. Isopentyl acetate
(Isoamyl acetate)

I.S.1. Methyl hexanoate 10 ppm
(Methyl caproate)

3. 3-Methyl-1-butanol
(Isoamyl alcohol)

4. Ethyl hexanoate
(Ethyl caproate)

I.S.2. 1-Pentanol 100ppm
(*n*-Amyl alcohol)