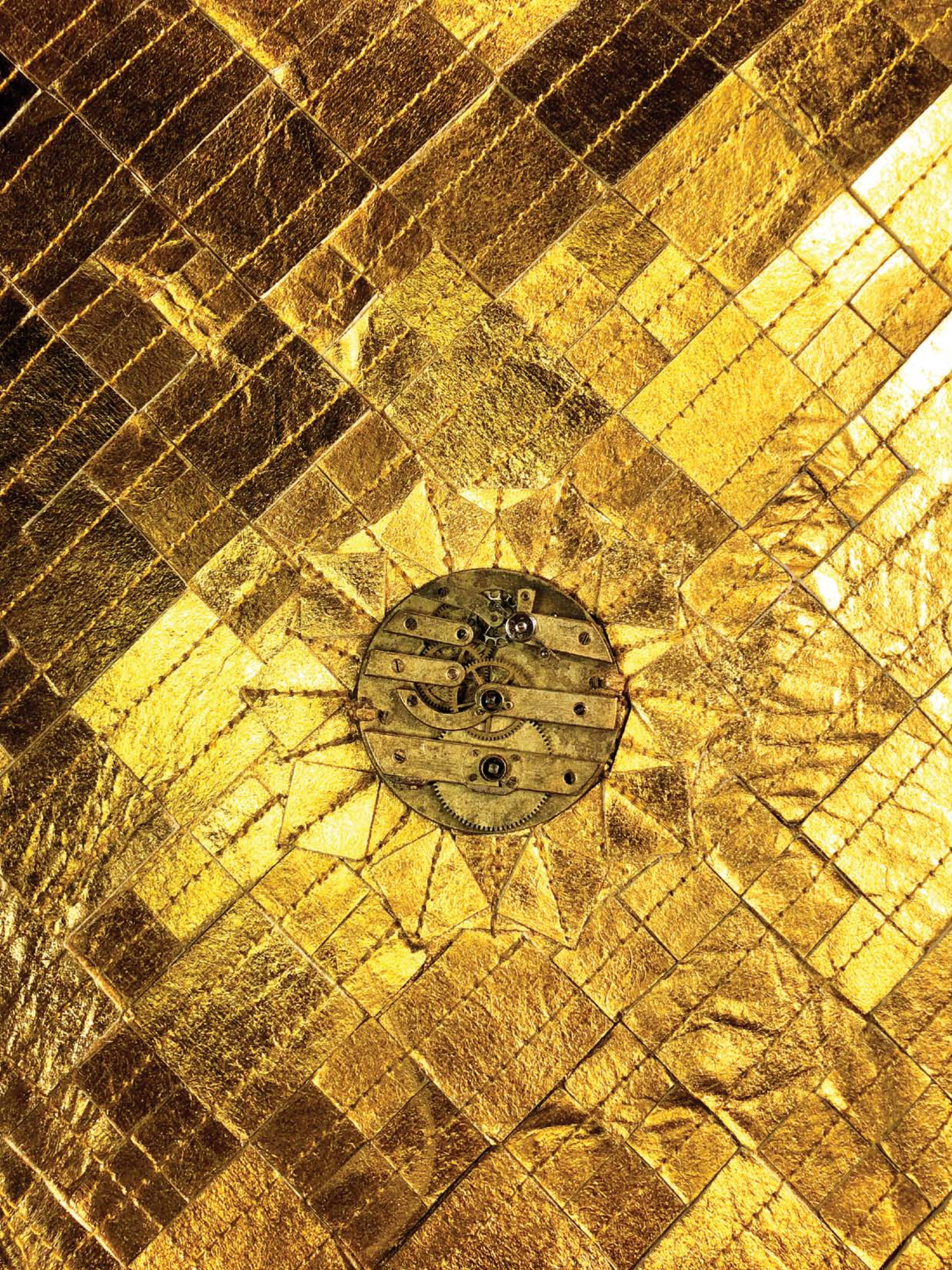




| CARNAVAL DA VIDA |

ASHLEY ALVES COLLECTION | **AV**



| COLLECTION INSPIRATION |

□ CARNAVAL DA VIDA | THE CARNAVAL OF LIFE

THE SUN RETURNS TO IT'S THRONE EMPOWERING ALL OF LIFE WITH A RENEWED RHYTHM. SHE LEADS THE DANCE IN SEA, EARTH, AND SKY AND ALL HER SUBJECTS FOLLOW. MOVING WITH PERCUSSIVE PASSION AND BRASSY BRAVURA, CREATION STEPS OUT OF IT'S OLD IDENTITIES AND INTO NEW POSSIBILITIES. WE ARE BRIGHT AND BOLD, TRANSFORMED FROM SEED TO FLOWERS, CATERPILLAR TO BUTTERFLY, SERPENT TO FIREBIRD. WHEREVER OR WHATEVER WE FIND OURSELVES IN THIS NEW WORLD, WE ALL SHARE A CELEBRATION OF NEW BEGINNINGS.

| SUSTAINABLE LUXURY |

BOLSA VERDE IS AN ALCHEMY OF TIMELESS AND INNOVATIVE MATERIALS FROM AROUND THE WORLD. DESIGNER ASHLEY ALVES SEARCHES MARKETS IN MEXICO, CABO VERDE, GHANA, PORTUGAL, SPAIN, FRANCE, INDIA, CHINA AND JAPAN FOR TEXTILES, ACCESSORIES, AND INSPIRATION. FROM VIBRANT AFRICAN WAX FABRIC, 19TH CENTURY FRENCH BROCADE, BLOCK PRINT KIMONO, TO VOLCANIC ROCK, MARBELIZED CORK, AND PINEAPPLE LEAF FIBERS, SHE WEAVES TOGETHER SOMETHING UNIQUELY BOLSA VERDE. EACH BAG IS A WORK OF ART, A HANDCRAFTED STORY OF EARTH'S NATURAL HISTORY AND THE IMPACT OF HUMANITY ON IT.

| FORWARD LOOKING |

IN SEARCH OF ALTERNATIVES TO LEATHER AND ENVIRONMENTALLY UNSUSTAINABLE MATERIALS, ASHLEY ALVES HAS BEGUN A PARTNERSHIP WITH PIÑATEX MANUFACTURER ANANAS ANAM. MADE FROM PINEAPPLE LEAF FIBERS, PIÑATEX IS AN EXTREMELY DURABLE NON-WOVEN TEXTILE THAT HAS PROVIDED NEW RECYCLING AND REVENUE OPPORTUNITIES FOR FARMING WASTE. IN RECENT MONTHS ASHLEY ALVES HAS EXPERIMENTED WITH AN ORGANIC DYEING PROCESS TO PRODUCE A NEW RANGE OF CUSTOM PIÑATEX COLORS FOR BOLSA VERDE'S CARNAVAL DA VIDA COLLECTION.

| POSITIVE IMPACT |

ASHLEY ALVES BELIEVES IN MAKING A POSITIVE IMPACT ON THE WORLD THAT INSPIRES HER. TAKING A PERCENTAGE FROM THE SALE OF EACH BOLSA VERDE AND INVESTING IN THE FUTURE OF NON-PROFITS LOCALLY AND ABROAD IS ONE WAY SHE DOES THAT.

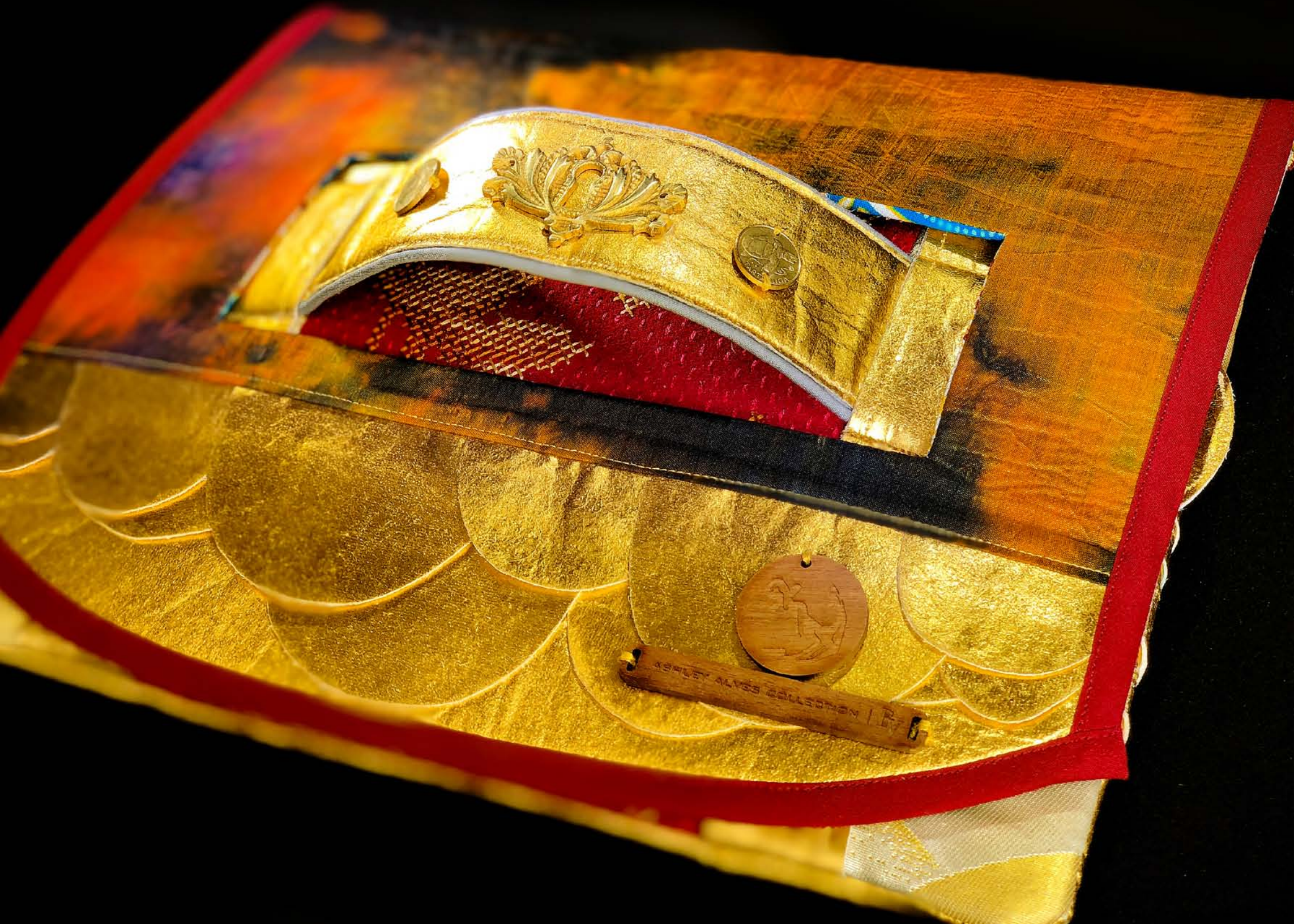




porto

por·to | Secure Harbor : Travel, Trade, Economy, Livelihood

secure & connected

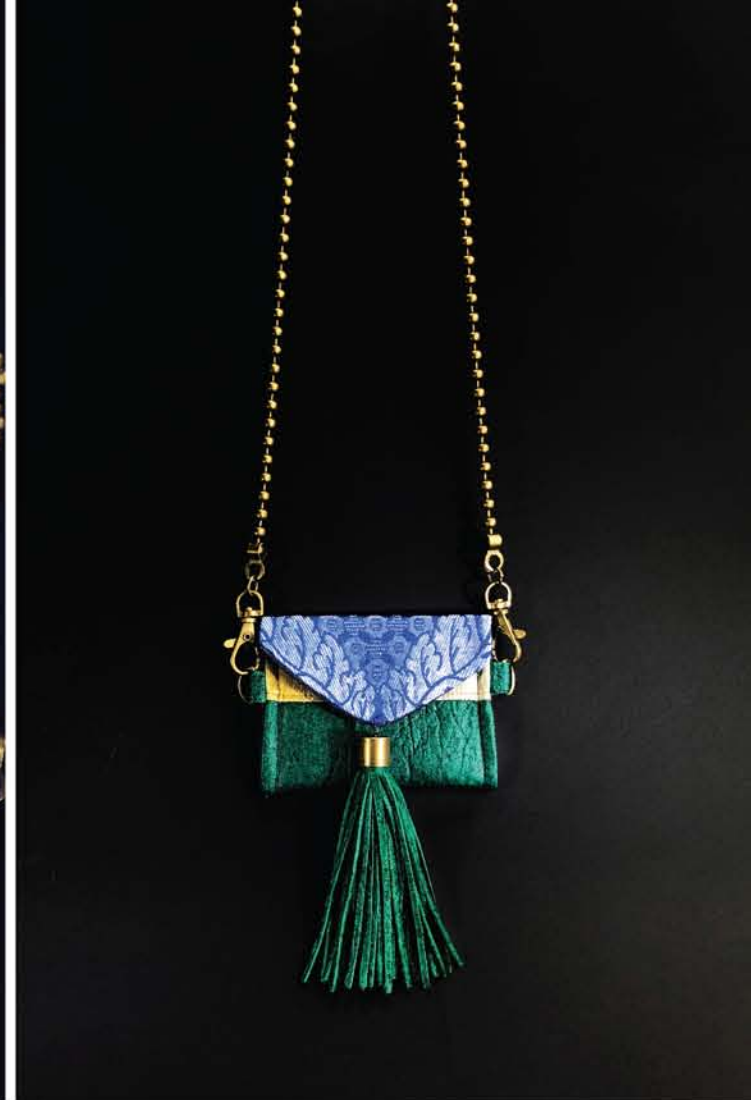


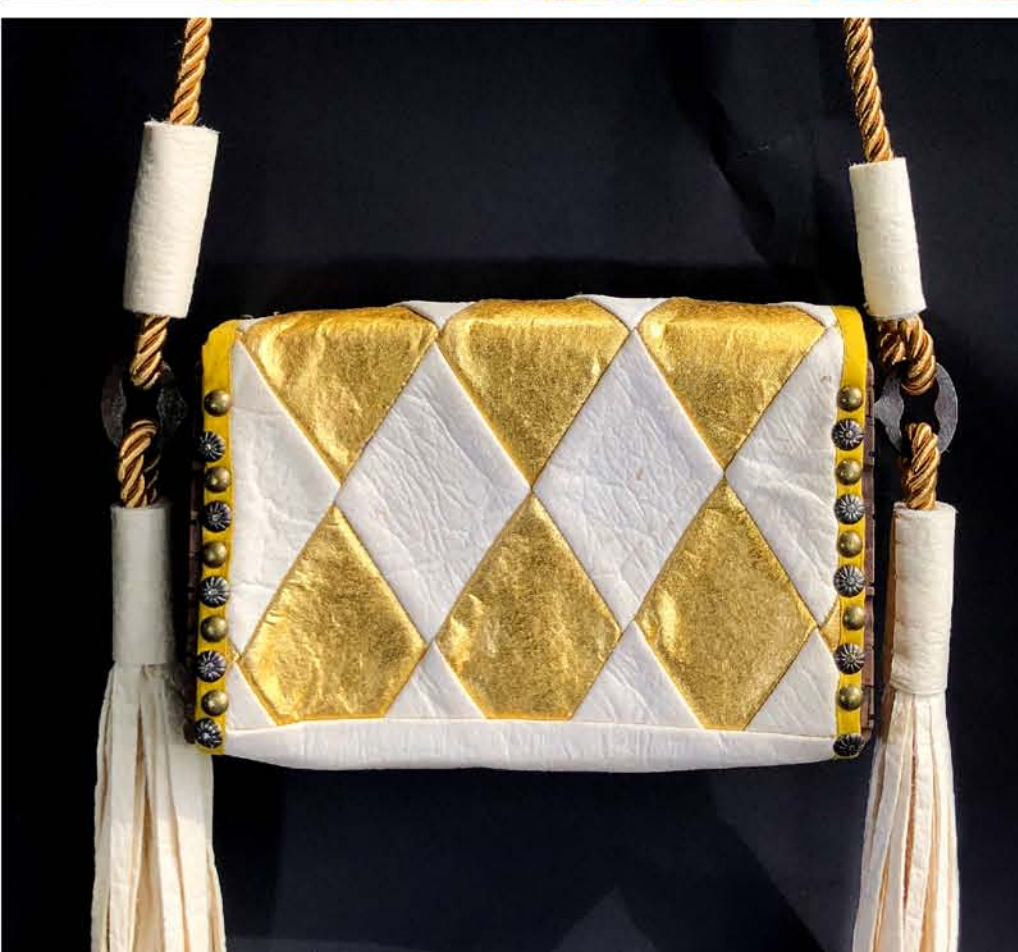












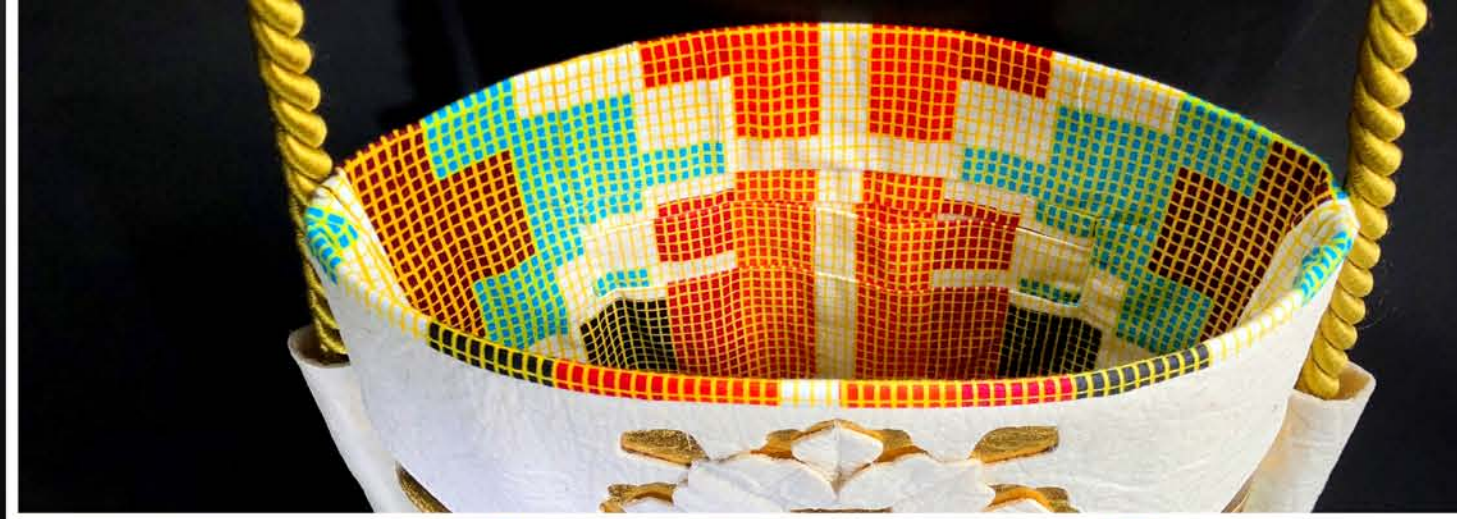


flora

flor•a | Plant Life of a Region

organic • rooted





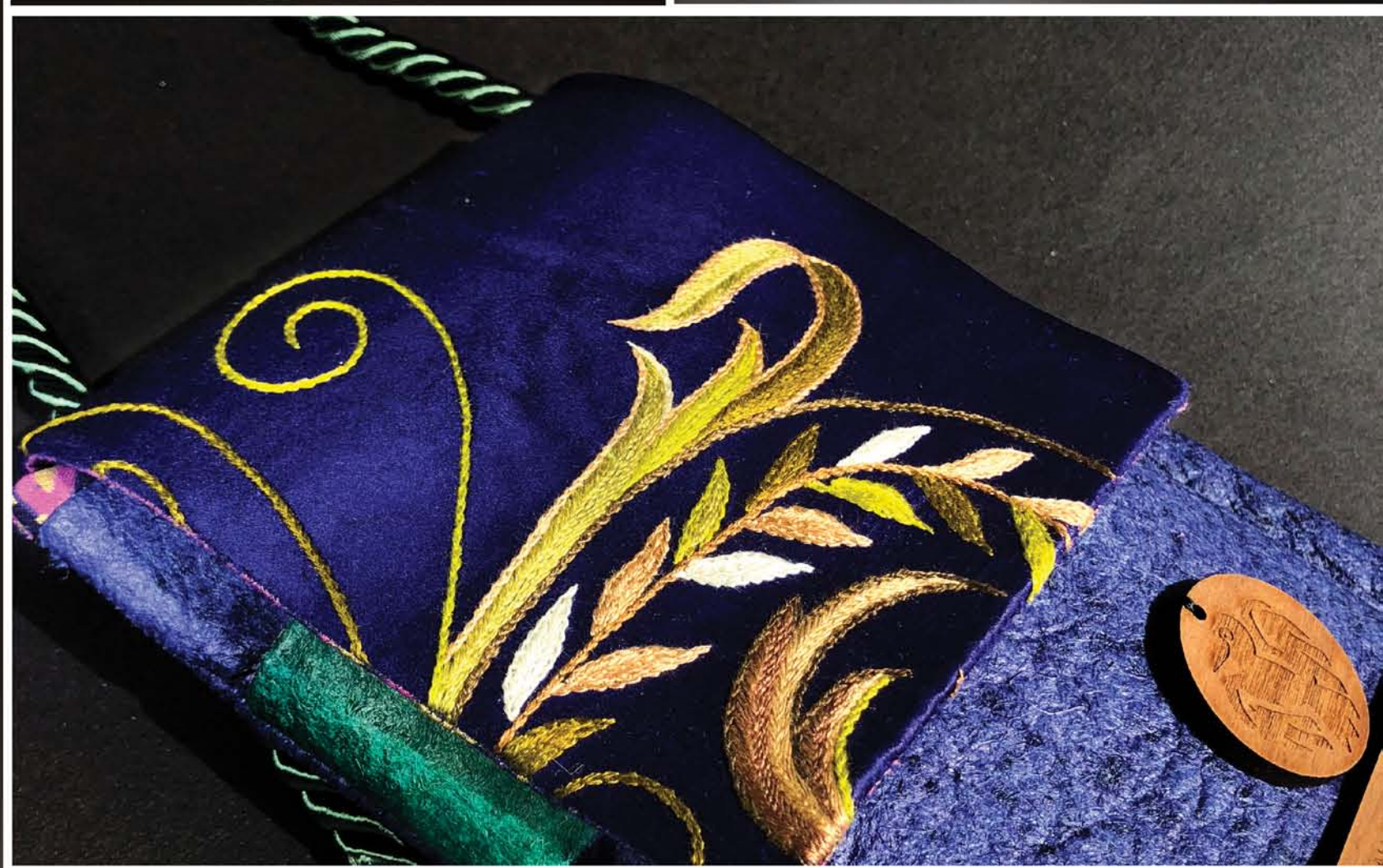




fauna

fau·na | Animals Characteristic of a Region

free-motivated





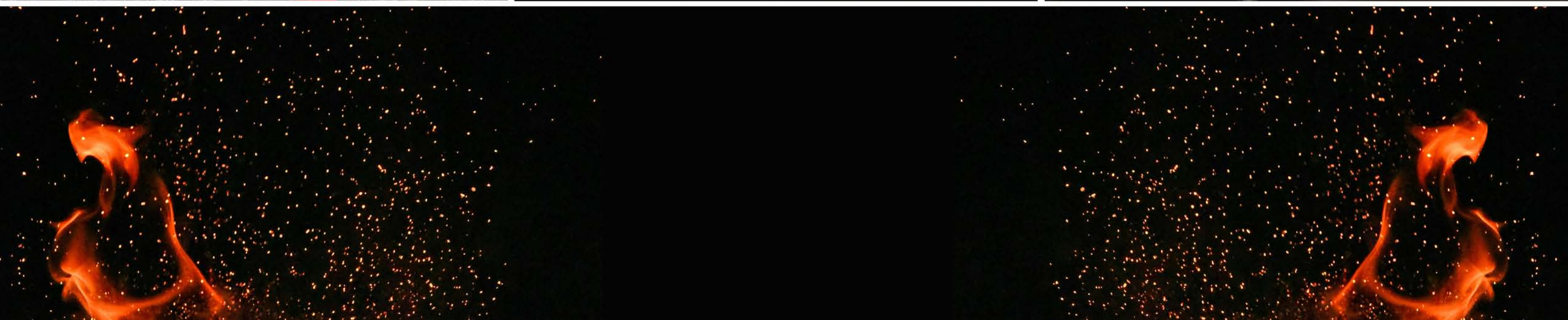




fogo

fo·go | Fire ... My island of origin

passionate • creative









mar

mar | Endless Ocean of Wonders

graceful · deep











ASHLEY ALVES COLLECTION | RY

ASHLEY ALVES COLLECTION | BV

WWW.ASHLEYALVESCOLLECTION.COM