

Standard 16 Way (8+8) Fused Distribution Unit For The Telecoms Industry 2023

Edition V1 - April 2023

Part number; 8+8FDU

Design & Manufacturers of:

| AC Switchgear | DC Switchgear | Bespoke Control Panels | AC & DC PDC's & PDU's |
| Copper Junction Boxes | Marshalling Panels | Transition Boxes | Earth Bars |

Contents

Page	
2	Introduction
3	Technical Information
4	Schematic Diagram
5	General Arrangement Drawings
6	Possible DC Input configurations

All ratings based on an operating temperature of 40°C ambient temperature, with 50°C temperature rise



Head Office:
34 Forest Road
Hinckley
Leicestershire
LE10 1HB
Tel: 01455 234996
Email: info@amjelectricaldesigns.co.uk
Web: www.amjelectricaldesigns.co.uk

Workshop:
Units 53 & 73 Sparkenhoe Business Centre
Southfield Road
Hinckley
Leicestershire
LE10 1UB
Tel: 01455 616686
Email: info@amjelectricaldesigns.co.uk

STANDARD 16 WAY (8+8) FUSED DISTRIBUTION UNIT

Fused distribution unit for telecoms 19" racks.

Rated -48V DC at 32A per A and B feed

8 ways for A feeds (max10A fuses)

8 ways for B feeds (max10A fuses)

Can be loop fed to create a single 16 way board

LED to show fuse is fitted and healthy

Accepts 6.3mm x 32mm fuses, 6A fitted

5mm x 20mm fuses can be fitted with different fuse cap



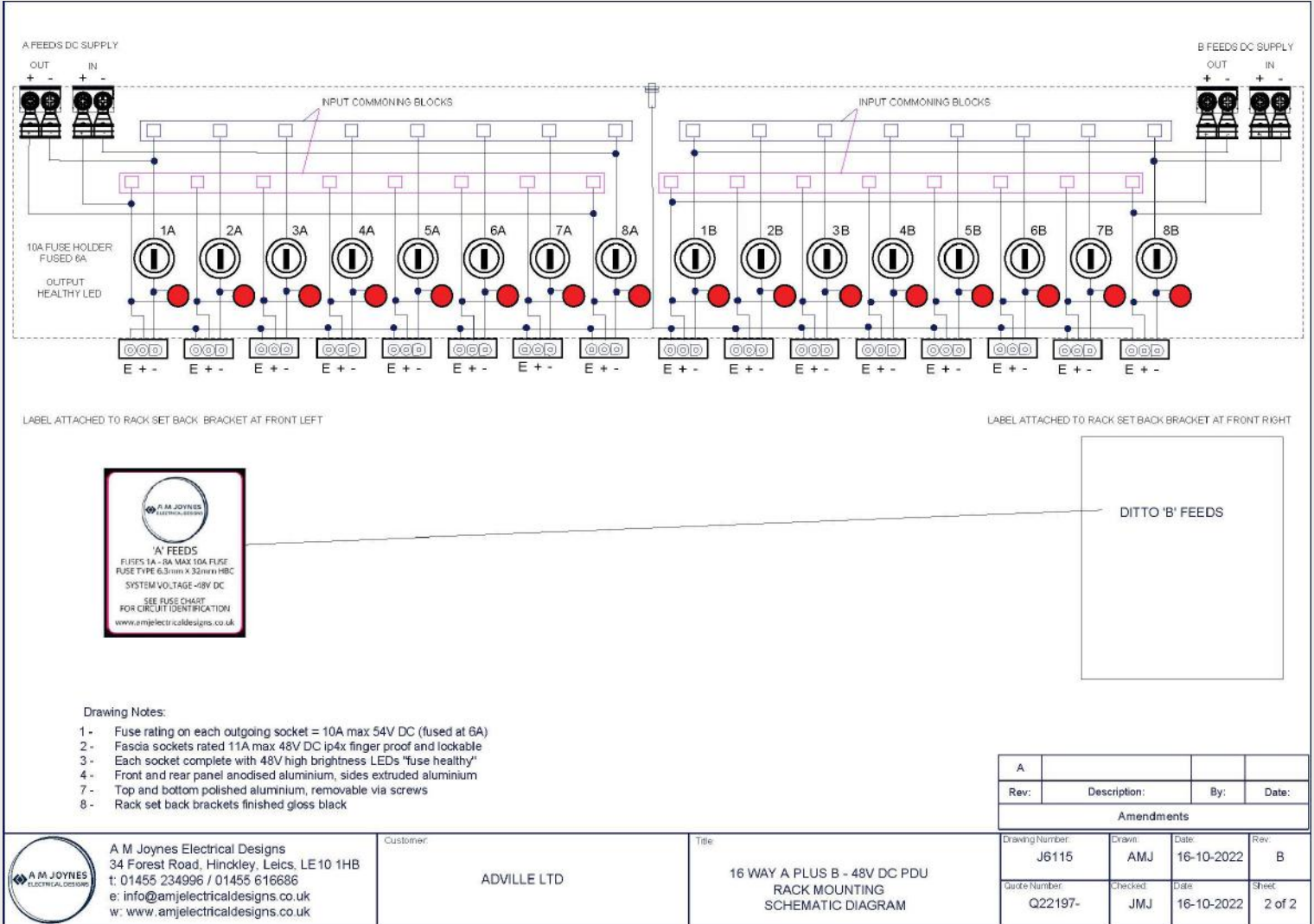
Technical Information

TECHNICAL DATA	
Supply Voltage	MINUS 48V DC
Supply Current	32A
Supply Terminals	A FEED IN = 32A POS AND NEG UPTO 6mm2 A FEED OUT = 32A POS AND NEG UPTO 6mm2 B FEED IN = 32A POS AND NEG UPTO 6mm2 B FEED OUT = 32A POS AND NEG UPTO 6mm2
Earthing arrangement	ISOLATED EARTH SUITABLE FOR UPTO 16mm2
Operating temperature	Minus 30 DegC to Plus 60 DegC
Mechanical Protection	IK08
Construction	Lid and base 2mm Polished Aluminium Front and rear 2mm Aluminium with silver pvc label Sides 66 x 22 Aluminium profile
Min degree of protection	IPxxB AND IP4x
Compliance	EN60670 and EN60950
Intended use	19" Rack mounting 1 1/2 U
Configurable	All A, All B, separate A and B
Max output	10A per way
Output Sockets	Molex 19-09-2038 with male pins 02092118 Suitable for Molex cable assembly 11254201
Output Plugs	MOLEX 19-09-1039 (no pins fitted) for IP only
Weight	2.75KG

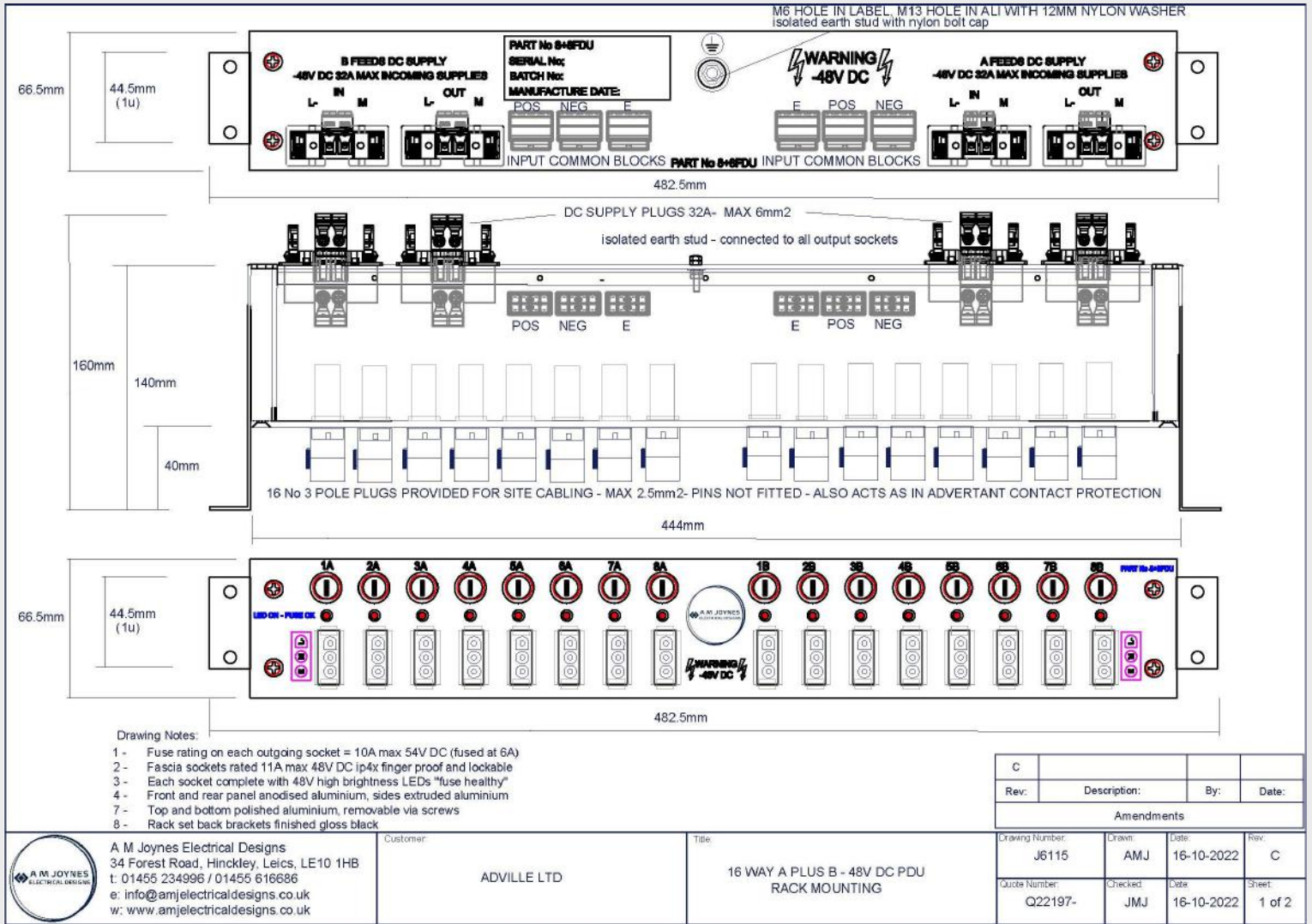
Head Office:
34 Forest Road
Hinckley
Leicestershire
LE10 1HB
Tel: 01455 234996
Email: info@amjelectricaldesigns.co.uk
Web: www.amjelectricaldesigns.co.uk

Workshop:
Units 53 & 73 Sparkenhoe Business Centre
Southfield Road
Hinckley
Leicestershire
LE10 1UB
Tel: 01455 616686
Email: info@amjelectricaldesigns.co.uk

SCHEMATIC DIAGRAM

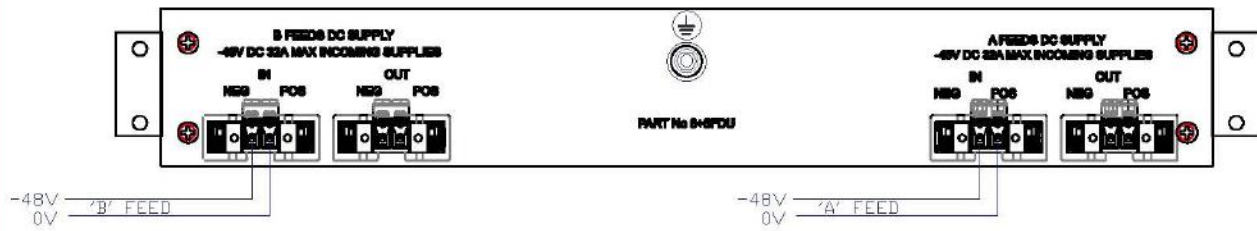


GENERAL ARRANGEMENT DRAWINGS

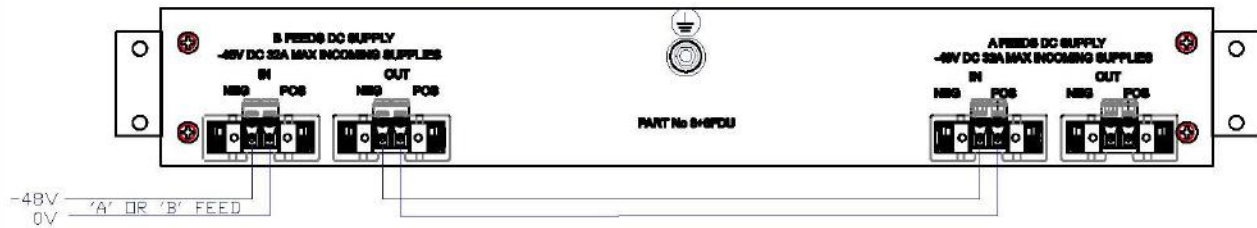


POSSIBLE DC INPUT CONFIGURATIONS

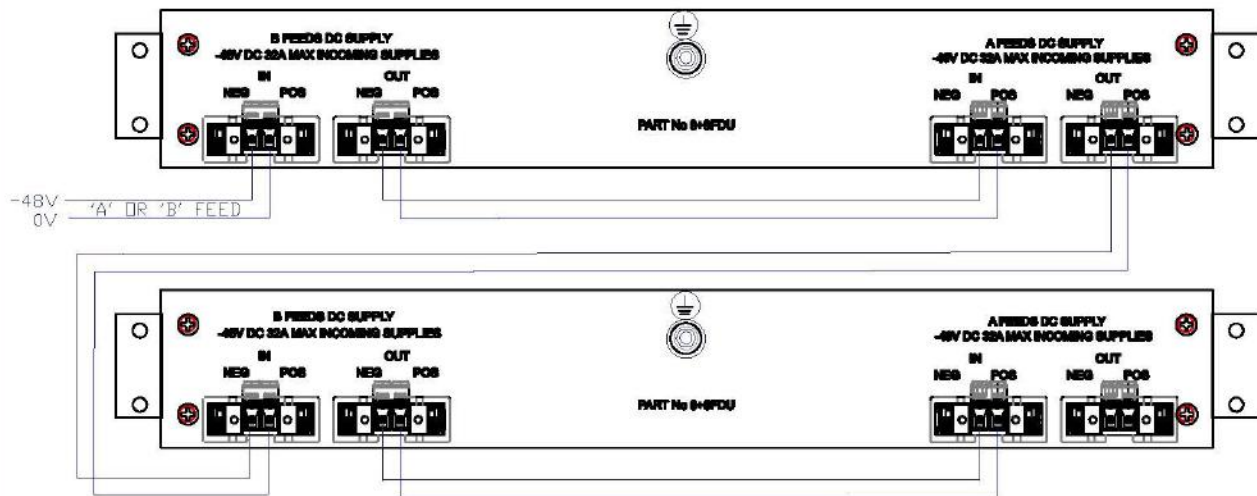
SINGLE 8 + 8 FDU WITH SEPERATE 'A' AND 'B' FEEDS



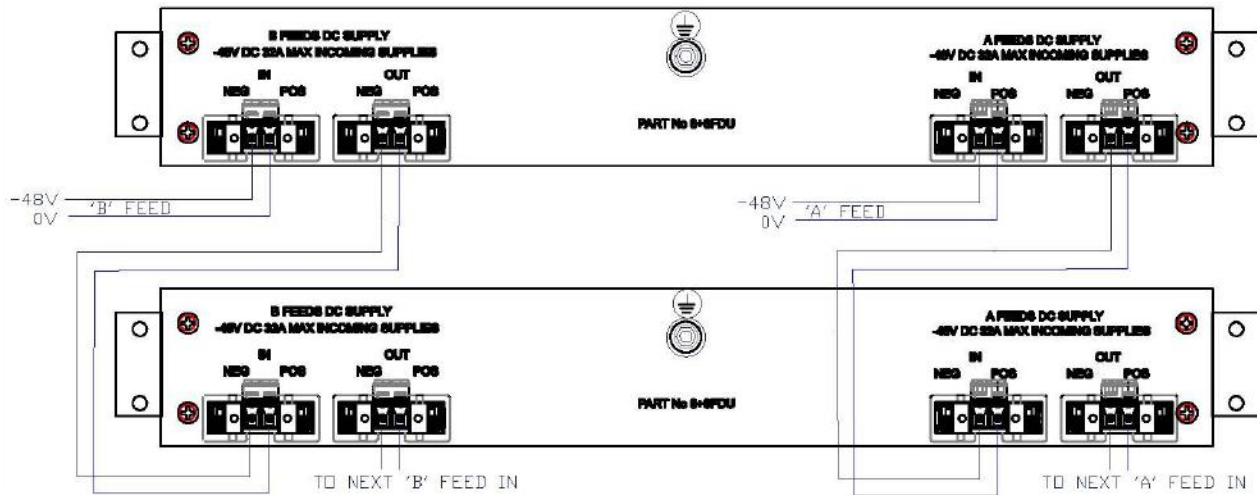
SINGLE 8 + 8 FDU WITH SINGLE 'A' OR 'B' FEED

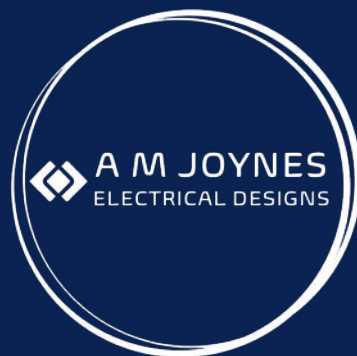


MULTIPLE 8 + 8 FDU WITH SINGLE 'A' OR 'B' FEED



MULTIPLE 8 + 8 FDU WITH BOTH 'A' AND 'B' FEEDS





Head Office:

34 Forest Road

Hinckley

Leicestershire

LE10 1HB

Tel: 01455 234996

Email: info@amjelectricaldesigns.co.uk

Web: www.amjelectricaldesigns.co.uk

Workshop:

Units 53 & 73 Sparkenhoe Business Centre

Southfield Road

Hinckley

Leicestershire

LE10 1UB

Tel: 01455 616686

Email: info@amjelectricaldesigns.co.uk