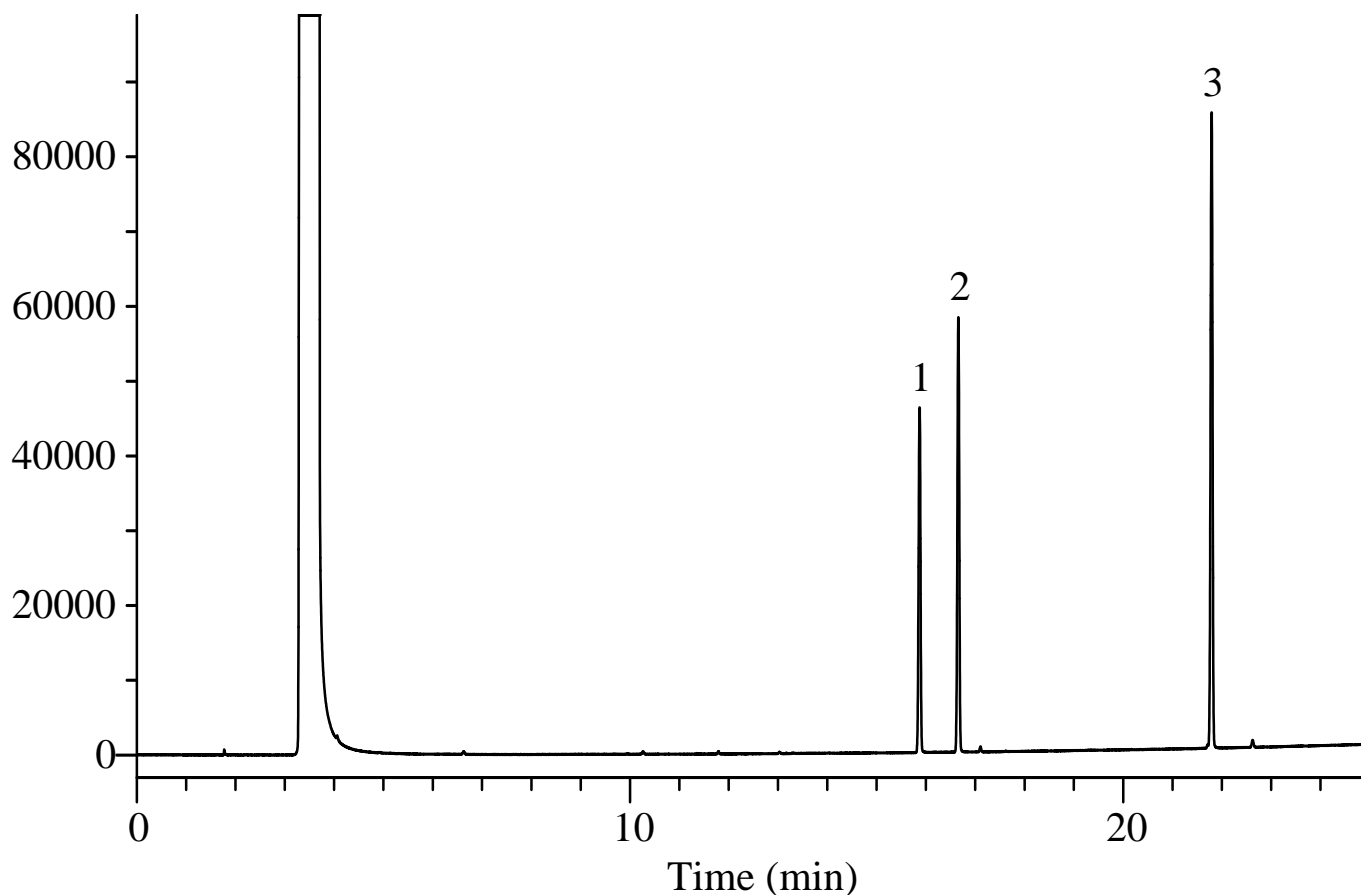


# InertSearch™ for GC

InertCap® Applications

## Lactate ester

Data No. GA116-0875

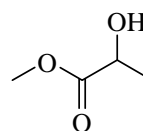


### Conditions

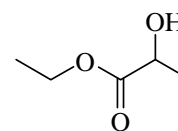
**System** : GC/FID  
**Column** : InertCap Pure-WAX  
0.25 mm I.D. x 30 m df = 0.25 µm  
**Col. Cat. No.** : 1010-68142  
**Col. Temp.** : 40 °C (5 min hold) - 5 °C/min - 200 °C  
**Carrier Gas** : He 100 kPa  
**Injection** : Split flow 67 mL/min  
250 °C  
**Detection** : FID Range 10<sup>0</sup>  
250 °C  
**Sample Size** : 1000 µg/mL in Methanol  
1.0 µL

**Analyte** : 1. Methyl lactate  
2. Ethyl lactate  
3. Butyl lactate

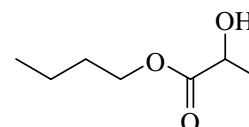
### Chemical Structure



1. Methyl lactate



2. Ethyl lactate



3. Butyl lactate

Structures are created using Chemistry 4-D Draw which is provided by ChemInnovation Software, Inc.