

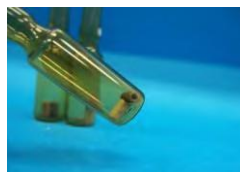
# Easy Concentration & Analysis of Shaoxing Rice Wine Aroma Compounds by MonoTrap TD – Thermal Desorption

MonoTrap TD RGC18TD (graphite carbon contained) for Thermal Desorption. No need for conditioning before use.

## Protocol

Shaoxing rice wine

Pour 30 mL of rice wine into a 40 mL vial



RGC18TD

HeadSpace Sampling  
MonoTrap RGC18TD × 1pcs

3 hours at room temperature

TD/GC/MS

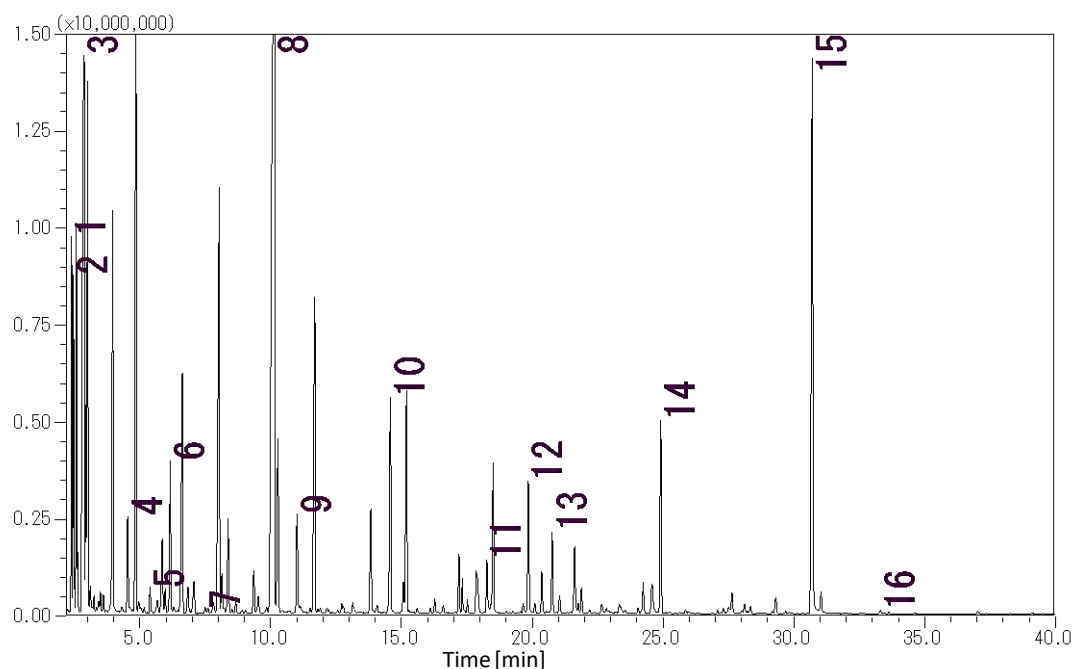


Clean Pin Hole  
Septum With vial  
MT Holder

Head Space Sampling Image

### GC Conditions

<b>System</b>	: GC/MS-Thermal Desorption (T-Dex II)
<b>Column</b>	: InertCap Pure-WAX 0.25 mm I.D. × 30 m, df = 0.25 μm
<b>Col.Temp.</b>	: 40 °C (5 min) - 4 °C/min - 250 °C
<b>Carrier Gas</b>	: He 1 mL/min (constant flow)
<b>Desorb Temp.</b>	: 200 °C
<b>Time</b>	: 5 min
<b>Flow</b>	: 2 mL/min
<b>Split</b>	: Splitless
<b>Cryo Trapping</b>	: -160 °C
<b>Injection Temp.</b>	: 250 °C
<b>Detection</b>	: MS Scan ( <i>m/z</i> 40 - 600)



- |                             |  |
|-----------------------------|--|
| 1. Ethyl acetate            | 9. Ethyl hexanoate                         |
| 2. Ethylidene diethyl ether | 10. Ethyllactate                           |
| 3. Ethyl alcohol            | 11. Furfural                               |
| 4. Ethyl butanoate          | 12. Benzaldehyde                           |
| 5. Ethyl 3-methylbutanoate  | 13. 2,3-Butanediol                         |
| 6. Isobutyl alcohol         | 14. Ethyl succinate                        |
| 7. Ethyl pentanoate         | 15. Phenylethyl alcohol                    |
| 8. Isopentyl alcohol        | 16. $\gamma$ - <i>n</i> -Amylbutyrolactone |

### MonoTrap series products lineup



RGC18TD



RSC18TD

GL Sciences disclaims any and all responsibility for any injury or damage which may be caused by this data directly or indirectly. We reserve the right to amend this information or data at any time and without any prior announcement.

#### **GL Sciences, Inc. Japan**

22-1 Nishishinjuku 6-Chome  
Shinjuku-ku, Tokyo,  
163-1130, Japan  
Phone: +81-3-5323-6620  
Fax: +81-3-5323-6621  
Email: [world@glsc.co.jp](mailto:world@glsc.co.jp)  
Web: [www.glsciences.com](http://www.glsciences.com)

#### **GL Sciences B.V.**

De Sleutel 9  
5652 AS Eindhoven  
The Netherlands  
Phone: +31 (0)40 254 95 31  
Email: [info@glsciences.eu](mailto:info@glsciences.eu)  
Web: [www.glsciences.eu](http://www.glsciences.eu)

#### **GL Sciences (ShangHai) Ltd.**

Tower B, Room 2003,  
Far East International Plaza,  
NO,317 Xianxia Road,  
Changning District.  
Shanghai, China P.C. 200032  
Phone: +86 (0)21-6278-2272  
Email: [contact@glsciences.com.cn](mailto:contact@glsciences.com.cn)  
Web: [www.glsciences.com.cn](http://www.glsciences.com.cn)

#### **GL Sciences, Inc. USA**

4733 Torrance Blvd. Suite 255  
Torrance, CA 90503  
Phone: 310-265-4424  
Fax: 310-265-4425  
Email: [info@glsciencesinc.com](mailto:info@glsciencesinc.com)  
Web: [www.glsciencesinc.com](http://www.glsciencesinc.com)

#### **International Distributors**

Visit our Website at:

<https://www.glsciences.com/company/distributor.html>