



University of
Pittsburgh®

Health Policy
and Management
School of Public Health



Academic Year 2022-23
Annual Report

A Letter from the Chair of Health Policy and Management



Greetings from the Department of Health Policy and Management (HPM)!

We are excited to share news and accomplishments from the last year with you. Our master's degree programs are growing and moving up in the rankings. We are actively involved in the School of Public Health's new Bachelor of Science in Public Health (BSPH). Our graduates have gone on to promising careers in the health care industry, government organizations, academia and the non-profit sector. We are actively engaging practitioners in the healthcare management and policy realms to serve as mentors, preceptors, instructors and Executive and Public Health Leaders in Residence. It has been a great pleasure to meet HPM alumni who are leaders in the field at events in Chicago, Houston, Pittsburgh and Seattle.

We are engaged in cutting edge research to inform policymakers and health system leaders on how best to improve access, equity, quality and efficiency in health care and public health systems. In the last three years, our research grant funding has grown by 60%. Our students, staff and faculty benefit from the incredible research environment at Pitt which ranked third in the country in National Institutes of Health funding last year. We are proud of the real-world impact that our research has on local, state and federal policymaking and on innovations in healthcare delivery. Our commitment to contributing to our community through teaching, research and service has never been stronger. We hope you enjoy seeing what we've been up to over the last year and hope to connect with you soon!

On the Cover (Clockwise from top left):
-HPM MPH students outside of UPMC headquarters after a presentation to the organization's risk assessment team
-PhD candidate Donald Bourne (left) and Pitt Public Health Dean Dr. Maureen Lichtveld at the 2023 Dean's Day competition
-Noelle Cornelio (PhD '23), Alice Gao (PhD '23), Dr. Coleman Drake, Amy Raselevich (PhD '23) and Dr. Lindsay Sabik at Pitt Public Health commencement
-HPM students at the American College of Health Care Executives (ACHE) Congress in Chicago
-Catherine Carr (MHA '23) and Dr. Kevin Broom at Pitt Public Health commencement

Julie M. Donohue, PhD

Professor and Chair,
Health Policy and
Management

About Health Policy and Management

- 5** | Fast Facts
- 6** | New Faculty and Staff

Health Policy and Management Research

- 9** | HPM in the News
- 10** | Grants and Select Publications

Academics

- 12** | Meet Our Students
- 14** | MHA Program
- 16** | MPH Program
- 18** | PhD Program
- 16** | BSPH Program

Department Updates

- 22** | Dawn Gideon Symposium
- 24** | Dean's Day Winners
- 28** | Agency for Healthcare Research and Quality Director Visits Pitt

HPM Alumni and Commencement

- 33** | Alumni Awards
- 35** | Commencement 2023

9



28



35



About Health Policy and Management



In November 2022, HPM faculty and staff gathered at the William Pitt Union for a department retreat. Everyone in attendance gathered together for a group picture on the lawn of the union for the first time since the pandemic.

Our History

Since its inception in 1950, our department has had a rich history of educating individuals for careers in health policy and management. Our strengths include: Medicaid policy, cancer care, opioids, health equity, maternal and reproductive health, health insurance markets, pharmaceutical policy, long-term care, aging and disability, mathematical modeling and simulations, learning health system science. Top health care leaders in our region and around the country are alumni of HPM programs. They serve in key roles in health care systems, hospitals, government agencies, research and consulting groups and more.

Our Mission

The Department of Health Policy and Management seeks to:

- Advance knowledge and practice in the management of health care and public health systems
- Understand the factors driving access, quality, efficiency and equity of health services delivery and health outcomes
- Inform health policy development and implementation at the federal, state and local levels

This mission is achieved by department faculty, staff and students engaging in undergraduate and graduate education, scholarship and service. We are actively engaged with practitioners and policymakers in health and public health systems to advance knowledge.

Our department produces high-impact research and educates future leaders engaged in transforming public health and health systems to improve health and well-being.

Our Core Values

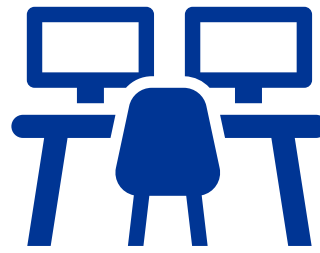
- Integrity and accountability
- Citizenship
- Professionalism (as exemplified by ACHE and Association of Schools and Programs of Public Health (ASPH) standards)
- Commitment to excellence
- Research—furthering evidence-based practice and the state of knowledge in HPM foundational disciplines
- Teaching—combining state-of-the art technologies and knowledge with effective adult teaching methods
- Service—participation in community service and civic engagement linked our teaching and research endeavors

HPM Fast Facts



18
Primary Faculty

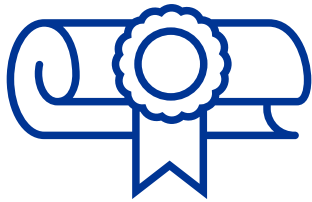
16
Adjunct Faculty



26
Full-Time Staff

15 Research
8 Administrative

Degree Programs



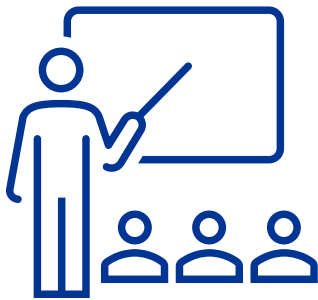
The **Master's in Health Administration (MHA)** was established in 1981. It was preceded by a management-focused MPH established in 1949. A joint MHA/MBA with the University of Pittsburgh Katz Graduate School of Business was re-established in 2016.

A **Master's in Public Health (MPH)**, re-established in 1995. A joint JD/MPH with the University of Pittsburgh School of Law was established in 2007.

A **Doctorate in Health Services Research and Policy (PhD)** was established in 2008 and has been part of a joint MD/PhD program with the University of Pittsburgh School of Medicine since 2018.

The **Master of Science** which focuses on preparing students for a PhD, was established in 2014.

The University of Pittsburgh School of Public Health's **Bachelor of Science in Public Health (BSPH)** program launched in the fall of 2022.



64
Courses offered by HPM

43 Taught by Primary Faculty

19 Taught by Adjunct Faculty

2 Taught by Secondary Faculty



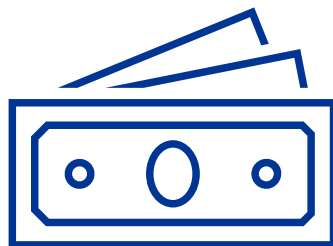
87
Peer-reviewed publications by HPM faculty in the past year in journals including:

Cancer, JAMA, JAMA Internal Medicine, JAMA Health Forum, Health Affairs, Health Services Research, Journal of Health Economics, NEJM and Vaccine

43
Active grants or contracts

18 with HPM Faculty as Principal Investigator

25 with HPM Faculty as co-Investigator



Federal Funding Sources

Agency for Healthcare Research and Quality (AHRQ), Centers for Disease Control and Prevention (CDC), Food and Drug Administration (FDA), Health Resources and Services Administration, National Institute on Aging (NIA), National Cancer Institute (NCI), National Institute of Dental and Craniofacial Research (NIDCR), National Institute on Drug Abuse (NIDA), National Institute of Nursing Research (NINR), National Institute for Minority Health and Health Disparities (NIMHD), National Institute for Reproductive Health (NIRH), Patient-Centered Outcomes Research Institute (PCORI), US Department of Veterans Affairs (VA)

Foundation Funding Sources

American Cancer Society, Arnold Ventures, Commonwealth Fund, Donaghue Foundation, Jewish Healthcare Foundation, Richard King Mellon Foundation, Robert Wood Johnson Foundation

State and Local Funding Sources

Allegheny County Department of Human Services, Pennsylvania Department of Health, Pennsylvania Department of Human Services

\$14.5M Total direct costs in grants or contracts

New Faculty and Staff



Lucy A. Savitz, PhD, MBA
Professor & Director of
External Affairs

The Department of Health Policy and Management welcomed **Lucy A. Savitz, PhD, MBA** as a professor and director of external affairs in September 2022. She has more than 30 years of experience in health care delivery and health services research. In addition to her HPM appointment, she is a senior innovation advisor to the UPMC Health Plan Center for High-Value Health Care. Before joining Health Policy and Management, Savitz was vice president for health research in Kaiser Permanente's Northwest Region and director of the Kaiser's Center for Health Research based in Portland, Oregon. She has dedicated her career to advancing learning health system science and preparing tomorrow's public health workforce.



Jacqueline Ellison, PhD, MPH
Assistant Professor

Health Policy and Management welcomed **Jacqueline Ellison, PhD, MPH** as an assistant professor in August 2022. Ellison is also a co-investigator with the Center for Innovative Research on Gender Health Equity (CONVERGE) in the Department of General Internal Medicine at the Pitt School of Medicine. She is a health services researcher with interests at the intersections of reproductive health care policy, financing and equity. Her research evaluates the effect of policies and clinical practice on sexual and reproductive health inequities. She is also doing work to advance measurement methods using real-world data. Prior to her research career, Ellison worked as a counselor for an independent abortion provider in North Florida, an experience that very much informs her research agenda and approach.



J. Travis Donahoe, PhD, MPH
Assistant Professor

J. Travis Donahoe, PhD, MPH, joined Health Policy and Management an Assistant Professor in June 2023. He is a health economist whose research examines markets for addictive substances, (with a particular focus on opioids) and economic determinants of health. His research uses applied economic theory, state-of-the-art econometric methods and large novel datasets to provide new insights about these topics. He was recognized for his dissertation work by the American Society of Health Economists at its annual conference in June 2023. His work "Supplier Enforcement and the Opioid Crisis" studies the effects of shutting down prescribers, dispensers and distributors that inappropriately handle prescription opioids on local opioid supply and mortality and received the Best Student Paper award at the conference.



Praveen Kumar, PhD
Assistant Professor

Praveen Kumar, PhD, joined the department of Health Policy and Management in July 2023. His research interests lie in assessing the value of public health interventions and policies using decision modeling and cost-effectiveness analysis. Kumar's current research focuses on opioid use disorder and bladder cancer. He is a member of the National Cancer Institute-funded Cancer Intervention and Surveillance Modeling Network (CISNET). He earned his Ph.D. in Health Services Research and Policy with a focus in Decision Sciences from Pitt. Prior to joining the department as a faculty member, Kumar was a Senior Research Scientist with the Public Health Dynamics Laboratory at Pitt Public Health.



Sabnum Pudasainy
Senior Data Analyst

Sabnum Pudasainy joined HPM as a Senior Data Analyst in June 2022. She graduated in the spring of 2022 with a degree in Biostatistics from Pitt Public Health. A native of Nepal, Pudasainy has been living in the United States for more than six years now. In her spare time, she loves traveling and exploring new restaurants with friends, hiking, reading novels, watching movies and binge watching TV series.



Mike Friend
Communications Specialist

Mike Friend joined the department in August 2022 as a Communications Specialist. He is responsible for internal and external department communications, event planning and marketing and alumni relations. Prior to joining HPM, Friend worked in local TV news for nearly a decade. He earned both bachelor's and master's degrees in mass media arts, journalism and communication studies from Clarion University of Pennsylvania. In his spare time, you can find him on the golf courses and hiking trails of western Pennsylvania.



Jeremy Bilfield
Senior Data Analyst

Jeremy Bilfield joined HPM as a Senior Data Analyst in August 2022. He earned a bachelor's degree in Cognitive Neuroscience at the Ohio State University, and earned a master's in Public Policy & Data Analytics from Carnegie Mellon University in May 2023. A methodologist at heart, Bilfield is excited to apply ever-evolving data visualization, machine learning, and statistical modeling techniques to HPM's projects.



Sabin Gaire
Senior Data Analyst

Sabin Gaire joined HPM as a Senior Data Analyst in 2023. He holds a master's degree in biostatistics from the University of Iowa. His primary interests include using his statistical expertise in Bayesian statistics and longitudinal data analysis to contribute to the field of public health. Gaire is a native of Nepal and in his free time loves to play soccer and be outdoors.

Staff Recognition

The Department of Health Policy and Management would not run without its staff. In recognition of their efforts we'd like to recognize those who reached an employment milestone. This year marked 20 years at the University of Pittsburgh for HPM's administrative assistant **Rhonda Toth**. Congratulations Rhonda and we're so glad to work with you!

HPM Senior Data Scientist **Dr. Christine McClure** continues to inspire others and this year received multiple honors recognizing her hard work in the community. She was named a 2023 ChangeMaker by Multiplying Good Pittsburgh. ChangeMakers are community leaders selected for their commitment to creating a culture of kindness in southwest Pennsylvania. She was also named to the 2023 class of Ladies who Lead by the Professional Women's Network, honored with a Lifetime Achievement Award by The State of Black Learning and was the recipient of the 2023 Strong Award in the Professional Woman category by Strong Women, Strong Girls. Congratulations Dr. McClure. Thank you for all that you do for our community!

Health Policy and Management Research

“An innovative, high-impact research environment”

The University of Pittsburgh ranked third in the nation in total National Institutes of Health (NIH) funding. Across schools of public health, The University of Pittsburgh School of Public Health ranked sixth in NIH funding received.

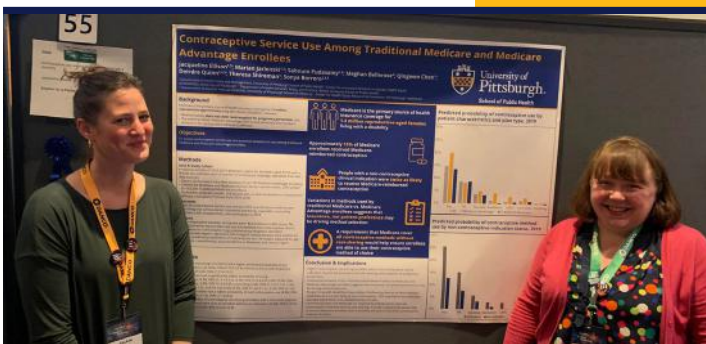


“Pitt Health Policy and Management faculty, staff and students continue to make out-size contributions to health care and health policy through high-impact research. Our ongoing research spans a range of policy and clinical areas that work alongside and in collaboration with disciplines from other schools. Accomplishments include nearly 90 peer-reviewed publications over the last year; millions of dollars in research funding from federal, state and local government and foundation sources; in coverage of our research and expertise and local and national media. HPM researchers and our partners continue to lead the way when it comes to producing research findings that lead to evidence-based policy to improve our communities.”

-Lindsay Sabik, PhD, Associate Professor and Vice Chair for Research

HPM Research Areas

Health Equity	Opioid Epidemic	Cancer Care
Medicare and Medicaid Policy	Mathematical Modeling and Simulation	Maternal and Reproductive Health
Pharmaceutical Policy	Learning Health System Science	Health Insurance Markets
Substance Use and Mental Health	Long-Term Care, Aging and Disability	Cost Effectiveness Analysis
Cardiovascular Health Disparities	Caregiving	Health Economics



HPM assistant professor Dr. Jackie Ellison (left) presents a research poster at the Society of Family Planning's annual meeting in December 2022



PhD candidate Alexandra Hames presents research at the American Society of Health Economists annual conference in St. Louis in June

Health Policy and Management in the News

In the past year, HPM experts have been quoted in **186** stories, with many being picked up by multiple outlets for a total of **1,074** media hits with a potential audience of **1.3 billion** people. Below is a selection:

Radio/Podcast Appearances

- As more states use tax filing information to connect people with Medicaid and other subsidized health insurance, Assistant Professor **Coleman Drake** talked with **NPR's** "Morning Edition" about what it means for people without insurance and how states can cut red tape to make it easier for people to get covered.
- HPM's **Howard Degenholtz** appeared on "The Confluence" on **90.5 WESA** to discuss the biggest challenges the health care industry is facing in the wake of the COVID-19 pandemic, especially in acute and long-term care facilities.
- Twelve million people in the United States are currently eligible for both Medicare and Medicaid. Many dual-eligibles are high-cost, high-care patients who often have unmet social needs. Assistant Professor **Eric Roberts** joined "**A Health Podyyssey**," a podcast produced by Health Affairs to discuss research findings that could improve health care among the nation's most vulnerable.
- Following the publication of research that found nearly half of Medicaid beneficiaries who receive treatment for opioid abuse do not receive follow up care, Research Associate Professor **Evan Cole** discussed the findings with Rick Dayton on **KDKA Radio. (100.1 FM & AM 1020)** The findings are the first to study patient and episode-level factors related to the likelihood of receiving post-discharge follow-up among recipients of Medicaid.
- During the pandemic people spent up to 90 percent of their time at home. Pitt's Healthy Home Lab is a new community laboratory, aimed at maximizing home health and safety especially, for aging adults. **A. Everette James**, M. Allen Pond Professor of Health Policy and Management, and director of the Health Policy Institute, discussed what research can and will be done there with both "The Confluence" on **90.5 WESA** and the **Pittsburgh Post-Gazette**.

Print/Digital Media Interviews and Publications

- Data show Black women had a greater probability of undergoing urine toxicology testing at delivery compared with other racial groups regardless of substance use history. HPM's **Marian Jarlenski** talked about the findings and implications of her study with **The New York Times, Helio, Axios** and **KDKA-TV (CBS Pittsburgh)**.
- In September 2022, **NPR** published an article detailing the wide reach of Catholic health systems in the United States and issues patients face when religious doctrine prohibits doctors from prescribing contraceptives. The article cited a 2020 study by Associate Professor **Marian Jarlenski** and Assistant Professor **Coleman Drake** that found 40% of reproductive age women in the U.S. live in areas where Catholic hospital systems maintain high or dominant market shares.
- Medicaid enrollment grew by around 25% between February 2020 and May 2022. HPM Professor and Chair **Julie Donohue** and Assistant Professor **Eric Roberts** whose study on the matter was published in September 2022 in the Journal of the American Medical Association, took a deep dive into the subject for **The Conversation**. The Conversation is a nonprofit, independent news organization that works with experts to share knowledge with wide public interest. The article was republished by multiple local and regional media outlets including **The Seattle Post Intelligencer, The Houston Chronicle** and **Yahoo! News**.
- After the FDA approved the first over-the-counter birth control medication, pharmacists and local pharmacies are playing a larger role in reproductive health care. Associate Professor **Marian Jarlenski** and Lucas Berenbrok, associate professor of pharmacy and therapeutics examined what roles pharmacists now have in an article for **The Conversation**.
- With more states legalizing marijuana, there have been some unintended consequences. HPM's **Coleman Drake** discussed research into the connection between marijuana legalization and binge drinking with **U.S. News and World Report**.
- Flu season hit Americans hard this year, HPM's **Mary Krauland** spoke to **WIRED** about why it seemed so much worse than the past few years.
- After a measles outbreak in Columbus, Ohio, in November 2022, Pittsburgh-based physicians worried the outbreak could spread. HPM Distinguished Professor **Mark S. Roberts** was quoted in **Pittsburgh Post-Gazette** coverage about the dangers of vaccine misinformation and a decline in herd immunity.

Health Policy and Management Research

Health Policy and Management Faculty Awarded Grants and Funding for Research, Career Development



Brittany Brown-Podgorski, PhD, MPH
Assistant Professor

Title:

Understanding Structural Contributors to Subclinical CVD Among U.S. Black Women

Sponsor:

NIH Office of Research on Women's Health



Howard Degenholtz, PhD
Professor

Title:

Effect of Medicaid Managed Care on Behavioral Health

Sponsor:

Donaghue Foundation



Julie Donohue, PhD
Professor and Chair

Title:

Improving Racial Equity in Opioid Use Disorder Treatment in Medicaid

Sponsor:

National Institute on Drug Abuse



Lindsay Sabik, PhD
Associate Professor

Title:

Policies to Inform Safe and Equitable Opioid Access for Patients with Advanced Cancer Near the End of Life

Sponsor:

Agency for Healthcare Research and Quality



Marian Jarlenski, PhD, MPH
Associate Professor

Title: Implementing Doula Care in Medicaid to Advance Racial Equality in Severe Maternal Morbidity

Sponsor:

Patient-Centered Outcomes Research Institute

Title: The Effects of Medicaid Policy Interventions on Racial Equity in Severe Maternal Morbidity

Sponsor:

National Institute of Nursing Research

*Note: Dr. Jarlenski is coprincipal investigator with Dara Mendez, PhD, MPH, associate professor of epidemiology, Pitt Public Health.



Coleman Drake, PhD
Assistant Professor

Title:

Developing Low-Cost State Policies to Help Uninsured and Underinsured People Gain Quality Marketplace Coverage

Sponsor:

The Commonwealth Fund

Select Publications

The Department of Health Policy and Management prides itself on the research conducted by our faculty, staff and students. Their hard work is reflected in the number of publications credited to the department across a spectrum of research areas that have influenced decisions and policy at the local, state and federal levels of government in the past year.

Donohue, Cole, James, Jarlenski, Michener and Roberts, E. (2022). The U.S. Medicaid Program: Coverage, Financing, Reforms and Implications for Health Equity. *JAMA*

Ellison, Kumar, Steingrimsson, Adhikari, Charlesworth, McConnell, Trivedi, Trikalinos, Forbes and Panagiotou (2022). Comparison of Low-Value Care Among Commercial and Medicaid Enrollees. *Journal of General Internal Medicine*

Cole, Hollander, Ennis, Donohue, James and Roberts (2022). Do Medicaid Expenditures Increase After Adults Exit Permanent Supportive Housing? *Housing Policy Debate*

Roberts, E. and Mellor (2022). Differences in Care Between Special Needs Plans and Other Medicare Coverage for Dual-Eligibles: Study Examines Differences in Care between Special Needs Plans and Other Medicare Coverage for Dual-Eligibles. *Health Affairs*

The MODRN Investigators, **Cole**, Allen, Austin, Barnes, Chang, Clark, Crane, Cunningham, Fry and Gordon (2022). Outpatient Follow-Up and Use of Medications for Opioid Use Disorder After Residential Treatment Among Medicaid Enrollees in 10 States. *Drug and Alcohol Dependence*

Roberts, E., Mellor, McInerney, and **Sabik** (2023). Effects of a Medicaid dental coverage “cliff” on dental care access among low-income Medicare beneficiaries. *Health Services Research*, 58(3), 589-598.

Roberts, E., Kwon, Hames, McWilliams, Ayanian, & Tipirneni (2023). Racial and Ethnic Disparities in Health Care Use and Access Associated With Loss of Medicaid Supplemental Insurance Eligibility Above the Federal Poverty Level. *JAMA Internal Medicine*, 183(6), 534-543.

Ahrens, **Sharbaugh, Jarlenski**, Tang, Allen, Austin, ... and **Donohue** (2023). Prevalence of Testing for HIV, HBV, and HCV Among Medicaid Enrollees Treated with Medications for Opioid Use Disorder in 11 States, 2016-2019. *Clinical Infectious Diseases*; ciac981-ci-ac981.

Eom, Rothenberger, **Jarlenski**, Schoen, **Cole**, and **Sabik** (2023). Enrollee Characteristics and Receipt of Colorectal Cancer Testing in Pennsylvania After Adoption of the Affordable Care Act Medicaid Expansion. *Cancer Medicine*.

Candon, Xue, Shen, **Cole, Donohue** and Rothbard (2022). The Impact of Ppoid Prescribing Report Cards in Medicaid. *Journal of Managed Care & Specialty Pharmacy*

Hulse, **Hershey**, Parker, Kuza, Fedro-Byrom and Gellad (n.d.). Overdose Risk Prediction Algorithms: The Need For A Comprehensive Legal Framework. *Health Affairs Forefront*.

Savitz, Williams, and Swayze (2022). Identifying High-Need, High-Cost Patients: A Real-World Perspective. *Annals of Internal Medicine*.

Shih, **Sabik**, Stout, Halpern, Lipscomb, Ramsey and Ritzwoller (2022). Health Economics Research in Cancer Screening: Research Opportunities, Challenges, and Future Directions. *JNCI Monographs*

Vinekar, **Jarlenski**, Meyn, Chen, Achilles, Tyberg and Borrero (2022). Early Pregnancy Confirmation Availability at Crisis Pregnancy Centers and Abortion Facilities in the United States. *Contraception*.

Brown-Podgorski (2022). Equitable Policy Lever?: State Minimum Wage Increases and Black-White Disparities in Hypertension. *Circulation*

Macha, Abouk and **Drake** (2022). Association of Recreational Cannabis Legalization with Alcohol Use Among Adults in the U.S., 2010 to 2019. In *JAMA Health Forum*.

Bishop and **Degenholtz** (2022). Evidence Base for the Future of Nursing Homes. *Innovation in Aging*, 6(4),

Jarlenski, Shroff, Terplan, Roberts, **Brown-Podgorski**, and Krans, (2023). Association of Race With Urine Toxicology Testing Among Pregnant Patients During Labor and Delivery. In *JAMA Health Forum* (Vol. 4, No. 4, pp. e230441-e230441). American Medical Association.

Krauland, Zimmerman, Williams, Raviotta, Harrison, Williams, and **Roberts, M.** (2023). Agent-Based Model of the Impact of Higher Influenza Vaccine Efficacy on Seasonal Influenza Burden. *Vaccine: X*, 13, 100249.

Bohnhoff, Xue, Hollander, Burgette, **Cole**, Ray, **Donohue and Roberts, E.** (2023). Healthcare Utilization Among Children Receiving Permanent Supportive Housing. *Pediatrics*, 151(4), p.e2022059833.

Kraschnewski, Kong, **Bryce**, Francis, Poger, Lehman, & Yeh (2023). Intensive Behavioral Therapy for Weight Loss in Patients with, or At-Risk of, Type 2 Diabetes: Results from the PaTH to Health Diabetes Study. *Preventive Medicine Reports*, 31, 102099.

Williams, **Krauland**, Harrison, Williams, **Roberts, M.**, and Zimmerman (2022). Can a Two-Dose Influenza Vaccine Regimen Better Protect Older Adults? An Agent-Based Modeling Study. *Vaccines*, 10(11), 1799.

Savitz, S., Scott, Leo, Keast, and **Savitz, L.** (2023). Identifying Appropriate Comparison Groups for Health System Interventions in the COVID-19 Era. *Learning Health Systems*, 7(2), e10344.

Zhu, Meiselbach, **Drake**, and Polsky (2023). Psychiatrist Networks In Medicare Advantage Plans Are Substantially Narrower Than In Medicaid And ACA Markets: Study Examines Psychiatrist Networks in Medicare Advantage Compared with Medicaid and ACA Markets. *Health Affairs*, 42(7), 909-918.

Brown-Podgorski, Doran-Brubaker and Vohra-Gupta, (2023). State Minimum Wage Increases As a Potential Policy Lever to Reduce Black-White Disparities in Hypertension. *Health Equity*, 7(1), 280-289.

Broom, Qu, O'Connor, Lemak, and Borkowski (2023). Diversity and Inclusion In CAHME-Accredited Graduate Healthcare Management Programs. *Journal of Health Administration Education*, 39(3), 377-394.

Van Cleve, **Cole**, and **Degenholtz** (2023). Risk of Hospitalization Associated with Different Constellations of Home and Community-Based Services. *BMC Geriatrics*, 23(1), 1-8.

Metz, Allshouse, McMillin, Silver, Smid, Haas and **Jarlenski** (2022). Association of Cannabis Use With Nausea and Vomiting of Pregnancy. *Obstetrics & Gynecology*, 140(2), 266-270.

Meet Our Students

Mia-Ann Spadafora (MHA '23)



An Indiana, Pennsylvania native, **Mia-Ann Spadafora** knew she wanted to pursue a career in

health care as an undergraduate at High Point University in North Carolina.

"I fell in love with the industry after taking a couple classes and knew that this was it, and there was no turning back."

In January 2022, she seized an opportunity when she was offered a residency in the ambulatory department at UPMC Children's Hospital under Michelle Capan, the hospital's Senior Director of Ambulatory Services.

"She has been an amazing

mentor and an amazing leader," Spadafora said. "I have learned more than I could have ever imagined. That experience helped me narrow down what I wanted to do."

After a successful residency, Spadafora doesn't have to travel far for her first job after graduation, accepting a position as a patient access manager with the ambulatory department.

As she begins the next stage of her career, Spadafora says the long days and hours have been worth it, especially to be able to provide for a community she grew up in. "Being able to see the impact [the work] has, and see it reach as far as Indiana PA, where I'm from, has been wonderful."

Lysia Gehris (MPH '23)



When someone says they've had an interest in a subject their entire life, most of

the time it's hyperbole, but for **Lysia Gehris** her involvement in public health started at an early age.

"My mom worked in health care communications when I was growing up," she said. "On weekends when she had community events, we just tagged along, and that was my first exposure to health communications."

After moving during high school, Gehris says her passion for public health grew when her new neighbor, a professor of public health at Lock Haven University, took

her under wing. As a graduate student, she has taken a path less traveled by MPH students, opting to complete a residency and accepting a fellowship after graduation. She says her residency with the Center for Social Impact at the UPMC Health Plan exposed her to new opportunities she hadn't thought possible.

"We get to leverage different community benefit dollars throughout the different products, to create programs around food housing and workforce development," she said.

Once thinking she would focus on mental health and opioid use, Gehris says seeing issues apart from the medical ones caused by the pandemic led her to broaden the scope of her work.

Paige Borst (MHA '23)



Paige Borst joined Health Policy and Management in fall 2021 knowing she wanted to serve the

community she grew up in.

"I am from [Pittsburgh], my family's here, and this is where I want to be long term," she said.

Health care has always been top of mind for Borst, who volunteered in hospitals and studied health policy and administration at Penn State as an undergraduate.

"That's why I chose to go the MHA route, there are so many options and so many diverse career opportunities that can come from getting that degree."

It's not just the knowledge gained in the classroom that Borst says has helped her succeed, but the lessons that she's learned about herself. "I think

I'm a totally different person from in my first year," she said. "Coming in, I thought I was going to do one thing, but an opportunity presented itself and I'm so thankful I followed it."

After graduating in April, Borst took the next step, accepting an administrative fellowship with UPMC Insurance Services Division. She said, "I am very excited knowing that these next two years of my life are going to be centered around continual learning, specifically within health insurance." She says the transition from resident to fellow will allow her to better understand where she fits within the health care system.

"My goal is to be a well-rounded, respected leader within health care," she said. "I know I want to be someone that other people look up to and I hope to have a positive impact on patients, members and the entire community."

Lynsey Gutzmer (JD/MPH '24)



Every summer the Centers for Disease Control and Prevention (CDC) Public Health Law Program

(PHLP) hosts legal interns.

As a JD/MPH joint-degree student, it seemed too good to be true for **Lynsey Gutzmer** when she was accepted in the summer of 2022.

The PHLP combines law and public health to create tools and materials to assist local, state, tribal and territorial public health officials.

The PHLP conducts vast legal epidemiology studies to track public health laws and regulations across the United States, publishes the "Public Health Law News" guidance and provides legal technical assistance to public health entities all over the country.

"I had the opportunity to work

with brilliant public health law analysts and other members of the PHLP team and get to know my cohort of interns who hailed from all over the United States," said Gutzmer.

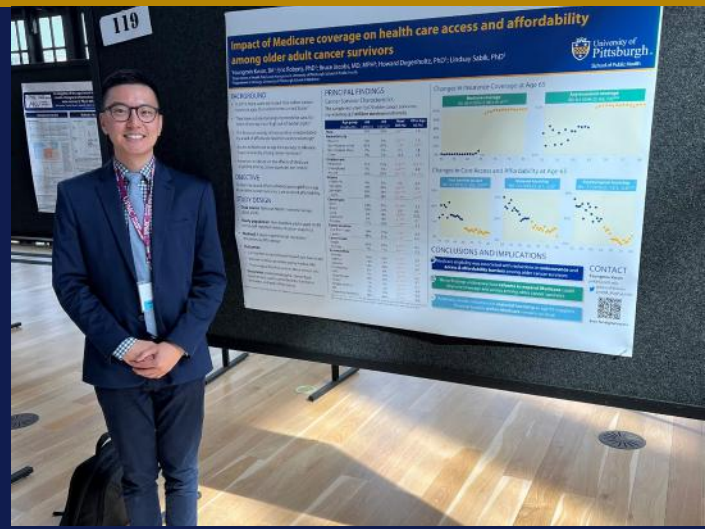
Projects for interns span from researching buprenorphine and telehealth, to medicolegal death investigations and how judicial opinions affect public health. Interns complete a literature review and issue a brief on the topic of their choosing during their time in the program.

Gutzmer says she focused on pregnancy discrimination in the workplace, examining the relevant laws, regulations and case law surrounding the issue.

"The program was truly a special experience and left me feeling hopeful about the future of public health in this country," she said. "I know this internship will continue to help me as I finish my education at Pitt Public Health and Law and begin my career."

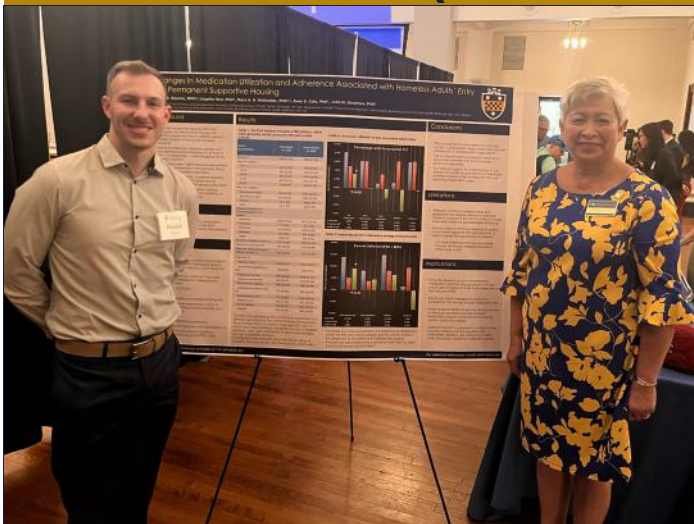
Youngmin Kwon (PhD '24)

Youngmin Kwon (PhD '24) presented at the 2022 UPMC Hillman Cancer Center retreat. His study looked at the impact of Medicare eligibility on older cancer survivors' health care access and affordability. Data show a growing population of older cancer survivors who have ongoing needs for care, which could lead to high out-of-pocket costs. The financial burden of survivorship is exacerbated by a lack of affordable health insurance coverage. The study found Medicare eligibility was associated with improved health care access and affordability among older cancer survivors. The findings highlight how such Medicare reforms could alleviate financial burdens among older adults vulnerable to high costs of survivorship care.



Youngmin Kwon presents a poster at the annual UPMC Hillman Cancer Center retreat.

Donald Bourne (MD/PhD '27)



Donald Bourne (left) with Dr. Maureen Litchveld, the Dean of the School of Public Health at Health Sciences Alumni Weekend

Donald Bourne, (MD/PhD '27) presented at Health Sciences Alumni weekend in September 2022. His poster "Changes in Medication Utilization and Adherence Associated with Homeless Adults' Entry into Permanent Supportive Housing," displayed his School of Public Health Dean's Day 2022 Diversity, Equity and Inclusion award-winning research into permanent supportive housing (PSH), an intervention that combines affordable housing with voluntary support services to address chronic homelessness.

Bourne also presented research at the 2023 Dean's Day competition and at AcademyHealth's Annual Research Meeting in Seattle, where his poster "Pennsylvania Rural Health Model: Early Impacts on Potentially Avoidable Hospitalizations," was nominated for best student poster.

Haley Director (PhD '27)

Haley Director (PhD '27) presented at Health Sciences Alumni weekend's poster presentation. Her presentation focused on research from her Masters' essay that earned third place in the master's category at the School of Public Health's 2022 Dean's Day competition. The study looked at gaps in knowledge and testing for hereditary breast and ovarian cancer and hereditary colorectal cancers. Research found variants in some genes likely to cause those cancers, however there are also gaps in insurance coverage for people of different races and ethnicities. Results showed race- and ethnicity-based insurance coverage gaps exist for genetic testing for cancer, showing the importance of developing interventions to increase knowledge of and access to genetic testing for minoritized racial and ethnic groups.



Haley Director (right) with SPH Dean Dr. Maureen Litchveld at Health Sciences Alumni Weekend

A Letter from the MHA Program Director



Greetings to all from main campus! The MHA program had another busy and very successful year, and I'm delighted to update you. I'm also proud to continue serving in this role helping young professionals launch their careers in the field of health administration.

The big news from this past year was our continued rise in the U.S. News & World Report rankings. We rose to #14 in the U.S., up three spots from the last round of rankings. The new rankings show that we sustained our positive momentum through the adverse impacts of the pandemic. The results move us back into the upper tier of graduate programs within the field of health care management. We are excited about the future of the MHA program and will continue looking for ways to improve the student experience and enhance the program's national reputation.

Two primary means of

assessing the quality of the program are our graduation and our placement rates.

We sustained our graduation rate at 100%. Our placement rate was once again at 100%, too. Our newest alumni took positions from New York City to Florida to Texas, and many points in between. Around half remained in the Pittsburgh area, while the others helped spread the Pitt brand around the country. Many graduates transitioned into full-time roles well prior to graduation, and six secured nationally competitive administrative fellowships with UPMC, Jefferson Health, Maimonides Medical Center, Hospital Sisters Health System (HSHS), Penn Medicine, and Atrium Health.

Our students continued finding success in case competitions throughout the year. The highlight was our team winning the University of Scranton Healthcare Leaders for Social Justice Case Competition. This competition was sponsored by Geisinger and was centered on an initiative they were considering in northeastern Pennsylvania. The executive from Geisinger complimented our students by letting them know that their solution, which they developed within a week, includ-

ed the same recommendations that their full-time team developed over a six-month period. The students were excited to hear the feedback. We also had teams admirably compete in case competitions at the University of Alabama at Birmingham, Baylor and Ohio State Universities, the National Association of Health Services Executives and the Cleveland Clinic.

Last, but certainly not least, I want to tell everyone about our experience at the 2023 ACHE Congress in Chicago. Through a mix of support from our alumni, our department leadership, and our student association (the Health Policy and Management Association), we were able to secure funding to provide substantial assistance to help get students to the conference. We had a record turnout of 19 students who attended, including 10 who served as program assistants. We were able to provide transportation for 13 students, with Mike Friend and I driving 12-passenger vans across the Rust Belt. We placed most of our students into hotel rooms near the conference and a few other students stayed with our wonderful alumna Diane Howard! We also helped offset the

registration costs for those students who were not serving as Program Assistants. The large presence of Pitt students greatly increased our visibility during the conference, and many competing programs mentioned the significant number of Pitt MHA students who attended. It was a great success, and the students are already planning to do even better in 2024.

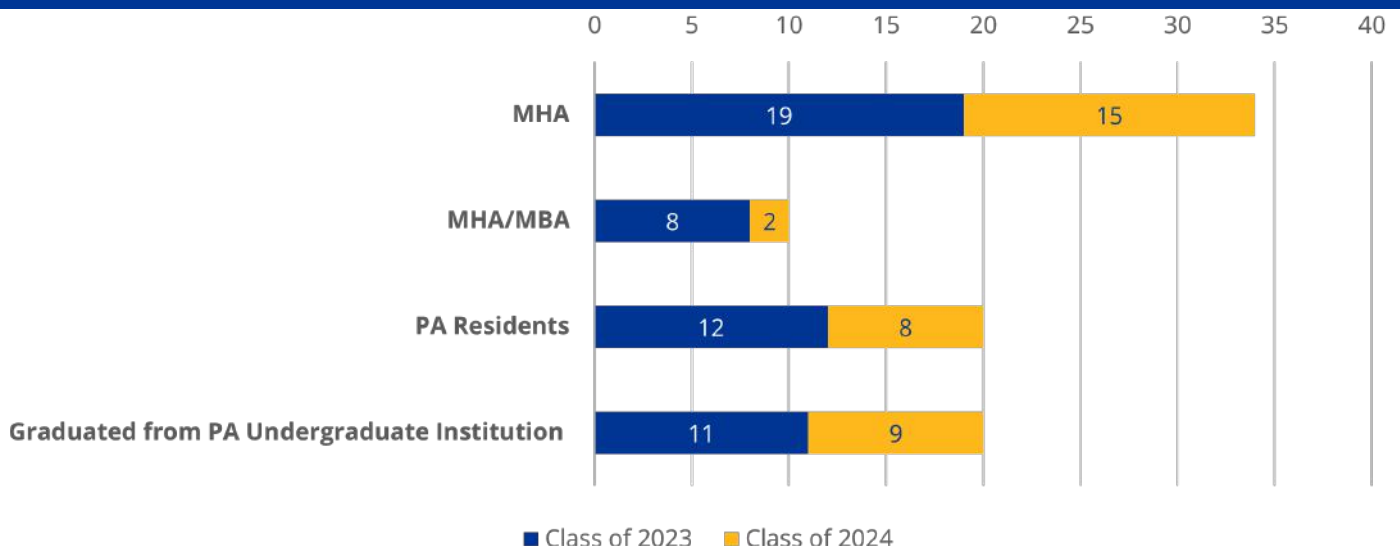
This was just a brief summary of the past year. We're looking forward to continuing all the great work back here at main campus. If you'd like to get involved, please let me know and we'll find something that works well for you. We always like integrating our great alumni into the MHA program, and our students very much enjoy meeting our wonderful alumni.

Kevin D. Broom, PhD

Associate Professor and Vice Chair for Education, Health Policy and Management

Director, MHA and MHA/MBA Programs

Classes of 2023 and 2024



About the MHA Program

Master of Health Administration Ranked #14 by U.S. News and World Report

The Master of Health Administration (MHA) program offers students a competency-based curriculum and an array of professional development resources and activities to prepare graduates for managerial roles in health care systems and networks, managed care, health insurance and long-term care organizations. The broad curriculum provides students with a foundation of knowledge, analytical and communication skills, and core values for ongoing career growth and professional and leadership development. Upon completion of the MHA program, our graduates obtain post-graduate fellowships or full-time employment in hospitals, academic medical centers, physician practices, long-term care facilities, health plans and consulting firms.

Class of 2023 Placements

Title	Employer	Location
Project Analyst	UPMC Hillman Cancer Center	Pittsburgh, PA
Administrative Fellow	UPMC Health Plan	Pittsburgh, PA
Administrative Fellow	Jefferson Health	Voorhees, NJ
Business/Sales Manager	Greater Pittsburgh Vascular Associates	Pittsburgh, PA
Project Specialist	BlueBin, Inc.	Houston, TX
Administrative Fellow	Maimonides Medical Center	Brooklyn, NY
Associate Strategy Analyst	Highmark Health	Pittsburgh, PA
Compliance and Privacy Program Manager	University of Maryland Medical System	Baltimore, MD
Rotational Business Professional	NextEra Energy	Juno Beach, FL
Quality Coordinator	Allegheny Health Network	Pittsburgh, PA
Administrative Fellow	Hospital Sisters Health System (HSBS)	Springfield, IL
Program Coordinator	Houston Plastic Surgery Center	Houston, TX
Project Manager	Department of Medicine - Pitt School of Medicine	Pittsburgh, PA
Practice Coordinator	UPMC Department of Endocrinology	Pittsburgh, PA
Administrative Fellow	Penn Medicine	Philadelphia, PA
Revenue Cycle Coordinator	Revenue Cycle Solutions	Pittsburgh, PA
Supervisor of Nursing Administrative Support	NYU Langone Health	New York, NY
Manager of Special Projects	Gateway Rehabilitation	Pittsburgh, PA
Client Recruiter	CMM Global	Pittsburgh, PA
Administrative Supervisor	UPMC Asbury Heights	Pittsburgh, PA
Manager-Patient Access	UPMC Children's Hospital of Pittsburgh	Pittsburgh, PA
Project Manager	Department of Medicine - Pitt School of Medicine	Pittsburgh, PA
Administrative Fellow	Atrium Health Wake Forest Baptist	Winston-Salem, NC
Strategy Consultant, Medicare & Special Needs Plan Product Innovation	UPMC Health Plan	Pittsburgh, PA
Practice Manager	Digestive Disorders Center and Center for Liver Disease-UPMC	Pittsburgh, PA

A Letter from the MPH Program Director



Hello to our HPM community and friends!

Well, this is rather exciting – the return of our annual report!

Having completed my second year as director of the MPH program in Health Policy and Management and codirector for the JD/MPH program, there is quite a bit of news to share.

First and foremost, the MPH program is growing! Our incoming cohort for Fall 2023 includes 18 matriculating students, from Pennsylvania and beyond. Some students are joining us immediately after college, while others have several years of work experience behind them.

With growth in both numbers and diversity of backgrounds, HPM is taking on several key initiatives, including development of new elective

courses and expansion of practicum placements in the community, both aimed at professional development and preparation for successful careers after graduation.

This year, for the first time, the U.S. News & World Report rankings of top graduate programs identified public health programs according to academic discipline. We landed in the #16 spot for graduate programs in Health Policy & Management. It's a wonderful starting point, of course, and aspirations to improve our ranking reinforce the same message – to grow our numbers, increase our diversity, develop new and timely courses and expand practicum opportunities for our students.

Besides this “inward focus” at the department level, HPM is also busy assisting the Dean's Office with preparations for the school's re-accreditation with the Council for Education in Public Health (CEPH). The work extends to every department and all 17 MPH degree programs, including

both programs in HPM.

Every department gathers data and completes assessments to demonstrate that every MPH graduate fulfills 22 “foundational competencies” vis-à-vis the core curriculum. On top of that, each MPH program must differentiate itself from the other 16 programs, primarily with advanced coursework that satisfies six additional, discipline-specific competencies. We made several adjustments in the curricula and view this as a critical step to ensuring that HPM's curriculum remains current and relevant for years to come.

Lastly, as program director, one of my key responsibilities is introducing MPH students to a variety of career paths – not only to raise awareness about public health opportunities broadly, but also to help students appreciate the skills that set them apart from 16 other flavors of the MPH degree. To highlight the strengths of Health Policy and Management, I organize panel discus-

sions with public health professionals working in different sectors, many of whom are HPM alumni, friends and partners.

If this type of engagement with students sounds interesting, let's chat! Feel free to contact me at bryce99@pitt.edu.

Many thanks,

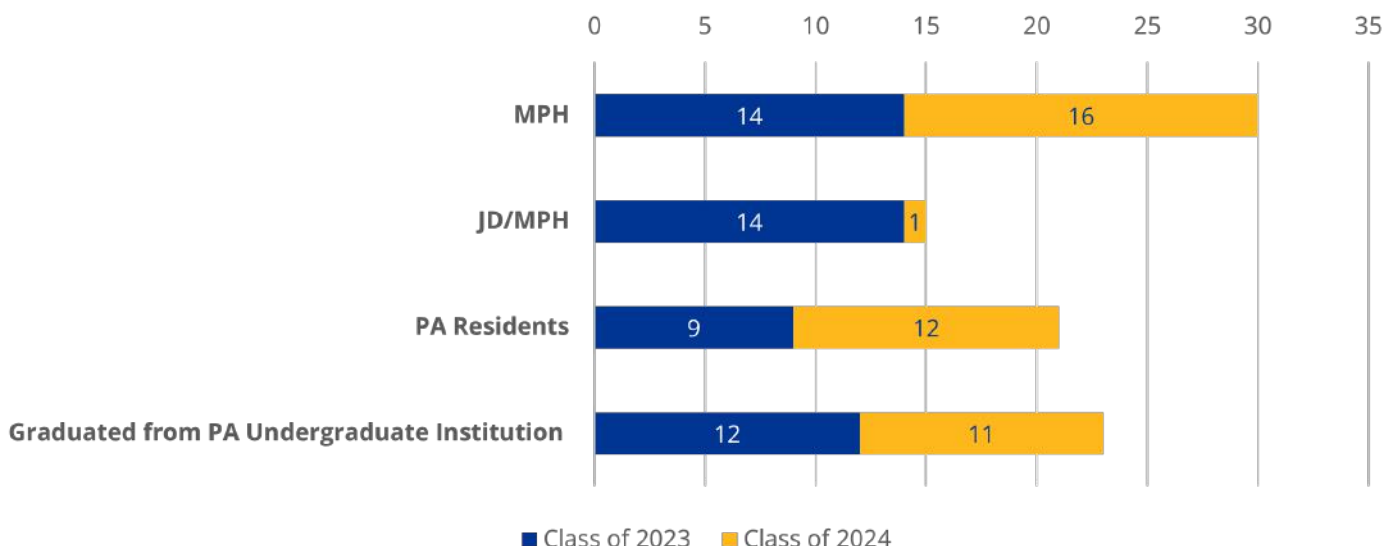
Cindy L. Bryce, PhD

Associate Professor,
Health Policy and Management

Associate Dean for Enrollment,
Pitt Public Health

Director,
MPH and JD/MPH Programs

Classes of 2023 and 2024



About the MPH Program

The MPH program prepares students for careers as public policy analysts, advocates for public health and high quality care and professionals engaged in the development and implementation of health policies. The program provides professional development through a combination of coursework, a health policy- or management related practicum, a public health leader-in-residence and other curricular activities. Graduates of our MPH program should be well prepared to pass the Certification in Public Health exam, pursue related doctoral studies and/or obtain professional employment in public health and related sectors.

**MPH in Health
Policy and
Management
Ranked
#16
by U.S. News
and World
Report**

Class of 2023 Placements

Title	Employer	Location
Program Specialist	Jewish Healthcare Foundation	Pittsburgh, PA
Administrative Fellow	UPMC	Pittsburgh, PA
Health Policy Analyst	West Virginia Governor's Council for Substance Abuse	Huntington, WV
Health Educator	Adagio Health	Pittsburgh, PA
Research Assistant	Fox Chase Cancer Center (Temple Health)	Philadelphia, PA
Research Assistant	UPMC	Pittsburgh, PA
Instructor	Elevation High School	Sanford, FL
Government and Public Services Business Technology Solutions Analyst	Deloitte Consulting LLP	Arlington, VA
Public Health Administrator	Allegheny County Health Department	Pittsburgh, PA
William E. Lower Health Policy Fellow	Academy of Medicine of Cleveland and Northern Ohio	Cleveland, OH
Research and Administrative Manager	Center for Innovative Research on Gender Health Equity (CONVERGE) - University of Pittsburgh	Pittsburgh, PA

A Letter from the PhD Program Director



Dear HPM Friends and Colleagues,
The Health Services Research and Policy (HSRP) PhD Program in HPM aims to give students the experience and skills to contribute to health policy development and to the improvement of public health through innovative and rigorous research. As I begin my fourth year as Program Director (and eighth year as faculty in HPM), my excitement about our fantastic doctoral students, the innovative research they are conducting and the impactful work of our PhD alumni only continues to grow.

The HSRP PhD Program, established 15 years ago, has trained a growing pool of students and alumni who lead timely, policy relevant research that informs state and federal policymakers, program officials, health systems and other stakeholders across the country

and internationally.

Our outstanding students regularly present their independent research at national and international conferences, publish in top journals and successfully compete for research grants to support their dissertation work. To give just a few examples from this past year, HPM doctoral students have presented their research at a number of high-profile national and international conferences, including six student presentations at the AcademyHealth Annual Research Meeting (four chosen for highly competitive podium presentations), in addition to student presentations at the American Society of Health Economists Annual Meeting (ASHEcon), the International Conference on Pharmacoepidemiology (ICPE) and state and local conferences. Fourth-year student Katherine Callaway Kim presented her research at ICPE, where she was recognized for the best student abstract in drug utilization research. The recognition of HSRP student research at national and international meetings speaks to the relevance and caliber of the

studies they lead.

HSRP students work closely with faculty on team-based projects, leading and contributing to publications in peer-reviewed journals focused on policy, medicine, economics and other relevant areas. This past year, students have authored papers published in well-recognized journals, including JAMA Internal Medicine, Journal of General Internal Medicine, Journal of Health Economics, Journal of Addiction Medicine, and Pharmacoepidemiology and Drug Safety, among others. In addition, a growing number of students have applied for federal dissertation grants and HSRP students have been incredibly competitive in this selective process. Fifth-year student Youngmin Kwon was recently awarded an R36 grant from the Agency for Healthcare Research and Quality for his dissertation research on access to care for older cancer survivors.

Our alumni continue to build on the strong foundations they develop while at Pitt and apply their skills in a range of settings to inform health policy and practice. Recent

HSRP PhD graduates are working across academia, government and industry, with placements including faculty in the Public Health Dynamics Laboratory in Pitt Public Health, postdoctoral fellow in health economics at Indiana University, Social Science Research Analyst in the federal Center for Medicare and Medicaid Innovation, and mental health and substance use researcher with the Massachusetts Center for Health Information and Analysis.

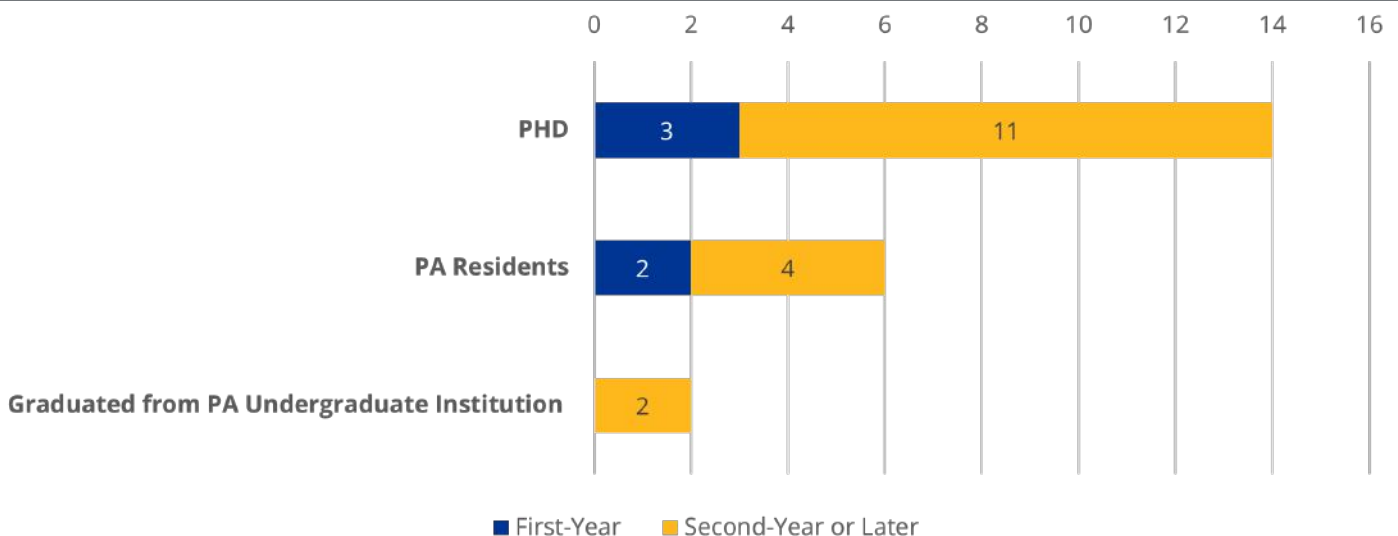
We are so proud of the many accomplishments of our students and alumni over the past year and look forward to supporting their continued contributions to evidence-based research in the months and years to come.

Best,

Lindsay M. Sabik, PhD

Associate Professor and Vice Chair for Research, Health Policy and Management Director, PhD and MS Programs

PhD Student Snapshot



About the PhD Program

The Health Services Research and Policy PhD program meets an ongoing need for public health researchers who focus on cost, access and quality of the health care system. Graduates will be prepared to conduct research on policy issues affecting the organization, financing, and delivery of health care and public health services. Our graduates are able to describe salient institutional features of the U.S. health care system and theoretical frameworks for studying health care delivery and policy; Formulate policy-relevant research questions and design original research based on foundational knowledge of the U.S. health care system theory; Design original empirical research, applying methods from econometrics and quasi-experimental design to address an applied problem in the delivery, financing or quality of health care; Communicate research findings both verbally and in writing to inform policy; Lead applied health services and policy research studies that draw on multidisciplinary expertise to expand the field of knowledge

Class of 2023 Placements

Title	Employer	Location
Postdoctoral Fellow	O'Neill School of Public and Environmental Affairs at Indiana University	Bloomington, IN
Social Science Research Analyst	Center for Medicare and Medicaid Innovation	Baltimore, MD
Researcher	The Center for Health Information and Analysis	Boston, MA
Research Associate	JBS International	Remote

Select Publications from HPM PhD Candidates

Cai, Anderson, **Drake** and Abraham, (2022). Association Between Provider-Sponsored Health Plan Ownership and Health Insurance Marketplace Plan Quality. *Journal of General Internal Medicine*, 37(14), 3603-3610.

Glynn, Hernandez, and **Roberts, E.** (2022). Consequences of Forgoing Prescription Drug Subsidies Among Low-Income Medicare Beneficiaries with Diabetes. *Health Services Research*, 57(5), 1136-1144.

Hames and **Roberts, E.** (2022). Entering Medicare Advantage from Employer-Sponsored Plans: Change in Out-of-Pocket Costs And Utilization at Age 65. *Innovation in Aging*, 6(Suppl 1), 802.

Luo, Feldman, **Kim**, Rothenberger, Korytkowski, Hernandez, and Gellad (2023). Evaluation of Out-of-Pocket Costs and Treatment Intensification With an SGLT2 Inhibitor or GLP-1 RA in Patients With Type 2 Diabetes and Cardiovascular Disease. *JAMA Network Open*, 6(6), e2317886-e2317886.

Eaton, **Lewis**, Donovan, Davis, Butcher, Alexander and Seaman (2023). Examining the Needs of Survivors of Critical Illness Through the Lens of Palliative Care: A Qualitative Study of Survivor Experiences. *Intensive and Critical Care Nursing*, 75, 103362.

Gao, **Drake**, Krans, Chen, and **Jarlenski**, (2022). Explaining Racial-Ethnic Disparities in the Receipt of Medication for Opioid Use Disorder During Pregnancy. *Journal of Addiction Medicine*, 16(6), e356-e365.

Drake, Anderson, **Cai**, and Sacks (2023). Financial Transaction Costs Reduce Benefit Take-Up Evidence From Zero-Premium Health Insurance Plans in Colorado. *Journal of Health Economics*, 89, 102752.

Encinosa, Lane and **Cornelio** (2022). How State Surprise Billing Protections Increased ED Visits, 2007-2018: Potential Implications for the No Surprises Act. *American Journal of Managed Care*, 28(9).

Gunning, Chu, Nakhla, **Kim**, Suda, and Tadrous (2023). Major Shifts in Acid Suppression Drug Utilization After the 2019 Ranitidine Recalls in Canada and United States. *Digestive Diseases and Sciences*, 1-9.

Note: Bolded names indicate HPM faculty, staff or students

A Letter from the Vice Chair for Education



Greetings again from main campus. We are excited to update you on the newest edition to the School of Public Health's academic offerings, the Bachelor of Science in Public Health (BSPH). This update really serves as more of an introduction to the program, given that many of you may not yet be aware of this exciting new degree offering from our school and the department.

The BSPH program is an SPH-wide academic offering that was officially approved a couple of years ago after Dean Lichtveld arrived to lead us here at Pitt Public Health. In this program, all BSPH students will take three tiers

of courses that make up the Public Health major. Tier I courses provide basic public health foundational knowledge, such as Public Health Biology and Health Equity. Tier II courses build upon this foundation by exposing students to the core areas of public health: Community-Based Approaches to Public Health, Biostatistics, Epidemiology, Environmental Health Sciences, and Health Policy and Management.

Tier III courses afford students the opportunity to pursue a predefined topical cluster (e.g. Global Health, Climate and Health, etc.), or they can develop their own topical clusters based on their areas of interest. The Department of Health Policy and Management will offer a cluster area for any students who are interested in pursuing jobs and/or graduate education in the domains

of health policy or health management.

When the program initially started, the BSPH only had a few dozen students. The program has now grown to more than 200 students across all departments. As the program fully matures, the long-term goal is to recruit 200 new students each year, with an overall enrollment of 800 students across all four years.

As the current students age into the upper-level classes, we will also look to build service-learning opportunities and integrative experiences that afford students the opportunity to apply what they are learning in real-world settings. We expect many of these students to subsequently pursue graduate school within the broader domain of public health, or to use the BSPH program to prepare them for professional programs

where they can pursue careers as clinicians.

The BSPH program will be exciting to watch as it fully matures into yet another outstanding academic offering within the SPH.

Thanks,

Kevin D. Broom, PhD

Associate Professor and Vice Chair for Education, Health Policy and Management

Director, MHA and MHA/MBA Programs

About the BSPH Program

Pitt Public Health has a history of preparing generations of leaders to meet the needs of our communities. While the COVID-19 pandemic placed public health in the global spotlight, it also unearthed a growing need for strong, passionate students who not only choose to pursue a rewarding education, but a career in which they can address the challenges of tomorrow and protect the health of millions. The Bachelor of Science in Public Health is a four-year degree program that provides students with a foundation in the key disciplines of public health alongside active learning activities. Students will learn about today's most pressing public health topics, including climate change, data science, health equity and the role of technology and innovation in health promotion. Through its unique service-learning component, students will directly engage with populations and observe how coursework translates into real-world settings.

Classes of 2026 and 2027



An aerial photograph of Pittsburgh, Pennsylvania, showing a mix of modern skyscrapers and older buildings, with a dense canopy of green trees in the foreground. The image is overlaid with a semi-transparent blue filter. The text is positioned on the left side of the image.

Health Policy and Management Department Updates



Impact on the Workforce: The 2022 Dawn Gideon Symposium

It's something we've all heard as we begin to emerge from the toughest part of the COVID-19 pandemic, "the new normal," but there are still many questions about what it means and what it looks like.

Something else that has emerged from the pandemic is a renewed focus on issues like work-life balance and the burnout many in the health care industry and elsewhere were forced to deal with as businesses drastically changed operations or shut down entirely.

The 2022 Dawn Gideon Symposium focused on the changes in the workforce caused by

to working with poor and struggling health care providers to find creative solutions for their success. The foundation also provides scholarships for graduate students, organizational internships and education development and research.

This year's event focused on the challenges faced and lessons learned during the pandemic.

"I know everyone has heard that COVID is over; [our panel] will tell you it is not and the impacts of it are not," said symposium moderator Martin Raniowski, executive vice president and CEO of the Pennsylvania Medical Society.

Panelists for the sympo-



L-R: Martin Raniowski, HPM professor and chair Dr. Julie Donohue, Ritu Thamman, Kevin Altomari, Buffy Kelly, Kimberley Finnerty

The experts say the pandemic isn't the main reason for some shortages, but a culmination of other issues like declining enrollment in health care

programs for decades and an aging workforce.

"When it comes to the workforce, it's not a surprise that we're seeing shortages right now, and it has little to do

with COVID," said Kelly. "When I got my degree, experts predicted shortages of people we would have just in laboratories, let alone nursing and others sectors -- and what

we're seeing now is it all coming to a head."

As we begin to settle into the so-called new normal, the panel says there are positives that have come from the pandemic too: a renewed focus on mental health and a wider availability and accessibility to health care through means like telemedicine have helped better inform and care for the population.

With the changes also come challenges. Policies that were lifted to expedite clearances or allow for greater access have now gone back into place, for example. However, the panel says there are precautions that need to be taken to ensure proper training and quality of care, adding very little can be done to address shortages until policy makers act.



Attendees pack the University Club's Ballroom B for the Dawn Gideon Symposium

the pandemic and what adjustments employers can make to keep their best employees on staff. Held annually in cooperation with the HPM Alumni Association, the symposium focuses on a topic selected by our alumni, students, faculty and members of the local health industry and serves as a major continuing education opportunity.

The event is supported by the Dawn Gideon Foundation. Founded in 2015 in memory of Dawn M. Gideon, a Pitt MPH alumna who dedicated herself

to working with poor and struggling health care providers to find creative solutions for their success. The foundation also provides scholarships for graduate students, organizational internships and education development and research. Ritu Thamman, an assistant clinical professor of medicine at the Pitt School of Medicine, who authored a book on preventing burnout in medicine, Kimberley Finnerty, Vice President of Workforce Planning, Financial Operations for the Allegheny Health Network and Buffy Kelly, Managing Director of the Huron Consulting Group, all say they've seen and have been forced to deal with the impacts of the pandemic first hand.



About Dawn Gideon

A proud graduate of Pitt's hospital administration program, Dawn Gideon built an extraordinarily successful career as a visionary leader in health care—one that was, sadly, far too brief.

Her life and career continues to inspire her friends, family and the annual symposium named in her honor.

Learn more about the Dawn Gideon Foundation at: dawnideonfoundation.org

Department Updates

Meet HPM's 2022-23 Dawn Gideon Scholars

The Dawn Gideon Foundation provides scholarships to students pursuing a master's degree in health care administration. Recipients selected by the foundation are those who embody the skills, imagination, commitment and compassion for which Dawn Gideon is remembered.



Emily Maurer (MHA/MBA, '25) graduated from Duquesne University with a bachelor's degree in health administration and minors in public health and marketing. As an undergraduate, Maurer interned at West Penn Hospital supporting and helping patients in the Hospital Elder Life Program. She has also been an administrative intern at the Sharon Regional Health System working with several departments. Maurer says her experiences have inspired her to focus on improving care standards and advocating for patients.



Natasha Shah (MHA '24) graduated from the University of Maryland-College Park with a degree in community health. As an undergraduate she found interest at the intersection of public health and health policy. She says being a Gideon scholar allowed her leave a full-time job in Washington, D.C. and relocate to Pittsburgh to join the MHA program. "I have always been interested in helping communities that are underserved and being an advocate for those who don't have a voice in maintaining their health," said Shah. "The Dawn Gideon Scholarship has empowered me to do just that." She says the scholarship has allowed her to connect with like-minded female scholars who are going to make an impact in the health care field in a range of cities around the country.

HPM Students Compete in 2023 Pitt Public Health Dean's Day Poster Contest, Two Win Awards

Dean's Day is Pitt Public Health's annual showcase where students present their work to the multidisciplinary Pitt Public Health community. All currently matriculated students are eligible to submit an abstract. This year several HPM students, including PhD candidates **Donald Bourne**, **Alexandra Hames**, **Anna Lewis** and second-year MPH student **Aparna Ramani** all took part in the three-day event. Lewis and Ramani won the Diversity, Equity and Inclusion Award for the PhD and Master's categories, respectively.



(Clockwise from top left):
-Aparna Ramani (MPH '23) presents her research poster
-PhD candidate Alexandra Hames (right) discusses her findings with Dr. Maureen Lichtveld, Dean of Pitt Public Health
-Dr. Marian Jarlenski (left) judges a poster during the competition

HPM MHA Students Attend 2023 ACHE Congress for Learning, Growth and Networking Opportunities

In March, HPM students attended the annual American College of Health Care Executives (ACHE) Congress in Chicago. The convention was an opportunity for the 19 students (the most ever from the department) to learn more about opportunities in the industry, network with other students, alumni and potential employers and see friends and connections from other universities and organizations. During the conference, the department hosted a reception for alumni from Pitt Public Health and other schools within the University.



(Clockwise from top left):
 -HPM students, faculty and staff prepare for the seven-hour drive to ACHE Congress
 -HPM students Ngozi Ibe (MHA/MBA '24) and Noah Lohman (MHA '24) at the HPM booth
 -ACHE sign welcoming guests to the convention center
 -HPM professor and chair Dr. Julie Donohue updates alumni on the department.
 -Students pose with Dr. Diane Howard (MPH '79) during a dinner in Chicago

Department Updates

HPM Students Bring Home Top Prize at University of Scranton Case Competition

Every year, universities and health care organizations across the country sponsor case competitions. These events of public health students challenge teams to provide a solution to a real-world case. The competitions help prepare students for the industry after graduation by honing their problem-solving, collaboration and presentation skills, among others. In November, an HPM team of **Danielle Nahas** (MHA/MBA '23), **Aparna Ramani** (MPH, '23) and **Natasha Shah** (MHA '24) won first place at the University of Scranton Case Competition sponsored by Geisinger Health System. HPM alumnus **Karl Gibson** (MHA '19) served as coach for the team.



Above (L to R): Natasha Shah, Aparna Ramani and Danielle Nahas present during the University of Scranton Case Competition



Above:
Front Row: Dr. Kevin Broom, Aparna Ramani (MPH '23), Danielle Nahas (MHA/MBA '23) and Natasha Shah (MHA '24)
Back Row: Karl Gibson (MHA '19) at the University of Scranton Case Competition



Right: The winning team is presented their prize at the University of Scranton Case Competition

HPM Students Expand Knowledge, Networking with Health Care Leaders



Executive in Residence
John Harrington

Public Health Leader in Residence
Carolyn Byrnes

To help students expand their professional opportunities and network, each year the department appoints an Executive in Residence (EIR) and a Public Health Leader in Residence (PHLIR) to further expand students' knowledge about the world of practice. Both meet with students collectively and individually throughout the academic year about career development, professionalism and more.

For the 2022-23 academic year, HPM welcomed **John Harrington** as our Executive in Residence. He has more than 40 years of experience in health care, serving 11 hospitals across Arizona. During his career, Harrington served in a variety of roles, including as CEO of seven hospitals. His last permanent assignment was as Senior Vice President/CEO of HonorHealth Deer Valley Medical Center. Shortly after his retirement, he was named interim Chief Administrative Officer of Flagstaff Medical Center, part of Northern Arizona Healthcare, until a successor was named. He earned both his Master of Public Health and his Bachelor of Science in Microbiology from the University of Pittsburgh.

Carolyn Byrnes joined us as the Public Health Leader in Residence. She is the Policy Director at the Jewish Health Foundation (JHF). Before joining JHF, Byrnes was Senior Advisor to the Secretary of Health and Physician General for Pennsylvania, working on a myriad of public health issues, including: improving maternal and child health, addressing health equity issues, and responding to the opioid and COVID-19 pandemics. Byrnes received her Master of Public Health in Epidemiology from the University of Pittsburgh and her Bachelor of Science in Biology from Loyola University, Chicago. She is certified in Public Health by the National Board of Public Health Examiners.



The University of Pittsburgh team consisting of HPM PhD candidates Anna Lewis and Youngmin Kwon and Physical Therapy PhD candidate Aileen Chou in front their award winning project

HPM's Lewis, Kwon, Part of Winning Team at NCHS/AcademyHealth Data Visualization Challenge

PhD candidates **Anna Lewis** and **Youngmin Kwon** took part the NCHS/AcademyHealth Data Visualization Challenge as part of a team from Pitt that also included Physical Therapy PhD candidate Aileen Chou. The competition challenges graduate students to create data visualizations that address social determinants of health using public-use files from the National Center for Health Statistics (NCHS) in combination with non-NCHS public-use data. The Pitt team's project, "Who's Hungry?: Racial Disparities in Food Insecurity for Individuals with Disabilities & Functional Limitations," found adults with a disability were four times as likely to experience food insecurity compared to those without a disability.



L-R: Aileen Chou, Anna Lewis and Youngmin Kwon



HPM Welcomes AHRQ Director Dr. Robert Valdez to 2023 Anne C. Sonis Memorial Lecture

In March, the Department, along with the Wolff Center of UPMC and the UPMC Health Plan, welcomed Dr. Robert Valdez, director of the Agency for Healthcare Research and Quality (AHRQ) as the keynote speaker for the 2023 Anne C. Sonis Memorial Lecture to discuss how the agency is making progress on a U.S. Department of Health and Human Services (HHS) initiative to improve patient and health care workforce safety.

AHRQ is one of four major science agencies within HHS, the others being the National Institutes of Health (NIH), Food and Drug Administration (FDA) and the Centers for Disease Control and Prevention (CDC). As its name implies, AHRQ focuses on health care delivery and improvement, and as Valdez explained, is to health care systems what the CDC is to public health systems.

“Our Congressional mandate is to make high-quality health care available to everyone,” says Dr. Valdez, whose focus as director is to disseminate and implement actionable knowledge generated by the agency and its research affiliates.

Data show that life expectancy in the United States has been on a steady decline for more than a decade, taking a more precipitous decline during the pandemic, leading to more public pressure to improve America’s health care systems.

“When I took on this role, I tried to figure out a way that AHRQ could contribute to something that hasn’t been focused on in a long time,” says Valdez. “We spent a lot of money, but the performance of our health care system has been consistently less than it could be.”

To that end, Valdez and his



HPM welcomed guests from across Pitt and UPMC to the annual lecture

staff have identified three priorities the agency will focus on in the next decade;

- Improving health care system performance by reducing fragmentation and taking lessons learned during the pandemic to spark transformation.
- Expanding access to high quality, affordable health care by responding to “illnesses of despair” like depression and addiction, integrating behavioral and mental health into primary care and improving telehealth.
- Improving health care system resilience, especially during public health crises and natural disasters.

Research produced by AHRQ affiliates shows a decline in adverse events for hospitalized adults in just four conditions (acute myocardial infarction, heart failure, pneumonia and major surgical procedures) but not for others between 2012 and 2019.

“We know what to do, we had approaches that have been successful, but that gets drowned out by all of the other conditions that have not shown improvement,” he says. “Despite improvements, safety issues persist and the pandemic exacerbated many issues.”

Like many other industries, health care employers are seeing common issues

among employees. Burn-out and staffing shortages, along with increased specialization and patient complexity have created more potential for adverse events for both patients and providers.

“Our patients can’t receive the best care possible unless our workforce is in top shape,” said Valdez.

Over the past several years health care systems, experts and agencies have created an action plan to advance patient and workforce safety. The plan focuses on multiple aspects of care from system culture and governance to patient and family engagement and system learning and education.

Valdez believes the action plan will not only improve safety, but also will lead to the goal of improving health care by lowering costs, improving outcomes and the experiences of both patients and providers. He has also challenged his staff to expand the way the agency and others look at quality measurement, with the hopes of preventing a backslide in areas that have improved.

“I’ve said it before, perhaps controversially, but this is a service industry and we can’t improve unless we know what the customer wants and needs,” says Valdez. “And that includes the workforce too.”

HPM’s Savitz Honored in 2022 Women of Impact Cohort



Nearly a decade ago a group of executive-level women from across the health care industry met to discuss their desire to leave a lasting legacy that addressed complex problems in the health care industry. Now known as the **Women of Impact**, the group agreed on a shared goal to realign health care to benefit all Americans.

Since its initial meeting, the group has expanded to more than a hundred executives, with the goal of empowering women leaders with a network to support and advise them.

Each year, current members nominate executives who have proven their influence and commitment to making a lasting difference in health care. In October, HPM professor and Director of External Affairs **Lucy Savitz** was honored by the organization and inducted as member of its 2022 Women of Impact cohort.

Department Updates

AcademyHealth ARM 2023: HPM Faculty, Staff, PhD candidates and alumni present work in Seattle

The Department of Health Policy and Management was well represented at the June 2023 AcademyHealth Annual Research Meeting in Seattle -- one of the top conferences for public health research. Members of the department presented posters, took part in panels and gave podium presentations on many facets of the school's research portfolio. During the conference, the department welcomed alumni and colleagues from across Pitt Health Sciences for a reception.



(Clockwise from top left):
- Seattle's famous Space Needle
-Dr. Lucy Savitz, HPM professor and director of external relations presents research
-PhD candidate Donald Bourne gives a podium presentation at the 2023 AcademyHealth ARM
-The sign above Seattle's iconic Pike Place Market
-HPM alumna Mara Hollander, PhD shows off her research poster in Seattle
-Students, faculty, staff, alumni and others mingle at a reception during ARM
-Dr. Lindsay Sabik, associate professor and vice chair for research, speaks about her research
-PhD candidate Stephanie Doran-Brubaker presents a poster during a session at ARM



Health Policy and Management Alumni

A Letter from the President of the HPM Alumni Association



The Health Policy and Management Alumni Association has been making great strides in the last few years and we are proud to say that progress continued this year with the support of our members. The mission of the Association is to promote and support the alumni community through advancement, education and networking, and to contribute to the growth and development of HPM students and related programs.

We have shifted our bank account into the Pitt system so that we could begin fundraising for events and allow the opportunity to contribute by donations for students to attend national events like ACHE and APHA meetings, as well as case competitions and more! The change also allows us to the work with the Office of Philanthropy and Alumni Engage-

ment to create fundraising drives through the EngagePitt Program.

In early September, the HPMAA hosted a student-alumni Mixer at Walter's BBQ Southern Kitchen in Lawrenceville. This is an annual event to welcome first-year students to the program and provide them with an opportunity to interact with local alumni. We had a great turnout, and the food was incredible!

We continue to support the Dawn Gideon Lecture and webcast, including the most recent event on November 14, 2022. We are pleased to share that the event was a success, which included over 150 alumni, faculty, staff and students, attending.

The topic for this year's Dawn Gideon Symposium was "The Parallel Pandemic: Impact on the Workforce." This panel was moderated by Marty Raniowski, executive vice president and CEO of the Pennsylvania Medical Society. He was joined by three panelists, including Ritu Thamman, clinical assistant professor of medicine, University of Pittsburgh and co-editor of "Prevention of Burnout in Medicine: Multimedia Primer and Lifebook"; Kimberly Finnerty, nurse and vice president of

workforce planning at Highmark; and Buffy Kelly, Huron Management director.

The topic ignited other related topics and concerns affecting the health care workforce and led to great discussion. Planning for the event is already underway and we look forward to another great event!

Throughout the year we found ways to stay engaged with the students and reconnect with our colleagues across the country.

In addition to the reception held by the School of Public Health at the American Public Health Association's (APHA) Annual Meeting in Boston, our members were able to meet fellow alumni and network with students and receptions hosted by the department at the ACHE Congress in Chicago in March and at AcademyHealth's ARM in Seattle at the end of June.

The HPM Alumni Association continues to meet bi-monthly to actively engage and stay connected with our alumni network.

We are also working on projects to help connect people with the first our of alumni-to-alumni mentoring panels happening in March and more

planned as we try to help our newest alumni in their careers.

In April, after commencement we welcomed the newest group of alumni into the association and look forward to seeing all that they do.

Thank you for your continued support of our HPM program, its students, faculty, and alumni!

**Alyshia Ravida, MHA
(HPM '10)**

President
Health Policy and
Management Alumni
Association

Alumni Career Updates

- **Kuo-Cherh Huang** (DrPH, '98) is associate dean of the College of Management at Taipei Medical University in Taiwan, where he is also professor of health care administration. Huang is a member of the editorial boards of open-access science journal PLOS ONE and the Journal of International Cooperation in Taipei.
- **Sunaina Kumar-Giebel** (MPH, '06) has been appointed director of the Veterans Affairs Rocky Mountain Network headquartered in Glendale, Colo. She will oversee delivery of health care services to more than 1 million eligible veterans at eight VA Medical Centers and more than 100 clinics in 10 states.
- **Tumader Khouja** (PhD '20) has accepted a position as a clinical assistant professor with at the University of Florida School of Dentistry.
- **Nathan Lampenfeld** (MPH '22) has been named a William and Hannah Penn Fellow with the Pennsylvania Department of Aging.

Alumni Updates



Credit: University of Pittsburgh School of Public Health
L-R: HPM associate professor Dr. Tina Hershey, Dr. Diane Howard (MPH '79), HPM professor and chair Dr. Julie Donoue, Danielle Nahas (MHA/MBA '23) and HPM associate professor and vice chair for education Dr. Kevin Broom at the Pitt Public Health Alumni Awards

HPM Alumna Dr. Diane Howard honored at Pitt Public Health Alumni Awards

Each year, the University of Pittsburgh School of Public Health recognizes six alumni for their contributions to public health. This year, Diane Howard, PhD, MPH('79) received the Distinguished Alumni Award for Teaching and Dissemination in recognition of her commitment to sharing knowledge both in and out of the classroom. Howard is associate professor and chair of health systems management at Rush University in Chicago, where she teaches capstone, health care in America and professionalism courses. Previously, she held leadership positions at Aetna Inc., U.S. Healthcare, the American Hospital Association, Lake Hospital Systems and Rush-Presbyterian-St. Luke's Medical Center.



Credit: University of Pittsburgh School of Public Health
Dr. Diane Howard (left) with her fellow award recipients and Dr. Maureen Lichtveld (third from right) Dean of Pitt Public Health, at the Alumni Awards ceremony.

Alumni Spotlight: Freda Koomson

Ask many graduate students how they answered questions during their admissions interview – and they won't remember, but now more than a decade after her interview, Freda Koomson ('13, MHA) remembers telling Dr. Michael Lin she had a passion for global health care management and was determined to make her mark. Her goal: Contributing to strengthening health system changes in her maternal homeland – Liberia, West Africa.

Koomson joined HPM in 2011, and in 2013 won the top prize in the master's category at the School of Public Health's annual Dean's Day competition, for her thesis.

After graduation, Koom-

son set out to make her goal a reality, first working with a health-oriented non-governmental organization that was the leading implementation partner of a National Community Health Assistant Program. She also worked as a consultant to USAID, evaluating the efficacy, success and challenges of the Partnership Advancing Community Services.

In 2016 she relocated to Monrovia, Liberia and most recently worked with the Yale University School of Medicine's Office of Global Health as part of a health systems strengthening consortium poised to rehabilitate and grow the health care workforce in Liberia following the Ebola

virus epidemic that had plagued the country for two years.

From 2017 until 2020, Koomson worked with Yale as a postgrad Senior Health Management associate, where she helped build a program for side-by-side mentorship with hospital staff and health care administrators and supervisors. The solutions-oriented approach focused on step-by-step problem solving. The project focused on several areas of quality improvement by creating performance management systems, strengthening management of medical records and promoting better management and inventory of the hospital pharmacy.

Her work also focused on

improving the quality of care and patient experience for patients living with HIV under the Human Resource & Service Administration PEPFAR Grant- Rebuilding Resilient Health Systems (RRHS). In addition to her work with the hospital, Koomson made pivotal contributions to the creation, launch and ongoing success of the University of Liberia's certificate program in health systems. She also advocated for the approval of a baccalaureate in public health that would serve as a precursor to the creation of the School of Public Health at the university, where she is currently a lecturer for the Health Systems MPH Program.

HPM Alumni Support Department and Students at Home, on the Road

Throughout the year, HPM alumni have answered the call to support the department and its students. Whether you have serving as a coach or and judge for case competitions, or took mentor students, or just spread goodwill at conferences here and abroad. We would like to thank everyone and wish them continued success.



Celebrating the Class of 2023





University of
Pittsburgh[®]

Health Policy and Management
School of Public Health

Stay Connected with HPM



@PittHPM



**facebook.com/
PittHPM**



**linkedin.com/in/
pitthpm/**

sph.pitt.edu/hpm

