

UNIT A 5731 GSF

UNDER AIR 4022 SF

GARAGE 1007 SF

EXTERIOR 702 SF



← N.E. MIZNER BLVD →



UNITS B,C, & D 5712 GSF

UNDER AIR 4015 SF GARAGE 966 SF EXTERIOR 731 SF

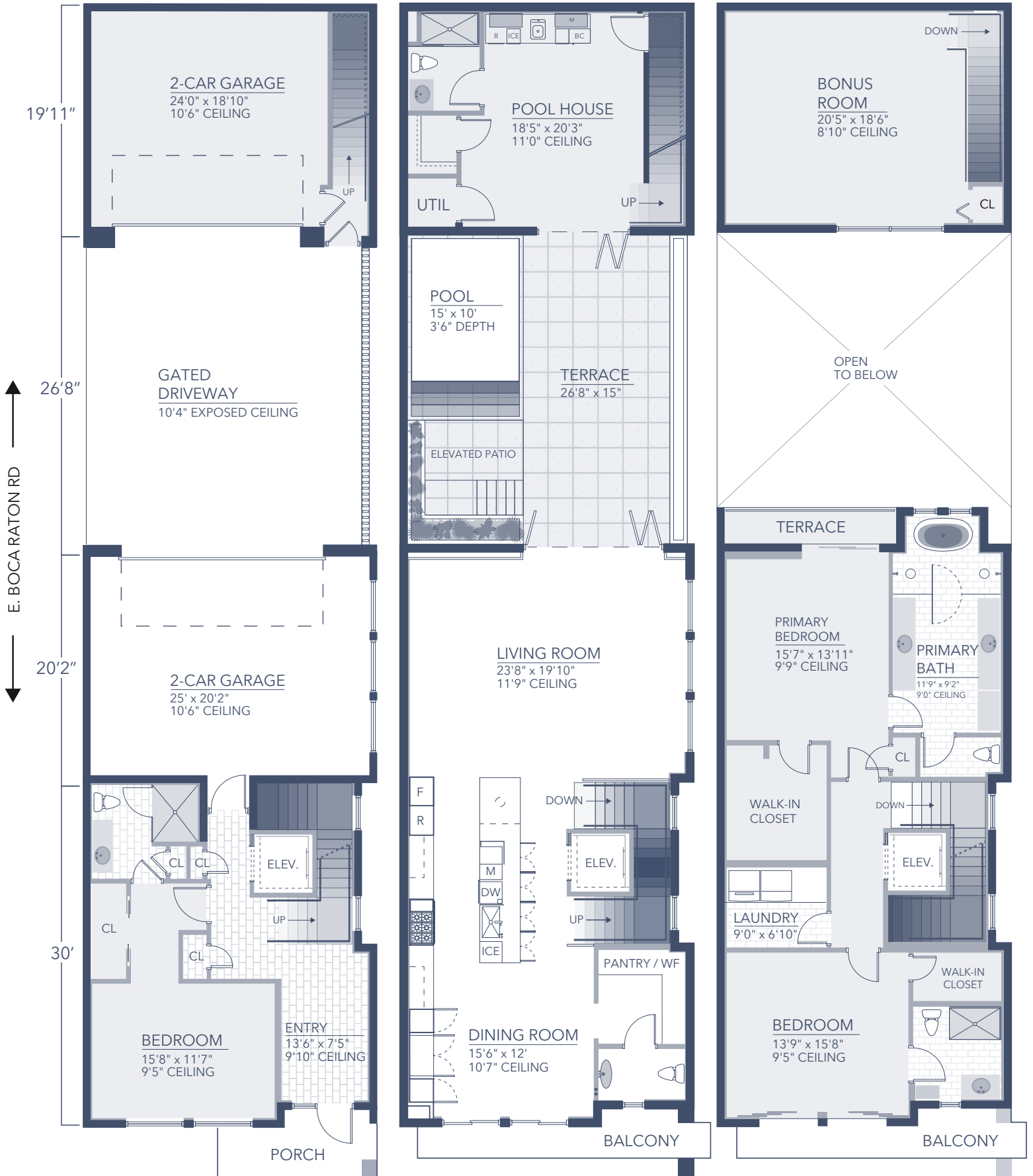


UNIT E 6104 GSF

UNDER AIR 4220 SF

GARAGE 1024 SF

EXTERIOR 860 SF



E. BOCA RATON RD

N.E. MIZNER BLVD

