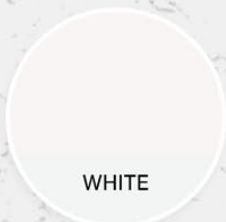


TILE GROUT

BEST QUALITY TILE JOINT FILLER

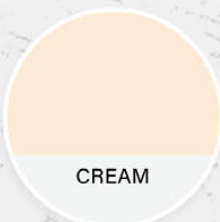


Non-Fading | Non-Cracking | Mold & Mildew Resistant | Excellent Joint Filler



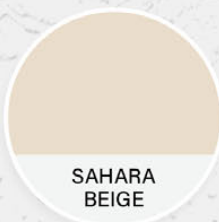
WHITE

SK-15



CREAM

SK-16



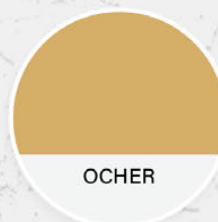
SAHARA
BEIGE

SK-1



MANGO
YELLOW

SK-4



OCHER

SK-17



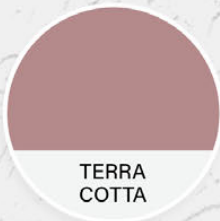
MOSS
GREEN

SK-7



PINK

SK-24



TERRA
COTTA

SK-11



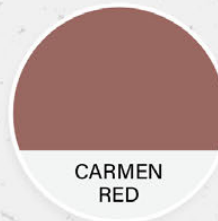
DARK
BEIGE

SK-22



SANDEL
BEIGE

SK-2



CARMEN
RED

SK-10



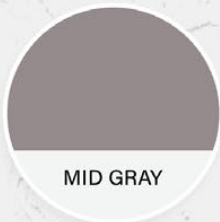
HAVANNA
BROWN

SK-19



LIGHT
GRAY

SK-14L



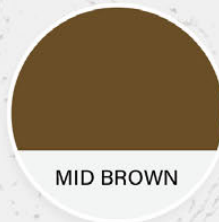
MID GRAY

SK-14M



CHARCOAL
GRAY

SK-13



MID BROWN

SK-6



DARK
BROWN

SK-20



BLACK

SK-12



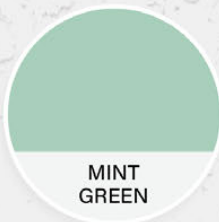
SORENTO
BLUE

SK-8



DARK
BLUE

SK-23



MINT
GREEN

SK-21



OLIVE
GREEN

SK-5



SCAN HERE

Color Disclaimer: Actual grout color may vary from the color samples

floorcenter.com | fctiledpot.com

Visit our Website!



SK-15
White

SHOP NOW

₱45.00
regular price



SK-16
Cream

SHOP NOW

₱48.00
regular price



SK - 1
Sahara Beige

SHOP NOW

₱48.00
regular price



SK - 4
Mango Yellow

SHOP NOW

₱48.00
regular price



SK - 17
Ocher

SHOP NOW

₱48.00
regular price



SK - 7
Moss Green

SHOP NOW

₱66.00
regular price



SK - 24
Pink



SK - 11
Terra Cotta



SK - 22
Dark Beige



SK - 2
Sandel Beige



SK - 10
Carmen Red



SK - 19
Havanna Brown



SK - 14L
Light Gray

SHOP NOW

₱48.00
regular price



SK - 14M
Mid Gray

SHOP NOW

₱48.00
regular price



SK - 8
Sorento Blue

SHOP NOW

₱66.00
regular price



SK - 23
Dark Blue

SHOP NOW

₱66.00
regular price



SK - 21
Mint Green

SHOP NOW

₱66.00
regular price



SK - 5
Olive Green

SHOP NOW

₱66.00
regular price



SK - 13
Charcoal Gray

SHOP NOW

₱66.00
regular price



SK - 6
Mid Brown

SHOP NOW

₱48.00
regular price



SK - 20
Dark Brown

SHOP NOW

₱48.00
regular price



SK - 12
Black

SHOP NOW

₱66.00
regular price

TILE GROUT

BEST QUALITY TILE JOINT FILLER

Non-Fading | Non-Cracking | Mold & Mildew Resistant | Excellent Joint Filler

Description:

FC Tile Grout is an excellent joint filler designed for grouting all types of ceramic tiles and natural stones. It is available in a wide range of colors to match most tiles available in the market. It is non-cracking, non-fading and mold resistant.

Mixing:

FC Tile Grout with clean water in a suitable container to form a mixture with a consistency similar to toothpaste. Allow this mixture to stand for a few minutes and then mix again before applying to joints.

Application:

1. Wet joint slightly before application of grout.
2. Mix tile grout as instructed and spread over joint by using a rubber float.
3. Exert some pressure to ensure grout is pressed deep into the joint space. Be sure to avoid air pocket from forming during application. Wipe off excess grout with damp sponge making use not to remove the wet grout from the joint While doing so.

Coverage:

Coverage depends upon the size of the tiles and the width of the joints. Average would be 1 kilogram grout for one square meter of 8" x 8" ceramic tiles with a 2.5-3mm width joint.

Packaging:

2 kilogram bag
10 bags per carton

