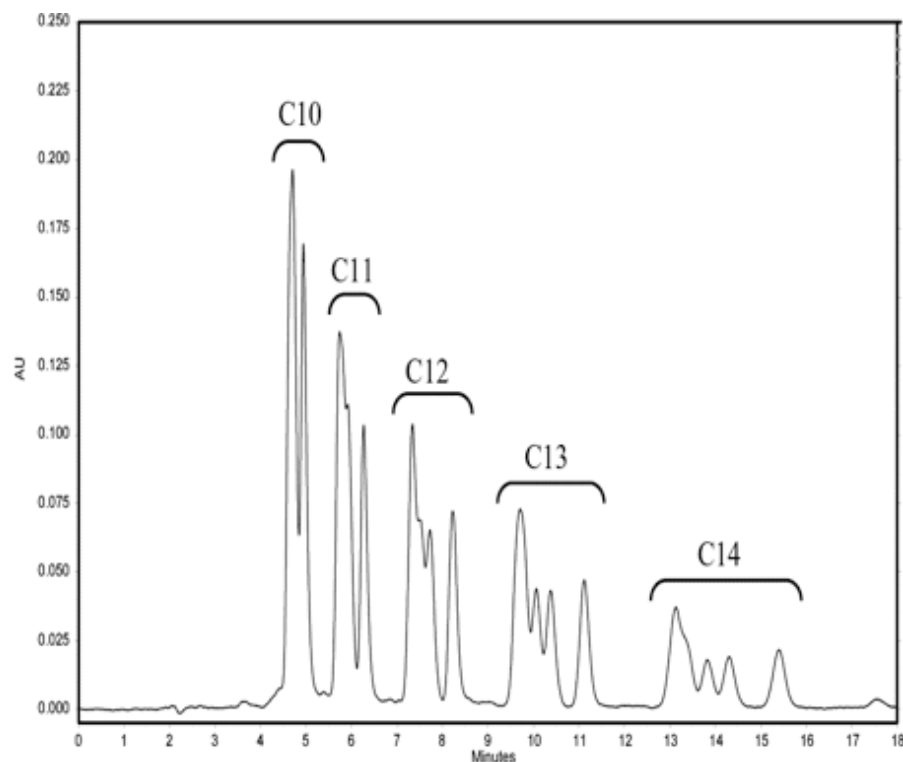


## Analysis of alkylbenzene sulfonate

Data No. LA338-0000



Column : Inertsil ODS-3  
5µm  
250×4.6mmI.D.

Column Cat. No. :

Eluent :: A) CH<sub>3</sub>CN, 0.1 M NaClO<sub>4</sub> B) H<sub>2</sub>O A/B = 65/35

Flow rate : 1.0mL/min

Col. Temp. : 40°C

Detection : UV 254 nmFL Ex 221 nmEm 284 nm (GL-7453 FL Detector)

Injection Vol. : 20 µL

Sample :

Solutes

1. Sodium Decylbenzenesulfonate  
C<sub>10</sub>H<sub>21</sub>C<sub>6</sub>H<sub>4</sub>SO<sub>2</sub>Na (2.0 mg/L)
2. Sodium Undecylbenzenesulfonate  
C<sub>11</sub>H<sub>23</sub>C<sub>6</sub>H<sub>4</sub>SO<sub>2</sub>Na (2.0 mg/L)
3. Sodium Dodecylbenzenesulfonate  
C<sub>12</sub>H<sub>25</sub>C<sub>6</sub>H<sub>4</sub>SO<sub>2</sub>Na (2.0 mg/L)
4. Sodium Tridecylbenzenesulfonate  
C<sub>13</sub>H<sub>27</sub>C<sub>6</sub>H<sub>4</sub>SO<sub>2</sub>Na (2.0 mg/L)
5. Sodium Tetradecylbenzenesulfonate  
C<sub>14</sub>H<sub>29</sub>C<sub>6</sub>H<sub>4</sub>SO<sub>2</sub>Na (2.0 mg/L)