

DESIGN HOME SPACE

---

# 'Lola The Ladybird' Collection

KIDS WALL ART COLLECTION

## PRODUCT CATALOG





## THE LADYBIRD LOLA for kids

Full of energy, fun and curiosity.  
Get to know **Ladybird Lola designs**





## EXPLORE the Collection

Ideal for a **girl's room**, **playroom** or a **nursery**.



Lola Snoozing



Lola & the Star



Lola Posing



Lola & Lollipop



Lola on the Swing

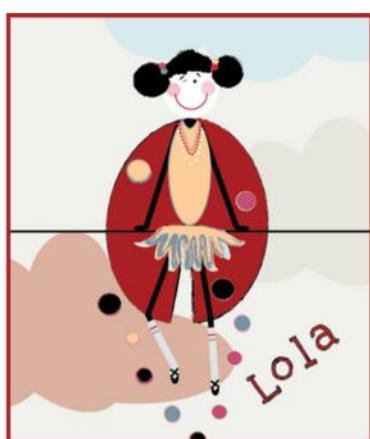


Lola & the Kite





**Lola in the Sky**



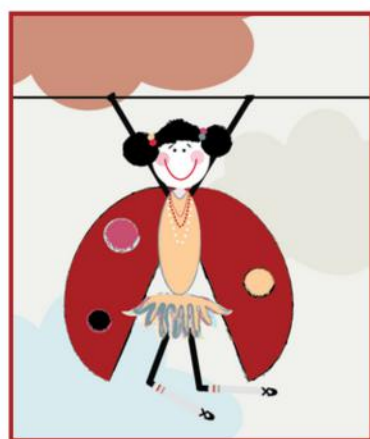
**Lola Ballerina**



**Lola and Balloons**



**Lola Hanging**



**Lola on the Swing**



**Lola Juggling**







Lola in the Sky



Lola Bravo



Lola Let It Go



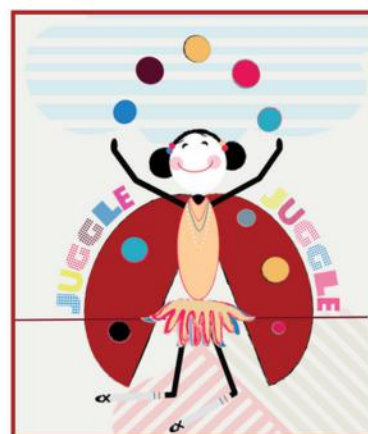
Lola Love Hanging Out

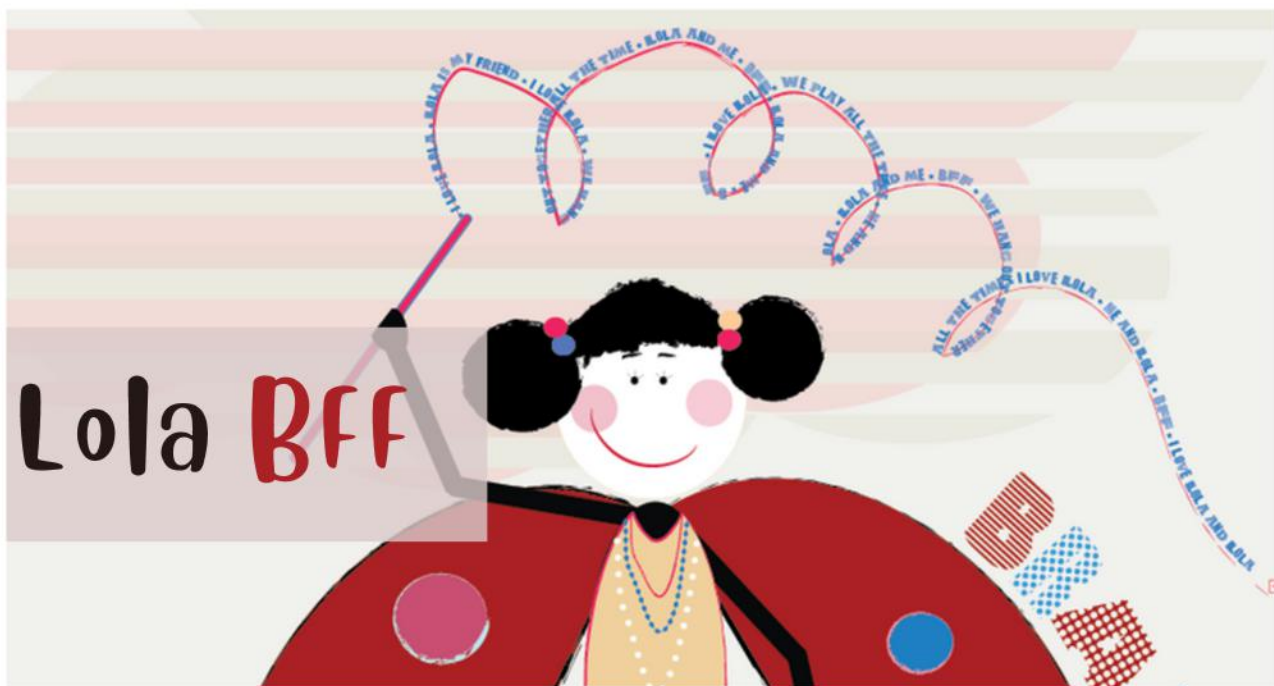


Lola Sweet Sweet



Lola Juggle Juggle





Lola Zzzzzzz



Lola  
You Shine Like a Star



Lola  
Dream On



Lola Loli  
Loli, Loli-Pop



Lola Oh Hey



Lola & the Kite







Posters



Framed Posters



WallPaper



Printed Canvas





## POSTERS for Kids

For great, inspiring and creative kid's interiors

# POSTERS

Make your home space special and exciting. Posters are the easiest way to create monumental, intimate or magical moments.

Make those moments long-lasting and luxurious with Design Home Space premium posters.



Our posters are printed on **premium matte paper** that has a natural, smooth uncoated finish that **feels luxurious**.



The 200 gsm/ 80 lb paper weight makes it **durable** and **long-lasting**



We use **FSC-certified paper** or equivalent certifications depending on regional availability. It's **better for the people and the planet**.



Each poster and frame is shipped in robust packaging, ensuring it arrives in pristine condition.

resistant  
to fade

long-  
lasting  
Print

high  
quality  
Paper









## **FRAMED POSTERS** *for kids*

Crafted with premium wooden frames for  
lasting beauty and durability



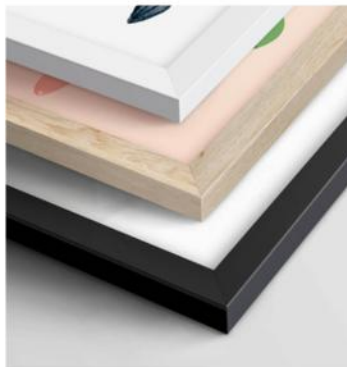
# FRAMED POSTERS

The frames are made from pine and come in four colors: **black**, **white**, **natural wood**, and **dark brown wood**.



## FRAMED POSTERS SIZES AVAILABLE:

21 x 29.7 cm | 8 x 12"  
30 x 40 cm | 12 x 16"  
40 x 50 cm | 16 x 20"  
45 x 60 cm | 18 x 24"  
60 x 90 cm | 24 x 36"



# FRAMED POSTERS

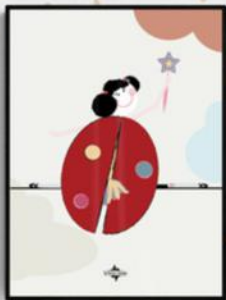
These frames will be with you **for years!** The frames are 20-25mm /0.79"-0.98" thick and 10-14mm /0.4"-0.6" wide, providing the perfect balance of **durability** and **style**.



wood



dark  
wood



black



white



CHOOSE SAFETY AND CHOOSE CONVENIENCE

For you and for your little ones, make this choice safe. To keep your poster looking its best, we use **shatterproof**, transparent plexiglass to protect it from damage.







## PRINTED CANVAS for Kids

Durable, vibrant canvas print of Lola



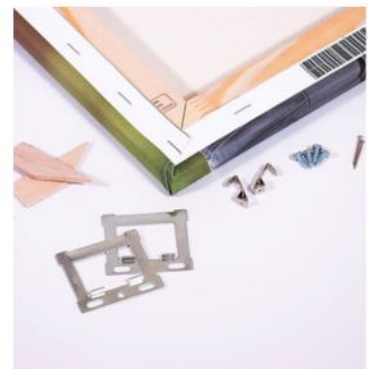
# PRINTED CANVAS

Enhanced texture and timeless beauty with our canvas print. The canvas texture enhances the image's natural look and feel, creating a truly immersive **art experience**.



## CANVAS SIZES AVAILABLE:

30 x 40 cm | 12 x 16"  
40 x 50 cm | 16 x 20"  
50 x 60 cm | 20 x 24"  
60 x 80 cm | 24 x 32"



# PRINTED CANVAS



## CLASSIC AND SUSTAINABLE

We use **responsibly sourced wood** for stretcher bars, mainly **FSC-certified wood**, to make our canvas prints, ensuring a **long-lasting** and **high-quality** product.



## LONG-LASTING QUALITY FOR YOUR HOME:

We use **coated fabric**, a blend of cotton and polyester, for our canvas substrate.



## NO COMPROMISE

This provides a weight of approximately 300-350gsm/110-130lb cover and a thickness of 350-400 microns, giving you a **sturdy and durable product**.



## NO EXTRA WORK FOR YOU

We've also included a **hanging kit** for your canvas so the installation is completely **hassle-free** for you.



## SAFE AND SECURE DELIVERY

To ensure no damage during transportation, we ship our canvas prints in **protective packaging** and strong boxes.





## WALLPAPER for Kids

Create a very special and one-of-a-kind wall decoration in your children's room.

# WALLPAPER



**VINYL MATTE, SELF-ADHESIVE WALLPAPER**

			
<b>Peel &amp; stick</b> application: stick directly to a smooth and well primed surface	<b>Universal application</b> for: furniture, walls, tiles, doors old wallpapers	<b>Excellent durability</b>	<b>Photographic print quality</b>



# WALLPAPER



## NON-WOVEN, PREMIUM WALLPAPER

- **easy to apply** (dimensionally stable and tear-resistant)
- **resistant** to cracks and scratches
- easy to dismantle without leaving any traces
- **FSC-certified paper** and the wallpaper produced is CE marked
- assessed to meet high **safety, and health standards**
- **no PVC** and other harmful compounds



## ROOM CONCEPTS for Kids

For great, inspiring and creative kid's interiors



# ROOM CONCEPTS

## *Lola's Bedroom Pink – Room Concept, Inspirational Moodboard*

This moodboard was inspired by the Lola BFF series. Lola the Ladybird is the heart and soul of the room concept. She's fun, sweet, and full of curiosity, and this space celebrates her girlhood not through pastel perfection, but through **warmth, softness, and character.**

### *Room vibes*

This bedroom is carefully styled to create a girly space that's sweet, soft, and fun, a room that feels dreamy but also real, warm, and full of personality. From colour choices to fabric textures, every element supports this mood.



### *Room Concept*

Get inspired by this room concept and adapt it to your own space, whether you're working with a small nook or a larger bedroom.

Start with the suggested colour palette, explore the room elements featured here, and either shop the recommended products or look for similar items that fit your style and budget.

Make it yours by reflecting your child's personality, routines, and interests — because the best rooms are the ones that feel lived in and loved.

### *Room design*

This room is mainly designed for a child starting with a low bed, like the one shown here, so around 2 years of age.

But you can easily adapt the concept for a nursery, as the colour palette is soft and calming. Simply swap the low bed for a cot, and when the time comes, transition to a toddler bed, for example, the house-shaped bed featured in this design.

# ROOM CONCEPTS

## *Room elements*

The vibe is set with key fabric pieces , starting with a **Shabby Chic-style Teepee Tent** featuring lace inserts, and a **Boho Bed House Canopy** in off-white cotton with decorative lace. These are stand-out, uniquely girly elements that define the softness of the space.

A small candy pink sofa from Buddha Bag Original, made of patterned corduroy, adds both texture and extra softness, it's cosy, tactile, and perfectly scaled for a child's room (80 cm in length).

## *Room accessorises*

Accessories complete the story with a touch of whimsy:

- Velvet pillows in soft tones
- Pillows with frills and romantic shapes
- A velvet star-shaped garland in dusty pink

Each piece brings richness and charm, creating visual interest through layered textures like velvet, cotton, corduroy, and lace.





# ROOM CONCEPTS

## *The girl's room colour palette*

The colour palette blends dusty pinks, deep reds, and creamy beiges, brought to life with accents of vibrant and soft blues. Together, they create a look that is feminine but not overly sweet, layered but calm, and always joyful.



## *Lola the Ladybird Wall Art*

Wall art used in this room includes:

Lola BFF, Shine Like a Star, Lola BFF Oh Hey, and Lola BFF Juggle Juggle Juggle.

Of course, you can always browse the full collection and choose a different Lola design, for example, something from the Lola the Lady series, which features a softer, less vibrant palette, such as Lola and the Kite or Lola in the Sky.

### *Lola Bff Series:*

↓  
Lola BFF, Shine Like a Star,  
Lola BFF Oh Hey,  
Lola BFF Juggle Juggle Juggle.

### *Lola The Lady Series:*

↓  
Lola and the Kite or  
Lola in the Sky



# ROOM CONCEPTS

## *Lola's Bedroom Blue – Room Concept, Inspirational Moodboard*

This room concept also reflects the Lola the Ladybird girly vibe – sweet, soft, and full of charm.

In this moodboard, pink shades and soft beige take the lead, creating a warm, delicate atmosphere. But this version shows how to break away from an all-pink look by adding a blue accent – a smart contrast that brings freshness and balance.

Play around with colour combinations within this suggested palette – soft pinks, beige, blue – and let her personality guide the final look.



### *Room Concept*

Get inspired by this room concept and adapt it to your own space, whether you're working with a small nook or a larger bedroom.

Start with the suggested colour palette, explore the room elements featured here, and either shop the recommended products or look for similar items that fit your style and budget.

Make it yours by reflecting your child's personality, routines, and interests – because the best rooms are the ones that feel lived in and loved.

### *Room design*

This room is mainly designed for a child starting with a low bed, like the one shown here, so around 2 years of age.

But you can easily adapt the concept for a nursery, as the colour palette is soft and calming. Simply swap the low bed for a cot, and when the time comes, transition to a toddler bed, for example, the house-shaped bed featured in this design.



# ROOM CONCEPTS

## Room elements

The vibe is set with key fabric pieces , starting with a **Shabby Chic-style Teepee Tent** featuring lace inserts, and a **Boho Bed House Canopy** in off-white cotton with decorative lace. These are stand-out, uniquely girly elements that define the softness of the space.

A small candy pink sofa from Buddha Bag Original, made of patterned corduroy, adds both texture and extra softness, it's cosy, tactile, and perfectly scaled for a child's room (80 cm in length).

## Room accessorises

Accessories complete the story with a touch of whimsy:

- Velvet pillows in soft tones
- Pillows with frills and romantic shapes
- A velvet star-shaped garland in dusty pink

Each piece brings richness and charm, creating visual interest through layered textures like velvet, cotton, corduroy, and lace.



# ROOM CONCEPTS

## *The girl's room colour palette*

The pink and deep red shades complete the overall look of the space, but in this room concept, it's the deeper blue that serves as the main contrasting accent. Paired with lighter shades of blue, it creates a slightly different vibe than the previous room concept – still soft, but with a cooler, more balanced energy. You can always play with the colours and adjust the intensity depending on what your child loves most.



## *Lola the Ladybird Wall Art*

You can experiment and see which posters work best in this room. Below, you can see three Lola the Lady framed posters in natural wood frames: Lola and Balloons, Lola Ballerina, and Lola Snoozing. Take a look at the previous page to compare them with the Lola BFF framed posters: Lola BFF Let it Go Go Go, Lola BFF Bravo, and Lola BFF Zzzzz. Of course, you can always browse the full catalogue and explore the entire Lola collection to find the design that fits your space best.



### *Lola The Lady Series:*

Lola and Balloons, Lola Ballerina  
Lola Snoozing

### *Lola Bff Series:*

Lola BFF, Loli, Loli, Loli,  
Lola BFF, Love Hanging Out







**SHOP THE COLLECTION**

[www.designhomedspace.com](http://www.designhomedspace.com)

