

### Specifications

Models	S-60 HF		S-65 HF	
Measurements	US	Metric	US	Metric
Working height maximum*	66 ft 2 in	20.33 m	71 ft 2 in	21.86 m
Platform height maximum	60 ft 2 in	18.33 m	65 ft 2 in	19.86 m
Horizontal reach maximum	46 ft 7 in	14.21 m	51 ft 2 in	15.60 m
Below ground reach	4 ft 5 in	1.34 m	7 ft 5 in	2.27 m
▲ Platform length - 8 ft model	3 ft	0.91 m	3 ft	0.91 m
Platform length - 6ft model	2 ft 6 in	0.76 m	2 ft 6 in	0.76 m
▲ Platform width - 8 ft model	8 ft	2.44 m	8 ft	2.44 m
Platform width - 6ft model	6 ft	1.83 m	6 ft	1.83 m
▲ Height - stowed	9 ft 4 in	2.85 m	9 ft 4 in	2.85 m
▲ Length - stowed	28 ft 7 in	8.71 m	32 ft	9.76 m
- stowed (jib tucked under)	-	-	25 ft 7 in	7.80 m
▲ Width	8 ft 5 in	2.55 m	8 ft 5 in	2.55 m
▲ Wheelbase	8 ft 2 in	2.50 m	8 ft 2 in	2.50 m
▲ Ground clearance - center	17.3 in	0.44 m	17.3 in	0.44 m

### Productivity

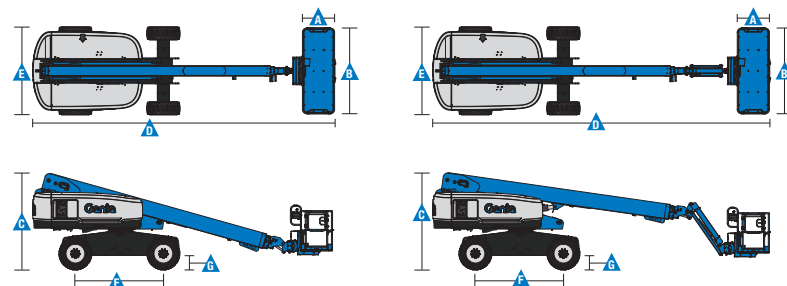
Maximum lift capacity - unrestricted	600 lb	272 kg	600 lb	272 kg
- restricted	1,000 lb	454 kg	1,000 lb	454 kg
Platform rotation	160°	160°	160°	160°
Vertical jib rotation - up/down	-	-	133° (+ 79° / -54°)	
Turntable rotation	360° continuous		360° continuous	
Turntable tailswing	4 ft 6 in	1.38 m	4 ft 6 in	1.38 m
Drive speed - stowed	3.0 mph	4.8 km/h	3.0 mph	4.8 km/h
- raised/extended	0.66 ft/s	0.2 m/s	0.66 ft/s	0.2 m/s
Gradeability - stowed**	45%		45%	
Turning radius - inside	10 ft 10 in	3.29 m	10 ft 10 in	3.29 m
Turning radius - outside	18 ft 3 in	5.57 m	18 ft 3 in	5.57 m
Controls	12 V DC proportional		12 V DC proportional	
Tires - High Flotations	Air filled 41/18LL x 22.5, 20 ply		Air filled 41/18LL x 22.5, 20 ply	
Ground pressure	100 psi	690 kPa	100 psi	690 kPa

### Power

Power source	48 hp (35.79 kW) Deutz diesel T4f D2.9L4			
	48 hp (35.79 kW) Deutz diesel T4i D2011L03i			
	49 hp (36.54 kW) Perkins turbo diesel T4f 404F-E22T			
	51 hp (38kW) Perkins Diesel 404D-22			
	74 hp (55.18 kW) Deutz turbo diesel T4i D2011L04i			
	74 hp, Deutz Turbo Diesel T4f TD2.9L4			
	60 hp (44.74 kW) Ford gas/LPG MSG425			
Auxiliary power unit	12 V DC		12 V DC	
Hydraulic tank capacity	40 gal	151 L	40 gal	151 L
Fuel tank capacity - diesel	35 gal	132 L	35 gal	132 L
- gas	30 gal	114 L	30 gal	114 L

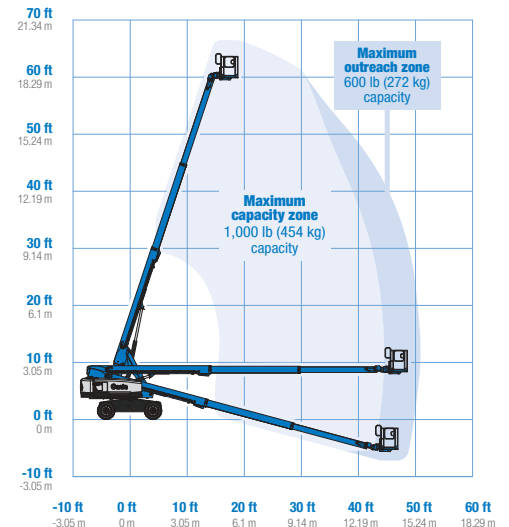
### Weight\*\*\*

Standards Compliance	ANSI/SAIA A92.20, CSA B354.7, GB 25849, EN 280, AS/NZS 1418.10			
	22,224 lb	10,081 kg	24,454 lb	11,092 kg

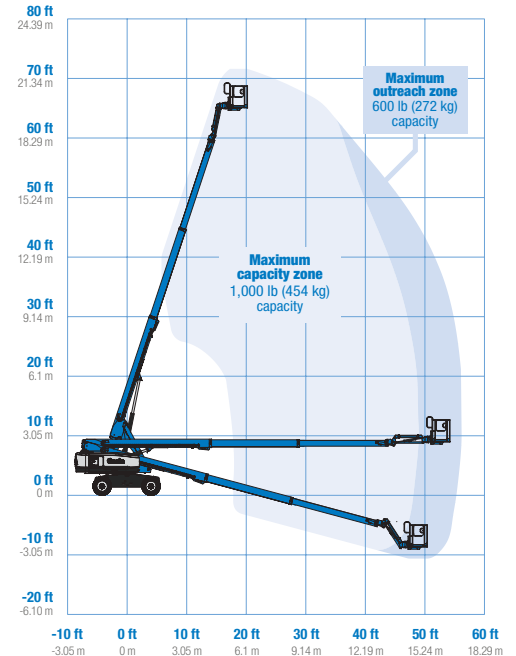


Preliminary Specifications Subject to Change  
Effective Date: April, 2019

### Range Of Motion S-60 HF



### Range Of Motion S-65 HF



\* The metric equivalent of working height adds 2 m to platform height. U.S. adds 6 ft to platform height.  
\*\* Gradeability applies to driving on slopes, see operator's manual for details regarding slope ratings.  
\*\*\* Weight will vary depending on slope, see operator's manual for details regarding slope ratings.

### Features

Standard Features	Easily Configured To Meet Your Needs	Options & Accessories
<p><b>Measurements</b></p> <p><b>S-60 HF</b></p> <ul style="list-style-type: none"> <li>• 66 ft 2 in (20.33 m) working height</li> <li>• 48 ft (14.62 m) horizontal reach</li> <li>• 600 lb (272 kg) unrestricted and 1,000 lb (454 kg) restricted lift capacity</li> </ul> <p><b>S-65 HF</b></p> <ul style="list-style-type: none"> <li>• 71 ft 2 in (21.86 m) working height</li> <li>• 51 ft 2 in (15.60 m) horizontal reach</li> <li>• 600 lb (272 kg) unrestricted and 1,000 lb (454 kg) restricted lift capacity</li> </ul> <p><b>Productivity</b></p> <ul style="list-style-type: none"> <li>• Self-leveling platform</li> <li>• 160° hydraulic platform rotation</li> <li>• Proportional joystick controls</li> <li>• Fuel select switch on platform and ground control panels (Gas/LPG models)</li> <li>• Active oscillation</li> <li>• Flashing beacon and travel alarm</li> <li>• Drive enable</li> <li>• AC power cord to platform</li> <li>• Horn</li> <li>• Hour meter</li> <li>• Tilt alarm</li> <li>• Descent alarm</li> <li>• 360° continuous turntable rotation</li> <li>• Positive traction drive</li> <li>• Two speed wheel motors</li> <li>• Platform Load sense system</li> <li>• Entry Toeboard</li> <li>• Hydraulic oil cooler</li> <li>• Alarm package</li> <li>• Work tray</li> <li>• Lift Guard™ Contact Alarm</li> </ul>	<p><b>Platform Options</b></p> <ul style="list-style-type: none"> <li>• Steel 8 ft (2.44 m) tri entry with side swing gate (standard)</li> <li>• Steel 6 ft (1.83 m) dual entry with side swing gate</li> </ul> <p><b>Jib Options</b></p> <ul style="list-style-type: none"> <li>• Non-jib (S-60 only)</li> <li>• 5 ft (1.52 m) jib boom (S-65 only)</li> </ul> <p><b>Engine Options</b></p> <ul style="list-style-type: none"> <li>• 48 hp (35.79 kW) Deutz diesel T4f D2.9L4</li> <li>• 48 hp (35.79 kW) Deutz diesel T4i D2011L03i</li> <li>• 49 hp (36.54 kW) Perkins turbo diesel T4f 404F-E22T</li> <li>• 51 hp (38kW) Perkins Diesel 404D-22</li> <li>• 74 hp (55.18 kW) Deutz turbo diesel T4i D2011L04i</li> <li>• 74 hp, Deutz Turbo Diesel T4f TD2.9L4</li> <li>• 60 hp (44.74 kW) Ford gas/LPG MSG425</li> </ul>	<p><b>Productivity Options</b></p> <ul style="list-style-type: none"> <li>• Lift Guard Platform Mesh - Half</li> <li>• Lift Guard Platform Mesh - Full</li> <li>• Lift Guard Platform Mesh - Screen (8ft platform only)</li> <li>• Platform top auxiliary rail</li> <li>• Lift Power™ <ul style="list-style-type: none"> <li>- 3 kW AC Generator</li> <li>- 12 kW 240 V / 60 Hz Welder Ready package</li> <li>- 7kw Welder Ready package</li> <li>- 12 kW Welder Equipped, Select Lincoln or Miller (12 kW options include a fire extinguisher and fireproof sleeves)</li> </ul> </li> <li>• Air line to platform</li> <li>• Specialty hydraulic oil (cold weather, fire resistant, or biodegradable)</li> <li>• Hostile environment kit</li> <li>• Deluxe hostile environment kit</li> <li>• Aircraft protection package (6 ft platform)</li> <li>• Thumb rocker steer</li> <li>• Panel cradle package</li> <li>• Lockable platform control box covers</li> <li>• Second battery</li> <li>• Tow package</li> <li>• Work lights package (2 on chassis, 2 on platform)</li> <li>• Operator Protective Structure*****</li> <li>• Fall Arrest Bar</li> </ul> <p><b>Power Options</b></p> <ul style="list-style-type: none"> <li>• Engine gauge package***</li> <li>• Cold Weather Packages</li> <li>• Diesel scrubber/muffler (catalytic muffler)****</li> <li>• LPG tank 33.5 lb (15.19 kg) capacity</li> <li>• Intake air pre-cleaner****</li> <li>• Positive air shutoff system (Deutz engine only)</li> </ul> <p>* Also available as Tier 4i in limited regions  ** Available only with Track system option  *** Available only with Ford engine  **** Available only with Tier 4i diesel engines  ***** Available through aftermarket parts only</p>
<p><b>Genie United States</b></p> <p>6464 185th Ave. NE  Redmond, WA 98052</p> <p>Telephone +1 (425) 881-1800  Toll Free in USA/Canada +1 (800)-536-1800  Fax +1 (425) 883-3475</p>	<p><b>Distributed By:</b></p>	

Effective Date: April, 2019. Product specifications and prices are subject to change without notice or obligation. The photographs and/or drawings in this document are for illustrative purposes only. Refer to the appropriate Operator's Manual for instructions on the proper use of this equipment. Failure to follow the appropriate Operator's Manual when using our equipment or to otherwise act irresponsibly may result in serious injury or death. The only warranty applicable to our equipment is the standard written warranty applicable to the particular product and sale and we make no other warranty, express or implied. Products and services listed may be trademarks, service marks or trade names of Terex Corporation and/or their subsidiaries in the USA and many other countries. Terex, Genie and AWP are registered trademarks of Terex Corporation or its subsidiaries. © 2019 Terex Corporation.