

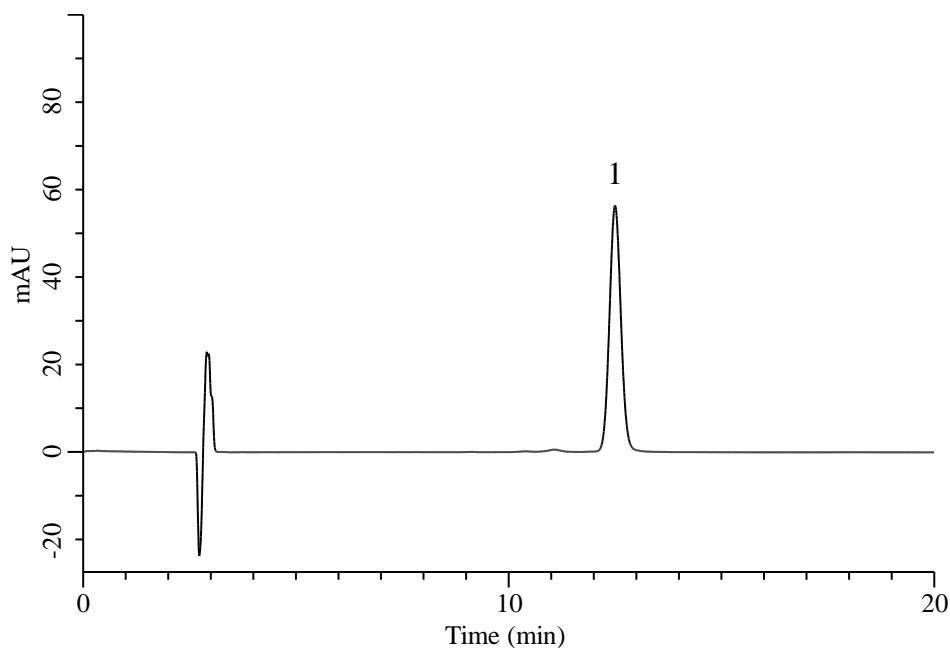
InertSearch™ for LC

Inertsil® Applications

Analysis of Tocopherol acetate

(Under the Condition of food additive analysis method in food ,Tocopheryl Acetate and d- α -Tocopheryl Acetate)

Data No. LB846-7111



Conditions

System : Chromaster HPLC system (HITACHI)

Column : InertSustain C18 (GL Sciences Inc.)
(5 μ m, 250 x 4.6 mm I.D.)

Column Cat. No. : 5020-07346

Eluent : CH₃OH

Flow Rate : 1.0 mL/min

Col. Temp. : 40 °C

Detection : UV 284 nm

Injection Vol. : 20 μ L

Sample : Standard

Analyte:

1. Tocopherol acetate 250 μ g/mL