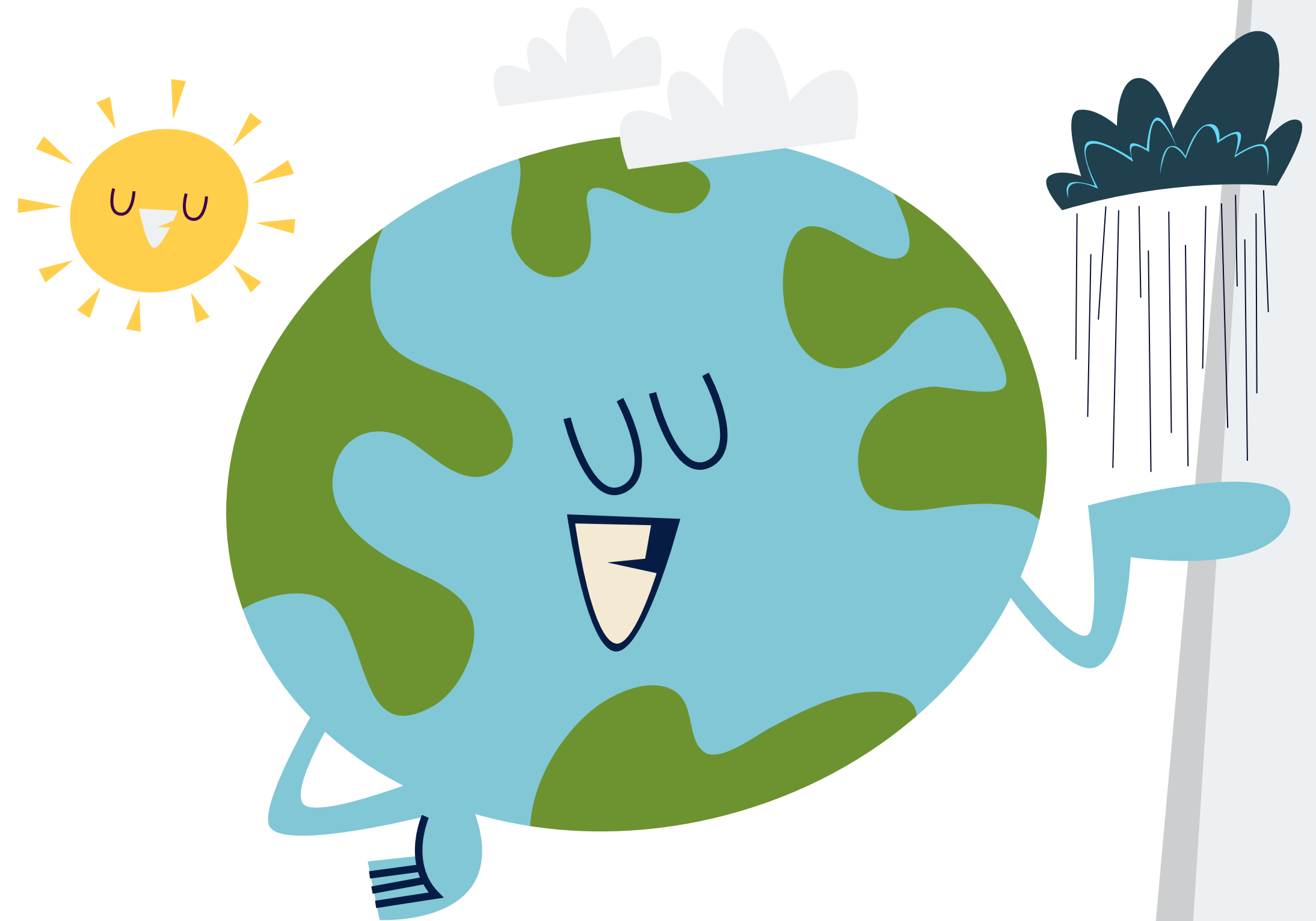


**WHAT IS CLIMATE
CHANGE?**

Climate change encompasses significant and lasting changes in the statistical distribution of weather patterns over periods extending from decades to millions of years.

It can manifest as changes in average weather conditions or the distribution of events around that average (e.g., more frequent and severe weather events).



From our education and learning, it's often highlighted that pollution and global warming are primary causes of climate change, and rightly so.

Greenhouse gasses, such as carbon dioxide (CO₂), methane (CH₄), and nitrous oxide (N₂O), trap heat in the Earth's atmosphere, creating a 'greenhouse effect'. This effect is natural and necessary to support life on Earth; however, human activities have significantly increased the concentration of these gases, enhancing the greenhouse effect and causing global warming.



THESE FACTORS IMMEDIATELY COME TO MIND WHEN CONSIDERING THE DRIVERS BEHIND THE CHANGING CLIMATE, REFLECTING A CORE UNDERSTANDING OF THE ENVIRONMENTAL CHALLENGES WE FACE.

**DO YOU THINK IT'S CRUCIAL
TO ADDRESS CLIMATE
CHANGE?
WHY SO?**



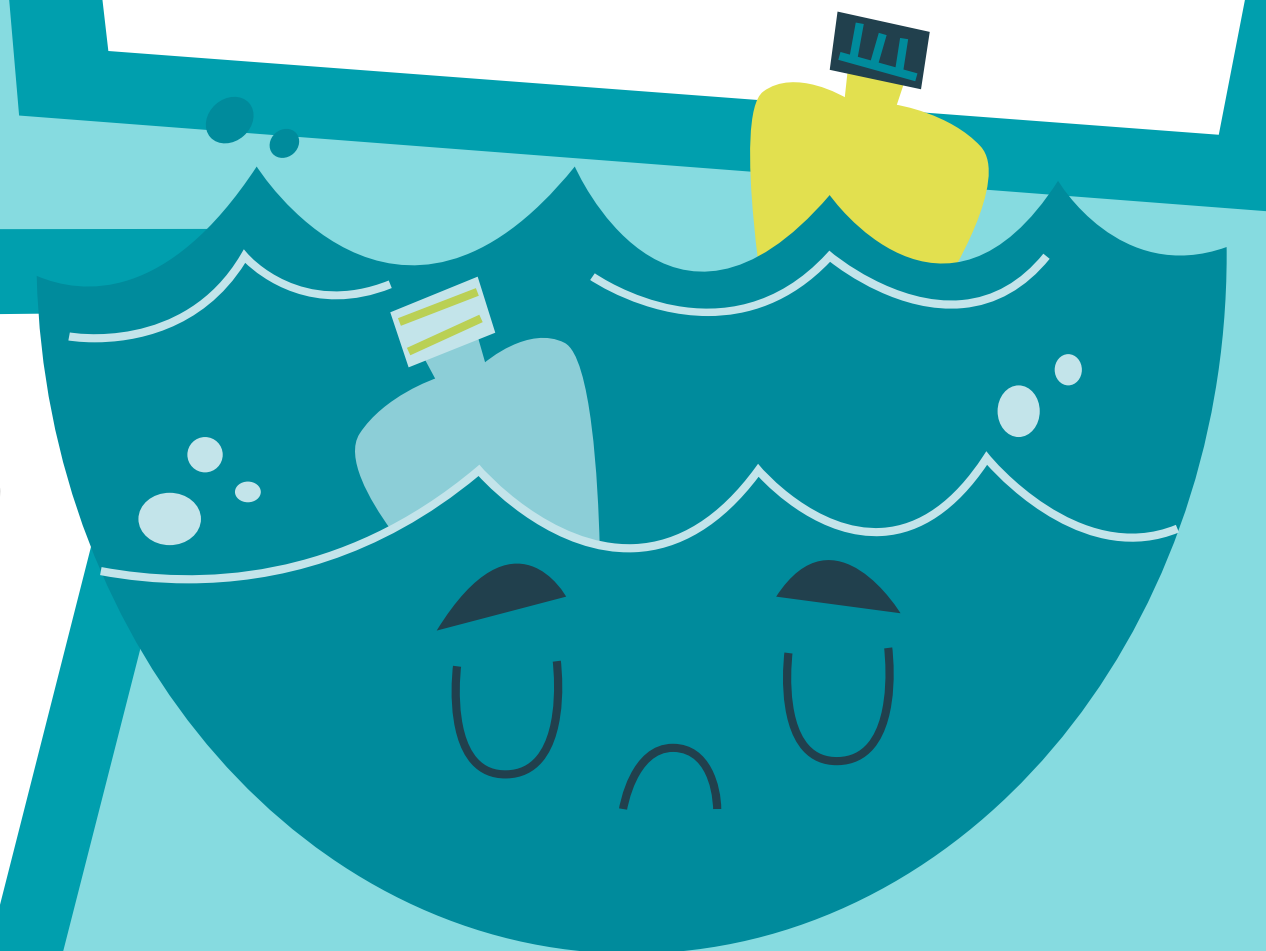
Addressing climate change is indeed crucial due to its far-reaching impacts.

Imagine a future where unchecked climate change has led to drastically altered natural ecosystems. Forests that once teemed with life have thinned, affecting biodiversity.



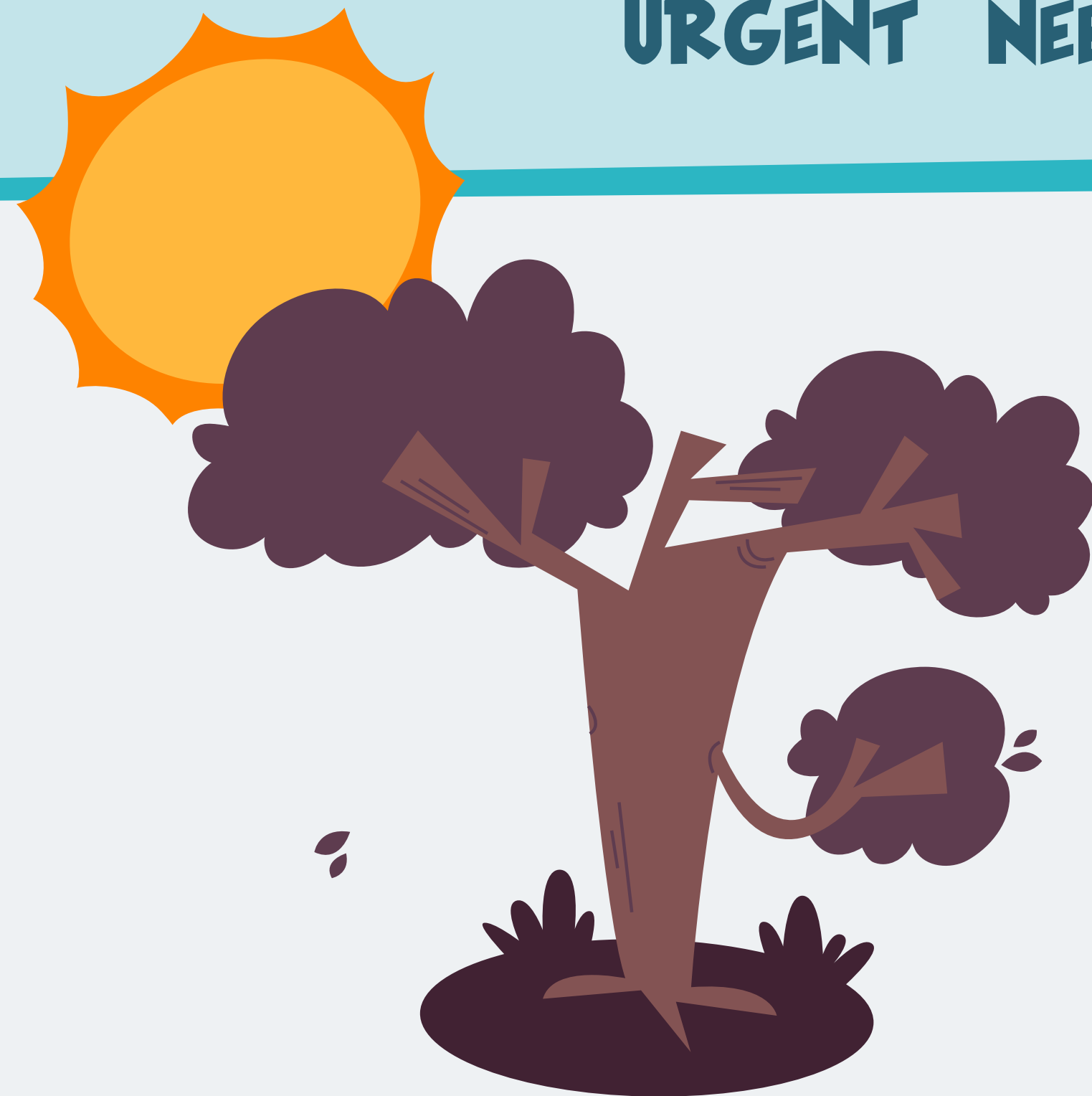
This in turn disrupts food chains, leading to food shortages.

Water supplies become scarce and polluted, impacting health and hygiene.



Extreme weather events become more frequent and severe, causing widespread destruction and economic turmoil.

IN SUCH A SCENARIO, THE VERY FABRIC OF LIFE, INCLUDING HUMAN SOCIETIES, FACES UNPRECEDENTED CHALLENGES, UNDERSCORING THE URGENT NEED FOR CLIMATE ACTION TODAY.

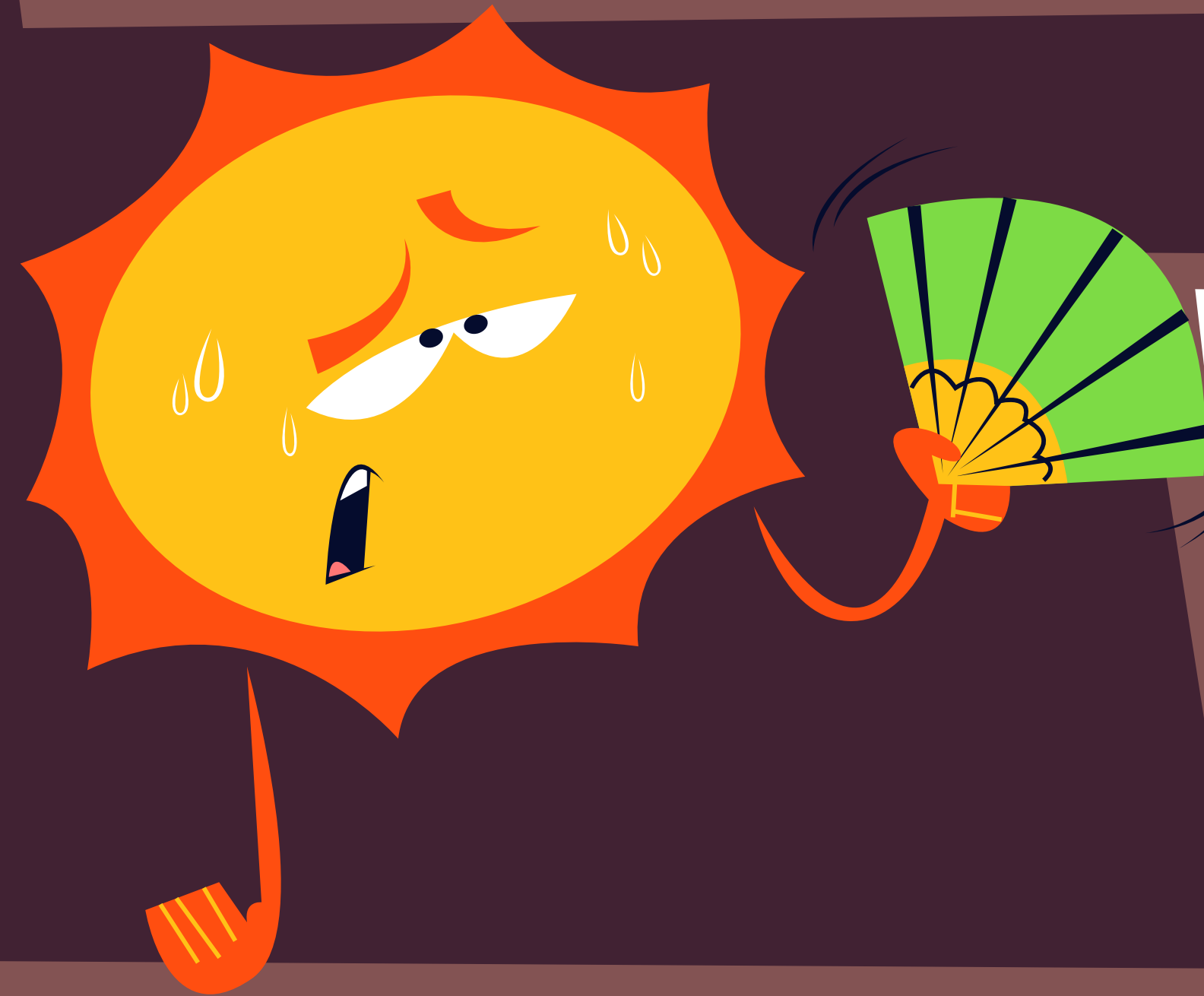
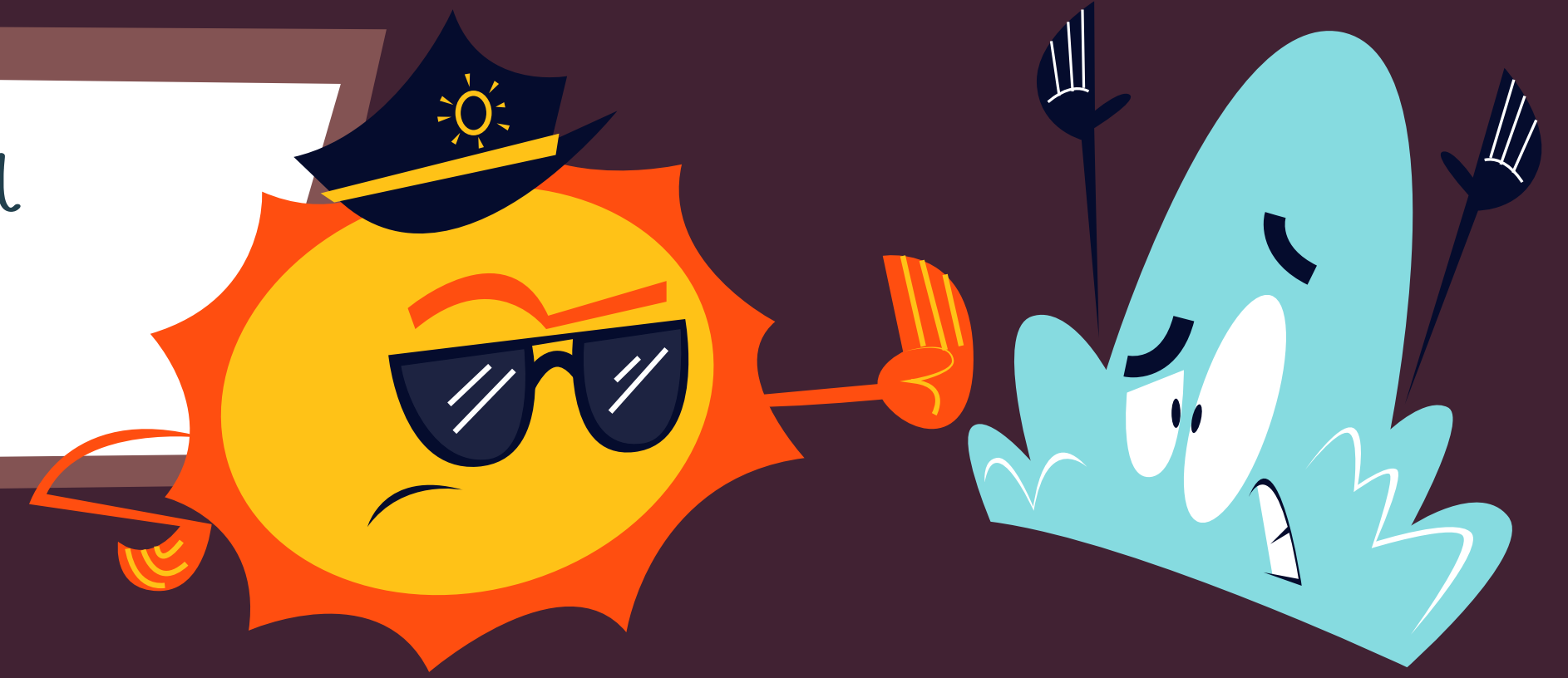


Imagine schools, as well, in coastal regions frequently closing due to intensified storms and flooding, disrupting education.



Women, often primary caregivers, struggle more to secure food and water as resources become scarce and agricultural yields decline. This situation underscores the urgency of climate action, including reducing emissions and promoting sustainable practices.

In the Middle East, climate change has led to significant natural disasters, with prolonged droughts being a primary concern.



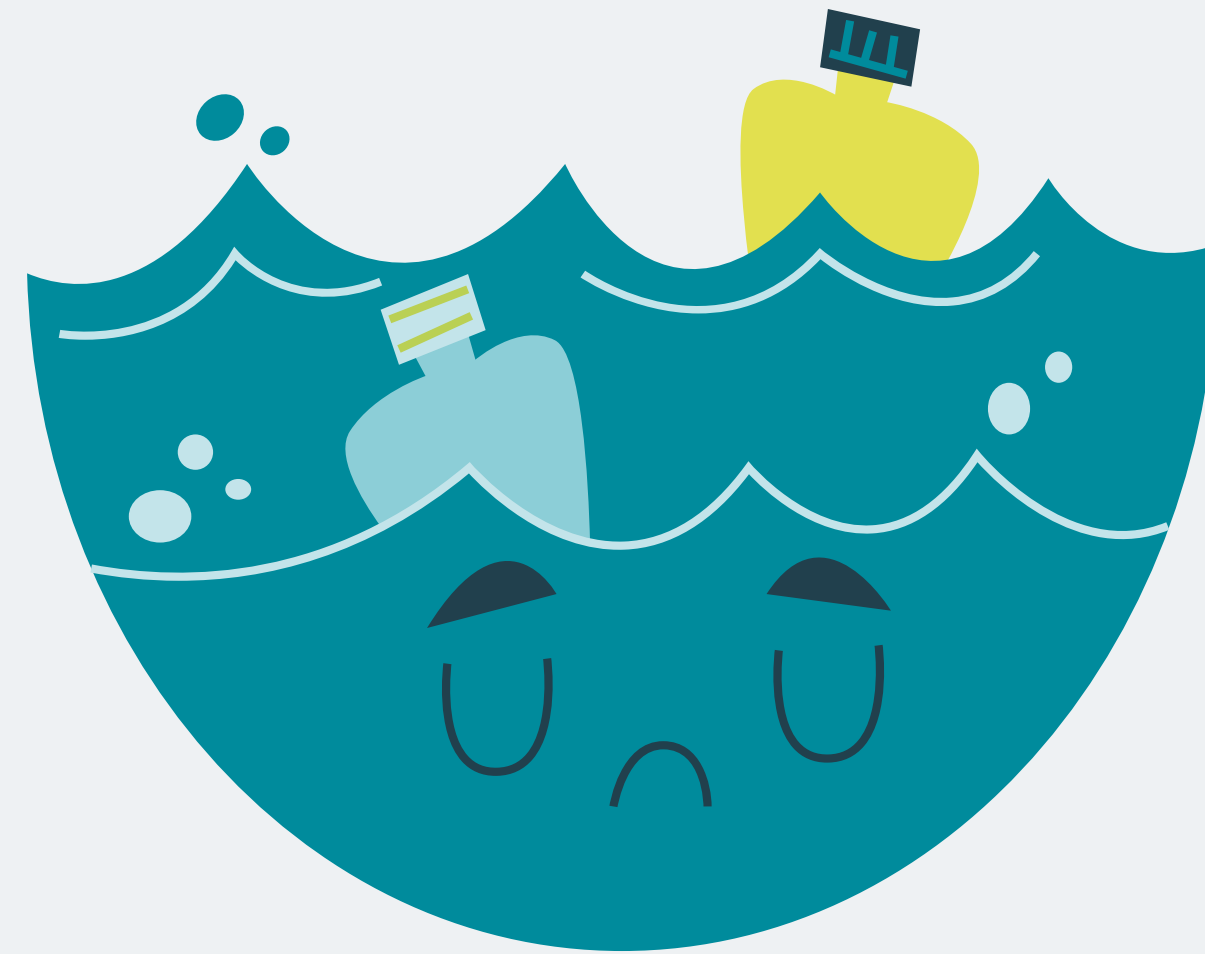
These droughts have resulted in agricultural failures and increased desertification, impacting the livelihoods of farmers and nomadic tribes who depend on fertile land for their animals and crops.

Additionally, urban areas like Cairo are experiencing more frequent and intense heat waves, affecting the health and daily lives of the urban population.



**THE CASE STUDIES THAT ARE MENTIONED
EARLIER ILLUSTRATE THE TANGIBLE,
OFTEN DEVASTATING EFFECTS OF CLIMATE
CHANGE ON DIVERSE COMMUNITIES WITHIN
THE REGION.**

Misconceptions, like the belief that climate change is a natural, benign process, hinder this vital action.



THE REALITY IS THAT HUMAN ACTIVITIES SIGNIFICANTLY CONTRIBUTE TO CLIMATE CHANGE, AND ITS IMPACTS ARE BOTH SEVERE AND WIDESPREAD.