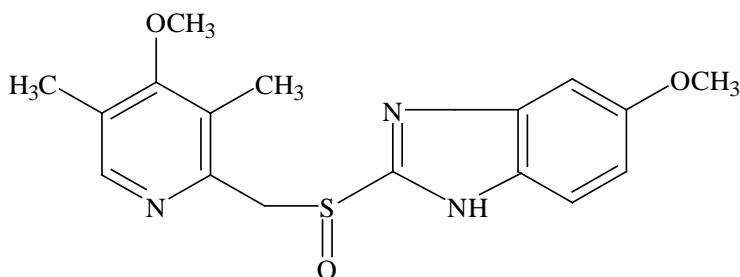


Analysis of omeprazole, used for the treatment of gastric and duodenal ulcers

Omeprazole is a drug that inhibits acid production, it is used in the treatment of stomach ulcers, duodenal ulcers, and reflux esophagitis. This application note presents a method for the extraction of omeprazole from serum using InertSep Phama and measurement with LC-MS/MS.

1. Flow diagram of solid phase pretreatment

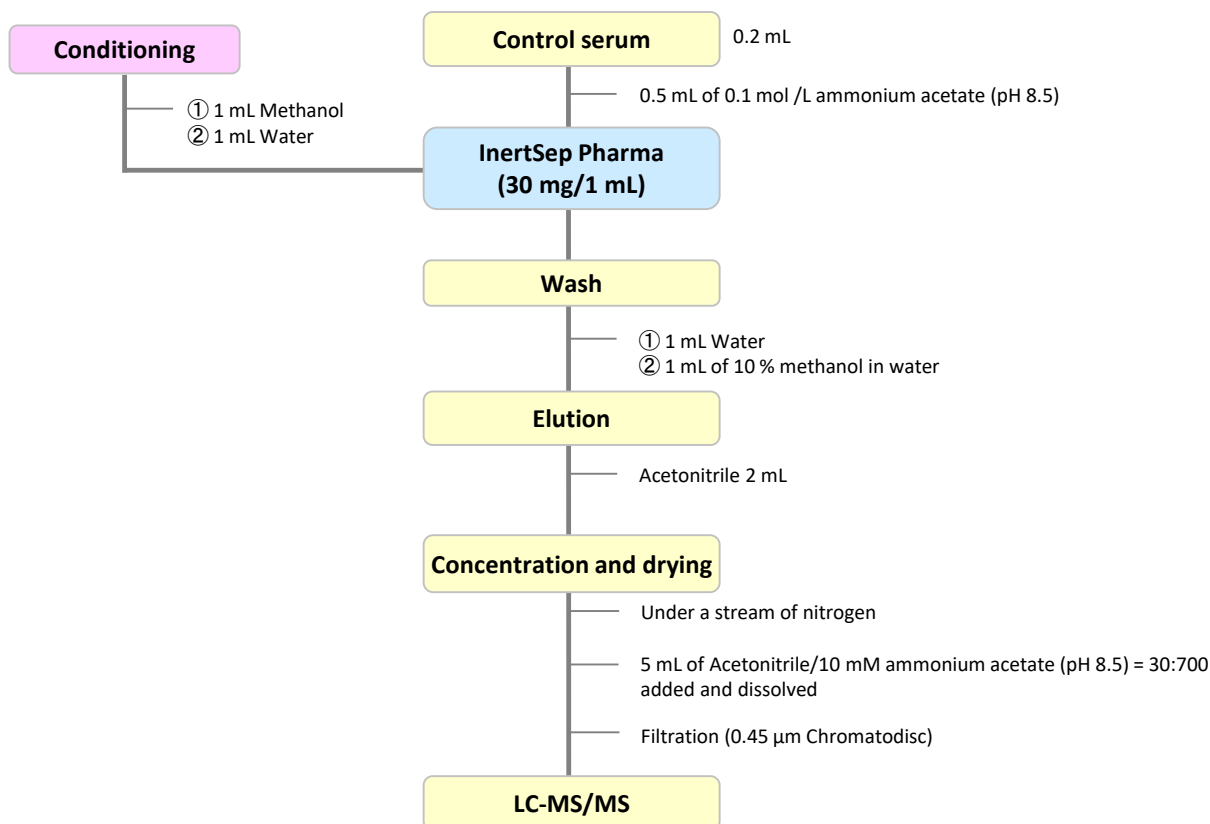
[Structure of omeprazole]



Omeprazole

Structures are created using Chemistry 4-D Draw which is provided by ChemInnovation Software, Inc.

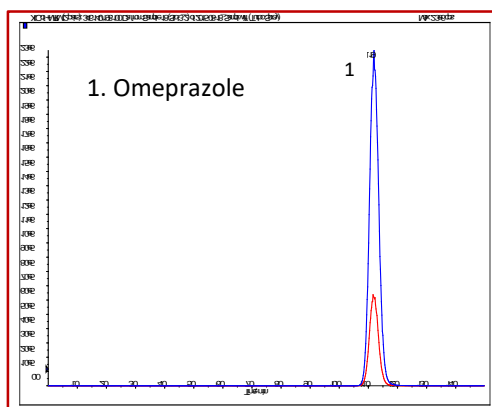
[Example of omeprazole pretreatment]



NOTE) This is a method developed by GL Sciences based on literature information.

2. Measurement conditions

Example: measurement of standard



HPLC conditions

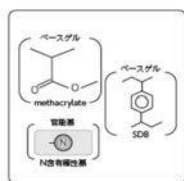
Column : InertSustain C18 (5 μm, 150 x 2.1 mm I.D.)
Eluent : A) CH₃CN
 : B) 10 mM HCOONH₄ in H₂O (pH7.6)
 A/B = 30/70, v/v
Flow rate : 0.2 mL/min
Column temperature : 30 °C
Detection : LC-MS/MS
 (API 4000 : ESI, Positive, MRM)

3. Measurement-related products

Injection volume : 10 μL
 : Omeprazole Q1/Q3 = Quantitative ion 346/198
 Confirmatory Ion 346/136

Solid-phase extraction column

[InertSep Pharma]



Mean particle size : 30 μm
 Surface Area : 600 m²/g
 Pore volume : 1.1 mL/g
 Pore size : 70 Å
 PH range of use : 1 - 14

InertSep Pharma is a complex polymer solid phase of N-containing methacrylate and styrene divinylbenzene. This is a reversed-phase polymer solid phase dedicated to pharmaceutical analysis developed for simultaneous screening of pharmaceutical compounds in biological materials.

Product name	Column size	Qty.	Cat.No.
InertSep Pharma	30 mg/1 mL	100 bottles	5010-27100

Chromatodisk

[GL chromatodisk]

A hydrophilic PTFE filter that can be used without pre-wetting in either aqueous or non-aqueous systems, with solvents of up to 100 % aqueous or acetonitrile.

Product name	Model	Diameter (mm)	Pore Size (μm)	Qty.	Cat.No.
Water/non-water (also)	4P	4	0.45	100	5040-28540

HPLC column

[InertSustain C18]



High purity spherical
 Silica gel : silica gel (ES silica)
 Surface Area : 350 m²/g
 Pore size : 100 Å
 Pore volume : 0.85 mL/g
 End capping : Yes
 Carbon : 14 %
 U S P Code : L1
 Recommended pH range for use : 1 - 10

InertSustain C18 is an ODS column that can be used with 100 % aqueous eluents. It was developed by pursuing inertness and chemical stability using GL Sciences' proprietary synthetic technology.

Product name	Particle size	Inside diameter	Length	Cat.No.
InertSustain C18	5 μm	2.1 mm	150 mm	5020-07315

GL Sciences disclaims any and all responsibility for any injury or damage which may be caused by this data directly or indirectly. We reserve the right to amend this information or data at any time and without any prior announcement.

GL Sciences, Inc. Japan

22-1 Nishishinjuku 6-Chome
 Shinjuku-ku, Tokyo,
 163-1130, Japan
 Phone: +81-3-5323-6620
 Fax: +81-3-5323-6621
 Email: world@glsc.co.jp
 Web: www.glsciences.com

GL Sciences B.V.

De Sleutel 9
 5652 AS Eindhoven
 The Netherlands
 Phone: +31 (0)40 254 95 31
 Email: info@glsciences.eu
 Web: www.glsciences.eu

GL Sciences (ShangHai) Ltd.

Tower B, Room 2003,
 Far East International Plaza,
 NO,317 Xianxia Road,
 Changning District.
 Shanghai, China P.C. 200032
 Phone: +86 (0)21-6278-2272
 Email: contact@glsciences.com.cn
 Web: www.glsciences.com.cn

GL Sciences, Inc. USA

4733 Torrance Blvd. Suite 255
 Torrance, CA 90503
 Phone: 310-265-4424
 Fax: 310-265-4425
 Email: info@glsciencesinc.com
 Web: www.glsciencesinc.com

International Distributors

Visit our Website at www.glsciences.com/distributors