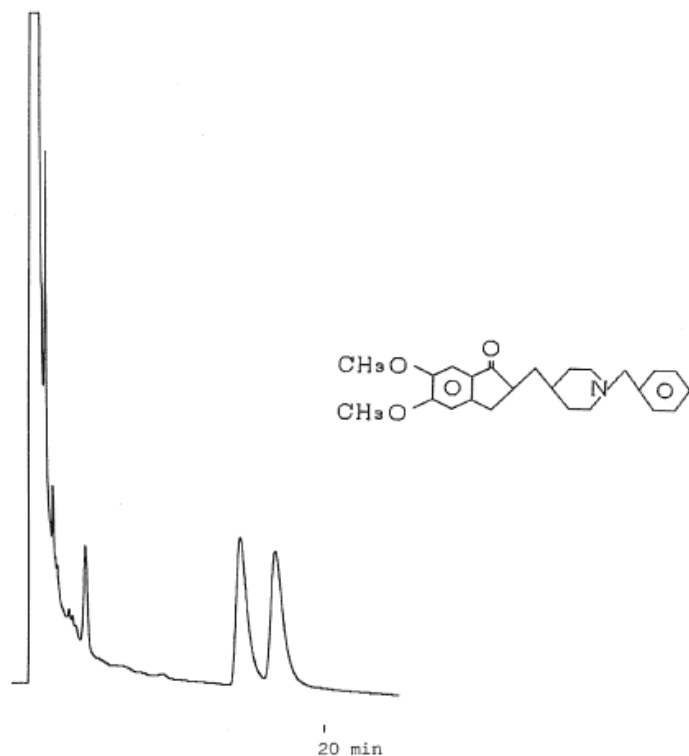


Donepezil hydrochloride in Plasma

Data No. LA362-0000



Column : Bioptic AV-1
5 μ m
150 \times 4.6 mm I.D.

Column Cat. No. :

Eluent : CH₃CN/0.1M K₂HPO₄(pH7.2 by H₃PO₄)=15/85

Flow rate : 1.0 mL/min.

Col. Temp. : 40°C

Detection : UV 210nm

Injection Vol. : 5 μ L

Sample : donepezil hydrochloride (E2020) (provided by Eisai Co.,Ltd.)0.6mg
in Coagulation Control Plasma 1mL

Solutes : E2020