



# RETAIL & GROCERY STORE CHECKLANES

---

SUPPLIER CATALOG



**[WWW.KPICONCEPTS.COM](http://WWW.KPICONCEPTS.COM)**





With more than 40 years of experience, KPI Concepts is a leading expert in producing B2B Solutions for businesses across the country.



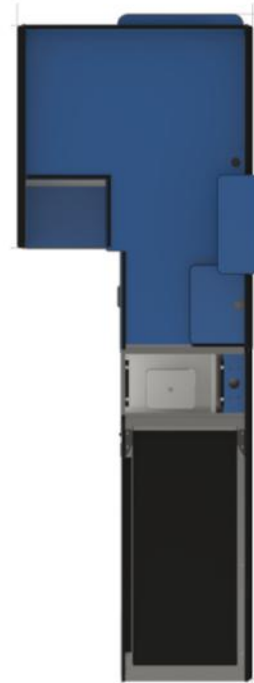
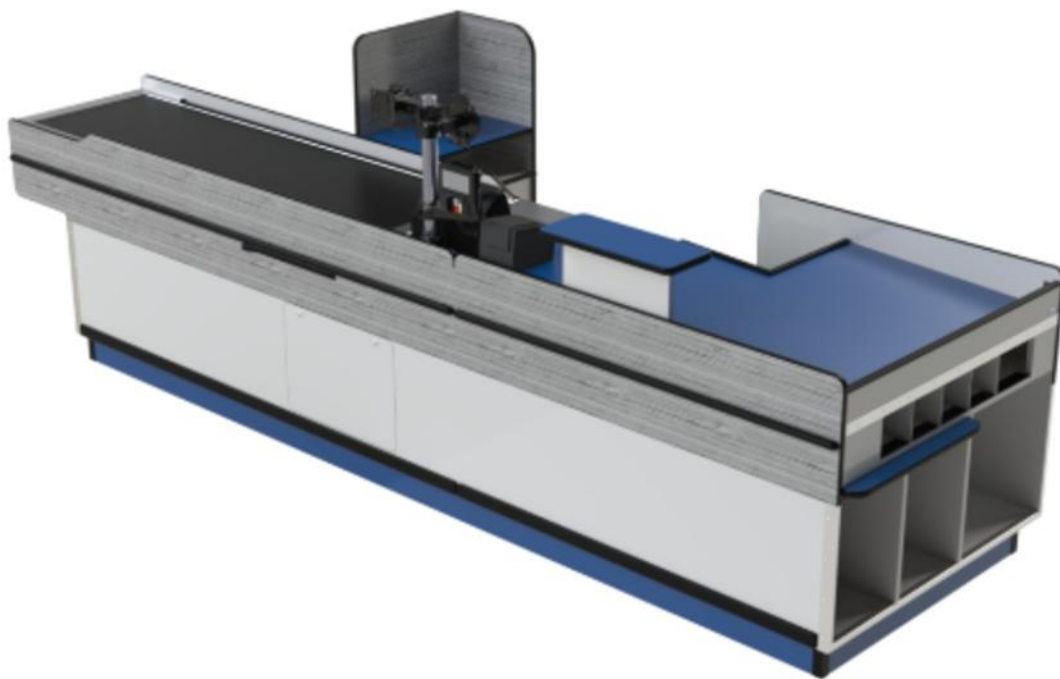
Our areas of expertise include:

- Store Fixtures
- Metal Fabrication
- Foam Composites

We work closely with our clients to transform their ideas into reality by delivering top-notch commercial solutions.



# SINGLE BELTED CHECKLANES



## CHECKLANE SIZE AVAILABILITY

### STANDARD SIZES:

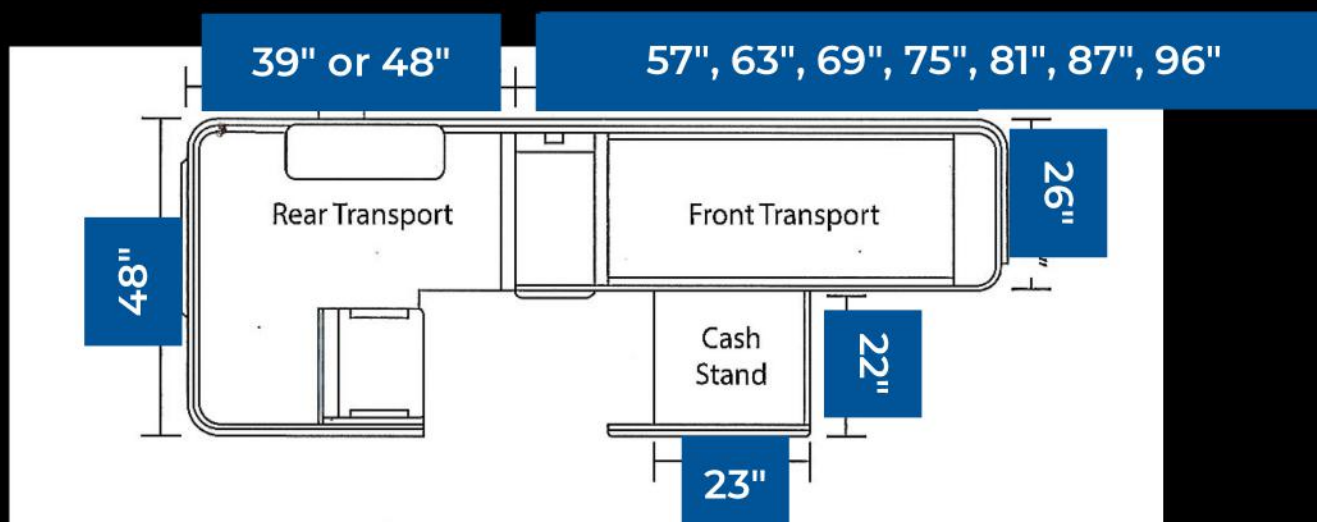
FRONT TRANSPORT - 57", 69", 96"

REAR TRANSPORT - 39", 48"

### SPECIALTY SIZES:

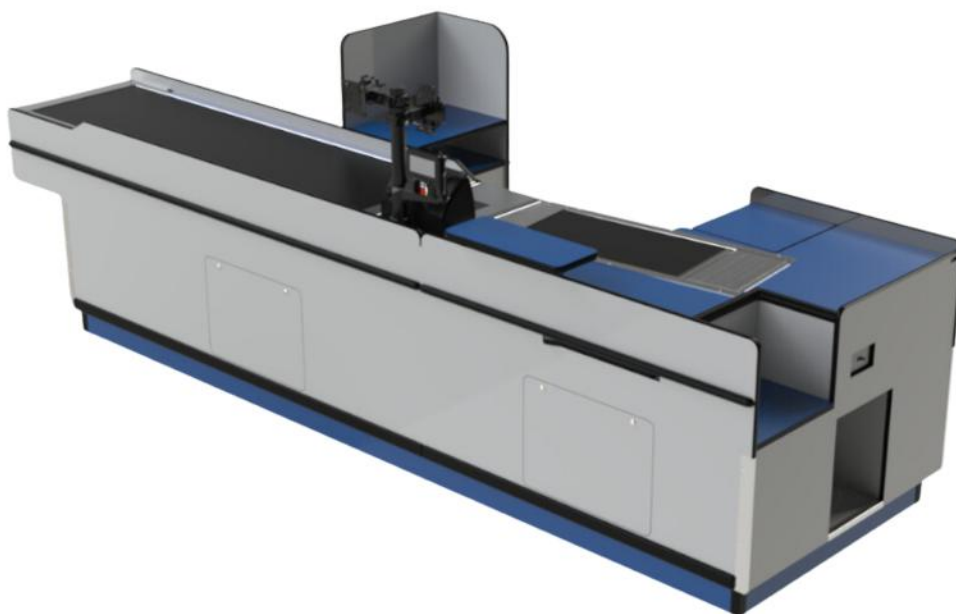
FRONT TRANSPORT - 63", 75", 81", 87"

*CUSTOM SIZES AVAILABLE. CALL FOR LEAD TIMES.*





# DOUBLE BELTED CHECKLANES



## CHECKLANE SIZE AVAILABILITY

### STANDARD SIZES:

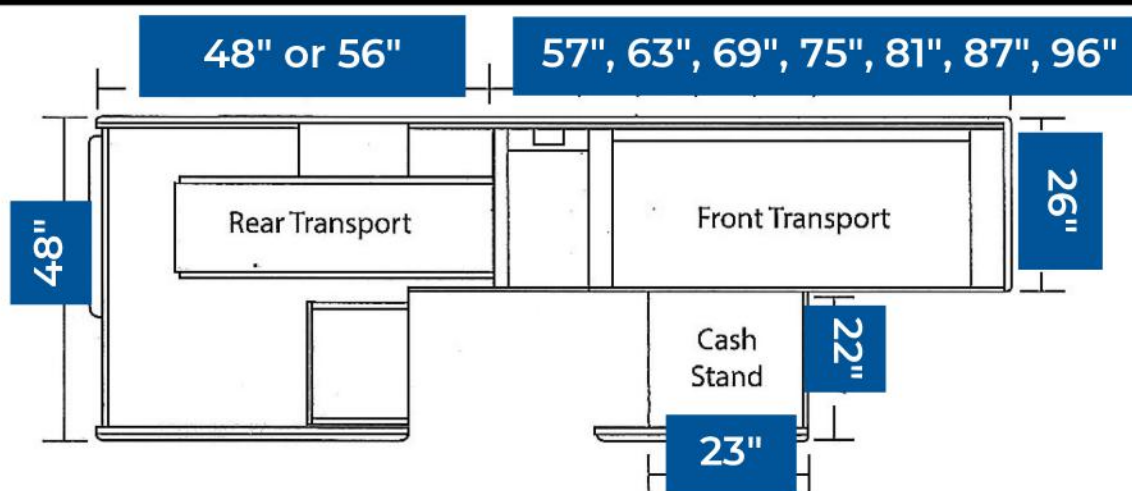
FRONT TRANSPORT - 57", 69", 96"

REAR TRANSPORT - 56"

### SPECIALTY SIZES:

FRONT TRANSPORT - 63", 75", 81", 87"

*CUSTOM SIZES AVAILABLE. CALL FOR LEAD TIMES.*



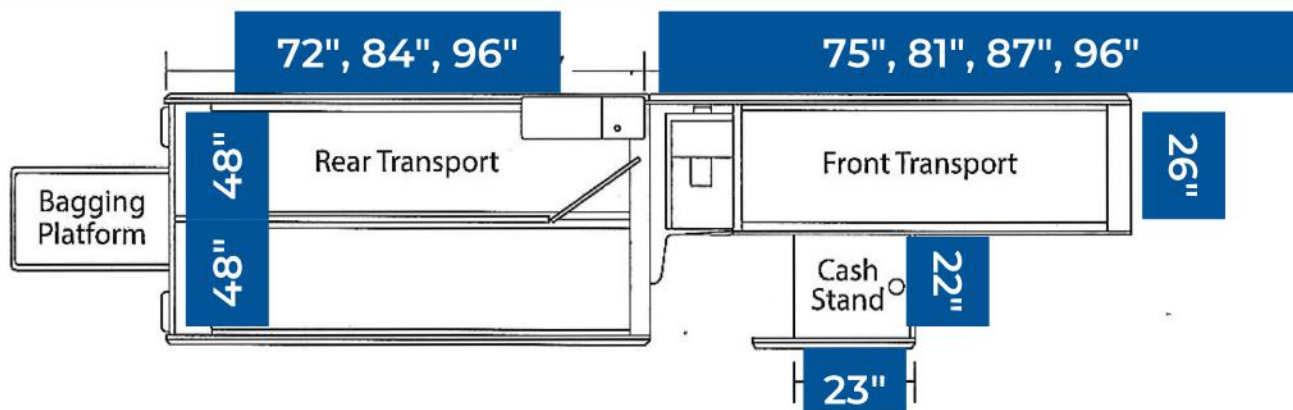
*Standard sizes are listed. Custom sizes are available and will be quoted when requested.*



## CHECKLANE SIZE AVAILABILITY

STANDARD SIZES LISTED.

*CUSTOM SIZES AVAILABLE. CALL FOR LEAD TIMES.*



# H-SHAPED CHECKLANES



## CHECKLANE SIZE AVAILABILITY

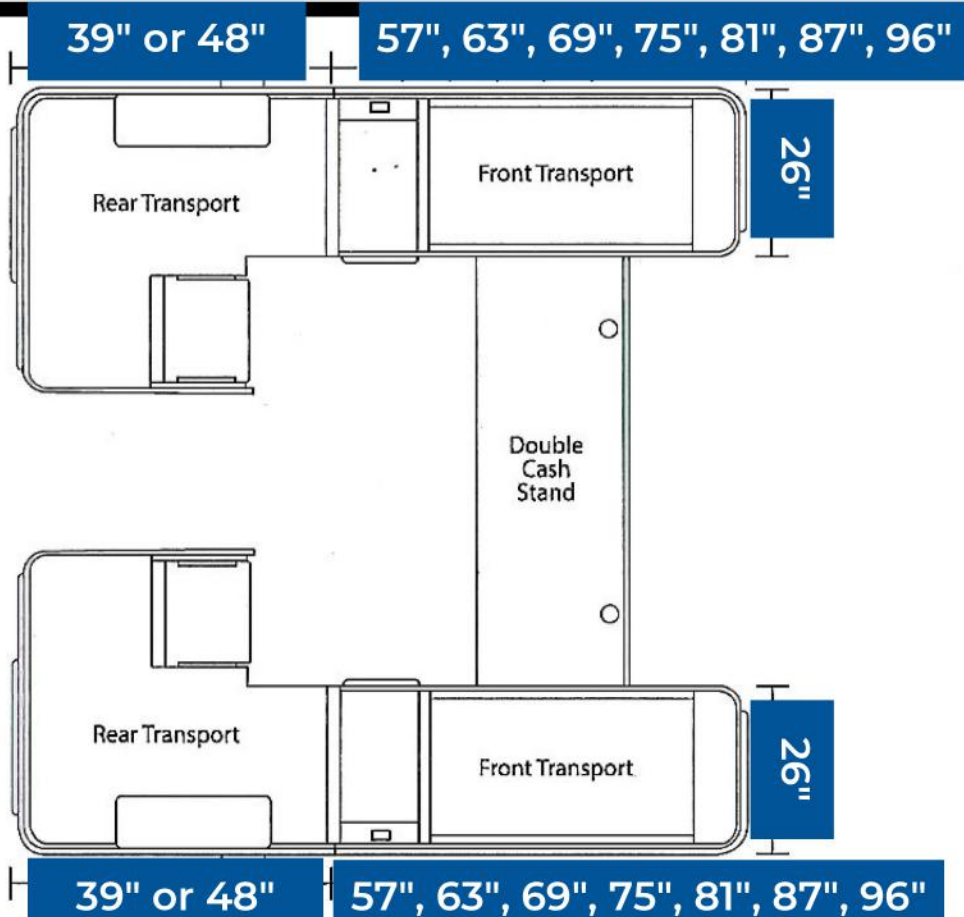
### STANDARD SIZES:

FRONT TRANSPORT - 57", 69", 96"  
REAR TRANSPORT - 39", 48"

### SPECIALTY SIZES:

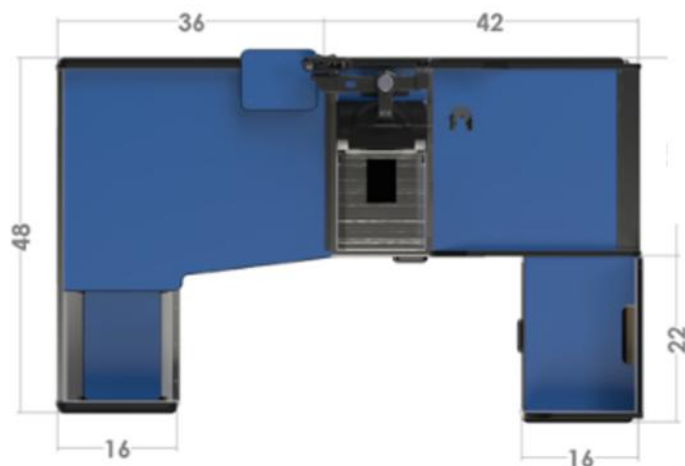
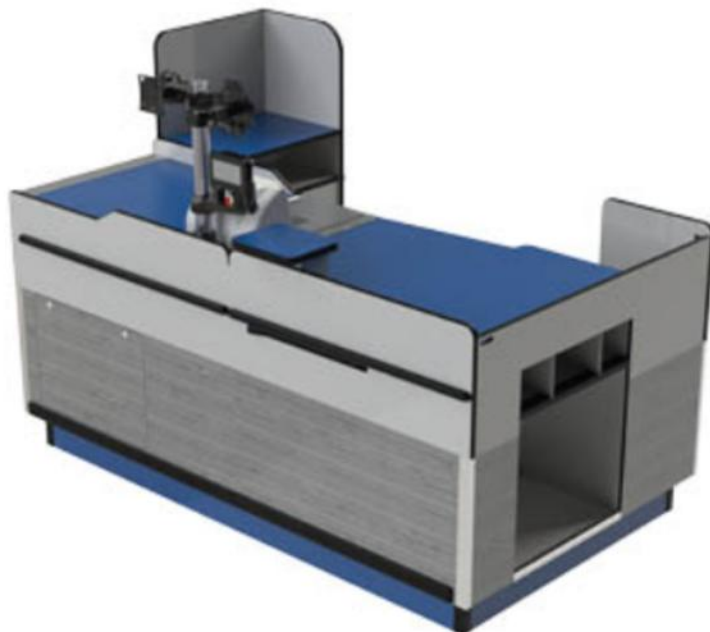
FRONT TRANSPORT - 63", 75", 81", 87"

*CUSTOM SIZES AVAILABLE. CALL FOR LEAD TIMES.*





# EXPRESS CHECKOUT LANES

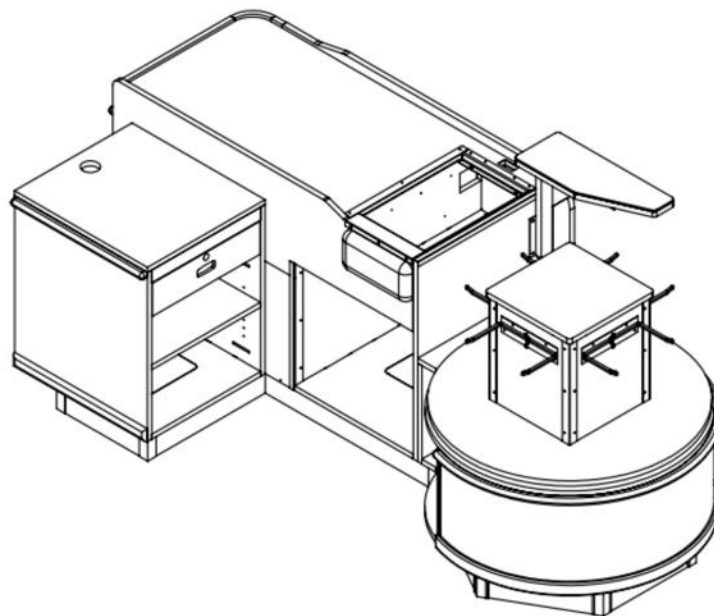


## CHECKLANE SIZE AVAILABILITY

STANDARD SIZES LISTED

*CUSTOM SIZES AVAILABLE. CALL FOR LEAD TIMES.*

# CAROUSEL CHECKOUT LANES



## STANDARD & CUSTOM SIZES

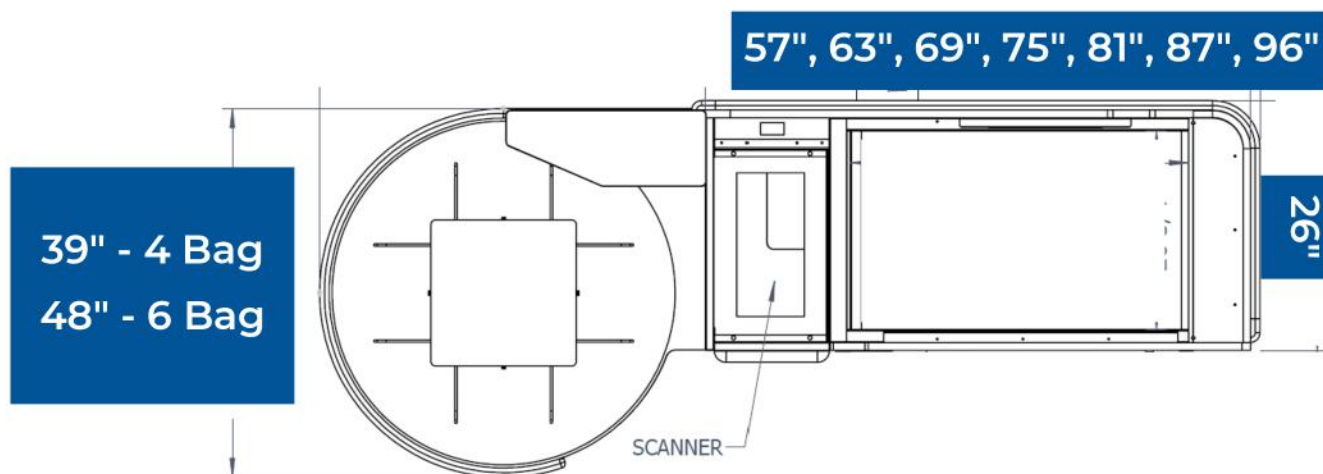
### QUICK SHIP STANDARD SIZES:

FRONT TRANSPORT - 57", 69", 96"  
4 BAG & 6 BAG OPTIONS

### SPECIALTY SIZES:

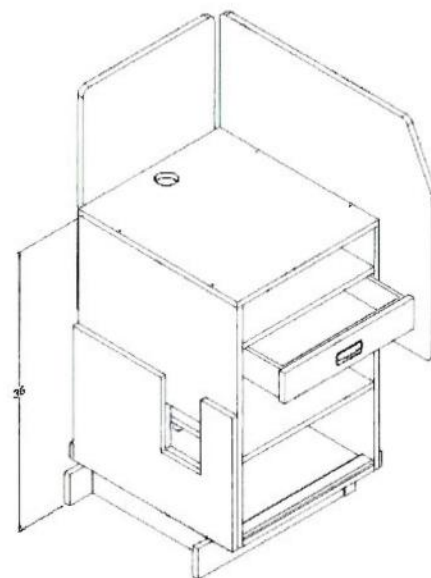
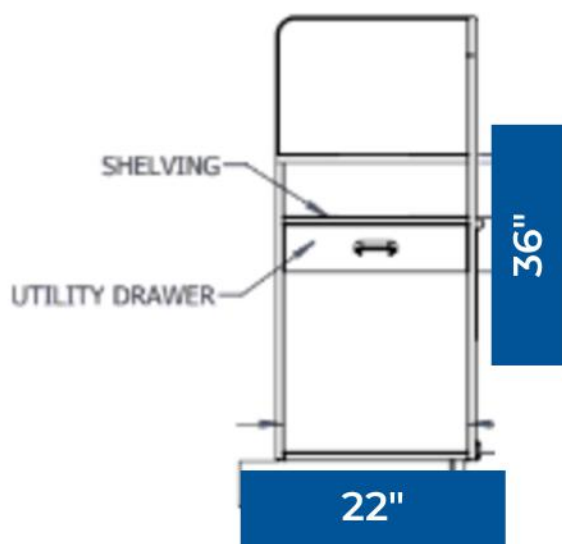
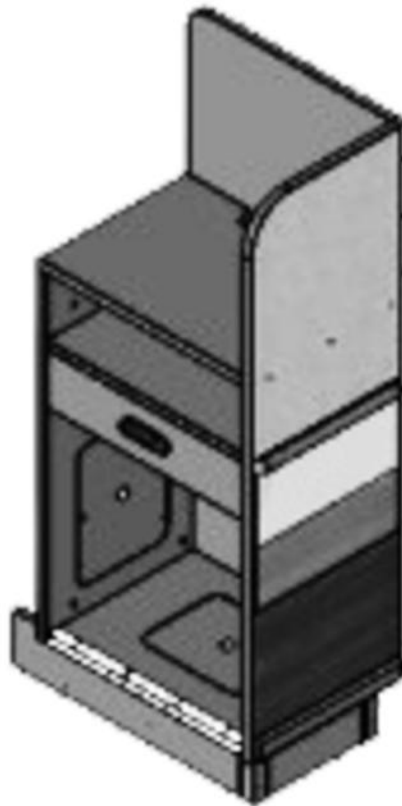
FRONT TRANSPORT - 63", 75", 81", 87"

*CUSTOM SIZES AVAILABLE. CALL FOR LEAD TIMES.*





# CASH STANDS



**STANDARD**  
Single Utility Drawer

# KPI CHECKLANES:

## STREAMLINE STORE CHECKOUT

### STANDARD FEATURES

- Bag Storage Baggers End
- Bag Storage in Checker Area (If Space Available)
- Bagging Well
- Cash Shield W/ Utility Drawer
- Cash Stand - Standard
- Check Writing Shelf 8"x 24"
- Choice of 2 Plastic Laminates
- Power Roll Drive with Overload Protection
- Rear Pullout Bag-board
- Upper & Lower Cart Protection

### ADDITIONAL OPTIONS:

- Extra Drawer or Coupon Drawer
- Extra Order Dividers
- Electrical Receptacle for Merchandiser
- Magnetic Aisle Closure Chain
- Cash Stand - Deluxe
- Product Diverter
- Large Checkwriter Shelf 8" x 30"
- Flip-top Bagwell
- Isolated Ground Circuit
- Utility Circuit
- Monitor/Readout Post(s)
- Keyboard Touchscreen EFT Pedestal
- Security Mirror
- Top Deck Bag Dispenser
- Exotic Deck Surface Material (example: Corian®)
- ADA Checkwriter
- Extra Row of Cart Bumper Protection
- Locks for Drawers
- Stainless Steel Deck

### ORDER OPTIONS:

- Standard Sizes Listed = **Faster Delivery**
- Standard Sizes + Options = **Potential Increase in Delivery Time**, Discuss With KPI Concepts
- Custom Sizes & Options = **Discuss Delivery Time** With KPI Concepts
- Metal Checklanes Available for Special Order

### MODEL AVAILABILITY:

- Traditional Design
- Contempo Design (rounded)

EVERY KPI CONCEPTS CHECKLANE IS BUILT WITH DURABLE MATERIALS, ERGONOMIC DESIGNS, AND SHOPPER-FRIENDLY FUNCTIONALITY. OUR STANDARD FEATURES ENSURE A SEAMLESS AND EFFICIENT CHECKOUT PROCESS.



# STANDARD LAMINATE & SOLID SURFACE COLOR OPTIONS

WE OFFER A VARIETY OF COLOR OPTIONS TO FIT EVERY STYLE, DESIGN & BRAND.

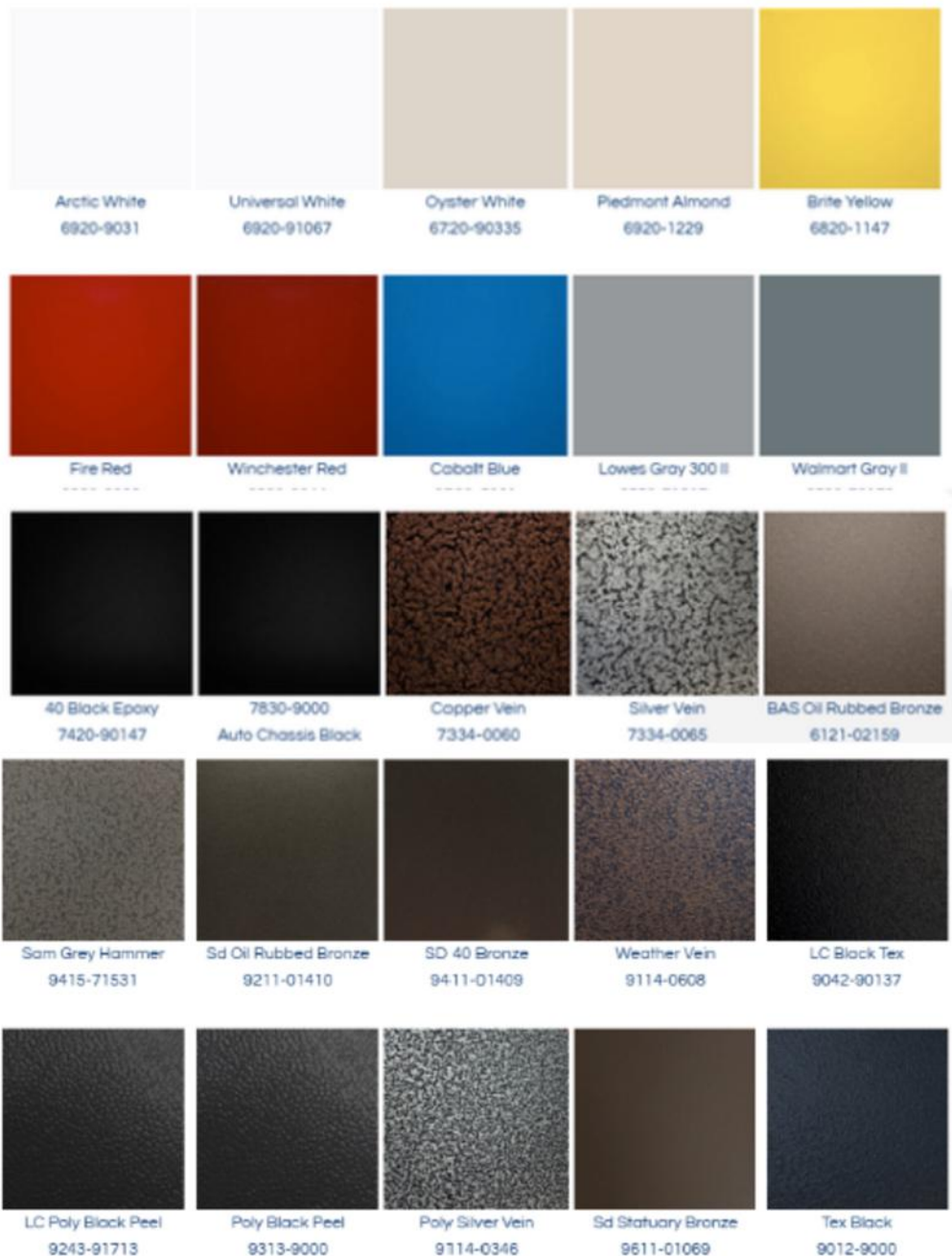


SEE MORE COLOR OPTIONS FROM OUR LAMINATE & SOLID SURFACE SUPPLY PARTNERS:

- FORMICA
- WILSON ART
- NEVAMAR



# METAL CHECKLANE POWDER COATED PAINT COLOR OPTIONS:



SEE MORE COLOR OPTIONS FROM  
OUR PAINT SUPPLY PARTNER:

- TCI





# INNOVATIVE CHECKLANES & STORE FIXTURES

- **40+ Years of Experience:** Trusted name in manufacturing high-quality store fixtures and checklanes since 1984.
- **Comprehensive Product Line:** Specializing in checklanes, retail displays, and store fixtures for grocery, retail, and convenience stores.
- **Tailored Solutions:** Collaborates with customers in research & development to design checklanes and fixtures that blend functionality with design.
- **Focus on Efficiency:** Checklanes crafted to streamline the checkout process, optimize space, and enhance customer satisfaction.
- **Sustainable & Adaptable:** Products designed for durability, sustainability, and seamless integration into any retail environment.
- **Independent Sales Coverage:** Extensive sales representation across the U.S. for personalized customer support.
- **Commitment to Quality:** Affordable, environmentally friendly, ADA-compliant fixtures built to the highest standards.
- **Proudly Made in the USA:** Durable, customizable solutions designed to meet the needs of high-traffic and compact store environments.
- **Customer Partnerships:** Provides custom solutions to help businesses grow and adapt to evolving needs.
- **Boost Retail Performance:** Fixtures that improve operational efficiency, enhance customer experience, and elevate store aesthetics.



## VIEW MORE STORE FIXTURES BY KPI CONCEPTS:

- [COMMERCIAL CABINETS](#)
- [GONDOLA](#)
- [LIGHTED DISPLAYS](#)
- [SHELVING](#)
- [AWNINGS](#)
- [COUNTERTOPS](#)



# STORE FIXTURES

BY KPI CONCEPTS

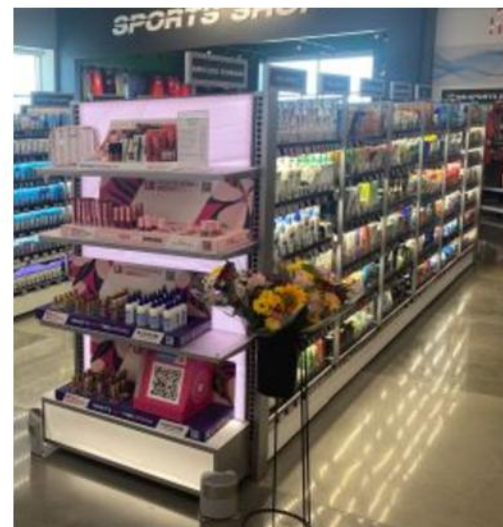


- **SHELVING**
- **PRODUCT DISPLAY RACKS**
- **GONDOLAS**
- **PRODUCT CASES & COUNTERS**
- **LIGHTED ENDCAP DISPLAY SHELVING**

- **COMMERCIAL CABINETS**
- **COUNTERTOPS**
- **BAKERY DISPLAY CASES**
- **PRODUCE STANDS**
- **CLOTHING DISPLAYS**



- **METAL CANOPIES**
  - **CAR WASH CANOPIES**
  - **ATM CANOPIES**
  - **DRIVE-THRU CANOPIES**
  - **STORE ENTERANCES**







MORE STORE FIXTURES AVAILABLE AT:  
[www.kpiconcepts.com](http://www.kpiconcepts.com)



REQUEST A QUOTE:  
[sales@kpiconcepts.com](mailto:sales@kpiconcepts.com)

1415 West Mt. Pleasant St.  
West Burlington, IA 52655

(319) 754-5922