



# RETAIL & GROCERY STORE CHECKLANES

SUPPLIER CATALOG



[WWW.KPICONCEPTS.COM](http://WWW.KPICONCEPTS.COM)

(319) 754-5922

[SALES@KPICONCEPTS.COM](mailto:SALES@KPICONCEPTS.COM)

KPI CONCEPTS



With more than 40 years of experience, KPI Concepts is a leading expert in producing B2B Solutions for businesses across the country.



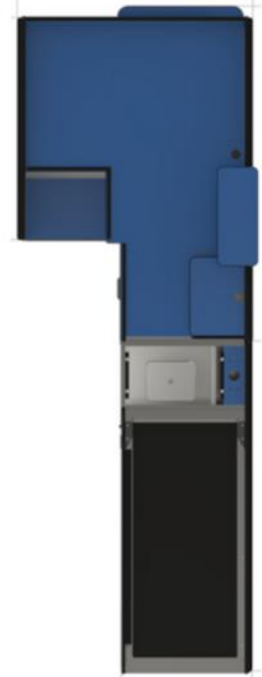
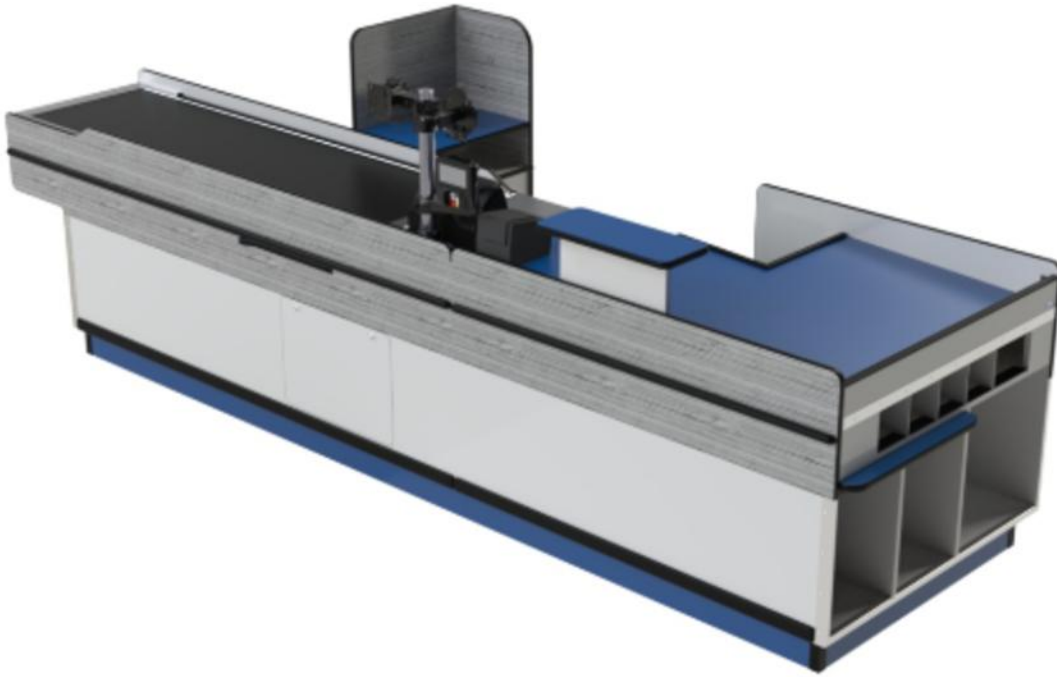
Our areas of expertise include:

- Store Fixtures
- Metal Fabrication
- Foam Composites

We work closely with our clients to transform their ideas into reality by delivering top-notch commercial solutions.



# SINGLE BELTED CHECKLANES



## CHECKLANE SIZE AVAILABILITY

### STANDARD SIZES:

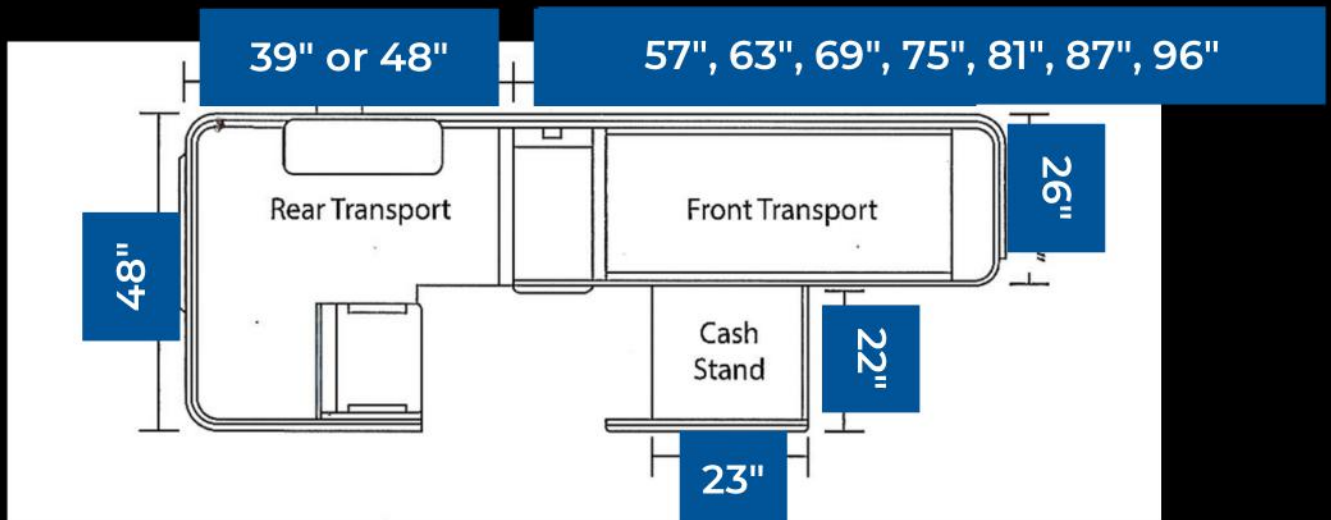
FRONT TRANSPORT - 57", 69", 96"

REAR TRANSPORT - 39", 48"

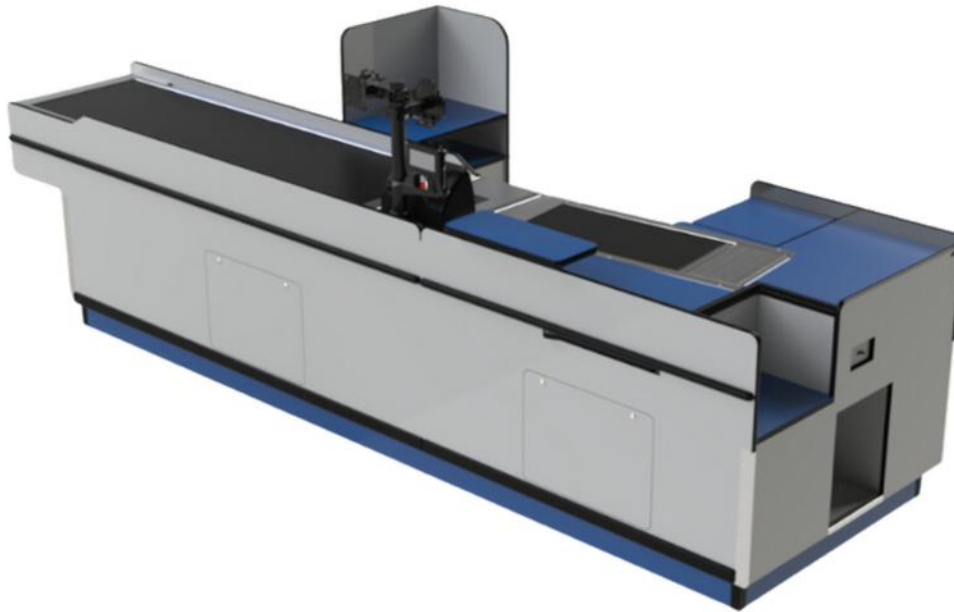
### SPECIALTY SIZES:

FRONT TRANSPORT - 63", 75", 81", 87"

*CUSTOM SIZES AVAILABLE. CALL FOR LEAD TIMES.*



# DOUBLE BELTED CHECKLANES



## CHECKLANE SIZE AVAILABILITY

### STANDARD SIZES:

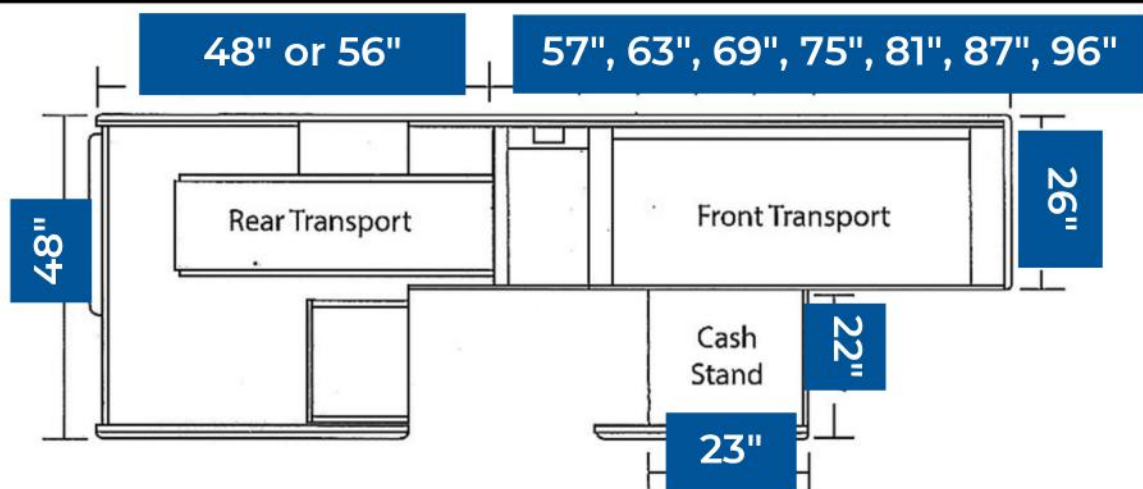
FRONT TRANSPORT - 57", 69", 96"

REAR TRANSPORT - 56"

### SPECIALTY SIZES:

FRONT TRANSPORT - 63", 75", 81", 87"

*CUSTOM SIZES AVAILABLE. CALL FOR LEAD TIMES.*



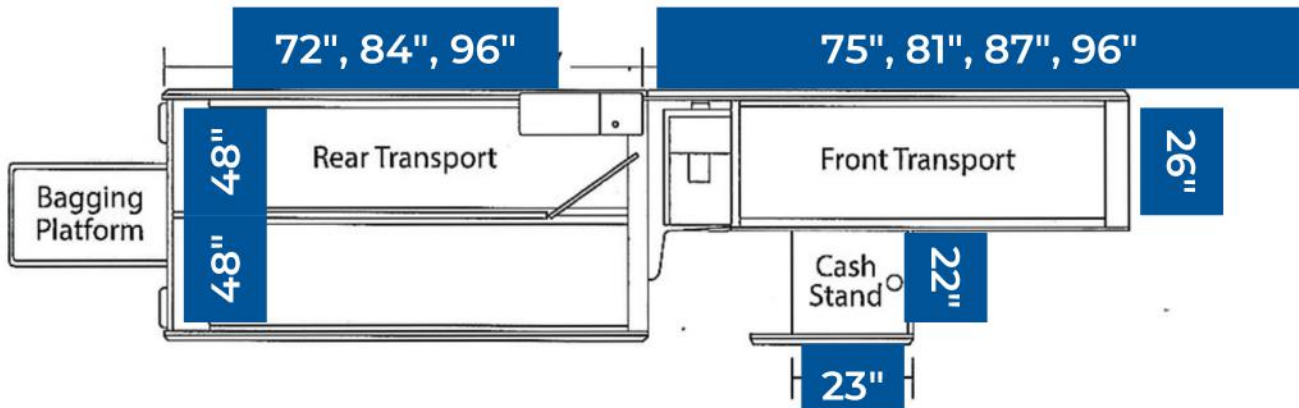
*Standard sizes are listed. Custom sizes are available and will be quoted when requested.*



## CHECKLANE SIZE AVAILABILITY

STANDARD SIZES LISTED.

*CUSTOM SIZES AVAILABLE. CALL FOR LEAD TIMES.*



# H-SHAPED CHECKLANES



## CHECKLANE SIZE AVAILABILITY

### STANDARD SIZES:

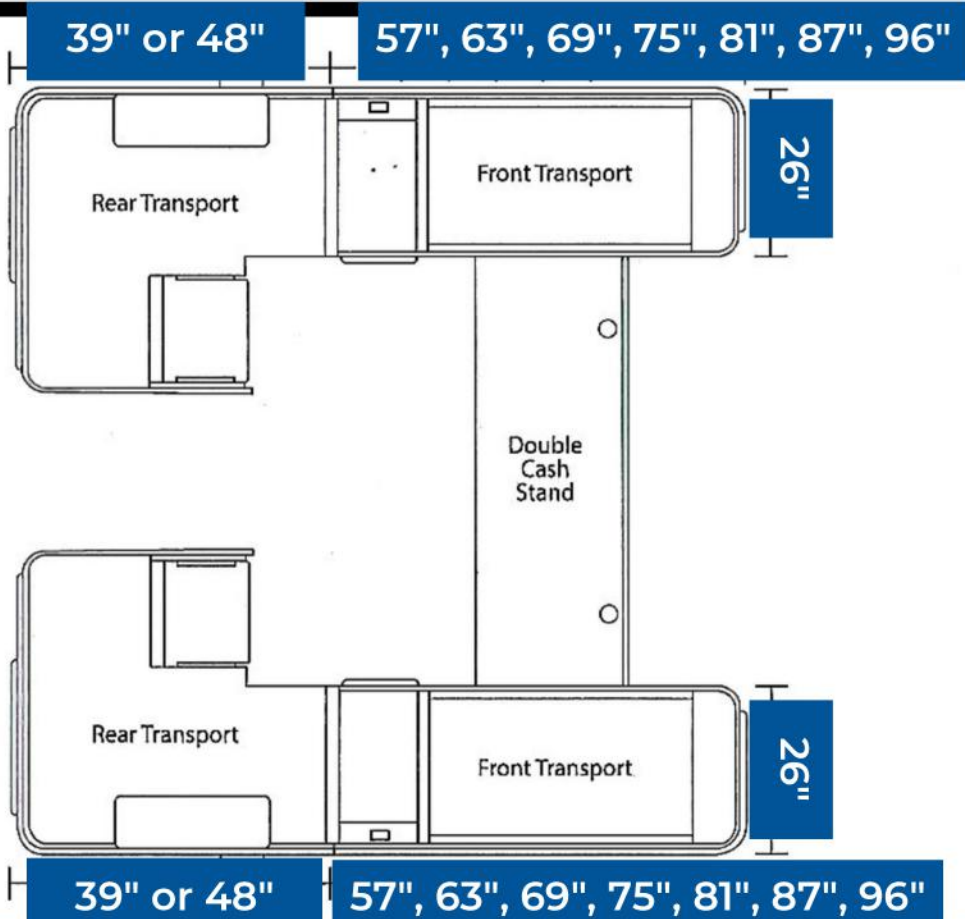
FRONT TRANSPORT - 57", 69", 96"

REAR TRANSPORT - 39", 48"

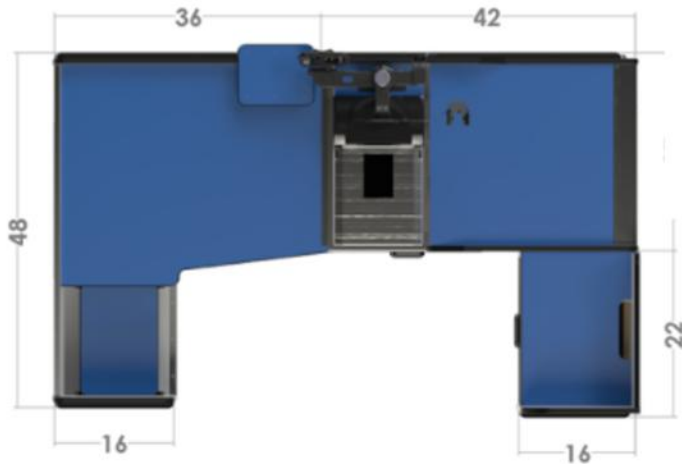
### SPECIALTY SIZES:

FRONT TRANSPORT - 63", 75", 81", 87"

*CUSTOM SIZES AVAILABLE. CALL FOR LEAD TIMES.*



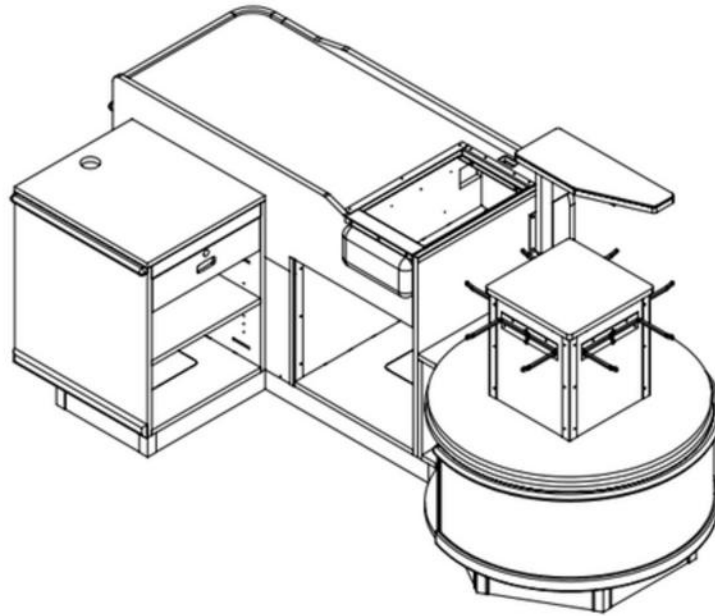
# EXPRESS CHECKOUT LANES



## CHECKLANE SIZE AVAILABILITY

STANDARD SIZES LISTED

*CUSTOM SIZES AVAILABLE. CALL FOR LEAD TIMES.*



## STANDARD & CUSTOM SIZES

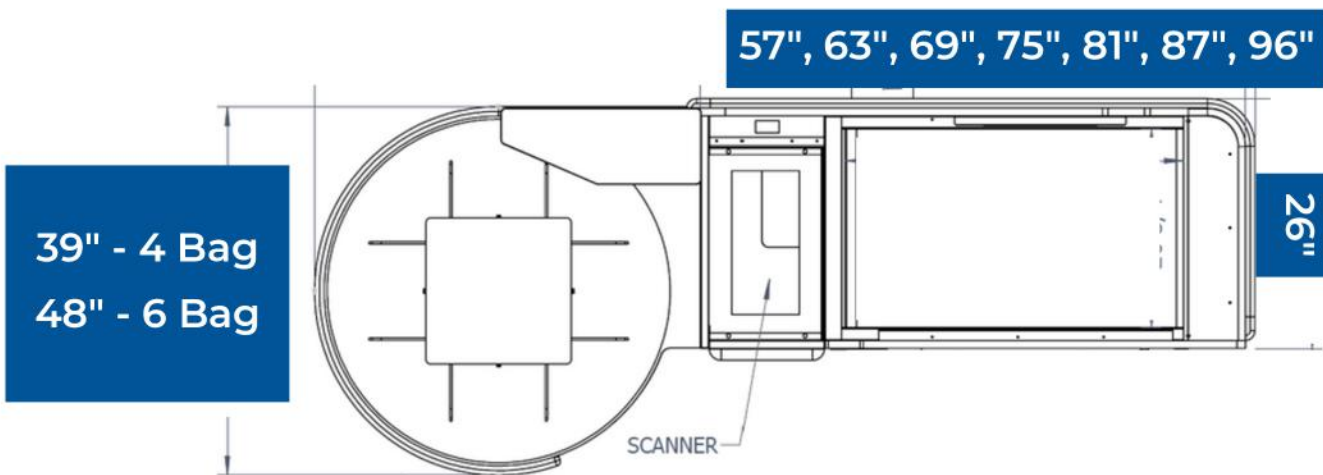
### QUICK SHIP STANDARD SIZES:

FRONT TRANSPORT - 57", 69", 96"  
4 BAG & 6 BAG OPTIONS

### SPECIALTY SIZES:

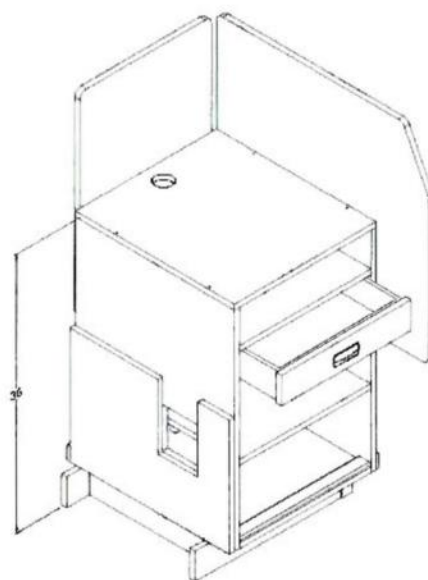
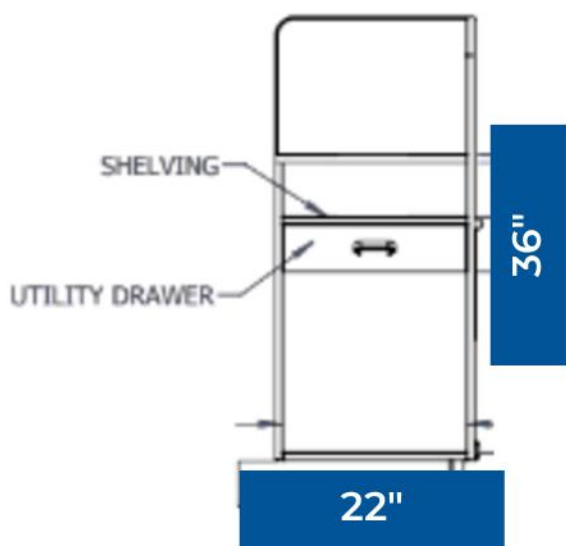
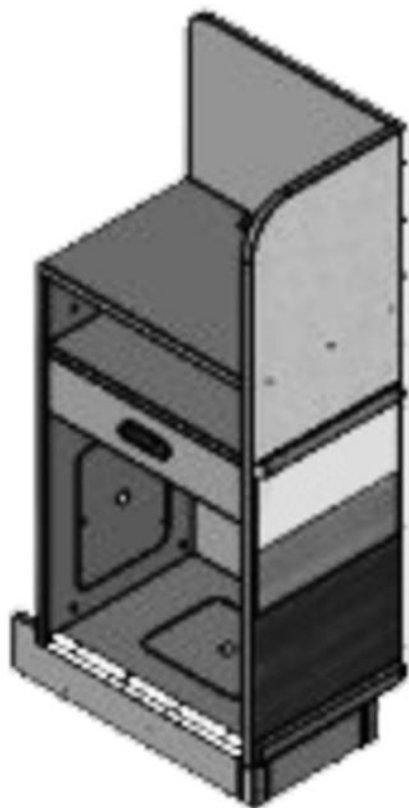
FRONT TRANSPORT - 63", 75", 81", 87"

*CUSTOM SIZES AVAILABLE. CALL FOR LEAD TIMES.*





# CASH STANDS



**STANDARD**  
Single Utility Drawer

# KPI CHECKLANES:

## STREAMLINE STORE CHECKOUT

### STANDARD FEATURES

- Bag Storage Baggers End
- Bag Storage in Checker Area (If Space Available)
- Bagging Well
- Cash Shield W/ Utility Drawer
- Cash Stand - Standard
- Check Writing Shelf 8"x 24"
- Choice of 2 Plastic Laminates
- Power Roll Drive with Overload Protection
- Rear Pullout Bag-board
- Upper & Lower Cart Protection

### ADDITIONAL OPTIONS:

- Extra Drawer or Coupon Drawer
- Extra Order Dividers
- Electrical Receptacle for Merchandiser
- Magnetic Aisle Closure Chain
- Cash Stand - Deluxe
- Product Diverter
- Large Checkwriter Shelf 8" x 30"
- Flip-top Bagwell
- Isolated Ground Circuit
- Utility Circuit
- Monitor/Readout Post(s)
- Keyboard Touchscreen EFT Pedestal
- Security Mirror
- Top Deck Bag Dispenser
- Exotic Deck Surface Material (example: Corian®)
- ADA Checkwriter
- Extra Row of Cart Bumper Protection
- Locks for Drawers
- Stainless Steel Deck

### ORDER OPTIONS:

- Standard Sizes Listed = **Faster Delivery**
- Standard Sizes + Options = **Potential Increase in Delivery Time**, Discuss With KPI Concepts
- Custom Sizes & Options = **Discuss Delivery Time** With KPI Concepts
- Metal Checklanes Available for Special Order

### MODEL AVAILABILITY:

- Traditional Design
- Contempo Design (rounded)

EVERY KPI CONCEPTS CHECKLANE IS BUILT WITH DURABLE MATERIALS, ERGONOMIC DESIGNS, AND SHOPPER-FRIENDLY FUNCTIONALITY. OUR STANDARD FEATURES ENSURE A SEAMLESS AND EFFICIENT CHECKOUT PROCESS.



# STANDARD LAMINATE COLOR OPTIONS

WE OFFER A VARIETY OF COLOR OPTIONS  
TO FIT EVERY STYLE, DESIGN & BRAND.



SEE MORE COLOR OPTIONS FROM OUR  
LAMINATE SUPPLY PARTNERS:

- FORMICA
- WILSON ART
- NEVAMAR

# METAL CHECKLANE PAINT

## COLOR OPTIONS:

### Powder Coat Paint Colors



Black  
18441



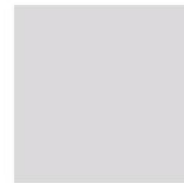
Statuary Bronze  
104208



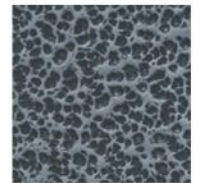
Storm  
104264



Royal Gray  
235309



Gray Ral  
49476



Lightning Vein  
Metallic 104716



Royal Blue  
105610T



Capitol Blue  
104063



Deep Teal  
104259



Fence Green  
89860



Hammertone  
Brown 105134



O.D. Brown  
83288



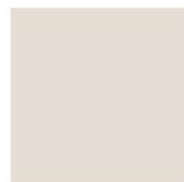
Putty Brown  
83289



Nevada Beige  
83633



Featherstone  
18442



Pearl Gray  
28267T



Light Beige  
104036



Tech White  
8362



White Vein  
230650



Port Red  
104041



International  
Red 83634



Retail Red  
83614

Colors may vary from samples shown.  
Please refer to actual paint samples for  
exact colors.



# INNOVATIVE CHECKLANES & STORE FIXTURES

- **40+ Years of Experience:** Trusted name in manufacturing high-quality store fixtures and checklanes since 1984.
- **Comprehensive Product Line:** Specializing in checklanes, retail displays, and store fixtures for grocery, retail, and convenience stores.
- **Tailored Solutions:** Collaborates with customers in research & development to design checklanes and fixtures that blend functionality with design.
- **Focus on Efficiency:** Checklanes crafted to streamline the checkout process, optimize space, and enhance customer satisfaction.
- **Sustainable & Adaptable:** Products designed for durability, sustainability, and seamless integration into any retail environment.
- **Independent Sales Coverage:** Extensive sales representation across the U.S. for personalized customer support.
- **Commitment to Quality:** Affordable, environmentally friendly, ADA-compliant fixtures built to the highest standards.
- **Proudly Made in the USA:** Durable, customizable solutions designed to meet the needs of high-traffic and compact store environments.
- **Customer Partnerships:** Provides custom solutions to help businesses grow and adapt to evolving needs.
- **Boost Retail Performance:** Fixtures that improve operational efficiency, enhance customer experience, and elevate store aesthetics.



## VIEW MORE STORE FIXTURES BY KPI CONCEPTS:

- [COMMERCIAL CABINETS](#)
- [GONDOLA](#)
- [LIGHTED DISPLAYS](#)
- [SHELVING](#)
- [AWNINGS](#)
- [COUNTERTOPS](#)

# STORE FIXTURES

BY KPI CONCEPTS

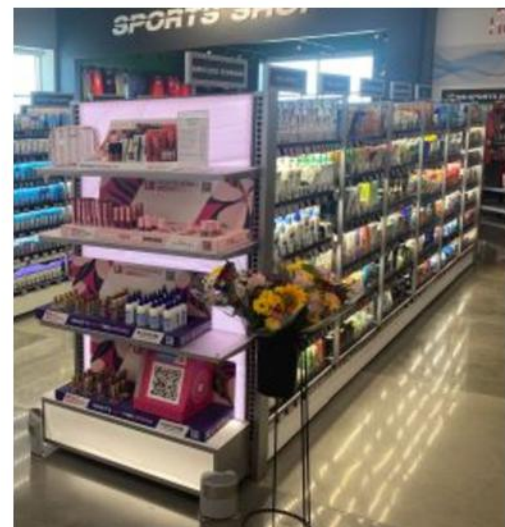


- **SHELVING**
- **PRODUCT DISPLAY RACKS**
- **GONDOLAS**
- **PRODUCT CASES & COUNTERS**
- **LIGHTED ENDCAP DISPLAY SHELVING**

- **COMMERCIAL CABINETS**
- **COUNTERTOPS**
- **BAKERY DISPLAY CASES**
- **PRODUCE STANDS**
- **CLOTHING DISPLAYS**



- **METAL CANOPIES**
  - **CAR WASH CANOPIES**
  - **ATM CANOPIES**
  - **DRIVE-THRU CANOPIES**
  - **STORE ENTERANCES**





MORE STORE FIXTURES AVAILABLE AT:  
[www.kpiconcepts.com](http://www.kpiconcepts.com)



REQUEST A QUOTE:  
[sales@kpiconcepts.com](mailto:sales@kpiconcepts.com)

1415 West Mt. Pleasant St.  
West Burlington, IA 52655

(319) 754-5922