

SHALOM

GREENSBORO

**MENTORING
MATTERS**
IN OUR COMMUNITY



**From the
Campaign Trail**
Strength
in Diversity **p3**

**A Tradition
of Giving**
Spotlight on
Phyllis Shavitz **p10**



THE GREENSBORO JEWISH FEDERATION PRESENTS:

Triad Jewish Film Festival

A community series celebrating Jewish film

ticket prices:

- \$60 REEL DEAL 6 Film PASS
- \$11 ORDER IN ADVANCE
- \$12 AT THE DOOR
- \$6 STUDENT DISCOUNT

FEBRUARY 9-20, 2019
RED CINEMAS, Battleground Avenue

thank you

TO OUR SPONSORS WHO MAKE THIS FESTIVAL POSSIBLE

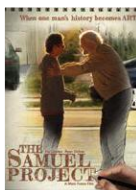


LOCK STOCK AND BAGEL

THE REED FAMILY

"There's a beauty to art and film, which offers us a new perspective. New perspectives create ideas and drive solutions for good. We need more good." - Jared Farber

All films will be shown at **RED CINEMAS**
 and All films are included in the
\$60 reel deal package



Presented by Andrew Bowen Photography

SATURDAY, FEBRUARY 9
7:30 p.m.

The samuel project



SUNDAY, FEBRUARY 10
4:30 p.m.

Heading Home: The Tale of Team Israel



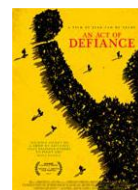
WEDNESDAY, FEBRUARY 13
7:30 p.m.

My German Friend



SATURDAY, FEBRUARY 16
7:30 p.m.

The cake maker



SUNDAY, FEBRUARY 17
4:30 p.m.

An Act of defiance



WEDNESDAY, FEBRUARY 20
7:30 p.m.

wendy's shabbat



HUMOR ME

order tickets online: MYTJFF.COM • or call: 336.852.5433

#MYTJFF #GREENSBOROFED #JEWISHFILMFESTIVAL

Shalom Y'all!



Welcome to the premier issue of ***Shalom Greensboro Magazine***.

Inside, you'll find updates on events and programs, stories focused on how you can be involved in the Greensboro Jewish community and information that is most relevant in your life. The new feature articles will highlight current events and people that are making a difference in the Jewish community.

Volunteers and staff have created this new experience for our readers with the intent to create a publication that you will want to leave out and read over time. We would appreciate your feedback on what you think is working well and what isn't. Please contact us at magazine@shalomgreensboro.org with your comments.

Our team is excited to share this first issue. We hope you enjoy reading the new Shalom Greensboro as much as we enjoyed creating it.

The Marketing Committee



IGNITE INAUGURAL EVENT

Inspires Business Professionals in the Jewish Community



Led by David Altman, COO of the Center for Creative Leadership, business leaders enjoyed a dynamic program in December that focused on leadership development as explored through conversation, connection and shared experiences. Participants agreed that it was a chance to reflect on leadership qualities and identify areas of connection with other leaders, all through a Jewish Lens.

The new affinity program is designed for business leaders and professionals in the Greensboro Jewish community. Elizabeth Bader, chair, indicates that exciting new programming will be offered this year.

ON MY MIND:

FEDERATION TAKES A PROACTIVE ROLE in securing safety for our Jewish community.

By Marilyn Forman Chandler, *Executive Director*



Marilyn Forman
Chandler

In late November, following the attack on the Tree of Life * Or L'Simcha Synagogue in Pittsburgh, our Federation immediately began taking action to enhance safety for our entire Jewish community. We convened 35 Jewish community agency and organizational representatives for a briefing with the City of Greensboro Police Department (GPD) to discuss and plan for comprehensive security assessments that will be conducted by the Department of Homeland Security for all of our Jewish community institutional facilities; including, on-site staff training for preparation in case of emergencies, hiring security for events, and how best to contact the police. Assessments and training will begin in 2019. We have also been in contact with SCN, the Secure Community Network of the Federations which offers support and assistance to Federations to enhance the safety and security of our communities.

In December, Federation President Sue Simmons and I embarked on creating open communication and partnerships with City Council members by meeting them in small groups to provide an overview of the Greensboro Jewish community, the Leadership Roundtable [composed of representatives from all Jewish community institutions and organizations], and our Federation's relationship to other communities through the national JFNA system and global Jewish community. We spoke with Council members about Pittsburgh, anti-Semitic incidents in and around Greensboro and North Carolina, security needs and our recent meeting with the GPD.

Our city officials and law enforcement agencies have been very grateful for our Federation's leadership role in convening our community and in taking a proactive role in making necessary changes to enhance security for our constituents. Subtle and significant changes have already been made and more enhancements are on the way. Some of our institutions have been able to secure federal grants for security equipment due to the diligent work of the Jewish Federations of North America Washington, DC office. We will be researching other available grants and alternative funding sources for security improvements.

Through information sharing, security awareness, training and security consultation, your Federation strives to empower individuals and organizations in establishing a culture of security awareness, preparedness and resiliency throughout our Jewish communities. Federation is committed to securing a thriving Jewish community.

“Federation is committed to securing a thriving Jewish community.”



336.852.5433

Marilyn Forman Chandler
Executive Director

Sue Simmons
President, Board of Trustees



336.852.0099

Susan R. Gutterman
Endowment Director

Freddy Robinson
Jewish Foundation of Greensboro Chair



336.852.4829

Betsy Gamburg
Jewish Family Services Director

Rachel Villalba
Jewish Family Services Chair



PRODUCTION TEAM

Judi Rossabi
Communications and
Corporate Partnership Manager

Dena Kovach
Design Editor and
Creative Visuals Coordinator

Jenny Kaiser
Contributing Editor

Nat Bernstein, Hillary Zaken
Contributing Writers

Cover photography courtesy of
Andrew Bowen Photography.
Photo location provided by
HQ Greensboro.

Shalom Greensboro is a publication of the Greensboro Jewish Federation, 5509-C West Friendly Avenue, Greensboro, NC 27410-4211. The publication provides information and news about the Greensboro Jewish community. Please submit articles to magazine@shalomgreensboro.org. *Shalom Greensboro* is published in print and online. The online version can be found at www.shalomgreensboro.org.

FROM THE CAMPAIGN TRAIL: STRENGTH IN DIVERSITY



Erica Procton

Although small in number, our Greensboro Jewish community is a very diverse group. Some families have lived here for many generations, while others just arrived. We are Northerners, Southerners, immigrants from other countries; young, old and somewhere in between. This diversity is one of our community's biggest strengths. When we welcome and encourage more people to become involved and

learn more about the Federation, we build for the future by not only broadening our volunteer base, but also our financial stability as well. Our diversity is a gift.

One example of the benefits of this added strength is the under-40 demographic. The more involved I've become at the Greensboro Jewish Federation, the more impressed I am with the generation of young people who are taking on all kinds of leadership responsibilities. Thanks to Greensboro Federation Leadership Institute, a program designed to engage the next generation of the Greensboro Jewish community, young people have stepped into many important roles this year including division leaders of the Women's Campaign, co-chair of the January 16th Kickoff event, February 3rd's Super Sunday Telethon co-chairs and, most impressively Raffi Simel, my 30-year old co-chair of the Annual Campaign.

In addition, this fall, seventeen young mothers took part in the Jewish Women's Renaissance Project's mission to Israel and another group of young women has become more involved with the Federation through

the expansion of the Women's Philanthropy Council into the broader-ranging Women's Philanthropy Collective, a group charged with planning non-campaign events that focus on "friend-raising" rather than fundraising, making sure our community is inclusive and welcoming to all. These Jewish leaders are all dedicated, intelligent, giving and committed to making a difference in our Jewish community.

For a community like ours to not only survive, but to thrive, this next generation of leaders is so important. They bring energy, optimism, cultural differences and intellectual curiosity and will set us up for continued financial sustainability in the future. By supporting the Federation, you're not only supporting so many necessary programs and services at home and around the world, you are also encouraging and investing in the future leadership of our community and ensuring our legacy will be in good hands. So please, make plans to come to the Kickoff on January 16th to hear the inspiring words of Rabbi Sharon Brous; answer the phone on February 3rd when the telethon volunteers call, and do what you can to support the efforts of this new generation — and all generations — to ensure that our Federation can continue to successfully support all the programs and initiatives in the years to come.

“These Jewish leaders are all dedicated, intelligent, giving and committed to making a difference in our Jewish community.”



2019 CAMPAIGN KICKOFF

Setting the Stage

Wednesday, January 16 at 6 p.m.

Carolina Theatre • 310 S. Greene St. in Greensboro

Featuring Rabbi Sharon Brous, a leading voice in reanimating your religious life

>> Catering by 1618 Concepts • Valet Parking Available
>> Cost: \$54/person • \$36/JTriad

>> Tickets are available by contacting Dianne Hines (336) 852-5433 x233
dhines@shalomgreensboro.org or at shalomgreensboro.org



HEALING IN NEW BERN

Hurricane Florence may seem like a distant memory for many, but for the Jewish community in New Bern it continues to pose problems. Some individuals have not yet returned to their homes, and some still have repair work to be done. To show support and solidarity with the Jewish community, JFS traveled in early December to Temple B'nai Sholem in New Bern to host a Kiddush lunch and to participate with them in Shabbat morning services.

Even before the hurricane, JFS had numerous conversations with Carla Byrnes, president of this small but vital congregation, to offer support. JFS Director Betsy Gamburg, Volunteer Coordinator David Frazier, volunteers Lorie Heimann and Larry Arnold, and Wendee Cutler, Executive Director of BJH Foundation for Senior Services traveled to New Bern to visit. Rabbi Phil Cohen also volunteered with JFS to conduct services for the congregation which has no rabbi and relies on knowledgeable congregants for leadership.

Congregants expressed appreciation for lunch, the rabbinical presence and discussion on the Torah, the written greetings from Marilyn Chandler, Executive Director of the Federation, and for the words from Betsy Gamburg who emphasized that despite the disasters and headlines that claimed attention this year, the residents of this Jewish community have not been forgotten.

Congregants shared their stories about the hurricane and expressed appreciation for efforts to make Shabbat a special and memorable experience. JFS hopes that the New Bern community will carry warm memories of this visit as they continue to recover from Hurricane Florence.



CHAI NOTES

Chanukah Parties

JFS Chai Notes conducted Chanukah parties at five local senior facilities. At Well•Spring third and fourth graders from B'nai Shalom Day School performed holiday songs. Katy Claussen, Chai Notes Program Specialist, led the students and older adults in a Chanukah activity focused on identifying acts of courage. The Chanukah party at Abbotswood featured music and refreshments. Parents who attended expressed appreciation for the opportunity for children to share a Chanukah experience with the older adults.

JFS PARENTING PROGRAMS:

Explore Jewish values, share a “mindful” meal, and learn what Judaism has to say regarding gender issues

Jewish Family Services Children and Family Programming will host three parent education events in the new year with the goal of promoting the well-being of all families in our community through education, resources and support grounded in Jewish values.

Monday, January 7, from 7 to 8:30 p.m.

JFS will host **Foundations of Jewish Values**. This event is geared towards parents of school age children and is co-sponsored by B’nai Shalom Day School and The Early Childhood Engagement Center at Temple Emanuel. Amy Whitfield, yoga and mindfulness instructor at Radiance Yoga, will lead an opening mindfulness exercise which will be followed by a discussion, led by Susan Siegel, Louise Van Schaack, and Jenny Schultz, on three core Jewish values.

Discussions will be enjoyed over coffee and dessert. Take home a thirty-day mitzvah action plan and guidelines for peaceful interactions in the home. No prior knowledge is necessary.

Tuesday, January 29, from 7 to 8:30 p.m.

JFS presents **Mindful Meals**. Concerned about your family’s eating habits? Rima Kleiner, a registered dietician and nutrition communications consultant, will guide

attendees through local sustainable foods and food prep ideas that involve that whole family. Andra LeBauer, an integrative health coach with a focus on mindfulness, will lead a mindful eating exercise that can be used to counter our fast paced lives. Connections will be made over a communal meal, so come hungry!

Monday, February 11, from 7 to 8:30 p.m.

Rabbi Sandra Lawson and Josh Orol will present **Expanding Torah: Faith and LGBTQ Issues**. Our speakers will share their personal journeys and the impact of Judaism in their lives. Rabbi Sandra Lawson is the Associate Chaplain for Jewish Life and Jewish Educator at Elon University, and received her ordination from the Reconstructionist Rabbinical College in 2018. Josh Orol is the Programs Coordinator at Beth Meyer Synagogue in Raleigh and is a preschool music teacher and song leader at Camp JCC. Josh has an MFA in Creative Writing from NC State.

Programs are held at the Federation Building, offered at no charge and open to all. To reserve a space, contact Jenny Schultz at (336) 852-4829 x235 or email jschultz@shalomgreensboro.org.

TODAH RABAH

We thank the following people for their contributions to Jewish Family Services. All contributions to JFS are used to support JFS programs and services and those in our community unless otherwise specified by the donor.

JEWISH FAMILY SERVICES

Jill and Richard Auslander
Freddie Neiditz
Ellen and Lenny Samet
Helene Weinstein

In Memory:

Of: Aron Katz
From: Natalie Mapou

VAN FUND

Jane Rosen-Grandon
Vivian Rosen

We apologize if we have missed anyone’s contribution. Please call Jewish Family Services at 852-4829, x222 if we missed you, and we will include you in the next issue. The minimum donation for each submission is \$10. Thank you.

RUSSIAN ESL CHANUKAH PARTY

The Russian ESL Class, along with JFS staff, enjoyed a wonderful Chanukah party featuring traditional Russian foods and latkes made by members. Rabbi Guttman joined in the celebration and shared stories that brought new meaning to the holiday as he discussed the “lights” of life and the hanukiah.



MOMENTUM TRIP: A Spiritual Journey to Israel

In November, Jewish mothers from Greensboro experienced a whirlwind eight day trip to Israel with the Jewish Women's Renaissance Project. The mission of the MOMentum trip was to not just tour Israel, but to offer women the chance to connect with the land, Jewish values and with each other.

From the bustling city of Tel Aviv to the artsy mountain town of Tsfat and the Old City of Jerusalem, attendees experienced a country rich in culture and history. Several women commented on how easy it is to be Jewish in Israel, with traditions and customs ingrained in daily life. Many were moved to bring some of those practices back home with them, including plans for regular Shabbat gatherings. The women developed, each in their own way, a stronger sense of self identity as Jewish women and mothers, and were given tools that will help them raise healthy and thriving Jewish families.

"The most profound experience was the deep relationships that we formed with each other," said trip attendee Carly Dunno. "It is truly remarkable how close we got in such a short period of time. Through this experience, we developed a stronger appreciation and connection to the Greensboro Jewish community. That realization has motivated many of us to become more active and engaged in the community."



Top Row: Michelle Hoffman, Kris Aronson, Ashley Garcia, Andra LeBauer, Jessica Wisniewski, Alyssa Samet, Sarah Schoultz, Michelle Lunney, Barbara Osborne, Sarah Neff **Bottom Row:** Carly Dunno, Kris Aronson, Danielle Swick, Becky Spielman, Emily Gray, Rachel Villalba, Rima Kleiner

Women's Philanthropy Collective
Presents

OPENING HEARTS & MINDS: Coffee, Chocolate, & Interfaith Conversations



Thursday, February 7
7 - 8:30 p.m.

Scuppernong Books

Simply social—Bring a friend—Open to all



Well-Spring

A LIFE PLAN COMMUNITY

A wellspring is an abundant source. And that's what life here feels like — an abundant source of opportunities for growth, engagement, connection, and yes, fun. As a Life Plan Community, Well•Spring offers not only a maintenance-free lifestyle, but also security and peace of mind for the future — which means you're free to do all the things you love. Now *that* sounds like fun!

Start today — call us at **336•265•1516** or
visit our website at **Well-Spring.org**



MENTORS MATTER: GFLI Connects the Next Generation of Leaders



Sam Cone (r) with mentor Tom Sloan
Photo courtesy of Andrew Bowen Photography

The Greensboro Federation Leadership Institute (GFLI), designed to engage the next generation of Greensboro's Jewish community, is taking on the challenge of finding tomorrow's leaders. The program approaches leadership development through a Jewish lens providing individuals the opportunity to grow their leadership skills and expand their Jewish knowledge.



Laura Hausman (l) with mentor Gail LeBauer

GFLI takes Young Leadership to the next level by pairing the "Fellows" with experienced leaders, many of whom participated in Young Leadership themselves.

Tom Sloan was part of the first young leadership program in 1972, along with his wife Linda. Today he's part of the first GFLI mentor class, mentoring Fellow Sam Cone.

"I think that Greensboro Jewish Federation has been a great environment for young folks to observe and learn organizational leadership. You learn how the

committee structure works, how the Board works and how to manage projects as part of the community organization," says Sloan.

Gail LeBauer, another graduate of the 1972 YL class, also applied to be part of the program.

"Coming to live in Greensboro as a Jewish person was NOT what I had in mind," remembers LeBauer. Shortly after she arrived the Federation started the first Young Leadership program. There, she formed friendships, passions for Israel and a commitment to learning about and participating in the growth of the community.

Sam Cone grew up with both of his parents taking leadership roles in the Jewish and in the broader community. "GFLI was an opportunity for me to learn how to be a better leader and make connections with people who are going to be leaders in the community ... It has been a great opportunity, especially working with Tom," Cone relates.

Sloan's experience is similar, "I have taken a lot of what I learned at Federation early on and used it broadly in the outside community. I certainly enjoyed working with my mentee Sam - he's a very serious guy and thinks about things deeply. I think he has a good future in Greensboro."

LeBauer and her Fellow Laura Hausman are also embracing the mentor/mentee aspect of GFLI.

Hausman believes she has learned a lot about herself and her leadership style. "Everyone has something to offer as a leader and it has been amazing to learn how to work with others to create something bigger. Gail has been an incredible resource

**“Together they
possess the power to
move mountains in
our community.”**

to me because she was once a young leader. I can only hope to be half the leader that Gail has been."

LeBauer believes it is up to each of us to add our strengths for the coming generations - in Israel, and home, and in the larger community. "I am so grateful for the opportunity to serve, and my wonderful mentee Laura Hausman and I are a match made in heaven."

Carly Dunno, GFLI Program Manager, reflects that "each of the GFLI fellows brings their own unique abilities to the table, and when they are all together, magic happens. The fellows are bright, passionate and thoughtful. Together they possess the power to move mountains in our community."

GFLI has been made possible by a very generous grant from The Leon Levine Foundation of Charlotte.



YOU SAY POTATO, WE SAY...LATKES!

In December, PJ Library and PJ Our Way subscribers celebrated the first night of Chanukah with a latke party at the Greensboro Children's Museum. Fifteen attendees, ages 8-11, participated in a cooking class, where they learned how to make latkes. While the older children baked, thirteen younger children enjoyed free play in the museum. When the latkes were ready, everyone gathered for a tasting party and Chanukah crafts. The children did a fabulous job, and the latkes were scrumptious!



TIKKUN OLAM IN ACTION: Providing a Thanksgiving Meal

Thanksgiving weekend, JFS partnered with Beth David Synagogue and the Streetwatch program to provide chicken and cranberry sauce, side dishes and dessert for the homeless or hungry in Greensboro. Approximately 150 servings were provided as an on-site meal and in take-home boxes. The opportunity to serve was a rewarding and meaningful experience for all who volunteered. Contributing to the wellbeing of our neighbors is consistent with JFS's mission, and with the Jewish community's commitment to *tikkun olam*.





Lois Mezer, Sara Jacobs



Marian Stein, Hannah Samet,
Alyssa Samet



Emily Linden,
Sarah Glover



Elizabeth Strasser, Jen Strasser,
Jenny Kaiser



PARTY WITH A PURPOSE

In November, the Women's Philanthropy Collective sponsored their fourth annual Chanukah event at GIA. This year, the event took place on Giving Tuesday and Tzedakah was added to the traditional Latke, Vodka & Babka event. Nearly \$700 was raised in one evening to directly support the JFS Van to provide rides for seniors on Shabbat and holidays. The funds raised that evening were matched by The Leon Levine Foundation to fully fund a year of van rides. Thank you to the event committee: Irene Cohen, Ashley Garcia, Corie Hampton and Erin Rosen.



Enjoy a short video featuring highlights and interviews from the event! Just use your smart phone to scan here:



Many attendees graciously "Donated their Drink". Eight dollars from each coin was used to help fund rides on the JFS van.



Dana Schleien, Shelly Weiner, Eva Moshkovich,
Peggy Bernstein



Laura Friedman, Ellen Samet



Tammi Thurm, Donna Cohen



Erin Rosen, Erica Procton, Miriam Kaftal



Laura Hausman, Ashley Garcia



Jessica Wisniewski, Rima Kleiner, Michelle Lunney,
Rachel Villalba

CREATE A JEWISH LEGACY DONOR SPOTLIGHT: **Phyllis Shavitz**

Phyllis Shavitz, The Jewish Foundation of Greensboro LOJE Chair, is being honored at the 2019 International Lion of Judah Conference in Florida as a recipient of the Kipnis-Wilson/Friedland Award for her commitment to Jewish philanthropy and community service.

Growing up in Virginia at Beth El Synagogue, her mother taught her that Judaism always comes first. “She believed that even if you had hardly any money, you had to give first to the Synagogue,” Phyllis remembers. Those were values that she later passed on to her son and grandsons.

She believes “giving young people a Jewish education is very important ... and it was to Stanley, too.” When their son Steven was young, she taught at the Sunday school at B’nai Israel Synagogue in High Point and later established the Stanley Shavitz Camp Judaea Camper Incentive Grant Fund and the Shavitz Family Climbing Tower after seeing how much fun their grandsons had at camp. They also created a scholarship to sponsor high school students at the American Hebrew Academy, and funded the Hebrew language-learning lab.

Phyllis’s philanthropic efforts are felt throughout North Carolina. “I often approach even my non-Jewish commitments with a Jewish bent since I believe strongly in giving back to the greater community.” One of her greatest achievements is the “Taste of the Town” in High Point. The first event was held in 1989 and raised \$3,000 for three local nonprofits. The event has grown over the past three decades to including more than 60 restaurants, hundreds of volunteers and raising over \$135,000 for Hospice of the Piedmont. “This cause is now even more dear to my heart since I used Hospice for Stanley’s last weeks,” she says.

Another project dear to her heart is the Judaic collection at The North Carolina Museum of Art. She and Stanley helped fund the acquisition of beautiful artifacts, including Torah finials and covers, spice boxes and menorahs. Most of them were salvaged from Europe after World War II. She especially loves showing them to children.

She wrote in her Create a Jewish Legacy letter that “Being involved in philanthropy gives meaning to my life. I couldn’t be happier with our Jewish life in Greensboro. I am proud of all our Jewish organizations and it’s important for me to know that all the organizations I hold dear, will live on for my family after I am gone.”

Congratulations to Phyllis Shavitz for all of her accomplishments and for being honored at the 2019 ILOJ conference.

“Being involved in philanthropy gives meaning to my life.”



Phyllis Shavitz, the Jewish Foundation of Greensboro Lion of Judah Endowment (LOJE) Chair

Let your name be a blessing



Your bequest or other planned gift of any size will keep the community strong for generations

Create a Jewish Legacy
What will your legacy be?

For more information, please contact:



JEWISH FOUNDATION
of Greensboro

(336) 852-0099 or visit us online at
www.shalomgreensboro.org



(336) 292-1911

Formerly The HR Group, Inc.

Our highly experienced team can act as your Human Resource department or support the one you have.

SERVICES INCLUDE

- Strategic Planning & Capacity Building
- Compensation Consulting
- Human Resource Compliance Consulting
- Comprehensive Training & Development
- Executive Search & Recruiting
- Executive Coaching
- Interim HR Management
- Pre-Employment Assessments
- HR Technology Tools



Offices in New York, NY and Greensboro, NC

www.jerhrgroup.com

www.myprofiletool.com

David Moff & Patsy Wiggins, Managing Consultants

Your Future ...

Our Focus

Wealth Management & Tax Planning



Jerrold B. Pinsker, JD



Sam Cone, JD

Integrity ♦ Competence ♦ Creativity

PINSKER WEALTH MANAGEMENT, INC.
(336) 294-1811

Securities offered through LPL Financial, Member FINRA/SIPC.

FEDERATION
Welcomes New Staff Member



Laura Hausman

Greensboro Jewish Federation is pleased to announce that Laura Hausman has been hired as the new Major Gifts Officer.

Laura is a proud alumna of Florida State University, where she earned a degree in International Affairs and English. Since then, she has worked in both for-profit and non-profit sectors, and has over 10 years of experience in marketing, account management and Jewish communal work.

As the Major Gifts Officer, Laura will work closely with the development team to design and implement a comprehensive fundraising plan, as well as identify and cultivate annual gifts and transformative philanthropic commitments. She looks forward to building strong relationships with Federation's wonderfully steadfast volunteers and donors. She believes deeply in Federation's powerful mission-driven work and is eager serve the community in this new capacity.



Discover The Joy Of Two Right Feet



Triad Foot & Ankle Center

336.375.6990 • triadfoot.com
Greensboro • Burlington • Asheboro • High Point

TEMPLE EMANUEL: Annual MLK Service Celebrates Community



MORE THAN A GAME: Friendship Circle Tennis Event Builds Lasting Memories



Individuals with special needs and their teenage friends enjoyed an afternoon of tennis, chatting and fun, showcasing the deep impact that Friendship Circle has had on both recipients and volunteers alike.

High school senior, Janice Fermon said that her special friend of four years, Danielle, has made a significant difference in her life. "Whatever I may have given her, I have no doubt that she has given me double. That's the value of getting to know and love someone with special needs," Janice said.

"It has been amazing to see the powerful impact that Friendship Circle has on everyone who gets involved," said Chabad Rebbetzin Hindy Plotkin, who founded the organization in 2010. "The families get crucial support and the volunteers are exposed to a deeper dimension of humanity, one that shines beyond labels, abilities and social status."

"I see that Danielle can be happy from small, simple things," Janice said about her friend, who is three years her elder. "She's taught me to appreciate the things I sometimes take for granted, to realize that these are what matters most in life. Yes, I help her, but the amount that I learn from her is more than I could possibly give. I could not be more thankful for having Danielle in my life."



Friday, January 18, marks Temple Emanuel's twenty-third annual Martin Luther King, Jr. Sabbath Service. The service starts at 7:30 p.m., and will feature Bishop James R. Woodson, II, Senior Pastor, St. James Home of Fresh Start Ministries, as the special guest speaker. Bishop Woodson has traveled to Israel before and will be joining Rabbi Fred Guttman, Rabbi Joshua Ben Gideon and Rabbi Andy Koren on an upcoming Interfaith Clergy trip to Israel.

The service comes at a time when bigotry, racism, and homophobia are regaining prominence in our headlines. The KKK/Neo-Nazi march last year in Charlottesville and the murder of Jews at Shabbat services in Pittsburgh highlight the fact that race relationships desperately need attention.

This event has become a fixture in the interfaith community by fostering understanding, relationships and social capital. Many attendees view this service as the starting point for the MLK weekend celebrations.

It should be clear to everyone that the struggle for equality and justice continues to this day. Dr. King said that the moral arc of history is long, but that it bends toward justice.

Please join Temple Emanuel for this most moving and meaningful service at the Jefferson Road Campus.

FROM ONE GENERATION TO THE NEXT:

Camp Judaea alumni bring their children to camp

Front row: Peri Bombart Kaplan, Civia Lieb Gerber, Elisheva Ende Funk, Jessica Klein Dickson;
Back row: Daniel Cook, Aaron Nelson, Tracy Samet Grant, Daniel Malino



BJH **BJH FOUNDATION:**
Newly Elected Board of Directors

BJH Foundation for Senior Services is proud to announce the Board of Directors for the 2018-2019 year:

EXECUTIVE BOARD:

- | | |
|---------------------------------------------|--------------------------|
| Ron Manheimer, Ph.D. , Asheville, NC | President |
| Ari Medoff , Durham, NC | President Elect |
| Stefanie Kahn , Raleigh, NC | 1st Vice President |
| Alec Natt , Mooresville, NC | Treasurer |
| Betsy Gamburg , Greensboro, NC | Secretary |
| Jerrold Pinsker , Greensboro, NC | Immediate Past President |

DIRECTORS:

- | | |
|------------------------------------------|----------------------------------------------|
| Andrew Aronson , Greensboro, NC | Susan Robinson , Greensboro, NC |
| Rick Bober , Greensboro, NC | Leonard Rogoff , Chapel Hill, NC |
| Joshua Gould , Greensboro, NC | Erin Rosen , Greensboro, NC |
| Aaron Joachim , San Francisco, CA | Michael Schifftan , Winston-Salem, NC |
| Paul Lieb , Greensboro, NC | Ron Weiner , Matthews, NC |
| David Moff , Greensboro, NC | Robert Weiss , Charlotte, NC |



Ron Manheimer

The newly elected president, Dr. Ron Manheimer, will serve a 2-year term of office. Ron Manheimer has lived in Asheville, NC, for 30 years and has served on the BJH Foundation board for seven years. He was the founding director of the NC Center for Creative Retirement (now the Osher Lifelong Learning Institute) at UNC Asheville, where he was also Research Associate Professor of Philosophy. Prior to that, he was director of older adult education of The National Council on the Aging in Washington, D.C.

The newly elected board is dedicated to helping Jewish adults in North and South Carolina by awarding grants for programs that provide guidance and improved services which help the individuals live comfortably as they age. Grants are awarded annually to nonprofit organizations serving the Jewish adult population. Many of the grant recipient organizations include a case management aspect - a main focus area of BJH Foundation. The 2019 grant application will be available at www.bjhfoundation.org by mid-January.

For more information about BJH Foundation, visit www.bjhfoundation.org; contact Wendee Cutler at (336) 854-8400 or wcutler@bjhfoundation.org.



STUDY MISSION TO BERLIN, GERMANY

September 16-22, 2019

For more information, contact Dianne Hines at (336) 852-5433 x233

ORDER 2019 MAH JONGG CARDS

HADASSAH



Regular cards are \$8 and large print cards are \$9.

Order through Jeanette Katz (954) 292-9168 by Friday, January 25. Hadassah Hospital in Israel will receive a rebate for cards sold.

For all your printing and direct mail needs!

Office: 336.855.2622
Toll Free: 877.271.3004

FREE ESTIMATES

estimates@pdmgso.com

PDM
PIEDMONT DIRECT MAIL

901-A Norwalk St Greensboro, NC 27407

COMMERCIAL REAL ESTATE

- DEVELOPMENT
- INVESTMENT
- MANAGEMENT



DEEP RIVER PARTNERS

(336) 617-2002
www.DeepRiver.com

**Brian Ross
Steve Shavitz**

B'NAI SHALOM DAY SCHOOL

Students Connect History with Real-world Experiences



Each year, 6th, 7th and 8th grade students at B'nai Shalom Day School participate in **"Connecting the Unconnected"**, a collaborative learning experience that brings together six Jewish day schools from small communities.

During the school year, students learn with classmates and with peers from the other participating schools through remote collaboration and video conferencing. The program starts with students establishing a foundational knowledge of relevant Jewish texts and historical case studies. They then apply this knowledge through real-world experiences during the combined, end-of-the-year trip to Alabama.

Benefits of the trip include meeting participants in the Civil Rights Movement, visiting historical sites such as the Edmund Pettus Bridge, the Rosa Parks Museum, the Lynching Memorial, the Southern Poverty Law Center,

and the Holocaust Museum. These experiences allow the students to see, hear, and touch parts of history which had only previously been learned in the classroom. Doing so not only develops intellectual understanding of these topics, but also deepens an emotional connection.

B'nai Shalom middle school students are fortunate to take part in this collaborative learning experience due to the generous experiential learning grant provide by the Scott D. Kaplan family.

BETH DAVID SYNAGOGUE

Works Toward Full LGBTQ Equality and Inclusion in Jewish Life



Beth David Synagogue was chosen for a year-long leadership cohort focused on LGBTQ inclusion. The cohort was brought together by The United Synagogue

for Conservative Judaism (USCJ) and Keshet, the organization that works for full inclusion of LGBTQ Jews in Jewish life.

In early December, Rabbi Joshua Ben-Gideon, Jason Cathcart (Beth David's Director of Education), and Corie Hampton (Beth David's Executive Director) traveled to Maryland to attend the opening summit of the Keshet Leadership Project. They were joined by approximately 20 other USCJ affiliated synagogues from the eastern seaboard for an intensive session focused on what it means to be a more inclusive synagogue.

During the first part of the summit, Keshet staff spoke to the synagogue about what it means to be an embracing synagogue. During the second half of the summit, the Beth David leadership staff created a plan and goals for LGBTQ inclusion in the community.

Beth David will be working one on one with a "coach" from Keshet over the coming year to achieve the goals put into place. USCJ and Keshet will help guide the synagogue and supply resources from around the country for best practices. The synagogue is very excited to be a part of the cohort and looks forward to enhancing inclusion in the future.



Home of the Unlimited Wash Club!

Wash your vehicle up to once per day starting at just \$19.99 per month

Greensboro • High Point • Kernersville

706-938-0991

www.tidalwaveautospa.com

AMERICAN HEBREW ACADEMY

Named School of Distinction by Newsweek Magazine



The American Hebrew Academy, the only international Jewish college prep boarding school in the world, is proud to announce that it has been named among the top Private Schools of Distinction for 2018 by *Newsweek Magazine*.

This year, *Newsweek's* Educational Insight editorial board selected only 14 private schools in the United States for its annual list of distinguished preparatory academic institutions. The *Newsweek* announcement is now the fourth notable award by independent organizations the American Hebrew Academy has received in 2018 in recognition of its outstanding success, students, faculty, and staff.

To read more about the *Newsweek* Private Schools of Distinction and the American Hebrew Academy, please visit www.newsweek.com/insights/private-schools-distinction-2018/american-hebrew-academy.

Jewish International Summit for Teens January 6 – 13, 2019

Join 8th and 9th-grade students and faculty members from Jewish day schools around the globe for a unique week-long educational experience at the American Hebrew Academy. This event will bring Jewish teens from multiple cultures and nationalities together to interact and raise awareness, debate and problem solve, and ultimately propose meaningful Jewish solutions to some of the greatest issues impacting our world today. For more information, contact Barbara Greenstein Boyette, Ph. D. at bboyette@americanhebrewacademy.org.



JTRIAD Impacts Communities Through Philanthropy

JTriad has an impact in multiple ways ... internally within its own peers, in the local Jewish community, and also within greater Greensboro.

Providing an opportunity for Jewish young professionals under 40 to connect with each other, JTriad members also celebrate holidays, and share activities varying from casual meet-ups to Shabbat dinners to group-wide *Tikkun Olam*.

JTriad also rallies around the local Jewish community by volunteering at the Greensboro Jewish Festival, helping set up Beth David's book sales, and using social media to help promote community events.

This year, JTriad members voted Backpack Beginnings as its partner organization, and will show support throughout the year by raising money, collecting food, and scheduling volunteer sessions among members.

JTriad is run by a small committee of dedicated volunteers and is supported by the Greensboro Jewish Federation, Temple Emanuel of Greensboro, Temple Emanuel of Winston Salem, and Beth David Synagogue. To stay updated on all events, visit www.JTriad.com or join the JTriad Facebook Group.

ONE SOURCE. SIMPLY CENTERED AROUND YOU.

WellSpring Solutions is pleased to announce **Just1Navigator** — a single source to help you navigate the complex maze of solutions for assistance and care services. Just1Navigator provides a personal Navigator who can guide you toward the right mix of services from our vast network of local providers that includes WellSpring as well as other reputable organizations.

Call Greensboro's single source for personalized assistance and care services for older adults at **336-265-1548**, or visit **Just1Navigator.com**



Powered by
Just1NAVIGATOR





HAPPENINGS: UPCOMING EVENTS IN OUR COMMUNITY

SATURDAY, JANUARY 5

BD Shabbasketball

4 p.m. Beth David Gym
Shabbasketball: Everyone is welcome to play basketball at the Beth David Gym

MONDAY, JANUARY 7

Chabad Tanya Class - The Bible of Chassidism

Mondays at 4:15 p.m. Chabad
Repeats on January 14, 21, 28
For more information, call (336) 617-8120

JFS Community Program - Foundations of Jewish Values

7-8:30 p.m. Federation Building
For parents of school age children.
Co-sponsored by B'nai Shalom Day School and The Early Childhood Engagement Center at Temple Emanuel. No charge, program open to all. To reserve your space, contact Jenny Schultz, (336) 852-4829 x 235 or email jschultz@shalomgreensboro.org.

FRIDAY, JANUARY 11

JTriad Shabbat Dinner

6:30 - 8:30 p.m.
Warm up on this cold Friday evening with Shabbat candles, kiddush, and friendly faces. Hosted by the McClanahan's. More information www.facebook.com/JTriad336/.

SATURDAY, JANUARY 12

PJ Library/PJ Our Way Pajama Party Havdalah

6:15 - 8:15 p.m. B'nai Shalom Day School
Come in PJs and help celebrate the end of Shabbat with song and dance. Older kids will play Glow in the Dark Gaga Ball, and the younger kids will decorate pillow cases. Event is free. RSVP required. Contact Carly Dunno (336) 852-5433 x243.

SUNDAY, JANUARY 13

TE Brotherhood Sports Breakfast

10 a.m. TE Jefferson Road Campus
*Free for Temple Emanuel members with their paid Brotherhood membership (\$50) and for all new Temple members. All other guests are just \$10. Email Scott Cooper, sbcooper@triad.rr.com to RSVP by January 7.

BSDS Winter Carnival Sunday Funday

3-4:30 p.m. B'nai Shalom Day School
An afternoon of fun and games in the gym. All children from preschool - 8th grade welcome.

TE Art Classes with Matt Fisher

3-4 p.m. TE Jefferson Road Campus
For K-5 grades. Cost \$18/student. Repeats on January 27, February 3 & 17. Space limited. For more information, contact Louise Van Schaack, lvschaack@tegreensboro.org.

WEDNESDAY, JANUARY 16

GJF Campaign Kickoff: Setting the Stage, featuring Rabbi Sharon Brous

6 p.m. Carolina Theatre, 310 S. Greene St.
Catering by 1618 Concepts, valet parking available. Cost: \$54/person \$36/JTriad (under 40) \$18/College and High School Students. Tickets available www.shalomgreensboro.org.

FRIDAY, JANUARY 18

TE MLK Shabbat Service

7:30 p.m. TE Jefferson Road Campus
More information can be found on page 12.

SATURDAY, JANUARY 19

BD MLK Shabbat Services

9:30 a.m. Beth David Synagogue
Special Shabbat services honoring Martin Luther King, Jr. featuring Out of the Garden.

Chabad Special Tu Bshvat Service and Kids Program

10 a.m. Chabad
Will be followed by Kiddush luncheon.

SUNDAY, JANUARY 20

BD MLK Day of Service

1 p.m. Beth David Synagogue
Celebrate the life of Martin Luther King, Jr. with a day of service by cooking in the Beth David kitchen for StreetWatch.

MONDAY, JANUARY 21

BSDS - enrollment opens to all new applicants.

For a tour, or more information, please contact Ashley Garcia at agarcia@bnai-shalom.org.

SATURDAY, JANUARY 26

TE Love Songs from the Bima to Broadway with Gabrielle Clissold and Friends

7:30 p.m. TE Jefferson Road Campus

SUNDAY, JANUARY 27

BD Out of the Garden

2-3:30 p.m. 211 S. Greene Street
Distribute food to families in Greensboro.

BD StreetWatch

4-5:30 p.m. 211 S. Greene Street
Serve food to those in need in downtown Greensboro. Sign up for above programs at www.bethdavidsynagogue.org.

TUESDAY, JANUARY 29

JFS Community Program - Mindful Meals

7-8:30 p.m. Federation Building
Connections will be made over a communal meal - come hungry. No charge - program open to all. To reserve your space, contact Jenny Schultz, (336) 852-4829 x 235 or email jschultz@shalomgreensboro.org.

THURSDAY, JANUARY 31

BSDS Kindergarten Readiness Panel Discussion

6:30-8 p.m. B'nai Shalom Day School
From Preschool Directors, to an Occupational Therapist, to Speech Therapists, hear from a range of experts on how to help your child prepare for entering grade school. For more information, call (336) 855-5091.

SUNDAY, FEBRUARY 3

GJF Super Sunday Telethon

9 a.m. - noon Federation Building
Volunteers needed! Register to volunteer - call (336) 852-5433 x233.

TE Brotherhood

Annual Deli Sports Night

5 p.m. TE Jefferson Road Campus
Email Scott Cooper, sbcooper@triad.rr.com, for details and to RSVP.

THURSDAY, FEBRUARY 7

JFS Presents A Matter of Balance

9:30 - 11:30 a.m. Federation Building
Eight sessions, classes run weekly through March 28 with instructor Mary Lou White. Classes are for older adults and are designed to improve balance, strength and flexibility. Register with Marlene Baruch (336) 852-4829 x224 or email mbaruch@shalomgreensboro.org.

GJF Women's Philanthropy Presents

Opening Hearts & Minds: Coffee, Chocolate, & Interfaith Conversations

7-8:30 p.m. Scuppernon Books
Event is free and open to all.

SATURDAY, FEBRUARY 9

BD Shabbboard Games

4:30 p.m. Beth David Synagogue
Shabbboard Games: Everyone is welcome to play board games at Beth David.

Triad Jewish Film Festival

February 9-20 RED Cinemas
Tickets on sale www.shalomgreensboro.org. REEL DEAL 6 film pass \$60; \$11 individual tickets; \$12 at the door; \$6 students. Call (336) 852-5433 to reserve your ticket by phone. Seating is limited. Show times and sponsors can be found on the inside front cover of this magazine.

MONDAY, FEBRUARY 11

JFS Expanding Torah: Faith and LGBTQ issues.

7-8:30 p.m. at Federation Building
Josh Orol and Rabbi Sandra Lawson will share their personal journeys and the impact of Judaism in their lives. Event is free and open to all. RSVP to Jenny Schultz, (336) 852-4829 x 235 or email jschultz@shalomgreensboro.org.

FRIDAY, FEBRUARY 22

BD Shabbat Dinner with Scholar in Residence Rabbi Arnowitz

6:30 p.m. Beth David Synagogue
Enjoy a catered Shabbat dinner. Register at www.bethdavidsynagogue.org.

SATURDAY, FEBRUARY 23

BSDS Annual Cadillac Dinner

7 p.m. B'nai Shalom Day School
For more information, contact Rachel Wolf at rwolf@bnai-shalom.org.

SUNDAY, FEBRUARY 24

Greensboro Hadassah Annual Mah Jongg Tournament

1-5 p.m. Beth David Synagogue
\$36/person - includes cash prizes, snacks & refreshments. RSVP to Carole Kaplan, caroleknc@yahoo.com

WEDNESDAY, FEBRUARY 27

Chabad 'A Historic Evening with Anne Frank's Stepsister Eva Schloss'

7 p.m. Carolina Theatre, 310 S. Greene St.
Enter the world of Anne Frank as told by her stepsister and childhood friend.

For complete information on all upcoming events, visit the Greensboro Jewish Community Calendar online at www.shalomgreensboro.org/jewish-federation-of-greensboro-calendar/monthly-grid/2019/01/18



LUCKY 32
SOUTHERN KITCHEN

GREEN VALLEY GRILL



336.379.0699 | PRINTWORKSBISTRO.COM



336.854.2015 | GREENVALLEYGRILL.COM



336.370.0707 | LUCKY32.COM

⊗ | PROXIMITY HOTEL

Ⓜ | O. HENRY HOTEL



336.379.8200 | PROXIMITYHOTEL.COM



336.854.2000 | OHENRYHOTEL.COM

Visit our websites to see the latest happenings.

JAN./FEB. HAPPENINGS

Here are a few things to do at our places.

- **CTG's Whodunit Mystery Dinner: Jan. 25 | 7 PM**
Learn more at OHenryHotel.com.
- **Videri Chocolate Dinner: Jan. 26 | 7 PM and Blend Your Own Bordeaux Wine Dinner: Feb. 8 | 7 PM**
Order tickets online at PrintWorksBistro.com.
- **Valentine's:** OHenryHotel.com or ProximityHotel.com
- **Winter Hotel Specials:** Book your winter weekend getaway at OHenryHotel.com or ProximityHotel.com
- **O. Henry Jazz & Package:** See the schedule and learn more at OHenryHotel.com.
- **Songs from a Southern Kitchen:** See the schedule and learn more at Lucky32.com.
- **Winter Menus:** We're featuring favorites from the farm: beets, pears, cabbage, kale, oysters and more...oh my

MONDAY FEB 25 2019, 3 PM • MAPLE ROOM • ELLIOTT UNIVERSITY CENTER • UNCG

Viral Populism: Antisemitism & Islamophobia in the Era of Mass Migration

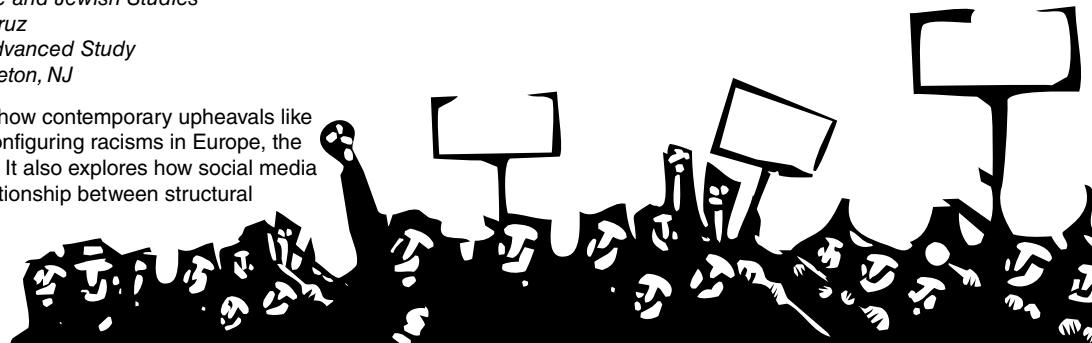
LECTURE BY

Dr. Dorian Bell

Associate Professor of Literature and Jewish Studies
University of California, Santa Cruz
2018-19 Member, Institute for Advanced Study
School of Social Science, Princeton, NJ

Professor Bell's work examines how contemporary upheavals like migration and populism are reconfiguring racisms in Europe, the United States, and South Africa. It also explores how social media is inducing us to rethink the relationship between structural racism and individual prejudice.

FREE & OPEN TO THE PUBLIC
FREE PARKING AT
WALKER PARKING DECK



PRESENTED BY

UNCG's Jewish Studies Program,
Islamic Studies Research Network, and the
Department of Languages, Literatures, & Cultures
with generous support from the
Herman and Zelda Bernard Distinguished
Professorship in Jewish Studies

the Henry Samuel Levinson Program
Endowment for Jewish Studies,
the Barbara Colchamiro Endowment,
and the Judith Rosenstock Hyman
Jewish Studies Program Endowment



GREENSBORO JEWISH FEDERATION
5509-C West Friendly Avenue - Guilford Corporate Park
Greensboro, NC 27410-4211
(336) 852-5433 fax (336) 852-4346

Address Service Requested

Non-Profit
Organization
U.S. Postage
PAID
Greensboro, NC
Permit No. 339

“ANSWER THE CALL”



Greensboro Jewish Federation will host the
**SUPER SUNDAY
TELETHON**
Sunday, February 3, from 9 a.m. to noon

VOLUNTEERS NEEDED!

Please consider volunteering by making calls to the community.

- >> Register to volunteer by calling (336) 852-5433.
- >> More information at www.shalomgreensboro.org



Greensboro
JEWISH FEDERATION