



  
**Wellness Home Behavioral Health**  
Health Equality - Health Equity - Social Justice - Research

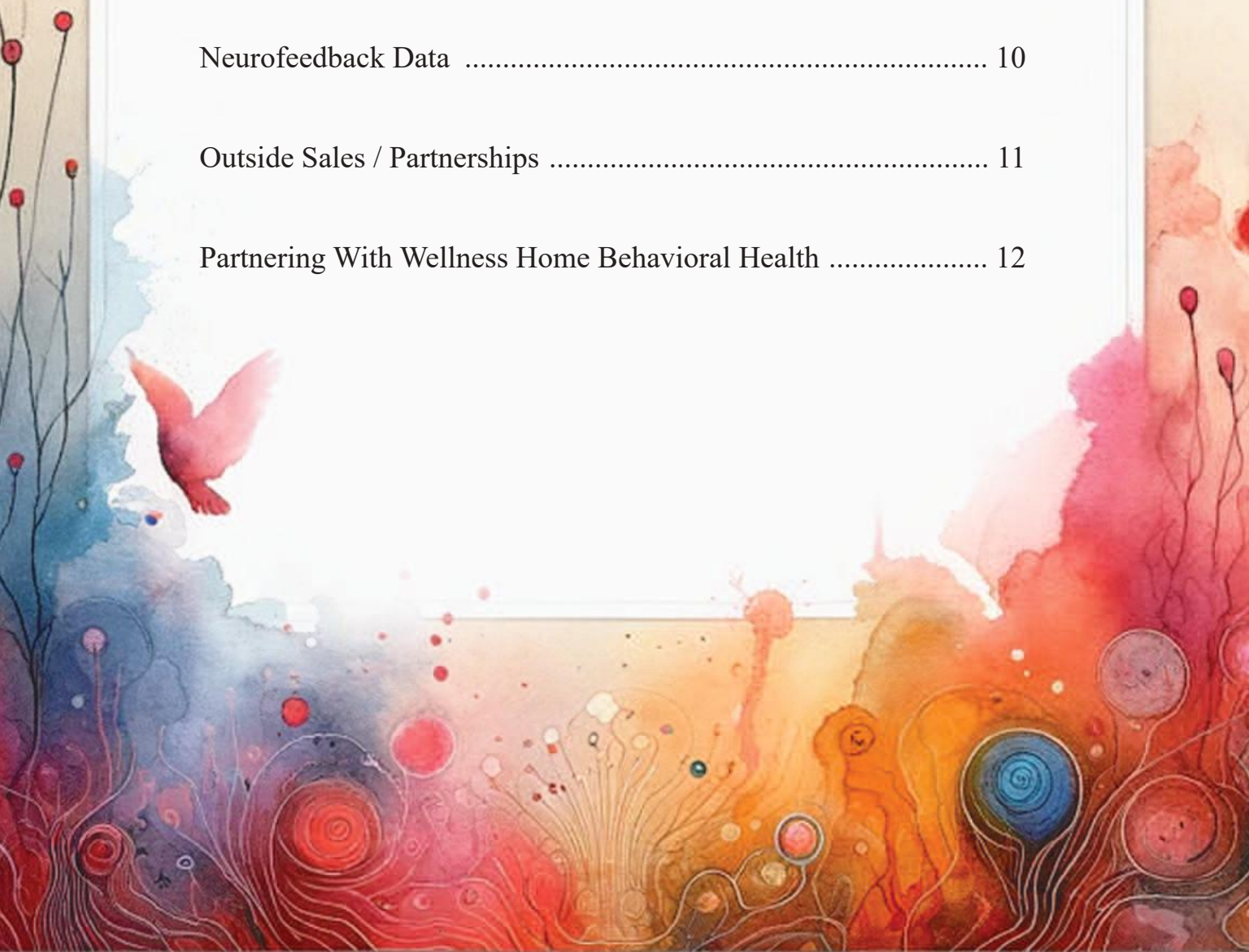
# **Wellness Home Behavioral Health**

## **Neurological Testing and Neurofeedback**



# Table of Content

Introduction .....	01
Our Technology .....	02
Cognition & Dementia .....	06
Depression & Anxiety Disorders .....	07
Attention-Deficit / Hyperactivity Disorder (ADD / ADHD).....	08
Post-Traumatic Stress Disorder (PTSD) .....	09
Neurofeedback Data .....	10
Outside Sales / Partnerships .....	11
Partnering With Wellness Home Behavioral Health .....	12







Wellness Home Behavioral Health Neurological Testing assists patients and providers in identifying conditions such as:

- ✔ Vascular Dementia
- ✔ Epilepsy
- ✔ ADHD
- ✔ Depression
- ✔ Mild Cognitive Decline
- ✔ Traumatic Brain Injury
- ✔ Anxiety
- ✔ Memory Loss
- ✔ Sleep Disorders



# Our Technology

BrainView system is a noninvasive FDA 510(K) cleared medical device that identifies changes in brain activity up to 10 years before the onset of symptoms.

The technologies used in BrainView include:

- ✔ Electrocardiography (ECG)
- ✔ Electroencephalography (EEG)
- ✔ Event-Related Potentials (ERP) (Visual and Auditory)
- ✔ Frequency-Based Analysis of EEG Data
- ✔ Quantitative Electroencephalography (QEEG)
- ✔ Brain 3D Mapping (eLORETA Source Analysis)
- ✔ Routine EEG with Spike Annotations and Raw Data
- ✔ Neurofeedback
- ✔ Behavior Metrics
- ✔ Subjective Neuropsychological Survey
- ✔ Heart Rate Variability Analysis (HRV)



Demo Demo

Gender: Male  
Age: 76 (DOB: Apr 26 1944)

Weight: 175 lbs  
BMI: 26.6

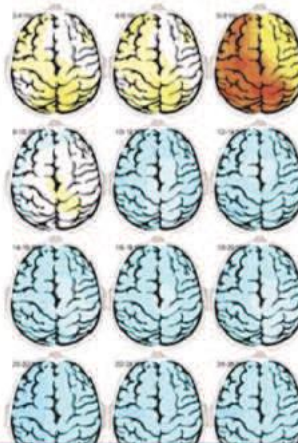
Height: 5 8 8 in

Exam Date: Jun 19 2020 13:37

EEG Frequency Analysis

	Score	Norms	
Eyes Open: Posterior Peak Frequency	6.9 Hz	8 - 12	F 10 A A A A A E F 15
Eyes Open: Theta/Beta Ratio	1.56	< 1	A A A A C D E F 2
Eyes Closed: Posterior Peak Frequency	6.7 Hz	8 - 12	F 10 A A A A A E F 15

Eyes Open - Headmaps - Z Scored



Evoked Potentials (ERPs)

	Score	Norms	
Visual Processing	150 ms	P200 < 175	A A A B C D E F 250
Auditory Processing	195 ms	P200 < 175	A A A B C D E F 250
Attention / Vigilance	345 ms	P300 < 370	A A A A B C D E F 450
Information Processing / Working Memory	315 ms	P300 < 360	A A A B C D E F 450

Behavioral Motor Test

	Score	Norms	
Reaction Time	421 ms	350 - 550	A A A B C D E F 550





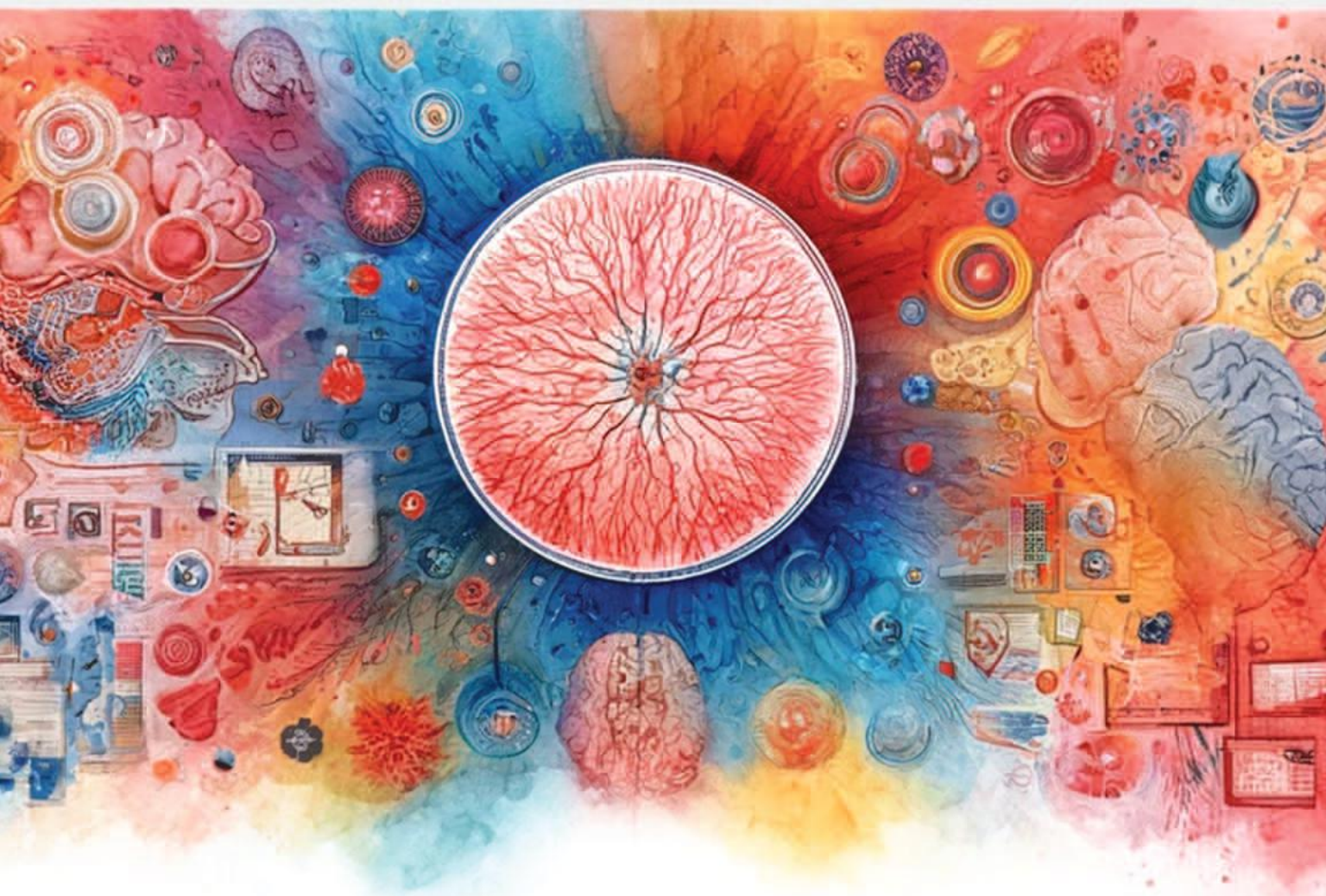
Wellness Home Behavioral Health is taking behavioral health beyond the realms of traditional services. The goal is to offer providers with additional tools to advance the diagnosis and management of the following behavioral health diagnoses:

- ✔ Neurocognitive function testing
- ✔ Warning signs in advance of disease onset of memory loss dementia, and other conditions related to cognitive decline
- ✔ HIV Associated Neurological Disorder (HANDS)
- ✔ Depression
- ✔ Anxiety Disorders, PTSD
- ✔ ADD / ADHD
- ✔ Sleep Disorders
- ✔ Chronic Pain









## Cognition & Dementia

- ✔ Age-related cognitive decline/dementia
- ✔ HIV-Associated Neurocognitive Disorder (HAND).

CHARTER study identified that the overall prevalence of **HAND**, driven by its more milder form, increased significantly to 44%. Curiously, the study found that the rate of cognitive impairment was higher in the population treated with HAART rather than the off-treatment group, which may reflect severity of disease and length of infection.

**HAND** encompasses a hierarchy of progressively more severe patterns of neurological involvement. It is defined as an acquired impairment in cognitive functioning involving at least 2 ability domains with a decline of daily functioning in severe cases. The spectrum ranges from **asymptomatic neurocognitive impairment** (ANI) to **minor neurocognitive disorder** (MND) to more severe HIV-associated dementia (HAD).



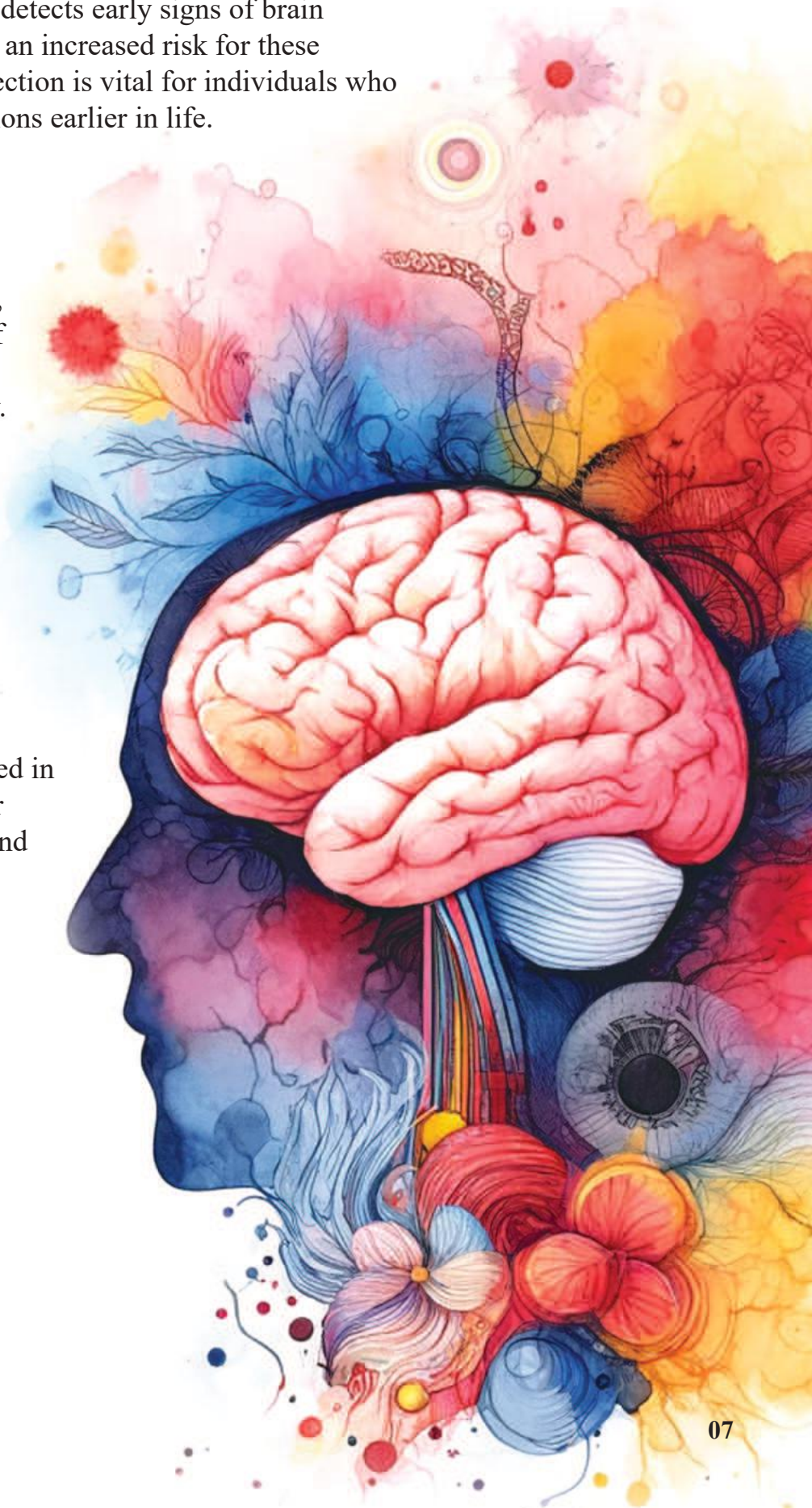


# Depression & Anxiety Disorders

BrainView helps in identifying the underlying causes of depression and anxiety. It detects early signs of brain changes that may indicate an increased risk for these conditions. This early detection is vital for individuals who may develop these conditions earlier in life.

The technology provides detailed reports including information on brain function, cognitive ability, and a thorough analysis of the brain's structure, function, and connectivity. These reports can inform diagnosis and treatment options, including the effectiveness of medications and supplements used to treat these conditions.

Additionally, BrainView NeuralScan Pro can be used in neurofeedback therapy for individuals with anxiety and depression, helping them learn to control specific aspects of their brain activity.





# Attention - Deficit / Hyperactivity Disorder ADD / ADHD

The BrainView NeuralScan system is adept at identifying and distinguishing issues related to attention such as ADHD.

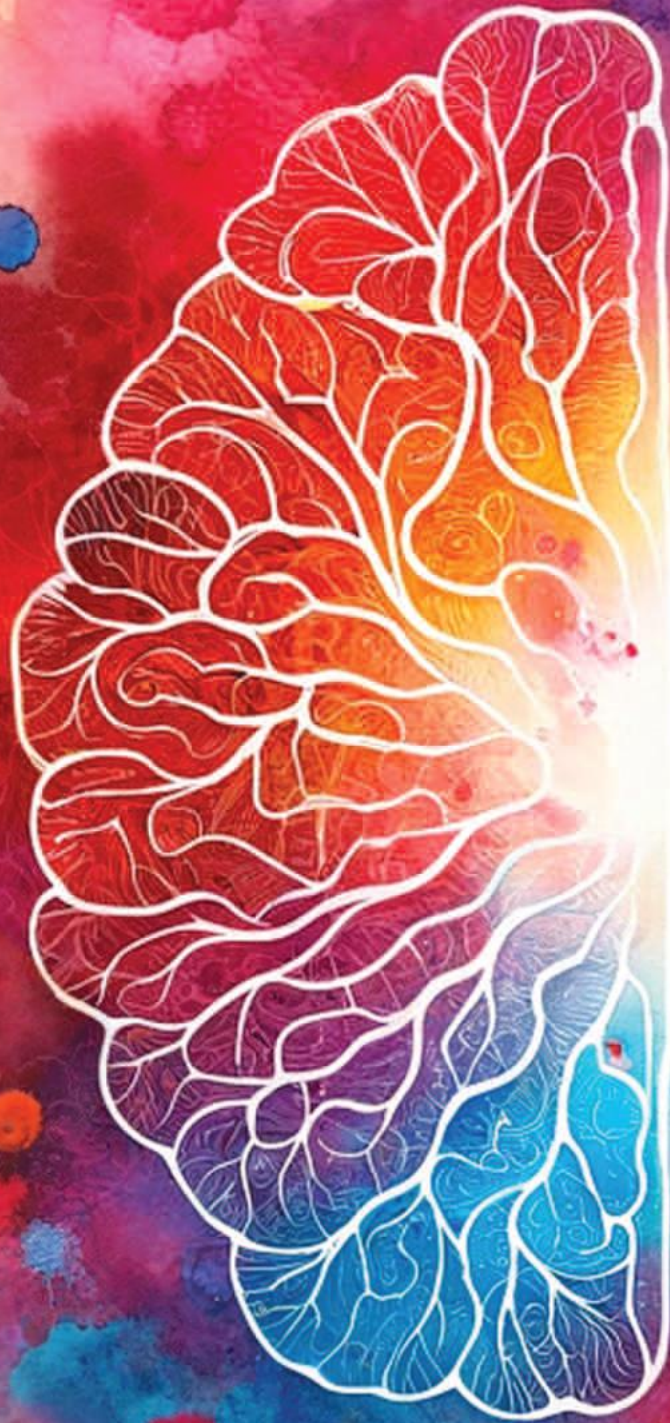
It provides quantitative assessments that are essential for a definitive diagnosis. It provides data to distinguish between conditions like ADD and ADHD, which have overlapping symptoms but may require different approaches to management and treatment.



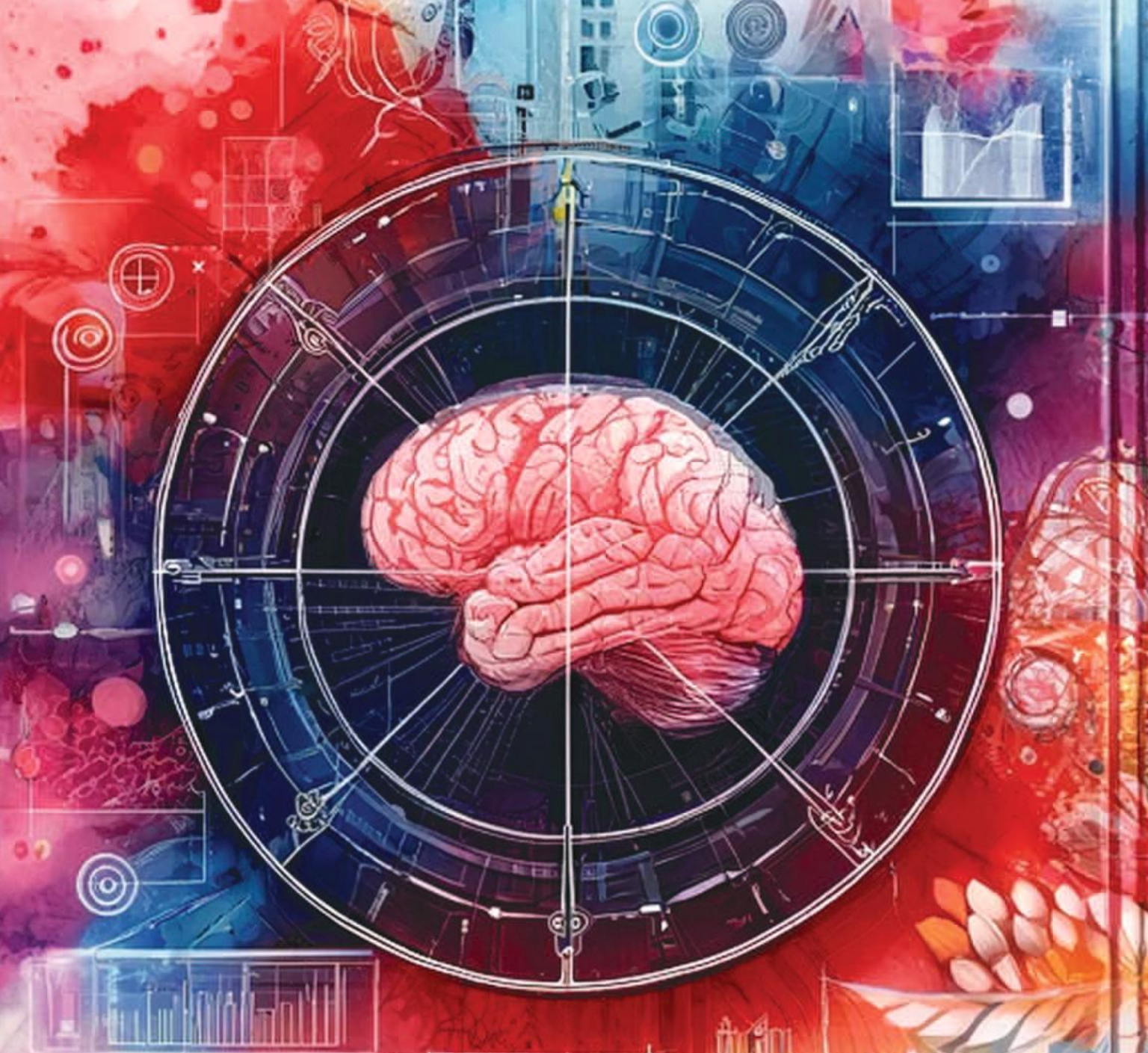
# Post-Traumatic Stress Disorder (PTSD)

BrainView NeuralScan Pro is instrumental in managing PTSD. It provides detailed images and analysis of brain activity, allowing healthcare providers to identify specific brain areas affected by PTSD and to monitor changes over time. This information is crucial in determining the most effective treatment plans and monitoring their effectiveness.

Studies have shown that individuals with PTSD exhibit abnormal brain activity in regions like the hippocampus and amygdala, involved in memory and emotional processing, respectively. The system's ability to provide objective measures of these changes helps in tailoring treatments to the individual's specific needs.







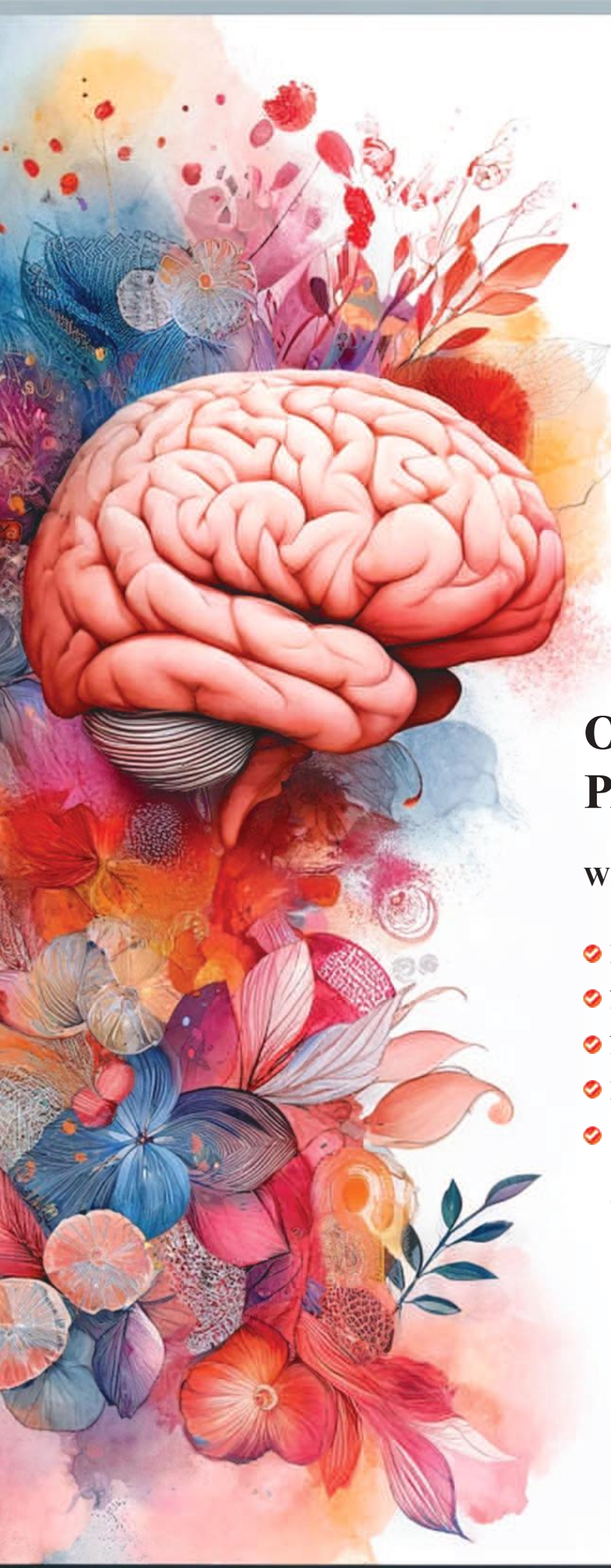
## Neurofeedback Data

BrainView neurofeedback provides data on brain function and interventions on how to alleviate symptoms from disorders such as ADHD, TBI, anxiety, and depression.

Neurofeedback is a form of brain training, similar to going to the gym. It teaches the brain healthier ways to function resulting in a decrease of symptoms.

Wellness Home Behavioral Health neurofeedback provides instantaneous information about changes in the patient/clients' brain electrical activity.



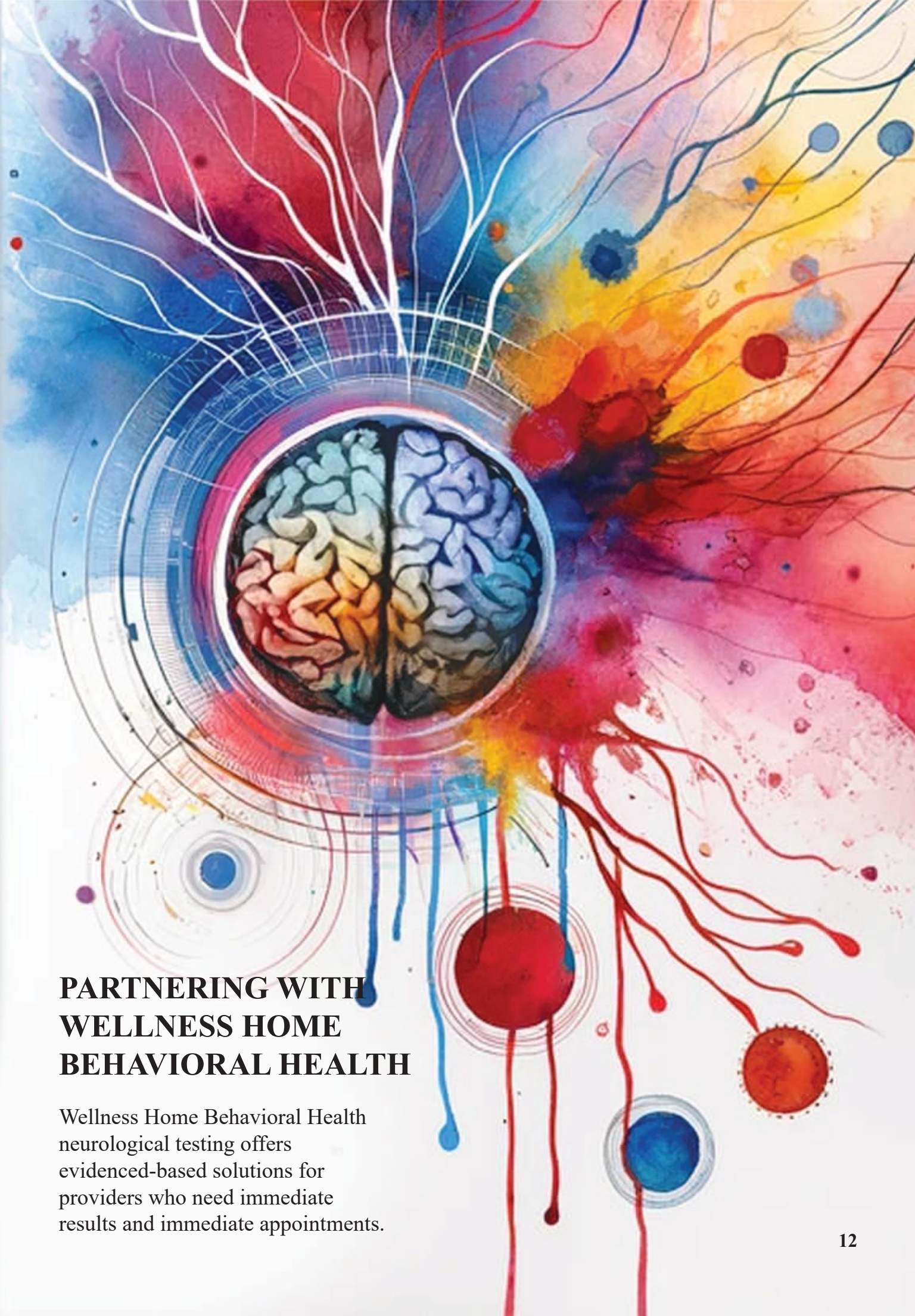


## **OUTSIDE SALES / PARTNERSHIPS**

**What will the WHoC be marketing?**

- ✔ Brain Mapping
- ✔ Neurocognitive Testing
- ✔ NeuroFeedback
- ✔ Low barrier scheduling for their patients
- ✔ Seamless transitioning patients and all findings back to referring agency, ensuring the continuity of care.





## **PARTNERING WITH WELLNESS HOME BEHAVIORAL HEALTH**

Wellness Home Behavioral Health neurological testing offers evidenced-based solutions for providers who need immediate results and immediate appointments.



# **Partnering with Wellness Home Behavioral Health for Neurocognitive Testing**

**COLLABORATION FOR  
COMPREHENSIVE BEHAVIORAL HEALTH**

---

**PARTNERING WITH WELLNESS HOME  
BEHAVIORAL HEALTH –NEUROLOGICAL  
TESTING WILL HELP REFERRING  
PROVIDERS GAIN EASY ACCESS TO LOW  
BARRIER NEUROCOGNITIVE TESTING**

---

**TESTING WILL ALLOW PROVIDERS TO  
PROVIDE EVIDENCED –BASED MENTAL  
HEALTHCARE AND COORDINATION OF CARE  
FOR PATIENTS WHO HAVE NOT SEEN  
IMPROVEMENTS ON CURRENT TREATMENT  
PLANS.**

---

**WHAT SETS US APART IS NOT JUST THE  
COMPREHENSIVE AND EFFECTIVE  
SOLUTIONS BUT ALSO THE PROMISE OF A  
SEAMLESS TRANSITIONING PATIENTS BACK  
TO YOUR CARE, ENSURING THE CONTINUITY  
AND WELL-BEING OF YOUR PATIENTS.**





**Wellness Home Behavioral Health**

Health Equality - Health Equity - Social Justice - Research