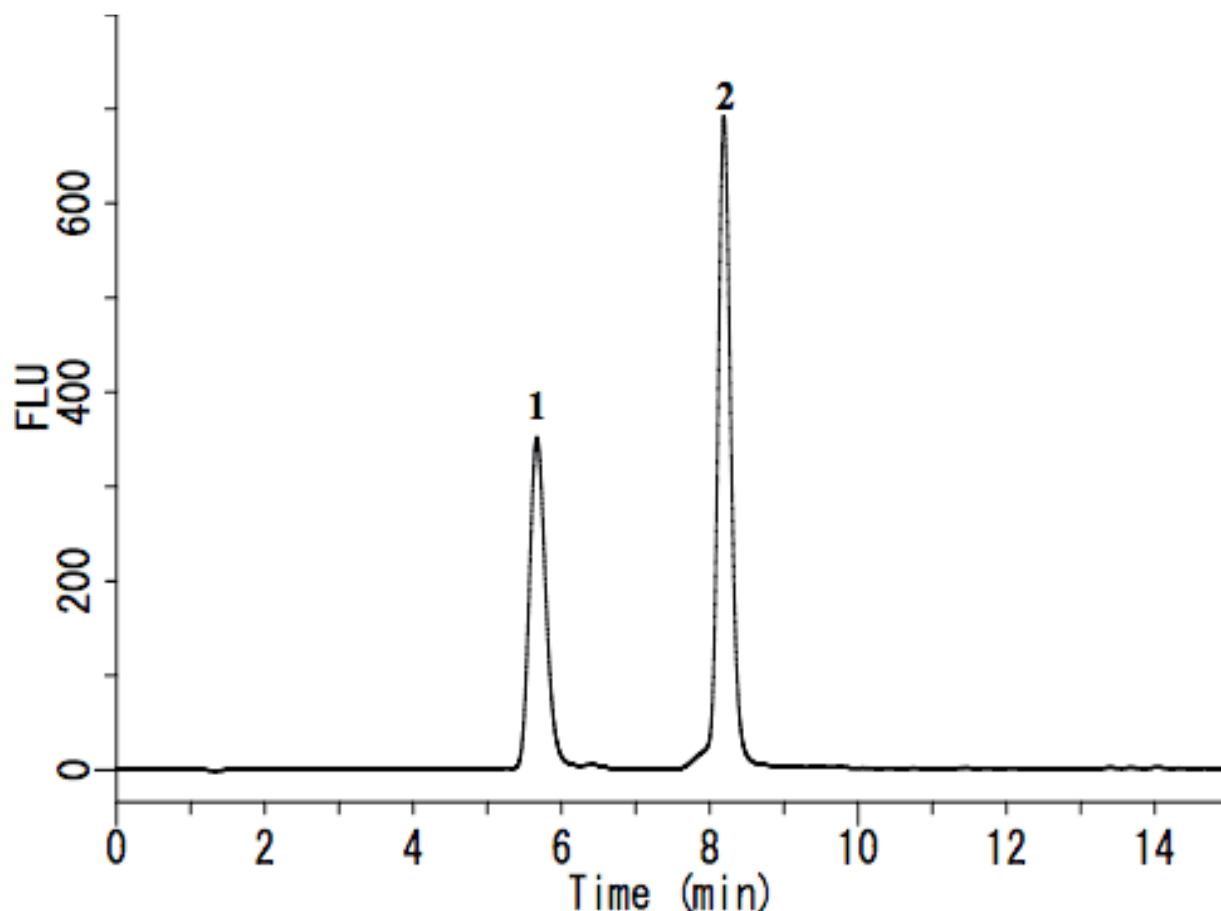


Analysis of Aldehydes (post-column derivatization by 1,3-Cyclohexanedione)

Data No. LA582-0696



System : GL-7400 system

Column : Inertsil ODS-SP (5 μ m, 250 \times 4.6 mm I.D.)

Column Cat. No. :

Eluent : A) 0.2% KH_2PO_4

B) CH_3CN

A/B = 98/2, v/v

Flow rate : 0.7 mL/min

Col. Temp. : 40 $^\circ\text{C}$

Detection : FL Ex 366 nm Em 440 nm (GL-7453A FL detector)

Injection Vol. : 100 μL

Sample : Aldehydes derivitized with 1,3-Cyclohexanedione

Solutes : 1. Formaldehyde (1mg/L)

2. Acetaldehyde (1mg/L)

(fluorescently-Derivatized)