



2023 PRODUCT CATALOGUE

01686 807 450 // SALES@STUDMARC.COM



CONTENTS

Services	3
Knowledge Base	4
Anti-Skate Studs	5
Anti-Sitting Studs	7
Tactile & Demarcation Studs	8
Road Studs	13
Tactile Strips	14
Tactile Paving Tiles	17
Stair Nosings	19
Accessories	20
Delivery & Returns Information	21

 To get back to this page – click the home button

For pricing please refer to the website



SERVICES

We understand that off-the-shelf isn't for everyone, and there are times when projects have a level of specificity that needs to be met, that's why we offer a suite of bespoke solutions. Whether you require custom sizing, a colourful finish, or lettering and imagery, we have you covered.

Bespoke Product Design Service

Should your project require something different, then we're ready to help with our bespoke design and manufacturing service. It simply offers more flexibility when technical requirements are more demanding and opens up opportunities, to create outstanding and unique designs that perfectly fit the brief.

Installation Service

Our installation service gives you peace of mind that the installation is being undertaken by a professional team from start to finish. Our highly trained and skilled teams carry out smooth and efficient installations for all our clients, from large projects to small ones.

Printed Imagery

If you want to add a splash of colour to your studs, then printing is for you. It's an ideal solution for subtly guiding foot traffic or signposting key areas or features.



Engraving/Infill and Laser Etching

We can engrave or laser etch symbols, numbers, and letters onto the surface of studs to give you a custom finish. Whether you're looking to highlight a walking route, cycle path, or add your own logo.



Printed Acrylic

New to our services is the option of printed acrylic. The design is inset within the stud with an acrylic disc covering the print and filling out the top of the stud, giving the imagery a unique look. A similar option to the standard print, but with a durable and unique twist.



Aluminium Anodised Studs

Available across our selection of anti-skate and road studs is the option to anodise them. Studs can be anodised in any RAL colour to suit the aesthetics of the streetscape, with an added layer of protection from corrosion, weathering, and wear.





KNOWLEDGE BASE

We're committed to bringing our customers quality information to ensure you have the available knowledge to assess, evaluate and select the correct tool for the job. Purchase and install with confidence.

The Studmarc knowledge base contains content and information relating to products, their application and uses, the materials used, and methods of installation. If you ever feel something is missing or have a question, let us know with an email and we'll happily provide you with the answers you need.

OUR TOP ARTICLES:

INSTALLATION

[Can I install tactile studs and strips on a wooden surface?](#)

[How to install self-adhesive studs and strips](#)

[What tactile stud or strip height do I need?](#)

FIXINGS AND ADHESIVES

[Epoxy Resin – A complete guide](#)

[When to use self-adhesive tactile studs and strips](#)

[What are the different types of tactile stud and strip fixing pins?](#)

INSTALLATION VIDEOS

[How to: Demarcation stud installation video](#)

[How to: Anti-Skate stud installation video](#)

[How to: Anti-Skate blade installation video](#)

ORDERING F&Qs

[What is an EORI number, and do I need one?](#)

[Do I need to approve or sign off on my order?](#)

TACTILE DEVICE USES

[How do tactile studs work?](#)

[Why retrofit tactile studs and strips?](#)

[What's the difference between on-street and off-street warning surfaces?](#)

MATERIALS & FINISHES

[What is marine grade stainless steel?](#)

[What is TPU or Thermoplastic Polyurethane?](#)

[Why choose aluminum for tactile indicators?](#)

For all of our articles – [Click here](#)



ANTI-SKATE STUDS

Our anti-skate studs are crafted from 316L stainless steel for an ideal finish when protecting features and furniture from skaters.

There are multiple attractive designs to choose from that are easy to both fit and retrofit.



Handrail Anti-Skate Stud

316L Stainless Steel

For use on 50mm handrails

Optional security fixing available



Sleeper Anti-Skate Stud

316L Stainless Steel

24mm diameter

2 x M8 fixing studs



Torpedo Anti-Skate Stud

316L Stainless Steel

4mm radius

2 x M8 fixing studs



Torpedo Anti-Skate Stud

316L Stainless Steel

20mm radius

2 x M8 fixing studs



Bar Anti-Skate Stud

316L Stainless Steel

20mm radius

2 x M8 fixing studs



ANTI-SKATE STUDS



Lozenge Anti-Skate Stud

316L Stainless Steel

4mm radius

2 x M8 fixing studs



Hemisphere Anti-Skate Stud

316L Stainless Steel

35mm OD

M8 fixing stud



Sphere Anti-Skate Stud

316L Stainless Steel

35mm OD, 4mm radius

M8 fixing stud



Anti-Skate Blade

316L Stainless Steel

100 x 45 x 4mm

Ideal for retrofit



Anti-Skate Blade

316L Stainless Steel

100 x 60 x 4mm

For installation with walls/brick/coping



ANTI-SITTING STUDS

Our anti-sitting studs provide a stylish deterrent for those looking to sit in inappropriate or precarious locations. Made from 316L stainless steel they are very much built to stand the test of time. Easy to fit or retrofit to any surface with three timeless designs.



Ball Anti-Sitting Stud

316L Stainless Steel
35mm diameter
M8 fixing stud



Ball Anti-Sitting Stud

316L Stainless Steel
50mm diameter
M8 fixing stud



Cone Top Anti-Sitting Stud

316L Stainless Steel
35mm diameter
M8 fixing stud



TACTILE & DEMARCATION STUDS

Lack of choice is not an issue when it comes to our tactile and demarcation stud range. Choose from a bevy of materials, patterns, sizes, and insert colours to achieve the ultimate aesthetic and flawless accessibility.



Aluminium Tactile Demarcation Stud AT

High-Quality Aluminium

Multiple diameters and height combinations available

Available with adhesive, stud, or without stud



Aluminium Tactile Demarcation Stud AT1

High-Quality Aluminium

Multiple diameters and height combinations available

Available with adhesive, stud, or without stud



Bronze Tactile Demarcation Stud BD

High-Quality Bronze

Multiple diameters and height combinations available

Available with adhesive, stud, or without stud



Bronze Tactile Demarcation Stud BD1

High-Quality Bronze

Multiple diameters and height combinations available

Available with adhesive, stud, or without stud



Bronze Tactile Demarcation Stud BT

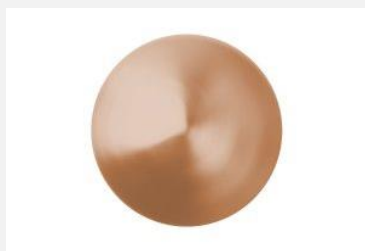
High-Quality Bronze

Multiple diameters and height combinations available

Available with adhesive, stud, or without stud



TACTILE & DEMARCATION STUDS



Bronze Tactile Demarcation Stud BT1

High-Quality Bronze

Multiple diameters and height combinations are available

Available with adhesive, stud, or without stud



Low Dome Anti-Slip Demarcation Stud

316L Stainless Steel

40mm diameter

M8 fixing stud



Plain Top Demarcation Stud Chamfered

316L Stainless Steel

40mm diameter

M8 fixing stud



Plain Top Demarcation Stud Chamfered

316L Stainless Steel

90mm diameter

2 x M8 fixing stud



Anti-Slip Tape Insert Stud

316L Stainless Steel – Multiple Coloured Inserts

Multiple diameters and height combinations are available

Available with adhesive, stud, or without stud



PVC R-10 Insert Stud

316L Stainless Steel – Multiple Coloured Inserts

Multiple diameters and height combinations are available

Available with adhesive, stud, or without stud



TACTILE & DEMARCATION STUDS



TPU Insert Stud

316L Stainless Steel – Multiple Coloured Inserts

Multiple diameters and height combinations are available

Available with adhesive, stud, or without stud



Tactile Demarcation Stud SD

316L Stainless Steel

Multiple diameters and height combinations are available

Available with adhesive, stud, or without stud

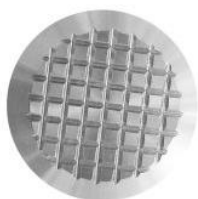


Tactile Demarcation Stud SD1

316L Stainless Steel

Multiple diameters and height combinations are available

Available with adhesive, stud, or without stud



Tactile Demarcation Stud SS

316L Stainless Steel

Multiple diameters and height combinations are available

Available with adhesive, stud, or without stud



Tactile Demarcation Stud ST

316L Stainless Steel

Multiple diameters and height combinations are available

Available with adhesive, stud, or without stud



TPU Tactile Warning Stud SM

Multiple Colours Available

Multiple diameters and height combinations are available

Available with adhesive, stud, or without stud



TACTILE & DEMARCATION STUDS

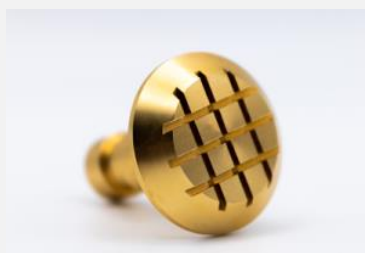


TPU Tactile Warning Stud S2

Multiple Colours Available

Multiple diameters and height combinations available

Available with adhesive, stud, or without stud



Cross Hatch Tactile Warning Stud

High-Quality Brass

25mm diameter

Monolith stud



Plain Top Tactile Warning Stud

High-Quality Brass

25mm diameter

Monolith stud

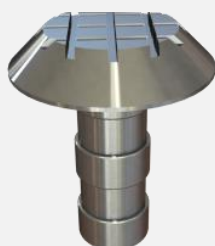


Plain Top Tactile Warning Stud

316L Stainless Steel

25mm diameter

Monolith stud



Cross Hatch Tactile Warning Stud

316L Stainless Steel

25mm diameter

Monolith stud



Low Dome Anti-Slip Demarcation Stud

High-Quality Brass

25mm diameter

Monolith stud



TACTILE & DEMARCATION STUDS



Plain Top Low Dome Demarcation Stud

High-Quality Brass

25mm diameter

Monolith stud

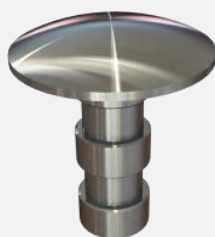


Flush Fit Visibility Demarcation Stud

High-Quality Brass

25mm diameter

Monolith stud

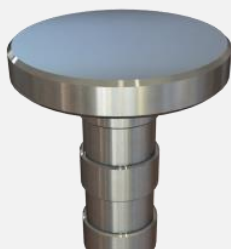


Plain Top Low Dome Demarcation Stud

316L Stainless Steel

25mm diameter

Monolith stud



Flush Fit Visibility Demarcation Stud

316L Stainless Steel

25mm diameter

Monolith stud



Low Dome Anti-Slip Demarcation Stud

316L Stainless Steel

25mm diameter

Monolith stud



Flush Fit Visibility Demarcation Stud

316L Stainless Steel

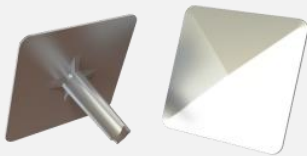
50mm diameter

Monolith stud



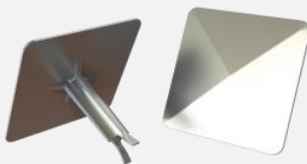
ROAD STUDS

Mark out crossings, parking bays, and boundaries with our selection of road studs. Choose between aluminium and 316L stainless steel for the ideal hardwearing finish. For a truly custom finish, aluminium road studs can be anodised to any RAL colour.



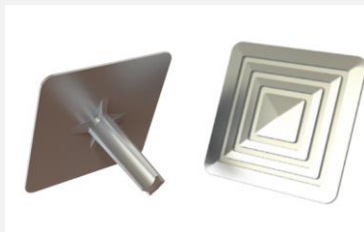
Plain Top Road Stud

316L Stainless Steel
100mm diameter
Chisel Shank



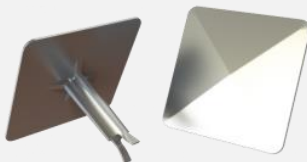
Plain Top Road Stud

316L Stainless Steel
100mm diameter
Fishtail Shank



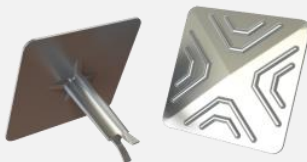
Serrated Road Stud

316L Stainless Steel
100mm diameter
Chisel Shank



Plain Top Road Stud

Aluminium
100mm diameter
Fishtail Shank



Ribbed Road Stud

Aluminium
100mm diameter
Fishtail Shank



TACTILE STRIPS

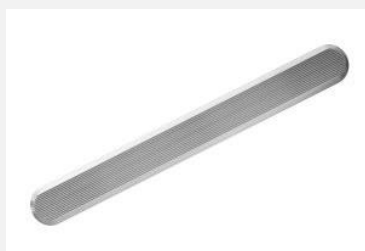
We have all bases covered when it comes to tactile strips! Choose from multiple materials, patterns, dimensions, inserts, and shapes, the list really does go on.

In the event that you can't find the combination you need, let us know what you're looking for and we'll fabricate it.



Guiding Strip AH – R9

Aluminium - 280mm length (custom length available)
Multiple width and height combinations are available
Available with adhesive, stud, or without stud



Guiding Strip AP1 – R9

Aluminium - 280mm length (custom length available)
Multiple width and height combinations are available
Available with adhesive, stud, or without stud



Guiding Strip BH – R9

Bronze - 280mm length (custom length available)
Multiple width and height combinations are available
Available with adhesive, stud, or without stud



Guiding Strip BP2 – R9

Bronze - 280mm length (custom length available)
Multiple width and height combinations are available
Available with adhesive, stud, or without stud



Guiding Strip with Anti-Slip Tape Inserts

316L - 280mm length (custom length available)
Multiple width and height combinations available
Available with adhesive, stud, or without stud

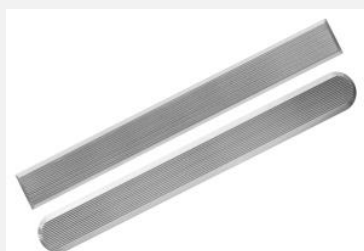


TACTILE STRIPS



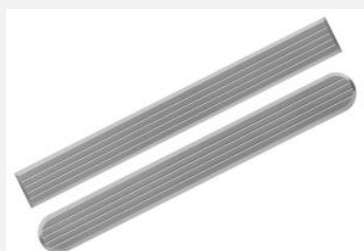
Guiding Strip with TPU Inserts

316L - 280mm length (custom length available)
Multiple width and height combinations available
Available with adhesive, stud, or without stud



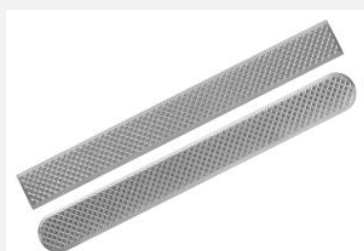
Grooved Guiding Strip SR1 – R9

316L - 280mm length (custom length available)
Multiple width and height combinations available
Available with adhesive, stud, or without stud



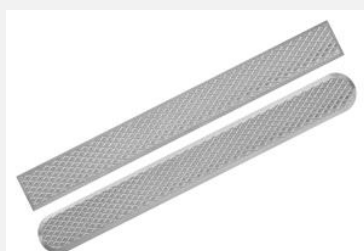
Grooved Guiding Strip SR2 – R9

316L - 280mm length (custom length available)
Multiple width and height combinations available
Available with adhesive, stud, or without stud



Hatched Guiding Strip SH1 – R9

316L - 280mm length (custom length available)
Multiple width and height combinations available
Available with adhesive, stud, or without stud



Hatched Guiding Strip SH2 – R9

316L - 280mm length (custom length available)
Multiple width and height combinations available
Available with adhesive, stud, or without stud

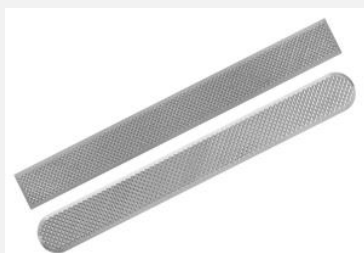


Plain Guiding Strip

316L - 280mm length (custom length available)
Multiple width and height combinations available
Available with adhesive, stud, or without stud



TACTILE STRIPS



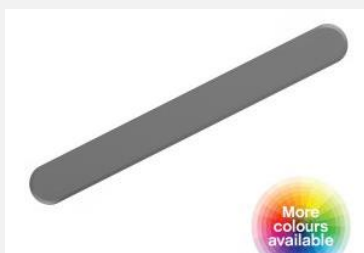
Pyramid Guiding Strip SP1 – R9

316L - 280mm length (custom length available)
Multiple width and height combinations available
Available with adhesive, stud, or without stud



Pyramid Guiding Strip SP2 – R9

316L - 280mm length (custom length available)
Multiple width and height combinations available
Available with adhesive, stud, or without stud



TPU Tactile Guide Strip - TM

280mm length (custom length available)
Multiple width and height combinations available
Available with adhesive, stud, or without stud



TPU Tactile Guide Strip – T2

280mm length (custom length available)
Multiple width and height combinations available
Available with adhesive, stud, or without stud



Tactile Warning Strip

316L Stainless Steel
200mm length – radiused
Screw hole



Tactile Warning Strip

316L Stainless Steel
400mm length – radiused
Screw hole



TACTILE PAVING TILES

Ideal for the eco-conscious, our TPU tactile tiles provide invaluable feedback to the visually impaired whilst being fully recyclable. They're lightweight, easy to fit, and highly durable in both indoor and outdoor environments.



TPU Tactile Blister Warning Tile

412.5mm (L) x 450mm (W) x 6.12mm (H) 4mm Stud
Multiple colours available
Available with adhesive or without



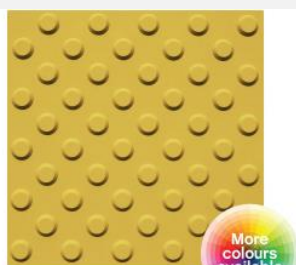
TPU Tactile Blister Warning Tile B2

412.5mm (L) x 450mm (W) x 6.12mm (H) 4mm Stud
Multiple colours available
Available with adhesive or without



TPU Tactile Blister Warning Tile B3

300mm (L) x 300mm (W) x 5.3mm (H) 3mm Stud
Multiple colours available
Available with adhesive or without



TPU Tactile Blister Warning Tile B4

300mm (L) x 300mm (W) x 6.24mm (H) 4mm Stud
Multiple colours available
Available with adhesive or without



TPU Tactile Corduroy Guiding Tile T1

150mm (L) x 450mm (W) x 5.26mm (H) 3.07mm Stud
Multiple colours available
Available with adhesive or without



TACTILE PAVING TILES



TPU Tactile Corduroy Guiding Tile T2

150mm (L) x 450mm (W) x 4.74mm (H) 2.94mm Stud

Multiple colours available

Available with adhesive or without



TPU Tactile Corduroy Guiding Tile T3

300mm (L) x 300mm (W) x 5.3mm (H) 3mm Stud

Multiple colours available

Available with adhesive or without



TPU Tactile Corduroy Guiding Tile T4

300mm (L) x 300mm (W) x 6mm (H) 4mm Stud

Multiple colours available

Available with adhesive or without



TPU Tactile Corduroy Guiding Tile

400mm (L) x 400mm (W) x 6.89mm (H) 4.5mm Stud

Multiple colours available

Available with adhesive or without



STAIR NOSINGS

Stair nosings and safety go hand in hand or foot on step, but there's no reason they can't add some style to any stair set. All of our stair nosings are ELOX treated for maximum longevity and are customisable with multiple coloured anti-slip tape and PVC inserts for added grip.



Aluminium ELOX Treated Stair Nosing

40mm width – 35mm height

Custom length

Available with screw opening or/and adhesive

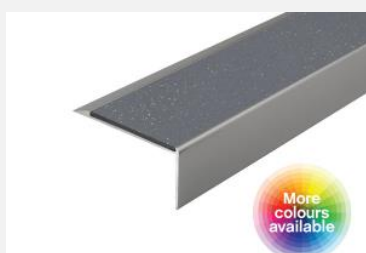


Aluminium Black ELOX Stair Nosing

40mm or 63mm width – 35mm height

Custom length with R10 PVC inserts

Available with screw opening or/and adhesive



Aluminium Grey ELOX Stair Nosing

40mm or 63mm width – 35mm height

Custom length with R10 anti-slip tape inserts

Available with screw opening or/and adhesive



ACCESSORIES

Having the right tools to install your tactile devices is just as important as picking the right stud, strip, or plate. All of our installation accessories have been identified and selected to achieve optimal results.



Superbond Epoxy Acrylate Anchor Resin

410mm tube

Fixes up to 60 single thread studs, 30 double thread or road studs

Requires applicator gun



Applicator Gun

For use with 380 to 410mm tube

Fixes up to 60 single thread studs, 30 double thread or road studs

Requires applicator gun



Extreme Concrete Drill Bit

12mm x 150mm

Tungsten carbide tip and titanium coating

Fits a standard 13mm chuck



Diamond Core Drill Bit

32mm x 150mm

Heavy duty laser welded steel body

13mm chuck adaptor



Diamond Core Drill Bit

32mm x 150mm

Heavy duty laser welded steel body

SDS Plus chuck adaptor



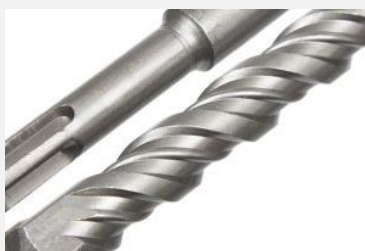
ACCESSORIES



Push Pump 190mm

Easy-to-use manual pump

Light and portable solution for clearing debris



SDS Concrete Drill Bit

12mm x 160mm

Tungsten carbide tip with titanium coating

SDS Plus chuck only



Steel Hole Cleaning Brush

13mm x 300mm

Wooden handle for comfortable use

Ideal for cleaning cavities prior to resin



DELIVERY & RETURNS INFO

UK Delivery

Delivery inside the UK mainland is free for orders over £100. Deliveries outside of the mainland - POA.

Delivery Rates:

Orders less than £20 - £5 carriage fee

Orders over £20 - £10.50 carriage fee

Orders over £100 – Free delivery

Europe and International Delivery

Delivery outside of the UK is subject to change according to the rates of the courier companies, accurate prices can be supplied at the point of inquiry.

In order for us to ship products outside of the UK the recipient will need an EORI (Economic Operator Registration and Identification) number. This applies to both Europe and countries further afield.

All orders are subject to customs fees and duties to be settled by the customer.

For more information on delivery – [Click here](#)

Returns

Any items returned should be in the same condition they were originally sent out in. Once received and assessed as saleable the refund will be processed at which point the customer will be notified.

All returns are subject to a 15% restocking fee, both delivery and return shipping costs are non-refundable.

For more information on returns – [Click here](#)



Email: sales@studmarc.com

Telephone: [01686 807450](tel:01686807450)