

**DEWALT**

**STANLEY**

**BSiDS**

**2026 BSiDS - DEWALT - STANLEY  
PRODUCT ASSORTMENT**

A  **BULL SALES** COMPANY

# INDEX

## ALL OUR RANGE HAS TO OFFER

VACUUMS - SNOW SHOVEL - AIR MOVERS - COOLERS - FANS	03
LED LIGHTING	16
RATCHET & UTILITY STRAPS - BUNGEE CORDS	18
DRINKWARE & COOLERS	25
MOBILE SOLUTIONS	28
MATERIAL HANDLING	37
FALL PROTECTION - DROP PREVENTION	42
JACKS & AXLE STANDS	45
TV MOUNTS & SHELVES	48

### CONTACT US

**866-987-2855**

[orders@bsids.ca](mailto:orders@bsids.ca)

[www.bsids.ca](http://www.bsids.ca)



# DEWALT®

## VACUUMS - SHOVELS - AIR MOVERS - COOLERS



# FLEXVOLT 12" BRUSHLESS SNOW SHOVEL

(TOOL ONLY)



**DXSVXA6016-001B**

**MSRP \$349.99**

AVAILABLE  
**Q3**  
2026

## FEATURES & SPECS

- Voltage: 60V Max.\*
- Cleaning Width: 12 inch
- Cleaning Depth: 6 inch
- Snow Guide : 60 degree
- Max. Working Time: 20min@12Ah
- Max. Throwing Distance : 25ft.
- Noise: ≤70dB(A)

**TWO-SPEED SELECTOR**  
TO SWITCH WORKING MODES FREELY.

**ERGONOMIC AND BALANCED DESIGN**  
TO HELP YOU MOVE FREELY

**THE ADJUSTABLE SNOW DEFLECTOR**  
LETS YOU CONTROL THE DIRECTION OF  
SNOW REMOVAL

**WIDER 12"**  
CLEANING WIDTH  
COVERS MORE GROUND

**FLEXVOLT®**  
60V MAX\* SYSTEM  
PROVIDES HIGHER  
PERFORMANCE AND  
LONGER RUNTIME

**ERGONOMIC & ADJUSTABLE POLE**  
TO FIT YOUR HEIGHT

**HIGH-EFFICIENCY BRUSHLESS MOTOR**  
TO MAXIMIZE RUNTIME AND  
MOTOR LIFE



# 20V BRUSHLESS SNOW SHOVEL

(TOOL ONLY)

**DXSVXA2016-002B**

**20V** MAX\*

**MSRP \$229.99**

AVAILABLE  
**Q3**  
2026



## TOP SPECS



## FEATURES

- A** PART OF THE 20V MAX\* SYSTEM OF TOOLS
- B** ERGONOMIC ADJUSTABLE LENGTH POLE TO FIT YOUR HEIGHT
- C** LIGHTWEIGHT AND ERGONOMIC WITH A BALANCED DESIGN TO HELP YOU MOVE FREELY
- D** HIGH-EFFICIENCY BRUSHLESS MOTOR TO MAXIMIZE RUNTIME AND MOTOR LIFE
- E** 10" CLEANING WIDTH AND 6" CLEANING DEPTH FOR MAXIMUM WORKING EFFICIENCY
- F** ADJUSTABLE SNOW GLIDE PLATES THROW SNOW IN THE DESIRED DIRECTION
- G** POWERFUL MOTOR THROWS SNOW 20 FT HIGH

# 20V POWERED SWEEPER

(TOOL ONLY)

**DXSBXA2017-002B**

**20V** MAX\*

**MSRP \$349.00**

AVAILABLE  
**Q3**  
2026



## TOP SPECS



## FEATURES

- A** PART OF THE 20V MAX\* SYSTEM OF TOOLS
- B** ERGONOMIC ADJUSTABLE LENGTH POLE TO FIT YOUR HEIGHT
- C** LIGHTWEIGHT AND ERGONOMIC WITH A BALANCED DESIGN TO HELP YOU MOVE FREELY
- D** HIGH-EFFICIENCY MOTOR TO MAXIMIZE RUNTIME AND MOTOR LIFE
- E** DURABLE REAR WHEELS FOR SMOOTH AND EASY MANEUVER

# PORTABLE AIR COOLER (TOOL ONLY)

**MSRP \$359.99**

**DXACN01**



## FEATURES

- A** USB AND TYPE-C PORTS ALLOWS THE CHARGE OF MOBILE DEVICES
- B** 3-SPEED SETTINGS TO ADJUST THE AIRFLOW AS NEEDED.
- C** FLEXIBLE HOSE
- D** POSITIVE LID LATCHES FOR SECURE LOCK.
- E** DRAIN PORT
- F** LARGE FLIP-UP HANDLE AND CASTERS FOR EASE OF MOVEMENT AND STORAGE.
- G** ONBOARD BOTTLE STORAGE.
- H** DC 20V BATTERY PACK

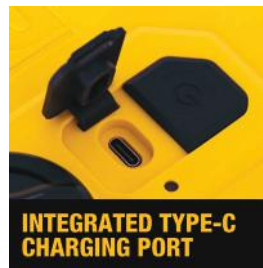
## TOP SPECS



## PRODUCT SPECIFICATION

**DXACN01**

MOTOR TYPE	DC20V
CAPACITY	7.82Gal
SPEED SETTING	3
RUNTIME	65min@2Ah
WIND SPEED	15.7MP
MIN.TEMPERATURE OF AIR OUTLET	45.5 °F
NOISE LEVEL**	≤58dBA
COOLING TYPE	FAN
PACKING SIZE	26×16.5×20inch
TYPE-C	YES



# STEALTHSONIC WET & DRY VACUUMS WITH QUIET TECHNOLOGY



- ### FEATURES
- A** QUIET TECHNOLOGY PROVIDES 50% QUIETER\*\*\* OPERATION
  - B** POWER CORD WRAP REDUCE OVERALL STORAGE SPACE
  - C** LARGE ON/OFF SWITCH WITH WATER-RESISTANT DESIGN
  - D** HOSE STRAP FOR EASY CORD ORGANIZATION
  - E** QUICK-CONNECT LOCKING HOSE SYSTEM FOR EASY BUT SECURE CONNECTION
  - F** RUBBERIZED NON MARRING CASTERS FOR SMOOTH & EASY MOVEMENT ACROSS ALL SURFACES
  - G** BUILT-IN DRAIN PORT FOR CONVENIENT LIQUID DRAINING

PART #	MSRP
DXV05PQT	\$159.99
DXV09PQTA	\$189.99
DXV12PQTA	\$219.99
DXV16PQTA	\$329.99

PRODUCT SPECIFICATION	120v~ 60Hz			
	DXV05P-QT	DXV09P-QTA	DXV12P-QTA	DXV16P-QTA
CAPACITY*	5GAL.	9GAL.	12GAL.	16GAL.
PEAK HP**	4.0	5.0	5.5	6.5
TANK MATERIAL	POLY	POLY	POLY	POLY
AIR FLOW	85CFM	90CFM	105CFM	135CFM
SEALED PRESSURE	68"	70"	72"	75"
CORD LENGTH	10'	10'	20'	20'
HOSE DIAMETER	1-7/8"	1-7/8"	2-1/2"	2-1/2"
HOSE LENGTH	7'	7'	7'	7'

### TOP SPECS

UP TO  
**50% QUIETER**  
↑ MORE POWERFUL ↓

UP TO  
**3.0X LONGER LIFETIME**



# WET & DRY VACUUMS

**DXV10PL** 10 GAL.

**DXV08S** 8 GAL.  
SS VAC

**DXV06G** 6 GAL.  
WALL VAC



**POWER CORD WRAP**  
REDUCES OVERALL STORAGE SPACE



**LARGE WATER-RESISTANT ON/OFF SWITCH** DESIGN FOR QUICK ACCESS



**LARGE LID LATCHES**  
TO SECURE LID TO THE TANK



**QUICK-CONNECT LOCKING HOSE SYSTEM** FOR EASY BUT SECURE CONNECTION

PART #	MSRP
DXV10PL	\$189.99
DXV08S	\$139.99
DXV06G	\$239.99

## FEATURES

- A** STURDY HANDLE FOR EASY CORD ORGANIZATION
- B** POWERFUL BLOWER PORT INSTANTLY CONVERTS THE VACUUM INTO A BLOWER
- C** LARGE ON/OFF SWITCH WITH WATER-RESISTANT DESIGN FOR QUICK ACCESS
- D** HOSE STRAP FOR EASY CORD ORGANIZATION
- E** QUICK-CONNECT LOCKING HOSE SYSTEM FOR EASY BUT SECURE CONNECTION
- F** RUBBERIZED NON MARRING CASTERS FOR SMOOTH & EASY MOVEMENT ACROSS ALL SURFACES
- G** BUILT-IN DRAIN PORT FOR CONVENIENT LIQUID DRAINING
- H** ACCESSORY STORAGE BAG FOR EASY TO REACH ACCESSORIES

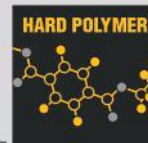
## TOP SPECS



**WATERPROOF SWITCH**



**HOSE STRAP**



**HARD POLYMER**



**RUBBERIZED CASTERS**



**BUILT IN DRAIN PORT**



**BLOWER PORT**

# DETACHABLE POLY WET/DRY VACUUM

**MSRP** \$249.99

**DXV212P**



**LARGE ON/OFF SWITCH**

**QUICK CONNECT LOCKING BLOWER PORT**

**HOSE HOLDER**

**QUICK CONNECT LOCKING VACUUM PORT**

**HANDLE**

**POWERFUL 5.5 HORSEPOWER\*\* MOTOR**

**12 GALLON\* POLY WET/DRY VACUUM**

**DRAIN PORT**

**HEAVY-DUTY SWIVELING CASTERS**

## PRODUCT SPECIFICATION

**DXV212P**

<b>CAPACITY</b>	12 Gallon
<b>POWER &amp; VOLTAGE</b>	120V 60Hz
<b>TANK MATERIAL</b>	Polymer
<b>AIR FLOW</b>	160 CFM
<b>SEALED PRESSURE</b>	55" H2O
<b>CORD LENGTH</b>	20'



## 6 GAL DUST SEPARATOR

**DXVCS002**

- Strong & durable polymer
- Removes up to 99.5% of dust and debris from the airstream, preventing suction loss and clogged air filter.
- Compatible with most brands vacuum hoses
- Swiveling casters provide ease of movement
- Helps extend life of filter

**MSRP \$99.99**



## 4 GAL STAINLESS STEEL ASH VAC

**DXV04A**

- Heat-resistant metal hose
- Aluminum extension wand
- Includes: 4 ft Metal Hose DXVA25-1043, Aluminum Extension Wand DXVA25-1042, Cartridge Filter DXVA25-1041, Pre-filter DXVA25-1040, Product Manual
- 4 Peak HP

**MSRP \$99.99**

AVAILABLE  
**Q3**  
2026



## WET / DRY VACUUM PUMP

**DXVPA101**

- Front mounted water-proof on/ off switch for easy access
- Unique bone-shaped design for easy cord wrapping
- Multiple adaptors included to fit most drain port sizes
- Integrated strainer protects pump from large debris
- 19 ft. extra long cord with GFCI

**MSRP \$89.99**

AVAILABLE  
**Q3**  
2026



WATER-PROOF  
ON/OFF SWITCH



UNIQUE  
BONE-SHAPED  
DESIGN

INTEGRATED  
STRAINER

FLOW VALVE

COUPLER

ADAPTER

### ACCESSORIES INCLUDED

3 Adaptors and a Drain cover



# 1 GAL DC BACKPACK VACUUM

**DXCVXA01B**



- Quick-connect Hose System
- 20V Battery (Detachable), Brushless Motor
- HEPA Filter, Dust Tank Switch
- Wide And Sturdy Handle
- Easily Accessible On/Off Switch And Power Settings
- Wall-mount Hook

**MSRP \$349.00**

AVAILABLE  
**Q2**  
2026



**ACCESSORIES INCLUDED**



# AC/DC WET/DRY VACUUM

- Operates either with 20v battery or plugged into wall.
- Powerful 580W in DC mode, 1200W AC mode.
- 110cfm air flow, 76 dBA sound with 10' power cord
- 18 min run time with 8ah battery.
- Complete with cartridge filter, cart, 2-1/2" x 9' flexible hose, 2 extension wands, crevice tool, floor brush, foam filter and disposable dust bag.



AVAILABLE  
**Q2**  
2026



PART #	SIZE	MSRP
DXCVXA092B	9 GAL	\$399.00
DXCVXA122B	12 GAL	\$419.00

## VACUUM ACCESSORIES

### STANDARD

**DXVC6910**  
CARTRIDGE FILTER



6-16 GAL.

**DXVC4001**  
CARTRIDGE FILTER



4-8 GAL.

### FINE

**DXVC6912**  
CARTRIDGE FILTER



6-16 GAL.

**DXVC4002**  
CARTRIDGE FILTER



4-8 GAL.

### HEPA

**DXVC6914**  
CARTRIDGE FILTER



6-16 GAL.

**DXVC4003**  
CARTRIDGE FILTER



4-8 GAL.

### STANDARD

**DXVA19-4101**  
DISPOSABLE DUST BAG



6-10 GAL.

**DXVA19-4102**  
DISPOSABLE DUST BAG



12-16 GAL.

**DXVA19-4104**  
DISPOSABLE DUST BAG



5-8 GAL.

**DXVA25-4040**  
DISPOSABLE DUST BAG



4 GAL.

### HIGH EFFICIENCY

**DXVA19-4111**  
DISPOSABLE DUST BAG



6-10 GAL.

**DXVA19-4112**  
DISPOSABLE DUST BAG



12-16 GAL.

**\*ALL BAGS COME IN PACKS OF 3**

# VACUUM ACCESSORIES

## LIGHTWEIGHT DUST COLLECTOR

**DXVA00-1500**

### TOP SPECS



## PIVOTING EXTENSION WANDS

**DXVA00-1200**

### TOP SPECS



## MAGNETIC UTILITY NOZZLE

**DXVA00-1501**

### TOP SPECS



## ERGONOMIC CLAW UTILITY BRUSH

**DXVA00-4300**

### TOP SPECS



## VACUUM HOSES

**DXVA19-2500**  
1-7/8" X 7' (DURABLE)



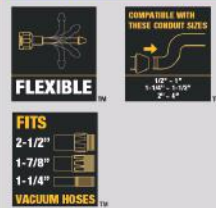
**DXVA19-2501**  
2-1/2" X 7' (DURABLE)



## CONDUIT LINE PULLER KIT

**DXVA00-0301**

### TOP SPECS



PART #	MSRP
DXVC6910	\$29.99
DXVC6912	\$44.99
DXVC6914	\$64.99
DXVC4001	\$22.99
DXVC4002	\$33.99
DXVC4003	\$39.99
DXVA19-4101	\$21.99
DXVA19-4102	\$24.99
DXVA19-4104	\$20.99
DXVA25-4040	\$16.99

PART #	MSRP
DXVA19-4111	\$29.99
DXVA19-4112	\$34.99
DXVA00-1500	\$49.99
DXVA00-1200	\$59.99
DXVA00-1501	\$44.99
DXVA00-4300	\$39.99
DXVA00-0301	\$89.99
DXVA19-2500	\$39.99
DXVA19-2501	\$44.99

## 600 CFM - 1/5 HP AIR MOVER

### DXAM2260

- (A) 3-speed operation to conveniently control air flow
- (B) Sturdy handle for easy lifting & carrying
- (C) 3 user positions, flat, 45 degrees & 90 degrees
- 10' power cord with built-in wrapping
- 1/5 HP
- 60 dB(A)



## 1800 CFM - 3/4 HP AIR MOVER

### DXAM2818

- 3-speed operation to conveniently control air flow
- Sturdy cart style handle with large rubber wheels
- 2 user positions, flat & 90 degrees
- 30' power cord with built-in wrapping
- 3/4 HP
- 70 dB(A)



## MINI INFLATOR - POWERBANK

### DXIF1201

- Inflator + Power Bank is a compact, all-in-one tool for emergencies and everyday use.
- Detachable 10 ft. 12V cigarette lighter cord, a powerful built-in 7500mAh battery
- USB Type C charging cord, it delivers up to 150 PSI for quick inflation.
- Features include a digital display, auto shut-off, LED lights, and multiple nozzles, plus charging options for your devices.
- Includes presta valve adapter, ball needle, universal adapter, inflator adapter, extra fuse, cigarette lighter cord, USB type-c cord, inflatable hose

**MSRP \$69.99**

AVAILABLE  
**Q3**  
2026



### ACCESSORIES INCLUDED



# 3-SPEED HANGING DUST COLLECTOR

**MSRP** \$429.00

**DWXAF101**



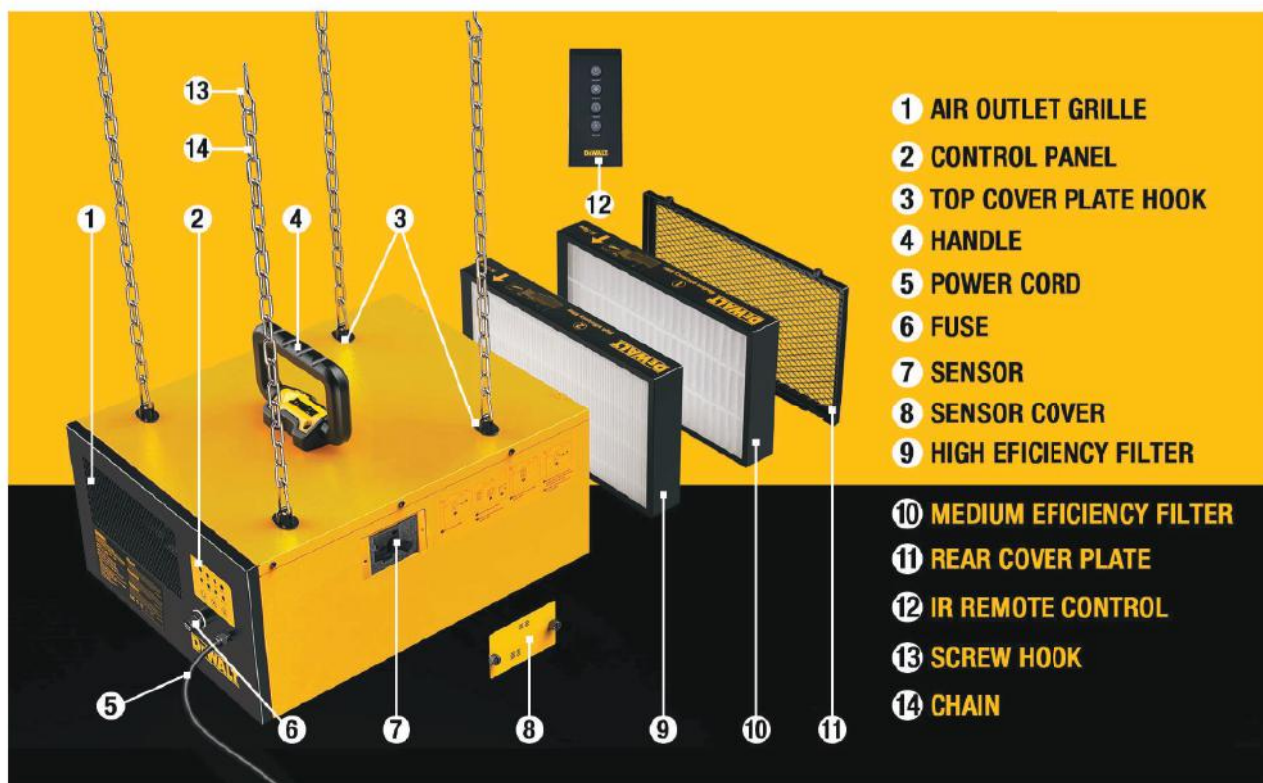
PART #	FILTER TYPE	MSRP
DXVC3902	HIGH EFFICIENCY FILTER	\$39.99
DXVC3903	H11 HEPA FILTER	\$54.99

## PRODUCT SPECIFICATION 120V 60Hz

DWXAF101	
PARTICLE CLEAN AIR DELIVERY RATE	Up to 251
AIR FLOW (CFM) WITHOUT FILTERS	160 / 215 / 251
EFFECTIVE AREA (M <sup>2</sup> )	MAX.30 (5X Hour)
TIMER	1/2/4/8H
SPEED CONTROL	3
PEAK AIR WATTS (W)	90
IR CONTROL	YES
AUTOMATIC ADJUSTMENT	YES
LED INDICATOR	YES
DUST SENSOR	YES

## FEATURES

- A** FILTER REPLACEMENT REMINDER HELP TO KEEP THE BEST PERFORMANCE
- B** FEATURES A DUST SENSOR FOR AUTOMATIC AIR QUALITY MONITOR AND FILTRATION
- C** AUTO ADJUST MODE FOR EASY OPERATION
- D** 4 HANG CHAINS FOR EASY STORAGE
- E** 3-SPEED ADJUSTMENT TO SATISFY DIFFERENT NEEDS



- 1** AIR OUTLET GRILLE
- 2** CONTROL PANEL
- 3** TOP COVER PLATE HOOK
- 4** HANDLE
- 5** POWER CORD
- 6** FUSE
- 7** SENSOR
- 8** SENSOR COVER
- 9** HIGH EFFICIENCY FILTER
- 10** MEDIUM EFFICIENCY FILTER
- 11** REAR COVER PLATE
- 12** IR REMOTE CONTROL
- 13** SCREW HOOK
- 14** CHAIN

# CLEAN AND COOL AIR 16" AIR CLEANER FAN

**DXF1612**

**MSRP \$249.99**



### AVAILABLE AIR FILTERS

APPLICATION: ● YES ● NO

	NAME	WET DEBRIS/ LIQUIDS	SAWDUST/ WOOD CHIPS	CONCRETE DUST	COLD FIREPLACE/ GRILL ASH	POLLEN/ ALLERGENS	FINE INDOOR PARTICLES (PET DANDER, DRYER LINT)
DXFA4101	UNIVERSAL CARTRIDGE FILTER	●	●	●	●	●	●
DXFA4102	HIGH-EFFICIENCY CARTRIDGE FILTER	●	●	●	●	●	●
DXFA4103	HEPA CARTRIDGE FILTER	●	●	●	●	●	●

PART #	TYPE	MSRP
DXFA4101	UNIVERSAL	\$39.99
DXFA4102	HIGH-EFFICIENCY	\$49.99
DXFA4103	HEPA	\$59.99

### FILTER INSTALLATION



### HOW IT WORKS



# PORTABLE COMFORT 18" AC/DC FAN

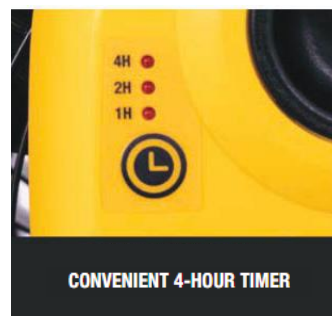
**DXF1850B**

**MSRP \$239.99**



### FEATURES & SPECS

<b>AIR FLOW**</b>	4000 CFM
<b>VOLTAGE/POWER</b>	20V Max* / 120V 60Hz
<b>SPEED</b>	3-Speed
<b>TILTING ANGLE</b>	270°
<b>RPM</b>	950RPM
<b>NOISE***</b>	≤60 dB(A)
<b>CORD LENGTH</b>	6ft.
<b>TIMER</b>	4 Hours



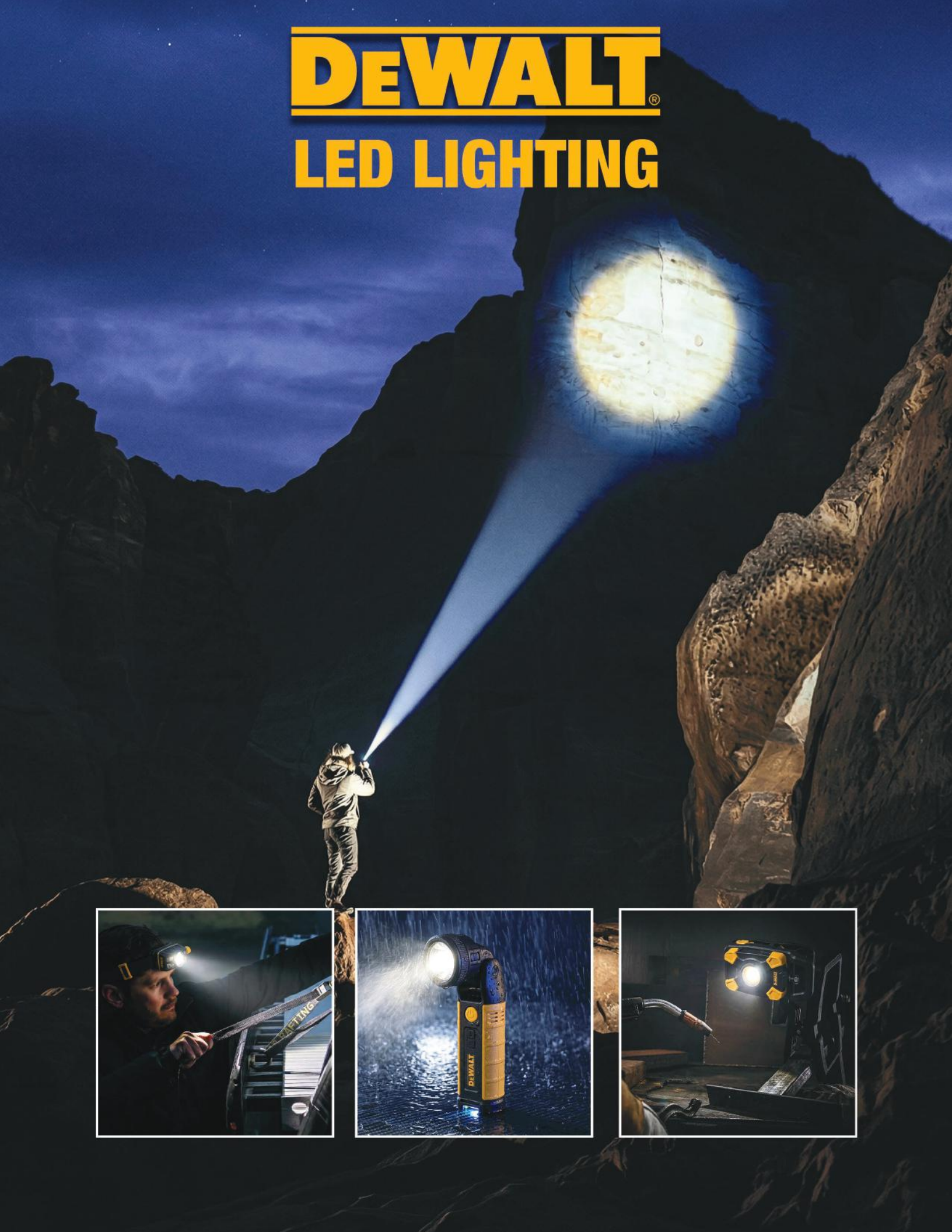
CONVENIENT 4-HOUR TIMER



270-DEGREE TILTING FAN HEAD

# DEWALT<sup>®</sup>

## LED LIGHTING



## RECHARGEABLE WATERPROOF 450 LUMEN HEADLAMP

**DXCLXA110**

- 450LM, 6000-7000K, 3.7, 1200mAh Li-ion. Approx. 3-8 hours Operating Time
- 60° Adjustable bracket, adjustable focal length, motion sensor.
- Charging indicator LED red to green (fully charged)
- Charging cable included

**MSRP \$49.99**

AVAILABLE  
**Q2**  
2026



## USB-C RECHARGEABLE FOLDABLE FOCUS 900 LUMEN FLASHLIGHT

**DXCLXA120**

- 900LM, 6000-7000K, 3.7V 2600mAh Li-ion. Approx. 3-12 hours Operating Time
- Spot beam & flood beam, 180° rotating head.
- High-efficiency & low power consumption, battery level display
- Super strong magnetic base
- Charging cable included

**MSRP \$59.99**

AVAILABLE  
**Q2**  
2026



## RECHARGEABLE 1500 LUMEN PRO 360° CLIP LIGHT

**DXCLXA140**

- 1500LM, 6000-7000K, 3.7V 5200mAh Li-ion. Approx. 3-12 hours Operating Time
- Clip firmly & adjust the light source flexibly
- Horizontal 360° rotation
- Portable / Compact
- Charging cable included

**MSRP \$89.99**

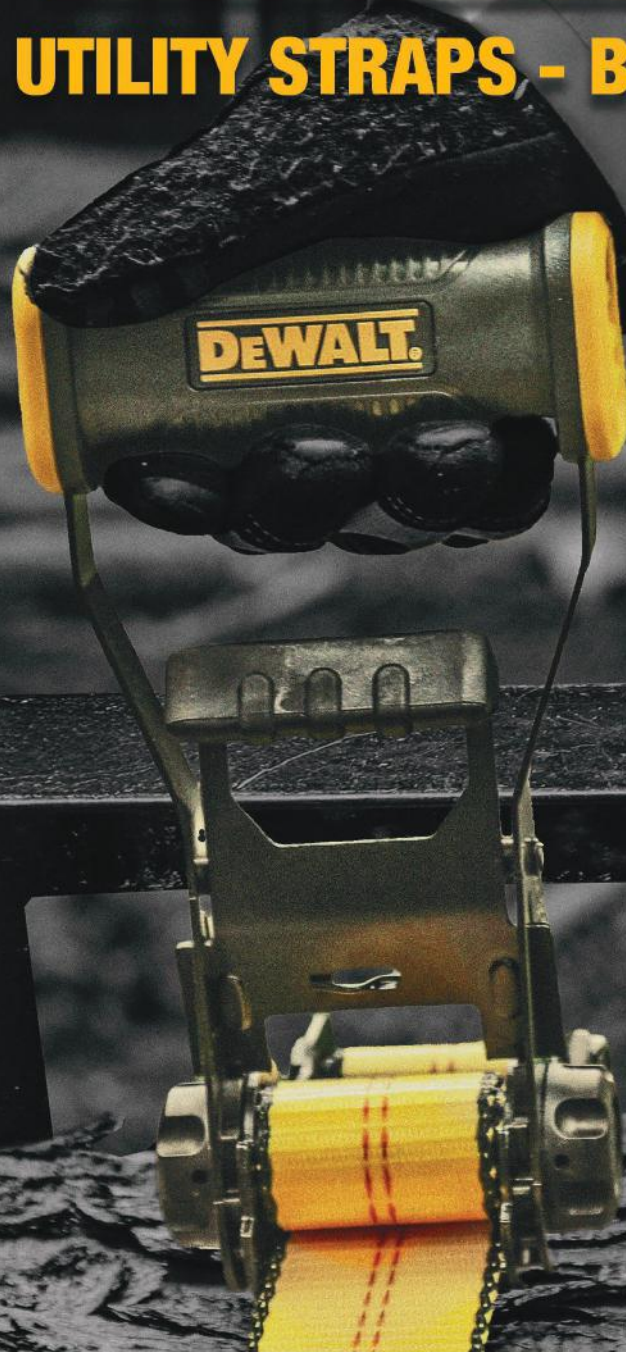
AVAILABLE  
**Q2**  
2026



**360°**  
ROTATION

# DEWALT®

## RATCHET & UTILITY STRAPS - BUNGEE CORDS



## 1,800 LBS RATCHET STRAP

- Weather resistant metal ratchet components and weather resistant polyester straps
- Measures 1.25" wide x 12' long
- Non-mar, coated S-hooks
- Armored side caps - help keep out weather & debris



DISPLAY BOX (PDQ)



4 PER CASE

PART #	LBS	QTY	MSRP
DXBC 18002	1800	2 PACK	\$34.99
DXBC 18004	1800	4 PACK	\$64.99

## 1,500 LBS RATCHET STRAP

**DXBC15006X 6 PACK**

- Weather resistant metal ratchet components and weather resistant polyester straps
- Reinforced release pad
- Measures 1" wide x 10' long
- Non-mar, coated S-hooks
- Armored side caps - help keep out weather & debris
- Comes in 6 pcs clam pack & includes storage bag

**MSRP \$54.99**



## 3,000 - 5000 LBS RATCHET STRAPS

- Weather resistant metal ratchet components and weather resistant polyester straps
- Measures 1.5" wide x 16' long
- Features a quick connect D-ring feature / additional versatile Cargo management anchor point
- Non-mar, coated double J-hooks
- Armored side caps - help keep out weather & debris



QUICK CONNECT D-RING

DISPLAY BOX (PDQ)



4 PER CASE

PART #	LBS	QTY	MSRP
DXBC 33002	3000	2 PACK	\$44.99
DXBC 33004	3300	4 PACK	\$84.99
DXBC 50002	5000	2 PACK	\$59.99



**MAX 500 LBS**  
226.8 kg / WORK STRENGTH™

**MAX 1500 LBS**  
680.39 kg / BREAK STRENGTH™

DISPLAY BOX (PDQ)



4 PER CASE

### SPECIFICATIONS

<b>STRAP LENGTH</b>	10' (3.048 M)
<b>STRAP WIDTH</b>	1.0" (2.54 cm)
<b>SAFE WORKING LOAD</b>	500 lbs (226.8 kg)
<b>BREAK STRENGTH</b>	1500 lbs (680.39 kg)
<b>HOOK STYLE</b>	Coated S-hooks

## 10,000 LBS RATCHET STRAP

### **DXBC10000J** 1 PACK

- Weather resistant metal ratchet components and weather resistant polyester straps
- Measures 2" wide x 27' long
- Non-mar, coated double J hooks
- Armored side caps - help keep out weather & debris
- Lab tested 3333 lb safe working strength
- Lab tested 10000 lb break strength

**MSRP \$44.99**



DISPLAY BOX (PDQ)



6 PER CASE

## 10,000 LBS RATCHET STRAP

### **DXBC10000F** 1 PACK

- Weather resistant metal ratchet components and weather resistant polyester straps
- Measures 2" wide x 27' long
- Webbing Side Protection - extra black stitching for ultimate protection
- Non-mar, coated Flat hook
- Armored side caps - help keep out weather & debris
- Lab tested 3333 LB safe working strength
- Lab tested 10000 LB break strength

**MSRP \$44.99**



DISPLAY BOX (PDQ)



6 PER CASE

## 10,000 LBS CHAIN STRAP

### **DXBC10000C** 1 PACK

- Steel chains and grab hooks secure heavy-weight cargo loads
- Armored caps protect cargo and keep debris out
- Weather resistant webbing for added longevity
- Weather resistant metal ratchet components with UV and weather resistant polyester straps
- Measures 2 in. W x 30 ft. L
- Lab tested 3333 lbs. safe working strength
- Lab tested 10,000 lbs. break strength

**MSRP \$64.99**



DISPLAY BOX (PDQ)



4 PER CASE

## 3,300 LBS RETRACTABLE RATCHET

### **DXBC9002** 2 PACK

- Measures 2 in. W x 10 ft. L
- Stainless-steel retraction mechanism ensures smooth, durable retraction for easy strap storage and spring protection; Includes a padded quick-release that easily retracts extra strap length
- Full armor ratchet body and caps protect the retraction mechanism, metal ratchet components, and cargo for long-lasting use
- Weather-resistant straps feature highly visible reinforced edging and stitching; Coated s-hooks ensure a hold that will not mar or damage your vehicle or cargo

**MSRP \$84.99**



# 40,000 LBS RECOVERY STRAP

**MSRP** \$149.99

**DXBC40000**

**1 PACK**



## 2 & 4-PLY DESIGNS

Industrial strength strap offers high tensile strength, ready to execute extreme tow / recovery operations

## WEATHER-RESISTANT STRAP

Durable and reliable in various temperatures & weather conditions

## REINFORCED LOOPED ENDS

Black cloth loops protect strap from wear and provide additional reinforcement

## OVERSIZED PROTECTIVE SLEEVES

Helps protect the strap from rough surfaces, extending product lifespan

## SPECIFICATIONS DXBC40000

STRAP WIDTH	4.0" (10.16cm)
STRAP LENGTH	30' (9.14m)
SAFE WORKING LOAD	13333 LBS (6047.9kg)
BREAK STRENGTH	40000 LBS (18143.7kg)
ATTACHMENT STYLE	Reinforced Loop Ends

## FEATURES



LOOPED ENDS



PROTECTIVE SLEEVE



WEATHER RESISTANT

## PRODUCTS

**40000 LBS RECOVERY STRAP**  
**4" x 30'**

**DXBC40000**



## PREMIUM ROUND BUNGEE

- Overmolded steel core hooks that enhance the durability and strength of the bungee and are non-abrasive and rust-resistant
- Lined with grooves for easy gripping and handling when securing items
- Premium rubber core that outperforms standard bungees with superior elasticity, durability, and strength
- Added extra feature of a quick pull notch which interlocks to other DEWALT bungee cords for easy use and a firm hold



PART #	SIZE	QTY	MSRP
DXBC 300244	24"	4 PACK	\$16.99
DXBC 300364	36"	4 PACK	\$18.99
DXBC 300484	48"	4 PACK	\$21.99

## PREMIUM FLAT STRAP BUNGEE

- Overmolded steel core hooks that enhance the durability and strength of the bungee and are non-abrasive and rust-resistant
- Lined with grooves for easy gripping and handling when securing items
- Premium rubber core that outperforms standard bungees with superior elasticity, durability, and strength
- Added extra feature of a quick pull notch which interlocks to other DEWALT bungee cords for easy use and a firm hold

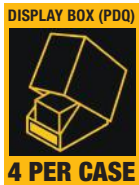


AVAILABLE  
**Q2**  
2026

PART #	SIZE	QTY	MSRP
DXBC 301424	24"	4 PACK	\$18.99
DXBC 301436	36"	4 PACK	\$20.99
DXBC 301448	48"	4 PACK	\$23.99

## NATURAL RUBBER TARP STRAP

- All sizes come in packs of 10.
- Natural rubber strap material delivers top-notch performance and flexibility for temperature and all-seasons weather resistance
- Galvanized, black-coated dual-layer S-hooks are corrosion-resistant and long-lasting for enduring outdoor elements
- Included rust-resistant black coated steel hooks are strong, versatile, and provide quick and easy fastening



AVAILABLE  
**Q3**  
2026

PART #	SIZE	MSRP
DXBC3001015	15"	\$25.99
DXBC3001021	21"	\$29.99
DXBC3001031	31"	\$34.99
DXBC3001041	41"	\$39.99

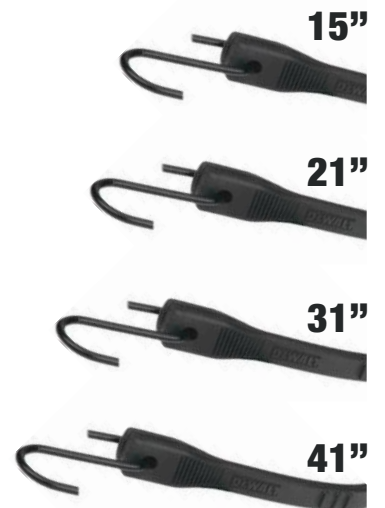
## NATURAL RUBBER TARP STRAP

### DXCSBC3001 MIXED 12 PACK

- Multi-size pack of 12.
- Natural rubber strap material delivers top-notch performance and flexibility for temperature and all-seasons weather resistance
- Galvanized, black-coated dual-layer S-hooks are corrosion-resistant and long-lasting for enduring outdoor elements
- Included rust-resistant black coated steel hooks are strong, versatile, and provide quick and easy fastening

**MSRP** \$39.99

AVAILABLE  
**Q3**  
2026



# 11,000 LBS PREMIUM SOFT LOOP

**DXBC80002 4 PACK**

- Highly visible, weather- and wear-resistant straps provide a strong anchor point for cargo bracing in vibrant DEWALT yellow
- Heavy-duty brushed polyester straps feature a soft, plush texture to prevent scratches or marks on equipment surfaces
- Pliable looped ends are used to loop inside themselves, creating a stable anchor point for fast, reliable tie-down attachment
- These soft loop anchor points, designed for heavy-duty cargo management, have a 3,667 lbs safe working load limit and an 11,000 lbs break strength.

**MSRP \$21.99**

AVAILABLE  
**Q3 2026**

DISPLAY BOX (PDQ)  
  
**12 PER CASE**



# 10,000 LBS PREMIUM AXLE STRAP

- Durable and versatile tool designed for securing cargo, vehicles, or equipment.
- Features heavy-duty webbing and reinforced D-rings for a secure hold.
- The DEWALT-branded protective sleeve adds extra durability while ensuring the strap remains intact during heavy use, making it an ideal choice for professional and personal hauling needs.
- Comes in a 1 pack.



DISPLAY BOX (PDQ)  
  
**6 PER CASE**

AVAILABLE  
**Q3 2026**


PART #	SIZE	LBS	MSRP
DXBC 80004	24"	10,000	\$12.99
DXBC 80003	36"	10,000	\$14.99

# PREMIUM UTILITY STRAPS

**DXBC90060 2 PACK**

- 1.25 in. coated black carabiner is versatile, secure and corrosion-resistant, quickly clip and connect components
- High-density polyester straps are weather-resistant, high-visible in color, and securely attached to the carabiner
- Reflective accent stitching runs along both sides of the 1.25 in. x 12 ft. straps, enhancing its visibility for safety in low-light conditions
- Securely sewn hook and loop fastening material is durable, reusable, and quickly adjustable from a 3 in. to 7 in. loop

**MSRP \$17.30**

DISPLAY BOX (PDQ)  
  
**12 PER CASE**



# 4" x 30' WINCH STRAPS

**DXBC90089 2 PACK**

- Designed for flatbed trailering, just loop these professional-grade straps into your winch tensioners or bed rails and safely secure your cargo.
- 5,500 lbs of safe working load and 16,500 lbs break strength ratings
- Steel flat hook on each strap is designed with a corrosion resistant black finish
- Professional Grade: Winch straps meet DOT regulations and WSTDA recommended standards

**MSRP \$59.99**



## 2" x 12' HEAVY DUTY LIFTING SLING

**DXBC90084 1 PACK**

- Built for durability and reliability in demanding tasks. Featuring reinforced looped ends with protective sleeves, it resists wear and ensures long-lasting performance.
- Highly visible sling features a 1-ply design, type 3, class 7 high tensile strength sling to handle heavy loads
- Professional-grade sling that meets the recommended standards set by WSTDA
- Practical use for cargo lifting, construction, rigging and more; Has a basket weight capacity of 6,400 lbs., vertical weight capacity of 3,200 lbs., and choker weight capacity of 2,560 lbs.

**MSRP \$34.99**

AVAILABLE  
**Q3**  
2026



## 2" x 16' HEAVY DUTY LIFTING SLING

**DXBC90085 1 PACK**

- Highly visible sling with a 2-ply, type 3, class 7 WSTDA design that has a high tensile strength to handle heavy loads; Designed specifically for cargo lifting, construction, rigging and more
- 2" x 16' sling has a basket weight capacity of 12,800 lbs, vertical weight capacity of 6,400 lbs, and choker weight capacity of 5,120 LBS.
- Reinforced Looped ends with black cloth sleeves and durable stitched edging protects the sling from wear and provides additional reinforcement

**MSRP \$44.99**

AVAILABLE  
**Q3**  
2026



## CAM BUCKLE S-HOOK, 2 PACK

- Armored rubber cam shroud shields cargo and vehicles from damage, while the large sure-grip thumb pad allows fast, confident tension adjustments
- Coated S-hooks provide a secure hold without marring or damaging the vehicle or cargo the pre-threaded, weather-resistant straps are wear-resistant, highly visible, and always ready to use
- Sewn-in pull loop is a convenient grip point at the end of the strap to tighten down cargo
- Hook and loop storage strap holds tight to keep the excess strap organized



PART #	SIZE	LBS	MSRP
DXBC 90042	1" x 12'	1500	\$25.99
DXBC 90043	1.25" x 14'	2000	\$29.99
DXBC 90044	2" x 10'	3000	\$39.99

## LASHING STRAP, 2 PACK

- Armored rubber cam shroud shields cargo and vehicles from damage, while the large sure-grip thumb pad allows fast, confident tension adjustments
- Sewn-in pull loop is a convenient grip point at the end of the strap to tighten down cargo
- Hook and loop storage strap holds tight to keep the excess strap organized



PART #	SIZE	LBS	MSRP
DXBC 90045	1" x 10'	1500	\$24.99
DXBC 90046	1.25" x 14'	2000	\$29.99
DXBC 90047	2" x 16'	3000	\$42.99

# DEWALT

## DRINKWARE & COOLERS



# DEWALT DRINKWARE

**BUILT TO WITHSTAND ALL TYPES OF  
DEMANDING CONDITIONS**

## PRODUCT FEATURES

- DUAL-WALL VACUUM INSULATION
- DURABLE 18/8 STAINLESS STEEL
- HOLDS INTERNAL TEMPERATURE
- PREVENTS CONDENSATION
- BPA-FREE
- REMOVABLE NON-SPILL LID
- LID FEATURES DEWALT LOGO

### PART #

### MSRP

DXC14CM (XX)

\$32.99

DXC200ZT (XX)

\$29.99

DXC300ZT (XX)

\$34.99

**1 YEAR LIMITED WARRANTY**

**14 OZ**



**DXC14CM BS**



**DXC14CM SS**



**DXC14CM YS**

**20 OZ**



**DXC200ZT BS**



**DXC200ZT SS**



**DXC200ZT YS**

**30 OZ**



**DXC300ZT BS**



**DXC300ZT SS**



**DXC300ZT YS**



# DEWALT COOLERS

**BUILT TO WITHSTAND ALL TYPES OF  
DEMANDING CONDITIONS**

## PRODUCT FEATURES

- ROTO MOLD DESIGN
- EASY-OPEN LID LATCHES
- REMOVABLE NYLON HANDLE STRAPS AND BUILT-IN SIDE HANDLES
- INTEGRATED BOTTLE OPENER
- RAM MOUNT SIDE RAILS FOR ATTACHING A VARIETY OF ACCESSORIES
- DRAIN PLUG

## PART #

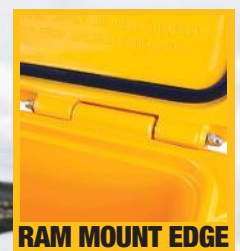
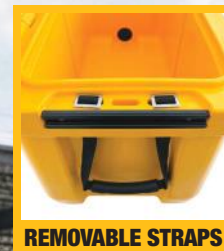
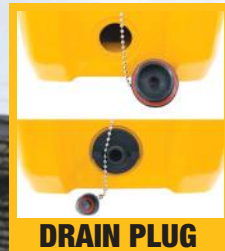
## MSRP

DXC45QT

\$299.00

DXC65QT

\$399.00



# DEWALT

## MOBILE SOLUTIONS



# PRO X-2 TRUE WIRELESS EARBUDS

**190 2097 DW2**

- Jobsite Pro X-2 ANC True Wireless Earbuds with Charging Case
- Featuring turn-dial controls, these durable earbuds allow you to change volume levels with the turn of a wheel.
- The rugged charging case stores and recharges the earbuds several times providing up to 40+ hours of runtime.
- In-Ear Smart Sensors that automatically pause when the earbuds are removed and resume play when worn.

**MSRP \$169.99**

## CARABINER LOOP CHARGING CASE



Bluetooth 5.3



# JOBSITE PRO WEARABLE SPEAKER

**MSRP \$99.99**

**190 1148 DW2**

- Pro audio sound for music and calls
- Ultra-light-weight at less than 2oz
- Oversized multi-function buttons for gloved hands
- Easy-open clip for 1-handed operation
- Detachable mounting magnet allows you to affix speaker anywhere



Bluetooth 5.0



## PRO-X1 TRUE WIRELESS EARBUDS

**190 2092 DW2**

- Jobsite PRO-X1 and charging case.
- In-Ear Smart Sensor pauses music when earbuds are removed
- Store and recharge the earbuds multiple times with the rugged charging case, and enjoy up to 30 hours of runtime.

**MSRP \$139.99**



 Bluetooth® 5.2



## JOBSITE PRO OPEN-EAR EARBUDS

**190 2096 DW2**

- Jobsite-Safe Open Ear Design & Charge Case
- Air Conduction Technology for crystal clear music and calls without compromising jobsite awareness
- Stable Comfort-Flex bands and avoid the discomfort of prolonged in-ear/over-ear headphone usage for the entire work day.
- With optimal sweat and water protection, these ultra-lightweight earbuds feature hidden buttons for a smooth appearance while allowing for intuitive operation of volume control and song selection.
- Long Battery Life – Up to 44 Hours

**MSRP \$179.99**



 Bluetooth® 5.3

## JOBSITE PRO WIRELESS EARPHONES

**190 2091 DW2 A**

- Lessen Loud Noises from Your Surroundings: Bluetooth wireless head set uses cVc 8.0 Noise Reduction Technology
- Listen All-Day With 30+ Hour Playtime
- Wireless Neckband So Lightweight and Comfortable
- Feel Protected With Dust/Water Resistance: Rated IPX6 for sweat and water resistance

**MSRP \$99.99**



 Bluetooth® 5.1



## PRO MAX NECKBAND EARPHONES

**190 2093 DW2**

- Wireless earbuds and built-in speakers.
- 60+ hours of earbud runtime and 7.5+ hours of speaker time
- Heavy-duty construction with IP56 water resistance ensures durability against sweat and moisture.
- Flexible neckband for comfort

**MSRP \$139.99**



 Bluetooth® 5.1



## 100W TYPE C TO TYPE C CABLE

- Extra thick nylon braided cable
- Reinforced with Kevlar for unparalleled longevity
- Support a max output of 100W to charge devices as large as laptops up to 10x the speed of a standard cable (when paired with 100W or above chargers)



PART #	LENGTH	MSRP
131 0006 DW2	4 FT	\$29.99
131 0007 DW2	6 FT	\$34.99

## 60W TYPE C TO TYPE C CABLE

### 131 0021 DW2

- 10 foot length
- Extra thick nylon braided cable
- Connection A: Type C
- Connection B: Type C
- Reinforced with Kevlar for unparalleled longevity

**MSRP \$29.99**



## 15W TYPE C TO USB CABLE

- Reinforced Braided Cable for Type C to USB
- Withstand bending and feature a braided plastic outer jacket, making them highly resistant to abrasion and breakage under harsh conditions.



PART #	LENGTH	MSRP
131 1361 DW2	4 FT	\$19.99
131 1348 DW2	6 FT	\$24.99
131 1349 DW2	10 FT	\$29.99

## 20W USB-C TO LIGHTNING CABLE

### 131 1357 DW2

- Reinforced USB-C to lightning cables have male connectors on both ends that connect to devices
- They withstand bending and feature a braided plastic outer jacket, making them highly resistant to abrasion and breakage under harsh conditions.
- 4' length

**MSRP \$34.99**



## 60W USB-C TO USB CABLE

- Wiring reinforced with Kevlar® fiber to resist wear and tear from repeated bending and flexing
- Braided nylon jacket resists scuffs and tangles



PART #	LENGTH	MSRP
131 1362 DW2	4 FT	\$19.99
131 1354 DW2	6 FT	\$26.99

## 20W USB TO LIGHTNING CABLE

- Reinforced Braided Cable for Lightning connection
- Wiring reinforced with Kevlar® fiber to resist wear and tear from repeated bending and flexing
- Braided nylon jacket resists scuffs and tangles
- Durable polyester



PART #	LENGTH	MSRP
131 1359 DW2	4 FT	\$24.99
131 1325 DW2	6 FT	\$34.99
131 1326 DW2	10 FT	\$39.99

## 3 IN 1 SPLITTER TYPE C - 6 FT

**131 0099 DW2**

- 100 W, 3 in 1 splitter
- Type C to Type C
- 6 ft

**MSRP \$44.99**

AVAILABLE  
**Q2**  
2026



## 4-PORT PD CHARGING STATION

**131 1328 DW2**

- 4-Port USB C Charging Station: Charge up to four devices at once with 3 Type-C and 1 USB ports, ideal for powering up all your essential tools, devices, and accessories
- 100W Smart Power Sharing: Efficiently distributes power based on device requirements for fast, optimized charging of headphones, iPhone 16/15/14/13, Galaxy models, Pixel 4/3, tablets, laptops and more
- 6ft Extended Power Cord - Provides increased reach and flexibility, allowing easy access to power from the 100W USB C charger on any table or work surface

**MSRP \$139.99**



## 2-PORT 100W GAN WALL CHARGER

**131 0874 DW2**

- 100W 2-Port GaN PPS PD Wall Charger
- Advanced Gallium Nitride technology allows for lightning-fast charging speeds of up to 100W
- Two USB-C ports with Power Delivery technology enable simultaneous charging of multiple devices
- Features a durable and heat-resistant casing and advanced safety features for protection against overvoltage and short-circuits

**MSRP \$119.99**



## 2 PORT USB C WALL CHARGER

**131 0038 DW2**

- NEVERBLOCK® 2-port worksite USB charger
- Angled charging ports won't block adjacent outlets
- Charger provides current up to 2.4A
- Folding power plug allows for convenient transportation and storage

**MSRP \$39.99**



## MAGNETIC WIRELESS CHARGER

**141 0006 DW2**

- 15W Wireless Charging with Magnetic Alignment: Compatible with MagSafe
- Wall mount charger's easy slide-in bracket design
- Hassle-Free Installation: The included screws (4mm/M4) and drywall anchors ensure a hassle-free installation and secure fit
- Robust Metal Construction: Crafted from durable metal, this charger mount combines strength with modern style for long-lasting performance

**MSRP \$59.99**



## MAGNETIC DASH & VENT

**204 0017 DW2**

- This kit includes our rugged vent and dash mounts along with the special mounting bracket designed for the included DEWALT Magnetic Wireless Charging Disc; and a 2-in-1 charging cable & bonus dashbord mount
- Magsafe-friendly 360 rotation
- Up to 15w charging
- Continue charging on and off the mounts with the DEWALT Magnetic Wireless Charging Disc

**MSRP \$69.99**



## 3-PORT 65W PD CAR CHARGER

**141 0036 DW2**

- Powerful 65W PD Fast Charging
- 3-Port Design for Multi-Device Use: Features 2 USB-C PD ports and 1 USB-A QC port
- Smart PPS/PD Technology
- Durable Compact Design
- Universal Compatibility

**MSRP \$49.99**



## 2-PORT PD CAR CHARGER

**141 0479 DW2**

- USB + USB C PD car charger adapter, featuring 49.5 W PD and PPS 30 W quick charge 3.0 for fast and efficient charging.
- Built to endure the demands of daily life, our charger features a sturdy design that ensures reliability and longevity, making it the ideal travel companion or everyday essential.

**MSRP \$44.99**



## 120W 2-PORT PD CAR CHARGER

**141 0484 DW2**

- 120W 2-Port PPS PD Car Charger
- Charges all devices (phones, tablets, laptops, and DEWALT batteries) up to 70% faster than standard chargers
- Simultaneously charge 2 devices with PPS PD 3.0 Rapid Charging up to 120W
- Officially certified for safety and speed so you experience maximum resilience on the jobsite

**MSRP \$84.99**



## 4-PORT MOBILE USB PD CHARGER

**141 9009 DW2**

- 60W Total Power
- Simultaneous charging
- 4-port car charger
- Fast-charging cigarette lighter adapter
- Heavy-duty construction

**MSRP \$54.99**



# DEWALT MOBILE SOLUTIONS DISPLAYS

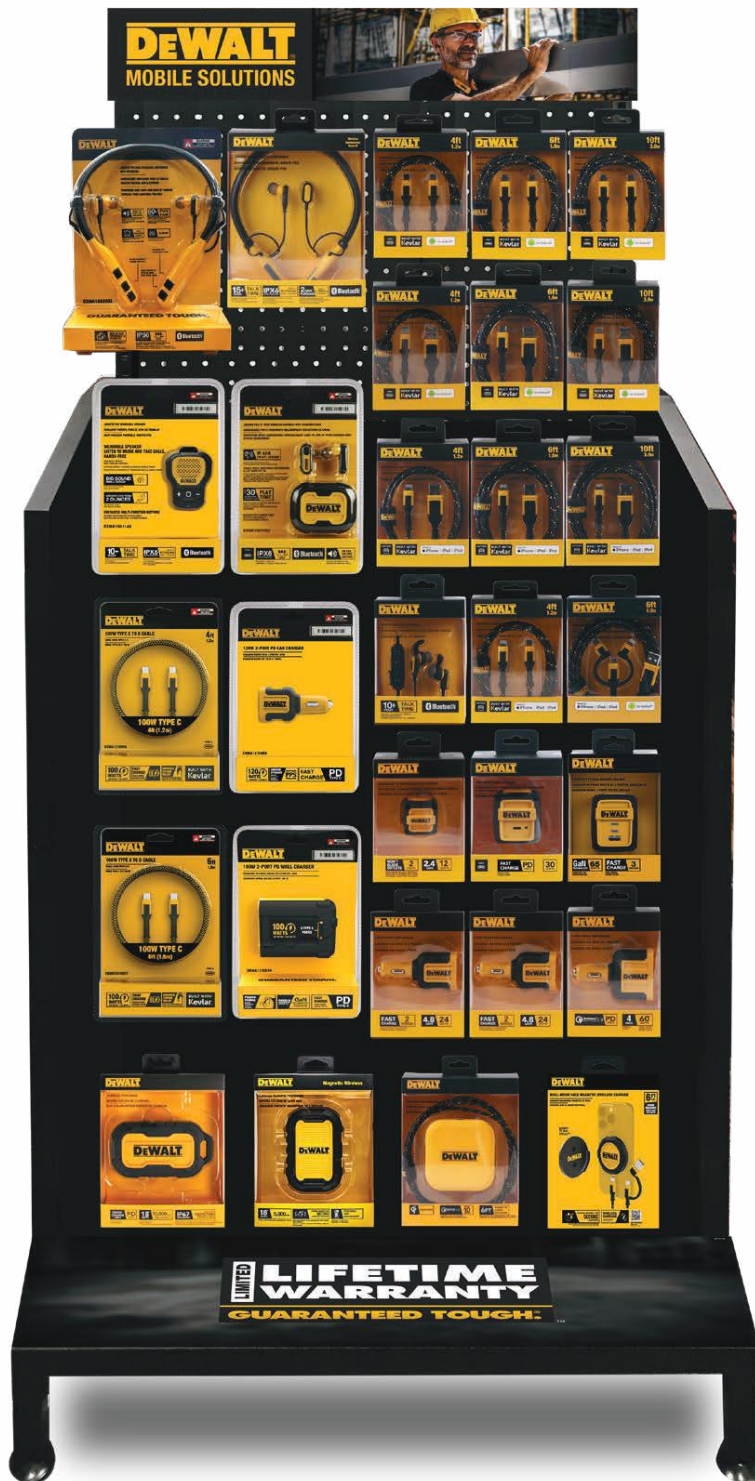


**COUNTERTOP SPINNER**  
**700 0047 DW**



**FLOOR SPINNER**  
**700 0063 DW**

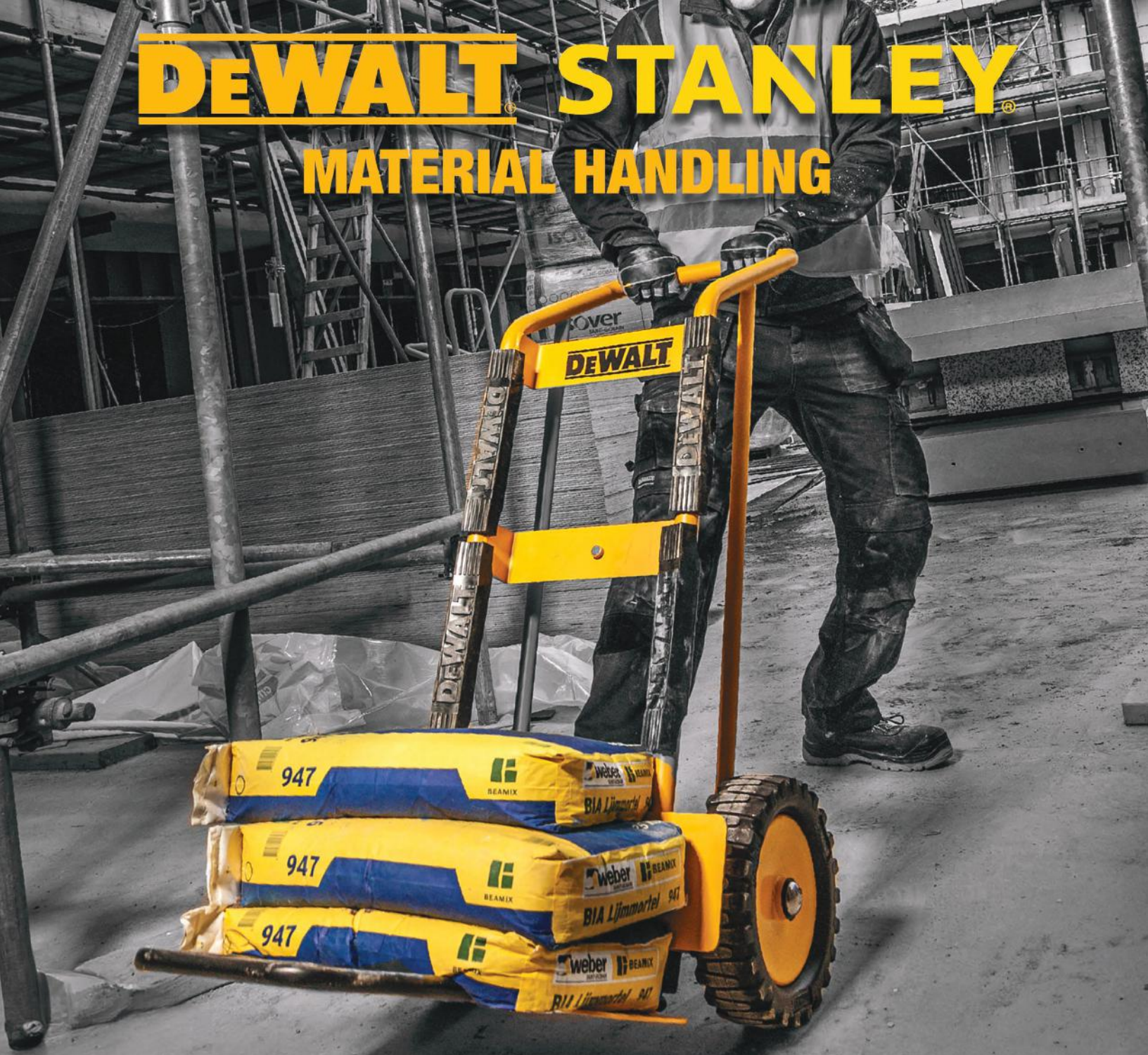




**METAL SHOWCASE  
700 0073 DW**

# DEWALT STANLEY

## MATERIAL HANDLING



## STEEL P-HANDLE TRUCK

**DXWT-507LS 880 LB**

- DEWALT's patented LOADSHIFT technology redistributes weight during motion, reducing the effort required. Heavy loads up to 400 kg feel lighter and remain easy to control
- Durable steel construction ensures stability under heavy use.
- The dual-handle design provides a wide grip and precise control during transport.

**MSRP \$199.99**

AVAILABLE  
**Q2**  
2026



Runs on  
**STEEL CORE  
FLAT FREE  
PU WHEEL**



**DEWALT**

## STEEL P-HANDLE TRUCK

**DXWT-506LS 880 LB**

- P-Handle Design: Popular handle for delivery applications.
- Narrow grip is perfect for moving through tight corners.
- LOADSHIFT design redistributes weight during motion.
- Flat-free DXWT-508PU wheels.
- Load protector strips

**MSRP \$199.99**

AVAILABLE  
**Q2**  
2026



Runs on  
**STEEL CORE  
FLAT FREE  
PU WHEEL**



**DEWALT**

## STEEL P-HANDLE TRUCK

**DXWT-505LS 330 / 880 LB**

- P-Handle Design: Popular handle for delivery applications.
- Narrow grip is perfect for moving through tight corners.
- LOADSHIFT design redistributes weight during motion.
- Flat-free wheels.
- Load protector strips

**MSRP \$249.99**

AVAILABLE  
**Q2**  
2026



Runs on  
**STEEL CORE  
FLAT FREE  
PU WHEEL**

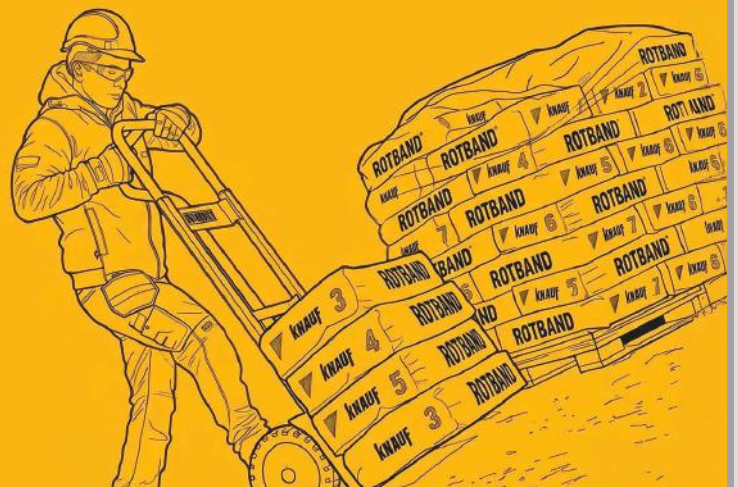


**DEWALT**

## WHAT IS



DEWALT's patented LOADSHIFT technology redistributes weight during motion, reducing the effort required. Heavy loads up to 400 kg feel lighter and remain easy to control.



# STEEL PLATFORM TRUCK

**MSRP \$239.99**

AVAILABLE  
**Q2**  
2026

**DXWT-504 880 LB**

- Heavy duty design: Steel platform and handle
- Foldable handle: Handle folds down for easy transport and storage.
- Oversized flat free PU caster wheels
- Front wheels swivel for easy cornering. Oversized 250mm diameter for moving over uneven terrain.



Runs on  
**STEEL CORE  
FLAT FREE  
PU WHEEL**



## SPECIFICATIONS

Capacity	400kg (880lbs)
Wheels	250mm PU Casters
Platform Size	605x905mm
Outer Dimensions	915x615x84mm
Barcode	EAN 871749637321

**DEWALT**

# 2-WHEEL STEEL DOLLY

- 1,100 lbs. capacity,
- Provides the ability to move oversized panels and sheets single-handedly, for easy transport
- Anti-slip 12-in steel core wheels prevent sliding
- Hinge mechanism that clamps doors and panels using their own weight



Runs on  
**STEEL CORE  
FLAT FREE  
PU WHEEL**

AVAILABLE  
**Q2**  
2026

PART #	CLAMPING	LBS	MSRP
DXWT-200	40 mm - 120 mm	660	\$239.99
DXWT-201	80 mm - 200 mm	1,100	\$249.99

**DEWALT**

# FOLDABLE HAND TRUCK

**DXWT-FT512 400 LB**

- Foldability allows for convenient storage in very small spaces on jobsites and around the home.
- Oversized tubing with matte epoxy based powder coat ensures a strong grip on frame.
- Runs on flat free DeWalt 6.9inch wheels.

**MSRP \$199.99**

AVAILABLE  
**Q2**  
2026



**DEWALT**

## HAND TRUCK WITH FOLDING PLATE

**SXWT-MT520-PU 440 LB**

- Easy and secure handling with this steel hand truck and extra-large loading platform for commercial use
- Made of durable steel with guides on the back allow for easy handling on large obstacles like stairs
- Large PU wheels allow for easy movement in indoor and outdoor situations
- Heavy duty castors allow for precise steering in platform modus

**MSRP \$129.99**

AVAILABLE  
**Q2**  
2026



Runs on  
**STEEL CORE**  
**FLAT FREE**  
**PU WHEEL**

**STANLEY.**



\*WHEELS NOT AS ILLUSTRATED

## HAND TRUCK WITH LARGE PLATE

**SXWT-HT535-PU 440 LB**

- Plastic handles provide better grip and finger protection
- Steel hand truck with extra large loading platform for easy and secure handling
- Built-in guides on the back allow for easier handling on stairways.
- Large PU wheels

**MSRP \$129.99**



Runs on  
**STEEL CORE**  
**FLAT FREE**  
**PU WHEEL**

**STANLEY.**



\*WHEELS NOT AS ILLUSTRATED

## HAND TRUCK WITH HANDLES

**SXWT-HT539-PU 800 LB**

- Commercial hand trucks with durable all steel construction.
- Plastic handles provide better grip and include knuckle protection.
- Available with solid PU wheels
- 800 lb load capacity

**MSRP \$149.99**

AVAILABLE  
**Q2**  
2026



Runs on  
**STEEL CORE**  
**FLAT FREE**  
**PU WHEEL**

**STANLEY.**



\*WHEELS NOT AS ILLUSTRATED

## HEAVY DUTY MULTI TRUCK

**SXWT-MT515-PU**

- Heavy Duty Industrial Multi Truck.
- Large PU Wheels.
- Use as Hand Truck or Platform Truck.

**MSRP \$349.99**

AVAILABLE  
**Q2**  
2026



Runs on  
**STEEL CORE**  
**FLAT FREE**  
**PU WHEEL**

**STANLEY.**



\*WHEELS NOT AS ILLUSTRATED

## STAIR CLIMBER STEEL TRUCK

**SXWT-HT523** 440 LB

- Solid frame made of tough steel for added strength & durability;
- 3-Wheeled design for easy movement over obstacles, thresholds & stairs; Plastic grip handle with knuckle protection offers a good grip.
- Robust weight carrier - They combine user friendly features with rugged build quality for safe, easy & secure moving; Comes with steel guard plate to protect loads from the wheels

**MSRP \$229.99**

AVAILABLE  
**Q2**  
2026



STANLEY.

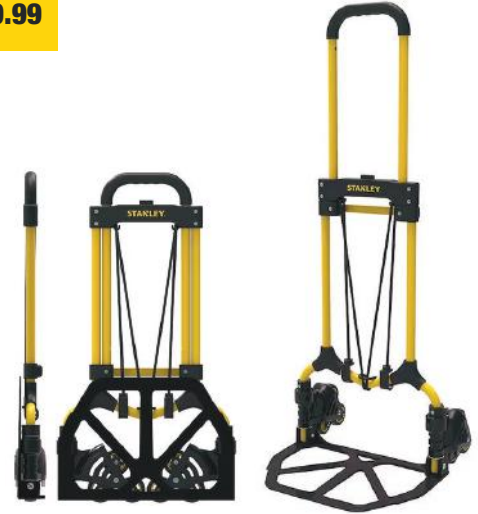
## FOLDING STAIR CLIMBER

**SXWTD-FT584** 70 / 140 LB

- Easy-to-Use Versatile Utility Cart.
- Compact lightweight design.
- Major plastic stress points are made of durable nylon; other plastic pieces are polypropylene.
- Easy maneuvering on stairs, thresholds, curbstones and other obstacles.
- Includes elastic cord.

**MSRP \$59.99**

AVAILABLE  
**Q2**  
2026



STANLEY.

## FOLDABLE HAND TRUCK

**SXWTD-FT580** 150 LB



VIDEO

- Folds and opens in seconds.
- Easy to Use and Store Comes
- Major plastic stress points are made of durable nylon; other pieces are polypropylene
- Comes with a bungee cord to safely strap loads onto the hand truck
- Adjustable TPR grip handle
- Made of strong durable steel

**MSRP \$64.99**

AVAILABLE  
**Q2**  
2026



STANLEY.

## 2-IN-1 FOLDING TRUCK

**SXWTD-FT585** 150 / 300 LB



VIDEO

- Easy-to-Use Versatile Utility Cart.
- Strong and Durable Design. Made of strong and durable steel.
- Takes Seconds to Open and Close.
- Major plastic stress points are made of durable nylon; other plastic pieces are polypropylene.
- Hand truck and platform cart in one.

**MSRP \$139.99**

AVAILABLE  
**Q2**  
2026



STANLEY.

# DEWALT

## FALL PROTECTION - DROP PREVENTION



**DEWALT**

# ROOFTOP SAFETY KIT

AVAILABLE  
**Q3**  
2026

The DEWALT fall protection line-up is designed to provide you with convenient personal fall protection solutions, whether in kits or individual items. Work safely during roof top applications or select a kit that provides you with the basic compliance in a variety of work at height situations. Our products are designed and tested to OSHA and ANSI standards to give you confidence that you can safely perform your work.



**MSRP \$249.99**

## ROOFTOP SAFETY KIT

**DXFP110050**

The DEWALT Rooftop safety kit offers a complete setup for roofing applications. It includes our D1000 harness with 5 pts of adjustment and pass-thru leg buckle connections, a reusable rooftop anchor with nails and screws for easy installation, and a 50 ft. (15.2 m) lifeline with an integrated energy absorber for full compliance and safety on the job. It all comes in a convenient container for easy storage.

### BENEFITS AND FEATURES

**DURABILITY:** Heavy Duty Repellent Webbing, resists oil, water, and stains to help ensure ease of maintenance throughout its service life

**EASY INSTALLATION:** The coated reusable steel roof anchor with fasteners is ready for quick and easy installation.

**VERSATILITY:** Hinged design allows anchor to adapt to various roof pitches and comes with both nails and screws for easy installation.

**QUICK HARNESS CONNECTIONS:** The pass-through buckles provide a quick and easy fit when donning the harness.

**EASY OF MOVEMENT:** Vertical Lifeline Assembly with energy absorber, and attached rope grab provides smooth and easy movement along the lifeline.

### SPECIFICATIONS

**ROPE LENGTH:** 50 ft. (15.2 m)

**MATERIALS:** Repellent Polyester webbing, steel, and Poly steel rope

**WEIGHT RATING:** System rated to: 310 lbs. (140 kg)

**STANDARDS MET:** ANSI Z359.1-2020, Z359.11-2021  
OSHA 1926.502, 1910.140

**WARRANTY** Limited 2 Year Warranty



# 4 VITAL COMPONENTS FOR A PERSONAL FALL ARREST SYSTEM.

THESE ARE THE ABCD'S OF FALL PROTECTION:

**Anchorage - Body Wear - Connecting Device - Descent/Rescue**

**A** Anchorage/Anchorage Connector  
Anchorage: Commonly referred to as a tie-off point (Example: Rooftop Anchor)  
Anchorage Connector: to join the connecting device to the anchorage. (Example: choker-anchor-strap)

**B** Body Wear: The personal protection equipment worn by the worker.  
(Example: full-body harness)

**C** Connecting Device: The critical link which joins the body wear to the anchorage/anchorage connector. (Example: energy absorbing lanyard or self retracting lifeline).

**D** Descent/Rescue: refers to the rescue plan and products for a fallen worker, which is a critical element of any fall protection program. Suspension Trauma Straps and Winch Systems are often used in the Rescue Plan.



## FALL PROTECTION HARNESS

**DXFP512001**

- D1000 5-point fall protection harness with Pass-Thru Chest & Leg buckles
- Polyester webbing with Repellent Coating resist stains from oil & water
- Protected label pack keeps label easily readable during inspection
- Built in impact indicators show when a fall has occurred.

**MSRP \$89.99**

AVAILABLE  
**Q3**  
2026



## REUSABLE ROOFTOP ANCHOR

**DXFP842001**

- Hinged design allows anchor to adapt to varying roof pitches
- Plated steel construction, powder coated high strength and durability
- Designed for multiple use with new fasteners
- Can be installed with either screws or nails

**MSRP \$49.99**

AVAILABLE  
**Q3**  
2026



## SINGLE LEG TOOL LANYARD

**DXDP720200**

- Durable polyester blended webbing
- Elastic Cord Cinch with Adjustable barrel lock for tool attachment
- Anodized aluminum alloy carabiner with captive eye
- Relaxed length 32" (81 cm); extended length 51" (129 cm)
- Max working capacity 15 lbs (6.8Kg)
- Meets ANSI-ISEA 121-2018 Standard

**MSRP \$29.99**

AVAILABLE  
**Q3**  
2026



**ANSI 121-2018**

## 6' ENERGY ABSORBING LANYARD

**DXFP612111**

- Built-in energy absorber reduces weight over external shock pack designs
- Plated steel hardware and Polyester webbing for extended life and durability
- Built in fall indicator lets you know when a fall has occurred, and lanyard should be removed from service

**MSRP \$89.99**

AVAILABLE  
**Q3**  
2026



# DEWALT

## JACKS & AXLE STANDS



## 2-3 TON HYBRID GARAGE JACK

**DXALTTJ830027H**

- Low-profile & SUV-ready design: with a minimum height of 3.87 inches, it fits easily under low-clearance vehicles, with extensive maximum lifting range (up to 30.37 inches)
- Rubber saddler pad protects vehicle underbodies from scratches during lifting
- Dual-pump system, foldable lifting arm for compact storage, steel wheels for stable, smooth movement, and a 200° rotatable handle with four positions

**MSRP \$399.99**



## 3 TON GARAGE LOW PROFILE JACK

**DXALT830026XHB**

- Low-profile design (minimum height 3.5 inches) paired with an SUV adaptor, enabling it to fit under low-clearance vehicles while expanding compatibility to larger SUVs—boasting a big lifting range (max height 24 inches)
- Rubber saddler pad protects vehicle underbodies from scratches during lifting
- D-handle ensures easy maneuvering and control. V-stopper design enhances stability when securing the jack, and nylon wheels

**MSRP \$299.99**



## 6 TON HEAVY DUTY JACK STAND

**DXALTTJ46005A**

- Built to support heavy loads with confidence. It features an added saddle base that expands the contact surface, significantly boosting stability when securing vehicles
- Double locking device (paired with a double chain connection) delivers extra safety, preventing accidental slippage during use
- Durability is elevated by an extra steel feet pad, extended feet pad is designed for super-duty applications—supporting up to 3.5 times the rated capacity

**MSRP \$139.99**



## 22 TON HEAVY DUTY JACK STAND

**DXALTTJZ220006**

- The heavy-duty jack stands are used to support your vehicle after lifting with a jack
- Constructed of high-grade forged steel with a welded frame design for durability
- Adjustable height ranges from 13-3/4" to 19-11/16" with a 12 ton (24,000 lb) load capacity. Large V-shape saddle surface area for better contact with the load being supported.
- Wide foot base provides added strength and stable support.

**MSRP \$349.99**



# 40 INCH HEAVY DUTY FOLDING CREEPER

DXALTTJ6552A



**HEAVY DUTY DURABILITY**  
ROBUST STEEL FRAME



**PROFESSIONAL COMFORT**

PROFESSIONAL-GRADE  
PADDED COMFORT & SUPPORT



**SMOOTH-ROLLING**  
ALL-TERRAIN CASTERS FOR  
EASY UNDER-VEHICLE ACCESS

**MSRP \$169.99**

The **DEWALT 40 Inch Heavy Duty Folding Creeper** delivers professional-grade comfort and durability for automotive work.

Featuring a **robust frame, padded support, and smooth-rolling casters**, it glides effortlessly across shop floors for easy under-vehicle access. Its **space-saving foldable design** enables compact storage, making it ideal for both professional garages and DIY enthusiasts. Built to DEWALT's legendary quality standards, it's the **ultimate work companion for any mechanic**.



**SPACE-SAVING FOLDABLE DESIGN**  
for compact storage

# STANLEY®

## TV MOUNTS & SHELVES



## TV SHELF - 6", 12" & 24" WIDE

- 6", 12" & 24" universal a/v top shelf units.
- Mounts to the top any flat panel tv
- No tools or hardware required
- Perfect for Soundbars, games systems, speakers, cable and set-top boxes, pictures and home decor items



PART #	LENGTH	MSRP
ATS-106	6"	\$15.99
ATS-112	12"	\$26.99
ATS-124	24"	\$39.99

**STANLEY.**

## TILT MOUNT FITS 40"- 100"

### THR-EC3816T

- Designed and built for larger screens, while providing a low profile and easy to release secure solution.
- Configured to 16" and 24" Stud Systems for secure installation.
- Large wall bracket for accommodating wiring and power access behind the TV.
- Features several state of the art safety, security and adjustment features.
- High performance and an affordable price.
- Made of high quality steel for ultimate rigidity and long lasting performance.

**MSRP \$109.99**



**STANLEY.**

## FULL MOTION MOUNT FITS 37"-80"

### THX-DDS6415FM

- Fits 37"-80" TVs
- Supports up to 150 lbs.
- Installs in 2 studs
- Dual arm
- Depth: 2.7 in.

**MSRP \$159.99**



**STANLEY.**

## FULL MOTION SINGLE ARM 37"-80"

### THX-SS1364FM

- Fits 37"-80" TVs
- Simple and easy to install and operate.
- Offers full motion capabilities for a large number and size of TVs.
- Features several state of the art safety and security features.
- Integrated cable management.

**MSRP \$129.99**



**STANLEY.**

## TILT MOUNT KIT WITH HDMI

### TLR-3270TKIT

- Tilting Mount for Medium Size Flat Panel TVs 37" TO 80"
- Capability of handling 110 lbs
- Provides 10 degrees of tilt along with easy and safe access to the rear of the TV.
- 9' / 2.3 m HDMI Cable
- 100 ml bottle of Cleaner
- 12" x 12" Microfiber Cleaning Cloth

**MSRP \$74.99**



**STANLEY**

## TILT MOUNT FITS 32"- 70"

### TLR-EC3211T

- Provides 12 degrees of tilt down
- Made of high quality steel for ultimate rigidity and long lasting performance.
- The Magnet Tab system gives users quick access to the release mechanism without having cables, wires or strings hanging from the back of the TV.
- The Click and Release system permits easy access to the rear of the TV without special tools while securely affixing the TV to the wall.

**MSRP \$54.99**



**STANLEY**

## LARGE FIXED MOUNT FITS 40" - 65"

### TLS-210S

- "Magnetic Tab" system gives users quick access to the release mechanism without having cables, wires or strings hanging from the back of the TV.
- The "Click and Release" system permits easy access to the rear of the TV without special tools while securely affixing the TV to the wall.
- Built in kickstands provide convenient access to the back of the TV for cable hook-up.
- Weight Capable: 110 lbs / 50 kg

**MSRP \$39.99**



**STANLEY**

## PRO LG EXTENSION MOUNT

### TLX-DS3105FM

- Fits 37"-80" TVs
- Holds 130-Pounds
- Articulating
- 600x400 max Vesa pattern
- Retracts to 3-Inch and extends to 14-Inch

**MSRP \$139.99**



**STANLEY**

## FULL MOTION MOUNT FITS 37"-70"

### TLX-ES4501FM

- The Pro Series 37"-70" Extension Mount
- Easily adjusted without complicated tools or screws and features integrated cable covers.
- Full 180deg swivel with a 15deg tilt

**MSRP \$159.99**



**STANLEY**

## TILT MOUNT FITS 23"-55"

### TMS-DS1113T

- Features several state of the art safety and security features.
- High performance and an affordable price.
- Made of high quality steel for ultimate rigidity and safety.
- Tilting Mount for Medium Size Flat Panel TVs
- Capability of handling 80 lbs
- Provides 12 degrees of tilt along with easy and safe access to the rear of the TV.

**MSRP \$34.99**



**STANLEY**

## FULL MOTION MOUNT FITS 13"-37"

### TMX-022FM

- Easy ability to adjust tilt without complicated tools or screws.
- Features several state of the art safety and security features.
- High performance for an affordable price.

**MSRP \$34.99**



**STANLEY**

## FULL MOTION MOUNT FITS 13"-37"

### TMX-102FM

- Easy ability to adjust tilt without complicated tools or screws.
- Features several state of the art safety and security features.
- High performance for an affordable price.

**MSRP \$44.99**



**STANLEY**

## FULL MOTION MOUNT FITS 23"-55"

### TMX-104FM

- Fits 23-Inch-55-Inch TVs
- Holds up to 60-Pounds
- Tilts-10Deg-5Deg, swivels 180deg
- Extends 19-Inch from the wall and retracts to 2-Inch depth
- Full swivel, tilt and level correction

**MSRP \$64.99**



**STANLEY**

## COMPACT TABLETOP STAND

### TTL-6485A

- Fits 32"-70" TVs
- Universal tabletop mount for flat or curved TVs
- 5 levels of height adjustment
- Foam pads on feet to minimize slipping & marring
- Installs in seconds
- Integrated cable management & covers for clean appearance
- Includes 2 table stand arms & all hardware & accessories

**MSRP \$64.99**



**STANLEY**

## LARGE TILT MOUNT FITS 37"-70"

### TLS-120T

- Designed and built for larger screens, but with the ability to tilt easily without the need to loosen screws or use of tools.
- Capability of handling 100 lbs
- Provides 12 degrees of tilt along with easy and safe access to the rear of the TV
- The "Click and Release" system permits easy access to the rear of the TV without special tools while securely affixing the TV to the wall.

**MSRP \$99.99**



**STANLEY**

## FULL MOTION MOUNT FITS 32"-55"

### TLX-350FM

- High performance dual arm interactive mounting system featuring revolutionary gas shock spring to easily and effortlessly control the movement of your flat panel TV.
- Easy install and operation on a single stud, drywall or concrete.
- Utilizes the weight of the TV as a counterbalance, so that it is easy to adjust and move the screen.
- Features several state of the art safety and security features.
- High performance for an affordable price.

**MSRP \$229.99**



**STANLEY**







# **BSiDS**

A  **BULL SALES** COMPANY



**CANADIAN  
DOLLAR  
BILLING**



**SHIPPED  
FROM  
ONTARIO**



**PRE PAID  
FREIGHT ON  
\$800 ORDERS**



**YOU CAN  
MIX & MATCH  
PRODUCTS**

# 866-987-2855

[orders@bsids.ca](mailto:orders@bsids.ca) • [www.bsids.ca](http://www.bsids.ca)

# DEWALT

# STANLEY