



design.build.discover

Portfolio





dbd play

design.build.discover

Hello from dbdplay! We're here to bring joy to your world, one playground at a time. We think playgrounds should be places where imaginations run wild, friendships bloom, and memories are made. That's why we don't just design playgrounds; we create little worlds of wonder. We're your go-to team for making the magic happen, with a personal touch that makes everything feel a bit more special (and a lot simpler!).

What's coming up? A little tour through some of our favourite projects! You'll see how we've sprinkled our magic across nurseries, primary schools, SEND, and multi-academy trusts, all neatly sorted by budget. We've popped in some lovely pictures too, so you can see exactly how our designs come to life.

So go on, have a browse, and let us show you how we turn playground dreams into reality. We're here to help you create a place where kids can laugh, play, and just be kids.

It's as simple as that.

The dbdplay team



04
Early Years
& Nurseries



08
Primary Schools



14
Special Educational
Needs & Disabilities



20
Multi-Academy
Trusts



Avanti Meadows Primary School

Bishops Stortford
£ 20,000 - £ 22,000

Setting the Scene

With the opening of a brand-new nursery, Avanti Meadows wished to create a play space that's as inspiring as it is fun, using the natural features of the area to their advantage.

Wishlist

- Trike track
- Physical play
- Drainage dip feature
- Safety fencing

Our Solution

Georgia and Dan, our playground dream team, worked their magic to create a play space that's as safe as it is fun. We popped in a double tower slide with bonded rubber mulch to keep things looking natural and the little ones safe. That drainage dip? It's now a cool bridge feature! We also added a cosy storytelling corner for those special moments, and a flush trike track made from thermoplastics, perfect for zooming around.

We delivered the whole project in time for the nursery's big opening. The eco-friendly rubber mulch looks right at home with the greenery, and the playground provides lots of lovely open play space.

Andy, the Premises Manager, was over the moon, saying *"the playground looks great and the kids love it."*



Mangotsfield CofE Primary

Bristol

£ 85,000 - £ 90,000

Setting the Scene

Mangotsfield CofE Primary School, nestled in South Gloucestershire, is home to 630 lively kids. With a vision to be “better today than yesterday,” they wanted to revamp their EYFS playground, weaving in the elements of Earth, Wind, Fire, and Water.

Wishlist

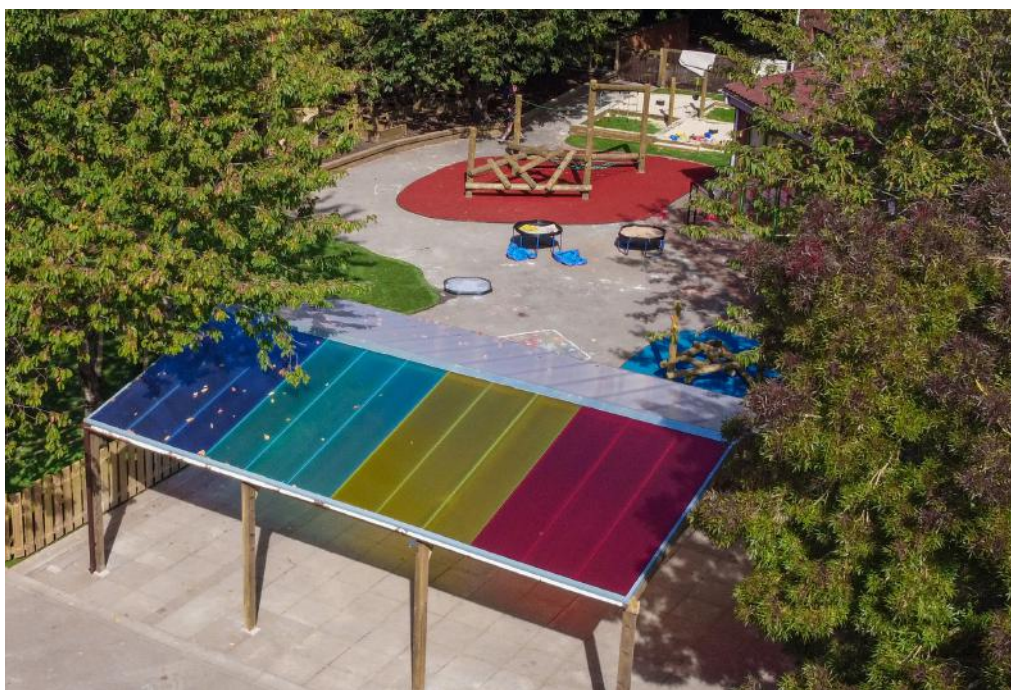
- Sheltered area
- Room for exploration
- Zoned play areas

Our Solution

We turned their overgrown pond into a Reflection Area with steps and a small slope—perfect for socializing, music, reading, and imaginative play. The sleeper steps may also be used as tiered seating for outdoor lesson time; like a miniature amphitheatre! The playground now flows seamlessly into this space, making supervision easier for teachers. An extended raised planter lines the back of the Reflection Area, to provide the foundation of a colourful wildflower garden, isolated from the heavy foot traffic.

To boost physical activity, we installed two Jungle Climbers, offering different levels of challenge to help kids build strength. Our new Water Wall and Sandpit with a Single Bucket & Rail system encourage problem-solving and teamwork.





We added a large Multicoloured Polycarbonate Canopy that reflects vibrant colours onto the playground, creating a sensory treat. The Natural Play Area now includes Mud Kitchens, Planters, a Bug Hotel, and Potting Tables, giving the children a space to explore, learn, and get their hands dirty.

"It's just wonderful. We are beyond thrilled!"

Kirsty and I spent some time watching the children in the environment yesterday and it's indeed a long-term vision and dream secured. You can see the impact already.

Thanks so much."

We love to see a transformation have such an impact on playtime!



Holy Trinity Primary School

Devizes
£ 16,000 - £ 18,000

Setting the Scene

Near the Wiltshire town of Devizes lies Holy Trinity C of E Primary Academy. It's a lovely little school but their trim trail and artificial grass had seen better days. They dreamed of a playground where every child, from the smallest to the tallest, could play and explore in a safe, natural setting. So, they called us.

Wishlist

- All-weather surfacing (no soggy feet!)
- A playground that blends into the natural beauty surrounding it
- Physical play equipment that everyone can enjoy

Our Solution

We timed our installation during term so the kids could watch the action happen. Not only did this make the whole process educational and fun for them, but it also kept everyone super excited about their new playground.

We replaced the tired old Trim Trail and upgraded the surfacing with a fresh, all-weather version; perfect for running, jumping, and everything in between. The new surfacing fits right in with the natural surroundings, making sure the school grounds stay as beautiful as ever.

Playtime just got a whole lot better!



St Patrick's Catholic Primary

Southampton
£ 18,000 - £ 20,000

Setting the Scene

St Patrick's is a warm, welcoming Catholic school in East Southampton, serving the 140 Key Stage 1 children of the school. Their Headteacher contacted us to create a playground bursting with physical and creative play opportunities, fast!

Wishlist

- Performance Space
- Outdoor Classroom
- Storytelling Chair
- Mud Kitchen

Our Solution

We transformed their KS1 playground into a space where creativity and fun can thrive. The kids' love for drama inspired a revamped amphitheatre, now a vibrant outdoor classroom with a timber deck, artificial grass, and musical instruments.

To keep things tidy, we covered muddy areas with Just Like Grass and added a low-level sleeper wall. We also preserved the bushy mud area for hide-and-seek adventures. In the bark pit, we created a storytelling nook and a mud kitchen for imaginative play.

The result? A playground that's now a calm, organized, and fun space that the kids—and staff—absolutely love!



Sambourne Primary School

Warminster

£ 25,000 - £ 28,000

Setting the Scene

Over in Warminster, Sambourne Primary School contacted us with a dilemma. Their current all-weather sports area was on a slope, the patch of grass they did have spent most of the year masquerading as a mud pit. The main playground was small, so ball games were a no-go there too. They needed a solution that would turn their outdoor space into a sporty paradise, come rain or shine.

Wishlist

- An all-weather sports surface
- Active sport grass for year-round play
- A designated sports area that's safe and fun

Our Solution

We whipped up a multi-sport surface that's as versatile as it is durable, with goal ends for all kinds of games: football, basketball, cricket, hockey—you name it.

We laid an all-weather surface in those high-traffic zones, so the fun doesn't have to stop when the rain starts. And the soil gained from the excavation we turned into a grassy mound, perfect for rolling and a bit of extra fun when the sun's out.

Now, their playground's got game all year round!



Ashton Gate Primary School

Bristol

£ 48,000 - £ 52,000

Setting the Scene

Ashton Gate Primary School, a lively and welcoming school in Bristol, faces the challenge of limited outdoor space in an urban setting. At its heart is a charming Victorian building, surrounded mostly by tarmac.

Wishlist

- Challenging equipment
- Physical development
- An impressive focal point

Our Solution

To keep things budget-friendly and add a bit of extra wow-factor to the playground, we decided to give some of the older, more challenging equipment a fresh start. With a bit of resurfacing magic they're back in action and better than ever.

We brought in a big Jungle Climber and a High-Level Trail Climber, offering the kids a jungle-gym of adventures. From monkeying around to testing their balance and building up those muscles, there are endless ways for them to get moving, have fun, and develop those all-important gross motor skills.



Parkdale Primary School

Nottingham

£ 57,000 - £ 60,000

Setting the Scene

Parkdale, a large school in Nottingham, had a large tarmac playground which could use a sprinkle of excitement and a dash of inspiration to get the kids up and moving.

Wishlist

- Performance space for budding stars
- Surfacing for table tennis showdowns
- A planting area to grow green thumbs
- An outdoor classroom
- A den-making area

Our Solution

We got to work on turning that bland space into a hive of activity. We kicked-off with a vibrant amphitheatre, complete with a canopy in cheerful colours, making it perfect for year-round performances and storytelling.

We then carved the playground into distinct zones, a performance corner for the little actors, a sports zone for table tennis champions, a planting area for budding gardeners, and an outdoor classroom for learning outside. Oh, and let's not forget the den-making area, where imaginations can run wild.





The Chalet School

Swindon

£ 36,000 - £ 40,000

Setting the Scene

Chalet School is a primary dedicated to pupils with SEND and Autism. They're big on getting their students to connect with the great outdoors, where nature and learning come together in perfect harmony. With a focus on sensory experiences, they needed a space where swinging, spinning, and sliding could be more than just fun—they had to be a sensory feast!

Wishlist

- Swings to fly high
- Spinning spots for dizzying delights
- A slide for thrilling whooshes

Our Solution

To keep things safe and structured, we used surfacing to create clear safety zones around each piece of equipment. Think of it as the playground version of painting inside the lines: yellow outlines for the swings and the tower & slide, and a cool blue zone around the cone climber, making it easy for teachers to guide their students.

And because every detail matters, we made sure the cone climber ropes were done up in the school's very own colours.

Now, Chalet School's playground isn't just a place to play—it's a sensory journey that's as thoughtful as it is thrilling.



Uplands School

Swindon

£ 38,000 - £ 42,000

Setting the Scene

Uplands School in Swindon, dedicated to pupils with severe and profound learning difficulties, had a memorial garden to honour past students. Unfortunately, the garden had become inaccessible, with uneven surfacing that made it difficult for many to visit—a place of remembrance that had been closed off for too long.

Wishlist

- Wheelchair-accessible pathways
- A natural, calming environment
- Restful, shaded seating area

Our Solution

Understanding the garden's importance, we created a bonded rubber mulch pathway that gently winds through the space, making it accessible to all. This pathway leads to a wheelchair-accessible planting area, a sheltered spot for reflection, and multiple seating options, including wheelchair-friendly picnic benches.

This project wasn't just about fixing a garden; it was about restoring a space of peace and memory. Now, the garden is open again, providing a tranquil, inclusive sanctuary that honours the past and offers a comforting space for today's students—a lasting legacy for the remarkable individuals who once walked these grounds.



Calthorpe Academy

Birmingham

£ 95,000 - £ 105,000*

*+£ 120,000 to remove 700m² of mound and trees

Setting the Scene

Calthorpe Academy is a big-hearted special needs school in the heart of Birmingham, serving students aged 2 to 19. They're passionate about creating a safe, engaging, and happy environment where every student can thrive. We were contacted to extend and develop their outdated senior playground.

Wishlist

- Transformed senior playground
- Relaxing lunch area
- Ball-game space
- Strength building equipment

Our Solution

We completed extensive groundworks to remove a huge mound (created with the rubble from the initial school build) and pushed the fence back to open up more play space. Acoustic fencing was added to soften the noise from the busy road nearby.

To make the space more inviting, we broke up the grey tarmac with different zones, using Just Like Grass, Play Grass, and Bonded Rubber Mulch surfacing. We also added a bright and colourful Multi-Use Games Area (MUGA) with recessed goal ends, an anti-slip running track with lanes for all, and a high-level Trim Trail with challenging equipment.

For a sensory experience, we built a large polycarbonate canopy in the school's





colours to provide shade and visual stimulation.

The result? A vibrant, inclusive playground that's perfect for older students.

We loved hearing such kind words from the staff:

"Learners stayed out here all playtime - which they do not usually do. They have been playing competitions with me"

"They enjoy exploring it so much they don't want playtime to finish"

"It's so much better! The children are happy and have a nice area to sit with their friends and equipment to play on"

It's so great to hear how much fun we've helped create!



St Rose's School

Stroud

£ 89,000 - £95,000

Setting the Scene

Nestled in beautiful town of Stroud, St. Roses School is all about care and creativity, offering education and therapy for children with a wide range of disabilities.

Wishlist

- Sensory playground
- Fully wheelchair accessible
- Re-use existing play equipment
- Outdoor Classroom

Our Solution

We turned their dream into reality. With three beautiful trees as our centre point, we designed a play area that's both fun and accessible. We added a 6-meter boardwalk wide enough for wheelchairs to pass, sensory panels, musical instruments, and more. Different surfaces, like Gravel Resin Bond, Wet Pour, Bonded Rubber Mulch, and natural grass were used to create a tactile experience underfoot.

The school's existing Wheelchair Roundabout, Swing, and Trampoline got a new life in our design, freeing up the budget for exciting new features like an Outdoor Classroom and Sensory Tunnel. The project took six weeks and involved a lot of groundwork, but the result is a fully inclusive, nature-inspired playground.





Headteacher Sheila Talwar was over the moon:

"The garden is now a vibrant space where everyone can play, learn, and connect."

It was such a joy to see all of the different ages and abilities of children playing together!



Working with MATs

We're a Trusted Partner

Multi Academy Trusts from all over the country have chosen to work with us on their playground project. Here's how we can help your trust:

- Designed for Today's Students; our playgrounds encourage students to step away from screens, get active, and reconnect with each other through imaginative, social play.
- Calming, Inclusive Spaces; we design areas that cater to all students, including sensory zones and quiet spaces that support well-being.
- Simple, Stress-Free Process; we take care of everything from design to installation, ensuring a smooth experience.

Some MATs we have worked with include:

- Avanti Schools Trust
 - Acorn Education Trust
 - Bath & Wells MAT
 - Brunel Academies Trust
 - Cathedral Schools Trust
 - Educate Together
 - Excalibur Academies Trust
 - Oasis Academy
 - Pickwick Academy Trust
 - The Leaf Federation
 - Thrive Academy
- ...and many more!







dbd play
design.build.discover



[dbdplay.com](https://www.dbdplay.com)

01249 470100

hello@dbdplay.com