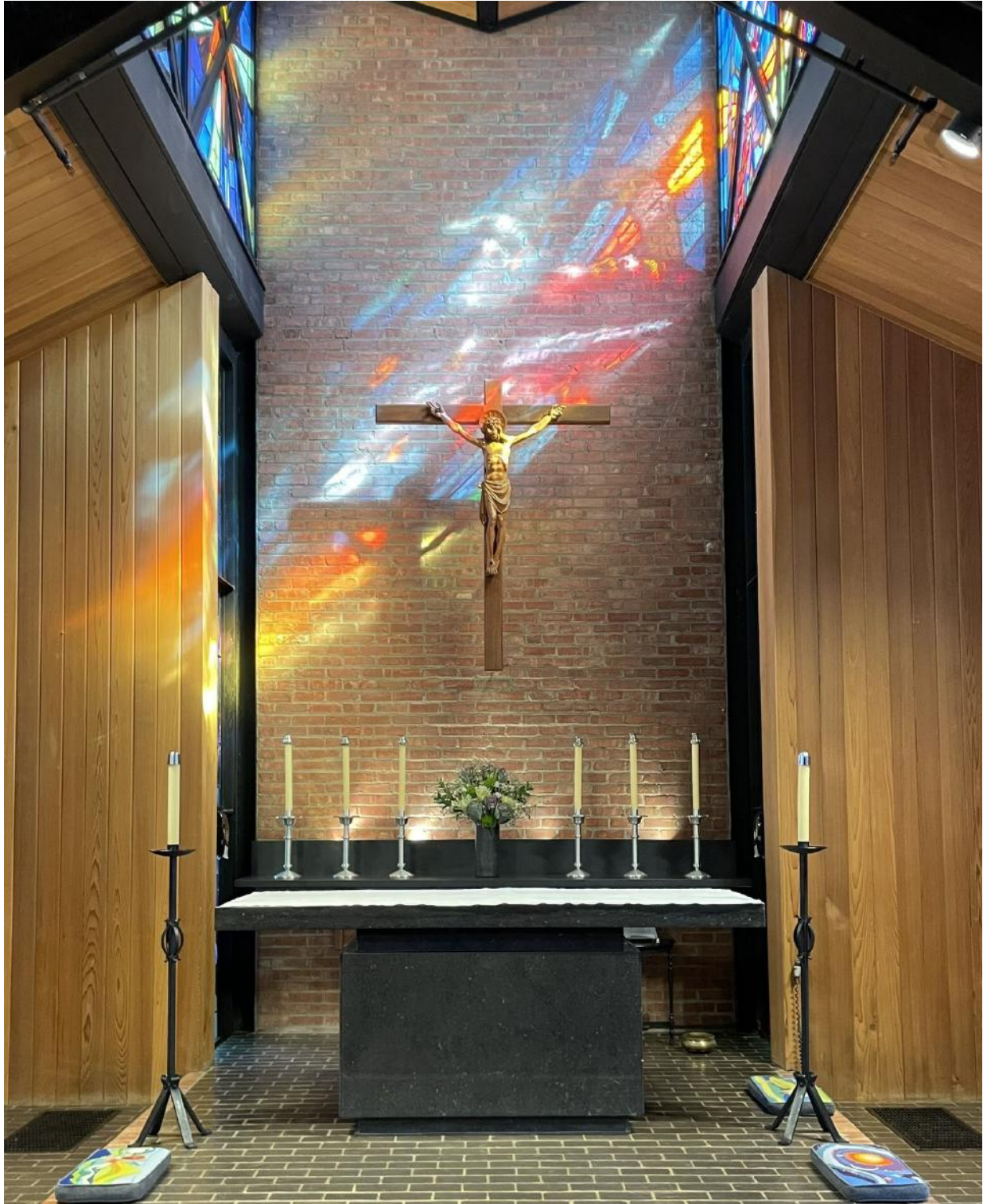




ST. MICHAEL'S
EPISCOPAL CHURCH



2026 PARISH PROFILE



FACES & PLACES



On the cover...

The Corpus was donated in 1949 by the Reverend Joseph Williams, the first Rector of St. Michael's. Herr Bischoff, a German schoolmaster and artisan, gifted it to him while Fr. Williams served as a chaplain in WWII.



WELCOME

Hello,

Thank you for your interest in learning more about St. Michael's Episcopal Church in Barrington, Illinois. Our hope is that the following pages give a thorough view of who we are, what we aspire to become, and our hope for the future.

As you read through these pages, know that we have been praying for you as we discern our mutual interest.

Prayerfully,

The people of St. Michael's

*Voices from the pews...
are direct quotes from parishioners
collected as part of our parish survey
and small group listening sessions.*





TABLE OF CONTENTS

Our Faith Community	5
Vestry, Clergy & Staff	6
Worship & Music	7
Parish Ministries	8
Outreach	9
Gift Shop	10
Preschool	11
Christian Formation	
Children	12
Youth	13
Adult	13
Stewardship & Finance	14
Building & Grounds	15
The Rector We Seek	16
Barrington Area Profile	17
The Diocese of Chicago	18
The Application Process	18





OUR FAITH COMMUNITY

These values came up repeatedly in our parish survey and small group listening sessions, as representations of who we are, our hope for the future of our church, and how we want to relate to the world.

Compassion: We experience support and pastoral care to and from one another. We are dedicated to reaching out and giving our time, talent, and treasure.

Growth: We want to be lifelong learners, with spiritual formation for all ages. Our goal is for every member to find a sense of belonging here and know they are valued. We seek to increase the number of people attending church and becoming members of our parish family.

Relevance: We appreciate sermons that are germane to our lives, that help us find strength and a way to approach the challenges of daily life. It is important to us to be people who respond to the community and the world with care and resilience.

Joy: We find that having fun together enriches our lives and strengthens our bond. Sharing that joy uplifts others and calls them into relationship with us.

Voices from the pews...

[My hope for St. Michael's is] to continue to reach others, spreading God's word, love & light. We need to spread the word of God and remind people that kindness matters. It's not about us, it's about working together in unity to make the world a better place where we can respectfully appreciate one another's gifts and share their resources to help all people prosper and thrive emotionally, spiritually, physically and more. Continue to make it feel like home to all who enter. We are so blessed.

The summary of our parish survey* tells us that, as members look to the future, their top four goals are to:

- ◆ Make necessary changes to attract families with children and youth to our church.
- ◆ Develop and implement a comprehensive strategy to reach new people and incorporate them into the life of the church.
- ◆ Develop the spiritual generosity of the people to financially support the ministry of the church.
- ◆ Provide more opportunities for Christian education and spiritual formation at every age and stage of life.

In comparison to other churches, three goals that are unusually strong here are:

- ◆ Develop the spiritual generosity of the people to financially support the ministry of the church.
- ◆ Strengthen the pastoral response of the church in serving people serving people in times of need (emotional, mental, physical, spiritual, etc).
- ◆ Strengthen the management and support of persons in various ministries so that they are able to do what they do best in work that is meaningful and celebrated.

Voices from the pews...

A vibrant, welcoming space for people to grow no matter where they are in their journey.





VESTRY, CLERGY & STAFF

A combination of paid staff and volunteers help keep things running at St. Michael's. We are grateful for all their hard work!

Vestry

Lis Gabis-Senior Warden, Bob Hoyler-Junior Warden, Sam Adams-Lanham, Wes Kimes, Lynn Mayberry, Craig W. Anderson, Pat Okenek, BJ Seagrist, Cathy Koehlinger, Craig Anderson-Clerk
Not Pictured—Jeff Tolle, John Davis-Treasurer



Full Time

Priest-in-Charge—The Rev Ralph Osborne
Accountant—Carol Hebert
Preschool Director—Janelle Aynessazian
Facilities Manager—Carter Brett
Not Pictured—Parish & Communications Administrator—Open position



Part Time

Deacon—The Rev. Tim Murray
Music Director—Sara Torbeck
Sunday School Director—Kim Curtis
Assistant Preschool Director —Sue Dreys
Not Pictured—Assistant Rector—The Rev. Jim Swarthout , Organist, Jerry Egger





WORSHIP & MUSIC

Each Sunday, two worship services provide distinct styles of celebrating the Eucharist. Both are joyous, uplifting, and nourishing to the soul.

The 8 a.m. service uses Rite I from the Book of Common Prayer. It includes instrumental music and congregation sung hymns, led by the music director and accompanied by the organ or piano.

The 10 a.m. service primarily uses Rite II liturgy from the Book of Common Prayer, occasionally varied with liturgies from other approved sources throughout the Anglican Communion.

Additionally, the Adult Choir deepens our worship with their inspirational offerings. Music is also enriched from time to time by the Children's Choir, string quartets, brass ensembles, or a bluegrass band.

The 10 a.m. service has a higher attendance, drawing from a wide demographic. There are many opportunities for involvement in the service for all ages. Serving with the Choir, Altar Guild, Readers, Lay Eucharistic Ministers, Communion Bread Bakers, Ushers, or Greeters allows people to contribute and engage in worship. Children are encouraged to join the Acolyte team, Children's Choir, and the multigenerational Handbell Choir.



Voices from the pews...

When my child was baptized at St. Michael's, the Rector invited all children in the church to surround him and my family. All those little faces watched intently and seemed so proud to be part of such a special occasion. My family felt supported that day and we loved that the children in our church were asked to contribute.



Both Sunday worship services and other special services are livestreamed and available for viewing at a later date.

Additionally, video conferencing is available for Bible studies, and other educational and committee meetings.

Voices from the pews...

The service really fuels my soul for the week.



PARISH MINISTRIES

Our vibrancy is achieved through ministries that range in scope from support for Worship, Christian Formation & Pastoral Care to Outreach and Fellowship.

The **Adult Choir**, the **Children's Choir**, the multigenerational **Handbell Choir** and accompanying instrumental musicians are well established and deeply appreciated aspects of our Sunday morning worship. Additionally, special choir-centered services are enjoyed by parishioners and the wider community. **Altar Guild**, **Acolytes**, **Lectors**, **Lay Eucharistic Ministers**, **Ushers** and **Communion Bread Bakers** give many members an opportunity to contribute in a meaningful way.

Faith Formation is available to adults through two **Women's Bible Study** groups, the **Friday Morning Men's** group, the **Book Group**, and seasonal multi-week study groups. Our middle school & high school groups meet on Sunday mornings (**LiFT**) and attend the 10 a.m. service together. Primary school aged children use the Illustrated Ministry's Mini Revolutions curriculum to introduce Biblical themes in age-appropriate lessons. Further details on [Christian Formation begin on page 12](#) and [our website](#).

We care for one another with the **Prayer Shawl Knitting Ministry**, **Healing Prayer Ministry**, **Funeral Hospitality** and transportation support. Our recent parish survey highlighted **Pastoral Care** as a high priority for growth.

Voices from the pews...

The connections and perspectives from lay people help me make sense of the world.

Outreach is especially important to our parish with many opportunities to live out our call to care for others. Further details on Outreach [are on page 9](#) and [our website](#).

We enjoy each other's company through activities that enrich both our church life and the lives of our neighbors. Parishioners volunteer together as **Kitchen Angels**, **Garden Angels**, **Historians**, and at **And All the Angels Gift Shop**. We gather to eat and relax at **Coffee Hour**, **The Sunday Brew** and in our **Foyers Dinner Groups**, **Mahjong Club**, **Kids Club**, and periodic **Newcomer Brunches**. Our annual youth fundraiser of the St. Michael's **Pumpkin Patch** is a mainstay in the Barrington area in the fall. Serving as the starting point for the Barrington Area Council on Aging's annual Mid-Century Modern Architecture Tour allows us to showcase our award-winning building.

Little Angels Preschool is nestled within St. Michael's Episcopal Church, offering a warm and inviting play-based learning environment for children aged 18 months to five years. Further details [on page 11](#) and [our website](#).

Voices from the pews...

...a positive emotional tone resonates throughout the St. Michael's community.



OUTREACH

St. Michael's Outreach Ministries mobilize the human, spiritual, and financial resources of the people of St. Michael's Church in order to proclaim together by word and example the Good News of God in Christ.

Our history of joyful giving can be traced back decades. Each year, St. Michael's dedicates a percentage of its members' pledge income to make grants to local, regional, and international organizations. We also seek opportunities for volunteers to work alongside our partner organizations.

In our recent survey and small group listening sessions, a significant number of members commented on how much they value the fact that they belong to a church that maintains its connections to, and works to improve, the world outside our doors.



*Voices from the pews...
...this church shines at its best when it is leaning into generously caring for others. This church is passionate about outreach!*

In 2025, we supported a wide variety of outreach efforts. Examples range from the local Council on Aging's [Meals with Wheels](#) program to [Episcopal Relief & Development's work in the Mideast](#); feeding the unhoused in downtown Chicago with [Cumali](#) to microloans for female entrepreneurs in [South Sudan's Renk Diocese](#). One group traveled to Guatemala to build houses with [Porch de Salomon](#); another group worked under the auspices of [Rebuilding Together Metro Chicago](#) to rehab an elder's house into a safe and comfortable home. [Katy's Christmas Baskets](#) allows parishioners to adopt families from a local parish, Church of the Redeemer in Elgin, IL. More than 30 families received gifts for all family members as well as grocery store gift cards to create a holiday meal.

A full list of organizations and efforts we support can be found on the [Outreach page](#) of [our website](#).



GIFT SHOP

St. Michael's gift shop, *And All the Angels*, was founded in 1994, with a vision of providing dual benefits. The shop offers a uniquely curated collection of items with a focus on faith and connections, and they use their profits to support the work of women's and children's charities locally and globally.



The shop is housed on the lower level of the church, open during the day on Wednesdays and weekend mornings. The shop carries a diverse array of items, including greeting cards, books, christening gifts, jewelry, and an extensive collection of crosses. The annual Christmas bazaar is extremely popular with parishioners and the wider community. As brick & mortar stores have become scarcer, the gift shop has become even more of a public resource for those seeking gifts that honor Christian celebrations.

Over the decades, the shop has received accolades from dozens of nonprofits, expressing their gratitude for its support. In 2025, *And All the Angels* made \$10,000 in donations to five organizations.

Voices from the pews...

I'm grateful for what we share at St. Michael's because it really is a special parish.

We are so blessed!





PRESCHOOL



Little Angels Christian Preschool believes early childhood is sacred; we offer a joyful, faith-based preschool experience where children are nurtured through play, relationships, and meaningful discovery.



Little Angels Christian Preschool was founded in 1998, housed on the eastern lower level of the church, with its own dedicated rooms and entryway. One hundred students are served by fifteen employees. Five program levels accommodate students from 18 months to five years old. Younger students attend two to three days a week, with three-, four-, or five-day options for older students.

Little Angels follows the Creative Curriculum, a research-based approach that supports the whole child through intentional play, teacher-guided learning, and real-world exploration, in accordance with state and national standards and best practices. Age-appropriate lessons on faith and God's love are emphasized through the program; the Rector visits with the children weekly.



We began 2026 with a dynamic, warm new Executive Director, enthusiastically supported by all stakeholders, including the Parent Advisory Board, Vestry Liaisons, Assistant Director and other long-time employees. There is a wealth of additional information available about the Little Angels community and curriculum on [our website](#).



CHRISTIAN FORMATION

St. Michael's employs a part-time Sunday school director who leads a team of volunteers in providing Christian education and formation for preschool through primary grades. Our lesson plans align with the ecclesiastical calendar and guide children toward developing a personal relationship with Jesus.

Recently, we've made two popular changes in how each child's faith journey is encouraged and integrated into the life of the church.

Children now begin church upstairs with their families. After the service begins, the children come to the front of the church for a brief conversation on God's love and care for them, inspired by an item that is unknown to the presiding priest beforehand. These often amusing impromptu discussions help to highlight the relevance of faith to their everyday lives and encourage a sense of community across generations.



*Voices from the pews...
Looking at a group of youth sitting at the front in the 10 am service, enjoying each other and enjoying being part of the service. Now that is what the future of the church is all about!*

Our second recent change is the Formation team's selection of the Illustrated Ministry's Mini Revolutions curriculum. It was chosen because, as their literature states, it "fosters wonder over fear, encourages questions as faithful responses, and honors the intelligence and dignity of every child." Each week, we ask open-ended questions and include creative activities to appeal to different learning modalities. Every element reflects the belief that we all belong in God's love.

In addition to weekly Sunday school, we offer a week-long Vacation Bible School in the summer and numerous opportunities for children and families to grow in faith and participate in the life of the church.





CHRISTIAN FORMATION



St. Michael's 6th – 12th graders are served by our LiFT (Living in Faith Together) ministry, overseen by volunteer parishioners. Several dedicated volunteers facilitate the Sunday morning program and an Advisory Board assists with special projects and events.

LiFT uses the house next door, owned by the church, to create a space that is uniquely theirs. During the program year, students gather at the Sturtz House at 9 a.m. Discussions include the Scripture readings of the day and how it can apply to their lives. This program also strives to create a safe space where our high school students can be themselves. They are invited to Holy Eucharist for the 10 a.m. service and generally sit together near the front of the church.

We offer Confirmation class for students in their sophomore year or older. The team coordinates with other church ministries to provide opportunities for youth to serve; they took on the task of delivering a truckload of Christmas gifts to our Outreach recipients from Church of the Redeemer in Elgin, IL.



LiFT Members & leaders delivering Christmas baskets to a local parish.

The Sunday Brew



We've recently implemented the Sunday Brew following the 10 AM service, a series of coffee talks around adult education. These wellness-centered programs deepen community and Christian formation. To date, topics have included caring for the caregiver, estate planning, local community resources, and mental/behavioral health.

Faith and fellowship groups targeted to specific audiences meet during the week: an early-morning men's group on Fridays, daytime and evening women's Bible study on Tuesdays, and a prayer shawl ministry that meets twice a month.

Adult confirmation class is offered in the spring as needed. Adult education series related to the church season are offered during Advent, Lent, and occasionally during "ordinary" time in the summer and fall.



STEWARDSHIP & FINANCE

St. Michael's is fortunate to have a steady financial outlook. The over budget income was the result of a large number of non-pledge gifts. The 2026 Stewardship drive resulted in 117 pledge cards returned with pledge income of \$597,000.

Revenue & Expense Report

	2025		
	2025 Budget	Actual	2026 Budget
INCOME	\$600,076	\$670,812	\$692,010
EXPENSES			
Mission & Outreach	\$124,216	\$134,530	\$161,831
Administration & Personnel	\$428,559	\$398,322	\$489,120
Facilities & Properties	\$128,936	\$137,960	\$153,764
TOTAL EXPENSES	\$681,711	\$670,812	\$804,715
Variance	(\$81,635)	\$0	(\$112,705)

Balance Sheet as of December 31, 2025

Assets		Liabilities	
Cash & investments	\$ 2,162,309	AP, Pre-paid pledge, etc.	\$124,419
Buildings	\$ 5,709,226	Designated funds	\$1,563,887
Other Fixed assets	\$ 321,516	Total Liabilities	\$1,688,306
Total Assets	\$ 8,193,051		
		Equity	
		Total Equity	\$6,504,745
		Total Liabilities & Equity	\$8,193,051

We have started an awareness program promoting that Planned Giving consists of both Pledging and long-term donations, in the form of a Legacy Fund. The concept of the Legacy Fund is similar to an endowment, where the ultimate goal is to establish a consistent dividend generation that will be sufficient to preserve the Church, in perpetuity. Response to date has been very positive.



BUILDINGS & GROUNDS

Located at the corner of Hillside and Dundee Avenues, St. Michael's Church, built in 1954, presents a striking example of mid-century modern architecture. Designed by parishioner Edward Dart, St. Michael's received the American Institute of Architects Honor Award for excellence in 1963.

Several additions throughout the years have enhanced the original structure with space for a Bosch 1,772-pipe organ, classroom space, and a large community room for all types of gatherings. The building in its entirety is 40,508 square feet.

In addition to the church building, St. Michael's owns a rectory across Hillside Avenue, and another home, directly north of the church. The rectory (3,575 sq. feet) was also designed by Edward Dart, with a recently renovated kitchen and bathrooms. The Sturtz House (3,520 sq. feet) is used for youth group programming on Sundays and various other ministries throughout the week.

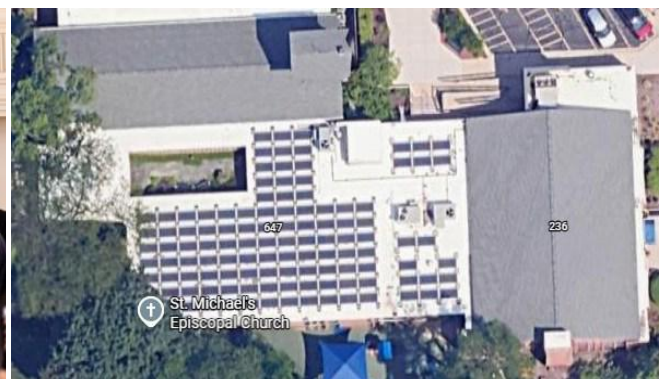
The building is utilized by parishioners and the broader community for many ministries, private music lessons, AA groups, a fencing club, as well as a number of local nonprofit organizations.



A center courtyard serves as a beautiful columbarium garden and is a focal point from the Narthex. More columbarium space can be found in the chapel on the north side of the building.



115 solar panels were installed in 2019.





THE RECTOR WE SEEK

We have prayed to mutually discern the rector that is called to join our church, “that we may receive a faithful pastor who will care for God’s people and equip us for our ministries.” With “perception, faithfulness, and joy,” we have identified the following characteristics as vital to our next leader.

Pastoral disposition: We seek a rector who is authentic and empathetic. We want someone who will treat nourishing, teaching, and caring for us as their vocation. At the same time, we explicitly do not expect or want our rector to take sole responsibility for the development of our church; we have identified a growth opportunity, to be inspired, instructed, and supported in lay ministry to achieve our communal goals.

Dynamic: This encompasses several important qualities. We seek a person with high energy levels, agile communication skills, and persistence. Dynamism also suggests an inclination to adapt and listen to people with a range of lived experiences. We know that there is sometimes a level of discomfort that change brings: what one person perceives as making progress, another may view as abandoning fundamental values. We want a leader with a balanced attitude towards change.

Approachable: We want every member of our parish family to know they matter and that the pastoral team is present for them. Our next rector will lead by example in being humble, grounded, curious, and compassionate. We treasure the fruits of the Holy Spirit made visible. Many of the answers we heard from our parish focused on joy and fellowship as very important to their faith life; we look forward to someone with whom we can laugh and cry.



Community-engaged: As is true for every church, we value preaching skills, the ability to share teachings that reveal truths about Scripture, our world, and ourselves. We want to grow, as individuals and as a church. In order to be relevant in these areas, we believe our rector must be engaged with us, with the community where we make our home, and with the wider world.



BARRINGTON AREA

St Michael's Episcopal Church is 35 miles northwest of downtown Chicago. The church sits in a residential area in the village of Barrington, population around 10,500. The village is the center of a collection of seven villages roughly defined by their shared zip code, with a total population of around 45,000 people.

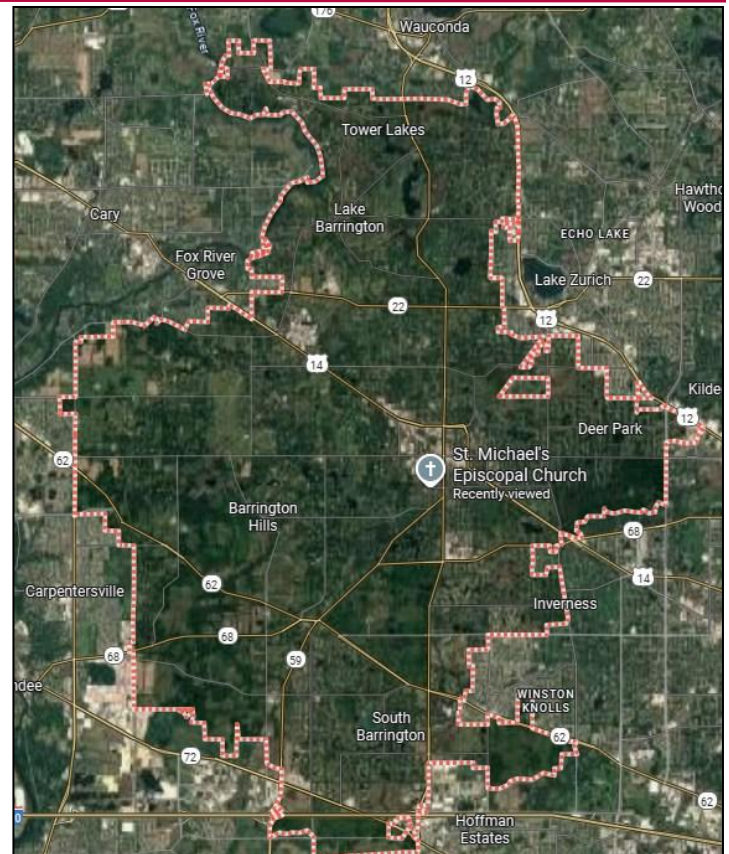
The area is served by nationally recognized [Community Unit School District Barrington 220](#), with seven elementary schools (K-5) two middle schools (6-8), and one high school, as well as an Early Learning Center and transition center for 18—22-year-old special education students. This district is known for its innovative curriculum, high student attainment, rich history, and a highly supportive community.

The [Barrington Area Library](#) is ranked by Library Journal as a 4-star library, meaning it is in the top 4—5% nationally, with more than a million checkouts and hundreds of programs annually; a wide array of services are offered for newborns through elders.

[Advocate Good Shepherd Hospital](#) is ranked a Best Regional Hospital by US News & World Reports. Of special interest is the [Center for Health & Integrative Medicine](#).

Metra provides commuter rail service on the [Union Pacific Northwest Line](#) connecting Barrington station southeast to Ogilvie Transportation Center in Chicago and northwest to Harvard.

The area is unique in its concentration of active nonprofits, focusing on topics as diverse as environmental conservation, civic good, mental health, children's issues, student achievement, healthy aging, social justice, and animal welfare.



St. Michael's is very deeply rooted in the Barrington area, and the demographics, socioeconomic status, and history of the area is certainly relevant to the composition of our parish. Looking at census results will reveal that the area is older, wealthier, more educated, and less diverse compared to county, state, and national averages.

However, it is important to note that we draw from a wide geographic area. We have long-time parishioners who have remained as members despite moving to different communities with Episcopal churches much closer to them. We have new members joining us who live up to 20 miles away.

Our outreach efforts touch communities down the street, into the city, and across the world.



DIOCESE OF CHICAGO

The Episcopal Diocese of Chicago offers a dynamic and diverse landscape for ministry, stretching across northern Illinois—from the shores of Lake Michigan to the banks of the Mississippi River, from the Wisconsin border to Peoria and beyond. With 113 congregations in urban, suburban, and rural communities, the diocese offers a rich variety of contexts in which to live out one’s calling.

Clergy in new calls are supported through the Fresh Start program, designed to ease transitions, and foster strong foundations and collegial relationships. Opportunities for connection and renewal, including the annual Clergy Retreat and the Chrism Mass, bring clergy together for worship, fellowship, and shared purpose. The diocese invests in leadership development through the College for Congregational Development, lay leadership programs, and the Certified Church Treasurer initiative—ensuring that clergy and laity are equipped to lead thriving, resilient congregations.

Under the leadership of the Right Reverend Paula E. Clark, the diocese is embracing a strategic planning process that uses data to guide mission focus and resource allocation. Episcopal Charities and diocesan commissions, committees, and taskforces are actively engaged in outreach, education, and advocacy. The diocese is consciously moving toward becoming a more adaptive environment for ministry.

Members & leaders of St. Michaels serve on advisory committees at the diocesan level and also on the Bishop’s Standing Committee. A St. Michael’s parishioner represented the Episcopal Church, at the appointment of Presiding Bishop Michael Curry, to the United Nations Commission on the Status of Women.



THE APPLICATION PROCESS

Thank you for taking the time to get to know us!

To apply for this position, please complete The Clergy Information Form for Transitions from the Diocesan website: episcopalchicago.wufoo.com/forms/m1poxgz40cwsj2w/

Questions about this position should be directed to The Reverend Canon Andrea Mysen, Canon to the Ordinary: amysen@episcopalchicago.org

**From page 5: We used the services of [Holy Cow Consulting](#) to administer the [Congregational Assessment Tool \(CAT\) Survey](#) to our parish in September 2025. After the Search team and Vestry were updated on the results, Search held a series of eleven small-group listening sessions to gain a deeper understanding of our congregation’s values and goals. The survey and listening sessions informed this document.*



FACES & PLACES



On the back cover....St. Michael's was built with a unique and now world-famous open bell tower, which later was graced by bells hand cast in the Netherlands and given, in 1955, as a Bard family memorial.



ST. MICHAEL'S
EPISCOPAL CHURCH



2026 PARISH PROFILE