

The background is a dense, textured painting of a forest path. The colors are primarily shades of blue, teal, and green, with some purple and yellow accents. The brushstrokes are visible and create a sense of depth and movement. The path appears to lead through a thicket of trees and foliage.

Water Studies

Paintings by
Michael-Francis
Cartwright



While I was working on my large painting for Capital M Beijing I would need to work on another painting to help keep me 'fresh'. I used to work 3 or 4 sessions a day of about 3 to 4 hours each, I did this for over a year on the same painting. So when I did stop to create something else, I could see nothing else but water. This Water Study responded to my need for some peace. It is fairly large and with its apparent depth, one gets the feeling you can step right in to it.

Water Study

2008
oil on linen
300 x 170 cm



Ocean Study

2022
oil on canvas
202 x 237 cm



Étretat sea study

2022
oil on canvas
202 x 237 cm



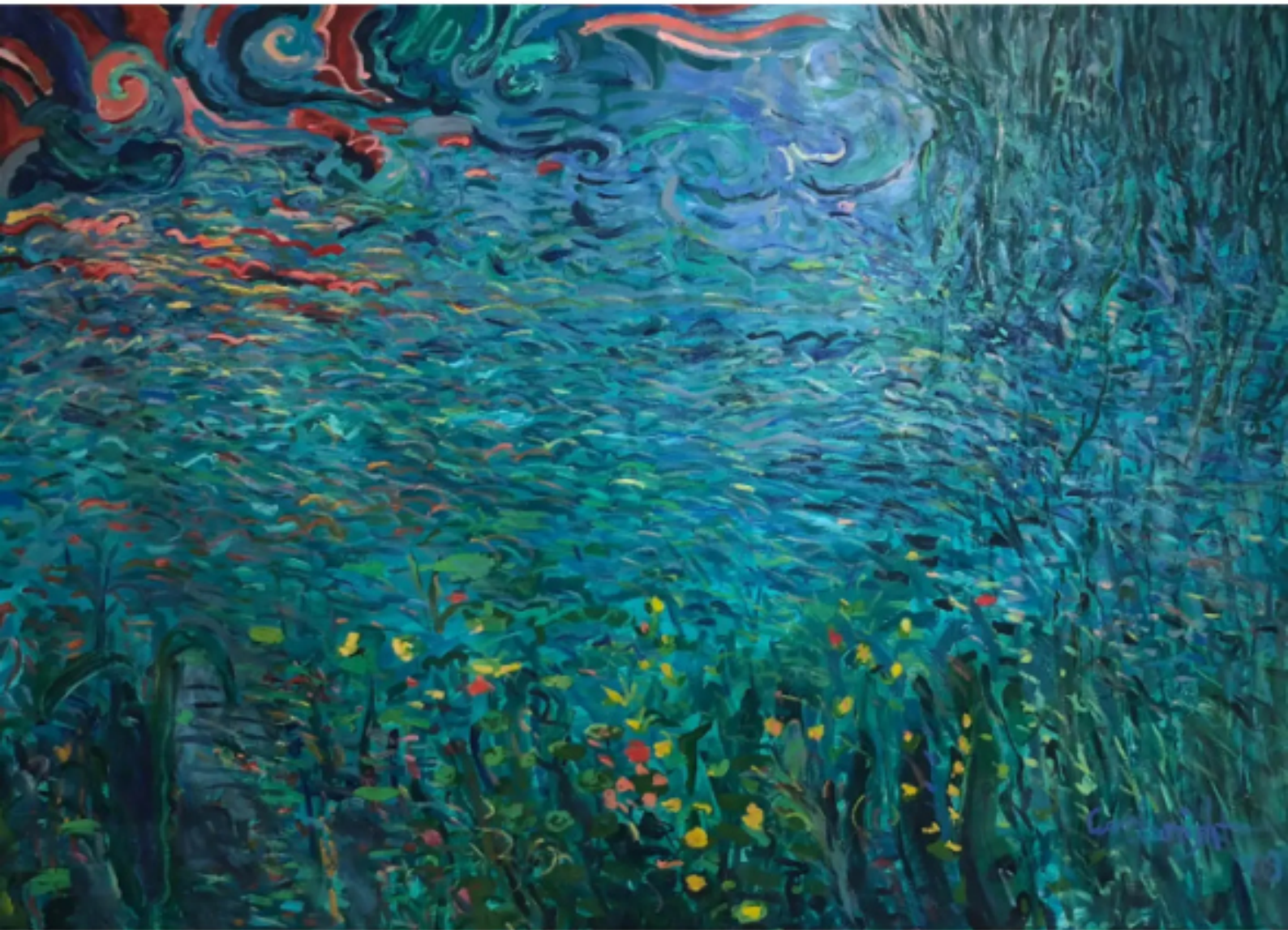
Water Study sunrise

2022
oil on canvas
97 x 240 cm



Sunset

2011
oil on canvas
150 x 190 cm



In 2007 I was commissioned to create a large painting, 50 meters long by up to 5 meters tall. It was to go down the entire spinal wall of the restaurant, Capital M Beijing, overlooking Tiananmen Square. It was an active painting, in the sense people would walk through the middle of it down a staircase and into the main room, waiters would appear through sliding doors imbedded into the painting surface – it was impossible to see the complete painting at one time. In that way it was also like a 3 dimensional sculpture. This panel comes from a wall on the original plan but later deleted.

Water Study I

2009
oil on linen
221 x 300 cm



Water Study

2009
oil on linen
182 x 243 cm



River Study

2018
oil on linen
150 x150 cm



Sunrise

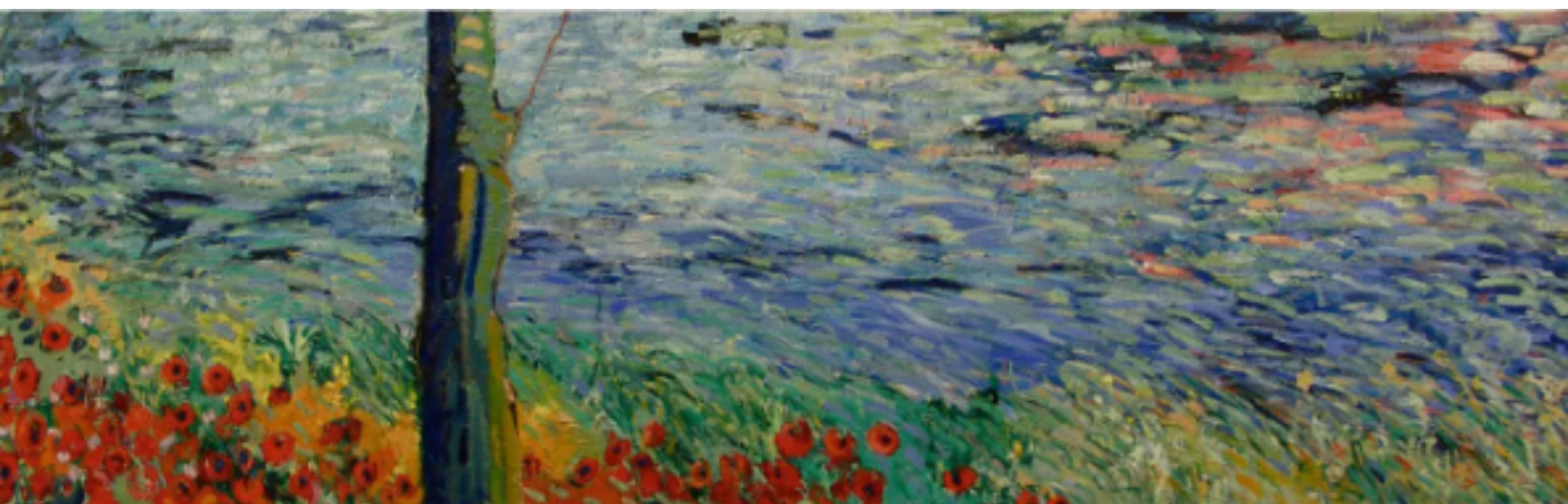
2010
oil on chestnut wood panels
Commissioned for the Presidential suite of the Goldin
Metropolitan Polo Club Hotel, Tianjin - China
200 x 496 cm





River Study

2010
oil on linen
67 x 283 cm



Banks - triptych

Commissioned for Morgan Stanley Head Office

2010

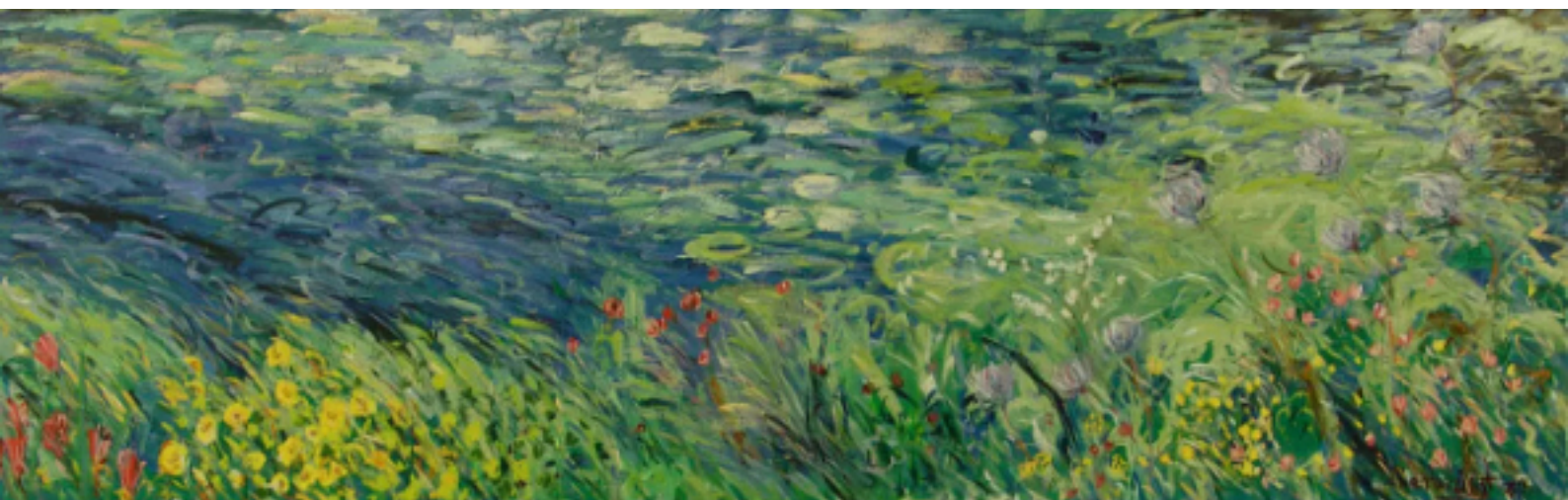
oil on linen

270 x 80 cm each panel



Banks - center panel

2010
oil on linen
270 x 80 cm



Banks - right panel

2010
oil on linen
270 x 80 cm





Setting free the Golden Carp - triptych
Commissioned for the Yew Chung Foundation HK

2011
oil on linen
250 x 500 cm



Cill Rialaig series - county Kerry

2014
oil on linen
73 x 93 cm



This series of paintings came from our second residency at the Cill Rialaig Art Project in county Kerry, Ireland. Every morning before sunrise I would leave our old miners cottage perched on the cliffs overlooking the ocean to paint the changing colours of the weather coming in from the Great Atlantic. The wind could be so strong it would whip the water up from the surface in little cyclones, like Willy Willies whipping up dust in the Australian outback, they would skip along the coast and scream like banshees.



Cill Rialaig series - county Kerry

2014
oil on linen
73 x 93 cm



Cill Rialaig series - county Kerry

2014
oil on linen
73 x 93 cm

