

UConn
ALUMNI

JULY 13-18, 2026

SAN JUAN ISLANDS

Orbridge

WHALES AND WILDLIFE IN THE PACIFIC NORTHWEST

San Juan Islands | Itinerary Highlights *(subject to change)*

Day 1 **ARRIVE IN SEATAC, WA | SAINT EDWARD STATE PARK (KENMORE)** Upon arrival to Seattle-Tacoma International Airport an Orbridge representative will be waiting to assist with your transfer to the property set amid the tranquil forests of Saint Edward State Park in Kenmore. Take time to unwind and explore the lodge's serene walking trails before gathering with fellow travel companions for a special welcome reception followed by dinner. Overnight: The Lodge at St. Edward Park (R,D)

Day 2 **KENMORE | LA CONNER | SOUTHERN SAN JUAN ISLANDS CRUISING | FRIDAY HARBOR** Depart by private motor coach for the scenic drive to La Conner, a charming waterfront town on the Salish Sea. From there, embark upon a touring vessel destined for the San Juan archipelago highlighted with a wine tasting of the region's varietals and delicious crab lunch plus prime wildlife spotting opportunities. This region is known for Southern Resident orcas (which are salmon-hunting pods) and Transient orcas (which prey on seals and sea lions). Watching these magnificent creatures breach or glide through the water is an unforgettable experience. Arriving at Friday Harbor, check into your charming boutique hotel with time to refresh before gathering with the group for dinner at a local restaurant. The remainder of the evening is at leisure. Overnight: Earthbox Inn & Spa (B,L,D)

Day 3 **SAN JUAN ISLAND | FRIDAY HARBOR** Following breakfast join a local guide for a land tour of San Juan Island including American Camp, Lime Kiln Point State Park and English Camp. In between be seated at Westcott Shellfish Company for a Tide Table Lunch—an interactive seafood experience featuring fresh oysters, clams and mussels harvested at the perfect tide level for optimal shellfish quality. Conclude the day with a lovely dinner at a local farm-to-table restaurant. Overnight: Earthbox Inn & Spa (B,L,D)

Day 4 **SUCIA ISLAND | ORCAS ISLAND | FRIDAY HARBOR** Cruise to Orcas Island to walk through Moran State Park before driving to the summit of Mount Constitution for 360° views of the surrounding islands, the Cascade Mountains and even the Canadian Gulf Islands on clear days. Continue to Sucia Island for additional exploration and picnic lunch. Dinner will be at a local restaurant with a special presentation on the region's history, indigenous heritage and marine conservation efforts. Overnight: Earthbox Inn & Spa (B,L,D)



Day 5 **FRIDAY HARBOR | ANACORTES | DECEPTION PASS | ANACORTES** This morning offers the opportunity to join an optional kayaking excursion (*additional fees apply*). Alternatively spend the morning learning about native traditions and history of the coast Salish people on the islands. Mid-morning take advantage of free time to explore Friday Harbor independently with opportunities to visit the Whale Museum and San Juan Island Historical Society. Then depart for a working farm on the island for an immersive, hands-on experience. Meet with local farmers and gain insight into sustainable agriculture, and be seated for a farm-to-table lunch. Later continue by boat to Anacortes on the north shore of Fidalgo Island in Puget Sound. Transfer to a private motor coach for the scenic journey to Deception Pass, one of Washington's most iconic natural landmarks. This evening gather together for a final dinner to celebrate your exciting adventures in the Pacific Northwest. Overnight: Majestic Inn & Spa (B,L,D)

Day 6 **ANACORTES | DECEPTION PASS STATE PARK | SEATAC | DEPART SEATAC** After breakfast visit Deception Pass State Park—more than 4,000 acres of protected forests, beaches and scenic trails. The park offers plenty of opportunities to explore, hike and spot for wildlife including soaring bald eagles, harbor seals basking on rocky outcrops and even the occasional porpoise or whale gliding through the turbulent waters. Later transfer to Seattle-Tacoma International Airport for flights home.

(B = Breakfast, L = Lunch, D = Dinner, R = Reception)

What's Included

- 5 nights accommodations in distinguished properties
- A special welcome reception, 5 breakfasts, 4 lunches (including a picnic-style lunch) and 5 dinners
- Full guiding services of an Orbridge Expedition Leader as well as expert local guides
- All excursions listed on the 6-day itinerary including admission, ferry and port fees
- Private deluxe motor coach with air conditioning and comfortable seating
- Luggage portage
- Gratuities to Orbridge Expedition Leader, local guides, drivers, porters and wait staff for included meals
- Group airport transfers for guests arriving and departing during the suggested times



Activity Level: This program offers a variety of activities, typically not strenuous for guests with average mobility, including skiff rides, hiking and kayaking. Walks and hikes are at a leisurely pace in order to see and learn as much as possible about the region. It's our expectation that guests are able to walk with good balance, and go up and down stairs easily without assistance.



Orbridge

Orbridge Standard of Excellence

Orbridge understands travel today can be complicated. From cabin or room selection to airport transfers, dietary requests, or pre- or post-tour details—we are dedicated to making your journey seamless and special from the moment you leave home.

Our curated destinations—featuring outstanding properties and ships, meticulously crafted itineraries, and knowledgeable guides, travel directors and expedition leaders—offer life-changing experiences you'll never forget.

Our Guest Services team is staffed by well-traveled professionals who provide personalized attention, ensuring all your questions are answered and all the details of your trip are explained to you.

Our air partners can make flight arrangements for guests. In the event of flight delays and/or schedule changes, they will provide guests with personalized assistance. To book flight reservations with our air partners, contact (206) 319-5011 and select the option for your destination to discuss flight details with our air colleagues. Upon ticketing, a fee will be charged.

Accommodations *(subject to change)*

THE LODGE AT ST. EDWARD PARK

Operating as a seminary from 1931 to 1976, this beautifully restored retreat offers refined accommodations, an award-winning spa and an atmosphere of quiet sophistication.



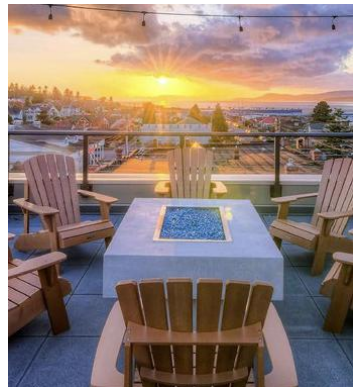
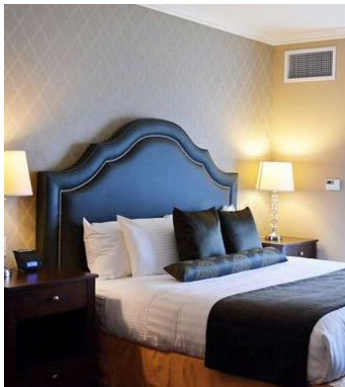
EARTHBOX INN & SPA

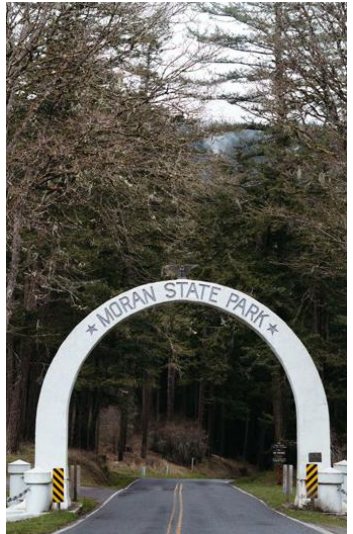
Designed to embrace the laid-back spirit of the San Juan Islands, the hotel blends modern comforts with a coastal atmosphere. During leisure time take advantage of the heated indoor pool and spa or the dry sauna.



MAJESTIC INN & SPA

This beautifully restored boutique hotel features elegant accommodations and a lovely rooftop terrace with stunning views of the San Juan Islands.






JULY 13-18, 2026
RESERVE YOUR SPACE TODAY

Online: uconn.orbridge.com • Phone: (866) 639-0079

Category	Standard Rate	Special Rate*
Double	\$6,399	\$5,895
Single	\$8,299	\$7,795
Optional Excursion		Rate Per Person
Kayaking		\$149
DEPOSIT AMOUNT PER PERSON: \$850		

*Special group rates; limited offer. All rates are per person in U.S. dollars based on double occupancy except where noted as Single. Single availability limited. Unless noted otherwise, airfare is not included. **An exclusive Early Booking Bonus, Expedition Libraries are curated collections of useful resources and background reading tailored to this program. Place your deposit on or before the specified date, and one Expedition Library per room will be sent after receipt of final payment. Libraries may be purchased; call for details. Full Terms & Conditions at terms.orbridge.com. Any payment to Orbridge, LLC constitutes your acceptance of the terms and conditions set out therein, including but not limited to the cancellation and refund terms.

CST#2098750-40 WST#602828994

 Orbridge takes seriously the responsibility to minimize our global environmental impact. Each year we plant 100,000 trees in U.S. State Forests with afforestation needs as an ongoing initiative among our evolving sustainability efforts. Learn more at orbridge.com/going-green.





UConn Alumni Relations
2384 Alumni Drive, Unit 3053
Storrs, CT 06269-3053

SAN JUAN ISLANDS

JULY 13-18, 2026

Special Alumni Rate:

Save more than \$1,000 per couple

30-DAY REFUND GUARANTEE

FREE EXPEDITION LIBRARY
AN EXCLUSIVE EARLY
RESERVATION BONUS

Reserve by
November 7, 2025**

Dear Alumni and Friends,

Join us on an immersive journey through the San Juan Islands—an exclusive small-group sojourn offering extensive exploration of one of North America's most spectacular marine ecosystems.

From the rugged coastlines of remote islands to the tranquil beauty of old-growth forests, each day unfolds with extraordinary wildlife encounters, breathtaking landscapes and unique cultural discoveries. Come experience the raw beauty of the Pacific Northwest in a way that few travelers ever do.

Space is limited. With significant savings of more than \$1,000 per couple, we anticipate this tour will fill quickly. Reserve online at uconn.orbridge.com or call our travel partner, Orbridge, at (866) 639-0079.

Sincerely,

M. Cotton Kelly

Montique Cotton Kelly
Chief People Officer and SVP for Alumni Relations
UConn Foundation

PSRST STD
U.S. POSTAGE
PAID
PERMIT NO. 825
SAN DIEGO, CA