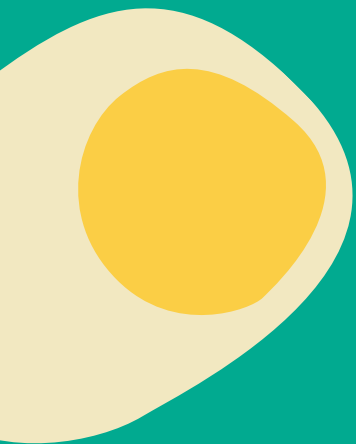




2024 IMPACT REPORT





Hand-drawn art by talented, anonymous children at CCR

TABLE OF CONTENTS

Letter from the Director — **4**

Approach ————— **5**

2024 in Review ————— **6**

Resource Navigation ——— **7**

Community Leadership ——— **8**

At the Village ————— **10**

Partnerships and Stories — **12**

Advocacy ————— **16**

Community Voice ————— **17**

The Future ————— **18**

Thank You ————— **19**



Some names in this report have been changed to protect the privacy of community members.

LETTER FROM THE DIRECTOR

We couldn't have asked for a stronger display of our trust building than we have seen in the past year. In the face of many unknowns, this community has demonstrated **incredible resilience** and we continue to grow together.

Our community connections are so strong, word-of-mouth is our superpower. A new resident from Ukraine **heard about us when she lived in Poland**. Right after moving to Casino Road, she joined programs, connected with neighbors, and now has even spoken at city council meetings with us.

Thanks to the trusted relationships we have built with community and partners, we will continue to thrive in the face of shifting circumstances like we've always done.

When The Village first opened at the beginning of the Coronavirus pandemic, we brought our **partnered foodbank** onsite following community concerns about food security during lockdown. When more residents reported difficulty accessing healthcare, we partnered with **health clinics** to increase access to care. From 2023 to 2024, our number of partnerships increased from 11 to 24. Now, we are bringing quarterly **immigration legal clinics** which 17 permanent resident, visa-holding, and refugee families have already taken advantage of to navigate the next steps on their immigration journey.

Looking at our journey and unwavering engagement, **we see that we have become the community hub we have always strived to be**. That doesn't mean the work is over. **It is only just beginning.**

We are at a critical time locally and nationally. But in the face of uncertainty and fear, **this community speaks louder**. Together with our partners, the community, **and you**, CCR will continue to be the **safe, trusted community space for every resident in this neighborhood—always**.



Alvaro Guillen
Director



APPROACH

We have updated our mission and vision to better reflect our work in the Casino Road community as we move forward to become an independent 501c3 nonprofit.



VISION

All families in Casino Road reach their **full potential**. They are thriving economically, advocating for themselves, and experiencing the joy of a **welcoming, healthy, and connected community**.



MISSION

Guided by the long-marginalized voices of Casino Road, we address **systemic barriers, build agency, and foster a sense of belonging** for all community members. As the anchor organization of The Village community center, **we connect families to resources and steward trusting relationships** among local families and partner organizations that contribute to an **upwardly mobile community**.



THEORY OF CHANGE

As we take another step toward 501c3 independence, we've updated our approach to align with Urban Institute's Upward Mobility model. This model focuses on **Dignity & Belonging, Power & Autonomy, and Economic Success**: a perfect alignment of how CCR has and will continue to commit to the Casino Road community.

2024 IN REVIEW

3,116+ people helped at The Village in 2024



150 listening session attendees

172 community members registered for onsite English language acquisition classes with Everett Community College with the help of our resource navigator



In our community where many lack a personal computer in the home, **35 residents learned smartphone and technology skills** to improve communication and support their education and employment journeys

RESOURCE NAVIGATION



Our bilingual community resource navigation, led by Leonor Bejarano, is the centerpiece connecting community members to our partner programs and external resources.

In 2024, she saw **1,200 visits**, with an average of 2 visits per visitor. This speaks to the **value and comfort** residents receive in meeting with Leonor.

Though Leonor came to us with years of experience, she thrives in our unique structure of onsite partnerships, which helps **build trust and be flexible** to help people thoroughly and personally instead of relying on complicated referrals.

In the spring of 2024, out of surveyed resource navigation visitors....

100% felt more knowledgeable about community resources

81% expected to save money that month thanks to introduced resources

97% were able to access a new service

“Out of the 5 years that I have been a resource navigator, I feel very fortunate in being able to sit down and help every family as much as I can, **helping them break language and systemic barriers.**”
—Leonor Bejarano

Popular resources residents accessed through navigation:

- The Y
- Food, clothing, and diapers
- Medical insurance and clinics
- School district information

- Career pathways and English classes
- Legal support and clinics
- Navigating forms, vouchers, and applications





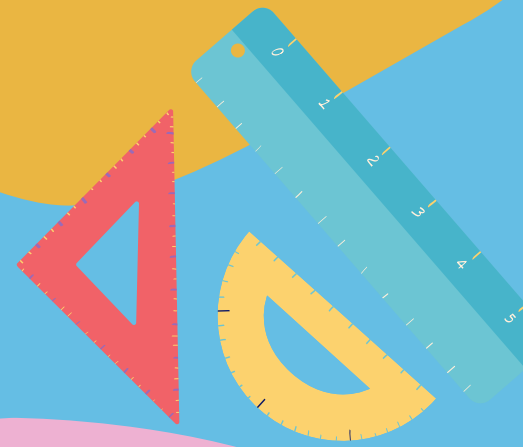
COMMUNITY LEADERSHIP



KIDS' CLUB

Childcare during Everett Community College's onsite English class has always been a challenge for parents. Mothers even advocated to the city for support! **At CCR, students then came together to form their own collaborative for children's activities during each other's classes.**

CCR provides space, runs background checks, and brings CPR classes with translators for all participating adults. Now, **more students complete their classes** knowing their kids are safe and having fun!



"In addition to studying English, I learned a lot from the children and their different cultures."

—Jasmine, Kids' Club participant



Mujeres Empoderadas Por Las Familias

A group of 10 mothers at CCR formed an **empowerment and advocacy group for themselves and their children**. To support, in 2024 we brought workshops on confidence and soft skills that the group requested.



“I was amazed how many people are going through the same things as me. ... It’s great to share with others because you reflect yourself off of them. I learned to recognize myself in that way, to see my traits on others. **It’s helped me find who I am.**”
—Ruth



Safety Committee

Together with Snohomish County Emergency Management, CCR brought awareness of natural disaster preparedness to Casino Road. Community members volunteered to become local safety ambassadors and helped **1,298 residents** sign up for local safety alerts, making sure **no community members are left behind** in the face of a natural disaster.



AT THE VILLAGE

“The Village has shown me the beauty and kindness of humanity.”

—MARCO



SUBS POOL

CCR partnered with Imagine Institute to train 15 community members in substitute childcare. **All 15 women received their certificate** in January 2024, and by September had collectively worked nearly **1,000 hours**. Two graduates now have full-time positions, and another is using her skills to open her own childcare business.



TALK TIME

CCR implemented a **volunteer-led English conversation hour** in the evenings in response to community feedback on increasing English language programs. Community members now gather to casually practice their speaking skills while getting to know each other!

CELEBRATIONS

CARNIVAL

Our summer Carnival hosted over **500 Casino Road residents** who spent a day of laughter and joy playing games and soccer, face painting, staying cool with popsicles, and even taking driver's seat in a fire truck!



WINTERTIDE

As the weather cooled, Wintertide came once more—and better than ever! The wider community and partners came together to donate **over 300 toys for Casino Road youth** this holiday season: a new record! This year, Wintertide also featured a free photo booth, capturing seasonal photos for dozens of families.



PARTNERSHIPS...

SOUND EXPERIENCE

32 youth, including 2 interns, sailed the Puget Sound for a week with Sound Experience aboard the Schooner Adventuress!

For many, it was their first time sailing on a boat. They learned how to keep watch, how to work together like a crew, and explored the San Juan Islands!

When they disembarked from the Adventuress for the final time, they left singing sailing songs together.



TAKE A PEEK
ABOARD THE SCHOONER
ADVENTURES!



LAHAI & MTI

Community members identified preventative healthcare as a priority. In response, CCR coordinated with Lahai health for weekly bilingual health clinics and Medical Teams International for quarterly dental clinics, seeing a combined 89 patients in the first 4 months!

87% said the Lahai clinic prevented an ER or Urgent Care visit for their family.



...AND THEIR STORIES



PATRICIA AND SON

From knowing all the CCR staff to joining parenting support groups, Patricia has become entwined in the fabric of our community. She expressed how at first she lacked the confidence to go to school, but after seeing other women in the community chase their dreams, she thought, **“I can do that, too.”**

Now, inspired, she will complete her associate’s degree and begin her bachelor’s program in fall 2025. Patricia hopes to work in social services. She also highlights the transformation in her son since coming to CCR: once a moody preteen, he transformed during our partnered summer camp with The Y. He excelled in leadership and even won an award. He told his mother that he **had no idea there were opportunities like the one he experienced.**

He has since gone **sailing on the Puget Sound** through our Sound Experience partnership, has **been interviewed for KIRO 7 TV**, and decided he wants to become a counselor so he can **give back to others like him.**



**WATCH ON
KIRO 7!**

RUTH

*“This is a **safe place** for me. ... Coming here feels like **family.**”*

Ruth and her husband moved to the Casino Road neighborhood from Peru. Enthusiastic and friendly, they are eager to share both their love of the United States and the comfort of a community space that reflects their culture. Ruth joined the community-led women’s empowerment group, and values the space to connect and learn from one another. “I like to share my experiences and hear other’s to learn from them.”

Ruth’s dream is to build up a small business for her crocheting. “I can make anything. Stuffed animals, clothes, scarfs... crochet is my therapy.” Ruth is now a student in Everett Community College’s onsite English classes, adding to her skillset to make her dream come true.



PARTNERSHIPS...

IMMIGRATION CLINIC

In our first immigration legal clinic with Snohomish County Legal Services and the Latino Bar Association of Washington, **17 families** received personal guidance regarding the next steps in their immigration journey! Several more clinics are planned for 2025.



SMALL BUSINESS GROWTH

With PIM Savvy, Express Credit Union, and Greater Seattle Business Association (GSBA)

Three financial and business-focused partners come together onsite to form a **powerful pathway** for Casino Road entrepreneurs:

Express Credit Union helps residents without Social Security Numbers to apply for **Individual Tax Identification Numbers (ITINs)**

PIM Savvy helps residents apply for **small business licenses** with ITINs

GSBA holds workshops on **planning and marketing small businesses**

...AND THEIR STORIES



MARCO has been a familiar face since before CCR came to anchor partnerships at The Village.

As a child, Marco would be onsite with his little sister in ChildStrive's childcare program while his mother attended English class. As he entered middle school, he enjoyed helping the staff entertain the infants. "I've always been a very big helper, and I feel a part of it was because of The Village."

Meanwhile, he formed friendships onsite through Kid Ministries' Bible study, and his sister learned to swim by getting connected to The Y. **Marco went on to graduate college with a double degree**, while being deeply involved in diversity and inclusion efforts on campus. Nowadays, his family is still attending weekly programs at The Village. Marco himself is more involved than ever: **he now works for one of our onsite partners.**

"The Village had a profound impact on who I am as a person, my values... if it wasn't for it, I feel like I'd be a different person."



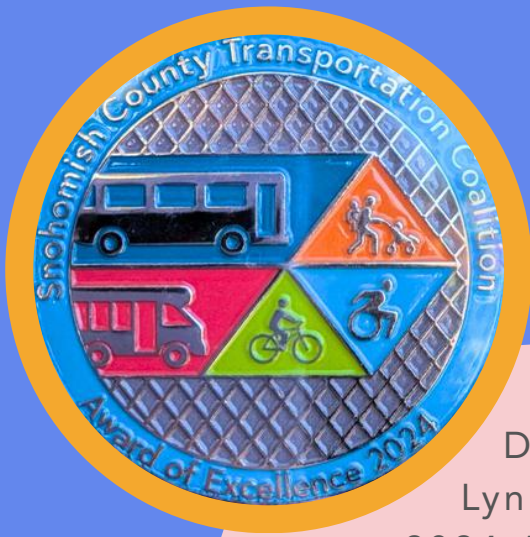
WANDA and her family came to CCR to join our family case management program, as she juggled preparing for her citizenship test amidst her family recovering from an apartment fire.

Together, we helped her family recover, and we looked toward the future. We connected Wanda to onsite English classes, preschool for her child, financial education and job safety trainings, citizenship test preparation, and more. Wanda put the skills learned to use in her career and unshakably pursued her citizenship application. During her case management graduation in November, she thanked CCR:

"When we arrived in this state, we felt disoriented and didn't know anything...**Thanks to [the CCR team] I will see one of my goals fulfilled:** becoming a citizen of this country."

Wanda was recently granted her US Citizenship. She came to CCR to tell staff the news, even before going home to share with her family.

ADVOCACY



During the opening ceremony for the Lynnwood light rail station, CCR received the 2024 Award of Excellence by the Snohomish County Transportation Coalition for **community engagement and anti-displacement advocacy** with Everett's own incoming light rail station.

2024 was the first year Snohomish **County Voter Pamphlets were available in Spanish**, thanks to CCR advocacy for better language accessibility. We will continue to advocate so **citizens of all backgrounds can participate in democracy**.

We held **3 listening sessions** to hear resident thoughts on **community priorities, transportation, and a future vision for our neighborhood**. Community priorities have been shared with local government, and we will report back to the community on their impact in 2025.



COMMUNITY VOICE

According to residents...

Community's Top Assets:

- CCR / The Village
- The community
- Latin shops
- Neighborhood parks
- Mujeres sin Fronteras
- New public safety measures



Community Priorities:

- Transit: more frequent service, covered bus stops, longer routes
- Maintain walkability
- Career skills: English, computers and technology, beauty

Housing Needs:

- lower rent costs
- more condominiums
- well-maintained housing



FUTURE 2025 - 2026

Leadership workshops and organized opportunities for residents to speak at **city council meetings**

Addition of **live language interpretation** to community resource navigation, making us more effective to all in the community

Regularly hosted **Immigration legal clinics**

The case management program will sunset so all three program staff can move to roles that will help us reach more families in our neighborhood and be even more responsive to evolving community needs:

a second bilingual **Community Resource Navigator**, a **Community Engagement & Events Manager**, and an **Operations & Program Coordinator**

We will confirm our new board reflective of the Casino Road community in 2025 and obtain our independent **501c3 status** by **early 2026**

THANK YOU



Our biggest thanks to the **individuals, foundations, and organizations** who have supported us in the past year. **YOU** are the driving force that brings **resource navigation, education, leadership opportunities, legal clinics, healthcare, and JOY** to our community. Thank you.

A special thank you to our Joy sponsors:



COASTAL
COMMUNITY BANK



GET INVOLVED

There are a lot of ways to make a difference together with the Casino Road community. Here are some places to get started:

Sign up for our quarterly newsletter on our website, connectcasinoroad.org

Volunteer and help us bring workshops, programs, and events to The Village. Contact Yelitza Medina at yelitza@cf-sc.org | (425) 280-2438 to join our volunteer list

See for yourself how your involvement with our programs and partnerships impacts Casino Road families. Reach out to **Genna Kilduff** at genna@cf-sc.org | (425) 320-5220 to **schedule personal tour** of our community center campus

Support the community and our innovative partnerships, space, and programs:





CONNECT
CASINO ROAD

14 E Casino Rd, Ste A
Everett, WA 98208
www.connectcasinoroad.org