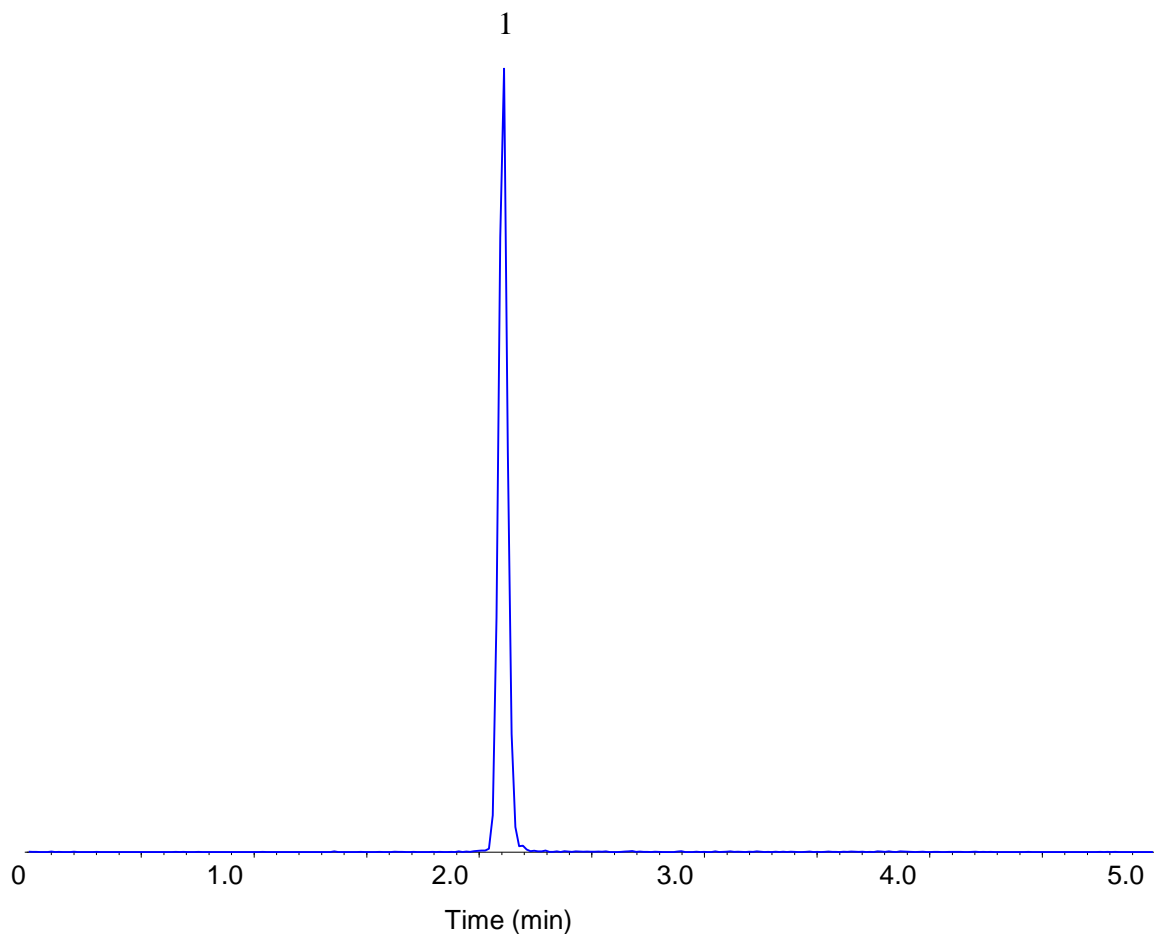


InertSearch™ for LC

Inertsil™ Applications

Analysis of Fumonisin B1

Data No. LB600-0954



Conditions

Column : MonoSelect C18 for HTS (20 x 2.1 mm I.D.)
Column Cat. No. : 5020-10811
Eluent : A) CH₃CN
 : B) 0.1% HCOOH in H₂O

Analyte:

1. Fumonisin B1 100 ng/mL

Time(min)	A(vol%)	B(vol%)
0.00	20	80
3.00	95	5
3.01	20	80
5.00	20	80

Flow rate : 0.3 mL/min
Col. Temp. : 40 °C
Detection : MS/MS (ESI, Positive, SRM)
Injection Vol. : 1 μL
Sample : Standard

* An LC system optimized for high-throughput analysis was used.