



COTSWOLD
SCULPTORS



CREATING SPACES 2026

AT

MISERDEN

3 JUNE - 2 AUGUST 2026

Wed - Sun 10-5pm

EXHIBITION GUIDE

Website

Contents



Contents

About CSA

About Creating Spaces 2026

The Artists

Artist Index

The Sculptures

- Outdoor -

- Indoor -

Miserden Estate

How to Buy

Maps

back page

Sharing a passion for sculpture

Formed in 2017, the **Cotswold Sculptors Association** is a not-for-profit organisation which has grown to around 130 members. We celebrate the creation and appreciation of sculpture across the region, supporting both established and emerging artists through exhibitions, collaboration and connection.

The exhibition is put together wholly by our members, who volunteer their time with the helpful assistance of the Miserden estate.

cotswoldsculptorsassociation.com/miserden

Welcome to the 2026 Miserden Garden Sculpture Exhibition, a highlight of the Cotswold Sculptors Association calendar set within the beautiful surroundings of Miserden.

This year, we are delighted to celebrate the return of our indoor exhibition at the Club Room. Don't miss visiting this more intimate experience alongside the sculptures placed throughout the gardens.

As Chair, I warmly invite you to explore and enjoy the richness and diversity of work on display.

Gina Baum

Chair of Cotswold Sculptors

About **CREATING SPACES 2026**

This summer, Creating Spaces returns again to Miserden. Explore an inspiring collection of sculpture set against the beautiful backdrop of the formal garden and in the intimate surroundings of the Club Room. As you follow the historic paths - **see the *Garden Map*** - discover over 100 sculptures within the wonderful planting.

A rich mix of styles and mediums, from striking abstract forms to expressive figurative pieces, all by members of the Cotswold Sculptors Association.



About CREATING SPACES 2026

Back for 2026: Indoor exhibition in the Village Club Room

Leave your car in car park and take a short stroll up the village, opposite the pub. Get up close with smaller works, detailed craftsmanship and pieces designed specifically for interiors. No ticket needed for indoor exhibition. - ***see venue location map*** -





Now in its fifth year, the Cotswold Sculptors Association 'Creating Spaces' exhibition is a highlight of the season at Miserden.

The Garden is so familiar to me and yet year on year, seeing artworks nestled quietly among the plants and trees, the Garden becomes fresh and enchanting in new and unexpected ways, as it was when I was a child. A sculpture glimpsed through fresh foliage or standing sentinel beneath the canopy of a tree invites a moment of pause, drawing the eye and sparking the imagination. Each piece feels at once a discovery and a conversation with its surroundings, as if it has always belonged there.

As you wander through the garden, these carefully placed works create a sense of wonder and quiet magic. We hope that you enjoy discovering the sculptures as much as we enjoy hosting them.

Nicholas Wills

Miserden Estate owner

Prize Draw

You could win this small ceramic wall sculpture by member, **Jenny Baddeley**.

To enter, simply post an image of one of the sculptures to your insta or Facebook feed; including hashtag **#CSAWIN2026**, and tag and follow our account:

@cotswold_sculptors_association.



Your post should be publicly visible at closing date on 8th August 2026. Ts and Cs on website.

Good luck!

Sculpture Prizes

We are delighted to thank **Tiranti** for their generous support of *Creating Spaces 2026*.

As a long-standing supplier to sculptors and makers, Tiranti have kindly provided **two £250 vouchers**, to be awarded to outstanding works in the exhibition for:

- **Best Indoor Sculpture**
- **Best Outdoor Sculpture**

These prizes recognise creativity, craftsmanship, and originality across the diverse range of work on display.

We are extremely grateful to Tiranti for supporting both the artists and the continued success of this exhibition.



Tiranti

potterycrafts.co.uk



 Tiranti

- STONECARVING TOOLS
- WOODCARVING TOOLS
- SCULPTURE STANDS & PEDESTALS
- SCULPT NOUVEAU PATINAS & FINISHES
- GILDING LEAF & ACCESSORIES
- FILES, RASPS & RIFFLERS
- MODELLING MATERIALS & TOOLS
- MOULD MAKING MATERIALS & TOOLS
- STUBAI TOOLS
- MODELLING CLAY



Tiranti C300 Centricast Casting & Mouldmaking Machine



Sculpt Nouveau Patinas



Tiranti Stainless Steel Rifflers Tool 8 Piece Set



Chavant Hard Non Sulphurated Modelling Clay

01782 745000

sales@pottery crafts.co.uk



Pottery crafts & Tiranti



Pottery crafts_Tiranti



Little Ginger



AT MISERDEN

29th April – 27th September

Open Wed-Fri
10am-4pm,
& Weekends and Bank Holidays
10am-4.30pm

Delicious light lunches, cakes,
coffees and refreshments from our
independent café.

We can't wait to see you in the
garden again soon!





THE CARPENTERS ARMS



A 16th Century Cotswold pub in
the hidden beautiful village of
Miserden.

Open Mon-Sat

Food

11am - 9am

Sunday

12 - 7pm

Bar

11am - 11pm

Sunday

12 - 10.30pm

Miserden, Birdlip, Gloucs

GL6 7JA

Tel: 01285 821283



VICTORIA WORKS STUDIOS

A creative hub of artist studios,
workshops and exhibitions in
Stroud's beautiful Golden Valley






general@victoriaworksstudios.co.uk
London Road, Chalford, Stroud, GL6 8HN

www.victoriaworksstudios.co.uk



APEX ART SERVICES



Mould-making,
bronze casting support
Jesmonite casting,
armatures,
fabrication and
consultation from an
artist-technician with
20 years' experience.
Hands-on support to
realise ideas, build, cast,
and resolve technical
challenges with care
and attention.
Feel free to get in touch.



07566208214



@apexartservices



apex.benbroadbent.com



apex@benbroadbent.com



LS
SCULPTURE
CASTING

www.lssculpturecasting.com
david@lssculpturecasting.com

07711 150448
 [lsculpture_casting](https://www.instagram.com/lsculpture_casting)

 **Jan Bruce**
Sculpture

janbruce.co.uk

Meet the artists

Whenever you visit, you'll find some of our sculptors on hand, volunteering as stewards in the garden or the Club Room. They'll help you with info about the exhibition, their own work and can also help you to buy one of the sculptures.

Read on to find out more about the artists featured in this year's show.

Some artists have more than one piece featured. Find out more on our website or in the online brochure, where you can also see an up-to-date list of work which is still available to purchase.

See cotswoldsculptorsassociation.com/miserden



Talks and demos

Look out for our special event days on our website.

Group demonstration day on Saturday July 25th: A number of sculptors will be working on pieces live and will be happy to talk you through their process. There may also be opportunities to 'have a go' yourself.

Meet the artist day on Sunday June 14th, 10am - 1pm: Join us for an informal walk and talk with some of our sculptors.



The Artists

Adam Rush

Each and every piece Adam works on is based on personal experience. A touch of humour accompanies topics of anxiety, depression, and temporality; resulting in artworks that are expressive and touching, and develop an instant connection with the viewer.



Outdoor: -

Indoor: 115 - 117

Cover

17

Contents



The Artists

Amy Ng

Amy's sculptures explore contemporary expression through her inner spiritual vision. She transforms natural wood with deliberate, artificial interventions, re-imagining nature in refined black, glossy forms. Her work reflects imagination, discipline, and a continual pursuit of beauty.



Outdoor: 1, 2

Indoor: 118 – 120

Cover

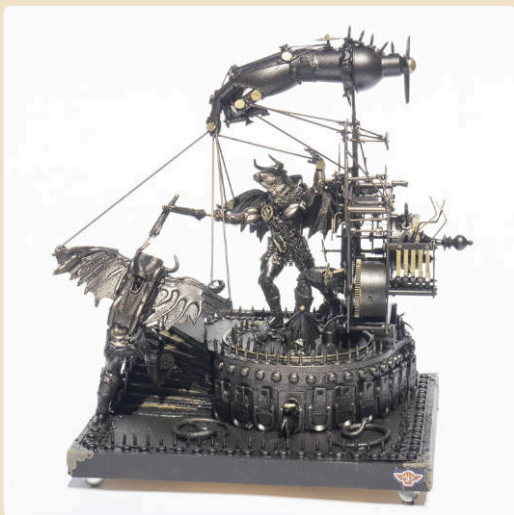
18

Contents

The Artists

Andrew Stevens

The Winged Minotaurs are a distinctive leitmotif defined by their unique concept and execution. Continuing this theme inspires Andrew to continue to creatively explore new perspectives and evolve ideas, contributing to the dynamic and expanding language of contemporary sculpture.



Outdoor: -

Indoor: 121, 122

Cover

19

Contents

The Artists

Angela Williams

Angela works mainly in glass and ceramic tiles to produce pieces that are vibrant, inventive and unique. She takes her inspiration from the relationship between design and the architectural qualities of the natural world, combining these sculptural forms with mosaic.



Outdoor: 3, 4

Indoor: -

Cover

20

Contents

The Artists

Ann Pegg

Working in clay for over 10 years, Ann's current project was inspired by the nearby landing of the Winchcombe meteorite. The 'Battered Moon' series explores the idea of moons as natural satellites in space created by the collision of elements.



Outdoor: 5, 6

Indoor: -

Cover

21

Contents

The Artists

Anna Simson

Anna Simson graduated with an MA in Ceramics from Bath Spa university in 2018. Anna's work responds to the living world using stoneware and porcelain clays. Her work is held in private collections across the UK and internationally.



Outdoor: 7 – 9

Indoor: 123 – 125

Cover

22

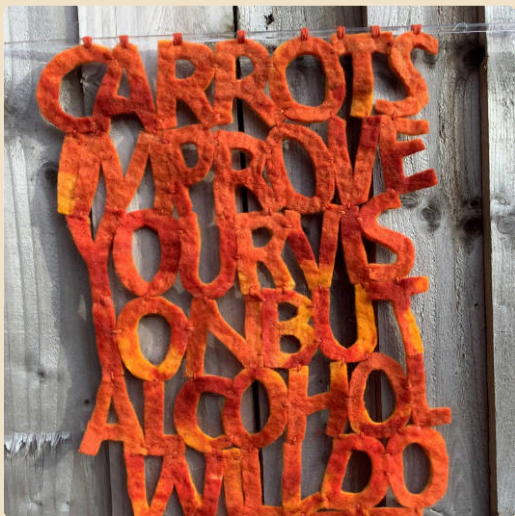
Contents



The Artists

Bailey Curtis

Bailey has been a felt maker for over 40 years. She processes the wool directly from the sheep's fleece, dyeing & carding it. Bailey attended Cheltenham College of Art, & East Berkshire College, textile department.



Outdoor:

-

Indoor:

126

Cover

23

Contents

The Artists

Bea Green

Having exhibited internationally for 25+ years, Bea is presently inspired by the impact of climate change on daylight levels as well as natural forms. Bea's "The Enlighteners" stoneware sculptures aim to prompt reconsideration of our lifestyles and are suitable for outdoors.



Outdoor: 10 – 13

Indoor: 127, 128

Cover

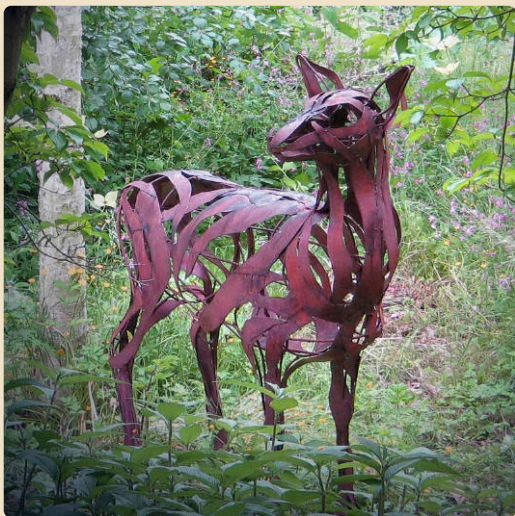
24

Contents

The Artists

Ben Broadbent

A rust-coloured steel deer formed from metal ribbons suggests movement and presence rather than solidity. The open structure captures the energy of a fleeting encounter — a moment of stillness where human and wild briefly meet, then pass.



Outdoor: 14

Indoor: -

Cover

25

Contents

The Artists

Carol Orwin

An Animalier, interested in the muscular form, movement, power, and nature of the animal without compromising the anatomical integrity of the sculpture.

Carol makes her own moulds and casts, ensuring that she retains complete control over the finished piece, including patination.



Outdoor: 15 – 17

Indoor: -

Cover

26

Contents

The Artists

Clare Mahoney

Clare explores the tension between fragility and emotional resilience; striving to capture the fleeting beauty of nature, and what it is to be human. She builds her porcelain pieces by hand, adding intricate surface patterns that flow across the "landscape".



Outdoor: -

Indoor: 129

Cover

27

Contents

The Artists

Clare Stephens

Clare Stephens creates vessels that interact with viewers, objects, and their environment. Empathy, acceptance, and unity are mirrored by varied clays, making and firing techniques. Informed by parallels from her midwifery career and explorations in her MA in Ceramics (2023).



Outdoor: 18, 19

Indoor: 130

Cover

28

Contents



The Artists

Daren Greenhow

Daren's medium of choice is steel, using welding as the primary joining technique. His work is figurative and abstract, large and small, indoor and outdoor. He models a diverse range of subjects including mammals, fish, birds, insects.



Outdoor: 20 – 23

Indoor: -

Cover

29

Contents

The Artists

Darren Rumley

Concrete as you've never seen it. Most of Darren's work is both sculptural and functional; suitable for home, garden, corporate and public spaces. He loves to work on projects that have the potential to give many people joy.



Outdoor: 24

Indoor: -

Cover

30

Contents

The Artists

Debs Harrison

Deborah's work invites connection between material and meaning, surface and soul; echoing nature and the stone's unseen narrative. She's won several international awards; is an expert tutor and was recently commissioned to carve a gift for King Charles III.



Outdoor: -

Indoor: 131

Cover

31

Contents



The Artists

Diana Zapata Mejia

The human body and psyche are subject to continual and unpredictable changes, vulnerability and fragility. In Diana's artistic practice she delves in to these themes, communicating her vision through work that reflects the transient and delicate nature of human existence.



Outdoor:

-

Indoor:

132

Cover

32

Contents

The Artists

Eleanor Lachab

Fascinated by the commonality of geometric forms in sacred art, Eleanor seeks to apply these ideas in her glass work. Each pattern is recreated using light and line to create a unique and meditative piece of art.



Outdoor: 25

Indoor: -

Cover

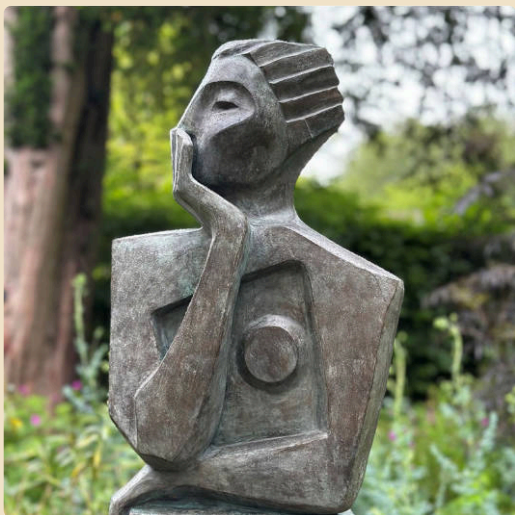
33

Contents

The Artists

Elizabeth Leyland

Elizabeth's sculpture tends towards abstractions of reality - blending angles, curves and the spaces they contain or become. She is particularly focused on giving shape to the female experience; finding new ways of expressing the female form.



Outdoor: 26 – 28

Indoor: 133

Cover

34

Contents

The Artists

Ellie Harrison

Working in bronze, Ellie's series examines 13 types of love through culture and history. Each type has only one sculpture.

Philia poses three figures whose relationship to each other is uniquely determined by the viewer.



Outdoor: 29

Indoor: -

Cover

35

Contents

The Artists

Elliot Dylan Quinn

Elliot Dylan Quinn explores survival as adaptation, giving form to aftermath, silence, and the strategies used to endure compromised conditions. Their work results in the creation of psychologically-charged forms, which examine how identity is shaped under pressure, control, and intrusion.



Outdoor: -

Indoor: 134 – 136

Cover

36

Contents

The Artists

Ewan Preston

Ewan's work focuses on exploring the tensions and symbiosis between polar opposites, whether literal or metaphoric. He works in various mediums but particularly clay, in seeking to capture that "space between": celebrating the dynamic potential of the union of opposites.



Outdoor: 30

Indoor: -

Cover

37

Contents

The Artists

Ewen Hyde

Ewen's sculptures are almost entirely constructed using reclaimed and salvaged materials, often the nature of the materials providing the inspiration for the work itself. This results in entirely unique pieces which are each cut, ground, formed and welded by hand.



Outdoor: 31 – 33

Indoor: -

Cover

38

Contents

The Artists

Gina Baum

"What Remains" is an installation of unique poppy seedheads, each representing an individual life. Referencing remembrance, the work considers what endures after the petals fall: the seed heads hold inherited potential, the past is carried forward and not forgotten.



Outdoor: 34

Indoor: -

Cover

39

Contents

The Artists

Glen Farrelly

Glen Farrelly (RCA) creates work from unwanted and storm-fallen wood. Shaped by experiences of the wildfires in California and his fascination of ancient standing stones, his fully reclaimed practice advocates environmental awareness and reflects on climate change.



Outdoor: 35 – 37

Indoor: -

Cover

40

Contents

The Artists

Gordon Senior

Inspired by hunter-gatherers who used seeds of wild grasses – wild einkorn, emmer, barley and rye.

Over 10,000 years ago grain crops were developed by ancient farming communities.



Outdoor: -

Indoor: 137, 138

Cover

41

Contents

The Artists

Graham Hawkins

Graham creates for the home and garden using predominantly steel, which he allows to rust and complement nature.

He does not believe that art always needs a deeper meaning; as such his quirky works aim to garner an instant reaction.



Outdoor: 38 – 40

Indoor: 139

Cover

42

Contents

The Artists

Hayley Jones

Hayley Jones is a self-taught artist who transitioned from a painter to wire-sculptor.

She uses a variety of single strand wires, including copper, steel and aluminium to construct intricate animal and bird forms. She has sold both nationally and internationally.



Outdoor: 41 – 45

Indoor: -

Cover

43

Contents

The Artists

Helen Greene

Helen has pursued her love of horses through sculpture, where she tries to capture their inner grace and nobility. Through her spontaneous response to working in clay, she creates movement and reflects their inner beauty resulting in "living equine sculptures".



Outdoor: 46

Indoor: 140, 141

Cover

44

Contents

The Artists

Jacqui Sheard

Jacqui is a Lacock-based sculptor whose figurative work captures the quiet intensity of human expression. Her practice investigates human expression and materiality, informed by a professional background in design, seeking a deeper connection between people, memory and the natural world.



Outdoor: -

Indoor: 142

Cover

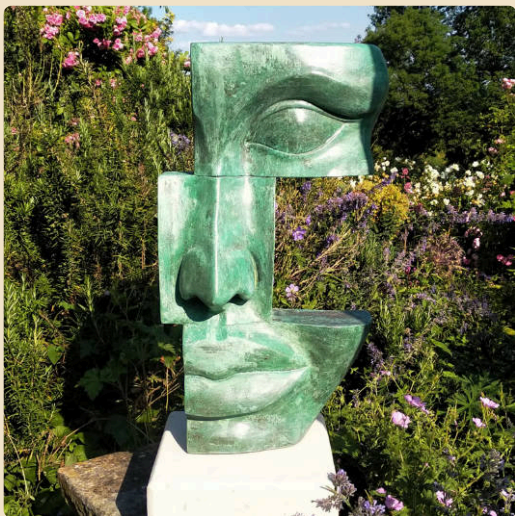
45

Contents

The Artists

James Connolly

James Connolly is an artist equally at home carving the beautiful limestone of this region or casting pieces in bronze resin. He has been sculpting in the Cotswolds for over thirty years.



Outdoor: 47 – 49

Indoor: -

Cover

46

Contents

The Artists

Jan Bruce

Jan Bruce is a British stone sculptor whose figurative work explores emotion, connection, and the human condition. Balancing representation with semi-abstraction, his sculptures invite quiet reflection through tactile form, flowing geometry, and a deeply instinctive relationship with stone.



Outdoor: 50 – 53

Indoor: 143 – 145

Cover

47

Contents

The Artists

Jane Yarnall

Jane works out of her Bath-based garden studio; in both ceramics and glass. She enjoys experimenting, seeking ways to marry the two mediums. Lauded by the Craft Council as an emerging talent, she has an MA Design (Ceramics) from Bath.



Outdoor: 54

Indoor: 146, 147

Cover

48

Contents

The Artists

Jennie Regan

Jennie's Inspiration comes from the natural world, especially the Somerset countryside, Jurassic coast and Georgian Bath. Her hand-carved work shows intimate connection with the salvaged local stone, with all marks considered and intentional. Shape, form and light are key elements.



Outdoor: 55, 56

Indoor: -

Cover

49

Contents

The Artists

Jenny Baddeley

Jenny has been working with clay for over 30 years; nowadays from her little blue studio in Horsley. She's often inspired by the unspoiled views to create work that looks like something found in nature, but is a little other-worldly.



Outdoor: 57

Indoor: 148, 149

Cover

50

Contents

The Artists

Jenny Waller

Jenny Waller is a textile artist who studied at Morley College and who has exhibited in both London and Somerset. She works with felt, embroidery and wire to create three-dimensional displays: playful narratives which celebrate aspects of the natural world.



Outdoor: -

Indoor: 150, 151

Cover

51

Contents

The Artists

Jeremy Mouldsdale

Jeremy's work is a celebration of his connection between nature and spirit, self and landscape. His sculptures reflect his reverence for the mystery, majesty, and wonder of life.



Outdoor: 58 – 60

Indoor: -

Cover

52

Contents

The Artists

Jeremy Wyatt

Jeremy makes metal, stone and colourful perspex pieces. He's taught college-level art, takes corporate and family commissions, exhibits with the National Trust and is a member of Marlborough Open Studios; Surrey Craftsmen's Guild and Contemporary Jewellery Association.



Outdoor: 61 – 66

Indoor: 152, 153

Cover

53

Contents

The Artists

Johannes Steuck

Johannes uses mostly limestone, it carries within itself the memory of water, making it a perfect medium for organic forms. He tries to simulate the effect of the elements, the action of wind, the abrasion of sand in water.



Outdoor: -

Indoor: 154 – 156

Cover

54

Contents

The Artists

Juli Bharucha

Juli's work threads together concepts entwined with our emotional inner worlds and the invisible forces that underlie every decision we make.

Expressed in porcelain, the twists and turns play with shadows and light, inviting the viewer to seek and discover.



Outdoor: -

Indoor: 157, 158

Cover

55

Contents

The Artists

Kate McMahon-Parkes

At this time of ecological crisis, Kate explores themes of fragility, the resilience of nature, and ultimately hope for the future.



Outdoor: 67

Indoor: -

Cover

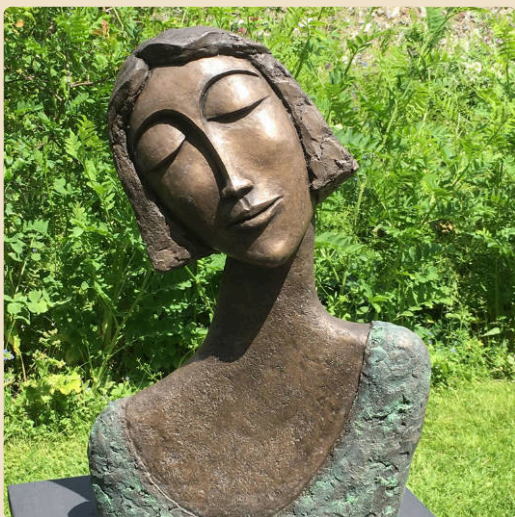
56

Contents

The Artists

Kay Singla

Kay's work is tactile and contemporary, reflecting themes of peace, happiness, joy, and togetherness. She exhibits and sells her work in the UK and internationally, deservedly winning sculpture Awards in 2013, 2022 and 2024.



Outdoor: 68 – 72

Indoor: 159, 160

Cover

57

Contents

The Artists

Kiki Black

Home is where your heart is. Kiki explored this theme in her artworks as well as thinking of the fragility of home and our beautiful planet. This helped to inspire her sculptures she created in Stoneware clay.



Outdoor: -

Indoor: 161, 162

Cover

58

Contents

The Artists

Kim Pethybridge

Kim's work includes a diverse collection of both Abstract and Figurative pieces. She mainly uses Limestone becoming totally absorbed in the process by carving directly using traditional methods and tools; this gives a personal connection with the piece of stone.



Outdoor: 73 – 75

Indoor: 163, 164

Cover

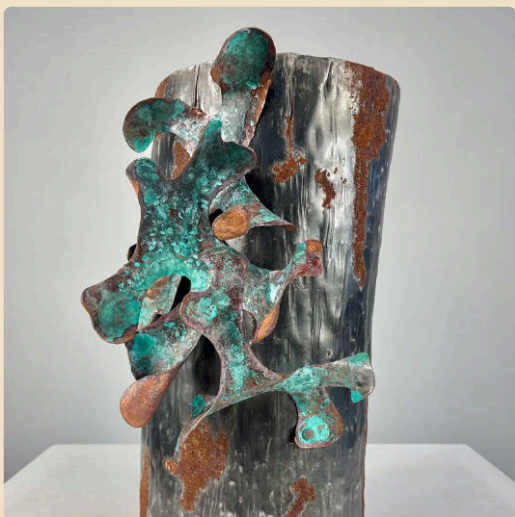
59

Contents

The Artists

Lynda Knott

Lynda is a mixed media artist who aims to bring notice to the forgotten and overlooked, creating a nonconventional beauty. In the two pieces for this exhibition she has focused her attention on common lichens collected on her walks.



Outdoor: -

Indoor: 165, 166

Cover

60

Contents

The Artists

Lynne Littler

Lynne is a wire artist inspired by wildlife especially British birds. Using mainly stainless steel wire as her medium of choice Lynne uses few tools to create her pieces relying mainly on her hands to do the work.



Outdoor: -

Indoor: 167, 168

Cover

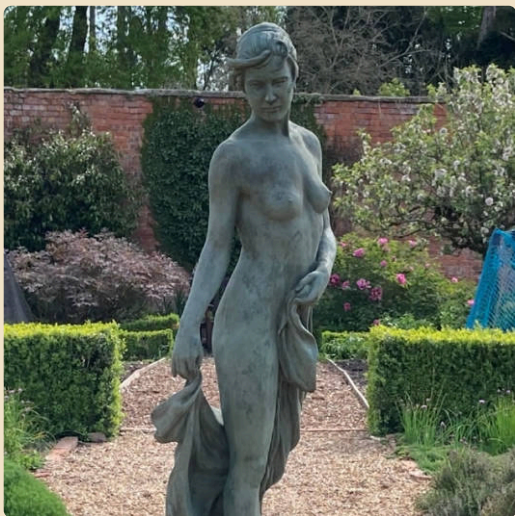
61

Contents

The Artists

Malcolm West

Professional artist Malcolm's work is inspired by dance and mythology. He endeavours to produce work of elegance, grace and beauty, working in many different mediums - sculpture, painting, drawing and jelly beans.



Outdoor: 76, 77

Indoor: 169, 170

Cover

62

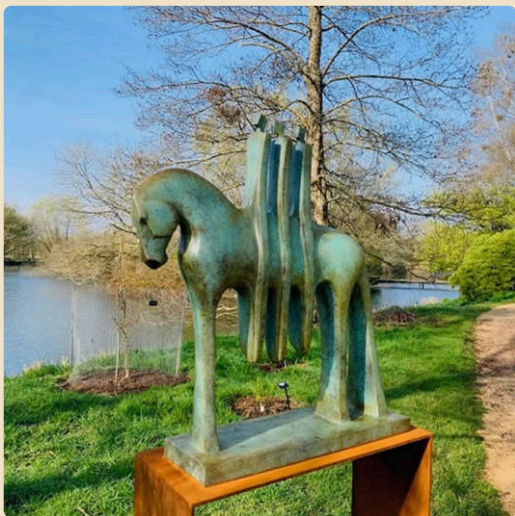
Contents

The Artists

Marie Ackers

Marie's work explores animal presence, strength, and movement through geometry; emphasising rhythm and form.

She aims to go beyond realism and tradition to capture a contemporary work that capture the essence of the subject and speak to the soul.



Outdoor: 78 – 80

Indoor: -

Cover

63

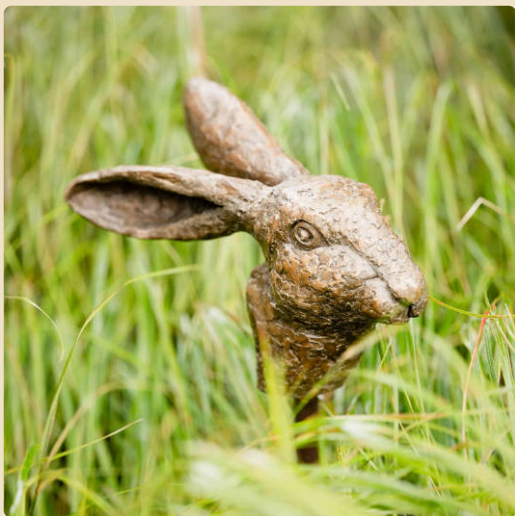
Contents



The Artists

Marie Shepherd

Marie Shepherd is an artist based in Oxfordshire who creates sculptures in Bronze or Bronze Resin for home and garden. She explores the sensitivity and dynamism of the human form, the humour in animals and the pleasing shape of fruits.



Outdoor: 81 – 83

Indoor: -

Cover

64

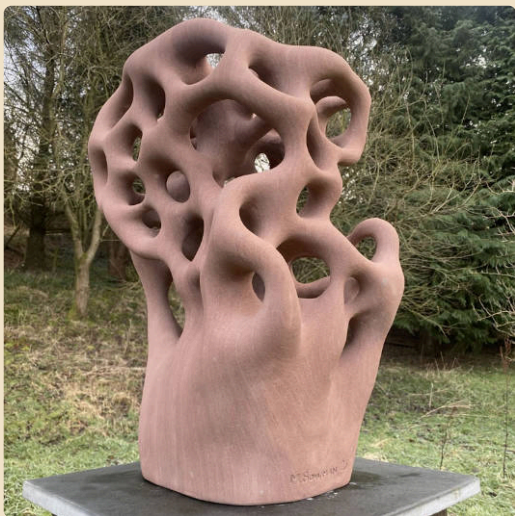
Contents

The Artists

Mark Bowman

Mark's sculptures explore the interplay between organic form and structure.

Having recently discovered the plight of the world's coral populations, Mark has produced a body of work that explores imagined bleached coral and organic forms.



Outdoor: 84, 85

Indoor: 171 – 173

Cover

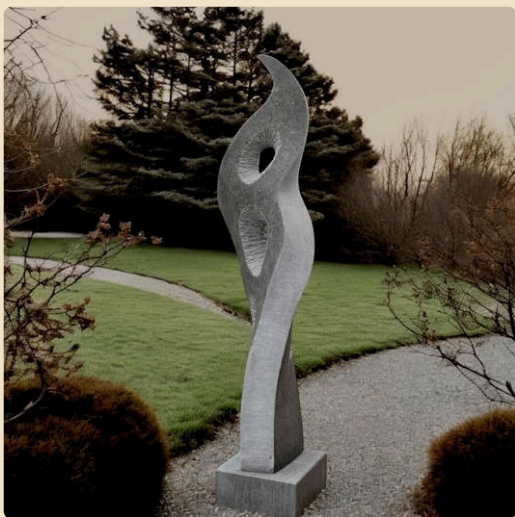
65

Contents

The Artists

Martin Cash

Martin Cash is a sculptor who works predominantly with British stone, valuing craftsmanship and longevity. His sculptures are widely sought by those seeking unique, often large forms that enhance their surroundings, generating reflection and pleasure.



Outdoor: 86, 87

Indoor: 174 – 176

Cover

66

Contents

The Artists

Martin Clarke

Martin delights in creativity, recycling and innovation. Over 20 years of experimenting have taken him from concrete to found materials: driftwood, stone, recycled metal, shells; foraging in local woods, natural paint and pigments and now, local wild clay and pit firing.



Outdoor: 88, 89

Indoor: 177 – 179

Cover

67

Contents

The Artists

Martin Elphick

Martin Elphick is an established sculptor using a variety of materials. Enjoying the challenge of commissions and set themes for curated exhibitions, as well as his own experimental ideas and methods, his work is often unpredictably different.



Outdoor: -

Indoor: 180, 181

Cover

68

Contents



The Artists

Mikhail Mandrigin

Mikhail Mandrigin began modelling work from the age of 3 and received formal training as a sculptor from 13. Mikhail graduated of Royal Academy Schools of Art and AA School of Architecture and combines work as a Sculptor and Architect.



Outdoor: 90, 91

Indoor: 182

Cover

69

Contents

The Artists

Nobuko Okumura

Nobuko, known for her small-scale jewellery, expands into sculpture with Matsu-mori. Inspired by walks in nature, the work reflects slowed observation.

Formed from 25,000 copper pins, it translates jewellery's meticulous, repetitive processes into an immersive sculptural presence and spatial



Outdoor: -

Indoor: 183

Cover

70

Contents

The Artists

Peter Nava

Peter creates stylised figurative or abstract sculptures in limestone and alabaster; sometimes using surplus or reclaimed stone. Inspired by simple tools and forms of ancient and medieval masons, he works without drawings or maquettes; in a process of sculptural discovery.



Outdoor: -

Indoor: 184 – 186

Cover

71

Contents

The Artists

Piotr Gargas

Piotr Gargas is a stone sculptor working with marble and natural stone. His practice includes monochromatic forms that explore contrast and organic structure, transforming material into contemporary sculptures.



Outdoor: 92, 93

Indoor: 187 – 189

Cover

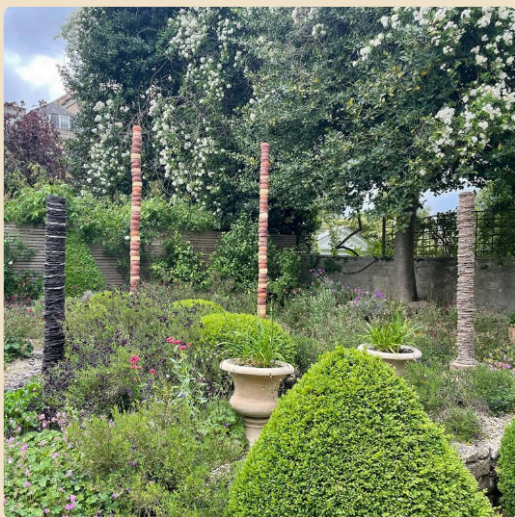
72

Contents

The Artists

Rachel Demuth

Ceramic artist Rachel Demuth makes hand-built, site-responsive works exploring landscape and loss. Her recent work explores Ash dieback on Minchinhampton Common through ceramic monuments called steles, which commemorate the Ash trees and raise awareness.



Outdoor: 94

Indoor: -

Cover

73

Contents

The Artists

Raymond Wirick

Raymond collaborates with natural form by adding shape and purpose to existing materials. The beauty of wood is nurtured, maintained and listened to whilst the sculptor controls the outcome.



Outdoor: 95

Indoor: 190

Cover

74

Contents

The Artists

Renee Kilburn

Renée creates vibrant stoneware sculptures, frost proof and suitable outdoors. She aims to evoke the smile that automatically comes when seeing the wonders of colours and shapes in nature; with intricate, bright and shiny surfaces, with a sense of movement.



Outdoor: 96 – 102

Indoor: -

Cover

75

Contents

The Artists

Rosalind Seegobin

Fire and earth are fundamental to man's existence. Ros uses proformers and creates surface textures with impressed packaging, oxides and glazes.

Her inspiration is taken from thermal vents and the structures that begin to form around molten materials.



Outdoor: 103

Indoor: -

Cover

76

Contents

The Artists

Sally Grant

Sculpture to Sally stands at the moment between stillness and motion when time slows for us before moving on. She is inspired by capturing these points in time in a permanent material giving a continuing presence to our experiences, as do our memories.



Outdoor: 104

Indoor: 191, 192

Cover

77

Contents

The Artists

Sara King

Sara's work focuses on the human form and sense of identity. 'Affinity' responds to our connections with water: body composition can range between 50-75% water, whilst emotionally many of us are drawn to its beauty and playful qualities.



Outdoor: 105

Indoor: -

Cover

78

Contents

The Artists

Sarah Davis

Sarah Davis is a glass artist, based in Slimbridge, Gloucestershire, specialising in vibrant, unique stained glass designs, often focusing on natural themes. Sarah is gradually exploring more sculptural forms, embracing the challenge of going beyond traditional stained glass practice.



Outdoor: 106

Indoor: 193, 194

Cover

79

Contents

The Artists

Shirley Sharp

A conga line of figures share a playfulness that borders on the absurd.

Character is used by Shirley to explore the serious and humorous sides of human nature.

The forms here suggesting vulnerability with a sense of movement and fun.



Outdoor: 107

Indoor: -

Cover

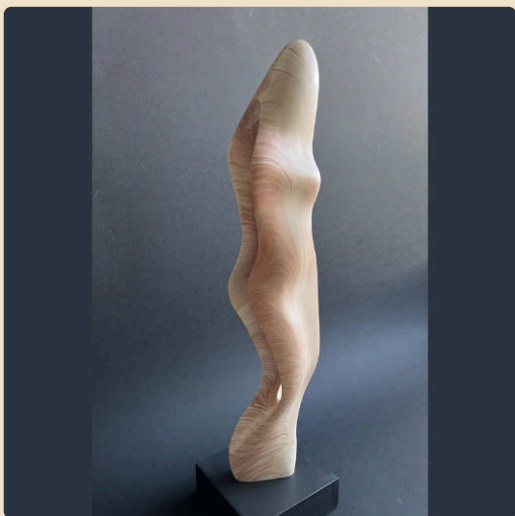
80

Contents

The Artists

Simon Denman

Simon explores creative processes inspired by a love of natural science to arrive at pieces evoking a sense of mindfulness. Recent works seek to reflect the processes leading to the veining of natural stone.



Outdoor: -

Indoor: 195, 196

Cover

81

Contents

The Artists

Stuart Stockwell

Stuart's unique kinetic sculptures interpret nature's genius and sacred geometry, in union with modern design. He balances simplistic beauty with complex function, refining metal and concrete into elegant curves; to create a feeling of movement in static rest.


Outdoor: 108 – 111

Indoor: -

Cover

82

Contents



The Artists

Sue Navin

Sue carves with hand tools, these 2 horses were carved from a log of cherry. The tree was recently felled and the carving was designed to work with the green wood to avoid cracking as it shrank as it dried.



Outdoor: -

Indoor: 197

Cover

83

Contents

The Artists

Terry Merritt

Chichester-based Sculptor Terry Merritt hand carves beautiful sculptures from various stones. He's inspired by the natural beauty of the human anatomy, human gestures, and movement, exploring the human form combining curves, lines, and negative voids in the form of abstraction.



Outdoor: 112

Indoor: 198, 199

Cover

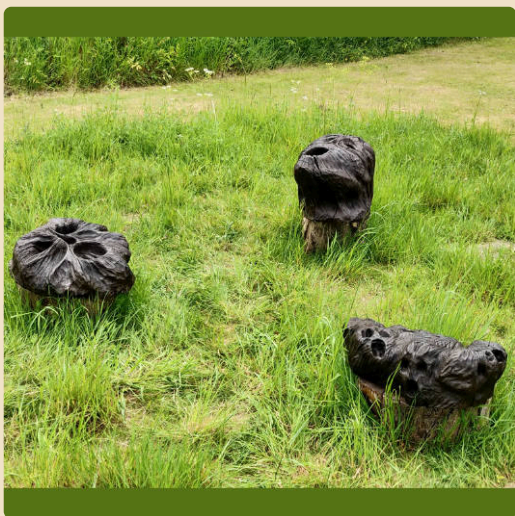
84

Contents

The Artists

Tim Wells

Tim works exclusively in sustainably sourced wood. Searching for form and character using the mediums natural qualities with imperfections embraced and enhanced. Tim prefers the observer to become a participant. Each piece can be held and explored in detail.



Outdoor: 113

Indoor: 200

Cover

85

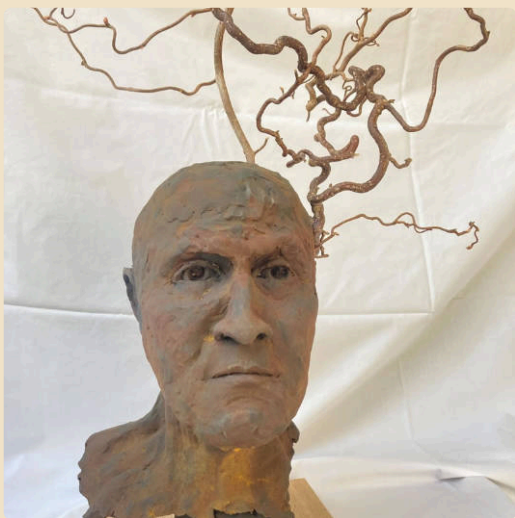
Contents



The Artists

Tina Holbrook

Tina's work is mainly figurative from life. Both Tree Man and Book Girl reflect her desire to breathe life, personality and interest into her subjects, bringing out their individual personalities.



Outdoor: -

Indoor: 201, 202

Cover

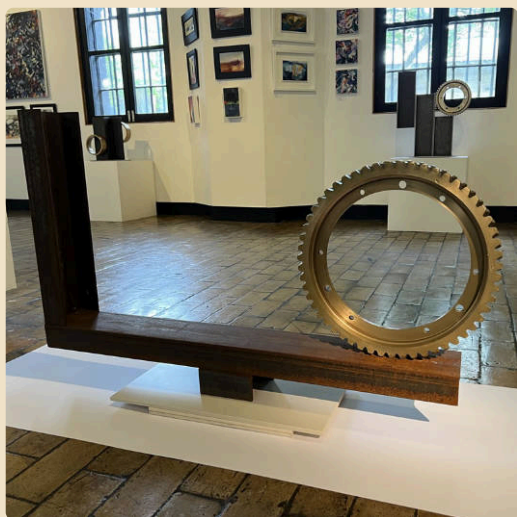
86

Contents

The Artists

Tom Watson

Tom is a Bristol based abstract sculptor working mainly in metal but also with a variety of other materials. He is particularly interested in form, texture, space and creating wonder in his work.



Outdoor: 114

Indoor: 203, 204

Cover

87

Contents

The Artists

Young Melmoth

This clay ram reflects the artist's deep connection with nature, inspired by time spent on a sheep farm in Cornwall. It captures the quiet strength and presence of the animal.



Outdoor: -

Indoor: 205

Cover

88

Contents



Artist Index

Artist	Page	Outdoor sculptures	Indoor sculptures
Adam Rush	17	-	115 – 117
Amy Ng Kam-Mei	18	1, 2	118 – 120
Andrew Stevens	19	-	121, 122
Ange Williams	20	3, 4	-
Ann Pegg	21	5, 6	-
Anna Simson	22	7 – 9	123 – 125
Bailey Curtis	23	-	126
Bea Green	24	10 – 13	127, 128
Ben Broadbent	25	14	-
Carol Orwin	26	15 – 17	-
Clare Mahoney	27	-	129
Clare Stephens	28	18, 19	130
Daren Greenhow	29	20 – 23	-
Darren Rumley	30	24	-
Deborah Harrison	31	-	131
Diana Zapata Mejia	32	-	132
Eleanor Lachab	33	25	-
Elizabeth Leyland	34	26 – 28	133
Ellie Harrison	35	29	-
Elliot Dylan Quinn	36	-	134 – 136
Ewan Preston	37	30	-
Ewen Hyde	38	31 – 33	-
Gina Baum	39	34	-
Glen Farrelly	40	35 – 37	-



Artist Index

Artist	Page	Outdoor sculptures	Indoor sculptures
Gordon Senior	41	-	137, 138
Graham Hawkins	42	38 – 40	139
Hayley Jones	43	41 – 45	-
Helen Greene	44	46	140, 141
Jacqui Sheard	45	-	142
James Connolly	46	47 – 49	-
Jan Bruce	47	50 – 53	143 – 145
Jane Yarnall	48	54	146, 147
Jennie Regan	49	55, 56	-
Jenny Baddeley	50	57	148, 149
Jenny Waller	51	-	150, 151
Jeremy Mouldsdale	52	58 – 60	-
Jeremy Wyatt	53	61 – 66	152, 153
Johannes Steuck	54	-	154 – 156
Juli Bharucha	55	-	157, 158
Kate McMahon-Parkes	56	67	-
Kay Singla	57	68 – 72	159, 160
Kiki Black	58	-	161, 162
Kim Pethybridge	59	73 – 75	163, 164
Lynda Knott	60	-	165, 166
Lynne Littler	61	-	167, 168
Malcolm West	62	76, 77	169, 170
Marie Ackers	63	78 – 80	-
Marie Shepherd	64	81 – 83	-



Artist Index

Artist	Page	Outdoor sculptures	Indoor sculptures
Mark Bowman	65	84, 85	171 – 173
Martin Cash	66	86, 87	174 – 176
Martin Clarke	67	88, 89	177 – 179
Martin Elphick	68	-	180, 181
Mikhail Mandrigin	69	90, 91	182
Nobuko Okumura	70	-	183
Peter Nava	71	-	184 – 186
Piotr Gargas	72	92, 93	187 – 189
Rachel Demuth	73	94	-
Raymond Wirick	74	95	190
Renee Kilburn	75	96 – 102	-
Rosalind Seegobin	76	103	-
Sally Grant	77	104	191, 192
Sara King	78	105	-
Sarah Davis	79	106	193, 194
Shirley Sharp	80	107	-
Simon Denman	81	-	195, 196
Stuart Stockwell	82	108 – 111	-
Sue Navin	83	-	197
Terry Merritt	84	112	198, 199
Tim Wells	85	113	200
Tina Holbrook	86	-	201, 202
Tom Watson	87	114	203, 204
Young Melmoth	88	-	205



The Sculptures

Outdoor



Availability Key



= sold, unique



= sold, more available

The Sculptures - Outdoor

1



Black Swan

Amy Ng Kam-Mei

Unique

£3,800

2



Egg Two

Amy Ng Kam-Mei

Unique

£2,600

3



Gridlocked

Ange Williams

Unique

£300

4



Timeless

Ange Williams

Unique

£990

5



Battered Moon 2

Ann Pegg

Unique

£120

6



Battered Moon 3

Ann Pegg

Unique

£120



The Sculptures - Outdoor

7



Pieces of Me I

Anna Simson

Unique

£350

8



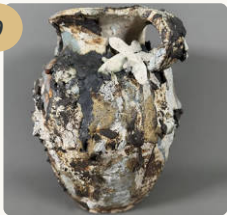
Pieces of Me II

Anna Simson

Unique

£350

9



Pieces of Me III

Anna Simson

Unique

£350

10



Consideration at Sea

Bea Green

Unique

£699

11



Consideration between
Sisters

Bea Green

Unique

£690

12



Consideration in a Smile

Bea Green

Unique

£980



The Sculptures - Outdoor

13



Consideration in the
Family

Bea Green

Unique

£495

14



Red Doe

Ben Broadbent

Similar

£2,300

15



Otter Nonsense

Carol Orwin

Edition 12 of 25

£700

16



Shaggy Dog Story

Carol Orwin

Edition 20 of 25

£1,500

17



To Sort that Itch

Carol Orwin

Edition 15 of 25

£900

18



Empathies Movement 1

Clare Stephens

Similar

£450

The Sculptures - Outdoor

19



Precarious Strength

Clare Stephens

Unique

£500

20



Dinosaur

Daren Greenhow

Open

£695

21



Fish on a Unicycle

Daren Greenhow

Open

£495

22



Hawk

Daren Greenhow

Open

£235

23



Owl on a T-Stand

Daren Greenhow

Open

£120

24



The Tear Drop

Darren Rumley

Open

£4,999

The Sculptures - Outdoor

25



Dusk

Eleanor Lachab

Unique

£2,860

26



Muse

Elizabeth Leyland

Edition

£1,800

27



Siren

Elizabeth Leyland

Edition

£1,800

28



The Dream

Elizabeth Leyland

Edition

£1,400

29



Philia

Ellie Harrison

Unique

£8,500

30



Union

Ewan Preston

Unique

£790

The Sculptures - Outdoor

31



Fighting Cocks

Ewen Hyde

Unique

£850

32



The Futility of War in the
Name of Religion

Ewen Hyde

Unique

£895

33



Vulture

Ewen Hyde

Unique

£850

34



What Remains set of 10

Gina Baum

Similar

£300

35



A message of renewal

Glen Farrelly

Unique

£1,395

36



Temair

Glen Farrelly

Unique

£995



The Sculptures - Outdoor

37



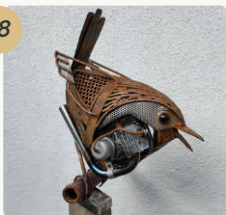
Tlachtga

Glen Farrelly

Unique

£1,995

38



WRENGine

Graham Hawkins

Unique

£830

39



Flat Out

Graham Hawkins

Unique

£1,300

40



Urgent Dispatch

Graham Hawkins

Unique

£565

41



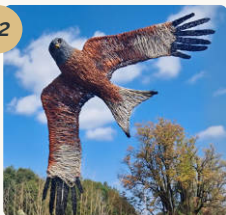
Closed Wing Barn Owl

Hayley Jones

Unique

£1,950

42



Red Kite

Hayley Jones

Unique

£1,695



The Sculptures - Outdoor

43



Sleeping Barn Owl

Hayley Jones

Unique

£1,845

44



Standing Flamingo

Hayley Jones

Similar

£900

45



Wings Out Flamingo

Hayley Jones

Unique

£900

46



Freedom

Helen Greene

Edition 1 of 9

£2,500

47



Black Face Mask

James Connolly

Unique

£850

48



Head in Three Blocks

James Connolly

Edition 10

£1,750

The Sculptures - Outdoor

49



Head in Three Parts

James Connolly

Unique

£1,250

50



Love

Jan Bruce

Similar

£2,200

51



One

Jan Bruce

Similar

£2,200

52



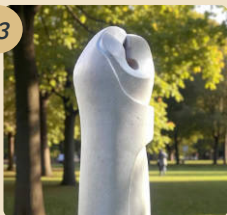
Safe

Jan Bruce

Similar

£2,200

53



Shared Thought

Jan Bruce

Similar

£2,200

54



Abalone Shell

Jane Yarnall

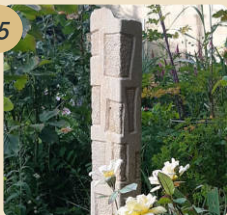
Unique

£145



The Sculptures - Outdoor

55



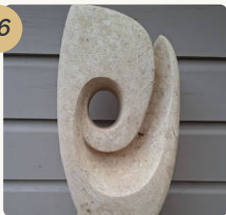
Rise

Jennie Regan

Unique

£600

56



Void Within

Jennie Regan

Unique

£800

57



Fat Cat

Jenny Baddeley

Unique

£375

58



Rise

Jeremy Mouldsdales

Edition 20

£3,100

59



Sky Bound

Jeremy Mouldsdales

Edition 20

£4,600

60



Spirit of Wonder

Jeremy Mouldsdales

Edition 20

£2,200

The Sculptures - Outdoor

61



Are They Listening

Jeremy Wyatt

Similar

£575

62



Circle of Leaves

Jeremy Wyatt

Unique

£575

63



Conversations with
family, friends and lovers

Jeremy Wyatt

Similar

£475

64



Jellyfish

Jeremy Wyatt

Unique

£425

65



Swift Totem

Jeremy Wyatt

Similar

£295

66



Trapped Rainbows

Jeremy Wyatt

Similar

£675

The Sculptures - Outdoor

67



From the Fires - Triptych

Kate McMahon-Parkes
Unique £560

68



Content

Edition *Kay Singla* £895

69



I'm in Love

Edition *Kay Singla* £900

70



Peace Love and
Calmness Within

Edition *Kay Singla* £1,850

71



Pretty Woman

Edition *Kay Singla* £1,750

72



When I Saw You

Edition *Kay Singla* £1,800



The Sculptures - Outdoor

73



Barn Owl

Kim Pethybridge

Unique

£350

74



Continuous Form

Kim Pethybridge

Unique

£485

75



Shadow Dance

Kim Pethybridge

Unique

£360

76



Artemis

Malcolm West

Edition 6 of 15

£2,500

77



Freestyle with Attitude

Malcolm West

Edition 3 of 15

£2,800

78



The Midnight Owl

Marie Ackers

Edition 25

£1,900



The Sculptures - Outdoor

79



The Night Keeper

Marie Ackers

Edition 25

£1,800

80



The Three Riders

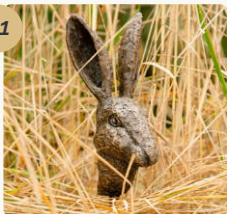
- *Withdrawn* -

Marie Ackers

Edition 8

£6,500

81



Alert Hare

Marie Shepherd

Edition 40

£495

82



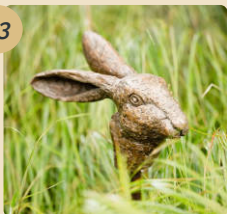
Curled Up Dachshund

Marie Shepherd

Edition 45

£850

83



Relaxed Hare

Marie Shepherd

Edition 40

£495

84



Copse III

Mark Bowman

Unique

£2,850



The Sculptures - Outdoor

85



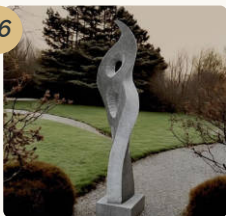
Erosion VII

Mark Bowman

Unique

£2,950

86



Strike a Pose

Martin Cash

Unique

£7,400

87



The Life Within

Martin Cash

Unique

£8,600

88



Coupling

Martin Clarke

Unique

£495

89



Explorer I

Martin Clarke

Unique

£105

90



Flourish 7

Mikhail Mandrigin

Edition 10

£450



The Sculptures - Outdoor

91



Star Burst 1

Mikhail Mandrigin

Edition 10

£450

92



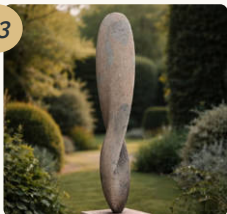
Elpis

Piotr Gargas

Similar

£7,500

93



The Key

Piotr Gargas

Similar

£6,500

94



Ash Tree Stele Group of 5

Rachel Demuth

Unique

£5,000

95



Peacock Bench

Raymond Wirick

Similar

£900

96



Blood Orange Wall
Flower

Renee Kilburn

Unique

£350



The Sculptures - Outdoor

97



Flora Vase

Renee Kilburn

Unique

£1,300

98



Large Bird

Renee Kilburn

Similar

£200

99



Medium Bird

Renee Kilburn

Similar

£150

100



Pink Flower Bird Bath

Renee Kilburn

Unique

£3,500

101



Set of 3 Hydrangeas

Renee Kilburn

Similar

£420

102



Small Bird

Renee Kilburn

Similar

£90



The Sculptures - Outdoor

103



Boulders (8)

Rosalind Seegobin

Similar

£1,200

104



Spring

Sally Grant

Unique

£2,500

105



Affinity

Sara King

Unique

£2,995

106



Barn Owl

Sarah Davis

Similar

£125

107



Let's all do The Conga
(whole group)

Shirley Sharp

Unique

£900

108



Acer

Stuart Stockwell

Open

£1,400

The Sculptures - Outdoor

109



Little Ginkgo

Stuart Stockwell

Open

£800

110



Little Oak

Stuart Stockwell

Open

£800

111



Petals

Stuart Stockwell

Open

£1,850

112



Calla Arum

Terry Merritt

Unique

£4,750

113



The Beginning

Tim Wells

Unique

£1,500

114



On The Edge

Tom Watson

Unique

£1,800



The Sculptures

Indoor



Availability Key



= sold, unique



= sold, more available



The Sculptures - Indoor

115



Contemporary Classical
Face Jug
Adam Rush

Unique

£320

116



Deeper Into Your Anxiety

Adam Rush

Unique

£750

117



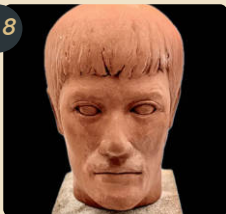
Struggle for Control

Adam Rush

Unique

£950

118



Bruce

Amy Ng Kam-Mei

Unique

£800

119



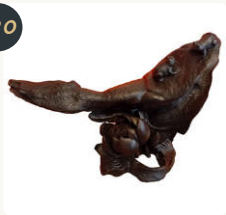
Lonely Frog

Amy Ng Kam-Mei

Unique

£1,900

120



Under the Moon

Amy Ng Kam-Mei

Unique

£2,900



The Sculptures - Indoor

121



Duel in the Labyrinth

Andrew Stevens

Unique

£375

122



Minotaurs Last Journey

Andrew Stevens

Unique

£375

123



Pieces of Me IV

Anna Simson

Unique

£140

124



Pieces of Me V

Anna Simson

Unique

£180

125



Pieces of Me VI

Anna Simson

Unique

£180

126



Carrots

Bailey Curtis

Similar

£105



The Sculptures - Indoor

127



A Relaxing Dimension!

Bea Green

Similar

£420

128



Considering - the Young
Ornithologist

Bea Green

Unique

£230

129



The fleeting Beauty of
Autumn

Clare Mahoney

Unique

£895

130



Balance 8

Clare Stephens

Unique

£225

131



Essere

Deborah Harrison

Unique

£1,500

132



Unstable Whispers

Diana Zapata Mejia

Unique

£2,500

The Sculptures - Indoor

133



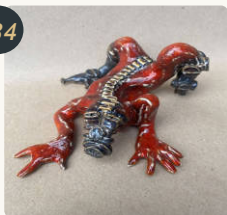
Time Out

Elizabeth Leyland

Edition 18/20

£395

134



Bound By Bolts

Elliot Dylan Quinn

Similar

£275

135



Cognitive Support

Elliot Dylan Quinn

Similar

£395

136



Let's Leave it There

Elliot Dylan Quinn

Similar

£355

137



Field Bindweed Creeping
into the Barley

Gordon Senior

Unique

£650

138



Field Poppies Creeping
into the Winter Wheat

Gordon Senior

Unique

£950



The Sculptures - Indoor

139



Motor Home

Graham Hawkins

Unique

£250

140



Equus II

Helen Greene

Edition 1/9

£2,950

141



Equus

Helen Greene

Edition 1/9

£4,750

142



Portrait of Oliver

Jacqui Sheard

Unique

£600

143



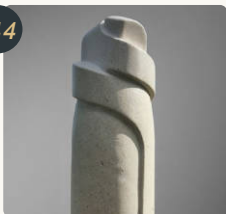
Kilkenny Hug

Jan Bruce

Similar

£1,750

144



Small Hug

Jan Bruce

Similar

£145



The Sculptures - Indoor

145



Together

Jan Bruce

Similar

£550

146



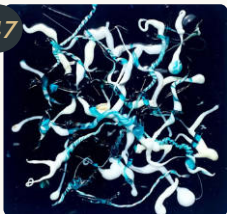
Jelly Legs

Jane Yarnall

Unique

£95

147



Synapses

Jane Yarnall

Unique

£95

148



Mareincognitun Mini
Green

Jenny Baddeley

Similar

NFS

149



Mareincognitun Mini
Platinum

Jenny Baddeley

Similar

£75

150



Red Bird Bath

Jenny Waller

Similar

£65



The Sculptures - Indoor

151



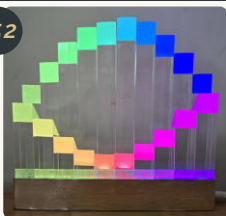
Urn in Winter

Jenny Waller

Unique

£75

152



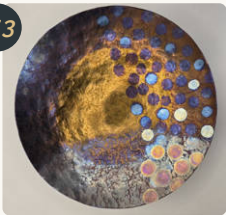
Folded Sine Wave

Jeremy Wyatt

Similar

£375

153



Zen Bowl

Jeremy Wyatt

Similar

£425

154



Animus and Anima

Johannes Steuck

Unique

£4,960

155



Mother and Child

Johannes Steuck

Unique

£4,400

156



Two out of One

Johannes Steuck

Unique

£4,300



The Sculptures - Indoor

157



A Knot of Thoughts

Juli Bharucha

Unique

£550

158



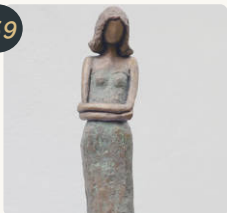
Without Skin

Juli Bharucha

Unique

£550

159



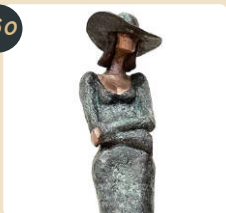
I Love My Girl

Kay Singla

Edition 5/25

£898

160



I Love You Too

Kay Singla

Edition 1/25

£905

161



Dragon

Kiki Black

Unique

£245

162



Village

Kiki Black

Edition 3

£195



The Sculptures - Indoor

163



Barn Owl Relief

Kim Pethybridge

Unique

£285

164



Jazzy

Kim Pethybridge

Unique

£275

165



Greenshield

Lynda Knott

Unique

£550

166



Oakmoss

Lynda Knott

Unique

£550

167



The Peregrine

Lynne Littler

Unique

£1,100

168



The Red One

Lynne Littler

Unique

£2,200



The Sculptures - Indoor

169



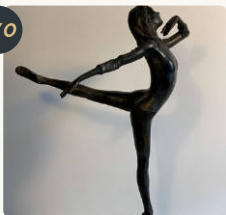
Arc of Electra II

Malcolm West

Edition 2/20

£450

170



Laura's Arabesque

Malcolm West

Edition 4/20

£425

171



Bleached Coral II

Mark Bowman

Unique

£2,240

172



Bleached Coral III

Mark Bowman

Unique

£2,850

173



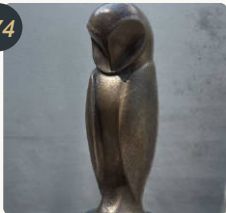
Organic Form III

Mark Bowman

Unique

£2,450

174



Barn Owl

Martin Cash

Edition 25

£900



The Sculptures - Indoor

175



Chasing the Curve

Martin Cash

Edition 25

£900

176



The Moon Gazing Hare

Martin Cash

Edition 25

£1,200

177



Blade 2

Martin Clarke

Unique

£155

178



Hagstone Tripod

Martin Clarke

Unique

£95

179



Slatehead

Martin Clarke

Unique

£65

180



Mrs A Larkley

Martin Elphick

Similar

£1,500



The Sculptures - Indoor

181



The Harbinger

Martin Elphick

Unique

£2,400

182



Jocelyn

Mikhail Mandrigin

Unique

NFS

183



Matsu-Mori

Nobuko Okumura

Unique

£26,000

184



Oceane maybe a
Mermaid

Peter Nava

Unique

£2,500

185



Red Wave

Peter Nava

Unique

£900

186



Siren Silently sitting on
her Rock

Peter Nava

Unique

£1,700



The Sculptures - Indoor

187



Contour of Dreams

Piotr Gargas

Similar

£6,500

188



Elpis

Piotr Gargas

Edition 12

£900

189



Mau

Piotr Gargas

Edition 12

£900

190



Woman with Black Hair

Raymond Wirick

Unique

£600

191



Afterwards

Sally Grant

Edition 3/12

£195

192



Thinking Man

Sally Grant

Edition 9/10

£320



The Sculptures - Indoor

193



Female Hen Harrier

Sarah Davis

Unique

£400

194



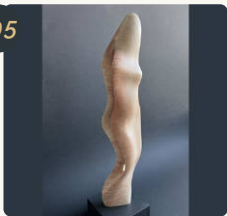
Parrot

Sarah Davis

Similar

£180

195



Veiled Form II

Simon Denman

Similar

£350

196



Veiled Form III

Simon Denman

Similar

£350

197



Horses

Sue Navin

Unique

£800

198



Concha

Terry Merritt

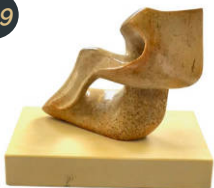
Unique

£625



The Sculptures - Indoor

199



Fortis

Terry Merritt

Unique

£625

200



Savant

Tim Wells

Unique

£1,430

201



Book Girl

Tina Holbrook

Unique

£295

202



Tree Man

Tina Holbrook

Unique

£395

203



Precarious

Tom Watson

Unique

£1,200

204



Rise and Fall

Tom Watson

Unique

£1,200



The Sculptures - Indoor

205



Ram

Young Melmoth

Unique

£930



MISERDEN

DISCOVER, EXPLORE & ENJOY

Garden entry

Please buy your tickets online in advance, at the Little Ginger coffee kiosk, or via QR code at the gate. Adults £12, u16 are free – but please supervise children.

A Friends of Miserden Pass allows you unlimited visits for a whole year: see online for details. Historic Houses membership cards are also accepted.

Important information

Please be aware that some routes in the garden include uneven ground. Please take extra care on the stone steps and paving as they can become slippery when wet.

Children must be accompanied and supervised at all times.

Please note the grounds are not supervised, contact 01285 821303 to report to any incidents or damage to property.

In an emergency please call 999.



Please note that because of the resident dogs, you'll only be able to bring your dogs up to the refreshments area, outside the gate (except service dogs). The toilets are also located here.

History of the estate

In 1086 Miserden was recorded as Greenhampstead in the Domesday Book.

MISERDEN

DISCOVER, EXPLORE & ENJOY

It was the Norman family, Musard, who lived at Miserden until 1297 who ultimately gave the village its current name.

From 1326, the Estate belonged to the Crown and was granted to the Earl of Kent and subsequently the Earl of March (later the Duke of York) in 1411.

The Estate was transferred to Cicily the mother of Edward IV before forming part of the dowery of Catherine Parr when she married Henry VIII until her death in 1548.

In 1620 William Sandys bought the estate and it stayed within the Sandys family until 1832. After

four short ownerships (Reed, Wittis Lyon, Rolt, Leatham) in the 19th Century, the Estate was bought by Captain FNH Wills in 1913 and the Wills family remain custodians to this day.

The bones of the garden are likely to have been laid out in 1620 when the house was built on its current site by William Sandys, certainly the structure of the garden is evident from an engraving by Johannes Kip in 1720.

Gerturde Jekyll never had a direct link to Miserden, but her influence can be felt as the garden developed under the stewardship of Margery Sinclair (the present owners greatgrandmother) and Sir Edwin Lutyens who designed the east wing of the house after a fire in 1918 and stayed at Miserden on many occasions.

The Garden

"The garden has a timeless quality, having changed sensitively over the years. It has the feel of a private garden which happens to be open to the public."

Nicholas Wills.





This lovely, timeless, walled garden overlooks a deer park and the rolling Cotswold hills of the Golden Valley beyond.

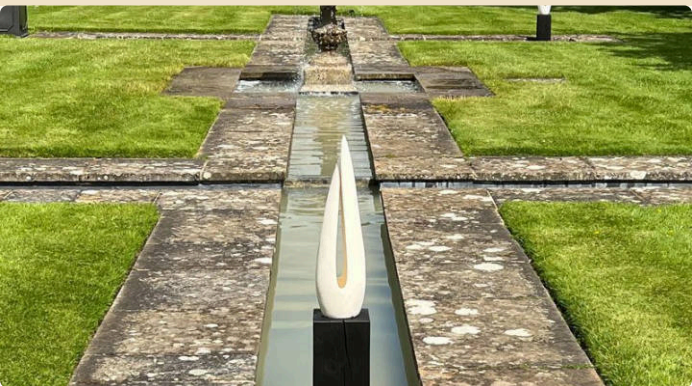
Designed in the 17th century, the Garden still retains a wonderful sense of peace and tranquillity with a topiary yew walk and quaint grass steps designed by the architect Sir Edwin Lutyens around 1919.

The Garden is well known for its magnificent mixed borders, amongst the longest in private ownership. They contain a wonderful wide range of roses, clematis, shrubs and herbaceous plants that provide colour right through from spring to autumn.





Other magical features of the Garden which has spanned generations include a 200 year old sycamore tree that has grown through a Cotswold stone wall, an ancient mulberry tree planted in 1620, a rill with fountain and stone summerhouse and an impressive new spiral of dahlias. The garden and planting are continually evolving and so every year you come back, you're sure to discover new aspects of this beautiful place.





Walks in the area

Although dogs aren't allowed in the garden, there are wonderful designated walks (dogs on lead please due to livestock) through the woods, around farmland and beside the lake. Cyclists are welcome on the public bridleways.

For information: The Estate Office, 01285 821 303
estate.office@miserden.org



How to buy a sculpture

Thank you for supporting our artists by buying a sculpture at Creating Spaces 2026.

Please note all sculptures are to remain in the exhibition until the end of the show.

Just follow these simple steps:

- Firstly choose your sculpture and make a note of the number, title and artist.
- If you are at Miserden just find a CSA steward, either in the garden or the Club Room and give them the details. You will be required to pay a 20% deposit to secure your purchase. After leaving your full contact details (name, address, phone and email) you will be given a receipt. Alternatively email: exhibitions@cotswoldsculptors.org with details of the sculpture you would like to buy.
- The CSA will send you an invoice within 2 weeks and the balance will be payable by the due date on the invoice.
- The artist will then be in contact with you to arrange collection or delivery of your purchase. Please note if the sculpture is to be delivered a charge may apply.

More details here

cotswoldsculptorsassociation.com/how-to-buy

How to buy a sculpture (continued)

Open and Limited Editions:

- Some sculptures are cast or made in open or limited editions, in which case we will take 20% deposit and full payment as above. There may be a waiting time whilst an edition is made and the artist will advise regarding collection or delivery.

Availability Key

 = sold, unique  = sold, more available

Damage:

In the unlikely event of a sculpture being damaged during the exhibition the following options will be offered...

- A full refund.
- If the purchaser still wants the sculpture, the artist will see if repair is possible. If full restoration is achieved the full price remains.
- If there is slight damage then a lower price may be negotiated which both parties find acceptable.

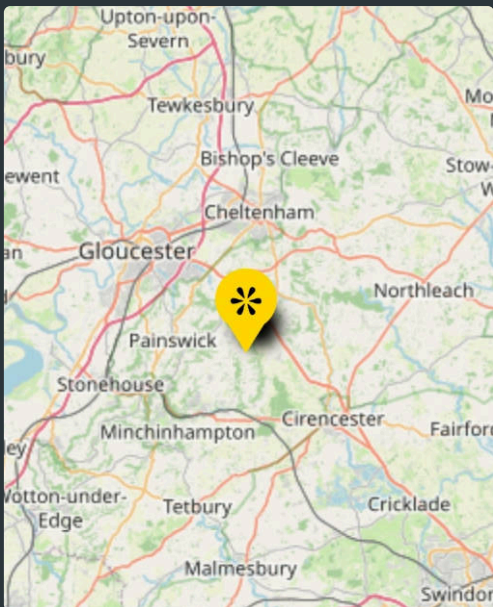
More details here

cotswoldsculptorsassociation.com/how-to-buy



Miserden Location

The Garden at Miserden, Nr Stroud,
Gloucestershire, GL6 7JA



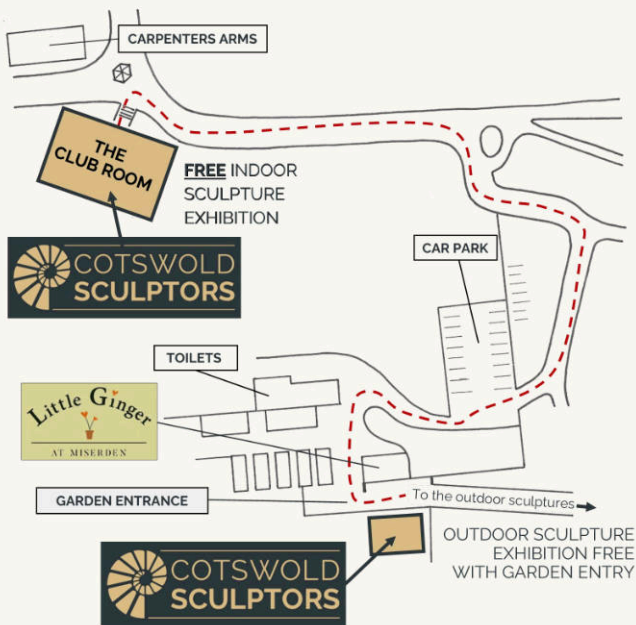
Google Maps

Apple Maps



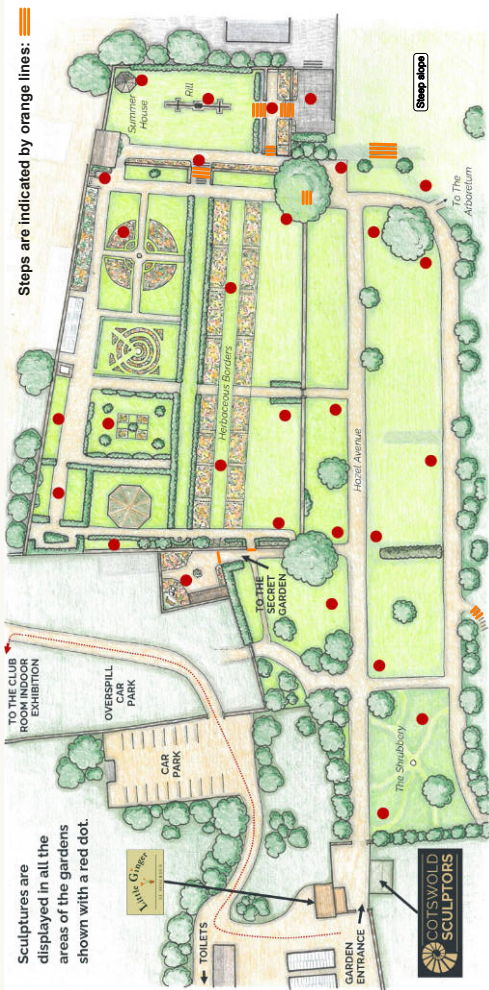
what3words

Venues Location Map





Garden Map





COTSWOLD
SCULPTORS

CREATING SPACES 2026

How to buy a sculpture

If you'd like to buy a sculpture, please ask a CSA steward in the garden or club room. **See p.135 for more details.**

Special Offer

Save 10% on advance bookings with code **CSA26*** at **www.miserden.org** **Please note that the 10 per cent discount is for exhibition dates and standard opening times only, when booking at least one day before visiting for a group of less than 10 people.*

MISERDEN

DISCOVER, EXPLORE & ENJOY

The Garden at Miserden, Nr Stroud,
Gloucestershire, GL6 7JA

[///blossom.scoop.wooden](http://blossom.scoop.wooden)

01285 821 303

www.miserden.org

[email:hello@miserden.org](mailto:hello@miserden.org)

Cover

Website

Contents