

ELEVEN11

2026

UNIFORM



CATALOG

ELEVEN11

OUR MISSION

At Eleven11 Team Sports, we exist to take the complexity out of running a sports club, so coaches and directors can focus on what actually matters: developing athletes. We handle all the back-office admin work, everything from player registration to landing new sponsors. All under one roof, at no extra cost to your club. But uniforms and apparel are where we started, and that's where we really shine. Every uniform we produce is built for the way athletes actually compete. They're built to last and built to perform. We also know that your uniform is your brand. It's your identity. It's the first thing people think of when they talk about your club. It's in all the pictures. It's in all the memories. We treat it that way.



USD MSRP PRICING

TABLE OF CONTENTS

BASEBALL	8	HOCKEY	42
SOFTBALL	13	LACROSSE	46
SOCCER	20	WRESTLING	54
VOLLEYBALL	25	RUGBY	57
BASKETBALL	28	VELOCITY & SIDELINE	60
FOOTBALL	36	BAGS	70

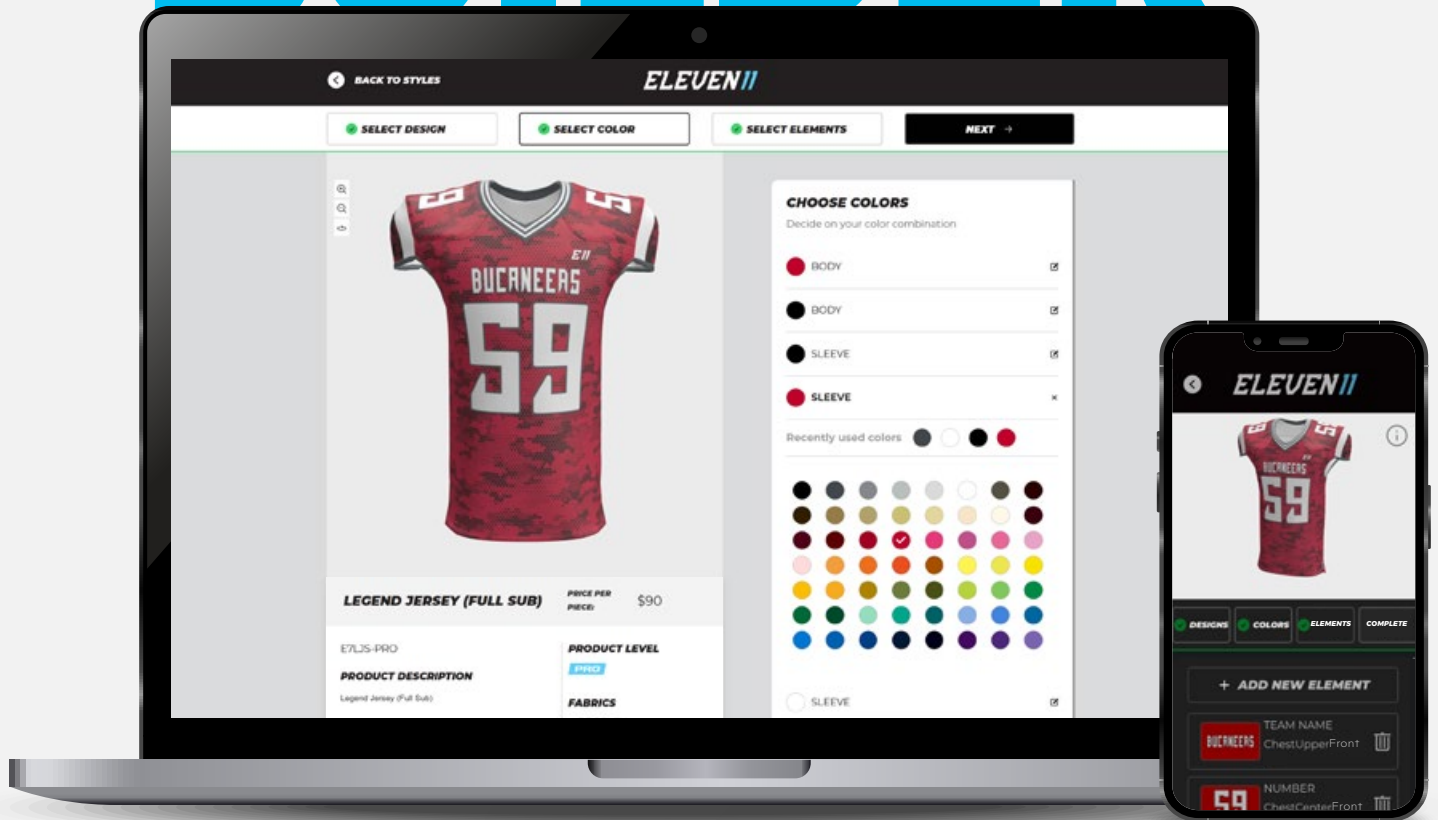
USD MSRP Pricing Throughout Catalog

10 piece minimum / 1 piece fill-in.

15 business days standard production time from approval.

5 & 10 business days rush service available with surcharge.

CUSTOM UNIFORM BUILDER



Simple, guided design tools • Customize every key detail • Design it. Save it. Send it.

MAKE IT YOURS



Scan to QR code or click the link to access our [Custom Uniform Builder](#) and explore all our available designs.

CUSTOM UNIFORM BUILDER

LEGEND JERSEY

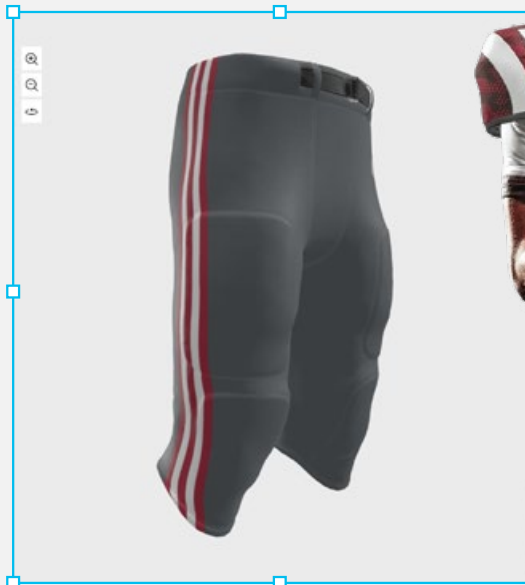
CORE SELECT PRO

ITEM #: E7LJT

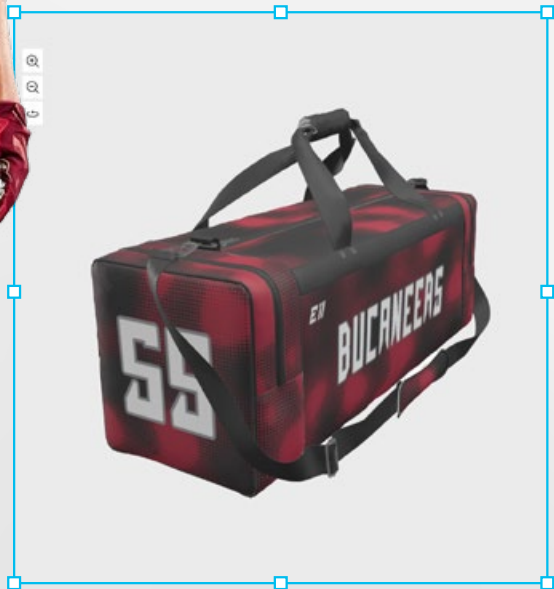


- BODY COLOR
- NECK COLOR
- SLEEVE COLOR

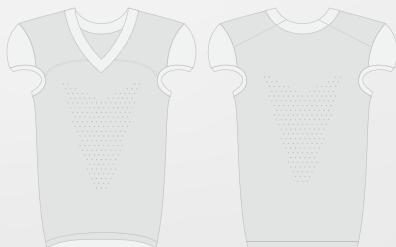
LEGEND JERSEY



LEGEND PANT



CARGO DUFFLE BAG (LARGE)



LASER CUT
VENTILATION



HEAVY
WEIGHT

VELOCITY

5 DAY PROGRAM

MORE THAN JUST THE BASICS. UNIFORMS IN 5 DAYS.



ESSENTIALS. FAST. ON TIME.

CREW & V-NECK • SLEEVELESS, SHORT, AND LONG SLEEVE • 3 FABRIC OPTIONS
MEN'S, WOMEN'S, & YOUTH • SHORTS W/ & W/O POCKETS



SHIPS 5 DAYS
FROM APPROVAL



BUILD
ONLINE



ADD YOUR TEAM
COLORS AND LOGOS

- Full dye cut & sew sublimation
- 10 piece minimum per style
- 100 piece maximum*
- Templated designs only
- No charge for names & numbers

*Delivery time will be quoted at approval for orders over 100 pcs

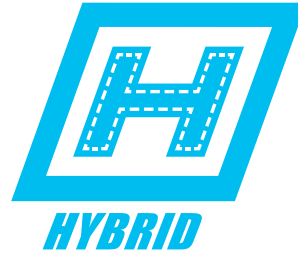
WHAT TO LOOK FOR



Items shipped 5 days after order submittal / approval



Fully reversible items in either 2-ply or 1-ply fabric options



Select items that combine sublimation with twill and/or pre-dyed fabric



Items shipped 10 days after order submittal / approval

PRO

Pro tier is our pinnacle uniform and apparel offering for players wanting the highest level features and performance.

This tier of product provides the most advanced features including upgraded stretch woven fabrics for style and durability, Digiperf laser venting for enhanced breathability, hidden snap buttons, enhanced sewing and finishing techniques and much more. For the individual or team that prefers the very best performance rather than “shoe brand” marketing.

SELECT

Select tier is our premium product offering that includes enhanced fabrics and performance features at competitive prices.

This tier of product offers advanced features such as 4-way stretch fabrics for enhanced comfort and range of motion, stretch mesh for maximum breathability, color matched findings and multi-fabric options for targeted performance gains. For the individual or team that wants quantifiable performance gains over traditional “trade brand” offerings.

CORE

Core tier is our entry level product that still offers premium performance and features at a more affordable price point.

Traditional and time-proven fabrics are chosen for task and sport specific demands and offer excellent durability and comfort. Moisture wicking and anti-microbial fabrics, reinforced sewing techniques and modern and stylish designs are hallmarks of our Core tier. For the individual or team that wants a performance driven and modern solution at an industry leading price value proposition.

ELEVEN *11*

BASEBALL



Scan to QR code or click the link to access our [Custom Uniform Builder](#) and explore all our available designs.



DOUBLE PLAY SHORT SLEEVE FULL BUTTON JERSEY

CORE **SELECT** PRO

ITEM #: E1DPSSF8

\$66

DESCRIPTION

- Select level short sleeve jersey
- Traditional full button profile
- Scoop hemmed bottom
- Great durability and range of motion
- Excellent breathability

SIZING:

Men's: S-5XL
Youth: YXS-YXL

FABRICS:

Flex Aerofiber



DOUBLE PLAY SHORT SLEEVE 2-BUTTON JERSEY

CORE **SELECT** PRO

ITEM #: E1DPSS2B

\$62

DESCRIPTION

- Select level short sleeve jersey
- Traditional 2- button profile
- Scoop hemmed bottom
- Great durability and range of motion
- Excellent breathability

SIZING:

Men's: S-5XL
Youth: YXS-YXL

FABRICS:

Flex Aerofiber



DOUBLE PLAY SLEEVELESS 2-BUTTON JERSEY

CORE **SELECT** PRO

ITEM #: E1DPNS2B

\$59

DESCRIPTION

- Select level short sleeve jersey
- Traditional 2- button profile
- Scoop hemmed bottom
- Great durability and range of motion
- Excellent breathability

SIZING:

Men's: S-5XL
Youth: YXS-YXL

FABRICS:

Flex Aerofiber



VELOCITY

SHORT SLEEVE CREW NECK JERSEY

CORE SELECT PRO

ITEM #: E0VSSCN \$27

DESCRIPTION

- Set-in sleeves
- Drop tail design
- Neck taping
- Self material collar

SIZING:

Adult: S-5XL
Youth: XS-XL

FABRICS:

E-lite



VELOCITY

SHORT SLEEVE V-NECK JERSEY

CORE SELECT PRO

ITEM #: E0VSSVN \$27

DESCRIPTION

- Set-in sleeves
- Drop tail design
- Neck taping
- Self material collar

SIZING:

Adult: S-5XL
Youth: XS-XL

FABRICS:

E-lite



HUSTLE

BASEBALL PANT / KNICKER

CORE **SELECT** PRO

PANT: E1HBP	\$76
KNICKER: E1HBK	\$76

DESCRIPTION

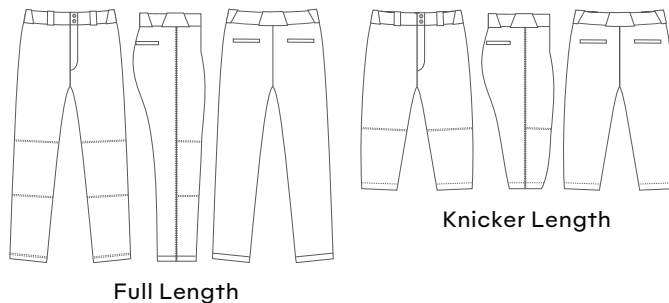
- Select level baseball pant & knicker
- Heavyweight Durafiber fabric
- Reinforced knees
- Silicone anti-slip waistband

SIZING:

Men's: S-3XL
Youth: YXS-YXL

FABRICS:

Durafiber





DUGOUT CAGE JACKET

CORE | SELECT | **PRO**

LONG SLEEVE: E1DLSCJ	\$70
SHORT SLEEVE: E1DSSCJ	\$66

DESCRIPTION

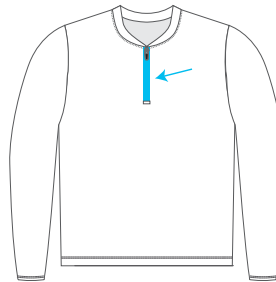
- Pro level cage jacket
- 1/4 Zip design
- Flex woven fabric for full range of motion
- Excellent pick resistance
- 4-inch slits on sides of body

SIZING:

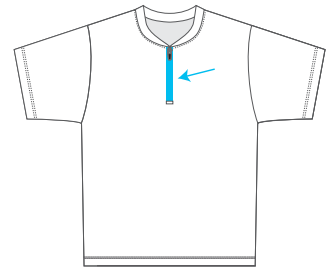
Men's: S-3XL
Youth: YXS-YXL

FABRICS:

Flexweave 1.9



Color-Matched
Zipper



Color-Matched
Zipper



ELEVEN *11*

SOFTBALL



Scan to QR code or click the link to access our [Custom Uniform Builder](#) and explore all our available designs.



SLIDER

SHORT SLEEVE FAUX BUTTON JERSEY

CORE **SELECT** PRO

ITEM #: E2SSSFX

\$63

DESCRIPTION

- Select level premium jersey
- 2 buttons at top with faux front closure
- 4-way stretch fabric
- Excellent durability and range of motion
- Excellent breathability

SIZING:

Adult: S-3XL
Youth: XS-XL

FABRICS:

Flex Aerofiber



SLIDER

SLEEVELESS FAUX BUTTON JERSEY

CORE **SELECT** PRO

ITEM #: E2SNSFX

\$60

DESCRIPTION

- Select level sleeveless jersey
- 2 buttons at top with faux front closure
- Excellent durability and range of motion
- Excellent breathability

SIZING:

Adult: XS-3XL

FABRICS:

Flex Aerofiber



SLIDER SHORT SLEEVE 1-BUTTON JERSEY

CORE **SELECT** PRO

ITEM #: E2SSS1B

\$59

DESCRIPTION

- Select level short sleeve jersey
- Traditional 1-button profile
- Excellent durability and range of motion
- Excellent breathability

SIZING:

Adult: S-3XL
Youth: XS-XL

FABRICS:

Flex Aerofiber



SLIDER SLEEVELESS 1-BUTTON JERSEY

CORE **SELECT** PRO

ITEM #: E2SNS1B

\$56

DESCRIPTION

- Select level short sleeve jersey
- Traditional 1-button profile
- Excellent durability and range of motion
- Excellent breathability

SIZING:

Adult: XS-3XL

FABRICS:

Flex Aerofiber



VELOCITY

WOMEN'S SHORT SLEEVE V NECK

CORE SELECT PRO

CORE: E0WSSVN

\$27

DESCRIPTION

- Short sleeve v-neck design
- Set-in sleeves
- Drop tail design
- Neck taping
- Self material collar

SIZING:

Adult: S-3XL
Youth: XS-XL

FABRICS:

E-lite



VELOCITY

WOMEN'S SLEEVELESS V NECK

CORE SELECT PRO

CORE: E0WNSVN

\$26

DESCRIPTION

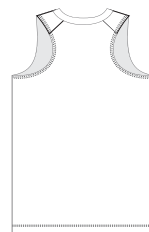
- Sleeveless racerback
- V-neck design
- Neck taping
- Self material collar

SIZING:

Adult: S-3XL
Youth: XS-XL

FABRICS:

E-lite



Racerback Cut



VELOCITY

WOMEN'S SHORT SLEEVE CREW NECK

CORE SELECT PRO

CORE: E0WSSCN

\$27

DESCRIPTION

- Short sleeve crew neck design
- Set-in sleeves
- Drop tail design
- Neck taping
- Self material collar

SIZING:

Adult: S-3XL
Youth: XS-XL

FABRICS:

E-lite



VELOCITY

WOMEN'S SLEEVELESS CREW NECK

CORE SELECT PRO

CORE: E0WN SCN

\$26

DESCRIPTION

- Sleeveless crew neck design
- Set-in sleeves
- Drop tail design
- Neck taping
- Self material collar

SIZING:

Adult: S-3XL
Youth: XS-XL

FABRICS:

E-lite



HUSTLE

SOFTBALL KNICKER

CORE **SELECT** PRO

W / BELT: E2HSK

\$72

DESCRIPTION

- Select level premium knicker pant w/ or w/o belt
- Heavyweight fabric for enhanced durability
- Silicone anti-slip waistband
- 2 back pockets

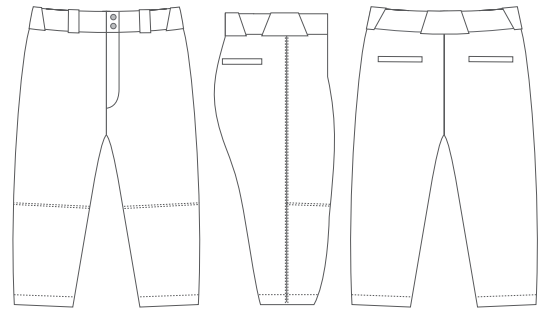
SIZING:

Adult: XS-3XL

Youth: XS-XL

FABRICS:

Durafiber



Knicker Length



DUGOUT CAGE JACKET

CORE / SELECT / **PRO**

LONG SLEEVE: E2DWLSCJ	\$70
SHORT SLEEVE: E2DWSSCJ	\$66

DESCRIPTION

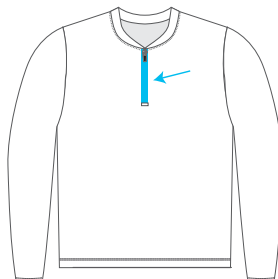
- Pro level cage jacket
- 1/4 Zip design
- Flex woven fabric for full range of motion
- Excellent pick resistance
- 4-inch slits on sides of body

SIZING:

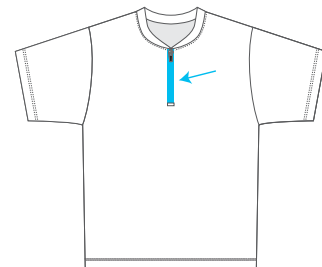
Adult: XS-2XL

FABRICS:

Flexweave 1.9

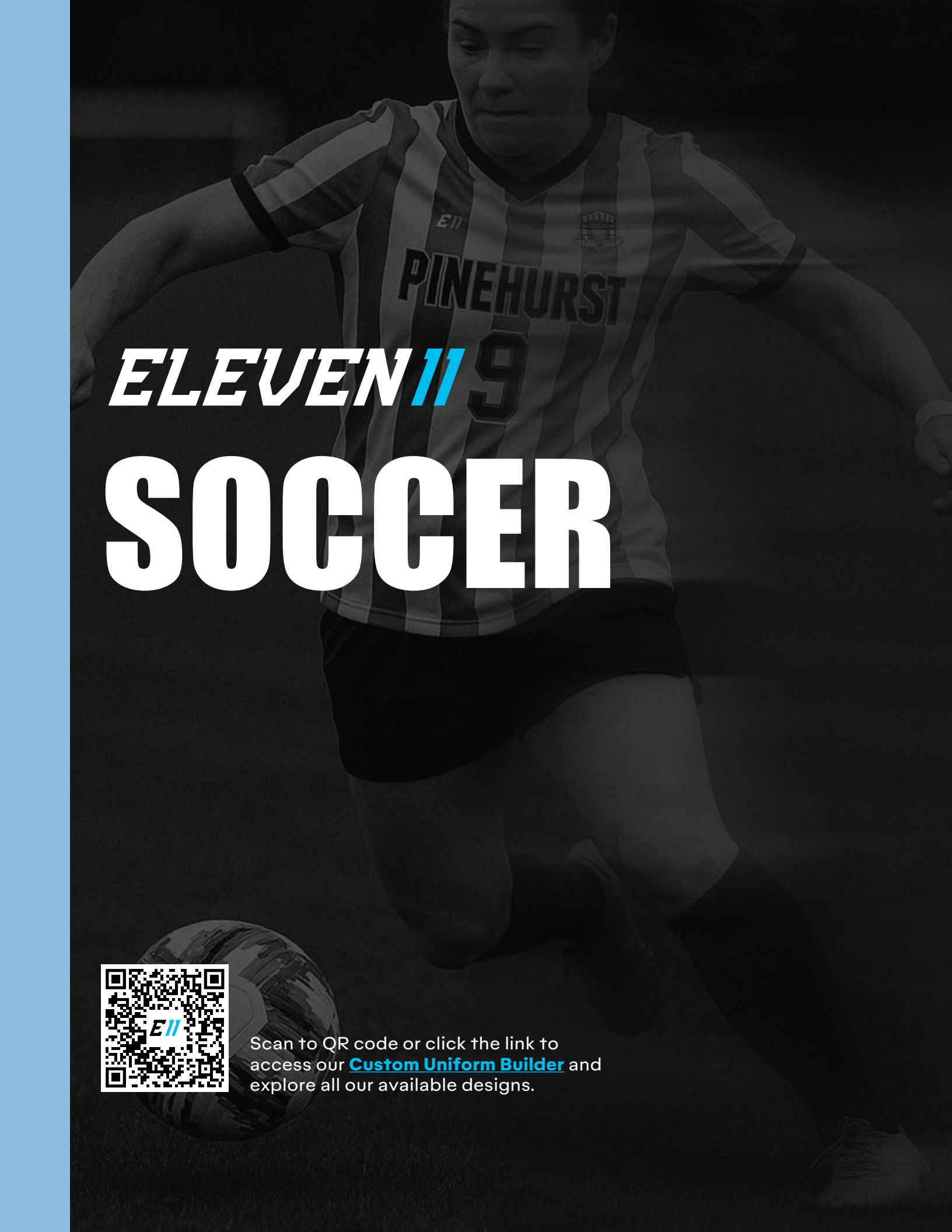


Color-Matched
Zipper



Color-Matched
Zipper





ELEVEN **11** 9
SOCCER



Scan to QR code or click the link to access our [Custom Uniform Builder](#) and explore all our available designs.



ACADEMY CREW NECK

CORE SELECT **PRO**

MEN'S: E3MACN **\$45**
WOMEN'S: E3WACN

DESCRIPTION

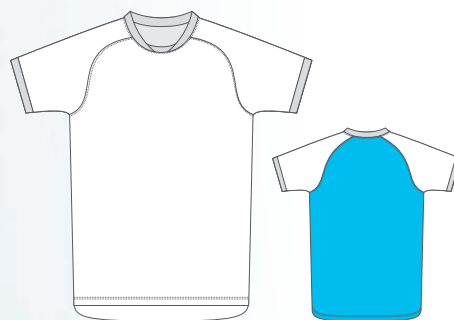
- Pro level short sleeve crew neck jersey
- Lightweight, 4-way stretch
- Ultraflex flat knit front with stretch mesh back for breathability on the field
- Raglan cut for better fit and performance

SIZING:

Men's: XS-5XL
 Women's: YXS-YXL
 Youth: YXS-YXL

FABRICS:

Ultraflex



Ultraflex
 Ultraflex Mesh
 Rib



4-WAY
STRETCH



PREMIUM
KNIT



ACADEMY V NECK

CORE SELECT **PRO**

MEN'S: E3MAVN **\$45**
WOMEN'S: E3WAVN

DESCRIPTION

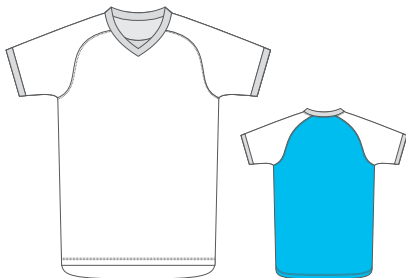
- Pro level short sleeve crew neck jersey
- Lightweight, 4-way stretch
- Ultraflex flat knit front with stretch mesh back for breathability on the field
- Raglan cut for better fit and performance

SIZING:

Men's: XS-5XL
Women's: XS-4XL
Youth: YXS-YXL

FABRICS:

Ultraflex



□ Ultraflex ■ Ultraflex Mesh ▒ Rib



ACADEMY SHORT

CORE SELECT **PRO**

MEN'S 7": E3M7AS **\$38**
WOMEN'S: E3W5AS

DESCRIPTION

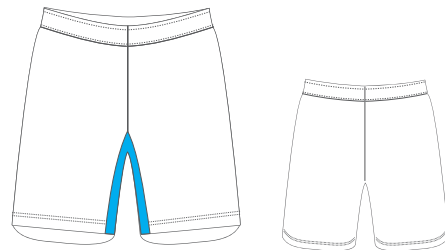
- Pro level short
- Lightweight Ultraflex fabric
- Men's: 5" & 7" inseam, Women's & Youth: 5" inseam
- Inner lace drawstring

SIZING:

Men's: XS-5XL
Women's: XS-4XL
Youth: YS-YXL

FABRICS:

Ultraflex



□ Ultraflex ■ Ultraflex Mesh ▒ Rib





HERITAGE CREW NECK

CORE **SELECT** PRO

MEN'S: E3MHCN
WOMEN'S: E3WHCN

\$39

DESCRIPTION

- Select level short sleeve crew neck jersey
- Lightweight Wiffle Mesh or E-lite fabrics
- Ribbed collar and arm opening

SIZING:

Men's: XS-5XL
Women's: XS-4XL
Youth: YXS-YXL

FABRICS:

Wiffle Mesh



HERITAGE V NECK

CORE **SELECT** PRO

MEN'S: E3MHVN
WOMEN'S: E3WHVN

\$39

DESCRIPTION

- Select level short sleeve v-neck jersey
- Lightweight Wiffle Mesh or E-lite fabrics
- Ribbed collar and arm opening

SIZING:

Men's: XS-5XL
Women's: XS-4XL
Youth: YXS-YXL

FABRICS:

Wiffle Mesh



HERITAGE GOALIE JERSEY

CORE SELECT PRO

MEN'S: E3MHGS
WOMEN'S: E3WHGS

\$45

DESCRIPTION

- Core level long sleeve v-neck jersey
- Lightweight E-lite fabric
- Ribbed collar and sleeve cuffs for enhanced comfort

SIZING:

Men's: XS-5XL
Women's: XS-4XL
Youth: YXS-YXL

FABRICS:

E-lite



Reinforced Padded Elbows

HERITAGE SHORT

CORE **SELECT** PRO

MEN'S 7": E3M7HS
WOMEN'S 5": E3W5HS

\$39

DESCRIPTION

- Select level short
- Lightweight Wiffle Mesh fabrics
- Men's 7" inseams & Women's 5" inseams

SIZING:

Men's: S-3XL
Women's: YS-YXL
Youth: XS-4XL

FABRICS:

Wiffle Mesh



ELEVEN **11**

VOLLEYBALL



Scan to QR code or click the link to access our [Custom Uniform Builder](#) and explore all our available designs.



HALO

LONG SLEEVE JERSEY

CORE SELECT **PRO**

ITEM #: E4HLS

\$56

DESCRIPTION

- Pro-level long sleeve jersey
- Flex Dry spandex fabric front
- Flex Aerofiber spandex mesh back for enhanced ventilation
- Excellent range of motion & pick resistance
- Raglan cut for better fit and performance

SIZING:

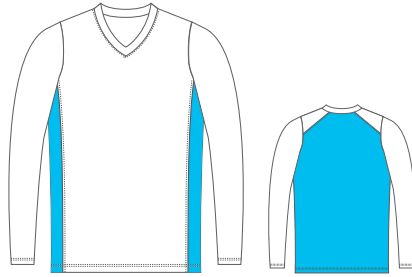
Women's: XS-3XL

Girl's: GS-GXL

FABRICS:

Flex Dry

Flex Aerofiber



□ Flex Dry ■ Flex Aerofiber



4-WAY
STRETCH



PREMIUM
KNIT





HALO SHORT SLEEVE JERSEY

CORE SELECT **PRO**

ITEM #: E4HSS

\$52

DESCRIPTION

- Pro-level long sleeve jersey
- Flex Dry spandex fabric front
- Flex Aerofiber spandex mesh back for enhanced ventilation
- Excellent range of motion
- Raglan cut for better fit

SIZING:

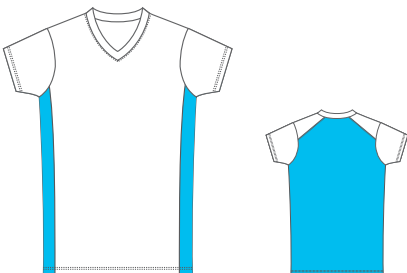
Women's: XS-3XL

Girl's: GS-GXL

FABRICS:

Flex Dry

Flex Aerofiber



□ Flex Dry ■ Flex Aerofiber



HALO SLEEVELESS JERSEY

CORE SELECT **PRO**

ITEM #: E4NS

\$48

DESCRIPTION

- Pro-level long sleeveless jersey
- Flex Dry spandex fabric front
- Flex Aerofiber spandex mesh back for enhanced ventilation
- Excellent range of motion
- Raglan cut for better fit

SIZING:

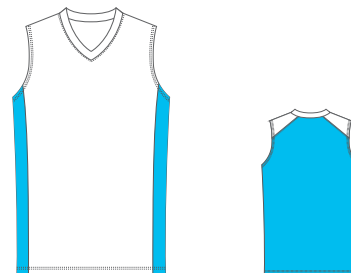
Women's: XS-3XL

Girl's: GS-GXL

FABRICS:

Flex Dry

Flex Aerofiber



□ Flex Dry ■ Flex Aerofiber

ELEVEN **11**

BASKETBALL



Scan to QR code or click the link to access our [Custom Uniform Builder](#) and explore all our available designs.



MVP JERSEY

CORE SELECT **PRO**

MEN'S: E5MMVPJ

\$72

WOMEN'S: E5WMVPJ

DESCRIPTION

- Pro level jersey
- Digiperf laser ventilation
- Multi-panel construction with modern collar
- Flexweave 1.4 woven front for style & durability
- Flex Aerofiber mesh back for breathability
- Ribbed arm openings for enhanced comfort

SIZING:

Men's: S-5XL

Women's: YS-YXL

Youth: XS-3XL

FABRICS:

Flexweave 1.4

Flex Aerofiber

Rib



□ Flexweave 1.4

■ Flex Aerofiber

▨ Digiperf



PREMIUM
WOVEN



LASER CUT
VENTILATION



4-WAY
STRETCH





MVP SHORT

CORE SELECT **PRO**

MEN'S 7": E5MMVPS7 **\$60**

WOMEN'S 5": E5WMVPS5

DESCRIPTION

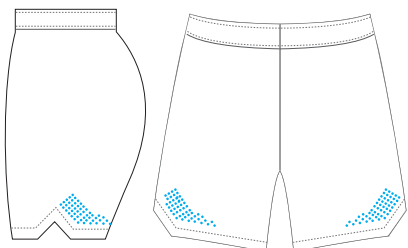
- Pro level shorts
- Digiperf laser ventilation
- Men's Inseam 7" & Women's Inseam 5"
- Flexweave 1.4 woven for style/durability
- Dynamic jacquard waistband w/ lace drawstring
- Waistband plate for additional customization

SIZING:

Men's: S-5XL
 Women's: YS-YXL
 Youth: XS-3XL

FABRICS:

Flexweave 1.4



Flexweave 1.4 Digiperf



BOUNCE V-NECK JERSEY

CORE **SELECT** PRO

MEN'S: E5MBVN **\$50**

WOMEN'S: E5WBVN

DESCRIPTION

- Select jersey with traditional v-neck collar
- Pinhole Mesh fabric for excellent breathability
- Ribbed collar and arm openings
- Excellent durability and range of motion

SIZING:

Men's: S-5XL
 Women's: XS-3XL
 Youth: YS-YXL

FABRICS:

Pinhole Mesh
 Rib



BOUNCE CREW NECK JERSEY

CORE **SELECT** PRO

MEN'S: E5MBCN

\$50

WOMEN'S: E5WBCN

DESCRIPTION

- Select jersey with traditional crew neck collar
- Pinhole Mesh fabric for excellent breathability
- Ribbed collar and arm openings
- Excellent durability and range of motion

SIZING:

Men's: S-5XL

Women's: XS-3XL

Youth: YS-YXL

FABRICS:

Pinhole Mesh

Rib



BOUNCE SHORTS

CORE **SELECT** PRO

MEN'S 7": E5MB7S

\$45

WOMEN'S 5": E5WB5S

DESCRIPTION

- Select level premium shorts
- Men's inseam 7" & Women's inseam 5"
- Dynamic jacquard waistband with lace drawstring
- Waistband plate for additional customization

SIZING:

Men's: S-5XL

Women's: XS-3XL

Youth: YS-YXL

FABRICS:

Pinhole Mesh



LAYUP CREW NECK JERSEY



CORE SELECT PRO

MEN'S: E5MLUCN

\$46

WOMEN'S: E5WLUCN

DESCRIPTION

- Core jersey with 2 panel construction
- Lightweight interlock for comfort & performance
- Overlock stitching with double stitched hems
- Sublimated ribbed collar and armholes

SIZING:

Men's: S-5XL

Women's: XS-3XL

Youth: YS-YXL

FABRICS:

E-lite / Rib



LAYUP V-NECK JERSEY



CORE SELECT PRO

MEN'S: E5MLUVN

\$46

WOMEN'S: E5WLUVN

DESCRIPTION

- Core jersey with 2 panel construction
- Lightweight interlock for comfort & performance
- Overlock stitching with double stitched hems
- Sublimated ribbed collar and armholes

SIZING:

Men's: S-5XL

Women's: XS-3XL

Youth: YS-YXL

FABRICS:

E-lite / Rib



SWITCH REVERSIBLE SINGLE PLY REVERSIBLE JERSEY

CORE **SELECT** PRO

MEN'S: E5MSSPRJ \$55

WOMEN'S: E5WSSPRJ

DESCRIPTION

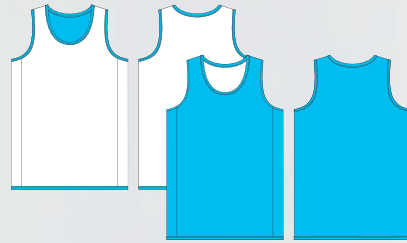
- Select level reversible jersey
- Single ply for lightweight and breathability
- Cover hemmed armholes and neck
- Fell seam stitching

SIZING:

Men's: S-5XL
Women's: XS-3XL
Youth: YXS-YXL

FABRICS:

Dualwick



Side A Side B

SWITCH REVERSIBLE SINGLE PLY REVERSIBLE SHORTS

CORE **SELECT** PRO

MEN'S 7": E5MS7SPRS \$55

WOMEN'S 5": E5WS5SPRS

DESCRIPTION

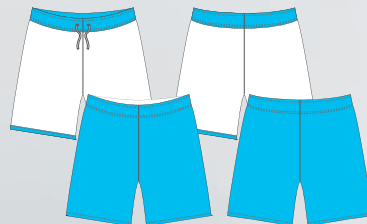
- Select level reversible jersey
- Men's 7" & Women's 5" inseam
- Inner lace drawstring
- Fell seam stitching

SIZING:

Men's: S-5XL
Women's: XS-3XL
Youth: YXS-YXL

FABRICS:

Dualwick



Side A Side B



Fabric Detail



Fell Seam Stitching



PICK  
REVERSIBLE JERSEY

CORE SELECT PRO

MEN'S: E5MPRJ **\$50**
WOMEN'S: E5WPRJ

DESCRIPTION

- Core level reversible jersey
- No grain through – any design/color on both sides with no ghosting
- Lightweight interlock for comfort & performance
- Overlock stitching

SIZING: Men's: S-5XL
 Women's: XS-3XL
 Youth: YXS-YXL

FABRICS: E-lite

PICK  
REVERSIBLE SHORT

CORE SELECT PRO

MEN'S 7": E5MP7RS **\$50**
WOMEN'S 5": E5WP5RS

DESCRIPTION

- Core level reversible short
- No grain through – any design/color on both sides with no ghosting
- Men's 7" & Women's 5" inseam
- Overlock stitching

SIZING: Men's: S-5XL
 Women's: XS-3XL
 Youth: YS-YXL

FABRICS: E-lite



FAST BREAK TEAR AWAY PANTS

CORE SELECT PRO

ITEM #: E5FBTAWP

\$80

DESCRIPTION

- Traditional Core level tear away pant
- Dyna Dry fabric body
- Dazzle reinforcing side strip insert
- Full snap release sides
- Reinforced stitching throughout

SIZING:

Men's: S-4XL
Youth: YS-YL

FABRICS:

Dyna Dry
Dazzle



ELEVEN *11*

FOOTBALL



Scan to QR code or click the link to access our [Custom Uniform Builder](#) and explore all our available designs.



LEGEND (Twill) JERSEY



CORE SELECT **PRO**

ITEM #: E7LJT

\$110

DESCRIPTION

- Pro level jersey with tapered fit
- All-over sublimated jersey
- Heavyweight Proflex spandex fabric
- Cap sleeves and cinch bottom
- Digiperf laser ventilation
- Multi-panel construction and triple stitched seams
- Double layer reinforced shoulders & reinforced taping in key areas (including collar)
- Custom sublimated twill numbers* & home plate
- Embroidered front team name* (1-color only)

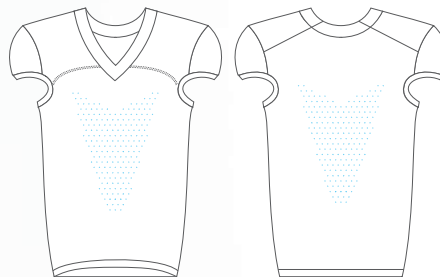
SIZING:

Men's: S-5XL
Youth: YS-Y2XL

FABRICS:

Proflex

* One font available for numbers / team names



Proflex
 Digiperf



LASER CUT VENTILATION



HEAVY WEIGHT



LEGEND (FULL SUB.) JERSEY

CORE SELECT **PRO**

ITEM #: E7LJS

\$90

DESCRIPTION

- Pro/Elite level jersey with tapered fit
- Heavyweight Proflex spandex fabric
- Cap sleeves and cinch bottom
- Digiperf laser ventilation
- Multi-panel construction & triple stitched seams
- Double layer reinforced shoulders
- Reinforced taping in key areas (including collar)

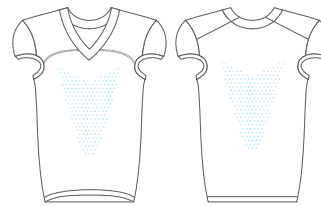
SIZING:

Men's: S-5XL

Youth: YS-Y2XL

FABRICS:

Proflex



LASER CUT
VENTILATION



HEAVY
WEIGHT

Proflex

Digiperf

LEGEND PANTS

CORE SELECT **PRO**

ITEM #: E7LP

\$82

DESCRIPTION

- Pro level no-fly pant
- Heavyweight Proflex spandex fabric
- Digiperf laser ventilation on back of leg
- Slotted silicone anti-slip waistband
- Integrated belt
- Built-in thigh and knee pad pockets

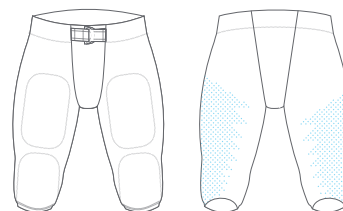
SIZING:

Men's: S-5XL

Youth: YS-YXL

FABRICS:

Proflex



Proflex

Digiperf





VARSITY (TWILL) JERSEY



CORE SELECT **PRO**

ITEM #: E7VJT

\$92

DESCRIPTION

- Pro level jersey with tapered fit
- Pre-dyed body & sublimated sleeves
- Digiperf laser ventilation
- Sublimated twill numbers front and back*
- Sublimated home plate at bottom of collar
- Embroidered team name* (1-color only)
- Same sewing features as Blitz jersey

SIZING:

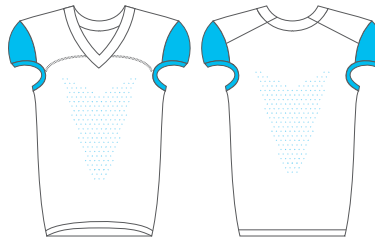
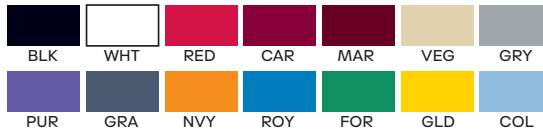
Men's: S-5XL
Youth: YS-Y2XL

FABRICS:

Proflex

* One font available for numbers / team names

Available Base Colors



Pre-dye Proflex

Sublimated Proflex

Digiperf

ALL HYBRID FOOTBALL JERSEYS INCLUDE



Fully customizable sleeve inserts



Full color sublimated tacklet twill numbers



Twill home plate & embroidered team name



VARSITY PANT



CORE SELECT **PRO**

ITEM #: E7VP

\$70

DESCRIPTION

- Pro level no-fly pant
- Heavyweight Proflex spandex fabric
- Slotted silicone anti-slip waistband
- Integrated belt
- Built-in thigh and knee pad pockets

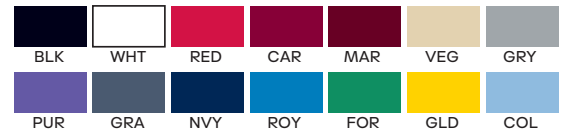
SIZING:

Adult: Men's: S-5XL
Youth: YS-YXL

FABRICS:

Proflex
Proflex Mesh

Available Base Colors



FLEX REVERSIBLE JERSEY



CORE SELECT **PRO**

ITEM #: E7FRJ

\$94

DESCRIPTION

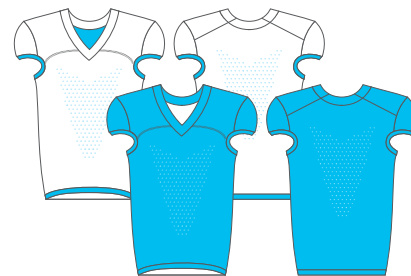
- Pro/Elite level single ply reversible jersey
- Heavyweight Proflex spandex fabric
- Digiperf laser ventilation
- Multi-panel construction & triple stitched seams
- Reinforced taping in key areas (including collar)

SIZING:

Men's: S-5XL
Youth: YS-Y2XL

FABRICS:

Proflex



Side A

Side B



HUDDLE JERSEY



CORE SELECT PRO

ITEM #: E7HJPK

\$52

DESCRIPTION

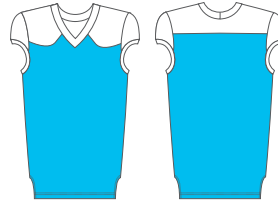
- Core level jersey
- 8 panel construction & triple stitched seams
- Double layer reinforced shoulders
- Heavyweight Proflex spandex and mesh fabric for comfort and performance
- Same sewing features as Blitz jersey

SIZING:

Men's: S-5XL
Youth: YS-Y2XL

FABRICS:

Proflex
Proflex Mesh



- Proflex
- Proflex Mesh



HUDDLE PANT



CORE **SELECT** PRO

ITEM #: E7HPIPK

\$58

DESCRIPTION

- Select level pant
- Heavyweight spandex fabric for comfort and durability
- Slotted silicone anti-slip waistband
- Integrated belt, no-fly design
- Includes, hip, thigh and knee pads.

SIZING:

Men's: S-5XL
Youth: YXS-YXL

FABRICS:

Proflex

ELEVEN *///*

HOCKEY



Scan to QR code or click the link to access our [Custom Uniform Builder](#) and explore all our available designs.



CELLY

JERSEY W/ LACE NECK

CORE **SELECT** PRO

ITEM #: E6CJL

\$82

DESCRIPTION

- Modern pro-style jersey with lace neck
- Unique, multi-layer collar with insert
- Double shoulders and elbows
- Reinforced stitching

SIZING:

Men's: S-3XL
Youth: YXS-YXL
Goalie: YGC-AGC

FABRICS:

Airmesh
Flexweave 1.9



CELLY

JERSEY - NO LACES

CORE **SELECT** PRO

ITEM #: E6CJNL

\$78

DESCRIPTION

- Modern pro-style jersey
- Unique, multi-layer collar with insert
- Double shoulders and elbows
- Reinforced stitching

SIZING:

Men's: S-3XL
Youth: YXS-YXL
Goalie: YGC-AGC

FABRICS:

Airmesh
Flexweave 1.9





SNIPE

JERSEY W/ LACE NECK

CORE **SELECT** PRO

ITEM #: E6SJL

\$78

DESCRIPTION

- Select level lace neck hockey jersey
- 5 panel construction
- Double shoulders and elbows
- Reinforced double stitching
- Classic yoke

SIZING:

Men's: S-3XL
 Youth: YXS-YXL
 Goalie: YGC-AGC

FABRICS:

Airmesh



SNIPE

JERSEY - NO LACES

CORE **SELECT** PRO

ITEM #: E6SJNL

\$74

DESCRIPTION

- Select level lace neck hockey jersey
- 5 panel construction
- Double shoulders and elbows
- Reinforced double stitching
- Classic yoke

SIZING:

Men's: S-3XL
 Youth: YXS-YXL
 Goalie: YGC-AGC

FABRICS:

Airmesh



CHIRP

REVERSIBLE JERSEY



CORE **SELECT** PRO

ITEM #: E6CRJ

\$90

DESCRIPTION

- Single ply for lightweight and breathability
- Fell seam stitching for clean finish

SIZING:

Men's: S/M, L/XL, 2XL
 Youth: YS/YM, YL/YXL
 Goalie: YGC-AGC

FABRICS:

Dualwick



HOMER PANT SHELL

CORE **SELECT** PRO

ITEM #: E6HP

\$54

DESCRIPTION

- Fully custom sublimated shell completes uniform look
- Medium weight stretch woven fabric
- Belt closure
- Shell only – no pads/pants included

SIZING:

Men's: S-XL
Youth: YS-YXL

FABRICS:

Calico 2.2
Proflex



HOMER HOCKEY SOCKS

CORE **SELECT** PRO

ITEM #: E6HS

\$42

DESCRIPTION

- Core level hockey sock
- Double layer reinforced knee
- Velcro strips
- Double stitching throughout

SIZING:

Men's: S/M, L/XL, 2XL
Youth: YS/YM, YL/YXL

FABRICS:

Airmesh



CHIRP REVERSIBLE HOCKEY SOCKS

CORE **SELECT** PRO

ITEM #: E6CRS

\$55

DESCRIPTION

- Single ply for lightweight and breathability
- Velcro strips
- Fell seam stitching for clean finish

SIZING:

Men's: S/M, L/XL, 2XL
Youth: YS/YM, YL/YXL

FABRICS:

Dualwick

ELEVEN **11**

LACROSSE & FIELD HOCKEY



Scan to QR code or click the link to access our [Custom Uniform Builder](#) and explore all our available designs.

CUT SHORT SLEEVE JERSEY

CORE | SELECT | **PRO**

ITEM #: E8CSSJ

\$74

DESCRIPTION

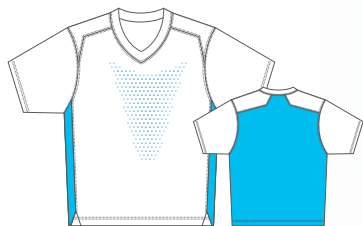
- Pro level short sleeve jersey
- Flexweave woven fabric front with Digiperf laser perforations for enhanced ventilation
- Flex Aerofiber mesh back for breathability
- Features a sleek collar design, entire jersey top-stitched for durability & appearance

SIZING:

Men's: XS-5XL

FABRICS:

Flexweave 1.4
Flex Aerofiber



LASER CUT VENTILATION



PREMIUM WOVEN



4-WAY STRETCH

Flexweave 1.4

Flex Aerofiber

Digiperf



See shorts
in next page





CUT

SLEEVELESS VEST

CORE SELECT **PRO**

ITEM #: E8CNSJ

\$70

DESCRIPTION

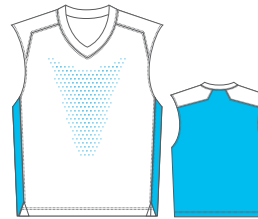
- Pro level sleeveless jersey
- Flexweave woven fabric front with Digiperf laser perforations for enhanced ventilation
- Flex Aerofiber mesh back for breathability
- Features a sleek collar design, entire jersey top-stitched for durability & appearance

SIZING:

Men's: S-5XL
Youth: YXS-YXL

FABRICS:

Flexweave 1.4
Flex Aerofiber



LASER CUT
VENTILATION



4-WAY
STRETCH

□ Flexweave 1.4 ■ Flex Aerofiber □ Digiperf

CUT

SHORTS - NO POCKETS

CORE SELECT **PRO**

ITEM #: E8CS

\$58

DESCRIPTION

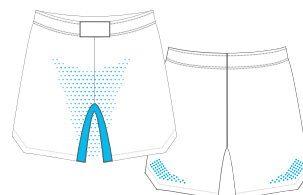
- Pro level, 7" inseam shorts
- Flexweave woven fabric front with Digiperf laser perforations for enhanced ventilation
- Flex Aerofiber mesh inner thigh for breathability
- Waistband plate for additional customization
- Inner lace draw cord

SIZING:

Men's: S-5XL
Youth: YXS-YXL

FABRICS:

Flexweave 1.4
Flex Aerofiber



LASER CUT
VENTILATION



4-WAY
STRETCH

□ Flexweave 1.4 ■ Flex Aerofiber □ Digiperf





SCOOP SHORT SLEEVE JERSEY

CORE **SELECT** PRO

ITEM #: E8SSSJ

\$66

DESCRIPTION

- Select level jersey
- Main body built with Flex Aerofiber
- Flex Durafiber collar
- Moisture wicking, anti-microbial, excellent UPF

SIZING:

Men's: S-5XL
Youth: YXS-YXL

FABRICS:

Flex Aerofiber
Flex Durafiber



SCOOP SLEEVELESS VEST

CORE **SELECT** PRO

ITEM #: E8SNSJ

\$60

DESCRIPTION

- Select level sleeveless vest
- Main body built with Flex Aerofiber
- Flex Durafiber collar
- Moisture wicking, anti-microbial, excellent UPF

SIZING:

Men's: S-5XL
Youth: YXS-YXL

FABRICS:

Flex Aerofiber
Flex Durafiber



SCOOP SHORTS - NO POCKETS

CORE **SELECT** PRO

ITEM #: E8SSNP7

\$48

DESCRIPTION

- Select level, 7" inseam shorts
- Inner lace drawcord
- Waistband plate for additional customization

SIZING:

Men's: XS-5XL
Youth: YXS-YXL

FABRICS:

Flex Aerofiber



SCOOP

SHORTS - WITH POCKETS

CORE **SELECT** PRO

ITEM #: E8SSWP7

\$54

DESCRIPTION

- Select level, 7" inseam shorts
- Same construction as shorts without pockets
- Flex Aerofiber fabric

SIZING:

Men's: XS-5XL
Youth: YXS-YXL

FABRICS:

Flex Aerofiber

ATTACK

SHORT SLEEVE JERSEY



CORE **SELECT** PRO

ITEM #: E8ASSJ

\$52

DESCRIPTION

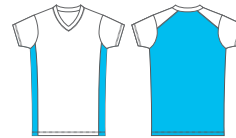
- Select level short sleeve jersey
- Flex dry knitted spandex front and Flex Aerofiber mesh back panel
- Modified v-neck with raglan shoulder

SIZING:

Women's: XS-3XL
Girl's: GXS-GXL

FABRICS:

Flex Dry
Flex Aerofiber



■ Flex Aerofiber
□ Flexdry

ATTACK

SLEEVELESS JERSEY



CORE **SELECT** PRO

ITEM #: E8ANSJ

\$48

DESCRIPTION

- Select level sleeveless jersey
- A Flex dry knitted spandex front and Flex Aerofiber mesh back panel, offer both flexibility and durability
- Modified v-neck with raglan shoulder

SIZING:

Women's: XS-3XL
Girl's: GXS-GXL

FABRICS:

Flex Dry
Flex Aerofiber



■ Flex Aerofiber
□ Flexdry



ATTACK

SLEEVELESS RACERBACK JERSEY

CORE **SELECT** PRO

ITEM #: E8ARBJ

\$48

DESCRIPTION

- Select level sleeveless racerback jersey
- Flex dry knitted spandex front and Flex Aerofiber mesh back panel
- Modified v-neck

SIZING:

Women's: XS-3XL
Girl's: GXS-GXL

FABRICS:

Flex Dry
Flex Aerofiber



 Flex Aerofiber

 Flexdry

ATTACK

SKIRT/SKORT

CORE **SELECT** PRO

SKIRT: E8ASKI

\$44

SKORT: E8ASKO

\$52

DESCRIPTION

- Crafted from a high-quality medium weight Flexdry spandex
- Elastic waistband ensures a secure and comfortable fit

SIZING:

Women's: XS-3XL
Girl's: GXS-GXL

FABRICS:

Flex Dry



ATTACK

SHORTS

CORE **SELECT** PRO

ITEM #: E8AS5

\$48

DESCRIPTION

- Select level, 5" inseam short
- Waistband plate for additional customization
- Flex dry knitted spandex

SIZING:

Women's: XS-3XL
Girl's: GXS-GXL

FABRICS:

Flex Dry



CLAMP

REVERSIBLE

SINGLE PLY REVERSIBLE VEST

CORE **SELECT** PRO

MEN'S: E8CMSPRJ

\$55

WOMEN'S: E8CWSPRJ

DESCRIPTION

- Select level reversible vest
- Lightweight 1-ply reversible material for breathability

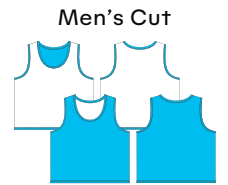
SIZING:

Men's: 2XS/XS, S/M, L/XL, 2/3XL

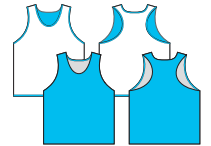
Women's: 2XS/XS, S/M, L/XL, 2/3XL

FABRICS:

Dualwick



Women's Cut



Side A Side B

CLAMP

REVERSIBLE

SINGLE PLY REVERSIBLE SHORTS

CORE **SELECT** PRO

MEN'S 7": E8CMSPRS7

\$55

WOMEN'S 5": E8CWSPRS5

DESCRIPTION

- Select level reversible vest
- Lightweight 1-ply reversible material for breathability

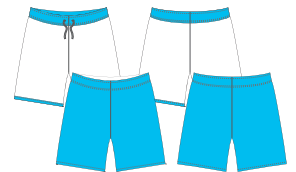
SIZING:

Men's: 2XS/XS, S/M, L/XL, 2/3XL

Women's: 2XS/XS, S/M, L/XL, 2/3XL

FABRICS:

Dualwick



Side A Side B

CLAMP

REVERSIBLE

SINGLE PLY SKIRT

CORE **SELECT** PRO

ITEM #: E8CSKI

\$55

DESCRIPTION

- Select level reversible skirt
- Lightweight 1-ply reversible material for breathability
- Constructed from Dualwick

SIZING:

Women's: XS-3XL

FABRICS:

Dualwick



CREASE



2-PLY REVERSIBLE JERSEY

CORE SELECT PRO

MEN'S#: E8CM2PRJ **\$50**

WOMEN'S #: E8CW2PRJ

DESCRIPTION

- Core level reversible vest (women's is racerback cut)
- 2-ply reversible with seam sealed technology
- Constructed from high-quality Dyna Dry a traditional mock mesh fabric

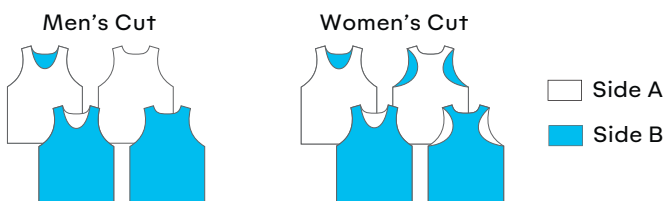
SIZING:

Men's: 2XS/XS , S/M , L/XL , 2/3XL

Women's: 2XS/XS , S/M , L/XL , 2/3XL

FABRICS:

E-lite



RIP

BOX LACROSSE JERSEY

CORE SELECT PRO

ITEM #: E8RBLJ **\$64**

DESCRIPTION

- Core level box lacrosse jersey
- 5 panel construction
- Double shoulders and elbows
- Reinforced double stitching throughout
- Classic yoke styling

SIZING:

Men's: S-5XL

Youth: YS-YXL

Goalie: GL-G5XL

FABRICS:

Airmesh

ELEVEN *11*

WRESTLING



Scan to QR code or click the link to access our [Custom Uniform Builder](#) and explore all our available designs.



FREESTYLE SINGLET

CORE **SELECT** PRO

WITHOUT SILICONE LEG BAND: E9FWS **\$59**
WITH SILICONE LEG BAND: E9FWSLB **\$63**

DESCRIPTION

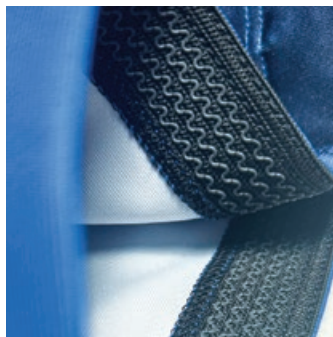
- Heavyweight spandex fabric for performance and durability
- 2 panel construction
- Double overlock stitching
- Binding trim on arm and neck openings

SIZING:

Men's: S-4XL
 Youth: YXS-YXL
 Women's: XS-5XL

FABRICS:

Flex Stretch



Silicone Leg Band Detail



ADVANTAGE SLEEVELESS COMPRESSION JERSEY

CORE **SELECT** PRO

ITEM #: E9ANSCS **\$44**

DESCRIPTION

- Select level sleeveless jersey
- Extended length tail (back)
- Flex Compression 2.2 spandex fabric
- Reinforced seams
- Excellent range of motion and moisture management

SIZING:

Men's: XS-5XL
 Youth: YXS-YXL

FABRICS:

Flex Compression 2.2



ADVANTAGE SHORT SLEEVE COMPRESSION JERSEY

CORE **SELECT** PRO

ITEM #: E9ASSCS

\$48

DESCRIPTION

- Select level compression short sleeve raglan crew neck shirt
- Extended length tail (back)
- 4 panel construction
- Flex Compression 2.2 spandex fabric
- Reinforced seams
- Excellent range of motion and moisture management

SIZING:

Men's: XS-5XL

Youth: YXS-YXL

Women's: 2XS-3XL

FABRICS:

Flex Compression 2.2

ADVANTAGE SHORT

CORE **SELECT** PRO

ITEM #: E9AWS

\$54

DESCRIPTION

- Select level premium MMA short
- Flexweave 1.9 spandex woven fabric for comfort and durability
- Reinforced flat lock stitching strengthens stress points
- Waistband plate for additional customization
- Men's 9" inseam / Youth 7" inseam

SIZING:

Men's: S-3XL

Youth: Y2XS-YXL

FABRICS:

Flex Weave 1.9

Flex Durafiber



ELEVEN *11*

RUGBY



Scan to QR code or click the link to access our [Custom Uniform Builder](#) and explore all our available designs.



SCRUM

SHORT SLEEVE JERSEY

CORE | SELECT | **PRO**

MEN'S: E10SMSSJ

\$56

WOMEN'S: E10SWSSJ

DESCRIPTION

- Pro level compression fit jersey
- V-neck collar style
- Heavyweight spandex fabric for flexibility and durability
- Reinforced seams and collar
- Raglan sleeve for better fit

SIZING:

Men's: XS-5XL

Youth: YXS-YXL

Women's: XS-3XL

FABRICS:

Flex Durafiber





PACE SHORT SLEEVE JERSEY

CORE **SELECT** PRO

MEN'S: E10PMSSJ **\$53**

WOMEN'S: E10PWSSJ

DESCRIPTION

- Select level short sleeve v-neck jersey
- V-neck collar style
- Heavyweight Proknit 2.7 fabric for durability
- Reinforced seams and collar
- Raglan sleeve for better fit

SIZING:

Men's: XS-5XL
Youth: YXS-YXL
Women's: XS-3XL

FABRICS:

Proknit 2.7



PACE SHORT WITH ANTI-SLIP

CORE **SELECT** PRO

MEN'S: E10PMRS **\$46**

WOMEN'S: E10PWRS

DESCRIPTION

- Select level short
- Silicone anti-slip drawstring waistband
- Heavyweight twill body for strength
- Spandex crotch for added comfort
- Excellent range of motion
- Graduated inseams

SIZING:

Men's: XS-5XL
Youth: YXS-YXL
Women's: XS-3XL

FABRICS:

Proknit 2.7

ELEVEN **11**

VELOCITY & SIDELINE



Scan to QR code or click the link to access our [Custom Uniform Builder](#) and explore all our available designs.

VELOCITY

5 DAY PROGRAM

ESSENTIALS. FAST. ON TIME.



SHIPS 5 DAYS
FROM APPROVAL



BUILD
ONLINE



ADD YOUR TEAM
COLORS AND LOGOS

THE FABRICS



E-LITE

145 GSM / 100% Polyester



PINHOLE MESH

180 GSM / 100% Polyester



ULTRAFLEX

FRONT: 160 GSM / 15% Spandex

BACK: 160 GSM / 10% Spandex





VELOCITY

SHORT SLEEVE TEE



CORE SELECT PRO

MEN'S: E0VMSS **\$27**
WOMEN'S: E0VWSS

DESCRIPTION

- Set-in short sleeves
- Drop tail design
- Neck taping
- Self material collar

SIZING: Men's: S-5XL Women's: S-3XL Youth: XS-XL
FABRICS: E-lite



VELOCITY

LONG SLEEVE TEE



CORE SELECT PRO

MEN'S: E0VMLS **\$32**
WOMEN'S: E0VWLS

DESCRIPTION

- Set-in long sleeves
- Drop tail design
- Neck taping
- Self material collar

SIZING: Men's: S-5XL Women's: S-3XL Youth: XS-XL
FABRICS: E-lite



VELOCITY SLEEVELESS TEE



CORE SELECT PRO

MEN'S: E0VMNS

\$26

WOMEN'S: E0VWNS

DESCRIPTION

- Sleeveless
- Drop tail design
- Neck taping
- Self material collar

SIZING:

Men's: S-5XL
Women's: S-3X
Youth: XS-XL

FABRICS:

E-lite



VELOCITY SLEEVELESS RACERBACK TEE



CORE SELECT PRO

WOMEN'S: E0VWNSR

\$26

DESCRIPTION

- Racerback sleeveless design
- Drop tail design
- Neck taping
- Self material collar

SIZING:

Women's: S-3X
Youth: XS-XL

FABRICS:

E-lite



VELOCITY SHORTS WITH & WITHOUT POCKETS



CORE SELECT PRO

MEN'S NO POCKETS 7": E0VMSNP7

\$30

MEN'S WITH POCKETS 7": E0VMSWP7

\$36

WOMEN'S NO POCKETS 5": E0VWSNP5

\$30

WOMEN'S WITH POCKETS 5": E0VWSWP5

\$36

DESCRIPTION

- Lace drawcord
- Cover hemmed
- Men's and women's inseams 7"

SIZING:

Men's: S-4XL
Women's: S-3XL
Youth: XS-XL

FABRICS:

E-lite



VELOCITY

SLEEVELESS HOODED TEE



CORE SELECT PRO

MEN'S: E0VMNSH

\$34

WOMEN'S: E0VWNSR

DESCRIPTION

- Core level hooded t-shirt
- E-lite flat knit front and stretch mesh back fabric options

SIZING:

Men's: S-5XL
 Women's: S-3XL
 Youth: YXS-YXL

FABRICS:

E-lite



VELOCITY

SHORT SLEEVE HOODED TEE



CORE SELECT PRO

MEN'S: E0VMSSH

\$35

WOMEN'S: E0VWSSH

DESCRIPTION

- Core level hooded t-shirt
- E-lite flat knit front and stretch mesh back fabric options
- Set-in short sleeves

SIZING:

Men's: S-5XL
 Women's: S-3XL
 Youth: YXS-YXL

FABRICS:

E-lite



VELOCITY



LONG SLEEVE HOODED TEE

CORE SELECT PRO

MEN'S: E0VMLSH **\$40**

WOMEN'S: E0VWLSH

DESCRIPTION

- Core level hooded t-shirt
- E-lite flat knit front and stretch mesh back fabric options
- Set-in long sleeves

SIZING:

Men's: S-5XL
 Women's: S-3XL
 Youth: YXS-YXL

FABRICS:

E-lite



VICTORY

PULLOVER HOODIE

CORE **SELECT** PRO

MEN'S #: E11VMPH **\$76**

WOMEN'S #: E11VWPH

DESCRIPTION

- Heavyweight Flex Durafiber
- Adjustable drawstring neck (Adult sizes only)
- Large center pocket
- Self-material cuffs & waist

SIZING:

Men's: S-5XL
 Women's: XS-4XL
 Youth: YXS-YXL

FABRICS:

Flex Durafiber





TRIUMPH WARM UP JACKET

CORE **SELECT** PRO

MEN'S #: E11TMWUJ

\$80

WOMEN'S #: E11TWWUJ

DESCRIPTION

- Traditional full zip warm up jacket
- Zipper neck garage, side pockets & self-material cuffs
- Heavyweight fabric with outstanding durability and stretch.

SIZING:

Men's: S-5XL

Women's: XS-3XL

Youth: YXS-YXL

FABRICS:

Flex Durafiber



TRIUMPH WARM UP PANTS

CORE **SELECT** PRO

MEN'S #: E11TMWUP

\$66

WOMEN'S #: E11TWWUP

DESCRIPTION

- Traditional styled warm up pant with pockets
- Heavyweight Flex Durafiber fabric with outstanding durability and stretch

SIZING:

Men's: S-4XL

Women's: XS-3XL

Youth: YXS-YXL

FABRICS:

Flex Durafiber



SWEEP

WOVEN WARM UP JACKET

CORE **SELECT** PRO

MEN'S #: E11SMWUJ **\$90**

WOMEN'S #: E11SWWUJ

DESCRIPTION

- Traditional full zip warm up jacket
- Mesh liner for enhanced moisture management
- Zipper neck garage, side pockets & self-material cuffs
- Lightweight woven fabric with smooth finish
- Comfortable with full range of motion

SIZING:

Men's: XS-3XL

Women's: XS-2XL

FABRICS:

Flexweave 1.9

Feathermesh liner

SWEEP

WOVEN WARM UP PANT

CORE **SELECT** PRO

MEN'S #: E11SMWUP **\$76**

WOMEN'S #: E11SWWUP

DESCRIPTION

- Traditional style warm up pant with pockets
- Flexweave lightweight woven fabric with smooth finish and excellent drape

SIZING:

Men's: XS-4XL

Women's: XS-3XL

Youth: YXS-YXL

FABRICS:

Flexweave 1.9



CHALLENGER POLO SHIRT

CORE **SELECT** PRO

MEN'S #: E11CMP

\$57

WOMEN'S #: E11CWP

DESCRIPTION

- Traditional short or long sleeve 3-button polo
- 4-panel construction with overlock stitching
- Reinforced self-collar
- Modern lightweight fabric

SIZING:

Men's: S-5XL

Youth: YXS-YXL

Women's: XS-4XL

Girl's: GS-GL

FABRICS:

ComfortFlex



CHALLENGER LONG SLEEVE 1/4 ZIP

CORE **SELECT** PRO

MEN'S #: E11CMLSZ

\$61

WOMEN'S #: E11CWLSZ

DESCRIPTION

- Traditional long or short sleeve 1/4 zip pullover
- Self-material cuffs
- Raglan cut profile for enhanced comfort
- Modern lightweight fabric

SIZING:

Men's: S-5XL

Youth: YXS-YXL

Women's: XS-4XL

Girl's: GS-GL

FABRICS:

ComfortFlex



FLAIR TAPERED JACKET

CORE **SELECT** PRO

ITEM #: E11FWTJ

\$76

DESCRIPTION

- Sleek yoga inspired design
- Flattering tapered full zip design
- Flat lock stitching throughout
- Flex Durafiber fabric for comfort and style

SIZING:

Women's: XS-3XL
Girl's: G2XS-GXL

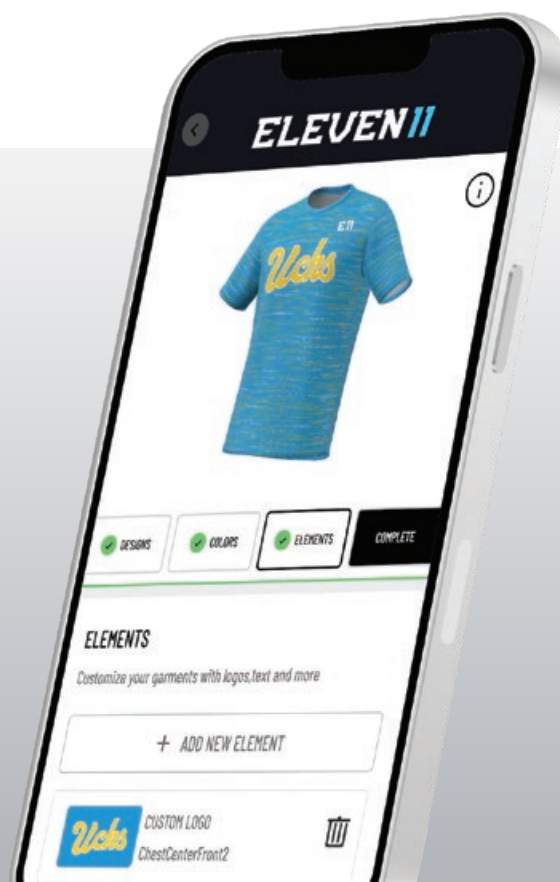
FABRICS:

Flex Durafiber

EXPLORE EVERY
DESIGN OPTION

**BUILD YOURS IN OUR
UNIFORM CREATOR**

eleven11teamsports.com



ELEVEN **11**

BAGS



Scan to QR code or click the link to access our [Custom Uniform Builder](#) and explore all our available designs.



CARGO DUFFLE BAG

CORE SELECT **PRO**

SMALL : E12CDBS	\$66
MEDIUM : E12CDBM	\$76
LARGE : E12CDBL	\$80
XLARGE : E12CDBXL	\$86

DESCRIPTION

- Made from military grade polyester
- #10 Zippers, metal buckles & rivets at key stress points
- Seatbelt grade webbing
- Interior fully lined
- Adjustable shoulder strap for comfort

SIZING:

Small: 17" x 10" x 10"
 Medium: 24" x 11" x 11"
 Large: 28" x 11" x 11"
 XLarge: 36" x 13" x 13"

FABRICS:

Armortek 1680 D



ALL BAGS ARE MADE WITH PREMIUM FABRIC & HARDWARE



1680 DENIER FABRIC



NO.10 ZIPPERS



RIVETED STRESS POINTS



5-TOOL BACKPACK

CORE | SELECT | **PRO**

ITEM #: E125TBP

\$112

DESCRIPTION

- Made from military grade polyester
- #10 Zippers, metal buckles & rivets at key stress points
- Seatbelt grade webbing
- Traditional style backpack carrier
- Compartments for balls, bats, water bottles, cleats, and helmet

SIZING:

18" x 13" x 9.5"

FABRICS:

Armortek 1680 D



ELEVEN **11**

APPENDIX

STANDARD FONTS

NF AGENCY

ABCDEFGHIJKLMNOPQRSTUVWXYZ
1234567890

NF CANARD

RBCDEFGHIJKLMNOPQRSTUVWXYZ
1234567890

NF BLUE JAY

ABCDEF GHIJKLMNOPQRSTUVWXYZ
1234567890

GAME TIME

ABCDEF GHIJKLMNOPQRSTUVWXYZ
1234567890

NF DISASTER

ABCDEF GHIJKLMNOPQRSTUVWXYZ
1234567890

NF GRIZZLE

ABCDEF GHIJKLMNOPQRSTUVWXYZ
1234567890

NF IMPACT

ABCDEF GHIJKLMNOPQRSTUVWXYZ
1234567890

NF SOX

ABCDEF GHIJKLMNOPQRSTUVWXYZ
1234567890

NF TROJANS

ABCDEF GHIJKLMNOPQRSTUVWXYZ
1234567890

NF TIFFANT

ABCDEF GHIJKLMNOPQRSTUVWXYZ
1234567890

NF ARMORHIDE

ABCDEFGHIJKLMNOPQRSTUVWXYZ
1234567890

NF BANFF SCRIPT

ABCDEFGHIJKL MNOPQRSTUVWXYZ
1234567890

EDGE

ABCDEFGHIJKLMNOPQRSTUVWXYZ
1234567890

NF CAPTAIN

ABCDEF GHIJKLMNOPQRSTUVWXYZ
1234567890

NF GLADES

ABCDEF GHIJKLMNOPQRSTUVWXYZ
1234567890

HLITE BLOCK

ABCDEF GHIJKLMNOPQRSTUVWXYZ
1234567890

NF MACHINE

ABCDEF GHIJKLMNOPQRSTUVWXYZ
1234567890

PRO BLOCK

ABCDEF GHIJKLMNOPQRSTUVWXYZ
1234567890

NF MOTOR

ABCDEF GHIJKLMNOPQRSTUVWXYZ
1234567890

NF JAGUAR

ABCDEF GHIJKLMNOPQRSTUVWXYZ
1234567890

To the left is a variety of fonts we offer which can be used for custom orders. For even more options, visit the builder and explore our extensive font collection to find the perfect match for your project.

ONE COLOR

NAME

10

TWO COLOR

NAME

10

THREE COLOR

NAME

10

STOCK COLORS

Below is a list of our 55 stock sublimation colors, each meticulously formulated to meet the highest industry standards. We utilize the finest tools and resources to ensure our colors remain vibrant and rich, providing unmatched quality. Additionally, we offer expert color matching services to meet your specific needs, ensuring perfect consistency for all your projects. Trust us to deliver the most vivid and accurate colors every time.



DISCLAIMER

When applying a gradient fade, it does not result in a simple two-color transition. An intermediary color will always appear where the two primary colors converge. This intermediate color may vary in the final print. Please note that using gradient fades excludes any possibility of warranties or returns related to the fade. The provided mock-up is for visual reference and is not to scale.

FABRIC INFORMATION

We take immense pride in meticulously selecting the finest fabrics available in the industry, ensuring that every product we create meets the highest standards of quality and durability. Our commitment to excellence drives us to continuously innovate and develop, pushing the boundaries of design and functionality to bring our customers products that not only meet their needs but exceed their expectations.

Our dedication to utilizing the best materials and adopting the latest technologies reflects our unwavering pursuit of perfection in every piece we craft.



E-DRY

130 GSM / 100% POLYESTER

A versatile, lightweight fabric offering exceptional air permeability without sacrificing moisture wicking capabilities.



E-LITE

145 GSM / 100% POLYESTER

Traditional lightweight interlock fabric with excellent drape, sheen and durability. A great all around fabric.



PINHOLE MESH

180 GSM / 100% POLYESTER

A medium weight knit fabric that features ultra fine pinhole mesh construction. Great all around fabric with excellent breathability and drape.



AIRMESH

190 GSM / 100% POLYESTER

A mediumweight durable and versatile fabric used extensively in hockey and lacrosse products. Micro cell construction give high loft, durability and breath-ability.



PROKNIT 2.7

270 GSM / 100% POLYESTER

Heavyweight interlock with outstanding durability, limited stretch and reinforcing fibers for use in rugby shirts and baseball pants.



FEATHER MESH

110 GSM / 100% POLYESTER

Our lightweight 2-way mesh fabric is a durable and breathable traditional mesh design used in strategic high ventilation areas.



PRIME FLEECE

250 GSM / 100% POLYESTER

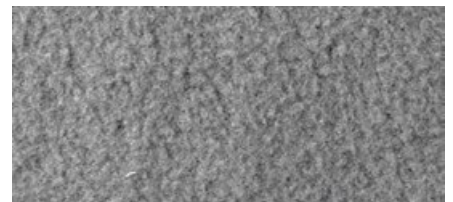
Heavyweight fleece with a traditional cotton look. Soft, warm and durable.



WIFFLE MESH

160 GSM / 100% POLYESTER

Lightweight high loft fabric with outstanding air transfer properties.



FLEECE LINER

190 GSM / 100% POLYESTER

Traditional lightweight interlock fabric with excellent drape, sheen and durability. A great all around fabric.



NANOMESH

200 GSM / 100% POLYESTER

Medium weight mock mesh fabric with excellent drape, sheen and breathability.



E-MESH

200 GSM / 100% POLYESTER

Traditional medium weight mesh fabric offering exceptional air permeability.



HEX 16.5

165 GSM / 100% POLYESTER

Modern lightweight fabric with outstanding drape, sheen and breathability. Subtle hex pattern in weave.



ULTRAFLEX

FRONT: 160 GSM / 15% SPANDEX
BACK: 160 GSM / 10% SPANDEX

Flat knit front with pin dot mesh back - abrasion resistant, high-stretch & breathable



AEROSPHERE

160 GSM / 100% POLYESTER

A medium weight knit mock mesh fabric. Great all around fabric with excellent breath-ability and drape.



DAZZLE

160 GSM / 100% POLYESTER

Heavyweight fabric with brilliant shine. Used primarily in basketball.



FLEX DURAFIBER

260 GSM / 10% SPANDEX

Heavyweight fabric with outstanding durability and stretch. Used primarily in football.



FLEX DRY

220 GSM / 12% SPANDEX

Mediumweight high spandex content with smooth finish and incredible stretch. Used in garments that desire high stretch



FLEX COMPRESSION 2.2

220 GSM / 14% SPANDEX

Mediumweight high spandex content with smooth finish and incredible stretch. Used for compression garments.



PROFLEX MESH

280 GSM / 8% SPANDEX

Heavyweight durable spandex with outstanding durability, stretch and breath-ability. Used primarily in football.



FLEX STRETCH

270 GSM / 14% SPANDEX

Heavyweight durable spandex with additional stretch. Used primarily in wrestling.



FLEX MESH 2.0

200 GSM / 8% SPANDEX

Medium weight fabric with pinhole mesh design for incredible stretch and breathability.



FLEX AEROFIBER

225 GSM / 8% SPANDEX

Medium weight durable spandex mesh with outstanding stretch & breath-ability. Used in wide variety of sports and apparel.



PROFLEX

320 GSM / 12% SPANDEX

Ultra-heavyweight fabric with outstanding durability and stretch. Used primarily in football.



FLEX SOFTSHELL

290 GSM / 6% SPANDEX

Heavyweight multi-layer bonded fabric with 4-way stretch, outstanding wind and water resistance.



FLEXWEAVE 1.4

140 GSM / 6% SPANDEX

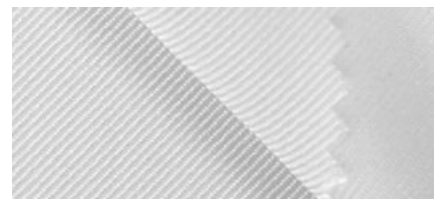
Lightweight 4-way stretch woven fabric with smooth finish and excellent drape. Woven fabrics offer outstanding durability and pick resistance.



FLEXWEAVE 1.9

190 GSM / 6% SPANDEX

Medium weight 4-way stretch woven fabric with smooth finish and excellent drape. Woven fabrics offer outstanding durability and pick resistance.



CALICO 2.2

220 GSM / 100% POLYESTER

Medium weight ultra strong, low stretch twill fabric. Features outstanding durability.



E11

Find us: www.eleven11teamsports.com
Contact us: info@eleven11teamsports.com